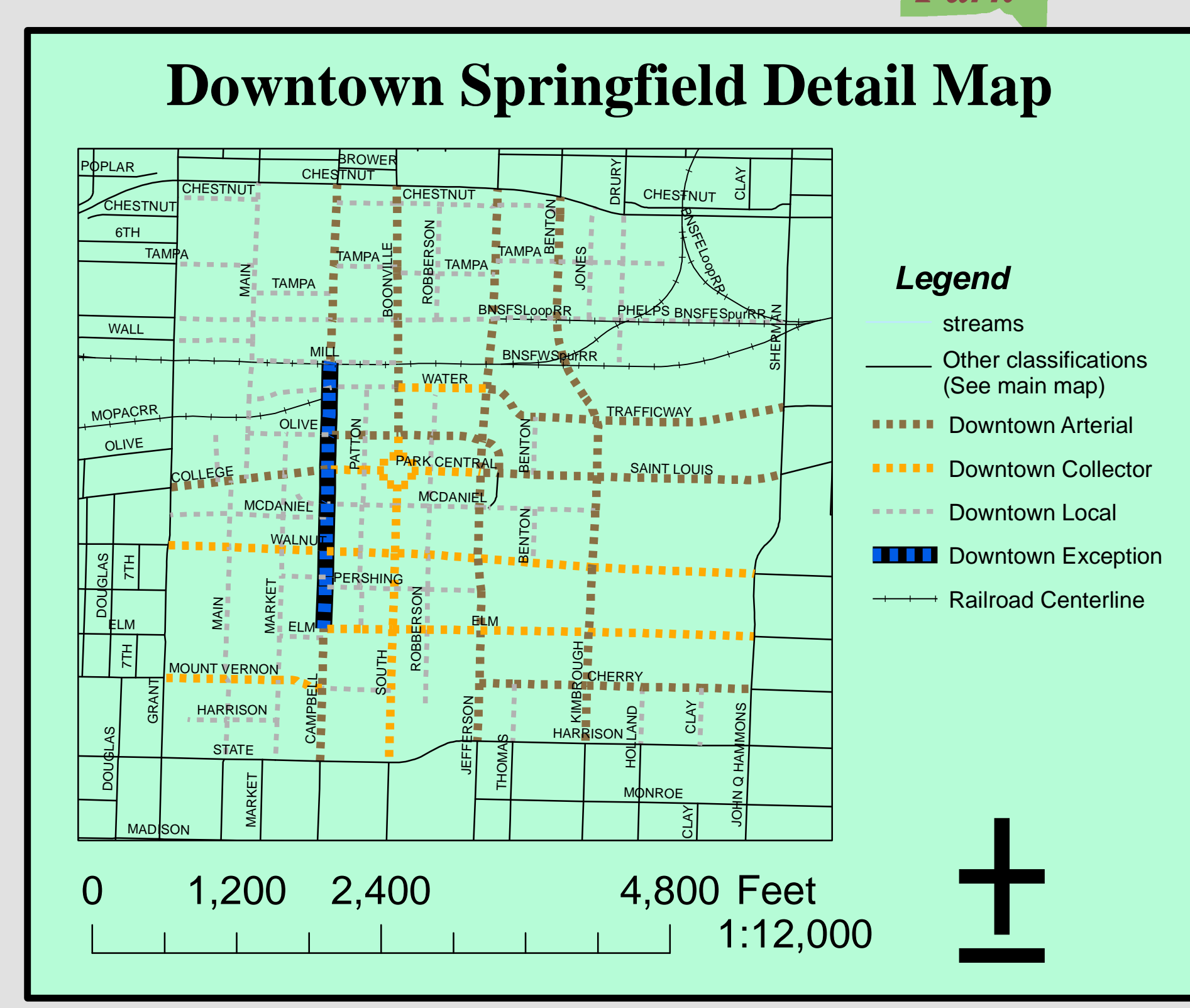
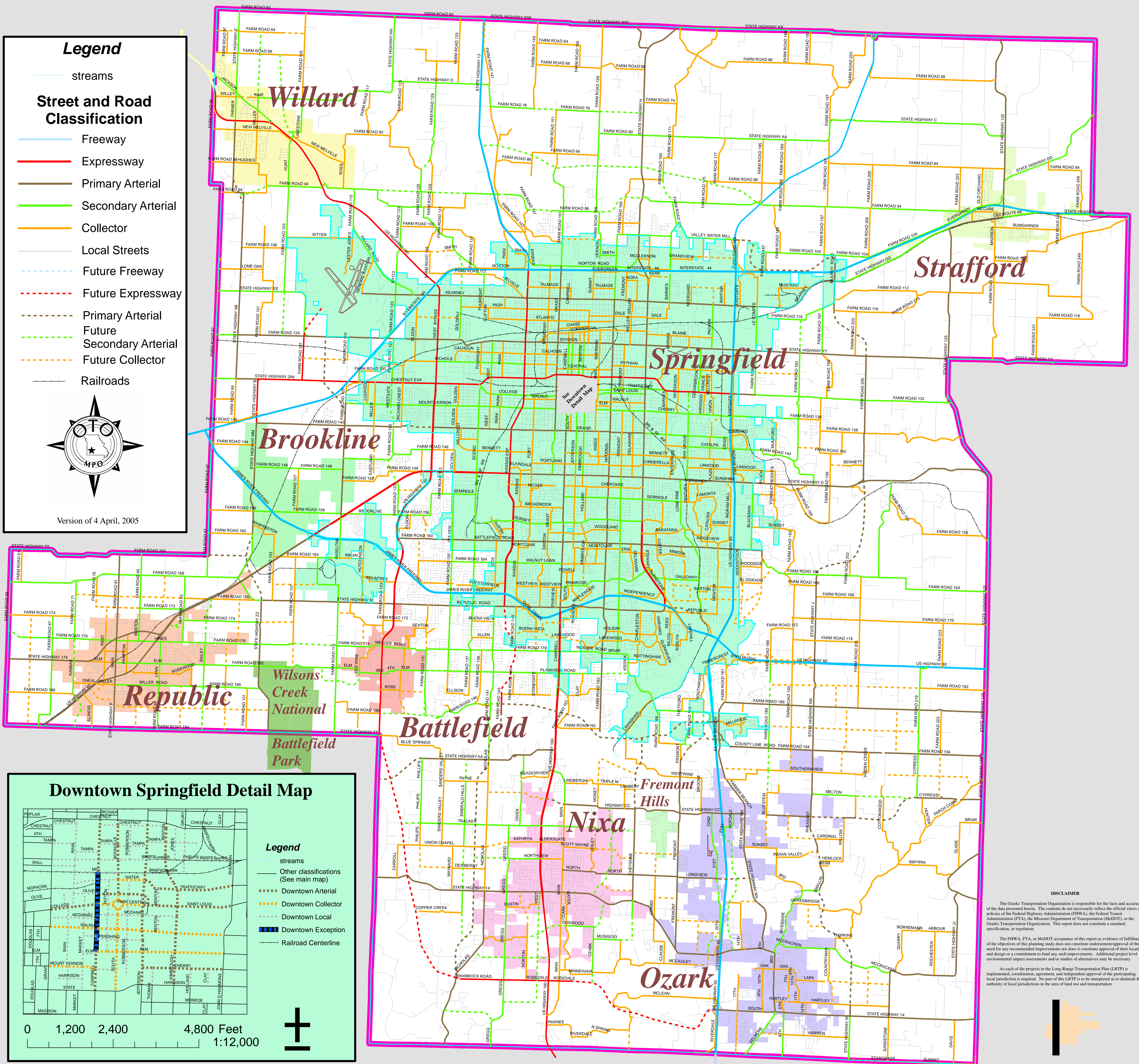


Major Thoroughfare Plan

Ozarks Transportation Organization

as approved by the O.T.O. Board of Directors on October 21, 2004



DISCLAIMER

The Ozarks Transportation Organization is responsible for the facts and accuracy of the data presented herein. The contents do not necessarily reflect the official views or policies of the Federal Highway Administration (FHWA), the Federal Transit Administration (FTA), the Missouri Department of Transportation (MoDOT), or the Ozarks Transportation Organization. This report does not constitute a standard, specification, or regulation.

The FHWA, FTA, or MoDOT acceptance of this report as evidence of fulfillment of the objectives of this planning study does not constitute endorsement, approval of the need for any recommended improvements nor does it constitute approval of their location and design or a commitment to fund any such improvements. Additional project level environmental impact assessments and/or studies of alternatives may be necessary.

As such of the projects in the Long-Range Transportation Plan (LRTP) is implemented, coordination, agreement, and independent approval of the participating local jurisdictions is required. No part of this LRTP is to be interpreted as to diminish the authority of local jurisdictions in the area of land use and transportation.

Typical Cross-Sections

