



OZARKS TRANSPORTATION ORGANIZATION
A METROPOLITAN PLANNING ORGANIZATION

205 PARK CENTRAL EAST, SUITE 205 SPRINGFIELD, MO 65806 417-865-3042 [p] 417-862-6013 [f]

18 July 2014

Ms. Eva Voss
Transportation Planning
Missouri Department of Transportation
P. O. Box 270
Jefferson City, Missouri 65102

Dear Ms. Voss:

I am writing to advise you that the Ozarks Transportation Organization approved Administrative Modification Number Four to the OTO FY 2014-2017 Transportation Improvement Program (TIP) on July 18, 2014. The adoption included demonstration of fiscal constraint as required by federal regulations. Please find enclosed the administrative modification, which includes the following:

Pavement Improvements on Various Routes (MO1404)

Route 65 Pavement Improvements at Sunshine (SP1501)

Revisions –

- **Moving a project's funds to another Fiscal Year provided they are not being moved into or out of the first four FY's of a TIP**
- **Adding a project to the TIP which is split from a "parent project" provided the cumulative, total amount of Federal funding in each funding category in the parent and split projects remains intact and the overall scope of work intended to be accomplished does not change**

This project was to move funding from Fiscal Year 2017 to Fiscal Year 2015 and to split the project from MO1404, of which the revised version is also included for reference.

Campbell and Plainview Phase 3 (SP1408)

Revision –

- **Changes in a project's programmed amount less than 15 percent (up to \$2,000,000)**

This project had funding added to Engineering for FY 2014.

Please let me know if you have any questions or need any other information.

Sincerely,

Natasha L. Longpine, AICP
Principal Planner





E) Roadways Section

TIP # MO1404 PAVEMENT IMPROVEMENTS ON VARIOUS MAJOR ROUTES

Route Various
From N/A
To N/A
Location/Agency Area Wide
Federal Agency FHWA
Responsible Agency MoDOT
Federal Funding Category NHPP(NHS)
MoDOT Funding Category Taking Care of the System
AC Year of Conv. FY 2015, FY 2016, FY 2017
STIP # 8P3035



Project Description

Pavement improvements on various major routes in the OTO area.

Fund Code	Source	Phase	FY2014	FY2015	FY2016	FY2017	Total
FHWA (NHS)	Federal	ENG	\$0	\$1,600	\$1,600	\$279,200	\$282,400
MoDOT	State	ENG	\$0	\$-1,600	\$-1,600	\$-279,200	\$-282,400
MoDOT	State	ENG	\$2,000	\$2,000	\$24,000	\$325,000	\$353,000
FHWA (NHS)	Federal	CON	\$0	\$0	\$0	\$5,349,600	\$5,349,600
MoDOT	State	CON	\$0	\$0	\$0	\$-5,349,600	\$-5,349,600
MoDOT	State	CON	\$0	\$0	\$0	\$6,687,000	\$6,687,000
Totals			\$2,000	\$2,000	\$24,000	\$7,012,000	\$7,040,000

Notes

Source of MoDOT Funds: State transportation revenues. Advance Construction with anticipated conversion in FY 2015, FY 2016, and FY 2017.

Prior Cost	\$0
Future Cost	\$0
Total Cost	\$7,040,000



E) Roadways Section

TIP # MO1404 PAVEMENT IMPROVEMENTS ON VARIOUS MAJOR ROUTES

Route Various
From N/A
To N/A
Location/Agency Area Wide
Federal Agency FHWA
Responsible Agency MoDOT
Federal Funding Category NHPP(NHS)
MoDOT Funding Category Taking Care of the System
AC Year of Conv. FY 2015, FY 2016, FY 2017
STIP # 8P3035



Project Description

Pavement improvements on various major routes in the OTO area.

Fund Code	Source	Phase	FY2014	FY2015	FY2016	FY2017	Total
FHWA (NHS)	Federal	ENG	\$0	\$20,000	\$1,600	\$260,800	\$282,400
MoDOT	State	ENG	\$0	\$-20,000	\$-1,600	\$-260,800	\$-282,400
MoDOT	State	ENG	\$2,000	\$25,000	\$24,000	\$302,000	\$353,000
FHWA (NHS)	Federal	CON	\$0	\$282,400	\$0	\$5,067,200	\$5,349,600
MoDOT	State	CON	\$0	\$-282,400	\$0	\$-5,067,200	\$-5,349,600
MoDOT	State	CON	\$0	\$353,000	\$0	\$6,334,000	\$6,687,000
Totals			\$2,000	\$378,000	\$24,000	\$6,636,000	\$7,040,000

Notes

Source of MoDOT Funds: State transportation revenues. Advance Construction with anticipated conversion in FY 2015, FY 2016, and FY 2017.

Prior Cost	\$0
Future Cost	\$0
Total Cost	\$7,040,000



E) Roadways Section

TIP # MO1404 PAVEMENT IMPROVEMENTS ON VARIOUS MAJOR ROUTES

Route Various

From N/A

To N/A

Location/Agency Area Wide

Federal Agency FHWA

Responsible Agency MoDOT

Federal Funding Category NHPP(NHS)

MoDOT Funding Category Taking Care of the System

AC Year of Conv. FY 2015, FY 2016, FY 2017

STIP # 8P3035



Project Description

Pavement improvements on various major routes in the OTO area.

Fund Code	Source	Phase	FY2014	FY2015	FY2016	FY2017	Total
FHWA (NHS)	Federal	ENG	\$0	\$1,600	\$1,600	\$260,800	\$264,000
MoDOT	State	ENG	\$0	\$-1,600	\$-1,600	\$-260,800	\$-264,000
MoDOT	State	ENG	\$2,000	\$2,000	\$24,000	\$302,000	\$330,000
FHWA (NHS)	Federal	CON	\$0	\$0	\$0	\$5,067,200	\$5,067,200
MoDOT	State	CON	\$0	\$0	\$0	\$-5,067,200	\$-5,067,200
MoDOT	State	CON	\$0	\$0	\$0	\$6,334,000	\$6,334,000
Totals			\$2,000	\$2,000	\$24,000	\$6,636,000	\$6,664,000

Notes

Source of MoDOT Funds: State transportation revenues. Advance Construction with anticipated conversion in FY 2015, FY 2016, and FY 2017. SP1501 split from parent project MO1404 as part of Administrative Modification 4 (7/18/2014).

Prior Cost	\$0
Future Cost	\$0
Total Cost	\$6,664,000



E) Roadways Section

TIP # SP1501 **ROUTE 65 PAVEMENT IMPROVEMENTS AT SUNSHINE**

Route US 65
From Sunshine Street
To Sunshine Street

Location/Agency City of Springfield
Federal Agency FHWA
Responsible Agency MoDOT
Federal Funding Category NHPP(NHS)
MoDOT Funding Category Taking Care of the System
AC Year of Conv. FY 2015
STIP # 8P3035B



Project Description

Pavement improvements on various sections at the Sunshine Street (Rte. D) interchange in Springfield.

Fund Code	Source	Phase	FY2014	FY2015	FY2016	FY2017	Total
FHWA (NHS)	Federal	ENG	\$0	\$18,400	\$0	\$0	\$18,400
MoDOT	State	ENG	\$0	\$-18,400	\$0	\$0	\$-18,400
MoDOT	State	ENG	\$0	\$23,000	\$0	\$0	\$23,000
FHWA (NHS)	Federal	CON	\$0	\$282,400	\$0	\$0	\$282,400
MoDOT	State	CON	\$0	\$-282,400	\$0	\$0	\$-282,400
MoDOT	State	CON	\$0	\$353,000	\$0	\$0	\$353,000
Totals			\$0	\$376,000	\$0	\$0	\$376,000

Notes

Source of State Funds: State transportation tax revenues. Advance Construction with anticipated conversion in FY 2015. Split from parent project MO1404 with Administrative Modification 4 (7/18/2014).

Prior Cost	\$0
Future Cost	\$0
Total Cost	\$376,000

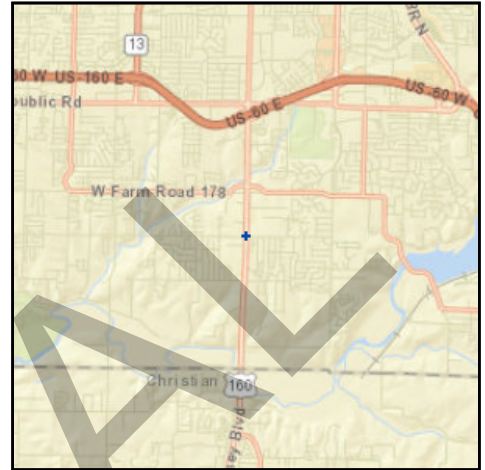


Transportation Improvement Program - FY 2014-2017

Project Detail by Section and Project Number with Map

E) Roadways Section

TIP # SP1408 **CAMPBELL AND PLAINVIEW PHASE 3**
Route Rte. 160
From Campbell Avenue
To Plainview Road
Location/Agency City of Springfield
Federal Agency FHWA
Responsible Agency MoDOT
Federal Funding Category NHPP(NHS), STP
MoDOT Funding Category Major Projects and Emerging Needs
AC Year of Conv.
STIP # 8S0690B



Project Description

Intersection improvements at Rte. 160 (Campbell Ave.) and Plainview Road, Phase 3

Fund Code	Source	Phase	FY2014	FY2015	FY2016	FY2017	Total
MoDOT	State	ENG	\$180,000	\$129,000	\$0	\$0	\$309,000
FHWA (STP-U)	Federal	ROW	\$595,000	\$0	\$0	\$0	\$595,000
LOCAL	Local	ROW	\$282,000	\$0	\$0	\$0	\$282,000
MoDOT	State	ROW	\$90,000	\$0	\$0	\$0	\$90,000
MoDOT	State	CON	\$0	\$1,148,000	\$0	\$0	\$1,148,000
Totals			\$1,147,000	\$1,277,000	\$0	\$0	\$2,424,000

Notes

Source of state funds: State of Missouri transportation tax revenues in statewide cost share program. Source of Local funds: City of Springfield 1/8 Cent Transportation Sales Tax revenues and Greene County Road and Bridge Tax revenues. \$132,944 of local funds from Greene County.

Prior Cost	\$0
Future Cost	\$0
Total Cost	\$2,424,000



Transportation Improvement Program - FY 2014-2017

Project Detail by Section and Project Number with Map

E) Roadways Section

TIP # SP1408 CAMPBELL AND PLAINVIEW PHASE 3
Route Rte. 160
From Campbell Avenue
To Plainview Road
Location/Agency City of Springfield
Federal Agency FHWA
Responsible Agency MoDOT
Federal Funding Category NHPP(NHS), STP
MoDOT Funding Category Major Projects and Emerging Needs
AC Year of Conv.
STIP # 8S0690B



Project Description

Intersection improvements at Rte. 160 (Campbell Ave.) and Plainview Road, Phase 3

Fund Code	Source	Phase	FY2014	FY2015	FY2016	FY2017	Total
MoDOT	State	ENG	\$225,000	\$129,000	\$0	\$0	\$354,000
FHWA (STP-U)	Federal	ROW	\$595,000	\$0	\$0	\$0	\$595,000
LOCAL	Local	ROW	\$282,000	\$0	\$0	\$0	\$282,000
MoDOT	State	ROW	\$90,000	\$0	\$0	\$0	\$90,000
MoDOT	State	CON	\$0	\$1,148,000	\$0	\$0	\$1,148,000
Totals			\$1,192,000	\$1,277,000	\$0	\$0	\$2,469,000

Notes

Source of state funds: State of Missouri transportation tax revenues in statewide cost share program. Source of Local funds: City of Springfield 1/8 Cent Transportation Sales Tax revenues and Greene County Road and Bridge Tax revenues. \$132,944 of local funds from Greene County.

Prior Cost	\$0
Future Cost	\$0
Total Cost	\$2,469,000

FINANCIAL SUMMARY

Roadways

YEARLY SUMMARY

PROJECT	Federal									Local	State			TOTAL	
	FHWA (STP-U)	FHWA (SAFETY)	FHWA (BRIDGE)	FHWA (STP)	FHWA (I/M)	FHWA (130)	FHWA (NHS)	FHWA (BRM)	FHWA (BRO)	LOCAL	MoDOT	MoDOT-AC	MoDOT-GCSA		
FY 2014															
BA1401	\$264,699	\$0	\$0	\$0	\$0	\$0	\$0	\$0	\$0	\$0	\$66,175	\$0	\$0	\$0	\$330,874
CC0901	\$0	\$0	\$0	\$0	\$0	\$0	\$0	\$0	\$0	\$0	\$0	\$2,000	\$0	\$0	\$2,000
CC1102	\$0	\$0	\$0	\$0	\$0	\$0	\$0	\$0	\$0	\$0	\$0	\$2,000	\$0	\$0	\$2,000
CC1110	\$228,000	\$0	\$0	\$0	\$0	\$0	\$0	\$0	\$0	\$0	\$100,000	\$386,000	\$0	\$0	\$714,000
CC1201	\$0	\$1,759,500	\$0	\$0	\$0	\$0	\$0	\$0	\$0	\$0	\$0	\$195,500	\$0	\$0	\$1,955,000
CC1202	\$0	\$200,400	\$0	\$0	\$0	\$0	\$0	\$0	\$0	\$0	\$0	\$22,600	\$0	\$0	\$223,000
CC1203	\$0	\$0	\$0	\$0	\$0	\$0	\$320,000	\$0	\$0	\$0	\$0	\$33,000	\$0	\$0	\$353,000
CC1301	\$0	\$50,000	\$0	\$0	\$0	\$0	\$0	\$0	\$0	\$0	\$0	\$189,000	\$0	\$0	\$239,000
CC1302	\$0	\$891,000	\$0	\$0	\$0	\$0	\$0	\$0	\$0	\$0	\$0	\$99,000	\$0	\$0	\$990,000
CC1303	\$0	\$184,000	\$0	\$0	\$0	\$0	\$0	\$0	\$0	\$0	\$0	\$1,686,000	\$0	\$0	\$1,870,000
CC1304	\$0	\$101,700	\$0	\$0	\$0	\$0	\$0	\$0	\$0	\$0	\$0	\$11,300	\$0	\$0	\$113,000
CC1305	\$0	\$143,100	\$0	\$0	\$0	\$0	\$0	\$0	\$0	\$0	\$0	\$15,900	\$0	\$0	\$159,000
CC1306	\$0	\$0	\$0	\$2,387,200	\$0	\$0	\$0	\$0	\$0	\$0	\$0	(\$2,387,200)	\$0	\$0	\$0
CC1401	\$0	\$270,900	\$0	\$0	\$0	\$0	\$0	\$0	\$0	\$0	\$0	\$30,100	\$0	\$0	\$301,000
GR1010	\$0	\$0	\$0	\$0	\$0	\$0	\$0	\$0	\$0	\$0	\$0	\$1,160,000	\$0	\$0	\$1,160,000
GR1104	\$0	\$0	\$0	\$0	\$0	\$80,000	\$0	\$0	\$0	\$0	\$0	\$0	\$0	\$0	\$100,000
GR1206	\$0	\$0	\$2,008,000	\$0	\$0	\$0	\$0	\$0	\$0	\$0	\$0	\$502,000	\$0	\$20,000	\$2,510,000
GR1213	\$0	\$0	\$0	\$0	\$0	\$0	\$0	\$0	\$1,133,600	\$283,400	\$0	\$0	\$0	\$0	\$1,417,000
GR1303	\$0	\$0	\$0	\$3,588,800	\$0	\$0	\$0	\$0	\$0	\$0	\$0	(\$3,588,800)	\$0	\$0	\$0
GR1304	\$0	\$0	\$0	\$0	\$0	\$0	\$0	\$0	\$0	\$0	\$0	\$387,400	\$1,549,600	\$0	\$1,937,000
GR1305	\$0	\$0	\$0	\$0	\$0	\$0	\$0	\$0	\$0	\$0	\$0	\$2,785,000	\$0	\$0	\$2,785,000
GR1306	\$0	\$0	\$0	\$0	\$0	\$0	\$0	\$0	\$0	\$0	\$0	\$1,839,000	\$0	\$0	\$1,839,000
GR1308	\$0	\$0	\$0	\$0	\$0	\$0	\$0	\$0	\$0	\$0	\$0	\$0	\$0	\$0	\$0
GR1309	\$0	\$0	\$0	\$0	\$0	\$0	\$0	\$52,852	\$0	\$0	\$0	(\$52,852)	\$0	\$0	\$0
GR1311	\$0	\$0	\$0	\$0	\$0	\$0	\$0	\$0	\$0	\$168,000	\$42,000	\$0	\$0	\$0	\$210,000
GR1312	\$0	\$0	\$0	\$0	\$0	\$0	\$0	\$0	\$0	\$371,200	\$92,800	\$0	\$0	\$0	\$464,000
GR1401	\$0	\$0	\$0	\$0	\$0	\$0	\$0	\$0	\$0	\$0	\$0	\$314,000	\$0	\$0	\$314,000
GR1402	\$0	\$0	\$0	\$0	\$0	\$247,500	\$0	\$0	\$0	\$0	\$0	\$169,000	\$0	\$27,500	\$444,000
GR1403	\$0	\$0	\$0	\$0	\$0	\$0	\$0	\$0	\$0	\$0	\$0	\$2,000	\$0	\$0	\$2,000
GR1404	\$0	\$0	\$0	\$0	\$216,000	\$0	\$0	\$0	\$0	\$0	\$0	\$0	\$0	\$0	\$216,000
GR1405	\$0	\$56,000	\$0	\$0	\$0	\$0	\$0	\$0	\$0	\$0	\$0	\$309,000	\$0	\$0	\$365,000
GR1406	\$0	\$28,000	\$0	\$0	\$0	\$0	\$0	\$0	\$0	\$0	\$0	\$689,000	\$0	\$0	\$717,000
GR1407	\$0	\$0	\$0	\$0	\$0	\$0	\$0	\$0	\$0	\$0	\$150,000	\$18,000	\$0	\$0	\$168,000
GR1408	\$0	\$0	\$0	\$0	\$0	\$0	\$0	\$0	\$0	\$0	\$0	\$400	\$1,600	\$0	\$2,000
MO1105	\$0	\$0	\$0	\$0	\$0	\$0	\$0	\$0	\$0	\$0	\$0	\$284,000	\$0	\$0	\$284,000
MO1150	\$0	\$0	\$0	\$0	\$0	\$0	\$0	\$0	\$0	\$0	\$0	\$193,000	\$0	\$0	\$193,000
MO1201	\$0	\$900	\$0	\$0	\$0	\$0	\$0	\$0	\$0	\$0	\$0	\$100	\$0	\$0	\$1,000
MO1401	\$0	\$0	\$0	\$0	\$0	\$0	\$0	\$0	\$0	\$0	\$0	\$52,000	\$0	\$0	\$52,000
MO1403	\$268,000	\$0	\$0	\$0	\$0	\$0	\$0	\$0	\$0	\$0	\$67,000	\$673,000	\$0	\$0	\$1,008,000
MO1404	\$0	\$0	\$0	\$0	\$0	\$0	\$0	\$0	\$0	\$0	\$0	\$2,000	\$0	\$0	\$2,000
MO1405	\$0	\$0	\$0	\$0	\$0	\$0	\$0	\$0	\$0	\$0	\$0	\$25,000	\$0	\$0	\$25,000
MO1406	\$0	\$0	\$0	\$0	\$0	\$0	\$0	\$0	\$0	\$0	\$0	\$807,000	\$0	\$0	\$807,000
MO1407	\$0	\$0	\$0	\$0	\$0	\$0	\$0	\$0	\$0	\$0	\$0	\$660,000	\$0	\$0	\$660,000
MO1408	\$0	\$0	\$0	\$0	\$0	\$0	\$0	\$0	\$0	\$0	\$0	\$3,000	\$0	\$0	\$3,000
MO1409	\$0	\$0	\$0	\$0	\$0	\$0	\$0	\$0	\$0	\$0	\$0	\$2,000	\$0	\$0	\$2,000
MO1410	\$0	\$0	\$0	\$12,000	\$0	\$0	\$0	\$0	\$0	\$0	\$0	\$3,000	\$0	\$0	\$15,000
MO1411	\$0	\$0	\$0	\$16,000	\$0	\$0	\$0	\$0	\$0	\$0	\$0	\$4,000	\$0	\$0	\$20,000
MO1501	\$0	\$0	\$0	\$0	\$0	\$0	\$0	\$0	\$0	\$0	\$0	\$2,000	\$0	\$0	\$2,000
MO1505	\$0	\$0	\$0	\$0	\$0	\$0	\$0	\$0	\$0	\$0	\$0	\$2,000	\$0	\$0	\$2,000
MO1605	\$0	\$0	\$0	\$0	\$0	\$0	\$0	\$0	\$0	\$0	\$0	\$2,000	\$0	\$0	\$2,000
MO1705	\$0	\$0	\$0	\$0	\$0	\$0	\$0	\$0	\$0	\$0	\$0	\$2,000	\$0	\$0	\$2,000
NX0701	\$301,920	\$0	\$0	\$0	\$0	\$0	\$0	\$0	\$0	\$0	\$75,480	\$0	\$0	\$0	\$377,400
NX0703	\$76,000	\$0	\$0	\$0	\$0	\$0	\$0	\$0	\$0	\$0	\$19,000	\$0	\$0	\$0	\$95,000
NX0801	\$0	\$0	\$0	\$0	\$0	\$0	\$0	\$0	\$0	\$0	\$175,000	\$0	\$0	\$0	\$175,000
NX0803	\$0	\$0	\$0	\$0	\$0	\$0	\$0	\$0	\$0	\$0	\$1,313,314	\$0	\$0	\$0	\$1,313,314
NX0906	\$0	\$0	\$0	\$0	\$0	\$0	\$0	\$0	\$0	\$0	\$0	\$2,000	\$0	\$0	\$2,000
NX1401	\$0	\$0	\$0	\$0	\$0	\$0	\$0	\$0	\$0	\$0	\$188,700	\$0	\$0	\$0	\$188,700
OK1006	\$0	\$0	\$0	\$535,200	\$0	\$0	\$0	\$0	\$0	\$0	\$0	(\$535,200)	\$0	\$0	\$0
OK1401	\$0	\$0	\$0	\$0	\$0	\$0	\$0	\$0	\$0	\$0	\$0	\$2,000	\$0	\$0	\$2,000
RG0901	\$0	\$0	\$0	\$0	\$0	\$0	\$0	\$0	\$0	\$0	\$0	\$2,000	\$0	\$0	\$2,000
RG1201	\$0	\$0	\$0	\$0	\$0	\$0	\$0	\$0	\$0	\$0	\$0	\$1,000	\$0	\$0	\$1,000
RP1201	\$0	\$0	\$0	\$0	\$0	\$0	\$217,600	\$0	\$0	\$0	\$0	(\$217,600)	\$0	\$0	\$0
RP1301	\$0	\$0	\$0	\$0	\$0	\$0	\$0	\$0	\$0	\$0	\$0	\$1,683,000	\$0	\$0	\$1,683,000
RP1302	\$0	\$0	\$0	\$0	\$0	\$0	\$0	\$949,600	\$0	\$0	\$0	(\$949,600)	\$0	\$0	\$0
RP1303	\$64,000	\$0	\$0	\$0	\$0	\$0	\$0	\$0	\$0	\$0	\$16,000	\$0	\$0	\$0	\$80,000

FINANCIAL SUMMARY

Roadways

YEARLY SUMMARY														
PROJECT	Federal									Local	State			TOTAL
	FHWA (STP-U)	FHWA (SAFETY)	FHWA (BRIDGE)	FHWA (STP)	FHWA (I/M)	FHWA (130)	FHWA (NHS)	FHWA (BRM)	FHWA (BRO)	LOCAL	MoDOT	MoDOT-AC	MoDOT-GCSA	
FY 2014 continued														
RP1305	\$0	\$0	\$0	\$0	\$0	\$0	\$182,400	\$0	\$0	\$0	\$0	(\$182,400)	\$0	\$0
RP1401	\$0	\$0	\$0	\$0	\$0	\$0	\$0	\$0	\$0	\$0	\$0	\$2,000	\$0	\$0
SP1018	\$0	\$0	\$80,000	\$0	\$0	\$0	\$0	\$0	\$0	\$0	\$0	\$20,000	\$0	\$0
SP1021	\$0	\$0	\$0	\$660,000	\$0	\$0	\$0	\$0	\$0	\$0	\$0	(\$660,000)	\$0	\$0
SP1106	\$0	\$0	\$0	\$0	\$0	\$0	\$0	\$0	\$0	\$0	\$0	\$5,000	\$0	\$0
SP1108	\$2,791,367	\$0	\$0	\$0	\$0	\$0	\$512,000	\$1,189,657	\$0	\$4,153,300	\$3,961,475	\$0	\$0	\$12,607,799
SP1109	\$0	\$0	\$0	\$2,067,400	\$0	\$0	\$24,000	\$0	\$0	\$2,000,000	\$56,000	\$0	\$0	\$4,147,400
SP1110	\$0	\$0	\$0	\$0	\$0	\$0	\$1,256,800	\$0	\$0	\$0	(\$1,256,800)	\$0	\$0	\$0
SP1112	\$0	\$0	\$0	\$0	\$0	\$0	\$0	\$0	\$0	\$0	\$5,000	\$0	\$0	\$5,000
SP1122	\$0	\$0	\$0	\$268,048	\$0	\$0	\$0	\$0	\$0	\$0	\$0	\$0	\$0	\$268,048
SP1202	\$0	\$0	\$0	\$0	\$0	\$0	\$1,175,200	\$0	\$0	\$0	(\$1,175,200)	\$0	\$0	\$0
SP1203	\$0	\$0	\$0	\$819,200	\$0	\$0	\$0	\$0	\$0	\$0	(\$819,200)	\$0	\$0	\$0
SP1204	\$0	\$0	\$0	\$0	\$0	\$0	\$0	\$0	\$0	\$0	\$2,000	\$0	\$0	\$2,000
SP1206	\$0	\$129,000	\$0	\$0	\$0	\$0	\$55,200	\$0	\$0	\$0	\$542,800	\$0	\$0	\$727,000
SP1209	\$0	\$0	\$0	\$499,915	\$0	\$0	\$0	\$0	\$0	\$124,979	\$0	\$0	\$0	\$624,894
SP1213	\$2,584,800	\$0	\$0	\$0	\$0	\$0	\$0	\$0	\$0	\$1,083,700	\$230,000	\$0	\$0	\$3,898,500
SP1302	\$0	\$0	\$0	\$0	\$0	\$80,000	\$0	\$0	\$0	\$0	\$0	\$0	\$20,000	\$100,000
SP1306	\$0	\$0	\$0	\$0	\$0	\$160,000	\$0	\$0	\$0	\$0	\$40,000	\$0	\$0	\$200,000
SP1312	\$0	\$0	\$0	\$0	\$0	\$0	\$0	\$0	\$0	\$0	\$2,312,000	\$0	\$0	\$2,312,000
SP1313	\$3,105,258	\$0	\$0	\$0	\$0	\$0	\$0	\$0	\$0	\$776,269	\$4,532,473	\$0	\$0	\$8,414,000
SP1314	\$0	\$0	\$0	\$0	\$0	\$0	\$0	\$0	\$0	\$0	\$1,266,000	\$0	\$0	\$1,266,000
SP1315	\$0	\$0	\$0	\$0	\$0	\$0	\$0	\$0	\$0	\$0	\$4,000	\$0	\$0	\$4,000
SP1316	\$0	\$0	\$0	\$0	\$0	\$0	\$0	\$0	\$0	\$0	\$17,000	\$0	\$0	\$17,000
SP1317	\$0	\$0	\$0	\$0	\$0	\$0	\$0	\$0	\$0	\$0	\$860,000	\$0	\$0	\$860,000
SP1318	\$0	\$0	\$0	\$0	\$0	\$0	\$0	\$0	\$0	\$0	\$10,000	\$0	\$0	\$10,000
SP1319	\$0	\$0	\$0	\$0	\$0	\$0	\$0	\$0	\$0	\$0	\$999,000	\$0	\$0	\$999,000
SP1321	\$10,000	\$0	\$0	\$0	\$0	\$0	\$0	\$0	\$0	\$3,984	\$0	\$0	\$0	\$13,984
SP1322	\$0	\$0	\$0	\$0	\$0	\$0	\$0	\$0	\$0	\$1,151,244	\$362,610	\$0	\$0	\$1,513,854
SP1323	\$0	\$0	\$0	\$0	\$0	\$0	\$0	\$0	\$0	\$0	\$5,000	\$0	\$0	\$5,000
SP1324	\$0	\$0	\$0	\$0	\$0	\$0	\$0	\$0	\$0	\$0	\$469,000	\$0	\$0	\$469,000
SP1401	\$0	\$0	\$0	\$0	\$0	\$0	\$0	\$0	\$0	\$0	\$3,000	\$0	\$0	\$3,000
SP1403	\$0	\$0	\$0	\$0	\$0	\$0	\$0	\$0	\$0	\$0	\$602,000	\$0	\$0	\$602,000
SP1404	\$0	\$0	\$0	\$0	\$0	\$0	\$0	\$0	\$0	\$0	\$390,000	\$0	\$0	\$390,000
SP1405	\$0	\$0	\$0	\$0	\$0	\$0	\$0	\$0	\$0	\$0	\$2,000	\$0	\$0	\$2,000
SP1407	\$300,000	\$0	\$0	\$0	\$0	\$0	\$0	\$0	\$0	\$142,000	\$780,000	\$0	\$0	\$1,222,000
SP1408	\$595,000	\$0	\$0	\$0	\$0	\$0	\$0	\$0	\$0	\$282,000	\$315,000	\$0	\$0	\$1,192,000
SP1409	\$0	\$0	\$0	\$0	\$0	\$0	\$0	\$0	\$0	\$0	\$2,000	\$0	\$0	\$2,000
SP1410	\$0	\$0	\$0	\$0	\$0	\$0	\$0	\$0	\$0	\$0	\$2,000	\$0	\$0	\$2,000
SP1411	\$0	\$0	\$0	\$0	\$0	\$0	\$0	\$0	\$0	\$0	\$6,000	\$0	\$0	\$6,000
SP1415	\$0	\$0	\$0	\$0	\$0	\$0	\$0	\$0	\$0	\$0	\$10,000	\$0	\$0	\$10,000
SP1416	\$0	\$0	\$0	\$0	\$0	\$0	\$0	\$0	\$0	\$0	\$8,000	\$0	\$0	\$8,000
SP1417	\$799,517	\$0	\$0	\$0	\$0	\$0	\$0	\$0	\$0	\$199,879	\$999,684	\$0	\$0	\$1,999,080
ST1101	\$0	\$222,000	\$0	\$0	\$0	\$0	\$0	\$0	\$0	\$0	\$544,000	\$0	\$0	\$766,000
ST1201	\$0	\$0	\$0	\$0	\$0	\$0	\$0	\$0	\$0	\$0	\$584,000	\$0	\$0	\$584,000
ST1401	\$0	\$126,000	\$0	\$0	\$0	\$0	\$0	\$0	\$0	\$0	\$234,000	\$0	\$0	\$360,000
WI1201	\$0	\$0	\$0	\$470,200	\$0	\$0	\$0	\$0	\$0	\$0	(\$470,200)	\$0	\$0	\$0
WI1301	\$0	\$0	\$0	\$0	\$0	\$0	\$0	\$0	\$0	\$0	\$3,000	\$0	\$0	\$3,000
SUBTOTAL	\$11,388,561	\$4,162,500	\$2,088,000	\$11,323,963	\$216,000	\$567,500	\$4,745,652	\$1,189,657	\$1,672,800	\$12,506,224	\$23,144,290	\$1,551,200	\$67,500	\$74,623,847

FINANCIAL SUMMARY

Roadways

YEARLY SUMMARY															
PROJECT	Federal									Local	State			TOTAL	
	FHWA (STP-U)	FHWA (SAFETY)	FHWA (BRIDGE)	FHWA (STP)	FHWA (I/M)	FHWA (130)	FHWA (NHS)	FHWA (BRM)	FHWA (BRO)	LOCAL	MoDOT	MoDOT-AC	MoDOT-GCSA		
FY 2015															
BA1101	\$8,000	\$0	\$0	\$0	\$0	\$0	\$0	\$0	\$0	\$0	\$2,000	\$0	\$0	\$0	\$10,000
CC0901	\$0	\$0	\$0	\$1,600	\$0	\$0	\$0	\$0	\$0	\$0	\$0	\$400	\$0	\$0	\$2,000
CC1102	\$0	\$0	\$0	\$0	\$0	\$0	\$1,600	\$0	\$0	\$0	\$0	\$400	\$0	\$0	\$2,000
CC1110	\$2,072,000	\$0	\$0	\$0	\$0	\$0	\$308,800	\$0	\$0	\$0	\$1,557,044	\$3,896,200	\$0	\$0	\$7,834,044
CC1203	\$0	\$0	\$0	\$0	\$0	\$0	\$282,400	\$0	\$0	\$0	\$0	(\$282,400)	\$0	\$0	\$0
CC1301	\$0	\$0	\$0	\$146,700	\$0	\$0	\$0	\$0	\$0	\$0	\$0	(\$146,700)	\$0	\$0	\$0
CC1303	\$0	\$0	\$0	\$1,185,600	\$0	\$0	\$0	\$0	\$0	\$0	\$0	(\$1,185,600)	\$0	\$0	\$0
GR1010	\$400,000	\$911,000	\$0	\$0	\$0	\$0	\$928,000	\$0	\$0	\$0	\$0	\$9,692,000	\$0	\$0	\$11,931,000
GR1104	\$0	\$0	\$0	\$0	\$0	\$40,000	\$0	\$0	\$0	\$0	\$0	\$0	\$0	\$10,000	\$50,000
GR1304	\$0	\$0	\$0	\$0	\$0	\$0	\$0	\$0	\$0	\$0	\$0	\$0	\$0	\$0	\$0
GR1305	\$0	\$0	\$0	\$0	\$0	\$0	\$2,228,000	\$0	\$0	\$0	\$0	(\$2,228,000)	\$0	\$0	\$0
GR1306	\$0	\$0	\$0	\$1,470,400	\$0	\$0	\$0	\$0	\$0	\$0	\$0	(\$1,470,400)	\$0	\$0	\$0
GR1308	\$0	\$0	\$0	\$0	\$0	\$0	\$0	\$0	\$0	\$0	\$0	\$0	\$0	\$0	\$0
GR1401	\$0	\$0	\$0	\$251,200	\$0	\$0	\$0	\$0	\$0	\$0	\$0	(\$251,200)	\$0	\$0	\$0
GR1402	\$0	\$0	\$0	\$0	\$0	\$2,002,500	\$0	\$0	\$0	\$0	\$0	\$133,000	\$0	\$222,500	\$2,358,000
GR1403	\$0	\$0	\$0	\$0	\$0	\$0	\$0	\$0	\$0	\$0	\$0	\$2,000	\$0	\$0	\$2,000
GR1404	\$0	\$0	\$0	\$0	\$180,000	\$0	\$0	\$0	\$0	\$0	\$0	(\$180,000)	\$0	\$0	\$0
GR1405	\$0	\$0	\$0	\$242,200	\$0	\$0	\$0	\$0	\$0	\$0	\$0	(\$242,200)	\$0	\$0	\$0
GR1406	\$0	\$0	\$0	\$548,800	\$0	\$0	\$0	\$0	\$0	\$0	\$0	(\$548,800)	\$0	\$0	\$0
GR1408	\$0	\$0	\$0	\$0	\$0	\$0	\$0	\$0	\$0	\$0	\$0	\$400	\$1,600	\$0	\$2,000
MO1105	\$0	\$0	\$0	\$0	\$0	\$0	\$0	\$0	\$0	\$0	\$0	\$284,000	\$0	\$0	\$284,000
MO1150	\$0	\$0	\$0	\$155,000	\$0	\$0	\$0	\$0	\$0	\$0	\$0	(\$155,000)	\$0	\$0	\$0
MO1201	\$0	\$900	\$0	\$0	\$0	\$0	\$0	\$0	\$0	\$0	\$0	\$100	\$0	\$0	\$1,000
MO1403	\$0	\$0	\$0	\$538,400	\$0	\$0	\$0	\$0	\$0	\$0	\$0	(\$538,400)	\$0	\$0	\$0
MO1404	\$0	\$0	\$0	\$0	\$0	\$0	\$1,600	\$0	\$0	\$0	\$0	\$400	\$0	\$0	\$2,000
MO1406	\$0	\$0	\$0	\$8,000	\$0	\$0	\$0	\$0	\$0	\$0	\$0	(\$8,000)	\$0	\$0	\$0
MO1407	\$0	\$0	\$0	\$528,000	\$0	\$0	\$0	\$0	\$0	\$0	\$0	(\$528,000)	\$0	\$0	\$0
MO1408	\$0	\$0	\$0	\$0	\$0	\$0	\$2,400	\$0	\$0	\$0	\$0	\$1,015,600	\$0	\$0	\$1,018,000
MO1409	\$0	\$0	\$0	\$0	\$0	\$0	\$1,800	\$0	\$0	\$0	\$0	\$1,646,200	\$0	\$0	\$1,648,000
MO1501	\$0	\$0	\$0	\$0	\$0	\$0	\$0	\$0	\$0	\$0	\$0	\$52,000	\$0	\$0	\$52,000
MO1503	\$276,000	\$0	\$0	\$0	\$0	\$0	\$0	\$0	\$0	\$0	\$69,000	\$673,000	\$0	\$0	\$1,018,000
MO1505	\$0	\$0	\$0	\$2,000	\$0	\$0	\$0	\$0	\$0	\$0	\$0	\$196,000	\$0	\$0	\$198,000
MO1605	\$0	\$0	\$0	\$1,600	\$0	\$0	\$0	\$0	\$0	\$0	\$0	\$400	\$0	\$0	\$2,000
MO1705	\$0	\$0	\$0	\$1,600	\$0	\$0	\$0	\$0	\$0	\$0	\$0	\$400	\$0	\$0	\$2,000
NX0801	\$0	\$0	\$0	\$0	\$0	\$0	\$0	\$0	\$0	\$0	\$1,530,000	\$0	\$0	\$0	\$1,530,000
NX0906	\$0	\$0	\$0	\$1,748,541	\$0	\$0	\$0	\$0	\$0	\$0	\$1,746,941	\$400	\$0	\$0	\$3,495,882
NX1501	\$0	\$0	\$0	\$0	\$0	\$0	\$0	\$0	\$0	\$0	\$150,000	\$0	\$0	\$0	\$150,000
OK1401	\$0	\$0	\$0	\$1,600	\$0	\$0	\$0	\$0	\$0	\$0	\$0	\$400	\$0	\$0	\$2,000
RG0901	\$0	\$0	\$0	\$0	\$0	\$0	\$1,600	\$0	\$0	\$0	\$0	\$400	\$0	\$0	\$2,000
RG1201	\$0	\$0	\$0	\$0	\$0	\$0	\$800	\$0	\$0	\$0	\$0	\$200	\$0	\$0	\$1,000
RP1301	\$0	\$0	\$0	\$1,257,600	\$0	\$0	\$88,800	\$0	\$0	\$0	\$0	(\$1,346,400)	\$0	\$0	\$0
RP1401	\$0	\$0	\$0	\$0	\$0	\$0	\$1,600	\$0	\$0	\$0	\$0	\$400	\$0	\$0	\$2,000
SP1018	\$0	\$0	\$328,000	\$0	\$0	\$0	\$0	\$0	\$0	\$0	\$0	\$82,000	\$0	\$0	\$410,000
SP1106	\$0	\$0	\$0	\$102,400	\$0	\$0	\$0	\$0	\$0	\$0	\$1,179,000	\$1,408,600	\$0	\$0	\$2,690,000
SP1108	\$0	\$0	\$0	\$0	\$0	\$0	\$4,600,380	\$0	\$0	\$0	\$0	(\$4,600,380)	\$0	\$0	\$0
SP1109	\$658,533	\$0	\$0	\$0	\$0	\$0	\$0	\$0	\$0	\$0	\$1,190,415	\$5,478,523	\$0	\$0	\$7,327,471
SP1112	\$0	\$0	\$0	\$0	\$0	\$0	\$4,000	\$0	\$0	\$0	\$0	\$59,000	\$0	\$0	\$63,000
SP1114	\$0	\$0	\$0	\$0	\$0	\$160,000	\$0	\$0	\$0	\$0	\$0	\$0	\$0	\$40,000	\$200,000
SP1120	\$0	\$0	\$0	\$0	\$0	\$4,000	\$0	\$0	\$0	\$0	\$0	\$0	\$0	\$1,000	\$5,000
SP1122	\$0	\$0	\$0	\$0	\$0	\$0	\$0	\$0	\$0	\$0	\$0	\$0	\$0	\$0	\$0
SP1204	\$0	\$0	\$0	\$0	\$0	\$0	\$1,600	\$0	\$0	\$0	\$0	\$400	\$0	\$0	\$2,000
SP1206	\$0	\$0	\$0	\$0	\$0	\$0	\$466,933	\$0	\$0	\$0	\$0	(\$466,933)	\$0	\$0	\$0
SP1213	\$0	\$0	\$0	\$184,000	\$0	\$0	\$0	\$0	\$0	\$0	\$0	(\$184,000)	\$0	\$0	\$0
SP1312	\$0	\$0	\$0	\$0	\$0	\$0	\$1,849,600	\$0	\$0	\$0	\$0	(\$1,849,600)	\$0	\$0	\$0
SP1313	\$0	\$0	\$0	\$0	\$0	\$0	\$3,625,942	\$0	\$0	\$0	\$0	(\$3,625,942)	\$0	\$0	\$0
SP1314	\$0	\$0	\$0	\$0	\$0	\$0	\$1,012,800	\$0	\$0	\$0	\$0	(\$1,012,800)	\$0	\$0	\$0
SP1315	\$0	\$0	\$0	\$0	\$0	\$0	\$3,200	\$0	\$0	\$0	\$0	\$573,800	\$0	\$0	\$577,000
SP1316	\$0	\$0	\$0	\$0	\$0	\$0	\$13,600	\$0	\$0	\$0	\$0	\$1,896,400	\$0	\$0	\$1,910,000
SP1317	\$0	\$0	\$0	\$0	\$0	\$0	\$4,000	\$0	\$0	\$0	\$0	(\$4,000)	\$0	\$0	\$0
SP1318	\$0	\$0	\$0	\$0	\$0	\$0	\$8,000	\$0	\$0	\$0	\$0	\$1,258,000	\$0	\$0	\$1,266,000
SP1319	\$0	\$0	\$0	\$0	\$0	\$0	\$799,200	\$0	\$0	\$0	\$0	(\$799,200)	\$0	\$0	\$0
SP1321	\$10,000	\$0	\$0	\$0	\$0	\$0	\$0	\$0	\$0	\$0	\$3,984	\$0	\$0	\$0	\$13,984
SP1323	\$0	\$0	\$0	\$0	\$0	\$0	\$4,000	\$0	\$0	\$0	\$0	(\$4,000)	\$0	\$0	\$0
SP1324	\$0	\$0	\$0	\$0	\$0	\$0	\$375,200	\$0	\$0	\$0	\$0	(\$375,200)	\$0	\$0	\$0
SP1401	\$0	\$0	\$0	\$0	\$0	\$0	\$2,400	\$0	\$0	\$0	\$0	\$2,600	\$0	\$0	\$5,000
SP1403	\$0	\$0	\$0	\$481,600	\$0	\$0	\$0	\$0	\$0	\$0	\$0	(\$481,600)	\$0	\$0	\$0

FINANCIAL SUMMARY

Roadways

YEARLY SUMMARY														
PROJECT	Federal									Local	State			TOTAL
	FHWA (STP-U)	FHWA (SAFETY)	FHWA (BRIDGE)	FHWA (STP)	FHWA (I/M)	FHWA (130)	FHWA (NHS)	FHWA (BRM)	FHWA (BRO)	LOCAL	MoDOT	MoDOT-AC	MoDOT-GCSA	
FY 2015 continued														
SP1404	\$0	\$0	\$0	\$312,000	\$0	\$0	\$0	\$0	\$0	\$0	\$0	(\$312,000)	\$0	\$0
SP1405	\$0	\$0	\$0	\$0	\$0	\$0	\$0	\$0	\$0	\$0	\$0	\$2,000	\$0	\$2,000
SP1407	\$0	\$0	\$0	\$0	\$0	\$0	\$624,000	\$0	\$0	\$0	\$0	(\$624,000)	\$0	\$0
SP1408	\$0	\$0	\$0	\$0	\$0	\$0	\$0	\$0	\$0	\$0	\$1,277,000	\$0	\$0	\$1,277,000
SP1409	\$0	\$0	\$0	\$0	\$1,800	\$0	\$0	\$0	\$0	\$0	\$110,200	\$0	\$0	\$112,000
SP1410	\$0	\$0	\$0	\$0	\$0	\$0	\$1,600	\$0	\$0	\$0	\$394,400	\$0	\$0	\$396,000
SP1411	\$0	\$0	\$0	\$0	\$0	\$0	\$4,800	\$0	\$0	\$0	\$695,200	\$0	\$0	\$700,000
SP1501	\$0	\$0	\$0	\$0	\$0	\$0	\$300,800	\$0	\$0	\$0	\$75,200	\$0	\$0	\$376,000
ST1101	\$0	\$0	\$0	\$511,700	\$0	\$0	\$0	\$0	\$0	\$0	(\$511,700)	\$0	\$0	\$0
ST1201	\$0	\$0	\$0	\$467,200	\$0	\$0	\$0	\$0	\$0	\$0	(\$467,200)	\$0	\$0	\$0
ST1401	\$0	\$0	\$0	\$176,000	\$0	\$0	\$0	\$0	\$0	\$0	(\$176,000)	\$0	\$0	\$0
WI1301	\$0	\$0	\$0	\$2,400	\$0	\$0	\$0	\$0	\$0	\$0	\$2,600	\$0	\$0	\$5,000
SUBTOTAL	\$3,424,533	\$911,900	\$328,000	\$10,326,141	\$181,800	\$2,206,500	\$17,549,455	\$0	\$0	\$7,428,384	\$6,304,568	\$1,600	\$273,500	\$48,936,381

FINANCIAL SUMMARY

Roadways

YEARLY SUMMARY														
PROJECT	Federal									Local	State			TOTAL
	FHWA (STP-U)	FHWA (SAFETY)	FHWA (BRIDGE)	FHWA (STP)	FHWA (I/M)	FHWA (130)	FHWA (NHS)	FHWA (BRM)	FHWA (BRO)	LOCAL	MoDOT	MoDOT-AC	MoDOT-GCSA	
FY 2016														
CC0901	\$0	\$0	\$0	\$1,600	\$0	\$0	\$0	\$0	\$0	\$0	\$400	\$0	\$0	\$2,000
CC1102	\$0	\$0	\$0	\$0	\$0	\$0	\$1,600	\$0	\$0	\$0	\$400	\$0	\$0	\$2,000
CC1110	\$0	\$0	\$0	\$0	\$0	\$0	\$3,364,000	\$0	\$0	\$0	(\$3,364,000)	\$0	\$0	\$0
GR1010	\$0	\$0	\$0	\$0	\$0	\$0	\$8,532,000	\$0	\$0	\$0	(\$8,532,000)	\$0	\$0	\$0
GR1104	\$0	\$0	\$0	\$0	\$0	\$40,000	\$0	\$0	\$0	\$0	\$0	\$0	\$10,000	\$50,000
GR1304	\$0	\$0	\$0	\$0	\$0	\$0	\$0	\$0	\$0	\$0	\$0	\$0	\$0	\$0
GR1403	\$0	\$0	\$0	\$0	\$0	\$0	\$0	\$0	\$0	\$0	\$2,000	\$0	\$0	\$2,000
GR1408	\$0	\$0	\$0	\$0	\$0	\$0	\$0	\$0	\$0	\$0	\$400	\$1,600	\$0	\$2,000
MO1105	\$0	\$0	\$0	\$0	\$0	\$0	\$0	\$0	\$0	\$0	\$284,000	\$0	\$0	\$284,000
MO1201	\$0	\$2,700	\$0	\$0	\$0	\$0	\$0	\$0	\$0	\$0	\$300	\$0	\$0	\$3,000
MO1404	\$0	\$0	\$0	\$0	\$0	\$0	\$1,600	\$0	\$0	\$0	\$22,400	\$0	\$0	\$24,000
MO1406	\$0	\$0	\$0	\$637,600	\$0	\$0	\$0	\$0	\$0	\$0	(\$637,600)	\$0	\$0	\$0
MO1408	\$0	\$0	\$0	\$0	\$0	\$0	\$814,400	\$0	\$0	\$0	(\$814,400)	\$0	\$0	\$0
MO1409	\$0	\$0	\$0	\$0	\$0	\$0	\$1,318,400	\$0	\$0	\$0	(\$1,318,400)	\$0	\$0	\$0
MO1503	\$0	\$0	\$0	\$538,400	\$0	\$0	\$0	\$0	\$0	\$0	(\$538,400)	\$0	\$0	\$0
MO1505	\$0	\$0	\$0	\$164,000	\$0	\$0	\$0	\$0	\$0	\$0	(\$164,000)	\$0	\$0	\$0
MO1601	\$0	\$0	\$0	\$0	\$0	\$0	\$0	\$0	\$0	\$0	\$51,000	\$0	\$0	\$51,000
MO1603	\$284,000	\$0	\$0	\$0	\$0	\$0	\$0	\$0	\$0	\$71,000	\$673,000	\$0	\$0	\$1,028,000
MO1604	\$0	\$915,300	\$0	\$0	\$0	\$0	\$0	\$0	\$0	\$0	\$101,700	\$0	\$0	\$1,017,000
MO1605	\$0	\$0	\$0	\$7,000	\$0	\$0	\$0	\$0	\$0	\$0	\$197,000	\$0	\$0	\$204,000
MO1705	\$0	\$0	\$0	\$1,600	\$0	\$0	\$0	\$0	\$0	\$0	\$400	\$0	\$0	\$2,000
NX0906	\$0	\$0	\$0	\$1,600	\$0	\$0	\$0	\$0	\$0	\$0	\$400	\$0	\$0	\$2,000
NX1502	\$0	\$0	\$0	\$0	\$0	\$0	\$0	\$0	\$0	\$1,500,000	\$0	\$0	\$0	\$1,500,000
OK1401	\$0	\$0	\$0	\$1,600	\$0	\$0	\$0	\$0	\$0	\$0	\$400	\$0	\$0	\$2,000
RG0901	\$0	\$0	\$0	\$0	\$0	\$0	\$1,600	\$0	\$0	\$0	\$400	\$0	\$0	\$2,000
RG1201	\$0	\$0	\$0	\$0	\$0	\$0	\$800	\$0	\$0	\$0	\$7,200	\$0	\$0	\$8,000
RP1401	\$0	\$0	\$0	\$0	\$0	\$0	\$1,600	\$0	\$0	\$0	\$242,400	\$0	\$0	\$244,000
SP1018	\$0	\$0	\$5,137,600	\$0	\$0	\$0	\$0	\$0	\$0	\$0	\$1,284,400	\$0	\$0	\$6,422,000
SP1106	\$0	\$0	\$0	\$1,382,000	\$0	\$0	\$0	\$0	\$0	\$0	(\$1,382,000)	\$0	\$0	\$0
SP1109	\$0	\$0	\$0	\$0	\$0	\$0	\$1,928,440	\$0	\$0	\$0	(\$1,928,440)	\$0	\$0	\$0
SP1112	\$0	\$0	\$0	\$0	\$0	\$0	\$50,400	\$0	\$0	\$0	\$49,600	\$0	\$0	\$100,000
SP1204	\$0	\$0	\$0	\$0	\$0	\$0	\$1,600	\$0	\$0	\$0	\$400	\$0	\$0	\$2,000
SP1305	\$0	\$0	\$0	\$0	\$0	\$160,000	\$0	\$0	\$0	\$0	\$40,000	\$0	\$0	\$200,000
SP1307	\$0	\$0	\$0	\$0	\$0	\$160,000	\$0	\$0	\$0	\$0	\$40,000	\$0	\$0	\$200,000
SP1308	\$0	\$0	\$0	\$0	\$0	\$160,000	\$0	\$0	\$0	\$0	\$40,000	\$0	\$0	\$200,000
SP1315	\$0	\$0	\$0	\$435,200	\$0	\$0	\$26,400	\$0	\$0	\$0	(\$461,600)	\$0	\$0	\$0
SP1316	\$0	\$0	\$0	\$0	\$0	\$0	\$1,528,000	\$0	\$0	\$0	(\$1,528,000)	\$0	\$0	\$0
SP1317	\$0	\$0	\$0	\$0	\$0	\$0	\$684,000	\$0	\$0	\$0	(\$684,000)	\$0	\$0	\$0
SP1318	\$0	\$0	\$0	\$57,600	\$0	\$0	\$955,200	\$0	\$0	\$0	(\$1,012,800)	\$0	\$0	\$0
SP1321	\$10,000	\$0	\$0	\$0	\$0	\$0	\$0	\$0	\$0	\$3,984	\$0	\$0	\$0	\$13,984
SP1401	\$0	\$0	\$0	\$0	\$0	\$0	\$4,000	\$0	\$0	\$0	\$22,000	\$0	\$0	\$26,000
SP1405	\$0	\$0	\$0	\$0	\$0	\$0	\$0	\$0	\$0	\$0	\$2,000	\$0	\$0	\$2,000
SP1409	\$0	\$0	\$0	\$0	\$100,800	\$0	\$0	\$0	\$0	\$0	\$9,770,200	\$0	\$0	\$9,871,000
SP1410	\$0	\$0	\$0	\$0	\$0	\$0	\$316,800	\$0	\$0	\$0	\$8,902,200	\$0	\$0	\$9,219,000
SP1411	\$0	\$0	\$0	\$0	\$0	\$0	\$560,000	\$0	\$0	\$0	(\$560,000)	\$0	\$0	\$0
WH1301	\$0	\$0	\$0	\$4,000	\$0	\$0	\$0	\$0	\$0	\$0	\$46,000	\$0	\$0	\$50,000
SUBTOTAL	\$294,000	\$918,000	\$5,137,600	\$3,232,200	\$100,800	\$520,000	\$20,090,840	\$0	\$0	\$1,574,984	(\$1,145,040)	\$1,600	\$10,000	\$30,734,984

FINANCIAL SUMMARY

Roadways

YEARLY SUMMARY														
PROJECT	Federal									Local	State			TOTAL
	FHWA (STP-U)	FHWA (SAFETY)	FHWA (BRIDGE)	FHWA (STP)	FHWA (I/M)	FHWA (130)	FHWA (NHS)	FHWA (BRM)	FHWA (BRO)	LOCAL	MoDOT	MoDOT-AC	MoDOT-GCSA	
FY 2017														
CC0901	\$0	\$0	\$0	\$1,600	\$0	\$0	\$0	\$0	\$0	\$0	\$400	\$0	\$0	\$2,000
CC1102	\$0	\$0	\$0	\$0	\$0	\$0	\$1,600	\$0	\$0	\$0	\$400	\$0	\$0	\$2,000
GR1403	\$0	\$0	\$0	\$0	\$0	\$0	\$0	\$0	\$0	\$0	\$2,000	\$0	\$0	\$2,000
MO1105	\$0	\$0	\$0	\$0	\$0	\$0	\$0	\$0	\$0	\$0	\$284,000	\$0	\$0	\$284,000
MO1201	\$0	\$81,900	\$0	\$0	\$0	\$0	\$0	\$0	\$0	\$0	\$9,100	\$0	\$0	\$91,000
<i>MO1404</i>	<i>\$0</i>	<i>\$0</i>	<i>\$0</i>	<i>\$0</i>	<i>\$0</i>	<i>\$0</i>	<i>\$5,328,000</i>	<i>\$0</i>	<i>\$0</i>	<i>\$0</i>	<i>\$1,308,000</i>	<i>\$0</i>	<i>\$0</i>	<i>\$6,636,000</i>
MO1603	\$0	\$0	\$0	\$538,400	\$0	\$0	\$0	\$0	\$0	\$0	(\$538,400)	\$0	\$0	\$0
MO1605	\$0	\$0	\$0	\$164,000	\$0	\$0	\$0	\$0	\$0	\$0	(\$164,000)	\$0	\$0	\$0
MO1701	\$292,000	\$0	\$0	\$0	\$0	\$0	\$0	\$0	\$0	\$73,000	\$673,000	\$0	\$0	\$1,038,000
MO1705	\$0	\$0	\$0	\$2,017	\$0	\$0	\$0	\$0	\$0	\$0	\$203,400	\$0	\$0	\$205,417
NX0906	\$0	\$0	\$0	\$1,600	\$0	\$0	\$0	\$0	\$0	\$0	\$400	\$0	\$0	\$2,000
OK1401	\$0	\$0	\$0	\$1,600	\$0	\$0	\$0	\$0	\$0	\$0	\$400	\$0	\$0	\$2,000
RG0901	\$0	\$0	\$0	\$0	\$0	\$0	\$1,600	\$0	\$0	\$0	\$400	\$0	\$0	\$2,000
RG1201	\$0	\$0	\$0	\$0	\$0	\$0	\$6,400	\$0	\$0	\$0	\$339,600	\$0	\$0	\$346,000
RP1401	\$0	\$0	\$0	\$0	\$0	\$0	\$195,200	\$0	\$0	\$0	(\$195,200)	\$0	\$0	\$0
SP1109	\$0	\$0	\$0	\$0	\$0	\$0	\$2,454,378	\$0	\$0	\$0	(\$2,454,378)	\$0	\$0	\$0
SP1112	\$0	\$0	\$0	\$0	\$0	\$0	\$200,000	\$0	\$0	\$0	(\$50,000)	\$0	\$0	\$150,000
SP1204	\$0	\$0	\$0	\$0	\$0	\$0	\$1,600	\$0	\$0	\$0	\$39,400	\$0	\$0	\$41,000
SP1401	\$0	\$0	\$0	\$0	\$0	\$0	\$397,600	\$0	\$0	\$0	\$73,400	\$0	\$0	\$471,000
SP1405	\$0	\$0	\$0	\$0	\$0	\$0	\$0	\$0	\$0	\$0	\$2,000	\$0	\$0	\$2,000
SP1409	\$0	\$0	\$0	\$0	\$8,883,900	\$0	\$0	\$0	\$0	\$0	(\$8,883,900)	\$0	\$0	\$0
SP1410	\$0	\$0	\$0	\$0	\$0	\$0	\$7,375,200	\$0	\$0	\$0	(\$7,375,200)	\$0	\$0	\$0
WH1301	\$0	\$0	\$0	\$716,000	\$0	\$0	\$0	\$0	\$0	\$0	\$129,000	\$0	\$0	\$845,000
SUBTOTAL	\$292,000	\$81,900	\$0	\$1,425,217	\$8,883,900	\$0	\$15,961,578	\$0	\$0	\$73,000	(\$16,596,178)	\$0	\$0	\$10,121,417
GRAND TOTAL	\$15,399,094	\$6,074,300	\$7,553,600	\$26,307,521	\$9,382,500	\$3,294,000	\$58,347,525	\$1,189,657	\$1,672,800	\$21,582,592	\$11,707,640	\$1,554,400	\$351,000	\$164,416,629

FINANCIAL CONSTRAINT
Roadways

	FHWA Federal Funding Source										MoDOT Programmed Funds	State Operations and Maintenance	Local	TOTAL
	STP-U	Safety	Bridge	STP	I/M	130	NHS	BRM	BRO	TOTAL Federal Funds				
2014 Funds Programmed	\$11,388,561	\$4,162,500	\$2,088,000	\$11,323,963	\$216,000	\$567,500	\$4,745,652	\$1,189,657	\$1,672,800	\$37,354,633	\$24,762,990	\$6,293,898	\$12,506,224	\$80,917,745
2015 Funds Programmed	\$3,424,533	\$911,900	\$328,000	\$10,326,141	\$181,800	\$2,206,500	\$17,549,455	\$0	\$0	\$34,928,329	\$6,579,668	\$6,419,776	\$7,428,384	\$55,356,157
2016 Funds Programmed	\$294,000	\$918,000	\$5,137,600	\$3,232,200	\$100,800	\$520,000	\$20,090,840	\$0	\$0	\$30,293,440	(\$1,133,440)	\$6,548,171	\$1,574,984	\$37,283,155
2017 Funds Programmed	\$292,000	\$81,900	\$0	\$1,425,217	\$8,883,900	\$0	\$15,961,578	\$0	\$0	\$26,644,595	(\$16,596,178)	\$6,679,135	\$73,000	\$16,800,552
Total	\$15,399,094	\$ 6,074,300	\$ 7,553,600	\$26,307,521	\$ 9,382,500	\$ 3,294,000	\$58,347,525	\$1,189,657	\$1,672,800	\$129,220,997	\$ 13,613,040	\$25,940,980	\$21,582,592	\$190,357,609

	Prior Year	2014	2015	2016	2017	TOTAL
Available State and Federal Funding	\$25,292,494	\$23,240,000	\$23,620,000	\$28,480,000	\$23,040,000	\$123,672,494
Available Operations and Maintenance Funding	\$0	\$6,293,898	\$6,419,776	\$6,548,171	\$6,679,135	\$25,940,980
Available Suballocated STP-U/Small Urban	\$24,683,089	\$5,414,570	\$5,414,570	\$4,580,384	\$4,580,384	\$44,672,997
Available Suballocated BRM	\$2,201,457	\$386,195	\$386,195	\$386,195	\$386,195	\$3,746,237
TOTAL AVAILABLE FUNDING	\$52,177,040	\$35,334,663	\$35,840,541	\$39,994,750	\$34,685,714	\$198,032,708
Programmed State and Federal Funding	\$0	(\$68,411,521)	(\$47,927,773)	(\$35,708,171)	(\$16,727,552)	(\$168,775,017)
TOTAL REMAINING (including prior balance)	\$52,177,040	\$19,100,182	\$7,012,950	\$11,299,529	\$29,257,691	\$29,257,691

Remaining State and Federal Funding	(\$2,572,792)
Remaining Suballocated STP-Urban/Small Urban	\$29,273,903
Remaining Suballocated BRM	\$2,556,580
TOTAL REMAINING	\$29,257,691