



OZARKS TRANSPORTATION ORGANIZATION
A METROPOLITAN PLANNING ORGANIZATION

205 PARK CENTRAL EAST, SUITE 205 SPRINGFIELD, MO 65806 417-865-3042 [p] 417-862-6013 [f]

18 March 2015

Ms. Eva Voss
Transportation Planning
Missouri Department of Transportation
P. O. Box 270
Jefferson City, Missouri 65102

Dear Ms. Voss:

I am writing to advise you that the Ozarks Transportation Organization approved Administrative Modification Number Four to the OTO FY 2015-2018 Transportation Improvement Program (TIP) on March 18, 2015. The adoption included demonstration of fiscal constraint as required by federal regulations. Please find enclosed the administrative modification, which includes the following:

Revisions:

- **Changes in project's programmed amount less than 15% (up to \$2,000,000)**
- **Minor changes to funding sources between federal categories or between state and local sources**

East Chestnut Expressway Railroad Overpass (SP1109)

Cost estimates were reduced for this project, plus BNSF added funding to the project.

Please let me know if you have any questions or need any other information.

Sincerely,

Natasha L. Longpine, AICP
Principal Planner





E) Roadways Section

TIP # SP1109 **EAST CHESTNUT EXPRESSWAY RAILROAD OVERPASS**

Route Chestnut Expressway

From Chestnut Expressway

To BNSF Railway

Location/Agency City of Springfield

Federal Agency FHWA

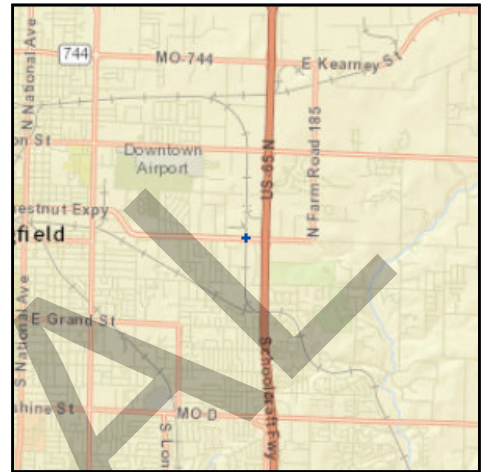
Responsible Agency MoDOT

Federal Funding Category NHPP(NHS), STP

MoDOT Funding Category Major Projects and Emerging Needs

AC Year of Conv. FY 2015 and FY 2016

STIP # 8P2196



Project Description

Construct a grade separated crossing at the Chestnut Expressway (Business 65) BNSF railway crossing 0.2 miles west of Route 65.

Fund Code	Source	Phase	FY2015	FY2016	FY2017	FY2018	Total
MoDOT	State	ENG	\$429,000	\$0	\$0	\$0	\$429,000
FHWA (130)	Federal	CON	\$2,250,000	\$0	\$0	\$0	\$2,250,000
FHWA (STP-U)	Federal	CON	\$1,966,300	\$0	\$0	\$0	\$1,966,300
MoDOT	State	CON	\$1,004,140	\$0	\$0	\$0	\$1,004,140
MoDOT-AC	State	CON	\$4,016,560	\$0	\$0	\$0	\$4,016,560
MoDOT-GCSA	State	CON	\$750,000	\$0	\$0	\$0	\$750,000
Totals			\$10,416,000	\$0	\$0	\$0	\$10,416,000

Notes

Source of State Funds: State transportation revenues in statewide cost share program. Local Funds: Springfield 1/8-cent transportation sales tax. \$4,846,523 MoDOT Cost Share Program (\$969,305 State funds, \$3,877,218 State AC), \$2,000,000 Springfield Local, \$3,633,700 Springfield STP-U, \$400,000 Greene STP-U.

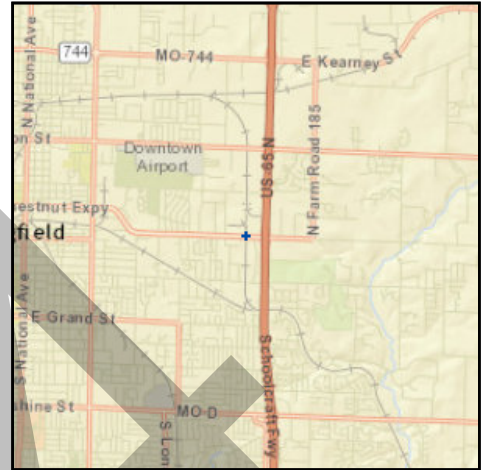
Prior Cost	\$4,651,400
Future Cost	\$0
Total Cost	\$15,067,400



E) Roadways Section

TIP # SP1109 **EAST CHESTNUT EXPRESSWAY RAILROAD OVERPASS**

Route Chestnut Expressway
From Chestnut Expressway
To BNSF Railway
Location/Agency City of Springfield
Federal Agency FHWA
Responsible Agency MoDOT
Federal Funding Category NHPP(NHS), STP
MoDOT Funding Category Major Projects and Emerging Needs
AC Year of Conv. FY 2015 and FY 2016
STIP # 8P2196



Project Description

Construct a grade separated crossing at the Chestnut Expressway (Business 65) BNSF railway crossing 0.2 miles west of Route 65.

Fund Code	Source	Phase	FY2015	FY2016	FY2017	FY2018	Total
MoDOT	State	ENG	\$429,000	\$0	\$0	\$0	\$429,000
OTHER	Other	CAPITAL	\$343,000	\$0	\$0	\$0	\$343,000
FHWA (130)	Federal	CON	\$2,250,000	\$0	\$0	\$0	\$2,250,000
FHWA (STP-U)	Federal	CON	\$1,506,000	\$0	\$0	\$0	\$1,506,000
MoDOT	State	CON	\$969,400	\$0	\$0	\$0	\$969,400
MoDOT-AC	State	CON	\$3,877,600	\$0	\$0	\$0	\$3,877,600
MoDOT-GCSA	State	CON	\$750,000	\$0	\$0	\$0	\$750,000
Totals			\$10,125,000	\$0	\$0	\$0	\$10,125,000

Notes

Source of State Funds: State transportation revenues in statewide cost share program. Local Funds: Springfield 1/8-cent transportation sales tax. \$4,846,523 MoDOT Cost Share Program (\$969,400 State funds, \$3,877,600 State AC), \$2,000,000 Springfield Local, \$3,633,700 Springfield STP-U, \$400,000 Greene STP-U and \$343,000 BNSF.

Prior Cost	\$4,651,400
Future Cost	\$0
Total Cost	\$14,776,400

FINANCIAL SUMMARY

Roadways

YEARLY SUMMARY

PROJECT	Federal							Local	State			Other	TOTAL
	FHWA (STP-U)	FHWA (SAFETY)	FHWA (BRIDGE)	FHWA (STP)	FHWA (130)	FHWA (HPP)	FHWA (BRO)	LOCAL	MoDOT	MoDOT-GCSA	MoDOT-AC	OTHER	
FY 2015													
BA1101	\$8,000	\$0	\$0	\$0	\$0	\$0	\$0	\$2,000	\$0	\$0	\$0	\$0	\$10,000
CC0901	\$0	\$0	\$0	\$0	\$0	\$0	\$0	\$0	\$400	\$0	\$1,600	\$0	\$2,000
CC1102	\$0	\$0	\$0	\$0	\$0	\$0	\$0	\$0	\$400	\$0	\$1,600	\$0	\$2,000
CC1110	\$2,072,000	\$0	\$0	\$0	\$0	\$0	\$0	\$1,557,044	\$97,600	\$0	\$3,893,356	\$0	\$7,620,000
GR1010	\$0	\$911,000	\$0	\$0	\$0	\$0	\$0	\$0	\$2,369,000	\$0	\$9,071,000	\$0	\$12,351,000
GR1104	\$0	\$0	\$0	\$0	\$160,000	\$0	\$0	\$0	\$0	\$40,000	\$0	\$0	\$200,000
GR1213	\$0	\$0	\$0	\$0	\$0	\$0	\$1,133,600	\$283,400	\$0	\$0	\$0	\$0	\$1,417,000
GR1312	\$0	\$0	\$0	\$0	\$0	\$0	\$371,200	\$92,800	\$0	\$0	\$0	\$0	\$464,000
GR1402	\$0	\$0	\$0	\$168,800	\$1,049,967	\$0	\$0	\$0	\$105,200	\$1,048,968	\$0	\$126,065	\$2,499,000
GR1403	\$0	\$0	\$0	\$0	\$0	\$0	\$0	\$0	\$400	\$0	\$1,600	\$0	\$2,000
GR1408	\$0	\$0	\$0	\$0	\$0	\$0	\$0	\$0	\$400	\$0	\$1,600	\$0	\$2,000
GR1501	\$1,200,000	\$0	\$0	\$0	\$0	\$0	\$0	\$300,000	\$0	\$0	\$0	\$0	\$1,500,000
GR1502	\$960,000	\$0	\$0	\$0	\$0	\$0	\$0	\$240,000	\$0	\$0	\$0	\$0	\$1,200,000
MO1105	\$0	\$0	\$0	\$0	\$0	\$0	\$0	\$0	\$284,000	\$0	\$0	\$0	\$284,000
MO1201	\$0	\$1,800	\$0	\$0	\$0	\$0	\$0	\$0	\$200	\$0	\$0	\$0	\$2,000
MO1404	\$0	\$0	\$0	\$0	\$0	\$0	\$0	\$0	\$400	\$0	\$1,600	\$0	\$2,000
MO1405	\$0	\$0	\$0	\$0	\$0	\$0	\$0	\$0	\$25,000	\$0	\$0	\$0	\$25,000
MO1408	\$0	\$0	\$0	\$0	\$0	\$0	\$0	\$0	\$196,000	\$0	\$784,000	\$0	\$980,000
MO1409	\$0	\$0	\$0	\$0	\$0	\$0	\$0	\$0	\$330,800	\$0	\$1,323,200	\$0	\$1,654,000
MO1501	\$0	\$32,000	\$0	\$0	\$0	\$0	\$0	\$0	\$0	\$0	\$0	\$0	\$32,000
MO1503	\$276,000	\$0	\$0	\$0	\$0	\$0	\$0	\$69,000	\$134,600	\$0	\$538,400	\$0	\$1,018,000
MO1504	\$0	\$0	\$0	\$0	\$0	\$0	\$0	\$0	\$21,600	\$0	\$194,400	\$0	\$216,000
MO1505	\$0	\$0	\$0	\$0	\$0	\$0	\$0	\$0	\$37,800	\$0	\$151,200	\$0	\$189,000
MO1601	\$0	\$0	\$0	\$0	\$0	\$0	\$0	\$0	\$2,000	\$0	\$0	\$0	\$2,000
MO1604	\$0	\$55,800	\$0	\$0	\$0	\$0	\$0	\$0	\$6,200	\$0	\$0	\$0	\$62,000
MO1605	\$0	\$0	\$0	\$0	\$0	\$0	\$0	\$0	\$400	\$0	\$1,600	\$0	\$2,000
MO1705	\$0	\$0	\$0	\$0	\$0	\$0	\$0	\$0	\$400	\$0	\$1,600	\$0	\$2,000
NX0601	\$949,612	\$0	\$0	\$0	\$0	\$0	\$0	\$1,188,388	\$0	\$0	\$0	\$0	\$2,138,000
NX0906	\$0	\$0	\$0	\$0	\$0	\$0	\$0	\$0	\$10,800	\$0	\$43,200	\$0	\$54,000
OK1401	\$0	\$0	\$0	\$0	\$0	\$0	\$0	\$0	\$400	\$0	\$1,600	\$0	\$2,000
RG0901	\$0	\$0	\$0	\$0	\$0	\$0	\$0	\$0	\$400	\$0	\$1,600	\$0	\$2,000
RG1201	\$0	\$0	\$0	\$0	\$0	\$0	\$0	\$0	\$400	\$0	\$1,600	\$0	\$2,000
RP1401	\$0	\$0	\$0	\$0	\$0	\$0	\$0	\$0	\$400	\$0	\$1,600	\$0	\$2,000
RP1501	\$40,000	\$0	\$0	\$0	\$0	\$0	\$0	\$10,000	\$0	\$0	\$0	\$0	\$50,000
SP1018	\$0	\$0	\$248,000	\$0	\$0	\$0	\$0	\$0	\$62,000	\$0	\$0	\$0	\$310,000
SP1106	\$0	\$0	\$0	\$0	\$0	\$0	\$0	\$0	\$1,000	\$0	\$4,000	\$0	\$5,000
SP1109	\$1,506,000	\$0	\$0	\$0	\$2,250,000	\$0	\$0	\$0	\$1,398,400	\$750,000	\$3,877,600	\$343,000	\$10,125,000
SP1112	\$0	\$0	\$0	\$0	\$0	\$0	\$0	\$0	\$400	\$0	\$1,600	\$0	\$2,000
SP1114	\$0	\$0	\$0	\$0	\$160,000	\$0	\$0	\$0	\$0	\$40,000	\$0	\$0	\$200,000
SP1120	\$0	\$0	\$0	\$0	\$4,000	\$0	\$0	\$0	\$0	\$1,000	\$0	\$0	\$5,000
SP1204	\$0	\$0	\$0	\$0	\$0	\$0	\$0	\$0	\$400	\$0	\$1,600	\$0	\$2,000
SP1209	\$0	\$0	\$0	\$499,915	\$0	\$0	\$0	\$124,979	\$0	\$0	\$0	\$0	\$624,894
SP1315	\$0	\$0	\$0	\$0	\$0	\$0	\$0	\$0	\$88,200	\$0	\$352,800	\$0	\$441,000
SP1316	\$0	\$0	\$0	\$0	\$0	\$0	\$0	\$0	\$391,800	\$0	\$1,567,200	\$0	\$1,959,000
SP1318	\$0	\$0	\$0	\$0	\$0	\$0	\$0	\$0	\$233,000	\$0	\$932,000	\$0	\$1,165,000
SP1321	\$10,000	\$0	\$0	\$0	\$0	\$0	\$0	\$3,984	\$0	\$0	\$0	\$0	\$13,984
SP1323	\$47,000	\$0	\$0	\$0	\$0	\$0	\$0	\$10,000	\$32,600	\$0	\$126,400	\$0	\$216,000

FY 2015 continued on next page

FINANCIAL SUMMARY

Roadways

YEARLY SUMMARY

PROJECT	Federal							Local	State			Other	TOTAL
	FHWA (STP-U)	FHWA (SAFETY)	FHWA (BRIDGE)	FHWA (STP)	FHWA (130)	FHWA (HPP)	FHWA (BRO)	LOCAL	MoDOT	MoDOT-GCSA	MoDOT-AC	OTHER	
FY 2015 continued													
SP1401	\$0	\$0	\$0	\$0	\$0	\$0	\$0	\$0	\$1,000	\$0	\$4,000	\$0	\$5,000
SP1403	\$0	\$0	\$0	\$0	\$0	\$0	\$0	\$0	\$480,800	\$0	\$480,800	\$0	\$601,000
SP1405	\$0	\$0	\$0	\$0	\$0	\$0	\$0	\$0	\$400	\$0	\$1,600	\$0	\$2,000
SP1408	\$0	\$0	\$0	\$0	\$0	\$0	\$0	\$0	\$255,400	\$0	\$1,021,600	\$0	\$1,277,000
SP1409	\$0	\$0	\$0	\$0	\$0	\$0	\$0	\$0	\$7,300	\$0	\$65,700	\$0	\$73,000
SP1410	\$0	\$0	\$0	\$0	\$0	\$0	\$0	\$0	\$40,000	\$0	\$160,000	\$0	\$200,000
SP1411	\$0	\$0	\$0	\$0	\$0	\$0	\$0	\$0	\$109,600	\$0	\$438,400	\$0	\$548,000
SP1415	\$0	\$0	\$0	\$0	\$0	\$0	\$0	\$0	\$22,800	\$0	\$91,200	\$0	\$114,000
SP1416	\$0	\$0	\$0	\$0	\$0	\$0	\$0	\$0	\$400	\$0	\$1,600	\$0	\$2,000
SP1501	\$0	\$0	\$0	\$0	\$0	\$0	\$0	\$0	\$75,200	\$0	\$300,800	\$0	\$376,000
WI1301	\$0	\$0	\$0	\$0	\$0	\$0	\$0	\$0	\$1,000	\$0	\$4,000	\$0	\$5,000
WI1501	\$40,000	\$0	\$0	\$0	\$0	\$0	\$0	\$10,000	\$0	\$0	\$0	\$0	\$50,000
SUBTOTAL	\$7,108,612	\$1,000,600	\$248,000	\$668,715	\$3,623,967	\$0	\$1,504,800	\$3,891,595	\$6,466,300	\$1,879,968	\$25,449,256	\$469,065	\$52,310,878
FY 2016													
CC0901	\$0	\$0	\$0	\$0	\$0	\$0	\$0	\$0	\$400	\$0	\$1,600	\$0	\$2,000
CC1102	\$0	\$0	\$0	\$0	\$0	\$0	\$0	\$0	\$400	\$0	\$1,600	\$0	\$2,000
GR1104	\$0	\$0	\$0	\$0	\$128,000	\$0	\$0	\$0	\$0	\$32,000	\$0	\$0	\$160,000
GR1403	\$0	\$0	\$0	\$0	\$0	\$0	\$0	\$0	\$400	\$0	\$1,600	\$0	\$2,000
GR1408	\$0	\$0	\$0	\$0	\$0	\$0	\$0	\$0	\$400	\$0	\$1,600	\$0	\$2,000
GR1501	\$1,200,000	\$0	\$0	\$0	\$0	\$0	\$0	\$300,000	\$0	\$0	\$0	\$0	\$1,500,000
GR1601	\$0	\$0	\$0	\$0	\$0	\$0	\$320,000	\$80,000	\$0	\$0	\$0	\$0	\$400,000
MO1105	\$0	\$0	\$0	\$0	\$0	\$0	\$0	\$0	\$284,000	\$0	\$0	\$0	\$284,000
MO1201	\$0	\$2,700	\$0	\$0	\$0	\$0	\$0	\$0	\$300	\$0	\$0	\$0	\$3,000
MO1404	\$0	\$0	\$0	\$0	\$0	\$0	\$0	\$0	\$4,800	\$0	\$19,200	\$0	\$24,000
MO1601	\$0	\$50,000	\$0	\$0	\$0	\$0	\$0	\$0	\$3,000	\$0	\$0	\$0	\$53,000
MO1603	\$284,000	\$0	\$0	\$0	\$0	\$0	\$0	\$71,000	\$134,600	\$0	\$538,400	\$0	\$1,028,000
MO1604	\$0	\$980,100	\$0	\$0	\$0	\$0	\$0	\$0	\$108,900	\$0	\$0	\$0	\$1,089,000
MO1605	\$0	\$0	\$0	\$0	\$0	\$0	\$0	\$0	\$38,800	\$0	\$155,200	\$0	\$194,000
MO1705	\$0	\$0	\$0	\$0	\$0	\$0	\$0	\$0	\$400	\$0	\$1,600	\$0	\$2,000
NX0906	\$1,307,001	\$0	\$0	\$0	\$0	\$0	\$0	\$326,750	\$362,000	\$0	\$1,448,000	\$0	\$3,443,751
OK1401	\$0	\$0	\$0	\$0	\$0	\$0	\$0	\$0	\$400	\$0	\$1,600	\$0	\$2,000
RG0901	\$0	\$0	\$0	\$0	\$0	\$0	\$0	\$0	\$400	\$0	\$1,600	\$0	\$2,000
RG1201	\$0	\$0	\$0	\$0	\$0	\$0	\$0	\$0	\$1,400	\$0	\$5,600	\$0	\$7,000
RP1401	\$0	\$0	\$0	\$0	\$0	\$0	\$0	\$0	\$41,000	\$0	\$164,000	\$0	\$205,000
SP1018	\$0	\$0	\$4,651,200	\$0	\$0	\$0	\$0	\$0	\$1,162,800	\$0	\$0	\$0	\$5,814,000
SP1106	\$0	\$0	\$0	\$0	\$0	\$0	\$0	\$0	\$400	\$0	\$1,600	\$0	\$2,000
SP1112	\$0	\$0	\$0	\$0	\$0	\$0	\$0	\$0	\$16,000	\$0	\$64,000	\$0	\$80,000
SP1204	\$0	\$0	\$0	\$0	\$0	\$0	\$0	\$0	\$400	\$0	\$1,600	\$0	\$2,000
SP1321	\$10,000	\$0	\$0	\$0	\$0	\$0	\$0	\$3,984	\$0	\$0	\$0	\$0	\$13,984
SP1323	\$681,000	\$0	\$0	\$0	\$0	\$0	\$0	\$172,000	\$156,600	\$0	\$626,400	\$0	\$1,636,000
SP1401	\$0	\$0	\$0	\$0	\$0	\$0	\$0	\$0	\$5,200	\$0	\$20,800	\$0	\$26,000
SP1405	\$0	\$0	\$0	\$0	\$0	\$0	\$0	\$0	\$400	\$0	\$1,600	\$0	\$2,000
SP1409	\$0	\$0	\$0	\$0	\$0	\$0	\$0	\$0	\$996,400	\$0	\$8,967,600	\$0	\$9,964,000
SP1410	\$0	\$0	\$0	\$0	\$0	\$0	\$0	\$0	\$1,833,000	\$0	\$7,332,000	\$0	\$9,165,000
SP1415	\$734,000	\$0	\$0	\$0	\$0	\$0	\$0	\$184,000	\$74,000	\$0	\$298,000	\$0	\$1,290,000
WI1301	\$0	\$0	\$0	\$0	\$0	\$0	\$0	\$0	\$10,000	\$0	\$40,000	\$0	\$50,000
SUBTOTAL	\$4,216,001	\$1,032,800	\$4,651,200	\$0	\$128,000	\$0	\$320,000	\$1,137,734	\$5,236,800	\$32,000	\$19,695,200	\$0	\$36,449,735

FINANCIAL SUMMARY

Roadways

YEARLY SUMMARY

PROJECT	Federal							Local	State			Other	TOTAL
	FHWA (STP-U)	FHWA (SAFETY)	FHWA (BRIDGE)	FHWA (STP)	FHWA (130)	FHWA (HPP)	FHWA (BRO)	LOCAL	MoDOT	MoDOT-GCSA	MoDOT-AC	OTHER	
FY 2017													
CC0901	\$0	\$0	\$0	\$0	\$0	\$0	\$0	\$0	\$400	\$0	\$1,600	\$0	\$2,000
CC1102	\$0	\$0	\$0	\$0	\$0	\$0	\$0	\$0	\$400	\$0	\$1,600	\$0	\$2,000
GR1403	\$0	\$0	\$0	\$0	\$0	\$0	\$0	\$0	\$400	\$0	\$1,600	\$0	\$2,000
MO1105	\$0	\$0	\$0	\$0	\$0	\$0	\$0	\$0	\$284,000	\$0	\$0	\$0	\$284,000
MO1201	\$0	\$80,100	\$0	\$0	\$0	\$0	\$0	\$0	\$8,900	\$0	\$0	\$0	\$89,000
MO1404	\$0	\$0	\$0	\$0	\$0	\$0	\$0	\$0	\$1,115,800	\$0	\$4,463,200	\$0	\$5,579,000
MO1701	\$292,000	\$0	\$0	\$0	\$0	\$0	\$0	\$73,000	\$134,600	\$0	\$538,400	\$0	\$1,038,000
MO1705	\$0	\$0	\$0	\$0	\$0	\$0	\$0	\$0	\$40,000	\$0	\$160,000	\$0	\$200,000
OK1401	\$0	\$0	\$0	\$0	\$0	\$0	\$0	\$0	\$400	\$0	\$1,600	\$0	\$2,000
RG0901	\$0	\$0	\$0	\$0	\$0	\$0	\$0	\$0	\$400	\$0	\$1,600	\$0	\$2,000
RG1201	\$0	\$0	\$0	\$0	\$0	\$0	\$0	\$0	\$67,600	\$0	\$270,400	\$0	\$338,000
SP1106	\$0	\$0	\$0	\$0	\$0	\$0	\$0	\$0	\$400	\$0	\$1,600	\$0	\$2,000
SP1112	\$0	\$0	\$0	\$0	\$0	\$0	\$0	\$0	\$30,000	\$0	\$120,000	\$0	\$150,000
SP1204	\$0	\$0	\$0	\$0	\$0	\$0	\$0	\$0	\$205,200	\$0	\$820,800	\$0	\$1,026,000
SP1401	\$0	\$0	\$0	\$0	\$0	\$0	\$0	\$0	\$91,600	\$0	\$366,400	\$0	\$458,000
SP1405	\$0	\$0	\$0	\$0	\$0	\$0	\$0	\$0	\$400	\$0	\$1,600	\$0	\$2,000
SP1415	\$1,089,292	\$0	\$0	\$0	\$0	\$0	\$0	\$271,823	\$326,777	\$0	\$1,305,108	\$0	\$2,993,000
WI1301	\$0	\$0	\$0	\$0	\$0	\$0	\$0	\$0	\$164,800	\$0	\$659,200	\$0	\$824,000
SUBTOTAL	\$1,381,292	\$80,100	\$0	\$0	\$0	\$0	\$0	\$344,823	\$2,472,077	\$0	\$8,714,708	\$0	\$12,993,000
FY 2018													
CC0901	\$0	\$0	\$0	\$0	\$0	\$0	\$0	\$0	\$400	\$0	\$1,600	\$0	\$2,000
CC1102	\$0	\$0	\$0	\$0	\$0	\$0	\$0	\$0	\$400	\$0	\$1,600	\$0	\$2,000
GR1403	\$0	\$0	\$0	\$0	\$0	\$0	\$0	\$0	\$400	\$0	\$1,600	\$0	\$2,000
MO1105	\$0	\$0	\$0	\$0	\$0	\$0	\$0	\$0	\$284,000	\$0	\$0	\$0	\$284,000
MO1801	\$300,000	\$0	\$0	\$0	\$0	\$0	\$0	\$75,000	\$134,600	\$0	\$538,400	\$0	\$1,048,000
OK1401	\$0	\$0	\$0	\$0	\$0	\$0	\$0	\$0	\$400	\$0	\$1,600	\$0	\$2,000
RG0901	\$0	\$0	\$0	\$0	\$0	\$0	\$0	\$0	\$400	\$0	\$1,600	\$0	\$2,000
SP1106	\$0	\$0	\$0	\$100,000	\$0	\$0	\$0	\$1,179,000	\$313,000	\$0	\$1,252,000	\$0	\$2,844,000
SP1112	\$0	\$0	\$0	\$0	\$0	\$166,134	\$0	\$0	\$792,000	\$0	\$3,001,866	\$0	\$3,960,000
SP1405	\$0	\$0	\$0	\$0	\$0	\$0	\$0	\$0	\$400	\$0	\$1,600	\$0	\$2,000
SUBTOTAL	\$300,000	\$0	\$0	\$100,000	\$0	\$166,134	\$0	\$1,254,000	\$1,526,000	\$0	\$4,801,866	\$0	\$8,148,000
GRAND TOTAL	\$13,005,905	\$2,113,500	\$4,899,200	\$768,715	\$3,751,967	\$166,134	\$1,824,800	\$6,628,152	\$15,701,177	\$1,911,968	\$58,661,030	\$469,065	\$109,901,613

FINANCIAL CONSTRAINT

Roadways

	Federal Funding Source							TOTAL Federal Funds	Local	MoDOT Programmed Funds	Other	State Operations and Maintenance	TOTAL
	STP-U	Safety	Bridge	STP	130	HPP	BRO						
2015 Funds Programmed	\$7,108,612	\$1,000,600	\$248,000	\$668,715	\$3,623,967	\$0	\$1,504,800	\$14,154,694	\$3,891,595	\$33,795,524	\$469,065	\$6,525,006	\$58,835,884
2016 Funds Programmed	\$4,216,001	\$1,032,800	\$4,651,200	\$0	\$128,000	\$0	\$320,000	\$10,348,001	\$1,137,734	\$24,964,000	\$0	\$665,506	\$37,115,241
2017 Funds Programmed	\$1,381,292	\$80,100	\$0	\$0	\$0	\$0	\$0	\$1,461,392	\$344,823	\$11,186,785	\$0	\$6,788,616	\$19,781,616
2018 Funds Programmed	\$300,000	\$0	\$0	\$100,000	\$0	\$166,134	\$0	\$566,134	\$1,254,000	\$6,327,866	\$0	\$6,924,388	\$15,072,388
Total	\$ 13,005,905	\$ 2,113,500	\$ 4,899,200	\$ 768,715	\$ 3,751,967	\$ 166,134	\$ 1,824,800	\$ 26,530,221	\$ 6,628,152	\$ 76,274,175	\$ 469,065	\$ 20,903,516	\$130,805,129

	Prior Year	FY 2015	FY 2016	FY 2017	FY 2018	TOTAL
Available State and Federal Funding	\$24,201,377	\$27,240,000	\$25,680,000	\$8,750,000	\$8,090,000	\$93,961,377
Available Operations and Maintenance Funding	\$ -	\$6,525,006	\$665,506	\$6,788,616	\$6,924,388	\$20,903,516
Available Suballocated STP-U/Small Urban	\$23,213,240	\$5,410,663	\$5,414,570	\$4,599,063	\$4,599,063	\$43,236,599
Available Suballocated BRM	\$1,542,036	\$338,170	\$338,170	\$338,170	\$338,170	\$2,894,716
TOTAL AVAILABLE FUNDING	\$48,956,653	\$39,513,839	\$32,098,246	\$20,475,849	\$19,951,621	\$160,996,208
Prior Year Funding	\$ -	\$48,956,653	\$33,995,268	\$30,116,007	\$31,155,063	-
Programmed State and Federal Funding	\$ -	(\$54,475,224)	(\$35,977,507)	(\$19,436,793)	(\$13,818,388)	(\$123,707,912)
TOTAL REMAINING	\$48,956,653	\$33,995,268	\$30,116,007	\$31,155,063	\$37,288,296	\$37,288,296

Remaining State and Federal Funding	\$4,162,886
Remaining Suballocated STP-Urban/Small Urban	\$30,230,694
Remaining Suballocated BRM	\$2,894,716
TOTAL REMAINING	\$37,288,296