



OZARKS TRANSPORTATION ORGANIZATION
A METROPOLITAN PLANNING ORGANIZATION

205 PARK CENTRAL EAST, SUITE 205 SPRINGFIELD, MO 65806 417-865-3042 [p] 417-862-6013 [f]

11 May 2015

Ms. Eva Voss
Transportation Planning
Missouri Department of Transportation
P. O. Box 270
Jefferson City, Missouri 65102

Dear Ms. Voss:

I am writing to advise you that the Ozarks Transportation Organization approved Administrative Modification Number Five to the OTO FY 2015-2018 Transportation Improvement Program (TIP) on May 11, 2015. The adoption included demonstration of fiscal constraint as required by federal regulations. Please find enclosed the administrative modification, which is detailed on the following page.

Please let me know if you have any questions or need any other information.

Sincerely,

A handwritten signature in black ink that reads "Natasha Longpine". The signature is written in a cursive, flowing style.

Natasha L. Longpine, AICP
Principal Planner



Administrative Modification Number Five to the FY 2015-2018 Transportation Improvement Program

Ozarks Transportation Organization (Springfield, MO Area MPO)

AGENDA DESCRIPTION:

There are ten items included as part of Administrative Modification Five to the FY 2015-2018 Transportation Improvement Program.

1) *Jackson and Main Street Sidewalks (EN1401)*

- Adding or deleting a project development phase of a project without major changes to the scope of the project

Funding was moved from construction into engineering, adding that phase of the project.

2) *Annual On-Call Work Zone Enforcement (MO1601)*

- Changes in project's programmed amount less than 15% (up to \$2,000,000)
- Minor changes to funding sources between federal categories or between state and local sources

Funding was reduced in both state and federal funding categories, also reducing the overall cost of the project.

3) *ITS Operations and Management (MO1603)*

- Changes in project's programmed amount less than 15% (up to \$2,000,000)

Funding was added to support additional salary needs for the City of Springfield.

4) *Annual Guardrail and Guard Cable Repair Program (MO1605)*

- Changes in project's programmed amount less than 15% (up to \$2,000,000)

Funding was reduced in FY 2016 by \$4,000 MoDOT-AC and \$1,000 MoDOT.

5) *ITS Operations and Management (MO1701)*

- Changes in project's programmed amount less than 15% (up to \$2,000,000)

Funding was added to support additional salary needs for the City of Springfield.

6) *ITS Operations and Management (MO1801)*

- Changes in project's programmed amount less than 15% (up to \$2,000,000)

Funding was added to support additional salary needs for the City of Springfield.

7) *Route 160 and Route 14 Intersection Improvements (NX0906)*

- Changes in project's programmed amount less than 15% (up to \$2,000,000)

Funding was reduced in the MoDOT-AC and MoDOT funding types in FY 2016.

8) *Scoping for Interchange at Route 60 and Route 125 (RG0901)*

- Change to years shown under Anticipated Year of Conversion

9) *Route 65 – Lake Springfield Bridge (SP1018)*

- Changes in project's programmed amount less than 15% (up to \$2,000,000)

Funding was increased for Engineering in FY 2016 and decreased for Construction in FY 2016, for a net change of \$94,000.

10) *Scoping for James River Freeway Capacity Improvements (SP1405)*

- Change to years shown under Anticipated Year of Conversion



D) Bicycle & Pedestrian Section

TIP # EN1401 JACKSON AND MAIN STREET SIDEWALKS
Route BUSINESS 160
From MAIN ST
To EAST END OF BUSINESS DISTRICT
Location/Agency City of Willard
Federal Agency FHWA
Responsible Agency City of Willard
Federal Funding Category STP-U
MoDOT Funding Category
AC Year of Conv.
STIP #



Project Description

Sidewalk replacement along Jackson St. and Main St.

Fund Code	Source	Phase	FY2015	FY2016	FY2017	FY2018	Total
FHWA (STP-U)	Federal	CON	\$48,300	\$0	\$0	\$0	\$48,300
LOCAL	Local	CON	\$12,075	\$0	\$0	\$0	\$12,075
Totals			\$60,375	\$0	\$0	\$0	\$60,375

ORIGINAL

Notes

Prior Cost \$0
Future Cost \$0
Total Cost \$60,375



D) Bicycle & Pedestrian Section

TIP # EN1401 JACKSON AND MAIN STREET SIDEWALKS
Route BUSINESS 160
From MAIN ST
To EAST END OF BUSINESS DISTRICT
Location/Agency City of Willard
Federal Agency FHWA
Responsible Agency City of Willard
Federal Funding Category STP-U
MoDOT Funding Category
AC Year of Conv.
STIP #



Project Description

Sidewalk replacement along Jackson St. and Main St.

Fund Code	Source	Phase	FY2015	FY2016	FY2017	FY2018	Total
FHWA (STP-U)	Federal	ENG	\$16,926	\$0	\$0	\$0	\$16,926
LOCAL	Local	ENG	\$4,231	\$0	\$0	\$0	\$4,231
FHWA (STP-U)	Federal	CON	\$31,074	\$0	\$0	\$0	\$31,074
LOCAL	Local	CON	\$7,769	\$0	\$0	\$0	\$7,769
Totals			\$60,000	\$0	\$0	\$0	\$60,000

Notes

Prior Cost	\$0
Future Cost	\$0
Total Cost	\$60,000



E) Roadways Section

TIP # MO1601 ANNUAL ON-CALL WORK ZONE ENFORCEMENT

Route Various

From Various

To Various

Location/Agency Area Wide

Federal Agency FHWA

Responsible Agency MoDOT

Federal Funding Category Safety

MoDOT Funding Category Safety

AC Year of Conv.

STIP # 8P2377



Project Description

On-call work zone enforcement in the OTO area.

Fund Code	Source	Phase	FY2015	FY2016	FY2017	FY2018	Total
MoDOT	State	ENG	\$2,000	\$3,000	\$0	\$0	\$5,000
FHWA	Federal	PMT	\$0	\$50,000	\$0	\$0	\$50,000
Totals			\$2,000	\$53,000	\$0	\$0	\$55,000

Notes

Source of State Funds: State transportation revenues.

Prior Cost	\$0
Future Cost	\$0
Total Cost	\$55,000



E) Roadways Section

TIP # MO1601 ANNUAL ON-CALL WORK ZONE ENFORCEMENT

Route Various

From Various

To Various

Location/Agency Area Wide

Federal Agency FHWA

Responsible Agency MoDOT

Federal Funding Category Safety

MoDOT Funding Category Safety

AC Year of Conv.

STIP # 8P2377



Project Description

On-call work zone enforcement in the OTO area.

Fund Code	Source	Phase	FY2015	FY2016	FY2017	FY2018	Total
FHWA	Federal	ENG	\$0	\$900	\$0	\$0	\$900
MoDOT	State	ENG	\$2,000	\$100	\$0	\$0	\$2,100
FHWA	Federal	PMT	\$0	\$46,000	\$0	\$0	\$46,000
MoDOT	State	CON	\$0	\$4,000	\$0	\$0	\$4,000
Totals			\$2,000	\$51,000	\$0	\$0	\$53,000

Notes

Source of State Funds: State transportation revenues.

Prior Cost	\$0
Future Cost	\$0
Total Cost	\$53,000



E) Roadways Section

TIP # MO1603 ITS OPERATIONS AND MANAGEMENT
Route N/A
From N/A
To N/A
Location/Agency Area Wide
Federal Agency FHWA
Responsible Agency City of Springfield
Federal Funding Category STP, STP-Urban
MoDOT Funding Category Major Projects and Emerging Needs
AC Year of Conv. FY 2017
STIP # 8Q3000



Project Description

Operations and management of OzarksTraffic Intelligent Transportation System in OTO area.

Fund Code	Source	Phase	FY2015	FY2016	FY2017	FY2018	Total
FHWA (STP-U)	Federal	PMT	\$0	\$284,000	\$0	\$0	\$284,000
LOCAL	Local	PMT	\$0	\$71,000	\$0	\$0	\$71,000
MoDOT	State	PMT	\$0	\$134,600	\$0	\$0	\$134,600
MoDOT-AC	State	PMT	\$0	\$538,400	\$0	\$0	\$538,400
Totals			\$0	\$1,028,000	\$0	\$0	\$1,028,000

Notes

Source of State Funds: State transportation revenues. Source of Local Funds: City of Springfield 1/8-cent transportation sales tax.

Prior Cost	\$0
Future Cost	\$0
Total Cost	\$1,028,000



E) Roadways Section

TIP # MO1603 ITS OPERATIONS AND MANAGEMENT
Route N/A
From N/A
To N/A
Location/Agency Area Wide
Federal Agency FHWA
Responsible Agency City of Springfield
Federal Funding Category STP, STP-Urban
MoDOT Funding Category Major Projects and Emerging Needs
AC Year of Conv. FY 2017
STIP # 8Q3000



Project Description

Operations and management of OzarksTraffic Intelligent Transportation System in OTO area.

Fund Code	Source	Phase	FY2015	FY2016	FY2017	FY2018	Total
FHWA (STP-U)	Federal	PMT	\$0	\$300,000	\$0	\$0	\$300,000
LOCAL	Local	PMT	\$0	\$75,000	\$0	\$0	\$75,000
MoDOT	State	PMT	\$0	\$134,600	\$0	\$0	\$134,600
MoDOT-AC	State	PMT	\$0	\$538,400	\$0	\$0	\$538,400
Totals			\$0	\$1,048,000	\$0	\$0	\$1,048,000

Notes

Source of State Funds: State transportation revenues. Source of Local Funds: City of Springfield 1/8-cent transportation sales tax.

	Prior Cost	\$0
	Future Cost	\$0
	Total Cost	\$1,048,000



E) Roadways Section

TIP # MO1605 ANNUAL GUARDRAIL AND GUARD CABLE REPAIR PROGRAM

Route Various

From Various

To Various

Location/Agency Area Wide

Federal Agency FHWA

Responsible Agency MoDOT

Federal Funding Category STP

MoDOT Funding Category Taking Care of the System

AC Year of Conv. FY 2017, FY 2018

STIP # 8P2245



Project Description

Job order contracting for guardrail and guard cable repair in OTO area.

Fund Code	Source	Phase	FY2015	FY2016	FY2017	FY2018	Total
MoDOT	State	ENG	\$400	\$2,800	\$0	\$0	\$3,200
MoDOT-AC	State	ENG	\$1,600	\$11,200	\$0	\$0	\$12,800
MoDOT	State	CON	\$0	\$36,000	\$0	\$0	\$36,000
MoDOT-AC	State	CON	\$0	\$144,000	\$0	\$0	\$144,000
Totals			\$2,000	\$194,000	\$0	\$0	\$196,000

Notes

Source of State Funds: State transportation revenues. Split from project MO1150.

Prior Cost	\$4,000
Future Cost	\$0
Total Cost	\$200,000



E) Roadways Section

TIP # MO1605 ANNUAL GUARDRAIL AND GUARD CABLE REPAIR PROGRAM

Route Various

From Various

To Various

Location/Agency Area Wide

Federal Agency FHWA

Responsible Agency MoDOT

Federal Funding Category STP

MoDOT Funding Category Taking Care of the System

AC Year of Conv. FY 2017, FY 2018

STIP # 8P2245



Project Description

Job order contracting for guardrail and guard cable repair in OTO area.

Fund Code	Source	Phase	FY2015	FY2016	FY2017	FY2018	Total
MoDOT	State	ENG	\$400	\$2,800	\$0	\$0	\$3,200
MoDOT-AC	State	ENG	\$1,600	\$11,200	\$0	\$0	\$12,800
MoDOT	State	CON	\$0	\$35,000	\$0	\$0	\$35,000
MoDOT-AC	State	CON	\$0	\$140,000	\$0	\$0	\$140,000
Totals			\$2,000	\$189,000	\$0	\$0	\$191,000

Notes

Source of State Funds: State transportation revenues. Split from project MO1150.

Prior Cost	\$4,000
Future Cost	\$0
Total Cost	\$195,000



E) Roadways Section

TIP # MO1701 ITS OPERATIONS AND MANAGEMENT
Route N/A
From N/A
To N/A
Location/Agency Area Wide
Federal Agency FHWA
Responsible Agency City of Springfield
Federal Funding Category STP, STP-Urban
MoDOT Funding Category Major Projects and Emerging Needs
AC Year of Conv. FY 2018
STIP # 8Q3001



Project Description

Operations and management of the Ozarks Traffic Intelligent Transportation System in the OTO area.

Fund Code	Source	Phase	FY2015	FY2016	FY2017	FY2018	Total
FHWA (STP-U)	Federal	PMT	\$0	\$0	\$292,000	\$0	\$292,000
LOCAL	Local	PMT	\$0	\$0	\$73,000	\$0	\$73,000
MoDOT	State	PMT	\$0	\$0	\$134,600	\$0	\$134,600
MoDOT-AC	State	PMT	\$0	\$0	\$538,400	\$0	\$538,400
Totals			\$0	\$0	\$1,038,000	\$0	\$1,038,000

Notes

Source of State Funds: State transportation revenues. Source of Local Funds: City of Springfield 1/8-cent transportation sales tax.

Prior Cost	\$0
Future Cost	\$0
Total Cost	\$1,038,000



E) Roadways Section

TIP # MO1701 ITS OPERATIONS AND MANAGEMENT
Route N/A
From N/A
To N/A
Location/Agency Area Wide
Federal Agency FHWA
Responsible Agency City of Springfield
Federal Funding Category STP, STP-Urban
MoDOT Funding Category Major Projects and Emerging Needs
AC Year of Conv. FY 2018
STIP # 8Q3001



Project Description

Operations and management of the Ozarks Traffic Intelligent Transportation System in the OTO area.

Fund Code	Source	Phase	FY2015	FY2016	FY2017	FY2018	Total
FHWA (STP-U)	Federal	PMT	\$0	\$0	\$315,000	\$0	\$315,000
LOCAL	Local	PMT	\$0	\$0	\$78,750	\$0	\$78,750
MoDOT	State	PMT	\$0	\$0	\$134,600	\$0	\$134,600
MoDOT-AC	State	PMT	\$0	\$0	\$538,400	\$0	\$538,400
Totals			\$0	\$0	\$1,066,750	\$0	\$1,066,750

Notes

Source of State Funds: State transportation revenues. Source of Local Funds: City of Springfield 1/8-cent transportation sales tax.

	Prior Cost	\$0
	Future Cost	\$0
	Total Cost	\$1,066,750



E) Roadways Section

TIP # MO1801 ITS OPERATIONS AND MANAGEMENT
Route N/A
From N/A
To N/A
Location/Agency Area Wide
Federal Agency FHWA
Responsible Agency City of Springfield
Federal Funding Category STP-U
MoDOT Funding Category Major Projects and Emerging Needs
AC Year of Conv. FY 2018
STIP # 8Q3001



Project Description

Operations and management of the Ozarks Traffic Intelligent Transportation System in the OTO area.

Fund Code	Source	Phase	FY2015	FY2016	FY2017	FY2018	Total
FHWA (STP-U)	Federal	PMT	\$0	\$0	\$0	\$300,000	\$300,000
LOCAL	Local	PMT	\$0	\$0	\$0	\$75,000	\$75,000
MoDOT	State	PMT	\$0	\$0	\$0	\$134,600	\$134,600
MoDOT-AC	State	PMT	\$0	\$0	\$0	\$538,400	\$538,400
Totals			\$0	\$0	\$0	\$1,048,000	\$1,048,000

Notes

Source of State Funds: State transportation revenues. Source of Local Funds: City of Springfield 1/8-cent transportation sales tax.

Prior Cost	\$0
Future Cost	\$0
Total Cost	\$1,048,000



E) Roadways Section

TIP # MO1801 ITS OPERATIONS AND MANAGEMENT
Route N/A
From N/A
To N/A
Location/Agency Area Wide
Federal Agency FHWA
Responsible Agency City of Springfield
Federal Funding Category STP-U
MoDOT Funding Category Major Projects and Emerging Needs
AC Year of Conv. FY 2018
STIP # 8Q3001



Project Description

Operations and management of the Ozarks Traffic Intelligent Transportation System in the OTO area.

Fund Code	Source	Phase	FY2015	FY2016	FY2017	FY2018	Total
FHWA (STP-U)	Federal	PMT	\$0	\$0	\$0	\$331,000	\$331,000
LOCAL	Local	PMT	\$0	\$0	\$0	\$82,750	\$82,750
MoDOT	State	PMT	\$0	\$0	\$0	\$134,600	\$134,600
MoDOT-AC	State	PMT	\$0	\$0	\$0	\$538,400	\$538,400
Totals			\$0	\$0	\$0	\$1,086,750	\$1,086,750

Notes

Source of State Funds: State transportation revenues. Source of Local Funds: City of Springfield 1/8-cent transportation sales tax.

Prior Cost	\$0
Future Cost	\$0
Total Cost	\$1,086,750



E) Roadways Section

TIP # NX0906 ROUTE 160 & ROUTE 14 INTERSECTION IMPROVEMENTS

Route Routes 160 and 14

From US 160

To Route 14

Location/Agency City of Nixa

Federal Agency FHWA

Responsible Agency City of Nixa

Federal Funding Category STP

MoDOT Funding Category Major Projects and Emerging Needs

AC Year of Conv. FY 2017, FY 2018

STIP # 8P2219



Project Description

Complete designed intersection improvements at US 160 and Route 14.

Fund Code	Source	Phase	FY2015	FY2016	FY2017	FY2018	Total
MoDOT	State	ENG	\$6,800	\$77,800	\$0	\$0	\$84,600
MoDOT-AC	State	ENG	\$27,200	\$311,200	\$0	\$0	\$338,400
MoDOT	State	ROW	\$4,000	\$0	\$0	\$0	\$4,000
MoDOT-AC	State	ROW	\$16,000	\$0	\$0	\$0	\$16,000
FHWA (STP-U)	Federal	CON	\$0	\$1,307,001	\$0	\$0	\$1,307,001
LOCAL	Local	CON	\$0	\$326,750	\$0	\$0	\$326,750
MoDOT	State	CON	\$0	\$284,200	\$0	\$0	\$284,200
MoDOT-AC	State	CON	\$0	\$1,136,800	\$0	\$0	\$1,136,800
Totals			\$54,000	\$3,443,751	\$0	\$0	\$3,497,751

Notes

Source of MoDOT Funds: State transportation revenues. Source of Local Funds: Nixa General Obligation Bond - paid by Nixa local sales tax. \$1,199,000 MoDOT Cost Share Funds.

Prior Cost	\$24,000
Future Cost	\$0
Total Cost	\$3,521,751



E) Roadways Section

TIP # NX0906 ROUTE 160 & ROUTE 14 INTERSECTION IMPROVEMENTS

Route Routes 160 and 14

From US 160

To Route 14

Location/Agency City of Nixa

Federal Agency FHWA

Responsible Agency City of Nixa

Federal Funding Category STP

MoDOT Funding Category Major Projects and Emerging Needs

AC Year of Conv. FY 2017, FY 2018

STIP # 8P2219



Project Description

Complete designed intersection improvements at US 160 and Route 14.

Fund Code	Source	Phase	FY2015	FY2016	FY2017	FY2018	Total
MoDOT	State	ENG	\$6,800	\$77,800	\$0	\$0	\$84,600
MoDOT-AC	State	ENG	\$27,200	\$311,200	\$0	\$0	\$338,400
MoDOT	State	ROW	\$4,000	\$0	\$0	\$0	\$4,000
MoDOT-AC	State	ROW	\$16,000	\$0	\$0	\$0	\$16,000
FHWA (STP-U)	Federal	CON	\$0	\$1,307,001	\$0	\$0	\$1,307,001
LOCAL	Local	CON	\$0	\$326,750	\$0	\$0	\$326,750
MoDOT	State	CON	\$0	\$266,400	\$0	\$0	\$266,400
MoDOT-AC	State	CON	\$0	\$1,065,600	\$0	\$0	\$1,065,600
Totals			\$54,000	\$3,354,751	\$0	\$0	\$3,408,751

Notes

Source of MoDOT Funds: State transportation revenues. Source of Local Funds: Nixa General Obligation Bond - paid by Nixa local sales tax. \$1,199,514 MoDOT Cost Share Funds.

Prior Cost	\$24,000
Future Cost	\$0
Total Cost	\$3,432,751



E) Roadways Section

TIP # RG0901 **SCOPING FOR INTERCHANGE AT ROUTE 60 & ROUTE 125**

Route US 60 and Route 125

From Farm Road 213

To Farm Road 247

Location/Agency City of Rogersville

Federal Agency FHWA

Responsible Agency MoDOT

Federal Funding Category NHPP(NHS)

MoDOT Funding Category Major Projects and Emerging Needs

AC Year of Conv. FY 2015, FY 2016, FY 2017, FY

STIP # 8P0683E



Project Description

Scoping for interchange improvements at Rte. 125 and outer roads from Farm Road 213 to Farm Road 247.

Fund Code	Source	Phase	FY2015	FY2016	FY2017	FY2018	Total
MoDOT	State	ENG	\$400	\$400	\$400	\$400	\$1,600
MoDOT-AC	State	ENG	\$1,600	\$1,600	\$1,600	\$1,600	\$6,400
Totals			\$2,000	\$2,000	\$2,000	\$2,000	\$8,000

Notes

Source of State Funds: State transportation revenues.

Prior Cost	\$294,000
Future Cost	\$0
Total Cost	\$302,000



E) Roadways Section

TIP # RG0901 **SCOPING FOR INTERCHANGE AT ROUTE 60 & ROUTE 125**

Route US 60 and Route 125

From Farm Road 213

To Farm Road 247

Location/Agency City of Rogersville

Federal Agency FHWA

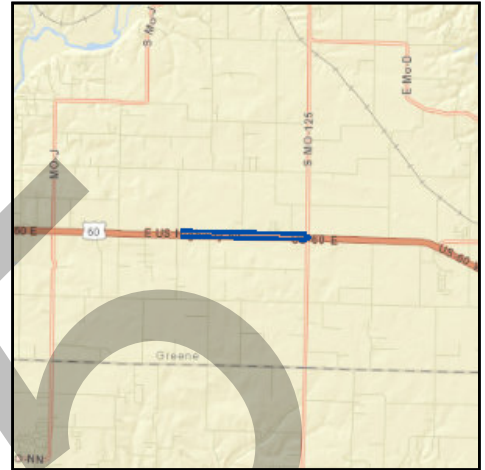
Responsible Agency MoDOT

Federal Funding Category NHPP(NHS)

MoDOT Funding Category Major Projects and Emerging Needs

AC Year of Conv. FY 2017, FY 2018, FY 2019

STIP # 8P0683E



Project Description

Scoping for interchange improvements at Rte. 125 and outer roads from Farm Road 213 to Farm Road 247.

Fund Code	Source	Phase	FY2015	FY2016	FY2017	FY2018	Total
MoDOT	State	ENG	\$400	\$400	\$400	\$400	\$1,600
MoDOT-AC	State	ENG	\$1,600	\$1,600	\$1,600	\$1,600	\$6,400
Totals			\$2,000	\$2,000	\$2,000	\$2,000	\$8,000

Notes

Source of State Funds: State transportation revenues.

Prior Cost	\$294,000
Future Cost	\$0
Total Cost	\$302,000



E) Roadways Section

TIP # SP1018 **ROUTE 65 - LAKE SPRINGFIELD BRIDGE**

Route US 65
From 0.6 mile south of Route 60
To Lake Springfield
Location/Agency City of Springfield
Federal Agency FHWA
Responsible Agency MoDOT
Federal Funding Category NHPP(Bridge)
MoDOT Funding Category Taking Care of the System
AC Year of Conv.
STIP # 8P2158



Project Description

Bridge improvements on northbound bridge over Lake Springfield, 0.6 miles south of Route 60.

Fund Code	Source	Phase	FY2015	FY2016	FY2017	FY2018	Total
FHWA	Federal	ENG	\$248,000	\$440,800	\$0	\$0	\$688,800
MoDOT	State	ENG	\$62,000	\$110,200	\$0	\$0	\$172,200
FHWA	Federal	CON	\$0	\$4,210,400	\$0	\$0	\$4,210,400
MoDOT	State	CON	\$0	\$1,052,600	\$0	\$0	\$1,052,600
Totals			\$310,000	\$5,814,000	\$0	\$0	\$6,124,000

Notes

Source of State Funds: State transportation revenues.

Prior Cost	\$628,000
Future Cost	\$0
Total Cost	\$6,752,000



E) Roadways Section

TIP # SP1018 **ROUTE 65 - LAKE SPRINGFIELD BRIDGE**

Route US 65
From 0.6 mile south of Route 60
To Lake Springfield
Location/Agency City of Springfield
Federal Agency FHWA
Responsible Agency MoDOT
Federal Funding Category NHPP(Bridge)
MoDOT Funding Category Taking Care of the System
AC Year of Conv.
STIP # 8P2158



Project Description

Bridge improvements on northbound bridge over Lake Springfield, 0.6 miles south of Route 60.

Fund Code	Source	Phase	FY2015	FY2016	FY2017	FY2018	Total
FHWA	Federal	ENG	\$248,000	\$578,400	\$0	\$0	\$826,400
MoDOT	State	ENG	\$62,000	\$144,600	\$0	\$0	\$206,600
FHWA	Federal	CON	\$0	\$4,148,000	\$0	\$0	\$4,148,000
MoDOT	State	CON	\$0	\$1,037,000	\$0	\$0	\$1,037,000
Totals			\$310,000	\$5,908,000	\$0	\$0	\$6,218,000

Notes

Source of State Funds: State transportation revenues.

Prior Cost	\$628,000
Future Cost	\$0
Total Cost	\$6,846,000



E) Roadways Section

TIP # SP1405 **SCOPING FOR JAMES RIVER FREEWAY CAPACITY IMPROVEMENTS**

Route US 60

From Rte. 13

To Rte. 65

Location/Agency City of Springfield

Federal Agency FHWA

Responsible Agency MoDOT

Federal Funding Category NHPP(NHS)

MoDOT Funding Category Major Projects and Emerging Needs

AC Year of Conv. FY 2015, FY 2016, FY 2017, FY

STIP # 8P3032



Project Description

Scoping for capacity improvements on James River Freeway from Rte. 13 (Kansas Expressway) to Rte. 65.

Fund Code	Source	Phase	FY2015	FY2016	FY2017	FY2018	Total
MoDOT	State	ENG	\$400	\$400	\$400	\$400	\$1,600
MoDOT-AC	State	ENG	\$1,600	\$1,600	\$1,600	\$1,600	\$6,400
Totals			\$2,000	\$2,000	\$2,000	\$2,000	\$8,000

ORIGINAL

Notes

Source of State Funds: MoDOT operating budget.

Prior Cost	\$2,000
Future Cost	\$0
Total Cost	\$10,000



E) Roadways Section

TIP # SP1405 SCOPING FOR JAMES RIVER FREEWAY CAPACITY IMPROVEMENTS

Route US 60

From Rte. 13

To Rte. 65

Location/Agency City of Springfield

Federal Agency FHWA

Responsible Agency MoDOT

Federal Funding Category NHPP(NHS)

MoDOT Funding Category Major Projects and Emerging Needs

AC Year of Conv. FY 2017, FY 2018, FY 2019

STIP # 8P3032



Project Description

Scoping for capacity improvements on James River Freeway from Rte. 13 (Kansas Expressway) to Rte. 65.

Fund Code	Source	Phase	FY2015	FY2016	FY2017	FY2018	Total
MoDOT	State	ENG	\$400	\$400	\$400	\$400	\$1,600
MoDOT-AC	State	ENG	\$1,600	\$1,600	\$1,600	\$1,600	\$6,400
Totals			\$2,000	\$2,000	\$2,000	\$2,000	\$8,000

Notes

Source of State Funds: MoDOT operating budget.

Prior Cost	\$2,000
Future Cost	\$0
Total Cost	\$10,000

FINANCIAL SUMMARY

Bicycle & Pedestrian

YEARLY SUMMARY

PROJECT	FHWA (STP)	FHWA (STP-U)	FHWA (TE)	FHWA (TAP)	Local	State		TOTAL
					LOCAL	MoDOT	MoDOT-AC	
FY 2015								
EN1302	\$0	\$0	\$0	\$240,000	\$60,000	\$0	\$0	\$300,000
EN1305	\$0	\$0	\$220,413	\$0	\$179,587	\$0	\$0	\$400,000
EN1306	\$0	\$0	\$320,000	\$0	\$80,000	\$0	\$0	\$400,000
EN1307	\$0	\$0	\$200,000	\$0	\$50,000	\$0	\$0	\$250,000
EN1401	\$0	\$48,000	\$0	\$0	\$12,000	\$0	\$0	\$60,000
EN1502	\$0	\$0	\$0	\$0	\$0	\$194,800	\$779,200	\$974,000
EN1503	\$0	\$0	\$0	\$122,966	\$30,742	\$0	\$0	\$153,708
EN1504	\$0	\$0	\$0	\$141,635	\$35,409	\$0	\$0	\$177,044
EN1505	\$0	\$0	\$0	\$40,034	\$10,009	\$0	\$0	\$50,043
EN1506	\$0	\$0	\$0	\$250,000	\$141,176	\$0	\$0	\$391,176
EN1507	\$0	\$0	\$0	\$192,680	\$48,170	\$0	\$0	\$240,850
EN1508	\$0	\$0	\$0	\$250,000	\$179,000	\$0	\$0	\$429,000
EN1509	\$0	\$0	\$0	\$250,000	\$280,000	\$0	\$0	\$530,000
EN1510	\$0	\$0	\$0	\$250,000	\$62,500	\$0	\$0	\$312,500
EN1511	\$0	\$0	\$0	\$160,000	\$40,000	\$0	\$0	\$200,000
EN1512	\$0	\$0	\$0	\$133,080	\$33,270	\$0	\$0	\$166,350
MO1309	\$0	\$0	\$0	\$0	\$0	\$5,000	\$20,000	\$25,000
SP1412	\$0	\$0	\$0	\$0	\$0	\$118,600	\$474,400	\$593,000
SP1414	\$69,000	\$0	\$175,000	\$0	\$30,000	\$31,000	\$0	\$305,000
SUBTOTAL	\$69,000	\$48,000	\$915,413	\$2,030,395	\$1,271,863	\$349,400	\$1,273,600	\$5,957,671
FY 2016								
EN1601	\$0	\$0	\$192,000	\$0	\$0	\$48,000	\$0	\$240,000
MO1309	\$0	\$0	\$0	\$0	\$0	\$5,000	\$20,000	\$25,000
SUBTOTAL	\$0	\$0	\$192,000	\$0	\$0	\$53,000	\$20,000	\$265,000
FY 2017								
MO1309	\$0	\$0	\$0	\$0	\$0	\$5,000	\$20,000	\$25,000
SUBTOTAL	\$0	\$0	\$0	\$0	\$0	\$5,000	\$20,000	\$25,000
FY 2018								
MO1309	\$0	\$0	\$0	\$0	\$0	\$5,000	\$20,000	\$25,000
SUBTOTAL	\$0	\$0	\$0	\$0	\$0	\$5,000	\$20,000	\$25,000
GRAND TOTAL	\$69,000	\$48,000	\$1,107,413	\$2,030,395	\$1,271,863	\$412,400	\$1,333,600	\$6,272,671

FINANCIAL CONSTRAINT

Bicycle & Pedestrian

	STP	STP-U	TE	TAP	Local	MoDOT	MoDOT-AC	TOTAL
PRIOR YEAR								
Balance	\$ -	\$ -	\$ -	\$837,863	\$ -	\$ -	\$ -	\$837,863
FY 2015								
Funds Anticipated	\$69,000	\$48,000	\$915,413	\$1,199,376	\$1,271,863	\$349,400	\$1,273,600	\$5,126,652
Funds Programmed	(\$69,000.00)	(\$48,000.00)	(\$915,413.00)	(\$2,030,395.00)	(\$1,271,863.00)	(\$349,400.00)	(\$1,273,600.00)	(\$5,957,671.00)
Running Balance	\$0		\$0	\$6,844	\$0	\$0	\$0	\$6,844
FY 2016								
Funds Anticipated	\$ -		\$192,000	\$0	\$ -	\$53,000	\$20,000	\$265,000
Funds Programmed	\$ -		(\$192,000.00)	\$ -	\$ -	(\$53,000.00)	(\$20,000.00)	(\$265,000.00)
Running Balance	\$0		\$0	\$6,844	\$0	\$0	\$0	\$6,844
FY 2017								
Funds Anticipated	\$ -		\$ -	\$612,826	\$ -	\$5,000	\$20,000	\$637,826
Funds Programmed	\$ -		\$ -	\$ -	\$ -	(\$5,000.00)	(\$20,000.00)	(\$25,000.00)
Running Balance	\$0		\$0	\$619,670	\$0	\$0	\$0	\$619,670
FY 2018								
Funds Anticipated	\$ -		\$ -	\$612,826	\$ -	\$5,000	\$20,000	\$637,826
Funds Programmed	\$ -		\$ -	\$ -	\$ -	(\$5,000.00)	(\$20,000.00)	(\$25,000.00)
Running Balance	\$0		\$0	\$1,232,496	\$0	\$0	\$0	\$1,232,496

FINANCIAL SUMMARY

Roadways

YEARLY SUMMARY

PROJECT	Federal							Local	State			Other	TOTAL
	FHWA (STP-U)	FHWA (SAFETY)	FHWA (BRIDGE)	FHWA (STP)	FHWA (130)	FHWA (HPP)	FHWA (BRO)	LOCAL	MoDOT	MoDOT-GCSA	MoDOT-AC	OTHER	
FY 2015													
BA1101	\$8,000	\$0	\$0	\$0	\$0	\$0	\$0	\$2,000	\$0	\$0	\$0	\$0	\$10,000
CC0901	\$0	\$0	\$0	\$0	\$0	\$0	\$0	\$0	\$400	\$0	\$1,600	\$0	\$2,000
CC1102	\$0	\$0	\$0	\$0	\$0	\$0	\$0	\$0	\$400	\$0	\$1,600	\$0	\$2,000
CC1110	\$2,072,000	\$0	\$0	\$0	\$0	\$0	\$0	\$1,557,044	\$97,600	\$0	\$3,893,356	\$0	\$7,620,000
GR1010	\$0	\$911,000	\$0	\$0	\$0	\$0	\$0	\$0	\$2,369,000	\$0	\$9,071,000	\$0	\$12,351,000
GR1104	\$0	\$0	\$0	\$0	\$160,000	\$0	\$0	\$0	\$0	\$40,000	\$0	\$0	\$200,000
GR1213	\$0	\$0	\$0	\$0	\$0	\$0	\$1,133,600	\$283,400	\$0	\$0	\$0	\$0	\$1,417,000
GR1312	\$0	\$0	\$0	\$0	\$0	\$0	\$371,200	\$92,800	\$0	\$0	\$0	\$0	\$464,000
GR1402	\$0	\$0	\$0	\$168,800	\$1,049,967	\$0	\$0	\$0	\$105,200	\$1,048,968	\$0	\$126,065	\$2,499,000
GR1403	\$0	\$0	\$0	\$0	\$0	\$0	\$0	\$0	\$400	\$0	\$1,600	\$0	\$2,000
GR1408	\$0	\$0	\$0	\$0	\$0	\$0	\$0	\$0	\$400	\$0	\$1,600	\$0	\$2,000
GR1501	\$1,200,000	\$0	\$0	\$0	\$0	\$0	\$0	\$300,000	\$0	\$0	\$0	\$0	\$1,500,000
GR1502	\$960,000	\$0	\$0	\$0	\$0	\$0	\$0	\$240,000	\$0	\$0	\$0	\$0	\$1,200,000
MO1105	\$0	\$0	\$0	\$0	\$0	\$0	\$0	\$0	\$284,000	\$0	\$0	\$0	\$284,000
MO1201	\$0	\$1,800	\$0	\$0	\$0	\$0	\$0	\$0	\$200	\$0	\$0	\$0	\$2,000
MO1404	\$0	\$0	\$0	\$0	\$0	\$0	\$0	\$0	\$400	\$0	\$1,600	\$0	\$2,000
MO1405	\$0	\$0	\$0	\$0	\$0	\$0	\$0	\$0	\$25,000	\$0	\$0	\$0	\$25,000
MO1408	\$0	\$0	\$0	\$0	\$0	\$0	\$0	\$0	\$196,000	\$0	\$784,000	\$0	\$980,000
MO1409	\$0	\$0	\$0	\$0	\$0	\$0	\$0	\$0	\$330,800	\$0	\$1,323,200	\$0	\$1,654,000
MO1501	\$0	\$32,000	\$0	\$0	\$0	\$0	\$0	\$0	\$0	\$0	\$0	\$0	\$32,000
MO1503	\$276,000	\$0	\$0	\$0	\$0	\$0	\$0	\$69,000	\$134,600	\$0	\$538,400	\$0	\$1,018,000
MO1504	\$0	\$0	\$0	\$0	\$0	\$0	\$0	\$0	\$21,600	\$0	\$194,400	\$0	\$216,000
MO1505	\$0	\$0	\$0	\$0	\$0	\$0	\$0	\$0	\$37,800	\$0	\$151,200	\$0	\$189,000
MO1601	\$0	\$0	\$0	\$0	\$0	\$0	\$0	\$0	\$2,000	\$0	\$0	\$0	\$2,000
MO1604	\$0	\$55,800	\$0	\$0	\$0	\$0	\$0	\$0	\$6,200	\$0	\$0	\$0	\$62,000
MO1605	\$0	\$0	\$0	\$0	\$0	\$0	\$0	\$0	\$400	\$0	\$1,600	\$0	\$2,000
MO1705	\$0	\$0	\$0	\$0	\$0	\$0	\$0	\$0	\$400	\$0	\$1,600	\$0	\$2,000
NX0601	\$949,612	\$0	\$0	\$0	\$0	\$0	\$0	\$1,188,388	\$0	\$0	\$0	\$0	\$2,138,000
NX0906	\$0	\$0	\$0	\$0	\$0	\$0	\$0	\$0	\$10,800	\$0	\$43,200	\$0	\$54,000
OK1401	\$0	\$0	\$0	\$0	\$0	\$0	\$0	\$0	\$400	\$0	\$1,600	\$0	\$2,000
RG0901	\$0	\$0	\$0	\$0	\$0	\$0	\$0	\$0	\$400	\$0	\$1,600	\$0	\$2,000
RG1201	\$0	\$0	\$0	\$0	\$0	\$0	\$0	\$0	\$400	\$0	\$1,600	\$0	\$2,000
RP1401	\$0	\$0	\$0	\$0	\$0	\$0	\$0	\$0	\$400	\$0	\$1,600	\$0	\$2,000
RP1501	\$40,000	\$0	\$0	\$0	\$0	\$0	\$0	\$10,000	\$0	\$0	\$0	\$0	\$50,000
SP1018	\$0	\$0	\$248,000	\$0	\$0	\$0	\$0	\$0	\$62,000	\$0	\$0	\$0	\$310,000
SP1106	\$0	\$0	\$0	\$0	\$0	\$0	\$0	\$0	\$1,000	\$0	\$4,000	\$0	\$5,000
SP1109	\$1,506,000	\$0	\$0	\$0	\$2,250,000	\$0	\$0	\$0	\$1,398,400	\$750,000	\$3,877,600	\$343,000	\$10,125,000
SP1112	\$0	\$0	\$0	\$0	\$0	\$0	\$0	\$0	\$400	\$0	\$1,600	\$0	\$2,000
SP1114	\$0	\$0	\$0	\$0	\$160,000	\$0	\$0	\$0	\$0	\$40,000	\$0	\$0	\$200,000
SP1120	\$0	\$0	\$0	\$0	\$4,000	\$0	\$0	\$0	\$0	\$1,000	\$0	\$0	\$5,000
SP1204	\$0	\$0	\$0	\$0	\$0	\$0	\$0	\$0	\$400	\$0	\$1,600	\$0	\$2,000
SP1209	\$0	\$0	\$0	\$499,915	\$0	\$0	\$0	\$124,979	\$0	\$0	\$0	\$0	\$624,894
SP1315	\$0	\$0	\$0	\$0	\$0	\$0	\$0	\$0	\$88,200	\$0	\$352,800	\$0	\$441,000
SP1316	\$0	\$0	\$0	\$0	\$0	\$0	\$0	\$0	\$391,800	\$0	\$1,567,200	\$0	\$1,959,000
SP1318	\$0	\$0	\$0	\$0	\$0	\$0	\$0	\$0	\$233,000	\$0	\$932,000	\$0	\$1,165,000
SP1321	\$10,000	\$0	\$0	\$0	\$0	\$0	\$0	\$3,984	\$0	\$0	\$0	\$0	\$13,984
SP1323	\$47,000	\$0	\$0	\$0	\$0	\$0	\$0	\$10,000	\$32,600	\$0	\$126,400	\$0	\$216,000

FY 2015 continued on next page

FINANCIAL SUMMARY

Roadways

YEARLY SUMMARY

PROJECT	Federal							Local	State			Other	TOTAL
	FHWA (STP-U)	FHWA (SAFETY)	FHWA (BRIDGE)	FHWA (STP)	FHWA (130)	FHWA (HPP)	FHWA (BRO)	LOCAL	MoDOT	MoDOT-GCSA	MoDOT-AC	OTHER	
FY 2015 continued													
SP1401	\$0	\$0	\$0	\$0	\$0	\$0	\$0	\$0	\$1,000	\$0	\$4,000	\$0	\$5,000
SP1403	\$0	\$0	\$0	\$0	\$0	\$0	\$0	\$0	\$120,200	\$0	\$480,800	\$0	\$601,000
SP1405	\$0	\$0	\$0	\$0	\$0	\$0	\$0	\$0	\$400	\$0	\$1,600	\$0	\$2,000
SP1408	\$0	\$0	\$0	\$0	\$0	\$0	\$0	\$0	\$255,400	\$0	\$1,021,600	\$0	\$1,277,000
SP1409	\$0	\$0	\$0	\$0	\$0	\$0	\$0	\$0	\$7,300	\$0	\$65,700	\$0	\$73,000
SP1410	\$0	\$0	\$0	\$0	\$0	\$0	\$0	\$0	\$40,000	\$0	\$160,000	\$0	\$200,000
SP1411	\$0	\$0	\$0	\$0	\$0	\$0	\$0	\$0	\$109,600	\$0	\$438,400	\$0	\$548,000
SP1415	\$0	\$0	\$0	\$0	\$0	\$0	\$0	\$0	\$22,800	\$0	\$91,200	\$0	\$114,000
SP1416	\$0	\$0	\$0	\$0	\$0	\$0	\$0	\$0	\$400	\$0	\$1,600	\$0	\$2,000
SP1501	\$0	\$0	\$0	\$0	\$0	\$0	\$0	\$0	\$75,200	\$0	\$300,800	\$0	\$376,000
WI1301	\$0	\$0	\$0	\$0	\$0	\$0	\$0	\$0	\$1,000	\$0	\$4,000	\$0	\$5,000
WI1501	\$40,000	\$0	\$0	\$0	\$0	\$0	\$0	\$10,000	\$0	\$0	\$0	\$0	\$50,000
SUBTOTAL	\$7,108,612	\$1,000,600	\$248,000	\$668,715	\$3,623,967	\$0	\$1,504,800	\$3,891,595	\$6,466,300	\$1,879,968	\$25,449,256	\$469,065	\$52,310,878
FY 2016													
CC0901	\$0	\$0	\$0	\$0	\$0	\$0	\$0	\$0	\$400	\$0	\$1,600	\$0	\$2,000
CC1102	\$0	\$0	\$0	\$0	\$0	\$0	\$0	\$0	\$400	\$0	\$1,600	\$0	\$2,000
GR1104	\$0	\$0	\$0	\$0	\$128,000	\$0	\$0	\$0	\$0	\$32,000	\$0	\$0	\$160,000
GR1403	\$0	\$0	\$0	\$0	\$0	\$0	\$0	\$0	\$400	\$0	\$1,600	\$0	\$2,000
GR1408	\$0	\$0	\$0	\$0	\$0	\$0	\$0	\$0	\$400	\$0	\$1,600	\$0	\$2,000
GR1501	\$1,200,000	\$0	\$0	\$0	\$0	\$0	\$0	\$300,000	\$0	\$0	\$0	\$0	\$1,500,000
GR1601	\$0	\$0	\$0	\$0	\$0	\$0	\$320,000	\$80,000	\$0	\$0	\$0	\$0	\$400,000
MO1105	\$0	\$0	\$0	\$0	\$0	\$0	\$0	\$0	\$284,000	\$0	\$0	\$0	\$284,000
MO1201	\$0	\$2,700	\$0	\$0	\$0	\$0	\$0	\$0	\$300	\$0	\$0	\$0	\$3,000
MO1404	\$0	\$0	\$0	\$0	\$0	\$0	\$0	\$0	\$4,800	\$0	\$19,200	\$0	\$24,000
MO1601	\$0	\$46,900	\$0	\$0	\$0	\$0	\$0	\$0	\$4,100	\$0	\$0	\$0	\$51,000
MO1603	\$300,000	\$0	\$0	\$0	\$0	\$0	\$0	\$75,000	\$134,600	\$0	\$538,400	\$0	\$1,048,000
MO1604	\$0	\$980,100	\$0	\$0	\$0	\$0	\$0	\$0	\$108,900	\$0	\$0	\$0	\$1,089,000
MO1605	\$0	\$0	\$0	\$0	\$0	\$0	\$0	\$0	\$37,800	\$0	\$151,200	\$0	\$189,000
MO1705	\$0	\$0	\$0	\$0	\$0	\$0	\$0	\$0	\$400	\$0	\$1,600	\$0	\$2,000
NX0906	\$1,307,001	\$0	\$0	\$0	\$0	\$0	\$0	\$326,750	\$344,200	\$0	\$1,376,800	\$0	\$3,354,751
OK1401	\$0	\$0	\$0	\$0	\$0	\$0	\$0	\$0	\$400	\$0	\$1,600	\$0	\$2,000
RG0901	\$0	\$0	\$0	\$0	\$0	\$0	\$0	\$0	\$400	\$0	\$1,600	\$0	\$2,000
RG1201	\$0	\$0	\$0	\$0	\$0	\$0	\$0	\$0	\$1,400	\$0	\$5,600	\$0	\$7,000
RP1401	\$0	\$0	\$0	\$0	\$0	\$0	\$0	\$0	\$41,000	\$0	\$164,000	\$0	\$205,000
SP1018	\$0	\$0	\$4,726,400	\$0	\$0	\$0	\$0	\$0	\$1,181,600	\$0	\$0	\$0	\$5,908,000
SP1106	\$0	\$0	\$0	\$0	\$0	\$0	\$0	\$0	\$400	\$0	\$1,600	\$0	\$2,000
SP1112	\$0	\$0	\$0	\$0	\$0	\$0	\$0	\$0	\$16,000	\$0	\$64,000	\$0	\$80,000
SP1204	\$0	\$0	\$0	\$0	\$0	\$0	\$0	\$0	\$400	\$0	\$1,600	\$0	\$2,000
SP1321	\$10,000	\$0	\$0	\$0	\$0	\$0	\$0	\$3,984	\$0	\$0	\$0	\$0	\$13,984
SP1323	\$681,000	\$0	\$0	\$0	\$0	\$0	\$0	\$172,000	\$156,600	\$0	\$626,400	\$0	\$1,636,000
SP1401	\$0	\$0	\$0	\$0	\$0	\$0	\$0	\$0	\$5,200	\$0	\$20,800	\$0	\$26,000
SP1405	\$0	\$0	\$0	\$0	\$0	\$0	\$0	\$0	\$400	\$0	\$1,600	\$0	\$2,000
SP1409	\$0	\$0	\$0	\$0	\$0	\$0	\$0	\$0	\$996,400	\$0	\$8,967,600	\$0	\$9,964,000
SP1410	\$0	\$0	\$0	\$0	\$0	\$0	\$0	\$0	\$1,833,000	\$0	\$7,332,000	\$0	\$9,165,000
SP1415	\$734,000	\$0	\$0	\$0	\$0	\$0	\$0	\$184,000	\$74,000	\$0	\$298,000	\$0	\$1,290,000
WI1301	\$0	\$0	\$0	\$0	\$0	\$0	\$0	\$0	\$10,000	\$0	\$40,000	\$0	\$50,000
SUBTOTAL	\$4,232,001	\$1,029,700	\$4,726,400	\$0	\$128,000	\$0	\$320,000	\$1,141,734	\$5,237,900	\$32,000	\$19,620,000	\$0	\$36,467,735

FINANCIAL SUMMARY

Roadways

YEARLY SUMMARY

PROJECT	Federal							Local	State			Other	TOTAL
	FHWA (STP-U)	FHWA (SAFETY)	FHWA (BRIDGE)	FHWA (STP)	FHWA (130)	FHWA (HPP)	FHWA (BRO)	LOCAL	MoDOT	MoDOT-GCSA	MoDOT-AC	OTHER	
FY 2017													
CC0901	\$0	\$0	\$0	\$0	\$0	\$0	\$0	\$0	\$400	\$0	\$1,600	\$0	\$2,000
CC1102	\$0	\$0	\$0	\$0	\$0	\$0	\$0	\$0	\$400	\$0	\$1,600	\$0	\$2,000
GR1403	\$0	\$0	\$0	\$0	\$0	\$0	\$0	\$0	\$400	\$0	\$1,600	\$0	\$2,000
MO1105	\$0	\$0	\$0	\$0	\$0	\$0	\$0	\$0	\$284,000	\$0	\$0	\$0	\$284,000
MO1201	\$0	\$80,100	\$0	\$0	\$0	\$0	\$0	\$0	\$8,900	\$0	\$0	\$0	\$89,000
MO1404	\$0	\$0	\$0	\$0	\$0	\$0	\$0	\$0	\$1,115,800	\$0	\$4,463,200	\$0	\$5,579,000
MO1701	\$315,000	\$0	\$0	\$0	\$0	\$0	\$0	\$78,750	\$134,600	\$0	\$538,400	\$0	\$1,086,750
MO1705	\$0	\$0	\$0	\$0	\$0	\$0	\$0	\$0	\$40,000	\$0	\$160,000	\$0	\$200,000
OK1401	\$0	\$0	\$0	\$0	\$0	\$0	\$0	\$0	\$400	\$0	\$1,600	\$0	\$2,000
RG0901	\$0	\$0	\$0	\$0	\$0	\$0	\$0	\$0	\$400	\$0	\$1,600	\$0	\$2,000
RG1201	\$0	\$0	\$0	\$0	\$0	\$0	\$0	\$0	\$67,600	\$0	\$270,400	\$0	\$338,000
SP1106	\$0	\$0	\$0	\$0	\$0	\$0	\$0	\$0	\$400	\$0	\$1,600	\$0	\$2,000
SP1112	\$0	\$0	\$0	\$0	\$0	\$0	\$0	\$0	\$30,000	\$0	\$120,000	\$0	\$150,000
SP1204	\$0	\$0	\$0	\$0	\$0	\$0	\$0	\$0	\$205,200	\$0	\$820,800	\$0	\$1,026,000
SP1401	\$0	\$0	\$0	\$0	\$0	\$0	\$0	\$0	\$91,600	\$0	\$366,400	\$0	\$458,000
SP1405	\$0	\$0	\$0	\$0	\$0	\$0	\$0	\$0	\$400	\$0	\$1,600	\$0	\$2,000
SP1415	\$1,089,292	\$0	\$0	\$0	\$0	\$0	\$0	\$271,823	\$326,777	\$0	\$1,305,108	\$0	\$2,993,000
WI1301	\$0	\$0	\$0	\$0	\$0	\$0	\$0	\$0	\$164,800	\$0	\$659,200	\$0	\$824,000
SUBTOTAL	\$1,404,292	\$80,100	\$0	\$0	\$0	\$0	\$0	\$350,573	\$2,472,077	\$0	\$8,714,708	\$0	\$13,021,750
FY 2018													
CC0901	\$0	\$0	\$0	\$0	\$0	\$0	\$0	\$0	\$400	\$0	\$1,600	\$0	\$2,000
CC1102	\$0	\$0	\$0	\$0	\$0	\$0	\$0	\$0	\$400	\$0	\$1,600	\$0	\$2,000
GR1403	\$0	\$0	\$0	\$0	\$0	\$0	\$0	\$0	\$400	\$0	\$1,600	\$0	\$2,000
MO1105	\$0	\$0	\$0	\$0	\$0	\$0	\$0	\$0	\$284,000	\$0	\$0	\$0	\$284,000
MO1801	\$331,000	\$0	\$0	\$0	\$0	\$0	\$0	\$82,750	\$134,600	\$0	\$538,400	\$0	\$1,086,750
OK1401	\$0	\$0	\$0	\$0	\$0	\$0	\$0	\$0	\$400	\$0	\$1,600	\$0	\$2,000
RG0901	\$0	\$0	\$0	\$0	\$0	\$0	\$0	\$0	\$400	\$0	\$1,600	\$0	\$2,000
SP1106	\$0	\$0	\$0	\$100,000	\$0	\$0	\$0	\$1,179,000	\$313,000	\$0	\$1,252,000	\$0	\$2,844,000
SP1112	\$0	\$0	\$0	\$0	\$0	\$166,134	\$0	\$0	\$792,000	\$0	\$3,001,866	\$0	\$3,960,000
SP1405	\$0	\$0	\$0	\$0	\$0	\$0	\$0	\$0	\$400	\$0	\$1,600	\$0	\$2,000
SUBTOTAL	\$331,000	\$0	\$0	\$100,000	\$0	\$166,134	\$0	\$1,261,750	\$1,526,000	\$0	\$4,801,866	\$0	\$8,186,750
GRAND TOTAL	\$13,075,905	\$2,110,400	\$4,974,400	\$768,715	\$3,751,967	\$166,134	\$1,824,800	\$6,645,652	\$15,702,277	\$1,911,968	\$58,585,830	\$469,065	\$109,987,113

FINANCIAL CONSTRAINT

Roadways

	Federal Funding Source							TOTAL Federal Funds	Local	MoDOT Programmed Funds	Other	State Operations and Maintenance	TOTAL
	STP-U	Safety	Bridge	STP	130	HPP	BRO						
2015 Funds Programmed	\$7,108,612	\$1,000,600	\$248,000	\$668,715	\$3,623,967	\$0	\$1,504,800	\$14,154,694	\$3,891,595	\$33,795,524	\$469,065	\$6,525,006	\$58,835,884
2016 Funds Programmed	\$4,232,001	\$1,029,700	\$4,726,400	\$0	\$128,000	\$0	\$320,000	\$10,436,101	\$1,141,734	\$24,889,900	\$0	\$665,506	\$37,133,241
2017 Funds Programmed	\$1,404,292	\$80,100	\$0	\$0	\$0	\$0	\$0	\$1,484,392	\$350,573	\$11,186,785	\$0	\$6,788,616	\$19,810,366
2018 Funds Programmed	\$331,000	\$0	\$0	\$100,000	\$0	\$166,134	\$0	\$597,134	\$1,261,750	\$6,327,866	\$0	\$6,924,388	\$15,111,138
Total	\$ 13,075,905	\$ 2,110,400	\$ 4,974,400	\$ 768,715	\$ 3,751,967	\$ 166,134	\$ 1,824,800	\$ 26,672,321	\$ 6,645,652	\$ 76,200,075	\$ 469,065	\$ 20,903,516	\$130,890,629

	Prior Year	FY 2015	FY 2016	FY 2017	FY 2018	TOTAL
Available State and Federal Funding	\$24,201,377	\$27,240,000	\$25,680,000	\$8,750,000	\$8,090,000	\$93,961,377
Available Operations and Maintenance Funding	\$ -	\$6,525,006	\$665,506	\$6,788,616	\$6,924,388	\$20,903,516
Available Suballocated STP-U/Small Urban	\$23,213,240	\$5,410,663	\$5,414,570	\$4,599,063	\$4,599,063	\$43,236,599
Available Suballocated BRM	\$1,542,036	\$338,170	\$338,170	\$338,170	\$338,170	\$2,894,716
TOTAL AVAILABLE FUNDING	\$48,956,653	\$39,513,839	\$32,098,246	\$20,475,849	\$19,951,621	\$160,996,208
Prior Year Funding	\$ -	\$48,956,653	\$33,995,268	\$30,102,007	\$31,118,063	-
Programmed State and Federal Funding	\$ -	(\$54,475,224)	(\$35,991,507)	(\$19,459,793)	(\$13,849,388)	(\$123,775,912)
TOTAL REMAINING	\$48,956,653	\$33,995,268	\$30,102,007	\$31,118,063	\$37,220,296	\$37,220,296

Remaining State and Federal Funding	\$4,164,886
Remaining Suballocated STP-Urban/Small Urban	\$30,160,694
Remaining Suballocated BRM	\$2,894,716
TOTAL REMAINING	\$37,220,296