



**OZARKS TRANSPORTATION ORGANIZATION
METROPOLITAN PLANNING ORGANIZATION (MPO)
UNIFIED PLANNING WORK PROGRAM**

FISCAL YEAR 2011

(July 1, 2010 – June 30, 2011)

Ozarks Transportation Organization
117 Park Central Square, Suite 107
Springfield, Missouri 65806

APPROVED BY MPO BOARD OF DIRECTORS: _____

APPROVED BY ONE DOT: ____

Contents

Introduction..... 2

Task 010 – OTO General Administration 3

Task 020- OTO Committee Support..... 4

Task 030 – General Planning and Plan Implementation 5

Task 040 – Transportation Improvement Program 7

Task 050 – Rideshare and Commuter Choice Program 8

Task 060 – Transit Planning 9

Task 070 – Special Studies and Related Projects 12

Financial Expenditure Summary..... 14

MPO Boundary Map..... 15

OTO Organization Chart..... 16

Appendix A

Budget Summary.....17

Introduction

The Unified Planning Work Program (UPWP) is a description of the proposed activities of the Ozarks Transportation Organization during Fiscal Year 2011 (July 2010 - June 2011). The program is prepared annually and serves as a basis for requesting federal planning funds from the U. S. Department of Transportation. All tasks are to be completed by OTO staff unless otherwise identified. (Please note that some staff and services may be provided via a City of Springfield contract).

It also serves as a management tool for scheduling, budgeting, and monitoring the planning activities of the participating agencies. This document was prepared by staff from the Ozarks Transportation Organization, OTO (Springfield Area Metropolitan Planning Organization, MPO) with assistance from various agencies, including the Missouri Department of Transportation, the Federal Highway Administration, the Federal Transit Administration, City Utilities Transit Department, Missouri State University Transportation Department and members of the MPO Technical Planning Committee consisting of representatives from each of the nine MPO jurisdictions.

Ozarks Transportation Organization's Public Participation Plan may be found at:

<http://www.ozarkstransportation.org/Documents/PPP12172009.pdf>

The planning factors used as a basis for the creation of the UPWP are:

- Support the economic vitality of the metropolitan area, especially by enabling global competitiveness, productivity, and efficiency
- Increase the safety of the transportation system for motorized and non-motorized users
- Increase the security of the transportation system for motorized and non-motorized users
- Increase the accessibility and mobility of people and freight
- Protect and enhance the environment, promote energy conservation, improve the quality of life, and promote consistency between transportation improvements and state and local planned growth and economic development patterns
- Enhance the integration and connectivity of the transportation system, across and between modes, for people and freight
- Promote efficient system management and operation
- Emphasize the preservation of the existing transportation system

Task 010 - OTO General Administration

Conduct daily administrative activities including accounting, payroll, maintenance of equipment, software and personnel needed for federally required regional transportation planning activities.

Work Elements:

- **Financial Management (July to June).** (Estimated Cost \$40,000) Preparation of quarterly progress reports, payment requests, and year end reports to MODOT. Maintenance of OTO accounts and budget and reporting to Board of Directors. Responsible Agency: OTO
- **FY 2012 Unified Planning Work Program Preparation (January-June).** (Estimated Cost \$7,000) Responsible Agency: OTO
- **Training (July to June).** (Estimated Cost \$20,000) Training and development of MPO Staff and MPO members through educational programs that are related to MPO work committees. Responsible Agency: OTO
- **General Administration and Contract Management (July-June).** (Estimated Cost \$26,000) Coordinate contract negotiations and Memorandum of Understandings. Responsible Agency: OTO
- **Electronic Support for MPO Operations (July-June).** (Estimated Cost \$20,000) Maintain and update website. Software upgrades and maintenance contracts. Responsible Agency: OTO
- **Disadvantaged Business Compliance.(July-June).** (Estimated Cost \$2,000) Meet federal and state reporting requirements with regard to DBEs and meet MoDOT established DBE goals. Responsible Agency: OTO
- **TITLE VI Compliance (July-June).** (Estimated Cost \$1,000). Accept and process complaint forms and review all projects for Title 6 compliance. Meet federal and state reporting requirements. Responsible Agency: OTO

End Product(s) for FY 2011

- Completed quarterly and end-of-year reports for ONEDOT grant fund accounts
- Completion of the 2012 Unified Planning Work Program
- Attendance of MPO Staff and MPO members at the various training programs
- Monthly updates of website
- Financial Reporting to Board of Directors
- Dues assessment July 2010
- DBE reporting
- Title VI reporting and complaint tracking

Tasks Completed in FY 2010

- Completed quarterly and year end reports to MoDOT for ONEDOT approval
- Completed the FY 2011 UPWP
- Staff attended numerous conferences and training
- Dues assessment July 2009
- Website maintenance
- Completed DBE reporting

Task 010 – OTO General Administration Funding Sources

Local Match Funds	\$ 23,174	20%
Federal CPG Funds	\$ 92,696	80%
Total Funds	\$115,870	

Task 020 - OTO Committee Support

Support various committees of the OTO and participate in various community committees directly relating to regional transportation planning activities.

Work Elements:

- **OTO Committee Support (July-June)**. (Estimated Cost \$70,000) Conduct and staff all Technical Planning Committee, Bicycle and Pedestrian Advisory Committee, Local Coordinating Board for Transit, and Board of Directors meetings. Respond to individual committee requests. Facilitate and administer any MPO subcommittees formed during the Fiscal Year. Responsible Agency: OTO
- **Community Committee Participation (July-June)**. (Estimated Cost \$10,000) Participate in various community committees directly related to transportation. Responsible Agency: OTO
- **Administrative Review of MPO Policy and Administrative Documents (July-June)**. (Estimated Cost \$4,100) Assist in the re-write of bylaws, policy documents, and administrative staff support consistent with the MPO growth. Conduct an annual review of the MPO Public Involvement Policy and make any needed revisions, consistent with federal guidelines. Responsible Agency: OTO
- **Member Attendance at OTO Meetings (July – June)** (In-kind Services \$8,500). OTO member jurisdictions time spent at OTO meetings. Responsible Agencies: OTO and member jurisdictions

End Product(s) for FY 2011

- Conduct meetings and prepare agendas and meeting minutes for OTO Committees and Board.
- Attendance of MPO Staff and MPO members at various community committees
- Revisions to By-Laws, Memorandum of Understanding and Inter-local Agreements; and the Public Involvement Policy

Tasks Completed in FY 2010

- Conducted Technical Committee Meetings, Bicycle and Pedestrian Committee Meetings, UPWP Subcommittee Meetings, Local Coordinating Board for Transit Meetings, and Board of Directors meetings.
- Revisions to By-Laws
- Updated the OTO Public Participation Plan, Limited English Proficiency Plan, and Memorandum of Understanding.
- Staff Participated in the Clean Air Alliance Clean Air Action Plan Committee, Ozark Greenways, Local Safe Routes to School and Childhood Obesity Action Group for Active Living

Task 020 – OTO Committee Support Funding Sources

Local Match Funds	\$10,000	10.8%
In-kind Services	\$ 8,528	9.2%
Federal CPG Funds	\$74,111	80%
Total Funds	\$92,639	

Task 030 – OTO General Planning and Plan Implementation

This task addresses general planning activities including the update to the OTO Long-Range Transportation Plan (LRTP), approval of the functional classification map, the Congestion Management Process (CMP), the Bicycle and Pedestrian Plan as well as the implementation of related plans, and policies. Currently, the Ozarks Transportation Organization's LRTP and CMP are compliant with the requirements of SAFETEA-LU.

Work Elements:

- **Update to the OTO Journey Long-Range Transportation Plan 2030 to 2035 (Completion June)** (Estimated Cost \$25,000) Responsible Agency: OTO
 - Public meetings displays
 - Event public notice, promotion, and marketing materials
 - Citizen public participation materials at meetings
 - Printing of drafts and final LRTP
 - Consultant services for visualization techniques and graphics based on LRTP scenarios (Estimated Cost \$5,000) (*Consultant Contract Needed*)
- **Update to the OTO Travel Demand Model Phase 2 (Completion April)** (Estimated Cost \$50,000) (*Consultant Contract Needed*)
Update to the model that includes revisions to Transportation Analysis Zones, EPA air quality standards, and other analysis that would be required to meet additional planning requirements that result from a new transportation bill. Responsible Agency: OTO
- **Continuation of the Congestion Management Process (July-June)**. (Estimated Cost \$15,000) On-going implementation of selected strategies and coordination of data collection efforts. Responsible Agency: OTO
- **Bicycle and Pedestrian Plan Implementation (July-June)**. (Estimated Cost \$15,000)
The Bicycle and Pedestrian Advisory Committee will continue the implementation of the OTO Area-Wide Bicycle and Pedestrian Plan. Responsible Agency: OTO
- **Geographic Information Systems (GIS) (July-June)**. (Estimated Cost \$25,000)
Continue developing the Geographic Information System (GIS) and work on inputting data into the system that will support the Transportation Planning efforts. Responsible Agency: OTO
- **Air Quality Planning (July-June)**. (Estimated Cost \$20,000)
Staff serves on the Ozarks Clean Air Alliance Committee along with Springfield Greene-County Health Department, which is formulating the first regional Clean Air Action Plan in hopes to preempt designation as a non-attainment area for ozone. Staff will also coordinate the OTO fleet subcommittee to begin discussions on the use of new technologies and fuels in the OTO area that can improve air quality. Responsible Agency: OTO
- **Demographics and Future Projections (July-June)**. (Estimated Cost \$20,000)
Continue to analyze growth and make growth projections for use in transportation decision making by collecting development data and compiling into a demographic report. Responsible Agency: OTO
- **Mapping and Graphics Support for MPO Operations (July-June)** (Estimated Cost \$10,000) Responsible Agency: OTO
- **Statewide Passenger Rail Study** (Estimated Cost \$20,000) In the event that MoDOT undertakes a study to analyze the statewide feasibility of passenger rail service expansion, OTO would like to contribute to the portion of the study that would look at a passenger rail line from St. Louis to Springfield. Completion date unknown. (*Consultant Contract Needed*) Responsible Agency: MoDOT

End Product(s) for FY 2011

- Update to the Long-Range Transportation Plan.
- Implementation of Bicycle and Pedestrian Plan
- Model runs as requested.
- Continued monitoring of attainment status
- Demographic Report

Tasks Completed in FY 2010

- American Recovery and Reinvestment Act Project Selection and Programming
- MoDOT 10 Year Investment Scenario Project Planning and Development
- Amendments to the Long Range Transportation Plan
- Major Thoroughfare Plan amended several times.
- Analyzed specific roadways with regard to congestion for Statewide Prioritization Process
- Maintenance of GIS system layers
- CMP Monitoring Document
- Identification of Priority Bicycle and Pedestrian Projects for the area.
- Review of Enhancement and Safe Route to School Projects
- Bicycle and Pedestrian Plan Implementation Status Report

Task 030 – General Planning and Plan Implementation Funding Sources

Local Match Funds	\$ 39,835	20%
Federal CPG Funds	\$ 159,338	80%
Total Funds	\$ 199,173	

Task 040 – OTO Transportation Improvement Program

Prepare a four-year program for anticipated transportation improvements and amendments as needed.

Work Elements

- **Complete the 2011-2014 Transportation Improvement Program (TIP) (July-August).** (Estimated Cost \$5,000)
TIP should be on the July Technical Planning Committee Agenda and the August Board of Directors Agenda.
Responsible Agency: OTO
- **Begin the 2012-2015 Transportation Improvement Program (TIP) (March-June).** (Estimated Cost \$67,000)
Responsible Agency: OTO
 - Conduct the Public Involvement Process for the TIP (March-August).
 - Work with the TIP Subcommittees (June).
 - Complete Draft document
- **Coordinate, Advertise, and Submit all TIP Amendments (July-June).** (Estimated Cost \$8,500) Responsible Agency: OTO
- **Complete the Annual Listing of Obligated Projects (October- December)** (Estimated Cost \$500) Responsible Agency: OTO
- **TIP Software (January)** (Estimated Cost \$25,000) *(Consultant Contract Needed)* Purchase software to make an online searchable database for projects. Responsible Agency: OTO

End Product(s) for FY 2011

- TIP amendments, as needed.
- Adopted FY 2011-2014 Transportation Improvement Program
- Draft FY 2012-2015 Transportation Improvement Program
- Annual Listing of Obligated Projects

Tasks Completed in FY 2010

- Draft FY 2011-2014 Transportation Improvement Program
- Amended the FY 2010-2013 TIP numerous times

Task 040 - Transportation Improvement Program Funding Sources

Local Match Funds	\$ 21,165	20%
Federal CPG Funds	\$ 84,659	80%
Total Funds	\$105,824	

Task 050 – OTO Rideshare and Commuter Choice

The Congestion Management Process recommends a revised rideshare program that focuses on employer-based strategies and employer targeting through such national initiatives as Commuter Choice and Parking Cash-out be deployed in the OTO Study Area.

Work Elements

- **Ride-Share and Commuter Choice Advertising (July – June)**. (City Utility Donated Services \$5,000)
OTO will promote and advertise the Rideshare and Commuter Choice Program through the City Utilities Transit System. Responsible Agency: OTO
- **Continued deployment of OzarksCommute.com rideshare/commuter choice program (July -June)**.(Estimated Cost \$19,000) Responsible Agency: OTO
 - Maintain capability to match riders and drivers in response to requests for shared rides (ongoing).
 - Promote rideshare program.
 - Monthly maintenance of rideshare program (\$750/Month)
- **Continued deployment of rideshare/commuter choice program (July-June)**. (Estimated Cost \$17,000)
Responsible Agency: OTO
 - Work with Springfield Area Chamber of Commerce to select and meet with target employers.
 - Provide on-site technical assistance to employers who agree to participate.
 - Conduct on-site transportation fairs at targeted employers.
 - Serve as transportation ambassadors to employees.
 - Maintain records and prepare reports on quarterly rideshare status. (ongoing)
 - Publicizing the rideshare program. Will include bus wraps, banners, and other marketing material for public events (ongoing)

End Products for FY 2011

- Continued coordination of rideshare requests.
- Use web-based software to track commuter choices.
- Commuter Choice program for major employers.
- Purchase of marketing materials for use in association with Commuter Choice program.
- Work with targeted major employers to develop Commuter Choice programs.
- Completion of quarterly and annual rideshare program reports.

Tasks Completed in FY 2010

- Maintained carpool database and matched list
- Participated in the Share the Ride Statewide Campaign
- Implemented web-based ride-matching program with several employer portals
- Advertised and promoted ride-match software

Task 050 - Rideshare and Commuter Choice Program Funding Sources

Local Match Funds	\$ 3,186	7.78%
CU Donated Services	\$ 5,000	12.22%
Federal CPG Funds	\$32,744	80 %
Total Funds	\$40,930	

Task 060- OTO and City Utilities Transit Planning

Prepare plans to provide efficient and cost-effective transit service for transit users.

Work Elements

- **Operational Planning (July-June)**. (Estimated Cost \$40,000) Responsible Agencies: OTO and City Utilities
 - MPO Staff shall support operational planning functions including, surveys and analysis of headway and schedules, and development of proposed changes in transit services.
 - Route Analysis
 - City Utilities Transit grant submittal and tracking.
 - City Utilities and MPO development of information for certification reviews.
 - City Utilities Transit collection and analysis of data required for the National Transit Data Base Report. Occasionally MPO Staff provide information toward this report, such as the data from the National Transit Database bus survey.
 - City Utilities Transit and MPO will conduct marketing and customer service programs.
 - CU Transit studies about management, operations, capital requirements and economic feasibility.
 - CU Transit participation in Ozarks Transportation Organization committees and related public hearings.
 - CU Transit, MSU and MPO Staff collection and reporting of data required for the National Transit Database survey, conducted every three years.
 - CU Transit collection of data required to implement the requirements of the Americans with Disabilities Act and non-discriminatory practices. (FTA Line Item Code 44.24.00)
 - The Local Coordinating Board for Transit will review the Transit Coordination Plan and make recommendation to the OTO Board of Directors for any necessary amendments.

- **ADA Accessibility (July-June)**. (Estimated Cost \$5,000) Responsible Agency: City Utilities
 - OTO Staff to work with City Utilities Transit staff on transportation improvements at bus stops (i.e. bus turnouts).
 - CU Transit retains contract management for ADA projects with MPO staff assistance as requested.
 - MPO Staff and City Utilities Transit staff to work together on efforts to provide curb cuts and sidewalk accessibility at bus stops and shelters around Springfield, on an annual basis. (FTA Line Item Code 44.24.00)

- **Transit Fixed Route Analysis (September-June)** (Estimated Cost \$70,000) *Consultant Contract Needed*. Analysis of the current fixed route system in order to recommend the most appropriate route structure of the current system as well as system expansion given budget restrictions. This will look at alternatives to the hub and spoke system within the City of Springfield to analyze a possible system modification and the budget ramifications of a modification. This was a recommendation in the Transit Development Plan for City Utilities Transit to consider a change in the route structure it currently uses within the City of Springfield. Responsible Agency: City Utilities

- **Service Planning (July-June)**. (Estimated Cost \$40,000) Responsible Agencies: OTO and City Utilities
 - As recommended by the Transit Development Plan (TDP), MPO staff lead in developing a strategic plan to create a regional transit system.
 - Per the TDP, use of a marketing/public relations consultant to educate and inform elected official and the public of the costs and benefits of a regional transit system.
 - Per the recommendations of the Transit Coordination Plan, use recommended project selection criteria for selection of human service agency transit projects.
 - MPO Staff collection of data from paratransit operations as required.
 - MPO Staffing of the Local Coordinating Board for Transit
 - CU Transit development of route and schedule alternatives to make services more efficient and cost-effective within current hub and spoke system operating within the City of Springfield. A Transit Fixed Route Analysis will be prepared to evaluate the current route structure. (FTA Line Item Code 44.23.01)
 - MPO Staff and City Utilities Transit participation in special transit studies.

- As part of the TIP process, a competitive selection process will be conducted for selection of 5307, 5310, 5316 (JARC), 5317 (New Freedom) projects.
- **Financial Planning (July-June).** (Estimated Cost \$22,000) Responsible Agency: City Utilities
 - CU Transit analysis of transit system performance by adopted policies to achieve effective utilization of available resources.
 - CU Transit preparation of long and short-range financial and capital plans.
 - CU Transit will identify possible cost-saving techniques and opportunities.
 - CU Transit, with potential assistance from MPO Staff, will identify potential revenue from non-federal sources to meet future operating deficit and capital costs. (FTA Line Item Code 44.26.84)
- **Competitive Contract Planning (July-June).** (Estimated Cost \$10,000) Responsible Agencies: OTO, City Utilities and Missouri State University
 - CU Transit will study opportunities for transit cost reduction through the use of third-party and private sector providers.
 - Missouri State University will continue to monitor costs of their third-party private sector transit contractor.
 - CU Transit and MPO Staff will study potential coordination of private sector transportation with the existing and potential public sector providers to minimize unserved populace.
 - MPO Staff to maintain a list of operators developed in the transit coordination plan for use by City Utilities (CU) and other transit providers in the development of transit plans.
 - MPO Staff to cooperate with MSU, CU, and their consultants in the evaluation of existing services.
- **Safety, Security and Drug and Alcohol Control Planning (July-June).** (Estimated Cost \$20,000) Responsible Agencies: OTO, City Utilities and Missouri State University
 - CU and Missouri State University have adopted policies of drug-free awareness programs to inform their employees on the dangers of drug abuse. (FTA Line Item Code 44.26.82) Funding is intended to assist in the development of a drug and alcohol awareness program in an effort to provide a drug and alcohol-free working environment for the employees at CU, and MSU transit. In particular, special studies addressing critical transportation and related drug and alcohol issues may need to be completed.
 - The MPO, CU and MSU will review existing plans and procedures for maintaining security on existing transit facilities and take steps to mitigate any identified shortcomings.

End Products for FY 2011

- Transit agency coordination (MPO Staff)
- Strategic plan for creation of regional transit system (CU, MPO staff and possible consultant)
- Project rankings and allocations in the 2012-2015 TIP related to transit, and various new ADA accessible bus shelters and stops. (MPO staff)
- Special Studies (MPO Staff, CU, and possible consultant services as necessary)
- Transit Fixed Route Analysis Report

Tasks Completed in FY 2010

- Project rankings and allocations in the 2011-2013 TIP related to transit, and various new ADA accessible bus shelters and stops.
- On-Board bus surveys.
- Quarterly reporting to National Transit Database.
- Transit Forum
- Cost Analysis

Task 060 Transit Planning Funding Sources

Local Match Funds \$ 19,433 20%

Federal CPG Funds \$ 77,730 80%

Total OTO Funds \$ 97,163

CU Match Funds \$ 21,960 20%

FTA 5307 Funds \$ 87,838 80%

Total Funds \$109,798

Total Task 060 Funds \$206,961

Task 070 – OTO and MoDOT Special Studies and Projects

Conduct special transportation studies (issues not discussed in the Transportation Plan), as requested by the MPO Board of Directors, subject to funding availability. Priority for these studies shall be given to those projects that address recommendations and implementation strategies from the Long-Range Transportation Plan.

Work Elements (July-June)

- **MoDOT Transportation Studies and Data Collection (Direct Cost Services \$15,429)** Responsible Agency: MoDOT. OTO would work with MoDOT to conduct a Traffic Count Program to provide hourly and daily volumes for use in the Congestion Management System, Long Range Transportation Plan and Travel Demand Model. Transportation Studies would be conducted to provide accident data for use in the Congestion Management System. Speed Studies would be conducted to analyze signal progression to meet requirements of Congestion Management System. Miscellaneous studies to analyze congestion along essential corridors would also be a billable activity under this task.

Source of Eligible MoDOT Match

MoDOT Position	Yearly Salary	Yearly Fringe	Yearly Total	Yearly % Time	OTO Eligible
Senior Traffic Studies Specialist	\$52,500	\$26,394	\$78,894	7.00%	\$5,523
Intermediate Traffic Studies Specialist	\$45,852	\$22,003	\$67,855	14.60%	\$9,907
					\$15,429

- **Continued Coordination with entities that are implementing Intelligent Transportation Systems.** (Estimated Cost \$10,000) Coordination with the Traffic Management Center in Springfield and with City Utilities transit as needed. Responsible Agency: OTO
- **Studies of Parking, Land Use, and Traffic Circulation.** (Estimated Cost \$20,000) Studies that are requested by member jurisdictions to look at traffic, parking or land use. Responsible Agency: OTO
- **Other Special Studies in accordance with the Adopted Long-Range Transportation Plan.** (Estimated Cost \$12,000) Studies relating to projects in the Long Range Transportation Plan. Responsible Agency: OTO
- **Travel Time Runs and Traffic Counts (February- April)** (Estimated Cost \$20,000). Data collection efforts to support the OTO planning products, signal timing and transportation decision making. *(Consultant Contract Needed)* Responsible Agency: OTO

End Products for FY 2011

- Preparation of special requests, such as:
 - Memos
 - Public information requests
 - Parking & land use circulation studies
 - Other projects as needed, subject to MPO Staff availability and expertise.

Tasks Completed in FY 2010

- Adopted an updated list of Priority Projects of Regional Significance for the MPO
- Organized a Transportation Forum to discuss alternative modes of transportation

Task 070- *Special Studies and Related Projects* Funding Sources

Local Match Funds	0%
MoDOT Direct Costs	\$15,429 20%
Federal CPG Funds	\$61,716 80%
Total Funds	\$77,145

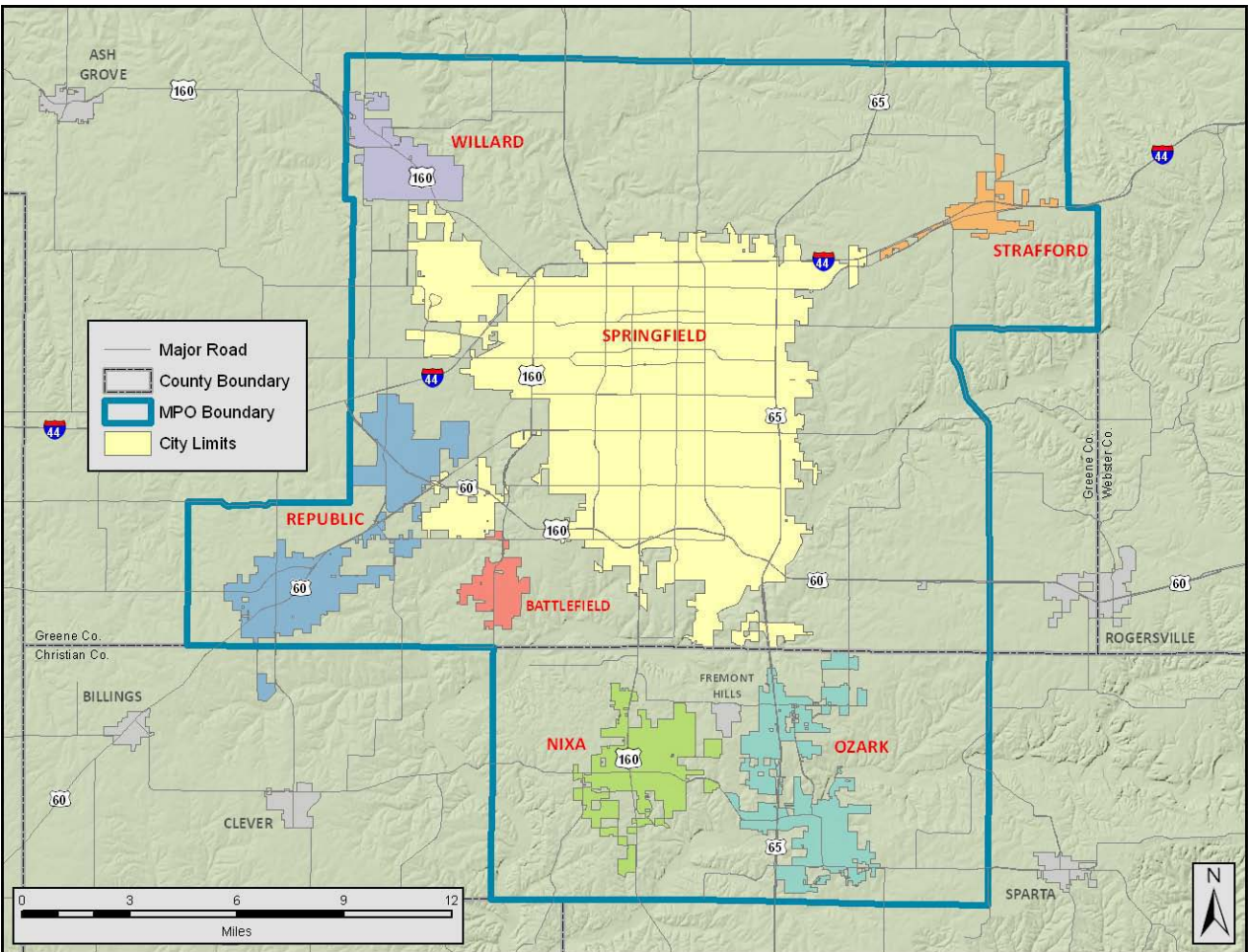
Financial Expenditure Summary

		<u>Local</u> <u>Match</u>	<u>CU Match</u>	<u>In Kind</u> <u>Services/</u> <u>Donated</u>	<u>Federal</u> <u>CPG</u>	<u>Federal</u> <u>5307</u>	<u>TOTAL</u>	<u>%</u>
Task	10	\$23,174			\$92,696		\$115,870	15.90%
Task	20	\$10,000		\$8,528	\$74,111		\$92,639	12.71%
Task	30	\$39,835			\$159,338		\$199,173	27.33%
Task	40	\$21,165			\$84,659		\$105,824	14.52%
Task	50	\$3,186		\$5,000	\$32,744		\$40,930	5.62%
Task	60	\$5,433	\$14,000		\$77,730		\$97,163	13.33%
Task	70	\$0		\$15,429	\$61,716		\$77,145	10.59%
TOTAL		\$102,793	\$14,000	\$28,957	\$582,994		\$728,744	100%
Task	60		\$21,960			\$87,838	\$109,798	
UPWP								
TOTAL		\$102,793	\$35,960	\$28,957	\$582,994	\$87,838	\$838,542	

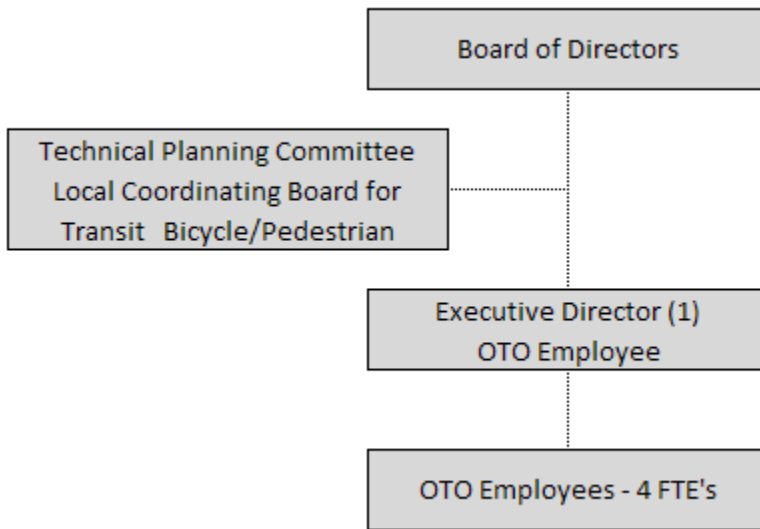
Remaining CPG Funds Balance available for Prior Years UPWP	\$ 981,463.71
FY 2010 Estimated CPG Funds allocation	\$ 359,579.61
FY 2010 Estimated CPG Expenditures	\$ -380,000.00
FY 2011 Estimated CPG Funds allocation*	\$ 472,000.00
TOTAL Estimated CPG Funds Available for FY 2011 UPWP	\$ 1,433,043.32
TOTAL CPG Funds Programmed for FY 2011	\$ 582,994.00
Remaining Unprogrammed Balance	\$ 850,049.32

*The FY 2011 Estimated CPG funds allocation is an estimated figure based on the FY 2009 actual allocation. This amount will not be known until the passage of a new federal transportation bill.

OSARKS TRANSPORTATION ORGANIZATION BOUNDARY MAP



Ozarks Transportation Organization
Organization Chart



Board and Committee membership composition may be found at:
<http://www.ozarkstransportation.org/Documents/OTObY-Laws10162008.pdf>