



Transportation Improvement Program - FY 2020-2023

Project Detail by Section and Project Number with Map

J) Pending Amendment Section

TIP # SP2101-20A6 **OR 44 PAVEMENT RESURFACING IN SPRINGFIELD**

Route OR 44

From Farm Road 112

To 0.2 mile west of Rte. 13

Location City of Springfield

Federal Agency None

Project Sponsor MoDOT

Federal Funding Category None

MoDOT Funding Category Taking Care of the System

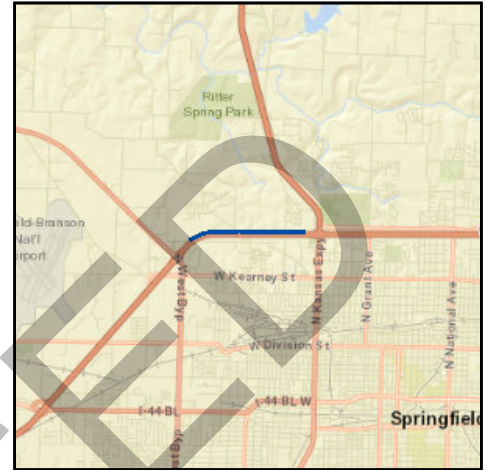
Bike/Ped Plan? EJ?

STIP # 8S3219

Federal ID #

Project Description

Pavement resurfacing from FR 112 to 0.2 mile west of Rte. 13 in Springfield.



Fund Code	Source	Phase	FY2020	FY2021	FY2022	FY2023	Total
MoDOT	State	ENG	\$0	\$8,000	\$23,000	\$0	\$31,000
MoDOT	State	CON	\$0	\$0	\$227,033	\$0	\$227,033
Totals			\$0	\$8,000	\$250,033	\$0	\$258,033

Notes

Non-Federal Funding Source: State Transportation Revenues

FYI: Federal Funding Category upon Anticipated Advanced Construction (AC)
Conversion - STBG

Prior Cost	\$0
Future Cost	\$0
Total Cost	\$258,033



Transportation Improvement Program - FY 2020-2023

Project Detail by Section and Project Number with Map

F) Roadways Section

TIP # SP2101-20A5 **OR 44 PAVEMENT RESURFACING IN SPRINGFIELD**

Route OR 44

From Farm Road 112

To 0.2 mile west of Rte. 13

Location City of Springfield

Federal Agency None

Project Sponsor MoDOT

Federal Funding Category None

MoDOT Funding Category Taking Care of the System

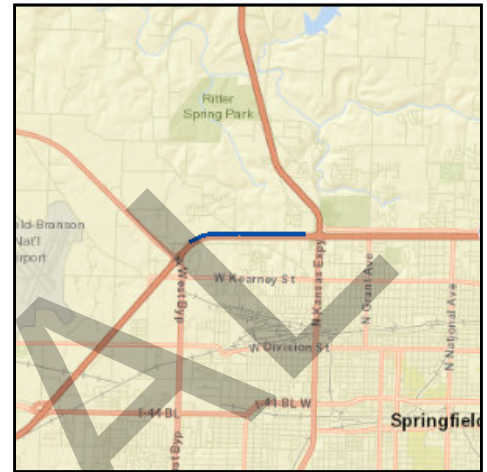
Bike/Ped Plan? EJ?

STIP # 8S3219

Federal ID #

Project Description

Pavement resurfacing from FR 112 to 0.2 mile west of Rte. 13 in Springfield.



Fund Code	Source	Phase	FY2020	FY2021	FY2022	FY2023	Total
MoDOT	State	ENG	\$0	\$8,000	\$23,000	\$0	\$31,000
Totals			\$0	\$8,000	\$23,000	\$0	\$31,000

Notes

Non-Federal Funding Source: State Transportation Revenues

FYI: Federal Funding Category upon Anticipated Advanced Construction (AC)
Conversion - STBG

Prior Cost	\$0
Future Cost	\$227,033
Total Cost	\$258,033



Transportation Improvement Program - FY 2020-2023

Project Detail by Section and Project Number with Map

F) Roadways Section

TIP # MO2201-20 **CURVE SAFETY IMPROVEMENTS AT VARIOUS LOCATIONS**

Route Various

From

To

Location

Federal Agency FHWA

Project Sponsor MoDOT

Federal Funding Category Safety

MoDOT Funding Category Safety

Bike/Ped Plan? EJ?

STIP # 0X3122I

Federal ID #

Project Description

Curve safety improvements at various locations in the urban Southwest District.



Fund Code	Source	Phase	FY2020	FY2021	FY2022	FY2023	Total
FHWA (SAFETY)	Federal	CON	\$0	\$0	\$24,000	\$0	\$24,000
MoDOT	State	CON	\$0	\$0	\$3,000	\$0	\$3,000
Totals			\$0	\$0	\$27,000	\$0	\$27,000

Notes

Non-Federal Funding Source: State Transportation Revenues

FYI: Bike/Ped and EJ Needs Dependent on Locations

Prior Cost	\$0
Future Cost	\$0
Total Cost	\$27,000



Transportation Improvement Program - FY 2020-2023

Project Detail by Section and Project Number with Map

J) Pending Amendment Section

TIP # SP1816-20A6 **KANSAS EXPRESSWAY AND SUNSET STREET**

Route Rte. 13

From Rte. 13

To Sunset Street

Location City of Springfield

Federal Agency FHWA

Project Sponsor MoDOT

Federal Funding Category NHPP

MoDOT Funding Category Major Projects and Emerging Needs

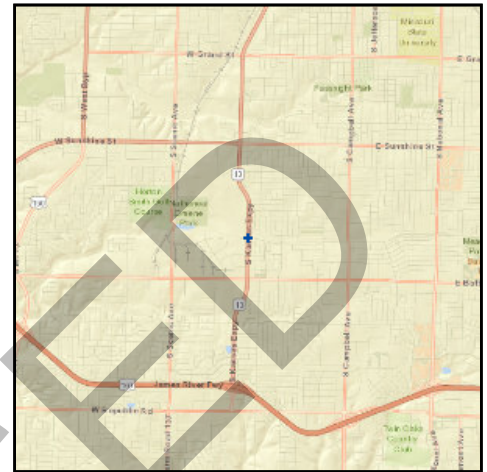
Bike/Ped Plan? Yes **EJ?** Yes

STIP # 8P3087E

Federal ID #

Project Description

Intersection improvements on Kansas Expressway (Route 13) at Sunset Street in Springfield.



Fund Code	Source	Phase	FY2020	FY2021	FY2022	FY2023	Total
FHWA (NHPP)	Federal	ENG	\$1,600	\$111,200	\$113,600	\$198,400	\$424,800
MoDOT	State	ENG	\$400	\$27,800	\$28,400	\$49,600	\$106,200
FHWA (NHPP)	Federal	ROW	\$0	\$0	\$34,172	\$0	\$34,172
FHWA (STBG-U)	Federal	ROW	\$0	\$0	\$61,828	\$0	\$61,828
LOCAL	Local	ROW	\$0	\$0	\$15,457	\$0	\$15,457
MoDOT	State	ROW	\$0	\$0	\$8,543	\$0	\$8,543
FHWA (NHPP)	Federal	CON	\$0	\$0	\$0	\$569,772	\$569,772
FHWA (STBG-U)	Federal	CON	\$0	\$0	\$0	\$1,030,915	\$1,030,915
LOCAL	Local	CON	\$0	\$0	\$0	\$257,729	\$257,729
MoDOT	State	CON	\$0	\$0	\$0	\$142,443	\$142,443
Totals			\$2,000	\$139,000	\$262,000	\$2,248,859	\$2,651,859

Notes

Non-Federal Funding Source: State Transportation Revenues, City of Springfield Sales Tax

FYI: District Cost Share

Prior Cost	\$80,000
Future Cost	\$0
Total Cost	\$2,731,859



Transportation Improvement Program - FY 2020-2023

Project Detail by Section and Project Number with Map

F) Roadways Section

TIP # SP1816-18A2 **KANSAS EXPRESSWAY AND SUNSET STREET**

Route Rte. 13

From Rte. 13

To Sunset Street

Location City of Springfield

Federal Agency FHWA

Project Sponsor MoDOT

Federal Funding Category NHPP

MoDOT Funding Category Major Projects and Emerging Needs

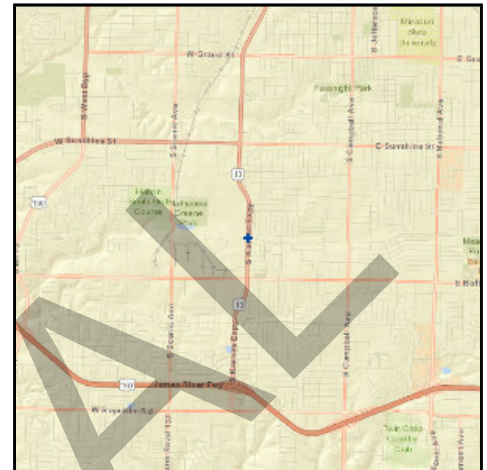
Bike/Ped Plan? Yes **EJ?** Yes

STIP # 8P3087E

Federal ID #

Project Description

Scoping for intersection improvements on Kansas Expressway (Route 13) at Sunset Street in Springfield.



Fund Code	Source	Phase	FY2020	FY2021	FY2022	FY2023	Total
FHWA (NHPP)	Federal	ENG	\$58,400	\$44,000	\$4,000	\$0	\$106,400
MoDOT	State	ENG	\$14,600	\$11,000	\$1,000	\$0	\$26,600
Totals			\$73,000	\$55,000	\$5,000	\$0	\$133,000

Notes

Non-Federal Funding Source: State Transportation Revenues, City of Springfield Sales Tax

FYI: District Cost Share

Prior Cost	\$80,000
Future Cost	\$0
Total Cost	\$213,000



Transportation Improvement Program - FY 2020-2023

Project Detail by Section and Project Number with Map

J) Pending Amendment Section

TIP # SP1817-20A6 **KANSAS EXPRESSWAY AND WALNUT LAWN**

Route Rte. 13
From Rte. 13
To Walnut Lawn Street
Location City of Springfield
Federal Agency FHWA
Project Sponsor MoDOT
Federal Funding Category NHPP
MoDOT Funding Category Major Projects and Emerging Needs
Bike/Ped Plan? Yes **EJ?** Yes
STIP # 8P3087F
Federal ID #



Project Description

Intersection improvements on Kansas Expressway (Route 13) at Walnut Lawn Street in Springfield.

Fund Code	Source	Phase	FY2020	FY2021	FY2022	FY2023	Total
FHWA (NHPP)	Federal	ENG	\$1,600	\$40,000	\$203,200	\$225,600	\$470,400
MoDOT	State	ENG	\$400	\$10,000	\$50,800	\$56,400	\$117,600
FHWA (NHPP)	Federal	ROW	\$0	\$0	\$50,655	\$0	\$50,655
FHWA (STBG-U)	Federal	ROW	\$0	\$0	\$91,745	\$0	\$91,745
LOCAL	Local	ROW	\$0	\$0	\$22,936	\$0	\$22,936
MoDOT	State	ROW	\$0	\$0	\$12,664	\$0	\$12,664
FHWA (NHPP)	Federal	CON	\$0	\$0	\$0	\$632,803	\$632,803
FHWA (STBG-U)	Federal	CON	\$0	\$0	\$0	\$1,146,113	\$1,146,113
LOCAL	Local	CON	\$0	\$0	\$0	\$286,529	\$286,529
MoDOT	State	CON	\$0	\$0	\$0	\$158,201	\$158,201
Totals			\$2,000	\$50,000	\$432,000	\$2,505,646	\$2,989,646

Notes

Non-Federal Funding Source: State Transportation Revenues, City of Springfield Sales Tax

FYI: District Cost Share

Prior Cost \$105,000
Future Cost \$0
Total Cost \$3,094,646



Transportation Improvement Program - FY 2020-2023

Project Detail by Section and Project Number with Map

F) Roadways Section

TIP # SP1817-18A2 **KANSAS EXPRESSWAY AND WALNUT LAWN**

Route Rte. 13

From Rte. 13

To Walnut Lawn Street

Location City of Springfield

Federal Agency FHWA

Project Sponsor MoDOT

Federal Funding Category NHPP

MoDOT Funding Category Major Projects and Emerging Needs

Bike/Ped Plan? Yes **EJ?** Yes

STIP # 8P3087F

Federal ID #

Project Description

Scoping for intersection improvements on Kansas Expressway (Route 13) at Walnut Lawn Street in Springfield.



Fund Code	Source	Phase	FY2020	FY2021	FY2022	FY2023	Total
FHWA (NHPP)	Federal	ENG	\$55,200	\$56,000	\$1,600	\$0	\$112,800
MoDOT	State	ENG	\$13,800	\$14,000	\$400	\$0	\$28,200
Totals			\$69,000	\$70,000	\$2,000	\$0	\$141,000

Notes

Non-Federal Funding Source: State Transportation Revenues, City of Springfield Sales Tax

FYI: District Cost Share

Prior Cost	\$105,000
Future Cost	\$0
Total Cost	\$246,000



Transportation Improvement Program - FY 2020-2023

Project Detail by Section and Project Number with Map

F) Roadways Section

TIP # MO1904-19 INTERSECTION IMPROVEMENTS AT VARIOUS LOCATIONS

Route Various

From Various

To Various

Location

Federal Agency FHWA

Project Sponsor MoDOT

Federal Funding Category Advance Construction

MoDOT Funding Category Major Projects and Emerging Needs

Bike/Ped Plan? EJ?

STIP # 8P3087G

Federal ID #

Project Description

Intersection improvements at various locations in the urban Southwest District.



Fund Code	Source	Phase	FY2020	FY2021	FY2022	FY2023	Total
MoDOT	State	ENG	\$400	\$20,000	\$80,000	\$100,400	\$200,800
MoDOT-AC	State	ENG	\$1,600	\$80,000	\$320,000	\$401,600	\$803,200
MoDOT	State	ROW	\$0	\$0	\$21,200	\$0	\$21,200
MoDOT-AC	State	ROW	\$0	\$0	\$84,800	\$0	\$84,800
MoDOT	State	CON	\$0	\$0	\$0	\$417,600	\$417,600
MoDOT-AC	State	CON	\$0	\$0	\$0	\$1,670,400	\$1,670,400
Totals			\$2,000	\$100,000	\$506,000	\$2,590,000	\$3,198,000

Notes

Non-Federal Funding Source: State Transportation Revenues

FYI: Federal Funding Category upon Anticipated Advanced Construction (AC)
Conversion - NHPP; Bike/Ped and EJ Needs Dependent on Locations

Prior Cost	\$2,000
Future Cost	\$0
Total Cost	\$3,200,000



Transportation Improvement Program - FY 2020-2023

Project Detail by Section and Project Number with Map

F) Roadways Section

TIP # SP1401 SIGNAL REPLACEMENT PROGRAM - KANSAS EXPRESSWAY

Route Kansas Expressway (Route 13)

From Sunset Street

To Walnut Lawn Street

Location City of Springfield

Federal Agency FHWA

Project Sponsor MoDOT

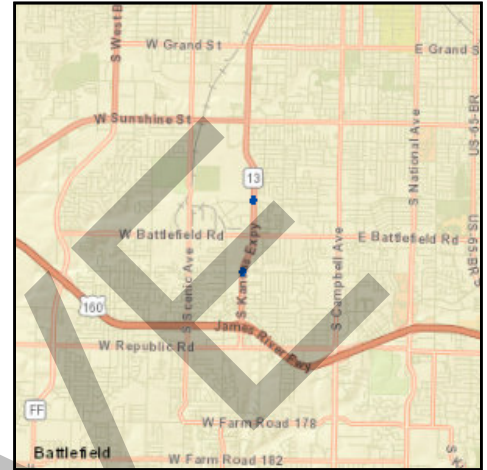
Federal Funding Category NHPP(NHS)

MoDOT Funding Category Taking Care of the System

Bike/Ped Plan? Yes **EJ?** Yes

STIP # 8P2390

Federal ID # 0132076



Project Description

Upgrade signals on Kansas Expressway (Route 13) at Sunset Street and Walnut Lawn Street in Springfield.

Fund Code	Source	Phase	FY2020	FY2021	FY2022	FY2023	Total
FHWA (NHPP)	Federal	ENG	\$5,600	\$6,400	\$8,000	\$66,400	\$86,400
MoDOT	State	ENG	\$1,400	\$1,600	\$2,000	\$16,600	\$21,600
FHWA (NHPP)	Federal	CON	\$0	\$0	\$0	\$359,200	\$359,200
MoDOT	State	CON	\$0	\$0	\$0	\$89,800	\$89,800
Totals			\$7,000	\$8,000	\$10,000	\$532,000	\$557,000

Notes

Non-Federal Funding Source: State Transportation Revenues

Prior Cost	\$42,000
Future Cost	\$0
Total Cost	\$599,000



Transportation Improvement Program - FY 2020-2023

Project Detail by Section and Project Number with Map

E) Bicycle & Pedestrian Section

TIP # EN2004-20 **WEST BYPASS ADA SIDEWALK UPGRADE I-44 TO SUNSHINE**

Route Rte. 160
From south of I-44
To Sunshine Street (Rte. 413)
Location City of Springfield
Federal Agency FHWA
Project Sponsor MoDOT
Federal Funding Category STBG
MoDOT Funding Category Taking Care of the System
Bike/Ped Plan? Yes **EJ?** Yes
STIP # 8P3174
Federal ID #



Project Description

Upgrade sidewalk to comply with the ADA Transition Plan at various locations on West Bypass from south of I-44 to Sunshine Street (Rte. 413).

Fund Code	Source	Phase	FY2020	FY2021	FY2022	FY2023	Total
FHWA (STBG)	Federal	ENG	\$1,600	\$5,600	\$9,600	\$0	\$16,800
MoDOT	State	ENG	\$400	\$1,400	\$2,400	\$0	\$4,200
FHWA (STBG)	Federal	ROW	\$0	\$1,600	\$0	\$0	\$1,600
MoDOT	State	ROW	\$0	\$400	\$0	\$0	\$400
FHWA (STBG)	Federal	CON	\$0	\$0	\$38,400	\$0	\$38,400
MoDOT	State	CON	\$0	\$0	\$9,600	\$0	\$9,600
Totals			\$2,000	\$9,000	\$60,000	\$0	\$71,000

Notes

Non-Federal Funding Source: State Transportation Revenues

Prior Cost	\$0
Future Cost	\$0
Total Cost	\$71,000



Transportation Improvement Program - FY 2020-2023

Project Detail by Section and Project Number with Map

J) Pending Amendment Section

TIP # EN1803-20A6 **JEFFERSON AVENUE FOOTBRIDGE**

Route Jefferson over the BNSF RR

From Chase Street

To Commercial Street

Location City of Springfield

Federal Agency FHWA

Project Sponsor City of Springfield

Federal Funding Category STBG-U

MoDOT Funding Category N/A

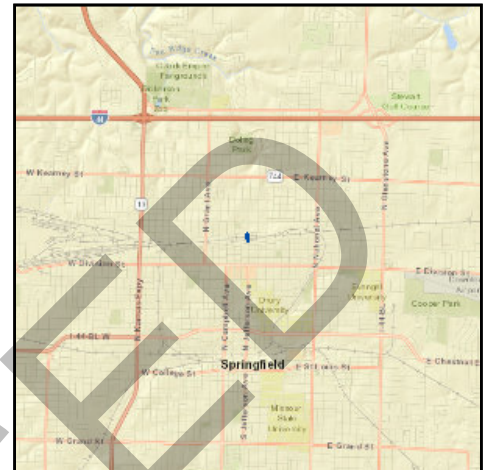
Bike/Ped Plan? Yes **EJ?** Yes

STIP #

Federal ID #

Project Description

Rehabilitate the historic Jefferson Avenue Footbridge including replacing structurally deficient members, adding ADA ramps to both sides of the bridge, painting the entire structure, and adding lighting and site improvements.



Fund Code	Source	Phase	FY2020	FY2021	FY2022	FY2023	Total
FHWA (STBG-U)	Federal	ENG	\$0	\$80,000	\$0	\$0	\$80,000
LOCAL	Local	ENG	\$0	\$20,000	\$0	\$0	\$20,000
FHWA (STBG-U)	Federal	CON	\$0	\$2,480,000	\$0	\$0	\$2,480,000
LOCAL	Local	CON	\$0	\$620,000	\$0	\$0	\$620,000
Totals			\$0	\$3,200,000	\$0	\$0	\$3,200,000

Notes

Non-Federal Funding Source: City of Springfield Transportation Revenues

Prior Cost	\$0
Future Cost	\$0
Total Cost	\$3,200,000



Transportation Improvement Program - FY 2020-2023

Project Detail by Section and Project Number with Map

E) Bicycle & Pedestrian Section

TIP # EN1803-18A3 **JEFFERSON AVENUE FOOTBRIDGE**

Route Jefferson over the BNSF RR

From Chase Street

To Commercial Street

Location City of Springfield

Federal Agency FHWA

Project Sponsor City of Springfield

Federal Funding Category STBG-U

MoDOT Funding Category N/A

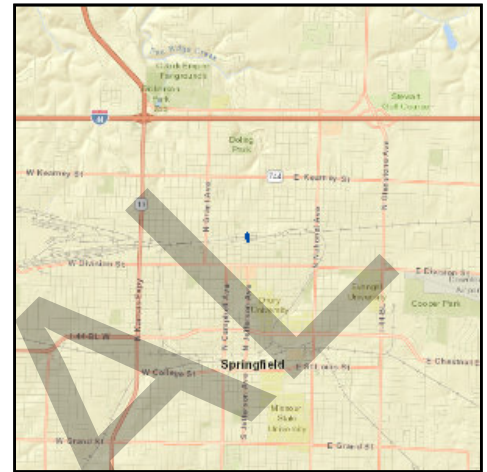
Bike/Ped Plan? Yes **EJ?** Yes

STIP #

Federal ID #

Project Description

Rehabilitate the historic Jefferson Avenue Footbridge including replacing structurally deficient members, adding ADA ramps to both sides of the bridge, painting the entire structure, and adding lighting and site improvements.



Fund Code	Source	Phase	FY2020	FY2021	FY2022	FY2023	Total
FHWA (STBG-U)	Federal	CON	\$2,000,000	\$0	\$0	\$0	\$2,000,000
LOCAL	Local	CON	\$500,000	\$0	\$0	\$0	\$500,000
Totals			\$2,500,000	\$0	\$0	\$0	\$2,500,000

Notes

Non-Federal Funding Source: City of Springfield Transportation Revenues

Prior Cost	\$0
Future Cost	\$0
Total Cost	\$2,500,000



Transportation Improvement Program - FY 2020-2023

Project Detail by Section and Project Number with Map

J) Pending Amendment Section

TIP # CU2008-20A6 2020 CARES ACT

Route

From

To

Location City Utilities

Federal Agency FTA

Project Sponsor City Utilities

Federal Funding Category 5307

MoDOT Funding Category N/A

Bike/Ped Plan? EJ? Yes

STIP #

Federal ID #

Project Description

In response to the COVID-19 pandemic, FTA allocated CU Transit \$7,633,199 with no required match, to support capital, operating, and other expenses eligible under Section 5307.



Fund Code	Source	Phase	FY2020	FY2021	FY2022	FY2023	Total
FTA (5307)	Federal	CAPITAL	\$2,000,000	\$2,000,000	\$2,000,000	\$1,633,199	\$7,633,199
Totals			\$2,000,000	\$2,000,000	\$2,000,000	\$1,633,199	\$7,633,199

Notes

Non-Federal Funding Source: N/A; 100% Federally Funded

Prior Cost	\$0
Future Cost	\$0
Total Cost	\$7,633,199



Transportation Improvement Program - FY 2020-2023

Project Detail by Section and Project Number with Map

J) Pending Amendment Section

TIP # CU1808-20A6 **TRANSIT BUS STOP ADA IMPROVEMENTS**

Route

From

To

Location City Utilities

Federal Agency FTA

Project Sponsor City Utilities

Federal Funding Category 5310

MoDOT Funding Category N/A

Bike/Ped Plan? Yes **EJ?** Yes

STIP #

Federal ID #

Project Description

Partnership with City of Springfield for a project on Division between Kansas Expressway and West Avenue to construct ADA accessible sidewalks and associated stormwater and roadway improvements on the south side of the street, providing accessibility to bus passengers and pedestrians.



Fund Code	Source	Phase	FY2020	FY2021	FY2022	FY2023	Total
FTA (5310)	Federal	CAPITAL	\$113,837	\$0	\$0	\$0	\$113,837
LOCAL	Local	CAPITAL	\$213,394	\$0	\$0	\$0	\$213,394
Totals			\$327,231	\$0	\$0	\$0	\$327,231

Notes

Federal Funding Source: FTA Section 5310 Funding

Non-Federal Funding Source: City of Springfield (\$184,935); City Utilities Transit (\$83,013)

Prior Cost \$272,769

Future Cost \$0

Total Cost \$600,000



Transportation Improvement Program - FY 2020-2023

Project Detail by Section and Project Number with Map

F) Transit Section

TIP # CU1808-17A5 TRANSIT BUS STOP ADA IMPROVEMENTS

Route

From

To

Location

City Utilities

Federal Agency

FTA

Project Sponsor

City Utilities

Federal Funding Category 5310

MoDOT Funding Category N/A

Bike/Ped Plan? Yes **EJ?** Yes

STIP #

Federal ID #

Project Description

Partnership with City of Springfield for a project on Division between Kansas Expressway and West Avenue to construct ADA accessible sidewalks and associated stormwater and roadway improvements on the south side of the street, providing accessibility to bus passengers and pedestrians.



Fund Code	Source	Phase	FY2020	FY2021	FY2022	FY2023	Total
FTA (5310)	Federal	CAPITAL	\$115,846	\$0	\$0	\$0	\$115,846
LOCAL	Local	CAPITAL	\$220,782	\$0	\$0	\$0	\$220,782
Totals			\$336,628	\$0	\$0	\$0	\$336,628

Notes

Federal Funding Source: FTA Section 5310 Funding

Non-Federal Funding Source: City of Springfield (\$193,082); City Utilities Transit (\$140,979)

Prior Cost \$269,039

Future Cost \$0

Total Cost \$605,667



Transportation Improvement Program - FY 2020-2023

Project Detail by Section and Project Number with Map

J) Pending Amendment Section

TIP # CU2005-20A6 **FY 2020 TRANSIT SECURITY - FTA 5307**

Route N/A

From N/A

To N/A

Location City Utilities

Federal Agency FTA

Project Sponsor City Utilities

Federal Funding Category 5307

MoDOT Funding Category None

Bike/Ped Plan? EJ? Yes

STIP #

Federal ID #

Project Description

This project is for the purchase of capital security equipment to meet the 1% requirement for Section 5307 funding.



Fund Code	Source	Phase	FY2020	FY2021	FY2022	FY2023	Total
FTA (5307)	Federal	CAPITAL	\$26,907	\$0	\$0	\$0	\$26,907
LOCAL	Local	CAPITAL	\$6,727	\$0	\$0	\$0	\$6,727
Totals			\$33,634	\$0	\$0	\$0	\$33,634

Notes

Non-Federal Funding Source: CU Farebox, Advertising, and Utility Ratepayers

FYI: CU is required to spend at least 1% on capital security projects per Section 5307 Security Requirements unless there is not sufficient need

Prior Cost \$0

Future Cost \$0

Total Cost \$33,634



Transportation Improvement Program - FY 2020-2023

Project Detail by Section and Project Number with Map

F) Transit Section

TIP # CU2005-17A2 **FY 2020 TRANSIT SECURITY - FTA 5307**

Route N/A

From N/A

To N/A

Location City Utilities

Federal Agency FTA

Project Sponsor City Utilities

Federal Funding Category 5307

MoDOT Funding Category None

Bike/Ped Plan? EJ? Yes

STIP #

Federal ID #

Project Description

This project is for the purchase of capital security equipment to meet the 1% requirement for Section 5307 funding.



Fund Code	Source	Phase	FY2020	FY2021	FY2022	FY2023	Total
FTA (5307)	Federal	CAPITAL	\$26,907	\$0	\$0	\$0	\$26,907
LOCAL	Local	CAPITAL	\$6,930	\$0	\$0	\$0	\$6,930
Totals			\$33,837	\$0	\$0	\$0	\$33,837

Notes

Non-Federal Funding Source: CU Farebox, Advertising, and Utility Ratepayers

FYI: CU is required to spend at least 1% on capital security projects per Section 5307 Security Requirements unless there is not sufficient need

Prior Cost \$0

Future Cost \$0

Total Cost \$33,837



Transportation Improvement Program - FY 2020-2023

Project Detail by Section and Project Number with Map

J) Pending Amendment Section

TIP # CU2007-20A6 PURCHASE TRAINING TECHNOLOGY AND SMALL FLEET VEHICLES

Route N/A

From N/A

To N/A

Location City Utilities

Federal Agency FTA

Project Sponsor City Utilities

Federal Funding Category 5339

MoDOT Funding Category N/A

Bike/Ped Plan? EJ?

STIP #

Federal ID #

Project Description

Capital purchase of one bus training simulator, small fleet vehicles, and digital signage.



Fund Code	Source	Phase	FY2020	FY2021	FY2022	FY2023	Total
FTA (5339)	Federal	CAPITAL	\$300,494	\$0	\$0	\$0	\$300,494
LOCAL	Local	CAPITAL	\$75,124	\$0	\$0	\$0	\$75,124
Totals			\$375,618	\$0	\$0	\$0	\$375,618

Notes

Federal Funding Source: FTA Section 5339 Discretionary Funding from FY 2019.

Non-Federal Funding Source: CU Farebox, Advertising, and Utility Ratepayers.

Prior Cost	\$0
Future Cost	\$0
Total Cost	\$375,618



Transportation Improvement Program - FY 2020-2023

Project Detail by Section and Project Number with Map

F) Transit Section

TIP # CU2007-20A1 **PURCHASE TRAINING TECHNOLOGY AND SMALL FLEET VEHICLES**

Route N/A

From N/A

To N/A

Location City Utilities

Federal Agency FTA

Project Sponsor City Utilities

Federal Funding Category 5339

MoDOT Funding Category N/A

Bike/Ped Plan? EJ?

STIP #

Federal ID #

Project Description

Capital replacement of two bus training simulators and small fleet vehicles.



Fund Code	Source	Phase	FY2020	FY2021	FY2022	FY2023	Total
FTA (5339)	Federal	CAPITAL	\$300,494	\$0	\$0	\$0	\$300,494
LOCAL	Local	CAPITAL	\$75,124	\$0	\$0	\$0	\$75,124
Totals			\$375,618	\$0	\$0	\$0	\$375,618

Notes

Federal Funding Source: FTA Section 5339 Discretionary Funding from FY 2019.

Non-Federal Funding Source: CU Farebox, Advertising, and Utility Ratepayers.

Prior Cost	\$0
Future Cost	\$0
Total Cost	\$375,618



Transportation Improvement Program - FY 2020-2023

Project Detail by Section and Project Number with Map

J) Pending Amendment Section

TIP # CU2101-20A6 **FY 2021 PREVENTIVE MAINTENANCE**

Route N/A

From N/A

To N/A

Location City Utilities

Federal Agency FTA

Project Sponsor City Utilities

Federal Funding Category 5307

MoDOT Funding Category None

Bike/Ped Plan? EJ? Yes

STIP #

Federal ID #

Project Description

Subsidy of preventive maintenance expenses for existing public transit service.



Fund Code	Source	Phase	FY2020	FY2021	FY2022	FY2023	Total
FTA (5307)	Federal	MAINT	\$0	\$790,704	\$0	\$0	\$790,704
LOCAL	Local	MAINT	\$0	\$197,676	\$0	\$0	\$197,676
Totals			\$0	\$988,380	\$0	\$0	\$988,380

Notes

Non-Federal Funding Source: CU Farebox, Advertising, and Utility Ratepayers

FYI: CU will be requesting Preventive Maintenance Funding for FY 2021 Section 5307 Grant Application

Prior Cost	\$0
Future Cost	\$0
Total Cost	\$988,380



Transportation Improvement Program - FY 2020-2023

Project Detail by Section and Project Number with Map

F) Transit Section

TIP # CU2101 FY 2021 PREVENTIVE MAINTENANCE

Route N/A

From N/A

To N/A

Location City Utilities

Federal Agency FTA

Project Sponsor City Utilities

Federal Funding Category 5307

MoDOT Funding Category None

Bike/Ped Plan? EJ? Yes

STIP #

Federal ID #

Project Description

Subsidy of preventive maintenance expenses for existing public transit service.



Fund Code	Source	Phase	FY2020	FY2021	FY2022	FY2023	Total
FTA (5307)	Federal	MAINT	\$0	\$790,704	\$0	\$0	\$790,704
LOCAL	Local	MAINT	\$0	\$203,888	\$0	\$0	\$203,888
Totals			\$0	\$994,592	\$0	\$0	\$994,592

Notes

Non-Federal Funding Source: CU Farebox, Advertising, and Utility Ratepayers

FYI: CU will be requesting Preventive Maintenance Funding for FY 2021 Section 5307 Grant Application

Prior Cost	\$0
Future Cost	\$0
Total Cost	\$994,592



Transportation Improvement Program - FY 2020-2023

Project Detail by Section and Project Number with Map

J) Pending Amendment Section

TIP # CU2104-20A6 **FY 2021 TRANSIT PLANNING - FTA 5307**

Route N/A

From N/A

To N/A

Location City Utilities

Federal Agency FTA

Project Sponsor City Utilities

Federal Funding Category 5307

MoDOT Funding Category None

Bike/Ped Plan? EJ? Yes

STIP #

Federal ID #

Project Description

This project is listed in the OTO Unified Planning Work Program each year for short range transit planning activities.



Fund Code	Source	Phase	FY2020	FY2021	FY2022	FY2023	Total
FTA (5307)	Federal	OPER	\$0	\$174,787	\$0	\$0	\$174,787
LOCAL	Local	OPER	\$0	\$43,697	\$0	\$0	\$43,697
Totals			\$0	\$218,484	\$0	\$0	\$218,484

Notes

Non-Federal Funding Source: CU Farebox, Advertising, and Utility Ratepayers

Prior Cost	\$0
Future Cost	\$0
Total Cost	\$218,484



Transportation Improvement Program - FY 2020-2023

Project Detail by Section and Project Number with Map

F) Transit Section

TIP # CU2104 **FY 2021 TRANSIT PLANNING - FTA 5307**

Route N/A

From N/A

To N/A

Location City Utilities

Federal Agency FTA

Project Sponsor City Utilities

Federal Funding Category 5307

MoDOT Funding Category None

Bike/Ped Plan? EJ? Yes

STIP #

Federal ID #

Project Description

This project is listed in the OTO Unified Planning Work Program each year for short range transit planning activities.



Fund Code	Source	Phase	FY2020	FY2021	FY2022	FY2023	Total
FTA (5307)	Federal	OPER	\$0	\$174,787	\$0	\$0	\$174,787
LOCAL	Local	OPER	\$0	\$44,982	\$0	\$0	\$44,982
Totals			\$0	\$219,769	\$0	\$0	\$219,769

Notes

Non-Federal Funding Source: CU Farebox, Advertising, and Utility Ratepayers

Prior Cost	\$0
Future Cost	\$0
Total Cost	\$219,769



Transportation Improvement Program - FY 2020-2023

Project Detail by Section and Project Number with Map

J) Pending Amendment Section

TIP # CU2105-20A6 **FY 2021 TRANSIT SECURITY - FTA 5307**

Route N/A

From N/A

To N/A

Location City Utilities

Federal Agency FTA

Project Sponsor City Utilities

Federal Funding Category 5307

MoDOT Funding Category None

Bike/Ped Plan? EJ? Yes

STIP #

Federal ID #

Project Description

This project is for the purchase of capital security equipment to meet the 1% requirement for Section 5307 funding.



Fund Code	Source	Phase	FY2020	FY2021	FY2022	FY2023	Total
FTA (5307)	Federal	CAPITAL	\$0	\$27,445	\$0	\$0	\$27,445
LOCAL	Local	CAPITAL	\$0	\$6,861	\$0	\$0	\$6,861
Totals			\$0	\$34,306	\$0	\$0	\$34,306

Notes

Non-Federal Funding Source: CU Farebox, Advertising, and Utility Ratepayers

FYI: CU is required to spend at least 1% on capital security projects per Section 5307 Security Requirements unless there is not sufficient need

Prior Cost \$0

Future Cost \$0

Total Cost \$34,306



Transportation Improvement Program - FY 2020-2023

Project Detail by Section and Project Number with Map

F) Transit Section

TIP # CU2105 FY 2021 TRANSIT SECURITY - FTA 5307

Route N/A

From N/A

To N/A

Location City Utilities

Federal Agency FTA

Project Sponsor City Utilities

Federal Funding Category 5307

MoDOT Funding Category None

Bike/Ped Plan? EJ? Yes

STIP #

Federal ID #

Project Description

This project is for the purchase of capital security equipment to meet the 1% requirement for Section 5307 funding.



Fund Code	Source	Phase	FY2020	FY2021	FY2022	FY2023	Total
FTA (5307)	Federal	CAPITAL	\$0	\$27,445	\$0	\$0	\$27,445
LOCAL	Local	CAPITAL	\$0	\$7,069	\$0	\$0	\$7,069
Totals			\$0	\$34,514	\$0	\$0	\$34,514

Notes

Non-Federal Funding Source: CU Farebox, Advertising, and Utility Ratepayers

FYI: CU is required to spend at least 1% on capital security projects per Section 5307 Security Requirements unless there is not sufficient need

Prior Cost \$0

Future Cost \$0

Total Cost \$34,514



Transportation Improvement Program - FY 2020-2023

Project Detail by Section and Project Number with Map

J) Pending Amendment Section

TIP # CU2111-20A6 **FY 2021 PURCHASE 2 ELECTRIC FIXED ROUTE BUSES**

Route

From N/A

To N/A

Location City Utilities

Federal Agency FTA

Project Sponsor City Utilities

Federal Funding Category 5339

MoDOT Funding Category N/A

Bike/Ped Plan? EJ? Yes

STIP #

Federal ID #

Project Description

FY 2021 capital replacement of two, new 35-foot low-floor fixed route electric buses and chargers.



Fund Code	Source	Phase	FY2020	FY2021	FY2022	FY2023	Total
FTA (5339)	Federal	CAPITAL	\$0	\$1,496,329	\$0	\$0	\$1,496,329
LOCAL	Local	CAPITAL	\$0	\$6,082	\$0	\$0	\$6,082
OTHER	Other	CAPITAL	\$0	\$368,000	\$0	\$0	\$368,000
Totals			\$0	\$1,870,411	\$0	\$0	\$1,870,411

Notes

Federal Funding Source: FTA FY 2019 Section 5339(c) Low or No Emission Vehicle Program

Prior Cost \$0

Future Cost \$0

Non-Federal Funding Source: Missouri Department of Natural Resources (\$368,000); City Utilities (\$6,082)

Total Cost \$1,870,411



Transportation Improvement Program - FY 2020-2023

Project Detail by Section and Project Number with Map

F) Transit Section

TIP # CU2111-20A1 FY 2021 PURCHASE 2 ELECTRIC FIXED ROUTE BUSES

Route

From N/A

To N/A

Location City Utilities

Federal Agency FTA

Project Sponsor City Utilities

Federal Funding Category 5339

MoDOT Funding Category N/A

Bike/Ped Plan? EJ? Yes

STIP #

Federal ID #

Project Description

FY 2021 capital replacement of two, new 35-foot low-floor fixed route electric buses and chargers.



Fund Code	Source	Phase	FY2020	FY2021	FY2022	FY2023	Total
FTA (5339)	Federal	CAPITAL	\$0	\$1,496,329	\$0	\$0	\$1,496,329
LOCAL	Local	CAPITAL	\$0	\$374,082	\$0	\$0	\$374,082
Totals			\$0	\$1,870,411	\$0	\$0	\$1,870,411

Notes

Federal Funding Source: FTA FY 2019 Section 5339(c) Low or No Emission Vehicle Program

Non-Federal Funding Source: CU Farebox, Advertising, and Utility Ratepayers

Prior Cost \$0

Future Cost \$0

Total Cost \$1,870,411

FINANCIAL SUMMARY

Bicycle & Pedestrian

YEARLY SUMMARY

	Federal					Local	State		
PROJECT	FHWA (STBG-U)	FHWA (TAP)	FHWA (NHPP)	FHWA (STAP)	FHWA (STBG)	LOCAL	MoDOT	MoDOT-AC	TOTAL
2020									
EN1513-19AM1	\$488,494	\$0	\$0	\$0	\$0	\$122,122	\$0	\$0	\$610,616
EN1706	\$0	\$0	\$0	\$0	\$8,000	\$0	\$2,000	\$0	\$10,000
EN1801-18	\$0	\$0	\$0	\$0	\$12,000	\$0	\$3,000	\$0	\$15,000
EN1802-18	\$0	\$0	\$0	\$0	\$333,600	\$0	\$83,400	\$0	\$417,000
EN1803-20A6	\$0	\$0	\$0	\$0	\$0	\$0	\$0	\$0	\$0
EN1901-19	\$0	\$0	\$0	\$0	\$1,600	\$0	\$400	\$0	\$2,000
EN1902-19A2	\$0	\$193,075	\$0	\$0	\$0	\$48,269	\$0	\$0	\$241,344
EN1903-19A2	\$0	\$155,439	\$0	\$0	\$0	\$42,060	\$0	\$0	\$197,499
EN1904-19A3	\$0	\$272,000	\$0	\$0	\$0	\$68,000	\$0	\$0	\$340,000
EN1905-19A3	\$324,014	\$0	\$0	\$0	\$0	\$81,004	\$0	\$0	\$405,018
EN1906-19A3	\$187,990	\$0	\$0	\$0	\$0	\$46,998	\$0	\$0	\$234,988
EN1907-19A3	\$0	\$139,621	\$0	\$0	\$0	\$34,906	\$0	\$0	\$174,527
EN1908-19A3	\$0	\$297,093	\$0	\$0	\$0	\$74,274	\$0	\$0	\$371,367
EN1909-19A3	\$183,365	\$0	\$0	\$0	\$0	\$45,841	\$0	\$0	\$229,206
EN1910-19A3	\$146,098	\$0	\$0	\$0	\$0	\$36,524	\$0	\$0	\$182,622
EN1911-19A3	\$0	\$72,708	\$0	\$0	\$0	\$18,177	\$0	\$0	\$90,885
EN1912-19A3	\$0	\$85,911	\$0	\$0	\$0	\$21,478	\$0	\$0	\$107,389
EN1913-19A3	\$110,869	\$0	\$0	\$0	\$0	\$27,717	\$0	\$0	\$138,586
EN1914-19AM2	\$0	\$0	\$0	\$0	\$25,600	\$0	\$6,400	\$0	\$32,000
EN2002-20A5	\$0	\$0	\$0	\$0	\$0	\$0	\$15,000	\$60,000	\$75,000
EN2003-20	\$0	\$0	\$0	\$0	\$1,600	\$0	\$400	\$0	\$2,000
EN2004-20A6	\$0	\$0	\$0	\$0	\$0	\$0	\$0	\$0	\$0
EN2005-20	\$0	\$0	\$0	\$0	\$0	\$0	\$6,000	\$24,000	\$30,000
EN2006-20	\$0	\$0	\$0	\$0	\$0	\$0	\$10,000	\$40,000	\$50,000
EN2007-20	\$0	\$0	\$1,600	\$0	\$0	\$0	\$400	\$0	\$2,000
EN2008-20A3	\$78,000	\$0	\$0	\$0	\$0	\$43,500	\$0	\$0	\$121,500
EN2010-20A5	\$394,214	\$0	\$0	\$0	\$0	\$98,554	\$0	\$0	\$492,768
EN2011-20A3	\$33,603	\$0	\$0	\$0	\$0	\$8,401	\$0	\$0	\$42,004
EN2012-20A3	\$100,000	\$0	\$0	\$0	\$0	\$25,000	\$0	\$0	\$125,000
SP2001-19A6	\$0	\$0	\$0	\$0	\$125,978	\$0	\$0	\$0	\$125,978
SUBTOTAL	\$2,046,647	\$1,215,847	\$1,600	\$0	\$508,378	\$842,825	\$127,000	\$124,000	\$4,866,297

FINANCIAL SUMMARY

Bicycle & Pedestrian

YEARLY SUMMARY

	Federal					Local	State		
PROJECT	FHWA (STBG-U)	FHWA (TAP)	FHWA (NHPP)	FHWA (STAP)	FHWA (STBG)	LOCAL	MoDOT	MoDOT-AC	TOTAL
2021									
EN1706	\$0	\$0	\$0	\$0	\$8,000	\$0	\$2,000	\$0	\$10,000
EN1801-18	\$0	\$0	\$0	\$264,000	\$682,400	\$0	\$236,600	\$0	\$1,183,000
EN1802-18	\$0	\$0	\$0	\$0	\$1,639,200	\$0	\$409,800	\$0	\$2,049,000
EN1803-20A6	\$2,560,000	\$0	\$0	\$0	\$0	\$640,000	\$0	\$0	\$3,200,000
EN1901-19	\$0	\$0	\$0	\$0	\$244,000	\$0	\$61,000	\$0	\$305,000
EN1914-19AM2	\$0	\$0	\$0	\$0	\$378,400	\$0	\$94,600	\$0	\$473,000
EN2002-20A5	\$0	\$0	\$0	\$0	\$0	\$0	\$1,000	\$4,000	\$5,000
EN2003-20	\$0	\$0	\$0	\$0	\$40,000	\$0	\$10,000	\$0	\$50,000
EN2004-20A6	\$0	\$0	\$0	\$0	\$0	\$0	\$0	\$0	\$0
EN2005-20	\$0	\$0	\$0	\$0	\$0	\$0	\$22,200	\$88,800	\$111,000
EN2006-20	\$0	\$0	\$0	\$0	\$0	\$0	\$67,000	\$268,000	\$335,000
EN2007-20	\$0	\$0	\$1,600	\$0	\$0	\$0	\$400	\$0	\$2,000
EN2008-20A3	\$792,949	\$0	\$0	\$0	\$0	\$294,000	\$0	\$0	\$1,086,949
EN2009-20A3	\$217,461	\$0	\$0	\$0	\$0	\$54,365	\$0	\$0	\$271,826
EN2010-20A5	\$412,493	\$59,392	\$0	\$0	\$0	\$117,971	\$0	\$0	\$589,856
EN2011-20A3	\$253,283	\$0	\$0	\$0	\$0	\$63,321	\$0	\$0	\$316,604
EN2103-20A5	\$0	\$0	\$0	\$0	\$0	\$0	\$7,690	\$30,760	\$38,450
SUBTOTAL	\$4,236,186	\$59,392	\$1,600	\$264,000	\$2,992,000	\$1,169,657	\$912,290	\$391,560	\$10,026,685
2022									
EN1901-19	\$0	\$0	\$196,000	\$315,000	\$704,200	\$0	\$303,800	\$0	\$1,519,000
EN2002-20A5	\$0	\$0	\$0	\$0	\$0	\$0	\$1,000	\$4,000	\$5,000
EN2003-20	\$0	\$0	\$0	\$0	\$152,800	\$0	\$38,200	\$0	\$191,000
EN2004-20A6	\$0	\$0	\$0	\$0	\$0	\$0	\$0	\$0	\$0
EN2005-20	\$0	\$0	\$0	\$0	\$0	\$0	\$184,600	\$738,400	\$923,000
EN2006-20	\$0	\$0	\$0	\$0	\$0	\$0	\$290,600	\$1,162,400	\$1,453,000
EN2007-20	\$0	\$0	\$1,600	\$0	\$0	\$0	\$400	\$0	\$2,000
EN2103-20A5	\$0	\$0	\$0	\$0	\$0	\$0	\$49,382	\$199,129	\$248,511
SUBTOTAL	\$0	\$0	\$197,600	\$315,000	\$857,000	\$0	\$867,982	\$2,103,929	\$4,341,511
2023									
EN2002-20A5	\$0	\$0	\$0	\$0	\$0	\$0	\$1,000	\$4,000	\$5,000
EN2003-20	\$0	\$0	\$0	\$0	\$1,304,000	\$0	\$326,000	\$0	\$1,630,000
EN2007-20	\$0	\$0	\$8,000	\$0	\$0	\$0	\$2,000	\$0	\$10,000
SUBTOTAL	\$0	\$0	\$8,000	\$0	\$1,304,000	\$0	\$329,000	\$4,000	\$1,645,000
GRAND TOTAL	\$6,282,833	\$1,275,239	\$208,800	\$579,000	\$5,661,378	\$2,012,482	\$2,236,272	\$2,623,489	\$20,879,493

FINANCIAL CONSTRAINT

Bicycle & Pedestrian

	Federal (FHWA)					Local	MoDOT-AC	MoDOT	TOTAL
	STBG-U	TAP	NHPP	STBG	STAP				
PRIOR YEAR									
Balance		\$ 853,353	\$ -			\$ -	\$ -	\$ -	\$ 853,353
FY 2020									
Funds Anticipated	\$ 2,046,647	\$ 421,887	\$ 1,600	\$508,378.00	\$0.00	\$ 842,825	\$ 124,000	\$ 127,000	\$ 4,072,337
Funds Programmed	(\$2,046,647)	(\$1,215,847)	(\$1,600)	(\$508,378)	\$0	(\$842,825)	(\$124,000)	(\$127,000)	(\$4,866,297)
Running Balance	\$0.00	\$59,393.38	\$0.00	\$0.00	\$0.00	\$0.00	\$0.00	\$0.00	\$59,393.38
FY 2021									
Funds Anticipated	\$ 4,236,186	\$430,324.80	\$1,600.00	\$2,992,000.00	\$264,000.00	\$1,169,657.00	\$391,560.00	\$912,290.00	\$ 10,397,618
Funds Programmed	(\$4,236,186)	(\$59,392)	(\$1,600)	(\$2,992,000)	(\$264,000)	(\$1,169,657)	(\$391,560)	(\$912,290)	(\$10,026,685)
Running Balance	\$0.00	\$430,326.18	\$0.00	\$0.00	\$0.00	\$0.00	\$0.00	\$0.00	\$430,326.18
FY 2022									
Funds Anticipated	\$ -	\$438,931.30	\$197,600.00	\$857,000.00	\$315,000.00	\$0.00	\$2,103,929.00	\$867,982.00	\$ 4,780,442
Funds Programmed	\$0	\$0	(\$197,600)	(\$857,000)	(\$315,000)	\$0	(\$2,103,929)	(\$867,982)	(\$4,341,511)
Running Balance	\$0.00	\$869,257.48	\$0.00	\$0.00	\$0.00	\$0.00	\$0.00	\$0.00	\$869,257.48
FY 2023									
Funds Anticipated	\$ -	\$447,709.92	\$8,000.00	\$1,304,000.00	\$0.00	\$0.00	\$4,000.00	\$329,000.00	\$ 2,092,710
Funds Programmed	\$0	\$0	(\$8,000)	(\$1,304,000)	\$0	\$0	(\$4,000)	(\$329,000)	(\$1,645,000)
Running Balance	\$0.00	\$1,316,967.40	\$0.00	\$0.00	\$0.00	\$0.00	\$0.00	\$0.00	\$1,316,967.40

* STBG-Urban funds are available for use on both Bicycle/Pedestrian Projects and Roadway projects. Their distribution between these types of projects is not determined ahead of their programming by project. To see the entire amount of funding available for STBG-Urban, please visit page H-viii, Table H.2 or page H-10. STBG and STAP funding are statewide funding, with programming selected by MoDOT in consultation with OTO.

FINANCIAL SUMMARY

Roadways

YEARLY SUMMARY																			
PROJECT	FHWA (STBG-U)	FHWA (SAFETY)	FHWA (BRIDGE)	FHWA (I/M)	FHWA (130)	Federal						Local			State				TOTAL
						FHWA (BRO)	FHWA (NHPP)	FHWA (STBG)	FHWA (BUILD)	FRA (CRISB)	FEMA	LOCAL	LOCAL-AC	OTHER	MoDOT	MoDOT-GCSA	MoDOT-AC	SEMA	
2020																			
BA1801-18	\$0	\$0	\$0	\$0	\$0	\$0	\$413,600	\$0	\$0	\$0	\$0	\$0	\$0	\$0	\$103,400	\$0	\$0	\$0	\$517,000
CC0901	\$0	\$0	\$0	\$0	\$0	\$0	\$0	\$8,000	\$0	\$0	\$0	\$0	\$0	\$0	\$2,000	\$0	\$0	\$0	\$10,000
CC1102	\$0	\$0	\$0	\$0	\$0	\$0	\$1,600	\$0	\$0	\$0	\$0	\$0	\$0	\$0	\$400	\$0	\$0	\$0	\$2,000
CC1703	\$0	\$0	\$0	\$0	\$0	\$0	\$0	\$4,000	\$0	\$0	\$0	\$0	\$0	\$0	\$1,000	\$0	\$0	\$0	\$5,000
CC1802	\$0	\$0	\$0	\$0	\$0	\$0	\$40,000	\$0	\$0	\$0	\$0	\$0	\$0	\$0	\$10,000	\$0	\$0	\$0	\$50,000
CC1803-18	\$0	\$1,800	\$0	\$0	\$0	\$0	\$0	\$0	\$0	\$0	\$0	\$0	\$0	\$0	\$200	\$0	\$0	\$0	\$2,000
CC1901-19	\$0	\$0	\$0	\$0	\$0	\$0	\$0	\$0	\$0	\$0	\$0	\$0	\$0	\$0	\$400	\$0	\$1,600	\$0	\$2,000
CC1902-19	\$0	\$0	\$0	\$0	\$0	\$0	\$0	\$0	\$0	\$0	\$0	\$0	\$0	\$0	\$400	\$0	\$1,600	\$0	\$2,000
CC2001-20	\$0	\$0	\$0	\$0	\$0	\$0	\$6,400	\$0	\$0	\$0	\$0	\$0	\$0	\$0	\$1,600	\$0	\$0	\$0	\$8,000
GR1403-18A1	\$0	\$0	\$0	\$0	\$0	\$0	\$8,000	\$0	\$0	\$0	\$0	\$0	\$0	\$0	\$2,000	\$0	\$0	\$0	\$10,000
GR1501	\$16,000	\$0	\$0	\$0	\$0	\$0	\$0	\$0	\$0	\$0	\$0	\$4,000	\$0	\$0	\$0	\$0	\$0	\$0	\$20,000
GR1703	\$0	\$0	\$0	\$0	\$0	\$0	\$0	\$36,160	\$0	\$0	\$0	\$0	\$0	\$0	\$9,040	\$0	\$0	\$0	\$45,200
GR1707-17A6	\$0	\$0	\$0	\$0	\$0	\$0	\$0	\$0	\$0	\$0	\$0	\$1,000	\$0	\$0	\$0	\$0	\$0	\$0	\$1,000
GR1801-18	\$0	\$22,500	\$0	\$0	\$0	\$0	\$0	\$0	\$0	\$0	\$0	\$0	\$0	\$0	\$2,500	\$0	\$0	\$0	\$25,000
GR1804-18	\$0	\$0	\$0	\$0	\$0	\$0	\$537,600	\$0	\$0	\$0	\$0	\$0	\$0	\$0	\$134,400	\$0	\$0	\$0	\$672,000
GR1901-20A1	\$16,091,664	\$0	\$0	\$0	\$0	\$0	\$0	\$0	\$0	\$0	\$0	\$7,603,429	\$0	\$0	\$0	\$0	\$0	\$0	\$23,695,093
GR1902-20A1	\$2,935,796	\$0	\$0	\$0	\$0	\$0	\$0	\$0	\$0	\$0	\$0	\$733,949	\$0	\$0	\$0	\$0	\$0	\$0	\$3,669,745
GR1903-19	\$0	\$0	\$0	\$0	\$0	\$0	\$29,600	\$0	\$0	\$0	\$0	\$0	\$0	\$0	\$7,400	\$0	\$0	\$0	\$37,000
GR1905-19	\$0	\$0	\$224,100	\$0	\$0	\$0	\$0	\$0	\$0	\$0	\$0	\$0	\$0	\$0	\$24,900	\$0	\$0	\$0	\$249,000
GR1906-19	\$0	\$0	\$0	\$0	\$0	\$0	\$76,000	\$0	\$0	\$0	\$0	\$0	\$0	\$0	\$19,000	\$0	\$0	\$0	\$95,000
GR1907-19	\$0	\$0	\$0	\$0	\$0	\$0	\$0	\$0	\$0	\$0	\$0	\$0	\$0	\$0	\$1,000	\$0	\$4,000	\$0	\$5,000
GR1908-19	\$0	\$1,600	\$0	\$0	\$0	\$0	\$0	\$0	\$0	\$0	\$0	\$0	\$0	\$0	\$400	\$0	\$0	\$0	\$2,000
GR1909-19	\$0	\$0	\$27,200	\$0	\$0	\$0	\$0	\$0	\$0	\$0	\$0	\$0	\$0	\$0	\$6,800	\$0	\$0	\$0	\$34,000
GR1910-19	\$0	\$0	\$0	\$0	\$0	\$0	\$0	\$39,200	\$0	\$0	\$0	\$0	\$0	\$0	\$9,800	\$0	\$0	\$0	\$49,000
GR2001-20	\$0	\$0	\$0	\$0	\$0	\$0	\$0	\$0	\$0	\$0	\$0	\$0	\$0	\$0	\$128,400	\$0	\$513,600	\$0	\$642,000
GR2002-20	\$0	\$0	\$0	\$0	\$0	\$0	\$848,000	\$0	\$0	\$0	\$0	\$0	\$0	\$0	\$212,000	\$0	\$0	\$0	\$1,060,000
GR2003-20	\$0	\$0	\$0	\$0	\$0	\$0	\$3,200	\$0	\$0	\$0	\$0	\$0	\$0	\$0	\$500	\$0	\$0	\$0	\$4,000
GR2004-20	\$0	\$0	\$0	\$0	\$0	\$0	\$8,000	\$0	\$0	\$0	\$0	\$0	\$0	\$0	\$2,000	\$0	\$0	\$0	\$10,000
GR2005-20	\$0	\$0	\$0	\$0	\$0	\$0	\$0	\$0	\$0	\$0	\$0	\$0	\$0	\$0	\$8,800	\$0	\$35,200	\$0	\$44,000
GR2006-20	\$0	\$0	\$0	\$0	\$0	\$0	\$0	\$0	\$0	\$0	\$0	\$0	\$0	\$0	\$2,000	\$0	\$8,000	\$0	\$10,000
GR2007-20	\$0	\$0	\$0	\$0	\$0	\$0	\$8,000	\$0	\$0	\$0	\$0	\$0	\$0	\$0	\$2,000	\$0	\$0	\$0	\$10,000
GR2008-20	\$0	\$0	\$0	\$0	\$0	\$0	\$0	\$0	\$0	\$0	\$0	\$0	\$0	\$0	\$11,200	\$0	\$44,800	\$0	\$56,000
GR2009-20AM1	\$440,000	\$0	\$0	\$0	\$0	\$0	\$0	\$0	\$0	\$0	\$0	\$110,000	\$0	\$0	\$0	\$0	\$0	\$0	\$550,000
GR2010-20A1	\$0	\$9,000	\$0	\$0	\$0	\$0	\$0	\$0	\$0	\$0	\$0	\$0	\$0	\$0	\$1,000	\$0	\$0	\$0	\$10,000
GR2011-20A5	\$0	\$0	\$0	\$0	\$0	\$0	\$0	\$0	\$0	\$10,000	\$0	\$0	\$0	\$0	\$0	\$10,000	\$0	\$0	\$20,000
MO1405	\$0	\$0	\$0	\$0	\$0	\$0	\$0	\$0	\$0	\$0	\$0	\$0	\$0	\$0	\$15,000	\$0	\$0	\$0	\$15,000
MO1719-18A5	\$0	\$0	\$0	\$0	\$0	\$0	\$40,000	\$0	\$0	\$0	\$0	\$0	\$0	\$0	\$10,000	\$0	\$0	\$0	\$50,000
MO1720	\$0	\$0	\$0	\$0	\$0	\$0	\$4,000	\$0	\$0	\$0	\$0	\$0	\$0	\$0	\$1,000	\$0	\$0	\$0	\$5,000
MO1721-18A5	\$0	\$54,000	\$0	\$0	\$0	\$0	\$0	\$0	\$0	\$0	\$0	\$0	\$0	\$0	\$6,000	\$0	\$0	\$0	\$60,000
MO1722	\$0	\$0	\$0	\$0	\$0	\$0	\$40,000	\$0	\$0	\$0	\$0	\$0	\$0	\$0	\$10,000	\$0	\$0	\$0	\$50,000
MO1723	\$0	\$0	\$0	\$0	\$0	\$0	\$0	\$40,000	\$0	\$0	\$0	\$0	\$0	\$0	\$10,000	\$0	\$0	\$0	\$50,000
MO1803-18	\$0	\$182,700	\$0	\$0	\$0	\$0	\$0	\$0	\$0	\$0	\$0	\$0	\$0	\$0	\$20,300	\$0	\$0	\$0	\$203,000
MO1804-18	\$332,000	\$0	\$0	\$0	\$0	\$0	\$0	\$800	\$0	\$0	\$0	\$83,000	\$0	\$0	\$200	\$0	\$0	\$0	\$416,000
MO1903-19	\$0	\$245,700	\$0	\$0	\$0	\$0	\$0	\$0	\$0	\$0	\$0	\$0	\$0	\$0	\$27,300	\$0	\$0	\$0	\$273,000
MO1904-20A6	\$0	\$0	\$0	\$0	\$0	\$0	\$0	\$0	\$0	\$0	\$0	\$0	\$0	\$0	\$0	\$0	\$0	\$0	\$0
MO1905-19	\$0	\$0	\$0	\$0	\$0	\$0	\$0	\$0	\$0	\$0	\$0	\$0	\$0	\$0	\$35,000	\$0	\$0	\$0	\$35,000
MO2001-20	\$0	\$0	\$0	\$0	\$0	\$0	\$0	\$0	\$0	\$0	\$0	\$0	\$0	\$0	\$21,900	\$0	\$197,100	\$0	\$219,000
MO2002-20	\$0	\$775,800	\$0	\$0	\$0	\$0	\$0	\$0	\$0	\$0	\$0	\$0	\$0	\$0	\$86,200	\$0	\$0	\$0	\$862,000
MO2003-20	\$0	\$0	\$0	\$0	\$0	\$0	\$356,800	\$0	\$0	\$0	\$0	\$0	\$0	\$0	\$89,200	\$0	\$0	\$0	\$446,000
MO2004-20	\$0	\$7,200	\$0	\$0	\$0	\$0	\$0	\$0	\$0	\$0	\$0	\$0	\$0	\$0	\$800	\$0	\$0	\$0	\$8,000
MO2005-20	\$0	\$0	\$0	\$0	\$0	\$0	\$0	\$0	\$0	\$0	\$0	\$0	\$0	\$0	\$181,200	\$0	\$724,800	\$0	\$906,000
MO2006-20	\$0	\$0	\$0	\$0	\$0	\$0	\$0	\$8,000	\$0	\$0	\$0	\$0	\$0	\$0	\$2,000	\$0	\$0	\$0	\$10,000
MO2007-20	\$0	\$0	\$0	\$0	\$0	\$0	\$0	\$0	\$0	\$0	\$0	\$0	\$0	\$0	\$26,000	\$0	\$104,000	\$0	\$130,000
MO2008-20	\$0	\$900	\$0	\$0	\$0	\$0	\$0	\$0	\$0	\$0	\$0	\$0	\$0	\$0	\$100	\$0	\$0	\$0	\$1,000
MO2010-20	\$0	\$0	\$0	\$0	\$0	\$0	\$0	\$0	\$0	\$0	\$0	\$0	\$0	\$0	\$10,000	\$0	\$90,000	\$0	\$100,000
MO2101-18	\$0	\$0	\$0	\$0	\$0	\$0	\$0	\$572,800	\$0	\$0	\$0	\$0	\$0	\$0	\$143,400	\$0	\$800	\$0	\$717,000
MO2103-19	\$181,800	\$0	\$0	\$0	\$0	\$0	\$0	\$0	\$0	\$0	\$0	\$0	\$0	\$0	\$20,200	\$0	\$0	\$0	\$202,000
NX1701-20A2	\$0	\$0	\$0	\$0	\$0	\$0	\$204,364	\$0	\$0	\$0	\$0	\$5,000	\$0	\$0	\$46,091	\$0	\$0	\$0	\$255,455
NX1704	\$0	\$0	\$0	\$0	\$0	\$0	\$1,600	\$0	\$0	\$0	\$0	\$0	\$0	\$0	\$400	\$0	\$0	\$0	\$2,000
NX1803-18A2	\$584,000	\$0	\$0	\$0	\$0	\$0	\$424,000	\$0	\$0	\$0	\$0	\$145,500	\$0	\$0	\$106,500	\$0	\$0	\$0	\$1,260,000
NX1901-19	\$0	\$0	\$0	\$0	\$0	\$0	\$456,800	\$0	\$0	\$0	\$0	\$0	\$0	\$0	\$114,200	\$0	\$0	\$0	\$571,000
NX1902-19	\$0	\$0	\$0	\$0	\$0	\$0	\$71,200	\$0	\$0	\$0	\$0	\$0	\$0	\$0	\$17,800	\$0	\$0	\$0	\$89,000
NX2001-20	\$0	\$0	\$0	\$0	\$0	\$0	\$0	\$0	\$0	\$0	\$0	\$0	\$0	\$0	\$120,000	\$0	\$480,000	\$0	\$600,000
OK1401-18AM4	\$1,512,439	\$0	\$0	\$0	\$0	\$0	\$0	\$1,372,151	\$0	\$0	\$0	\$378,111	\$0	\$0	\$343,037	\$0	\$0	\$0	\$3,605,738
OK1701-20A2	\$0	\$835,000	\$0	\$0	\$0	\$0	\$0	\$2,533,170	\$0	\$0	\$0	\$374,950	\$0	\$0	\$935,780	\$0	\$0	\$0	\$4,678,900
OK1802-19A3	\$800,000	\$0	\$0	\$0	\$0	\$350,151	\$0	\$0	\$0	\$0	\$0	\$595,814	\$0	\$0	\$0	\$0	\$123,499	\$0	\$2,610,457
OK1803	\$105,200	\$0	\$0	\$0	\$0	\$0	\$2,674,800	\$0	\$0	\$0	\$0	\$0	\$0	\$0	\$668,700	\$0	\$0	\$0	\$3,475,000
OK1901-19	\$0	\$0	\$0	\$0	\$0	\$0	\$25,600	\$0	\$0	\$0	\$0	\$0	\$0	\$0	\$6,400	\$0	\$0	\$0	\$32,000
OT1901-19A5	\$210,000	\$0	\$0	\$0	\$0	\$0	\$0	\$0	\$0	\$0	\$0	\$52,500	\$0	\$0	\$0	\$0	\$0	\$0	\$262,500
RG0901-18A1	\$0	\$748,800	\$0	\$0	\$0	\$0	\$0	\$0	\$0	\$0	\$0	\$0	\$0	\$0	\$83,200	\$0			

Roadways

PROJECT	FHWA (STBG-U)	FHWA (SAFETY)	FHWA (BRIDGE)	FHWA (VM)	FHWA (130)	FHWA (BRO)	FHWA (NHPP)	FHWA (STBG)	FHWA(BUILD)	FRA (CRISI)	FEMA	State			MODOT	MODOT-GCSA	MODOT-AC	SEMA	TOTAL
												LOCAL	LOCAL-AC	OTHER					
2020 Continued																			
SP1419-18A1	\$0	\$0	\$0	\$9,000	\$0	\$0	\$0	\$0	\$0	\$0	\$0	\$0	\$0	\$0	\$1,000	\$0	\$0	\$0	\$10,000
SP1708	\$0	\$0	\$0	\$0	\$0	\$0	\$0	\$0	\$0	\$0	\$0	\$0	\$0	\$0	\$200	\$0	\$0	\$0	\$1,000
SP1709	\$0	\$0	\$0	\$0	\$0	\$0	\$16,000	\$0	\$0	\$0	\$0	\$0	\$0	\$0	\$4,000	\$0	\$0	\$0	\$20,000
SP1710	\$0	\$0	\$0	\$0	\$0	\$0	\$23,200	\$0	\$0	\$0	\$0	\$0	\$0	\$0	\$5,800	\$0	\$0	\$0	\$29,000
SP1801-18	\$0	\$0	\$0	\$0	\$0	\$0	\$1,600	\$0	\$0	\$0	\$0	\$0	\$0	\$0	\$400	\$0	\$0	\$0	\$2,000
SP1802-18	\$0	\$0	\$0	\$0	\$0	\$0	\$1,600	\$0	\$0	\$0	\$0	\$0	\$0	\$0	\$400	\$0	\$0	\$0	\$2,000
SP1805-18	\$0	\$0	\$1,467,000	\$0	\$0	\$0	\$0	\$0	\$0	\$0	\$0	\$0	\$0	\$0	\$1,000	\$0	\$0	\$0	\$1,630,000
SP1809-18	\$0	\$0	\$0	\$0	\$0	\$0	\$1,448,600	\$0	\$0	\$0	\$0	\$0	\$0	\$0	\$362,400	\$0	\$0	\$0	\$1,812,000
SP1811-18	\$0	\$2,000	\$0	\$0	\$0	\$0	\$0	\$0	\$0	\$0	\$0	\$0	\$0	\$0	\$0	\$0	\$0	\$0	\$2,000
SP1812-18	\$0	\$2,000	\$0	\$0	\$0	\$0	\$0	\$0	\$0	\$0	\$0	\$0	\$0	\$0	\$0	\$0	\$0	\$0	\$2,000
SP1815-20A5	\$0	\$0	\$0	\$0	\$0	\$0	\$28,000	\$0	\$0	\$0	\$0	\$0	\$0	\$0	\$7,000	\$0	\$0	\$0	\$35,000
SP1816-20A6	\$0	\$0	\$0	\$0	\$0	\$0	\$1,600	\$0	\$0	\$0	\$0	\$0	\$0	\$0	\$400	\$0	\$0	\$0	\$2,000
SP1817-20A6	\$0	\$0	\$0	\$0	\$0	\$0	\$1,600	\$0	\$0	\$0	\$0	\$0	\$0	\$0	\$400	\$0	\$0	\$0	\$2,000
SP1903-19	\$0	\$0	\$0	\$0	\$0	\$0	\$8,000	\$0	\$0	\$0	\$0	\$0	\$0	\$0	\$2,000	\$0	\$0	\$0	\$10,000
SP1904-19	\$0	\$0	\$0	\$0	\$0	\$0	\$14,400	\$0	\$0	\$0	\$0	\$0	\$0	\$0	\$3,600	\$0	\$0	\$0	\$18,000
SP1906-19	\$0	\$0	\$0	\$0	\$0	\$0	\$0	\$0	\$0	\$0	\$0	\$0	\$0	\$0	\$400	\$0	\$1,600	\$0	\$2,000
SP1907-19	\$0	\$995,000	\$0	\$0	\$0	\$0	\$16,865,800	\$0	\$0	\$0	\$0	\$0	\$0	\$0	\$4,465,200	\$0	\$0	\$0	\$22,326,000
SP1908-19A2	\$0	\$0	\$0	\$0	\$0	\$0	\$8,000	\$0	\$0	\$0	\$0	\$0	\$0	\$0	\$2,000	\$0	\$0	\$0	\$10,000
SP1909-19A2	\$0	\$0	\$0	\$0	\$0	\$0	\$40,000	\$0	\$0	\$0	\$0	\$0	\$0	\$0	\$10,000	\$0	\$0	\$0	\$50,000
SP1910-19A2	\$0	\$0	\$0	\$0	\$0	\$0	\$4,000	\$0	\$0	\$0	\$0	\$0	\$0	\$0	\$1,000	\$0	\$0	\$0	\$5,000
SP1911-19A2	\$0	\$0	\$0	\$0	\$0	\$0	\$1,600	\$0	\$0	\$0	\$0	\$0	\$0	\$0	\$400	\$0	\$0	\$0	\$2,000
SP1912-19A5	\$0	\$0	\$0	\$0	\$46,000	\$0	\$0	\$0	\$0	\$0	\$0	\$0	\$0	\$0	\$0	\$6,000	\$0	\$0	\$52,000
SP2002-20	\$0	\$0	\$0	\$0	\$0	\$0	\$1,600	\$0	\$0	\$0	\$0	\$0	\$0	\$0	\$400	\$0	\$0	\$0	\$2,000
SP2003-20	\$0	\$0	\$0	\$0	\$0	\$0	\$0	\$504,000	\$0	\$0	\$0	\$0	\$0	\$0	\$126,000	\$0	\$0	\$0	\$630,000
SP2004-20	\$0	\$0	\$0	\$0	\$0	\$0	\$1,221,600	\$0	\$0	\$0	\$0	\$0	\$0	\$0	\$305,400	\$0	\$0	\$0	\$1,527,000
SP2005-20A3	\$0	\$0	\$0	\$0	\$0	\$0	\$807,200												

FY 2021 continued on next page

FINANCIAL SUMMARY

Roadways

YEARLY SUMMARY

PROJECT	FHWA (STBG-U)	FHWA (SAFETY)	FHWA (BRIDGE)	FHWA (UM)	FHWA (130)	Federal	FHWA (BRO)	FHWA (NHPP)	FHWA (STBG)	FHWA(BUILD)	FRA (CRISI)	FEMA	LOCAL	Local	OTHER	MoDOT	MoDOT-GCSA	MoDOT-AC	SEMA	TOTAL
2021 Continued																				
MO2006-20	\$0	\$0	\$0	\$0	\$0	\$0	\$0	\$0	\$40,000	\$0	\$0	\$0	\$0	\$0	\$0	\$10,000	\$0	\$0	\$0	\$50,000
MO2009-20	\$0	\$183,600	\$0	\$0	\$0	\$0	\$0	\$0	\$0	\$0	\$0	\$0	\$0	\$0	\$0	\$20,400	\$0	\$0	\$0	\$204,000
MO2010-20	\$0	\$0	\$0	\$0	\$0	\$0	\$0	\$0	\$0	\$0	\$0	\$0	\$0	\$0	\$0	\$10,000	\$0	\$90,000	\$0	\$100,000
MO2101-18	\$332,000	\$0	\$0	\$0	\$0	\$0	\$0	\$0	\$0	\$0	\$0	\$0	\$83,000	\$0	\$0	\$0	\$0	\$0	\$0	\$415,000
MO2104-20A5	\$0	\$0	\$0	\$0	\$0	\$0	\$0	\$0	\$515,200	\$0	\$0	\$0	\$0	\$0	\$0	\$128,800	\$0	\$0	\$0	\$644,000
MO2105-20	\$0	\$0	\$0	\$0	\$0	\$0	\$0	\$0	\$0	\$0	\$0	\$0	\$0	\$0	\$0	\$22,500	\$0	\$202,500	\$0	\$225,000
NX1701-20A2	\$202,270	\$0	\$0	\$0	\$0	\$0	\$0	\$5,614,803	\$0	\$0	\$0	\$0	\$99,446	\$0	\$0	\$1,354,822	\$0	\$0	\$0	\$7,271,341
NX1704	\$0	\$0	\$0	\$0	\$0	\$0	\$0	\$1,600	\$0	\$0	\$0	\$0	\$0	\$0	\$0	\$400	\$0	\$0	\$0	\$2,000
NX2101-20A5	\$1,873,146	\$0	\$0	\$0	\$0	\$0	\$0	\$0	\$0	\$0	\$0	\$0	\$468,296	\$0	\$0	\$0	\$0	\$0	\$0	\$2,341,432
NX2102-20A5	\$437,506	\$0	\$0	\$0	\$0	\$0	\$0	\$0	\$0	\$0	\$0	\$0	\$109,376	\$0	\$0	\$0	\$0	\$0	\$0	\$546,882
OK1901-19	\$0	\$0	\$0	\$0	\$0	\$0	\$0	\$1,637,600	\$0	\$0	\$0	\$0	\$0	\$0	\$0	\$409,400	\$0	\$0	\$0	\$2,047,000
OK2101-20A5	\$0	\$0	\$0	\$0	\$0	\$0	\$0	\$0	\$0	\$0	\$0	\$0	\$0	\$0	\$0	\$112,000	\$0	\$448,000	\$0	\$560,000
OT1901-19A5	\$220,500	\$0	\$0	\$0	\$0	\$0	\$0	\$0	\$0	\$0	\$0	\$0	\$55,125	\$0	\$0	\$0	\$0	\$0	\$0	\$275,625
RG0901-18A1	\$0	\$1,618,200	\$0	\$0	\$0	\$0	\$0	\$0	\$0	\$0	\$0	\$0	\$0	\$0	\$0	\$179,800	\$0	\$0	\$0	\$1,798,000
RP1701	\$0	\$0	\$0	\$0	\$0	\$0	\$0	\$8,000	\$0	\$0	\$0	\$0	\$0	\$0	\$0	\$2,000	\$0	\$0	\$0	\$10,000
RP1703-17A3	\$0	\$0	\$0	\$0	\$0	\$0	\$0	\$0	\$1,600	\$0	\$0	\$0	\$0	\$0	\$0	\$400	\$0	\$0	\$0	\$2,000
RP1704-17A3	\$0	\$0	\$0	\$0	\$0	\$0	\$0	\$0	\$0	\$0	\$0	\$0	\$0	\$0	\$0	\$400	\$0	\$1,600	\$0	\$2,000
RP2001-20A5	\$0	\$0	\$0	\$0	\$0	\$0	\$0	\$0	\$0	\$0	\$0	\$0	\$0	\$0	\$0	\$4,000	\$0	\$81,600	\$0	\$85,600
SP1405-18A1	\$0	\$0	\$0	\$0	\$0	\$0	\$0	\$0	\$0	\$0	\$0	\$0	\$0	\$0	\$0	\$400	\$0	\$0	\$0	\$2,000
SP1413-19	\$0	\$0	\$0	\$0	\$0	\$0	\$0	\$1,600	\$0	\$0	\$0	\$0	\$0	\$0	\$0	\$400	\$0	\$1,600	\$0	\$2,000
SP1419-18A1	\$0	\$0	\$0	\$0	\$9,000	\$0	\$0	\$0	\$0	\$0	\$0	\$0	\$0	\$0	\$0	\$1,000	\$0	\$0	\$0	\$10,000
SP1708	\$0	\$0	\$0	\$0	\$0	\$0	\$0	\$6,400	\$0	\$0	\$0	\$0	\$0	\$0	\$0	\$1,600	\$0	\$0	\$0	\$8,000
SP1709	\$0	\$0	\$0	\$0	\$0	\$0	\$0	\$16,000	\$0	\$0	\$0	\$0	\$0	\$0	\$0	\$4,000	\$0	\$0	\$0	\$20,000
SP1710	\$0	\$0	\$0	\$0	\$0	\$0	\$0	\$860,000	\$0	\$0	\$0	\$0	\$0	\$0	\$0	\$215,000	\$0	\$0	\$0	\$1,075,000
SP1802-18	\$0	\$0	\$0	\$0	\$0	\$0	\$0	\$1,600	\$0	\$0	\$0	\$0	\$0	\$0	\$0	\$400	\$0	\$0	\$0	\$2,000
SP1811-18	\$0	\$2,000	\$0	\$0	\$0	\$0	\$0	\$0	\$0	\$0	\$0	\$0	\$0	\$0	\$0	\$0	\$0	\$0	\$0	\$2,000
SP1812-18	\$0	\$2,000	\$0	\$0	\$0	\$0	\$0	\$0	\$0	\$0	\$0	\$0	\$0	\$0	\$0	\$0	\$0	\$0	\$0	\$2,000
SP1815-20A5	\$46,000	\$0	\$0	\$0	\$0	\$0	\$0	\$74,000	\$0	\$0	\$0	\$0	\$11,500	\$0	\$0	\$18,500	\$0	\$0	\$0	\$150,000
SP1816-20A6	\$0	\$0	\$0	\$0	\$0	\$0	\$0	\$111,200	\$0	\$0	\$0	\$0	\$0	\$0	\$0	\$27,800	\$0	\$0	\$0	\$139,000
SP1817-20A5	\$0	\$0	\$0	\$0	\$0	\$0	\$0	\$40,000	\$0	\$0	\$0	\$0	\$0	\$0	\$0	\$10,000	\$0	\$0	\$0	\$50,000
SP1818-20A5	\$1,160,800	\$0	\$0	\$0	\$0	\$0	\$0	\$1,883,200	\$0	\$0	\$0	\$0	\$573,200	\$0	\$0	\$470,800	\$0	\$0	\$0	\$4,088,000
SP1902-20A5	\$1,120,000	\$0	\$0	\$0	\$0	\$0	\$0	\$0	\$0	\$0	\$0	\$0	\$280,000	\$0	\$0	\$0	\$0	\$0	\$0	\$1,400,000
SP1903-19	\$0	\$0	\$0	\$0	\$0	\$0	\$0	\$636,800	\$0	\$0	\$0	\$0	\$0	\$0	\$0	\$159,200	\$0	\$0	\$0	\$796,000
SP1904-19	\$0	\$0	\$0	\$0	\$0	\$0	\$0	\$1,016,800	\$0	\$0	\$0	\$0	\$0	\$0	\$0	\$254,200	\$0	\$0	\$0	\$1,271,000
SP1906-19	\$0	\$0	\$0	\$0	\$0	\$0	\$0	\$0	\$0	\$0	\$0	\$0	\$0	\$0	\$0	\$400	\$0	\$1,600	\$0	\$2,000
SP1908-19A2	\$0	\$0	\$0	\$0	\$0	\$0	\$0	\$303,200	\$0	\$0	\$0	\$0	\$0	\$0	\$0	\$75,800	\$0	\$0	\$0	\$379,000
SP1909-19A2	\$0	\$0	\$0	\$0	\$0	\$0	\$0	\$1,600	\$0	\$0	\$0	\$0	\$0	\$0	\$0	\$400	\$0	\$0	\$0	\$2,000
SP1910-19A2	\$0	\$0	\$0	\$0	\$0	\$0	\$0	\$1,600	\$0	\$0	\$0	\$0	\$0	\$0	\$0	\$400	\$0	\$0	\$0	\$2,000
SP1911-19A2	\$0	\$0	\$0	\$0	\$0	\$0	\$0	\$1,600	\$0	\$0	\$0	\$0	\$0	\$0	\$0	\$400	\$0	\$0	\$0	\$2,000
SP2002-20	\$0	\$0	\$0	\$0	\$0	\$0	\$0	\$1,600	\$0	\$0	\$0	\$0	\$0	\$0	\$0	\$400	\$0	\$0	\$0	\$2,000
SP2003-20	\$0	\$0	\$0	\$0	\$0	\$0	\$0	\$0	\$2,848,000	\$0	\$0	\$0	\$0	\$0	\$0	\$712,000	\$0	\$0	\$0	\$3,560,000
SP2006-20	\$0	\$0	\$0	\$0	\$0	\$0	\$0	\$0	\$0	\$0	\$0	\$0	\$0	\$0	\$0	\$2,000	\$0	\$8,000	\$0	\$10,000
SP2007-20A5	\$0	\$0	\$0	\$0	\$0	\$0	\$0	\$0	\$0	\$0	\$0	\$0	\$0	\$0	\$0	\$130,000	\$0	\$520,000	\$0	\$650,000
SP2008-20	\$0	\$0	\$0	\$0	\$0	\$0	\$0	\$11,200	\$0	\$0	\$0	\$0	\$0	\$0	\$0	\$2,800	\$0	\$0	\$0	\$14,000
SP2009-20	\$0	\$0	\$0	\$0	\$0	\$0	\$0	\$5,600	\$0	\$0	\$0	\$0	\$0	\$0	\$0	\$1,400	\$0	\$0	\$0	\$7,000
SP2013-20	\$0	\$0	\$0	\$0	\$0	\$0	\$0	\$1,600	\$0	\$0	\$0	\$0	\$0	\$0	\$0	\$400	\$0	\$0	\$0	\$2,000
SP2015-20A5	\$0	\$0	\$0	\$0	\$0	\$0	\$0	\$0	\$0	\$19,278,422	\$0	\$0	\$4,819,606	\$0	\$0	\$0	\$0	\$0	\$0	\$24,098,028
SP2101-20A6	\$0	\$0	\$0	\$0	\$0	\$0	\$0	\$0	\$0	\$0	\$0	\$0	\$0	\$0	\$0	\$8,000	\$0	\$0	\$0	\$8,000
SP2102-20A5	\$0	\$0	\$0	\$0	\$0	\$0	\$0	\$0	\$0	\$0	\$0	\$0	\$0	\$0	\$0	\$1,600	\$0	\$6,400	\$0	\$8,000
SP2103-20A5	\$0	\$0	\$0	\$0	\$0	\$0	\$0	\$0	\$0	\$0	\$0	\$0	\$0	\$0	\$0	\$0	\$0	\$0	\$0	\$0
SP2114-20A5	\$0	\$0	\$0	\$0	\$0	\$0	\$0	\$0	\$0	\$0	\$0	\$0	\$3,500,000	\$0	\$0	\$1,502,000	\$0	\$0	\$0	\$5,002,000
SUBTOTAL	\$6,432,222	\$2,345,800	\$1,382,400	\$3,851,100	\$440,000	\$0	\$16,120,003	\$4,556,800	\$19,278,422	\$25,500	\$0	\$10,260,539	\$0	\$0	\$8,426,322	\$135,500	\$3,137,300	\$0	\$76,391,908	
2022																				
CC2001	\$0	\$0	\$0	\$0	\$0	\$0	\$0	\$0	\$8,000	\$0	\$0	\$0	\$0	\$0	\$0	\$2,000	\$0	\$0	\$0	\$10,000
CC1102	\$0	\$0	\$0	\$0	\$0	\$0	\$0	\$1,600	\$0	\$0	\$0	\$0	\$0	\$0	\$0	\$400	\$0	\$0	\$0	\$2,000
CC1802	\$0	\$0	\$0	\$0	\$0	\$0	\$0	\$3,104,800	\$0	\$0	\$0	\$0	\$0	\$0	\$0	\$776,200	\$0	\$0	\$0	\$3,881,000
CC1803-18	\$0	\$1,800	\$0	\$0	\$0	\$0	\$0	\$0	\$0	\$0	\$0	\$0	\$0	\$0	\$0	\$200	\$0	\$0	\$0	\$2,000
CC1901-19	\$0	\$0	\$0	\$0	\$0	\$0	\$0	\$0	\$0	\$0	\$0	\$0	\$0	\$0	\$0	\$400	\$0	\$1,600	\$0	\$2,000
CC1902-19	\$0	\$0	\$0	\$0	\$0	\$0	\$0	\$0	\$0	\$0	\$0	\$0	\$0	\$0	\$0	\$400	\$0	\$1,600	\$0	\$2,000
CC2101-20A5	\$0	\$238,500	\$0	\$0	\$0	\$0	\$0	\$0	\$0	\$0	\$0	\$0	\$0	\$0	\$0	\$26,500	\$0	\$0	\$0	\$265,000
GR1707-17A6	\$0	\$0	\$0	\$0	\$0	\$0	\$0	\$0	\$0	\$0	\$0	\$0	\$1,000	\$0	\$0	\$0	\$0	\$0	\$0	\$1,000
GR1801-18	\$0	\$1,800	\$0	\$0	\$0	\$0	\$0	\$0	\$0	\$0	\$0	\$0	\$0	\$0	\$0	\$200	\$0	\$0	\$0	\$2,000
GR1902-19	\$3,246,479	\$0	\$0	\$0	\$0	\$0	\$0	\$0	\$0	\$0	\$0	\$0	\$1,253,521	\$0	\$0	\$0	\$0	\$0	\$0	\$4,500,000
GR1907-19	\$0	\$0	\$0	\$0	\$0	\$0	\$0	\$0	\$0	\$0	\$0	\$0	\$0	\$0	\$0	\$418,000	\$0	\$1,672,000	\$0	\$2,090,000
GR2003-20	\$0	\$0	\$0	\$0	\$0	\$0	\$0	\$3,200	\$0	\$0	\$0	\$0	\$0	\$0	\$0	\$800	\$0	\$0	\$0	\$4,000
GR2004-20	\$0	\$0	\$0	\$0	\$0	\$0	\$0	\$1,307,200	\$0	\$0	\$0	\$0	\$0	\$0	\$0	\$326,800	\$0	\$0	\$0	\$1,634,000
GR2007-20	\$0	\$0	\$0	\$0	\$0	\$0	\$0	\$20,000	\$0	\$0	\$0	\$0	\$0	\$0	\$0	\$5,000	\$0	\$0	\$0	\$25,000
GR2010-20A1	\$0	\$9,000	\$0	\$0	\$0	\$0	\$0	\$0	\$0	\$0	\$0	\$0	\$0	\$0	\$0	\$1,000	\$0	\$0	\$0	\$10,000
GR2011-20A5	\$0	\$0	\$0	\$0	\$0	\$0	\$0	\$0	\$0	\$0	\$562,000	\$0	\$0	\$0	\$0	\$0	\$562,000	\$0	\$0	\$1,124,000
MO1405	\$0	\$0	\$0	\$0	\$0	\$0	\$0	\$0	\$0	\$0	\$0	\$0	\$0	\$0	\$0	\$15,000	\$0	\$0	\$0	\$15,000
MO1719-18A5	\$0	\$0	\$0	\$0	\$0	\$0	\$0	\$40,000	\$0	\$0	\$0	\$0	\$0	\$0	\$0	\$10,000	\$0	\$0	\$0	\$50,000
MO1721-18A5	\$0	\$54,000	\$0	\$0	\$0	\$0	\$0	\$0	\$0	\$0	\$0	\$0	\$0	\$0	\$0	\$6,000	\$0	\$0	\$0	\$60,000
MO1722	\$0	\$0	\$0	\$0	\$0	\$0	\$0	\$40,000	\$0	\$0	\$0	\$0	\$0	\$0	\$0	\$10,000	\$0	\$0	\$0	\$50,000
MO1723	\$0	\$0	\$0	\$0	\$0	\$0	\$0	\$0	\$40,000	\$0	\$0	\$0	\$0	\$0	\$0	\$10,000	\$0	\$0	\$0	\$50,000
MO2004-20A6	\$0	\$0	\$0	\$0	\$0	\$0	\$0	\$0	\$0	\$0	\$0	\$0	\$0	\$0	\$0	\$0	\$0	\$0	\$0	\$0
MO1905-19	\$0	\$0	\$0	\$0	\$0	\$0	\$0	\$0	\$0	\$0	\$0	\$0	\$0	\$0	\$0	\$23,500	\$0	\$0	\$0	\$23,500
MO2006-20	\$0	\$0	\$0	\$0	\$0	\$0	\$0	\$0	\$569,600	\$0	\$0	\$0	\$0	\$0	\$0	\$142,400	\$0	\$0	\$0	\$712,000
MO2104-20A5	\$340,000	\$0																		

FINANCIAL SUMMARY

Roadways

YEARLY SUMMARY

PROJECT	FHWA (STBG-U)	FHWA (SAFETY)	FHWA (BRIDGE)	FHWA (IM)	FHWA (130)	Federal	FHWA (BRO)	FHWA (NHPP)	FHWA (STBG)	FHWA(BUILD)	FRA (CRISI)	FEMA	Local			State			SEMA	TOTAL	
													LOCAL	LOCAL-AC	OTHER	MoDOT	MoDOT-GCSA	MoDOT-AC			
2022 Continued																					
SP1812-18	\$0	\$2,000	\$0	\$0	\$0	\$0	\$0	\$0	\$0	\$0	\$0	\$0	\$0	\$0	\$0	\$0	\$0	\$0	\$0	\$2,000	
SP1815-20A5	\$999,803	\$0	\$0	\$0	\$0	\$0	\$0	\$723,397	\$0	\$0	\$0	\$0	\$249,951	\$0	\$0	\$180,849	\$0	\$0	\$0	\$2,154,000	
SP1816-20A6	\$61,828	\$0	\$0	\$0	\$0	\$0	\$0	\$147,772	\$0	\$0	\$0	\$0	\$15,457	\$0	\$0	\$36,943	\$0	\$0	\$0	\$262,000	
SP1817-20A6	\$0	\$0	\$0	\$0	\$0	\$0	\$0	\$253,855	\$0	\$0	\$0	\$0	\$0	\$0	\$0	\$63,464	\$0	\$0	\$0	\$317,319	
SP1906-19	\$0	\$0	\$0	\$0	\$0	\$0	\$0	\$0	\$0	\$0	\$0	\$0	\$0	\$0	\$0	\$800	\$0	\$3,200	\$0	\$4,000	
SP1908-19A2	\$0	\$0	\$0	\$0	\$0	\$0	\$0	\$2,782,400	\$0	\$0	\$0	\$0	\$0	\$0	\$0	\$695,600	\$0	\$0	\$0	\$3,478,000	
SP1909-19A2	\$0	\$0	\$0	\$0	\$0	\$0	\$0	\$1,600	\$0	\$0	\$0	\$0	\$0	\$0	\$0	\$400	\$0	\$0	\$0	\$2,000	
SP1910-19A2	\$0	\$0	\$0	\$0	\$0	\$0	\$0	\$1,600	\$0	\$0	\$0	\$0	\$0	\$0	\$0	\$400	\$0	\$0	\$0	\$2,000	
SP1911-19A2	\$0	\$0	\$0	\$0	\$0	\$0	\$0	\$1,600	\$0	\$0	\$0	\$0	\$0	\$0	\$0	\$400	\$0	\$0	\$0	\$2,000	
SP2002-20	\$0	\$0	\$0	\$0	\$0	\$0	\$0	\$1,600	\$0	\$0	\$0	\$0	\$0	\$0	\$0	\$400	\$0	\$0	\$0	\$2,000	
SP2006-20	\$0	\$0	\$0	\$0	\$0	\$0	\$0	\$0	\$0	\$0	\$0	\$0	\$0	\$0	\$0	\$297,800	\$0	\$1,191,200	\$0	\$1,489,000	
SP2008-20	\$0	\$0	\$0	\$0	\$0	\$0	\$0	\$1,423,200	\$0	\$0	\$0	\$0	\$0	\$0	\$0	\$355,800	\$0	\$0	\$0	\$1,779,000	
SP2009-20	\$0	\$0	\$0	\$0	\$0	\$0	\$0	\$780,000	\$0	\$0	\$0	\$0	\$0	\$0	\$0	\$195,000	\$0	\$0	\$0	\$975,000	
SP2013-20	\$0	\$0	\$0	\$0	\$0	\$0	\$0	\$1,600	\$0	\$0	\$0	\$0	\$0	\$0	\$0	\$400	\$0	\$0	\$0	\$2,000	
SP2101-20A6	\$0	\$0	\$0	\$0	\$0	\$0	\$0	\$0	\$0	\$0	\$0	\$0	\$0	\$0	\$0	\$250,033	\$0	\$0	\$0	\$250,033	
SP2102-20A5	\$0	\$0	\$0	\$0	\$0	\$0	\$0	\$0	\$0	\$0	\$0	\$0	\$0	\$0	\$0	\$55,262	\$0	\$221,050	\$0	\$276,312	
SP2103-20A5	\$0	\$0	\$0	\$0	\$0	\$0	\$0	\$0	\$0	\$0	\$0	\$0	\$0	\$0	\$0	\$615,216	\$0	\$0	\$0	\$615,216	
SP2201-20	\$0	\$0	\$0	\$0	\$800,000	\$0	\$0	\$0	\$0	\$0	\$0	\$0	\$0	\$0	\$0	\$0	\$200,000	\$0	\$0	\$1,000,000	
SP2202-20A5	\$1,232,000	\$0	\$0	\$0	\$0	\$0	\$0	\$0	\$0	\$0	\$0	\$0	\$308,000	\$0	\$0	\$0	\$0	\$0	\$0	\$1,540,000	
SUBTOTAL	\$7,073,334	\$13,504,000	\$0	\$0	\$800,000	\$0	\$11,388,224	\$619,200	\$0	\$562,000	\$0	\$2,211,235	\$0	\$2,211,235	\$0	\$0	\$6,213,067	\$762,000	\$3,229,850	\$0	\$46,362,910
2023																					
CC0901	\$0	\$0	\$0	\$0	\$0	\$0	\$0	\$0	\$8,000	\$0	\$0	\$0	\$0	\$0	\$0	\$2,000	\$0	\$0	\$0	\$10,000	
CC1102	\$0	\$0	\$0	\$0	\$0	\$0	\$0	\$1,600	\$0	\$0	\$0	\$0	\$0	\$0	\$0	\$400	\$0	\$0	\$0	\$2,000	
CC1802	\$0	\$0	\$0	\$0	\$0	\$0	\$0	\$8,268,800	\$0	\$0	\$0	\$0	\$0	\$0	\$0	\$2,067,200	\$0	\$0	\$0	\$10,336,000	
CC1901-19	\$0	\$0	\$0	\$0	\$0	\$0	\$0	\$0	\$0	\$0	\$0	\$0	\$0	\$0	\$0	\$400	\$0	\$1,600	\$0	\$2,000	
CC1902-19	\$0	\$0	\$0	\$0	\$0	\$0	\$0	\$0	\$0	\$0	\$0	\$0	\$0	\$0	\$0	\$400	\$0	\$1,600	\$0	\$2,000	
GR1502	\$0	\$0	\$0	\$0	\$0	\$0	\$0	\$0	\$0	\$0	\$0	\$0	\$1,000,000	\$0	\$0	\$0	\$0	\$0	\$0	\$1,000,000	
GR1707-17A6	\$0	\$0	\$0	\$0	\$0	\$0	\$0	\$0	\$0	\$0	\$0	\$0	\$1,000	\$0	\$0	\$0	\$0	\$0	\$0	\$1,000	
GR1801-18	\$0	\$1,800	\$0	\$0	\$0	\$0	\$0	\$0	\$0	\$0	\$0	\$0	\$0	\$0	\$0	\$200	\$0	\$0	\$0	\$2,000	
GR1902-19	\$0	\$0	\$0	\$0	\$0	\$0	\$0	\$0	\$0	\$0	\$0	\$0	\$4,000,000	\$0	\$0	\$0	\$0	\$0	\$0	\$4,000,000	
GR2003-20	\$0	\$0	\$0	\$0	\$0	\$0	\$0	\$16,000	\$0	\$0	\$0	\$0	\$0	\$0	\$0	\$4,000	\$0	\$0	\$0	\$20,000	
GR2007-20	\$0	\$0	\$0	\$0	\$0	\$0	\$0	\$1,984,000	\$0	\$0	\$0	\$0	\$0	\$0	\$0	\$496,000	\$0	\$0	\$0	\$2,480,000	
GR2010-20A1	\$0	\$9,000	\$0	\$0	\$0	\$0	\$0	\$0	\$0	\$0	\$0	\$0	\$0	\$0	\$0	\$1,000	\$0	\$0	\$0	\$10,000	
MO1405	\$0	\$0	\$0	\$0	\$0	\$0	\$0	\$0	\$0	\$0	\$0	\$0	\$0	\$0	\$0	\$15,000	\$0	\$0	\$0	\$15,000	
MO1719-18A5	\$0	\$0	\$0	\$0	\$0	\$0	\$0	\$40,000	\$0	\$0	\$0	\$0	\$0	\$0	\$0	\$10,000	\$0	\$0	\$0	\$50,000	
MO1721-18A5	\$0	\$54,000	\$0	\$0	\$0	\$0	\$0	\$0	\$0	\$0	\$0	\$0	\$0	\$0	\$0	\$6,000	\$0	\$0	\$0	\$60,000	
MO1722	\$0	\$0	\$0	\$0	\$0	\$0	\$0	\$40,000	\$0	\$0	\$0	\$0	\$0	\$0	\$0	\$10,000	\$0	\$0	\$0	\$50,000	
MO1723	\$0	\$0	\$0	\$0	\$0	\$0	\$0	\$0	\$40,000	\$0	\$0	\$0	\$0	\$0	\$0	\$10,000	\$0	\$0	\$0	\$50,000	
MO1904-20A6	\$0	\$0	\$0	\$0	\$0	\$0	\$0	\$0	\$0	\$0	\$0	\$0	\$0	\$0	\$0	\$0	\$0	\$0	\$0	\$0	
MO1905-19	\$0	\$0	\$0	\$0	\$0	\$0	\$0	\$0	\$0	\$0	\$0	\$0	\$0	\$0	\$0	\$12,000	\$0	\$0	\$0	\$12,000	
MO2301-20A5	\$344,000	\$0	\$0	\$0	\$0	\$0	\$0	\$0	\$0	\$0	\$0	\$0	\$86,000	\$0	\$0	\$0	\$0	\$0	\$0	\$430,000	
NX1704	\$0	\$0	\$0	\$0	\$0	\$0	\$0	\$1,600	\$0	\$0	\$0	\$0	\$0	\$0	\$0	\$400	\$0	\$0	\$0	\$2,000	
NX2301-20A5	\$206,064	\$0	\$0	\$0	\$0	\$0	\$0	\$0	\$0	\$0	\$0	\$0	\$51,516	\$0	\$0	\$0	\$0	\$0	\$0	\$257,580	
OT1901-19A5	\$243,101	\$0	\$0	\$0	\$0	\$0	\$0	\$0	\$0	\$0	\$0	\$0	\$60,775	\$0	\$0	\$0	\$0	\$0	\$0	\$303,876	
SP4403-20A6	\$0	\$0	\$0	\$0	\$0	\$0	\$0	\$0	\$0	\$0	\$0	\$0	\$0	\$0	\$0	\$0	\$0	\$0	\$0	\$0	
SP4405-18A1	\$0	\$0	\$0	\$0	\$0	\$0	\$0	\$1,600	\$0	\$0	\$0	\$0	\$0	\$0	\$0	\$400	\$0	\$0	\$0	\$2,000	
SP1413-19	\$0	\$0	\$0	\$0	\$0	\$0	\$0	\$0	\$0	\$0	\$0	\$0	\$0	\$0	\$0	\$142,200	\$0	\$568,800	\$0	\$711,000	
SP1802-18	\$0	\$0	\$0	\$0	\$0	\$0	\$0	\$1,600	\$0	\$0	\$0	\$0	\$0	\$0	\$0	\$400	\$0	\$0	\$0	\$2,000	
SP1816-20A6	\$1,030,915	\$0	\$0	\$0	\$0	\$0	\$0	\$768,172	\$0	\$0	\$0	\$0	\$257,729	\$0	\$0	\$192,043	\$0	\$0	\$0	\$2,248,859	
SP1817-20A6	\$1,146,113	\$0	\$0	\$0	\$0	\$0	\$0	\$858,403	\$0	\$0	\$0	\$0	\$286,529	\$0	\$0	\$214,601	\$0	\$0	\$0	\$2,505,646	
SP1906-19	\$0	\$0	\$0	\$0	\$0	\$0	\$0	\$0	\$0	\$0	\$0	\$0	\$0	\$0	\$0	\$265,400	\$0	\$1,061,600	\$0	\$1,327,000	
SP1909-19A2	\$0	\$0	\$0	\$0	\$0	\$0	\$0	\$1,600	\$0	\$0	\$0	\$0	\$0	\$0	\$0	\$400	\$0	\$0	\$0	\$2,000	
SP1910-19A2	\$0	\$0	\$0	\$0	\$0	\$0	\$0	\$1,600	\$0	\$0	\$0	\$0	\$0	\$0	\$0	\$400	\$0	\$0	\$0	\$2,000	
SP1911-19A2	\$0	\$0	\$0	\$0	\$0	\$0	\$0	\$1,600	\$0	\$0	\$0	\$0	\$0	\$0	\$0	\$400	\$0	\$0	\$0	\$2,000	
SP2002-20	\$0	\$0	\$0	\$0	\$0	\$0	\$0	\$2,400	\$0	\$0	\$0	\$0	\$0	\$0	\$0	\$600	\$0	\$0	\$0	\$3,000	
SP2013-20	\$0	\$0	\$0	\$0	\$0	\$0	\$0	\$1,600	\$0	\$0	\$0	\$0	\$0	\$0	\$0	\$400	\$0	\$0	\$0	\$2,000	
SUBTOTAL	\$2,970,193	\$64,800	\$0	\$0	\$0	\$0	\$11,990,575	\$48,000	\$0	\$5,743,549	\$0	\$0	\$5,743,549	\$0	\$0	\$3,452,244	\$0	\$1,633,600	\$0	\$25,902,961	
GRAND TOTAL	\$44,582,848	\$19,978,800	\$1,411,200	\$5,551,200	\$1,286,000	\$350,151	\$71,299,766	\$10,343,861	\$19,278,422	\$597,500	\$740,993	\$30,019,476	\$1,682,400	\$0	\$29,086,181	\$913,500	\$10,989,450	\$123,499	\$248,235,267		

FINANCIAL CONSTRAINT

Roadways

	Federal Funding Source												Local Programmed Funds	MoDOT Programmed Funds	Other	State Operations and Maintenance	TOTAL
	STBG-U	Safety	Bridge	I/M	130	BRO	NHPP	STBG	BUILD	CRISI	FEMA	TOTAL Federal Funds					
2020 Funds Programmed	\$28,107,099	\$4,064,200	\$28,800	\$1,700,100	\$46,000	\$350,151	\$31,800,964	\$5,119,881	\$0	\$10,000	\$740,993	\$71,968,188	\$13,486,553	\$13,999,248	\$123,499	\$5,380,129	\$104,957,617
2021 Funds Programmed	\$6,432,222	\$2,345,800	\$1,382,400	\$3,851,100	\$440,000	\$0	\$16,120,003	\$4,556,800	\$19,278,422	\$25,500	\$0	\$54,432,247	\$10,260,539	\$11,699,122	\$0	\$5,476,971	\$81,868,879
2022 Funds Programmed	\$7,073,334	\$13,504,000	\$0	\$0	\$800,000	\$0	\$11,388,224	\$619,200	\$0	\$562,000	\$0	\$33,946,758	\$2,211,235	\$10,204,917	\$0	\$5,575,557	\$51,938,467
2023 Funds Programmed	\$2,970,193	\$64,800	\$0	\$0	\$0	\$0	\$11,990,575	\$48,000	\$0	\$0	\$0	\$15,073,568	\$5,743,549	\$5,085,844	\$0	\$5,675,917	\$31,578,878
Total	\$44,582,848	\$ 19,978,800	\$ 1,411,200	\$ 5,551,200	\$ 1,286,000	\$ 350,151	\$71,299,766	\$ 10,343,881	\$ 19,278,422	\$ 597,500	\$ 740,993	\$175,420,761	\$ 31,701,876	\$ 40,989,131	\$ 123,499	\$22,108,574	\$270,343,841

	Prior Year	FY 2020	FY 2021	FY 2022	FY 2023	TOTAL
Available State and Federal Funding	\$10,127,993	\$ 54,832,375	\$33,511,864	\$40,437,989	\$ 26,214,000	\$165,124,221
Federal Discretionary Funding	\$0	\$ 20,985,822	\$ -	\$ -	\$ -	\$20,985,822
Available Operations and Maintenance Funding	\$0	\$5,380,129	\$5,476,971	\$5,675,557	\$5,675,917	\$22,108,574
Funds from Other Sources (Inc. Local)	\$123,499	\$13,486,553	\$10,260,539	\$2,211,235	\$5,743,549	\$31,825,375
Available Suballocated Funding	\$27,323,332	\$4,646,453	\$2,590,776	\$6,963,501	\$7,102,771	\$48,626,832
TOTAL AVAILABLE FUNDING	\$37,574,824	\$99,331,332	\$51,840,150	\$55,188,282	\$44,736,237	\$288,670,824
Prior Year Funding		\$37,574,824	\$31,948,538	\$1,919,809	\$5,169,624	--
Programmed State and Federal Funding		(\$104,957,617)	(\$81,868,879)	(\$51,938,467)	(\$31,578,878)	(\$270,343,841)
TOTAL REMAINING	\$37,574,824	\$31,948,538	\$1,919,809	\$5,169,624	\$18,326,983	\$18,326,983

Additional Funds from Other Sources include one-time FEMA and SEMA grant funding for the Riverside Bridge Replacement.

Available State and Federal Funding shown here does not include Funding Available shown on Bike/Ped Financial Constraint Page.

See Table H.9 for details on Local Share Financial Capacity.

FINANCIAL SUMMARY

Transit

YEARLY SUMMARY

	Federal			Local	Other	State	
PROJECT	FTA (5307)	FTA (5310)	FTA (5339)	LOCAL	OTHER	MoDOT	TOTAL
2020							
CU1808-20A6	\$0	\$113,837	\$0	\$213,394	\$0	\$0	\$327,231
CU2000-17A2	\$1,744,193	\$0	\$0	\$5,594,535	\$0	\$42,500	\$7,381,228
CU2001-17A2	\$775,200	\$0	\$0	\$199,890	\$0	\$0	\$975,090
CU2004-17A2	\$171,360	\$0	\$0	\$44,100	\$0	\$0	\$215,460
CU2005-20A6	\$26,907	\$0	\$0	\$6,727	\$0	\$0	\$33,634
CU2006	\$0	\$0	\$755,919	\$233,783	\$0	\$0	\$989,702
CU2007-20A6	\$0	\$0	\$300,494	\$75,124	\$0	\$0	\$375,618
CU2008-20A6	\$2,000,000	\$0	\$0	\$0	\$0	\$0	\$2,000,000
MO1729-19A4	\$0	\$10,954	\$0	\$2,739	\$0	\$0	\$13,693
MO1901-17A5	\$0	\$14,192	\$0	\$0	\$0	\$0	\$14,192
MO1910-19A4	\$0	\$141,768	\$0	\$35,442	\$0	\$0	\$177,210
SUBTOTAL	\$4,717,660	\$280,751	\$1,056,413	\$6,405,734	\$0	\$42,500	\$12,503,058
2021							
CU2008-20A6	\$2,000,000	\$0	\$0	\$0	\$0	\$0	\$2,000,000
CU2100	\$1,779,077	\$0	\$0	\$5,706,426	\$0	\$42,500	\$7,528,003
CU2101-20A6	\$790,704	\$0	\$0	\$197,676	\$0	\$0	\$988,380
CU2104-20A6	\$174,787	\$0	\$0	\$43,697	\$0	\$0	\$218,484
CU2105-20A6	\$27,445	\$0	\$0	\$6,861	\$0	\$0	\$34,306
CU2111-20A6	\$0	\$0	\$1,496,329	\$6,082	\$368,000	\$0	\$1,870,411
MO1729-19A4	\$0	\$159,237	\$0	\$39,809	\$0	\$0	\$199,046
MO1901-17A5	\$0	\$14,476	\$0	\$0	\$0	\$0	\$14,476
SUBTOTAL	\$4,772,013	\$173,713	\$1,496,329	\$6,000,551	\$368,000	\$42,500	\$12,853,106
2022							
CU2008-20A6	\$2,000,000	\$0	\$0	\$0	\$0	\$0	\$2,000,000
CU2200-19	\$1,814,658	\$0	\$0	\$5,820,554	\$0	\$42,500	\$7,677,712
CU2201-19	\$806,518	\$0	\$0	\$207,966	\$0	\$0	\$1,014,484
CU2202-19	\$178,283	\$0	\$0	\$45,882	\$0	\$0	\$224,165
CU2203-19	\$27,994	\$0	\$0	\$7,210	\$0	\$0	\$35,204
CU2204-19	\$0	\$228,283	\$0	\$358,149	\$0	\$0	\$586,432
MO1729-19A4	\$0	\$162,422	\$0	\$40,605	\$0	\$0	\$203,027
MO1901-17A5	\$0	\$14,766	\$0	\$0	\$0	\$0	\$14,766
SUBTOTAL	\$4,827,453	\$405,471	\$0	\$6,480,366	\$0	\$42,500	\$11,755,790

FINANCIAL SUMMARY

Transit

YEARLY SUMMARY

	Federal			Local	Other	State	
PROJECT	FTA (5307)	FTA (5310)	FTA (5339)	LOCAL	OTHER	MoDOT	TOTAL
2023							
CU2008-20A6	\$1,633,199	\$0	\$0	\$0	\$0	\$0	\$1,633,199
CU2300-20	\$1,850,951	\$0	\$0	\$5,820,554	\$0	\$42,500	\$7,714,005
CU2301-20	\$822,648	\$0	\$0	\$207,966	\$0	\$0	\$1,030,614
CU2302-20	\$181,850	\$0	\$0	\$45,882	\$0	\$0	\$227,732
CU2303-20	\$28,554	\$0	\$0	\$7,354	\$0	\$0	\$35,908
MO1729-19A4	\$0	\$165,670	\$0	\$41,418	\$0	\$0	\$207,088
MO1901-17A5	\$0	\$15,061	\$0	\$0	\$0	\$0	\$15,061
SUBTOTAL	\$4,517,202	\$180,731	\$0	\$6,123,174	\$0	\$42,500	\$10,863,607
GRAND TOTAL	\$18,834,328	\$1,040,666	\$2,552,742	\$25,009,825	\$368,000	\$170,000	\$47,975,561

FINANCIAL CONSTRAINT

Transit

	Federal Funding Source			Local	MoDOT	TOTAL
	5307	5310	5339			
PRIOR YEAR						
Balance	\$ -	\$ 555,612	\$ 2,585,441	\$ -	\$ -	\$ 3,141,053
FY 2020						
Funds Anticipated	\$ 10,350,859	\$ 283,845	\$ 389,993	\$ 8,116,029	\$ 42,500	\$19,183,226
Funds Programmed	(\$4,717,660)	(\$280,751)	(\$1,056,413)	(\$6,405,734)	(\$42,500)	(\$12,503,058)
Running Balance	\$5,633,199	\$558,706	\$1,919,021	\$1,710,295	\$0	\$9,821,221
FY 2021						
Funds Anticipated	\$ 2,772,013	\$ 289,521	\$ 396,792	\$ 8,805,809	\$ 42,500	\$12,306,635
Funds Programmed	(\$4,772,013)	(\$173,713)	(\$1,496,329)	(\$6,000,551)	(\$42,500)	(\$12,485,106)
Running Balance	\$3,633,199	\$674,514	\$819,484	\$4,515,553	\$0	\$9,642,750
FY 2022						
Funds Anticipated	\$ 2,827,453	\$ 295,312	\$ 403,728	\$ 9,689,405	\$ 42,500	\$13,258,398
Funds Programmed	(\$4,827,453)	(\$405,471)	\$ -	(\$6,480,366)	(\$42,500)	(\$11,755,790)
Running Balance	\$1,633,199	\$564,355	\$1,223,212	\$7,724,592	\$0	\$11,145,358
FY 2023						
Funds Anticipated	\$ 2,884,003	\$ 301,218	\$ 411,803	\$ 10,294,218	\$ 42,500	\$13,933,742
Funds Programmed	(\$4,517,202)	(\$180,731)	\$ -	(\$6,123,174)	\$ (42,500)	(\$10,863,607)
Running Balance	\$0	\$684,842	\$1,635,015	\$11,895,636	\$0	\$14,215,493

Advertising

City Utilities Transit receives over \$100,000 per year on their transit advertising contract. Advertisements are sold on buses, inside the fixed route buses, bus shelters with ad panels, and bus benches.

Utility Ratepayers

The City Utilities Customers for Electric, Gas, Water, and SpringNet provide the local match for public transportation in Springfield, Missouri. The net amount absorbed by the Utility customers varies from year to year based on the amount of budgeted expenditures for operations, maintenance, and capital expenditures.

Human Service Providers

FTA Section 5310 funding is competitively awarded on a regular basis to area Human Service Transportation providers. The 5310 awards are administered by MoDOT as set forth in an MOU and the Program Management Plan. The responsibility is on MoDOT to confirm financial capacity in administering these projects. As part of the application process and in executing vehicle purchase agreements with MoDOT, awardees are required to demonstrate financial capacity for both the match and the maintenance of any vehicle purchased. Sources for this funding depends upon the agency, but projects are not awarded to those agencies who cannot provide the requisite match.

PROJECTED REVENUES

In an effort to demonstrate that the local jurisdictions and agencies are able to fund the projects programmed in the TIP, in addition to maintaining the federal aid system, the following revenue estimates are included. OTO is not using any inflation in these revenue projections as the sources are fuel taxes, sales taxes, and property taxes, rather, the projections are adjusted each year with the revised TIP. The TIP financial element is consistent with the OTO Long Range Transportation Plan, *Transportation Plan 2040*.

STATE AND FEDERAL

Table H.1 Summary	2020	2021	2022	2023	Total
MoDOT State/Federal Funding	\$60,230,000	\$42,020,000	\$43,902,500	\$27,859,000	\$174,011,500
BUILD (2019 Springfield Award)	\$20,960,822	\$0	\$0	\$0	\$0

*Includes Engineering and Rail funding

Table H.2	STBG-Urban	TAP	5307	5310	5339
Carryover Balance through FY2019	\$27,323,331.75	\$853,353.32	\$0	\$555,612	\$2,585,441
Anticipated Allocation FY2020	\$6,693,099.69	\$421,887.06	\$10,350,859	\$283,845	\$389,993
Anticipated Allocation FY2021	\$6,826,961.68	\$430,324.80	\$2,772,013	\$289,521	\$396,792
Anticipated Allocation FY2022	\$6,963,500.92	\$438,931.30	\$2,827,453	\$295,312	\$403,728
Anticipated Allocation FY2023	\$7,102,770.93	\$447,709.92	\$2,884,003	\$301,218	\$411,803
Total Anticipated Allocation	\$27,586,333.22	\$1,738,853.08	\$18,834,328	\$1,169,896	\$1,602,316
Programmed through FY2023	(\$50,865,681.00)	(\$1,275,239.00)	(\$16,983,377)	(\$1,040,666)	(\$2,552,742)
Estimated Carryover Balance Through FY 2023	\$4,043,983.97	\$1,316,967.40	\$1,850,951	\$684,842	\$1,635,015

Table H.9 Local Share Financial Capacity	2020	2021	2022	2023
City of Battlefield				
Total Available Revenue	\$380,610.00	\$380,610.00	\$380,610.00	\$380,610.00
Carryover Balance from Prior Year	--	\$159,735.00	\$454,269.66	\$811,715.75
Estimated Operations and Maintenance Expenditures	(\$22,352.00)	(\$22,754.34)	(\$23,163.91)	(\$23,580.86)
Estimated TIP Project Expenditures	(\$198,523.00)	(\$63,321.00)	\$0.00	\$0.00
Amount Available for Local Projects	\$159,735.00	\$454,269.66	\$811,715.75	\$1,168,744.89
City of Nixa				
Total Available Revenue	\$2,137,719.00	\$2,137,719.00	\$2,137,719.00	\$2,137,719.00
Carryover Balance from Prior Year	--	\$1,703,973.64	\$2,850,878.94	\$4,538,585.36
Estimated Operations and Maintenance Expenditures	(\$202,241.36)	(\$205,881.70)	(\$209,587.58)	(\$213,360.15)
Estimated TIP Project Expenditures	(\$231,504.00)	(\$784,932.00)	(\$240,425.00)	(\$51,516.00)
Amount Available for Local Projects	\$1,703,973.64	\$2,850,878.94	\$4,538,585.36	\$6,411,428.21
City of Ozark				
Total Available Revenue	\$1,889,656.00	\$1,889,656.00	\$1,889,656.00	\$1,889,656.00
Carryover Balance from Prior Year	--	\$290,104.16	\$1,860,616.75	\$3,724,676.75
Estimated Operations and Maintenance Expenditures	(\$24,698.84)	(\$25,143.41)	(\$25,596.00)	(\$26,056.72)
Estimated TIP Project Expenditures	(\$1,574,853.00)	(\$294,000.00)	\$0.00	\$0.00
Amount Available for Local Projects	\$290,104.16	\$1,860,616.75	\$3,724,676.75	\$5,588,276.03
City of Republic				
Total Available Revenue	\$2,033,343.00	\$2,033,343.00	\$2,033,343.00	\$2,033,343.00
Carryover Balance from Prior Year	--	\$1,763,962.45	\$3,505,433.03	\$5,361,744.38
Estimated Operations and Maintenance Expenditures	(\$170,826.55)	(\$173,901.42)	(\$177,031.65)	(\$180,218.22)
Estimated TIP Project Expenditures	(\$98,554.00)	(\$117,971.00)	\$0.00	\$0.00
Amount Available for Local Projects	\$1,763,962.45	\$3,505,433.03	\$5,361,744.38	\$7,214,869.16
City of Springfield				
Total Available Revenue	\$25,582,262.00	\$25,582,262.00	\$25,582,262.00	\$25,582,262.00
Carryover Balance from Prior Year	--	\$18,967,749.28	\$29,742,798.08	\$49,472,177.86
Estimated Operations and Maintenance Expenditures	(\$2,575,693.72)	(\$2,622,056.20)	(\$2,669,253.22)	(\$2,717,299.77)
Estimated TIP Project Expenditures	(\$4,038,819.00)	(\$12,185,157.00)	(\$3,183,629.00)	(\$3,372,543.00)
Amount Available for Local Projects	\$18,967,749.28	\$29,742,798.08	\$49,472,177.86	\$68,964,597.09

Table H.9 Local Share Financial Capacity cont.	2020	2021	2022	2023
City of Strafford				
Total Available Revenue	\$115,568.00	\$115,568.00	\$115,568.00	\$115,568.00
Carryover Balance from Prior Year	--	\$63,598.00	\$175,398.39	\$287,130.96
Estimated Operations and Maintenance Expenditures	(\$3,701.00)	(\$3,767.61)	(\$3,835.43)	(\$3,904.47)
Estimated TIP Project Expenditures	(\$48,269.00)	\$0.00	\$0.00	\$0.00
Amount Available for Local Projects	\$63,598.00	\$175,398.39	\$287,130.96	\$398,794.49
City of Willard				
Total Available Revenue	\$484,421.00	\$484,421.00	\$484,421.00	\$484,421.00
Carryover Balance from Prior Year		\$381,887.44	\$804,746.36	\$1,226,497.15
Estimated Operations and Maintenance Expenditures	(\$60,473.56)	(\$61,562.08)	(\$62,670.20)	(\$63,798.27)
Estimated TIP Project Expenditures	(\$42,060.00)	\$0.00	\$0.00	\$0.00
Amount Available for Local Projects	\$381,887.44	\$804,746.36	\$1,226,497.15	\$1,647,119.89
Christian County				
Total Available Revenue	\$5,761,618.00	\$5,761,618.00	\$5,761,618.00	\$5,761,618.00
Carryover Balance from Prior Year	--	\$5,681,090.80	\$11,360,732.11	\$17,038,897.84
Estimated Operations and Maintenance Expenditures	(\$80,527.20)	(\$81,976.69)	(\$83,452.27)	(\$84,954.41)
Estimated TIP Project Expenditures	\$0.00	\$0.00	\$0.00	\$0.00
Amount Available for Local Projects	\$5,681,090.80	\$11,360,732.11	\$17,038,897.84	\$22,715,561.43
Greene County				
Total Available Revenue	\$24,496,117.00	\$24,496,117.00	\$24,496,117.00	\$24,496,117.00
Carryover Balance from Prior Year	\$1,062,967.00	\$17,564,435.81	\$41,173,241.35	\$63,777,252.28
Estimated Operations and Maintenance Expenditures	(\$615,237.19)	(\$626,311.46)	(\$637,585.07)	(\$649,061.60)
Estimated TIP Project Expenditures	(\$7,379,411.00)	(\$261,000.00)	(\$1,254,521.00)	(\$5,001,000.00)
Amount Available for Local Projects	\$17,564,435.81	\$41,173,241.35	\$63,777,252.28	\$82,623,307.68
City Utilities				
Total Available Revenue	\$8,161,500.00	\$8,850,500.00	\$9,695,500.00	\$10,299,500.00
Estimated Operations and Maintenance Expenditures	(\$5,845,252.00)	(\$5,954,660.00)	(\$6,081,612.00)	(\$6,081,756.00)
Available for TIP Project Expenditures	\$2,316,248.00	\$2,895,840.00	\$3,613,888.00	\$4,217,744.00
Carryover from Prior Year	--	\$1,924,328.00	\$4,814,086.00	\$8,069,825.00
Estimated TIP Project Expenditures	(\$391,920.00)	(\$6,082.00)	(\$358,149.00)	\$0.00
Amount Available for Local Projects	\$1,924,328.00	\$4,814,086.00	\$8,069,825.00	\$12,287,569.00

TRANSIT 5310 PROGRAM OF PROJECTS

FTA Section 5310 funding is allocated annually, with 55 percent required to be used for traditional elderly and disabled transportation projects. MoDOT administers the traditional projects for the OTO region. The following pages outline the use of this funding from FY 2015 through FY 2022 as previously and currently programmed.

Program of Projects and Subrecipients	Project Description	Quantity	Funding Year	Status	FTA Amount	Local Amount	Total Amount
Arc of the Ozarks MO1702-17A5	Wide Body Cutaway Floor Plan HH	1	FY 2018	Awaiting Delivery	\$43,490	\$10,873	\$54,363
City Utilities CU1808-17A5	Division Improvements	1	FY 2018 - FY 2020	In Progress	\$332,052	\$83,013	\$415,065
OATS, Inc. MO1704-17A5	Wide Body Cutaway, Floor Plan II	2	FY 2018	Awaiting Delivery	\$92,182	\$23,046	\$115,228
Springfield-GC Parks MO1907-19A4	Wide Body Cutaway, Floor Plan GG	1	FY 2019	Awaiting Delivery	\$52,000	\$13,000	\$65,000
Arc of the Ozarks MO1908-19A4	Med. Roof Long Conversion	2	FY 2019	Awaiting Delivery	\$86,400	\$21,600	\$108,000
OATS, Inc. MO1909-19A4	Med. Roof Long Conversion with ADA Flip Seats	1	FY 2019	Awaiting Delivery	\$38,722	\$9,680	\$48,402
OATS, Inc. MO1910-19A4	Wide Body Cutaway, Floor Plan II	3	FY 2020	Programmed	\$141,768	\$35,442	\$177,210
City Utilities CC2204-19	Paratransit Buses	2	FY2022	Pending Future Application	\$228,283	\$57,071	\$285,354
Reserve MO1729-19A4	N/A	N/A	FY 2020 - FY 2022	Programmed	\$332,613	\$83,153	\$415,766
Total					\$1,347,510	\$336,878	\$1,684,388

Program of Projects and Subrecipients	Project Description	Quantity	Funding Year	Status	FTA Amount	Local Amount	Total Amount
MoDOT - MO1802-17A5	Admin		FY 18	Approved	\$13,641	\$-	\$13,641
MoDOT - MO1901-17A5	Admin		FY 2019	Approved	\$13,914	\$-	\$72,409
			FY 2020-2023	Programmed	\$58,495	\$-	
Total					\$86,050	N/A	\$86,050

Total FY 2017 Balance - FY 2023 traditional 5310 capital amount available	\$952,844
FY 2017 Balance - FY 2023 traditional 5310 capital amount awarded	(\$454,562)
Balance Remaining in reserve for 5310 traditional projects	\$498,283
Total FY 2018 - 2023 other capital amount available	\$688,399
FY 2018 - FY 2023 other capital amount awarded	(\$332,052)
FY 2023 other capital amount pending	(\$228,283)
Balance remaining for other capital	\$128,064
Total FY 2018-2023 administration available	\$86,050
FY 2018-2023 administration awarded	(\$27,555)
Balance remaining for administration	\$58,495