



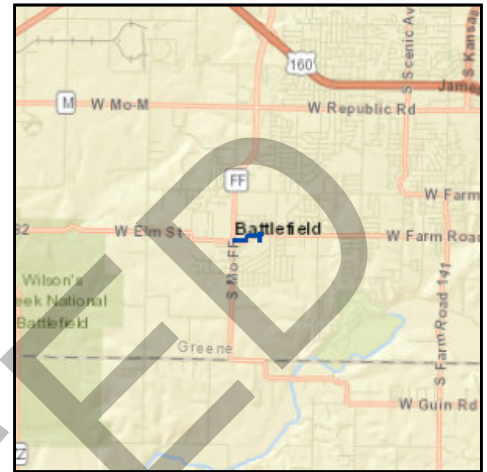
Transportation Improvement Program - FY 2019-2022

Project Detail by Section and Project Number with Map

K) Pending Amendment Section

TIP # EN1904-19A3 BATTLEFIELD THIRD ST. SIDEWALK CONNECTION

Route Third Street
From Route FF
To Battlefield City Hall
Location City of Battlefield
Federal Agency FHWA
Project Sponsor City of Battlefield
Federal Funding Category TAP
MoDOT Funding Category N/A
Bike/Ped Plan? Yes **EJ?**
STIP #
Federal ID # 9901817



Project Description

Sidewalk connections in Battlefield along Third St./Clairborne St./Fourth St./Elm St. into Cherokee Trail of Tears Park from Route FF to Battlefield City Hall.

Fund Code	Source	Phase	FY2019	FY2020	FY2021	FY2022	Total
FHWA (TAP)	Federal	ENG	\$28,000	\$28,000	\$0	\$0	\$56,000
LOCAL	Local	ENG	\$7,000	\$7,000	\$0	\$0	\$14,000
FHWA (TAP)	Federal	CON	\$0	\$244,000	\$0	\$0	\$244,000
LOCAL	Local	CON	\$0	\$61,000	\$0	\$0	\$61,000
Totals			\$35,000	\$340,000	\$0	\$0	\$375,000

Notes

Non-Federal Funding Source: City of Battlefield

Prior Cost	\$0
Future Cost	\$0
Total Cost	\$375,000



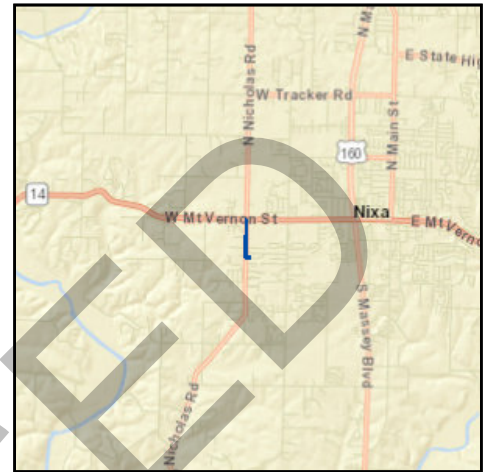
Transportation Improvement Program - FY 2019-2022

Project Detail by Section and Project Number with Map

K) Pending Amendment Section

TIP # EN1905-19A3 NICHOLAS SIDEWALKS PH 1 AND PH 2

Route Nicholas
From Route 14
To Verna Lane
Location City of Nixa
Federal Agency FHWA
Project Sponsor City of Nixa
Federal Funding Category STBG-U
MoDOT Funding Category N/A
Bike/Ped Plan? Yes **EJ?**
STIP #
Federal ID # 9901818



Project Description

Sidewalk connection along Route M/Nicholas Road between MO 14 and Verna Lane, including a small segment along Verna Lane.

Fund Code	Source	Phase	FY2019	FY2020	FY2021	FY2022	Total
FHWA (STBG-U)	Federal	ENG	\$44,000	\$0	\$0	\$0	\$44,000
LOCAL	Local	ENG	\$11,000	\$0	\$0	\$0	\$11,000
FHWA (STBG-U)	Federal	ROW	\$9,600	\$0	\$0	\$0	\$9,600
LOCAL	Local	ROW	\$2,400	\$0	\$0	\$0	\$2,400
FHWA (STBG-U)	Federal	CON	\$0	\$324,014	\$0	\$0	\$324,014
LOCAL	Local	CON	\$0	\$81,004	\$0	\$0	\$81,004
Totals			\$67,000	\$405,018	\$0	\$0	\$472,018

Notes

Non-Federal Funding Source: City of Nixa General Funds, Nixa Public Schools (\$5000), Christian County Commission (\$15,000)

Prior Cost \$0
Future Cost \$0
Total Cost \$472,018



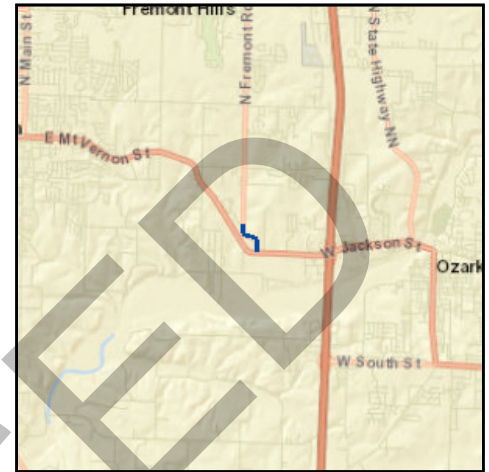
Transportation Improvement Program - FY 2019-2022

Project Detail by Section and Project Number with Map

K) Pending Amendment Section

TIP # EN1906-19A3 **OZARK N. FREMONT SIDEWALKS**

Route Fremont Road
From Route 14
To OTC Richwood Valley Trail
Location City of Ozark
Federal Agency FHWA
Project Sponsor City of Ozark
Federal Funding Category STBG-U
MoDOT Funding Category N/A
Bike/Ped Plan? Yes **EJ?**
STIP #
Federal ID # 9901820



Project Description

Sidewalk connections in Ozark along Fremont Road from MO 14 to the OTC Richwood Valley Trail west of Fremont.

Fund Code	Source	Phase	FY2019	FY2020	FY2021	FY2022	Total
FHWA (STBG-U)	Federal	ENG	\$17,570	\$12,298	\$0	\$0	\$29,868
LOCAL	Local	ENG	\$4,392	\$3,075	\$0	\$0	\$7,467
FHWA (STBG-U)	Federal	CON	\$0	\$175,692	\$0	\$0	\$175,692
LOCAL	Local	CON	\$0	\$43,923	\$0	\$0	\$43,923
Totals			\$21,962	\$234,988	\$0	\$0	\$256,950

Notes

Non-Federal Funding Source: City of Ozark Transportation Sales Tax

Prior Cost	\$0
Future Cost	\$0
Total Cost	\$256,950



Transportation Improvement Program - FY 2019-2022

Project Detail by Section and Project Number with Map

K) Pending Amendment Section

TIP # EN1907-19A3 OZARK SOUTH ELEM SIDEWALKS

Route Ozark South Elementary

From 13th Street

To Route 14

Location City of Ozark

Federal Agency FHWA

Project Sponsor City of Ozark

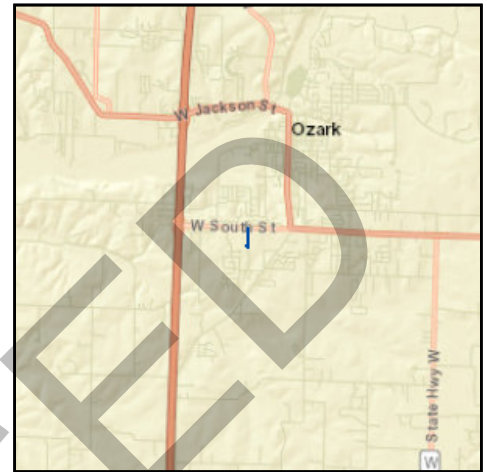
Federal Funding Category TAP

MoDOT Funding Category N/A

Bike/Ped Plan? Yes **EJ?**

STIP #

Federal ID # 9901821



Project Description

Sidewalk connection in Ozark along the eastern edge of the South Elementary School property from the northern terminus of the existing sidewalk along 13th Street, just south of the school property, to Business 65.

Fund Code	Source	Phase	FY2019	FY2020	FY2021	FY2022	Total
FHWA (TAP)	Federal	ENG	\$13,049	\$9,134	\$0	\$0	\$22,183
LOCAL	Local	ENG	\$3,262	\$2,284	\$0	\$0	\$5,546
FHWA (TAP)	Federal	CON	\$0	\$130,487	\$0	\$0	\$130,487
LOCAL	Local	CON	\$0	\$32,622	\$0	\$0	\$32,622
Totals			\$16,311	\$174,527	\$0	\$0	\$190,838

Notes

Non-Federal Funding Source: City of Ozark Transportation Sales Tax

Prior Cost	\$0
Future Cost	\$0
Total Cost	\$190,838



Transportation Improvement Program - FY 2019-2022

Project Detail by Section and Project Number with Map

K) Pending Amendment Section

TIP # EN1908-19A3 OZARK WEST ELEM SIDEWALKS

Route Fremont
From North of Route CC
To South of Route CC
Location City of Ozark
Federal Agency FHWA
Project Sponsor City of Ozark
Federal Funding Category TAP
MoDOT Funding Category N/A
Bike/Ped Plan? Yes **EJ?**
STIP #
Federal ID # 9901822



Project Description

Sidewalk connections in Ozark along Fremont extending north and south of Route CC and intersection improvements at Fremont and Route CC.

Fund Code	Source	Phase	FY2019	FY2020	FY2021	FY2022	Total
FHWA (TAP)	Federal	ENG	\$27,766	\$19,436	\$0	\$0	\$47,202
LOCAL	Local	ENG	\$6,941	\$4,859	\$0	\$0	\$11,800
FHWA (TAP)	Federal	CON	\$0	\$277,657	\$0	\$0	\$277,657
LOCAL	Local	CON	\$0	\$69,415	\$0	\$0	\$69,415
Totals			\$34,707	\$371,367	\$0	\$0	\$406,074

Notes

Non-Federal Funding Source: City of Ozark Transportation Sales Tax

Prior Cost	\$0
Future Cost	\$0
Total Cost	\$406,074



Transportation Improvement Program - FY 2019-2022

Project Detail by Section and Project Number with Map

K) Pending Amendment Section

TIP # EN1909-19A3 **SPRINGFIELD GREENWOOD GALLOWAY TRAIL CONNECTION**

Route Greenwood and Lone Pine

From

To

Location City of Springfield

Federal Agency FHWA

Project Sponsor City of Springfield

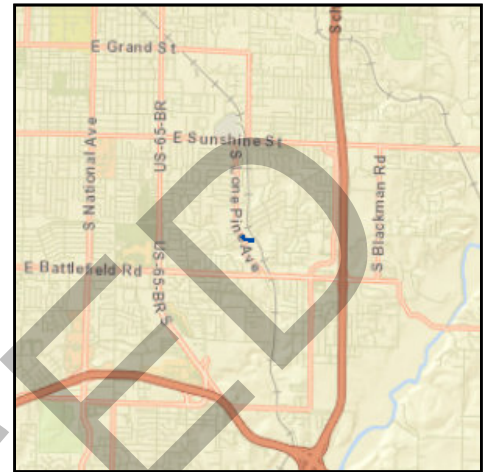
Federal Funding Category STBG-U

MoDOT Funding Category N/A

Bike/Ped Plan? Yes **EJ?**

STIP #

Federal ID # 5901811



Project Description

Sidewalk connections along Lone Pine Avenue and Covington Street from Greenwood Street to the Galloway Trail.

Fund Code	Source	Phase	FY2019	FY2020	FY2021	FY2022	Total
FHWA (STBG-U)	Federal	CON	\$183,365	\$0	\$0	\$0	\$183,365
LOCAL	Local	CON	\$45,841	\$0	\$0	\$0	\$45,841
Totals			\$229,206	\$0	\$0	\$0	\$229,206

Notes

Non-Federal Funding Source: City of Springfield 1/8 cent Transportation Sales Tax

Prior Cost	\$0
Future Cost	\$0
Total Cost	\$229,206



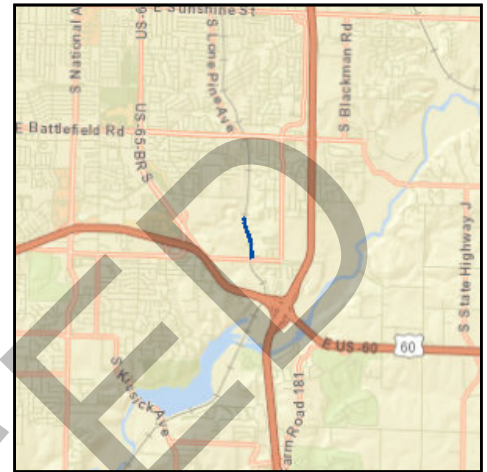
Transportation Improvement Program - FY 2019-2022

Project Detail by Section and Project Number with Map

K) Pending Amendment Section

TIP # EN1910-19A3 GALLOWAY TRAIL RECONSTRUCTION

Route Galloway Trail
From Sequiota Park
To Republic Road
Location City of Springfield
Federal Agency FHWA
Project Sponsor City of Springfield
Federal Funding Category STBG-U
MoDOT Funding Category N/A
Bike/Ped Plan? Yes **EJ?**
STIP #
Federal ID # 5901812



Project Description

Reconstruction of the Galloway Greenway Trail in Springfield along Lone Pine Ave. from Sequiota Park to Republic Rd.

Fund Code	Source	Phase	FY2019	FY2020	FY2021	FY2022	Total
FHWA (STBG-U)	Federal	CON	\$0	\$146,098	\$0	\$0	\$146,098
LOCAL	Local	CON	\$0	\$36,524	\$0	\$0	\$36,524
Totals			\$0	\$182,622	\$0	\$0	\$182,622

Notes

Non-Federal Funding Source: City of Springfield 1/8 cent Transportation Sales Tax

Prior Cost	\$0
Future Cost	\$0
Total Cost	\$182,622



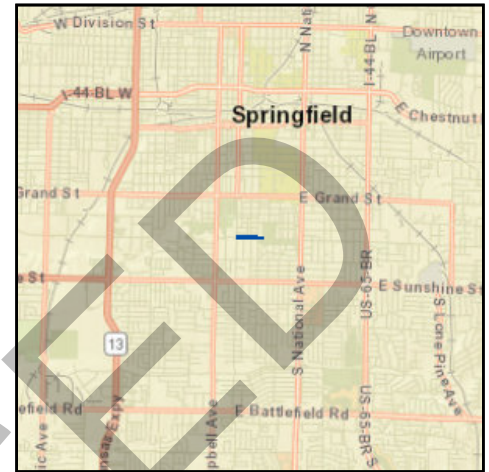
Transportation Improvement Program - FY 2019-2022

Project Detail by Section and Project Number with Map

K) Pending Amendment Section

TIP # EN1911-19A3 FASSNIGHT FROM JEFFERSON TO PHELPS GROVE PARK

Route Bennett
From Jefferson
To Phelps Grove Park
Location City of Springfield
Federal Agency FHWA
Project Sponsor City of Springfield
Federal Funding Category TAP
MoDOT Funding Category N/A
Bike/Ped Plan? Yes **EJ?**
STIP #
Federal ID # 5901813



Project Description

Trail connections in Springfield along Bennett Street from Jefferson to Phelps Grove Park, with gaps at 1400 and 1415 E Bennett.

Fund Code	Source	Phase	FY2019	FY2020	FY2021	FY2022	Total
FHWA (TAP)	Federal	CON	\$0	\$72,708	\$0	\$0	\$72,708
LOCAL	Local	CON	\$0	\$18,177	\$0	\$0	\$18,177
Totals			\$0	\$90,885	\$0	\$0	\$90,885

Notes

Non-Federal Funding Source: City of Springfield 1/8 cent Transportation Sales Tax

Prior Cost	\$0
Future Cost	\$0
Total Cost	\$90,885



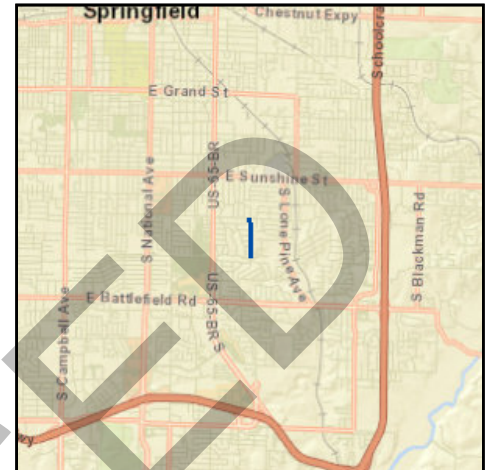
Transportation Improvement Program - FY 2019-2022

Project Detail by Section and Project Number with Map

K) Pending Amendment Section

TIP # EN1912-19A3 **SPRINGFIELD LUSTER SIDEWALKS SEMINOLE TO SUNSET**

Route Luster
From Seminole
To Sunset
Location City of Springfield
Federal Agency FHWA
Project Sponsor City of Springfield
Federal Funding Category TAP
MoDOT Funding Category N/A
Bike/Ped Plan? Yes **EJ?**
STIP #
Federal ID # 5901814



Project Description

Sidewalk connections in Springfield along Luster Avenue from Seminole Street to Sunset Drive.

Fund Code	Source	Phase	FY2019	FY2020	FY2021	FY2022	Total
FHWA (TAP)	Federal	CON	\$85,911	\$0	\$0	\$0	\$85,911
LOCAL	Local	CON	\$21,478	\$0	\$0	\$0	\$21,478
Totals			\$107,389	\$0	\$0	\$0	\$107,389

Notes

Non-Federal Funding Source: City of Springfield 1/8 cent Transportation Sales Tax

Prior Cost	\$0
Future Cost	\$0
Total Cost	\$107,389



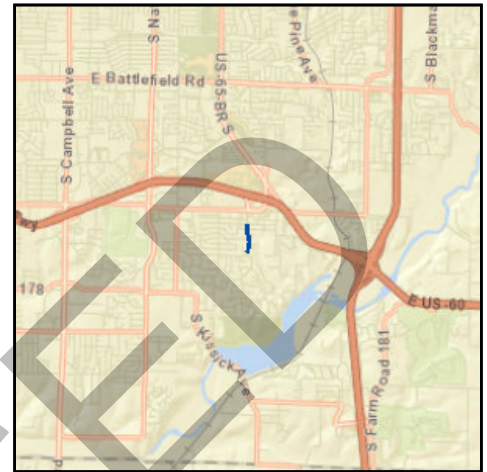
Transportation Improvement Program - FY 2019-2022

Project Detail by Section and Project Number with Map

K) Pending Amendment Section

TIP # EN1913-19A3 **SPRINGFIELD HARVARD SIDEWALK SWALLOW TO ALADDIN**

Route Harvard
From Swallow
To Aladdin
Location City of Springfield
Federal Agency FHWA
Project Sponsor City of Springfield
Federal Funding Category STBG-U
MoDOT Funding Category N/A
Bike/Ped Plan? Yes **EJ?**
STIP #
Federal ID # 5901815



Project Description

Sidewalk connections in Springfield along Harvard Avenue from Swallow Street to Aladdin Court.

Fund Code	Source	Phase	FY2019	FY2020	FY2021	FY2022	Total
FHWA (STBG-U)	Federal	CON	\$110,869	\$0	\$0	\$0	\$110,869
LOCAL	Local	CON	\$27,717	\$0	\$0	\$0	\$27,717
Totals			\$138,586	\$0	\$0	\$0	\$138,586

Notes

Non-Federal Funding Source: City of Springfield 1/8 cent Transportation Sales Tax

Prior Cost	\$0
Future Cost	\$0
Total Cost	\$138,586



Transportation Improvement Program - FY 2019-2022

Project Detail by Section and Project Number with Map

K) Pending Amendment Section

TIP # MO1906-19A3 **ON-CALL BRIDGE REPAIRS**

Route Various

From Various

To Various

Location Area Wide

Federal Agency FHWA

Project Sponsor MoDOT

Federal Funding Category NHPP(Bridge)

MoDOT Funding Category Taking Care of the System

Bike/Ped Plan? EJ?

STIP # TBD

Federal ID #

Project Description

Job order contracting for bridge repair at various locations in the Ozarks Transportation Organization area.



Fund Code	Source	Phase	FY2019	FY2020	FY2021	FY2022	Total
FHWA (NHPP)	Federal	ENG	\$22,400	\$0	\$0	\$0	\$22,400
MoDOT	State	ENG	\$5,600	\$0	\$0	\$0	\$5,600
FHWA (NHPP)	Federal	CON	\$155,200	\$0	\$0	\$0	\$155,200
MoDOT	State	CON	\$38,800	\$0	\$0	\$0	\$38,800
Totals			\$222,000	\$0	\$0	\$0	\$222,000

Notes

Non-Federal Funding Source: State Transportation Revenues

Prior Cost	\$0
Future Cost	\$0
Total Cost	\$222,000



Transportation Improvement Program - FY 2019-2022

Project Detail by Section and Project Number with Map

K) Pending Amendment Section

TIP # MO1906-19A3 **ON-CALL BRIDGE REPAIRS**

Route Various

From Various

To Various

Location Area Wide

Federal Agency FHWA

Project Sponsor MoDOT

Federal Funding Category NHPP(Bridge)

MoDOT Funding Category Taking Care of the System

Bike/Ped Plan? EJ?

STIP # TBD

Federal ID #

Project Description

Job order contracting for bridge repair at various locations in the Ozarks Transportation Organization area.



Fund Code	Source	Phase	FY2019	FY2020	FY2021	FY2022	Total
FHWA (NHPP)	Federal	ENG	\$22,400	\$0	\$0	\$0	\$22,400
MoDOT	State	ENG	\$5,600	\$0	\$0	\$0	\$5,600
FHWA (NHPP)	Federal	CON	\$155,200	\$0	\$0	\$0	\$155,200
MoDOT	State	CON	\$38,800	\$0	\$0	\$0	\$38,800
Totals			\$222,000	\$0	\$0	\$0	\$222,000

Notes

Non-Federal Funding Source: State Transportation Revenues

Prior Cost	\$0
Future Cost	\$0
Total Cost	\$222,000



Transportation Improvement Program - FY 2019-2022

Project Detail by Section and Project Number with Map

K) Pending Amendment Section

TIP # OK1802-19A3 **RIVERSIDE BRIDGE**

Route Riverside

From Greenbridge

To Smallin

Location Christian County

Federal Agency FHWA

Project Sponsor City of Ozark

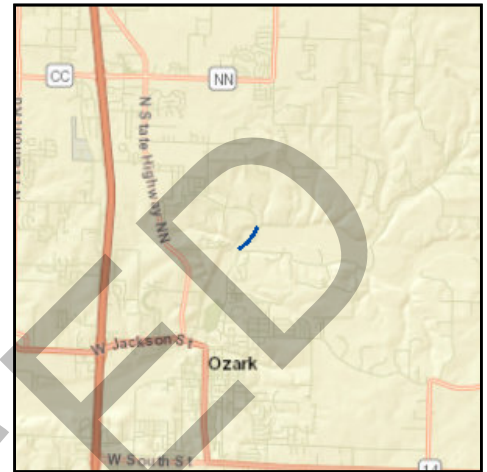
Federal Funding Category STBG-U

MoDOT Funding Category N/A

Bike/Ped Plan? Yes **EJ?** Yes

STIP #

Federal ID #



Project Description

Construct new Riverside Bridge with new alignment from Greenbridge Road to Smallin Road as a two-lane with bike/ped accommodations.

Fund Code	Source	Phase	FY2019	FY2020	FY2021	FY2022	Total
FHWA (BRO)	Federal	ENG	\$106,504	\$0	\$0	\$0	\$106,504
LOCAL	Local	ENG	\$11,834	\$0	\$0	\$0	\$11,834
FHWA (BRO)	Federal	ROW	\$50,000	\$0	\$0	\$0	\$50,000
LOCAL	Local	ROW	\$17,353	\$0	\$0	\$0	\$17,353
FEMA	Federal	CON	\$740,993	\$0	\$0	\$0	\$740,993
FHWA (BRO)	Federal	CON	\$350,151	\$0	\$0	\$0	\$350,151
FHWA (STBG-U)	Federal	CON	\$800,000	\$0	\$0	\$0	\$800,000
LOCAL	Local	CON	\$595,814	\$0	\$0	\$0	\$595,814
SEMA	State	CON	\$123,499	\$0	\$0	\$0	\$123,499
Totals			\$2,796,148	\$0	\$0	\$0	\$2,796,148

Notes

Federal Funding Source: FEMA and FHWA

Non-Federal Funding Source: Ozark Special Road District; City of Ozark

FYI: \$400,000 Each Ozark and Christian County STBG-U

Prior Cost	\$227,270
Future Cost	\$0
Total Cost	\$3,023,418



Transportation Improvement Program - FY 2019-2022

Project Detail by Section and Project Number with Map

F) Roadways Section

TIP # OK1802-17A5 **RIVERSIDE BRIDGE**

Route Riverside
From Greenbridge
To Smallin

Location Christian County

Federal Agency FHWA

Project Sponsor City of Ozark

Federal Funding Category STBG-U

MoDOT Funding Category N/A

Bike/Ped Plan? Yes **EJ?** Yes

STIP #

Federal ID #



Project Description

Construct new Riverside Bridge with new alignment from Greenbridge Road to Smallin Road as a two-lane with bike/ped accommodations.

Fund Code	Source	Phase	FY2019	FY2020	FY2021	FY2022	Total
FEMA	Federal	ENG	\$9,085	\$0	\$0	\$0	\$9,085
FHWA (BRO)	Federal	ENG	\$8,998	\$0	\$0	\$0	\$8,998
FHWA (STBG-U)	Federal	ENG	\$9,808	\$0	\$0	\$0	\$9,808
LOCAL	Local	ENG	\$7,663	\$0	\$0	\$0	\$7,663
SEMA	State	ENG	\$1,514	\$0	\$0	\$0	\$1,514
FEMA	Federal	CON	\$151,413	\$0	\$0	\$0	\$151,413
FHWA (BRO)	Federal	CON	\$149,969	\$0	\$0	\$0	\$149,969
FHWA (STBG-U)	Federal	CON	\$163,470	\$0	\$0	\$0	\$163,470
LOCAL	Local	CON	\$127,712	\$0	\$0	\$0	\$127,712
SEMA	State	CON	\$25,236	\$0	\$0	\$0	\$25,236
Totals			\$654,868	\$0	\$0	\$0	\$654,868

Notes

Federal Funding Source: FEMA and FHWA

Non-Federal Funding Source: Ozark Special Road District; City of Ozark

FYI: \$400,000 Each Ozark and Christian County STBG-U

Prior Cost	\$2,368,550
Future Cost	\$0
Total Cost	\$3,023,418



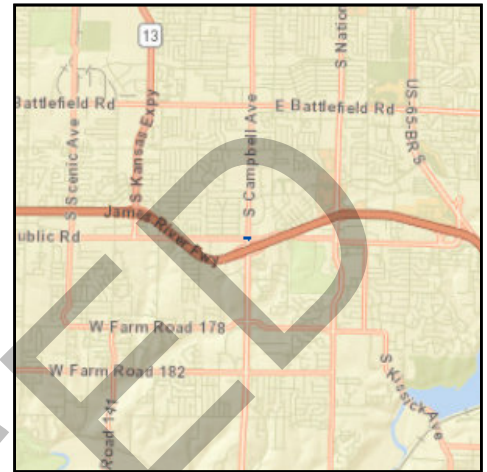
Transportation Improvement Program - FY 2019-2022

Project Detail by Section and Project Number with Map

K) Pending Amendment Section

TIP # SP1818-19A3 **CAMPBELL AND REPUBLIC ROAD INTERSECTION**

Route Campbell Avenue
From Campbell Avenue
To Republic Road
Location City of Springfield
Federal Agency FHWA
Project Sponsor City of Springfield
Federal Funding Category STBG
MoDOT Funding Category Major Projects and Emerging Needs
Bike/Ped Plan? Yes **EJ?** Yes
STIP # 8P3087C
Federal ID #



Project Description

Add lanes, replace sidewalk, replace signal at Campbell Avenue and Republic Road.

Fund Code	Source	Phase	FY2019	FY2020	FY2021	FY2022	Total
FHWA (NHPP)	Federal	ENG	\$8,000	\$0	\$0	\$0	\$8,000
LOCAL	Local	ENG	\$0	\$343,000	\$0	\$0	\$343,000
MoDOT	State	ENG	\$2,000	\$0	\$0	\$0	\$2,000
FHWA (STBG-U)	Federal	ROW	\$1,200,000	\$0	\$0	\$0	\$1,200,000
LOCAL	Local	ROW	\$320,000	\$0	\$0	\$0	\$320,000
FHWA (NHPP)	Federal	CON	\$0	\$1,875,200	\$0	\$0	\$1,875,200
FHWA (STBG-U)	Federal	CON	\$0	\$200,800	\$0	\$0	\$200,800
LOCAL	Local	CON	\$0	\$50,200	\$0	\$0	\$50,200
MoDOT	State	CON	\$0	\$468,800	\$0	\$0	\$468,800
Totals			\$1,530,000	\$2,938,000	\$0	\$0	\$4,468,000

Notes

Non-Federal Funding Source: State Transportation Revenues, City of Springfield Sales Tax

Prior Cost	\$260,000
Future Cost	\$0
Total Cost	\$4,728,000



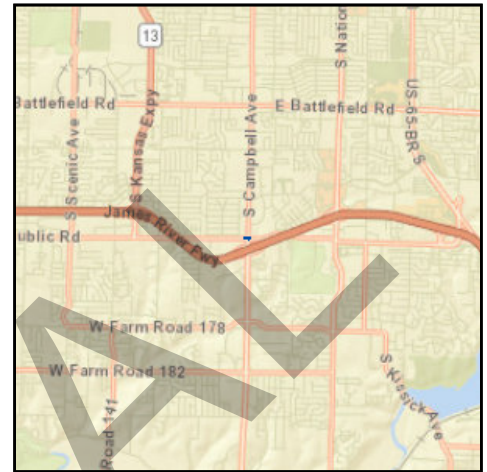
Transportation Improvement Program - FY 2019-2022

Project Detail by Section and Project Number with Map

F) Roadways Section

TIP # SP1818-18A4 **CAMPBELL AND REPUBLIC ROAD INTERSECTION**

Route Campbell Avenue
From Campbell Avenue
To Republic Road
Location City of Springfield
Federal Agency FHWA
Project Sponsor City of Springfield
Federal Funding Category STBG
MoDOT Funding Category Major Projects and Emerging Needs
Bike/Ped Plan? Yes **EJ?** Yes
STIP # 8P3087C
Federal ID #



Project Description

Add lanes, replace sidewalk, replace signal at Campbell Avenue and Republic Road.

Fund Code	Source	Phase	FY2019	FY2020	FY2021	FY2022	Total
FHWA (NHPP)	Federal	ENG	\$8,000	\$0	\$0	\$0	\$8,000
LOCAL	Local	ENG	\$343,000	\$0	\$0	\$0	\$343,000
MoDOT	State	ENG	\$2,000	\$0	\$0	\$0	\$2,000
FHWA (NHPP)	Federal	CON	\$1,875,200	\$0	\$0	\$0	\$1,875,200
FHWA (STBG-U)	Federal	CON	\$200,800	\$0	\$0	\$0	\$200,800
LOCAL	Local	CON	\$50,200	\$0	\$0	\$0	\$50,200
MoDOT	State	CON	\$468,800	\$0	\$0	\$0	\$468,800
Totals			\$2,948,000	\$0	\$0	\$0	\$2,948,000

Notes

Non-Federal Funding Source: State Transportation Revenues, City of Springfield Sales Tax

Prior Cost	\$1,780,000
Future Cost	\$0
Total Cost	\$4,728,000



Transportation Improvement Program - FY 2019-2022

Project Detail by Section and Project Number with Map

K) Pending Amendment Section

TIP # ST1901-19A3 **MO 125 DRAINAGE IMPROVEMENTS**

Route 125

From 0.2 mile e/o Rte. OO/Rte. 125 South Jct.

To 0.1 mile e/o Old Orchard Dr.

Location City of Strafford

Federal Agency FHWA

Project Sponsor MoDOT

Federal Funding Category STBG

MoDOT Funding Category Taking Care of the System

Bike/Ped Plan? EJ?

STIP # 8S3161

Federal ID #

Project Description

Scoping for drainage improvements from 0.2 mile east of the Rte. OO west junction to 0.1 mile east of Old Orchard Drive in Strafford.



Fund Code	Source	Phase	FY2019	FY2020	FY2021	FY2022	Total
FHWA (STBG)	Federal	ENG	\$1,600	\$1,600	\$0	\$0	\$3,200
MoDOT	State	ENG	\$400	\$400	\$0	\$0	\$800
Totals			\$2,000	\$2,000	\$0	\$0	\$4,000

Notes

Non-Federal Funding Source: State Transportation Revenues

Prior Cost	\$0
Future Cost	\$0
Total Cost	\$4,000

FINANCIAL SUMMARY

Bicycle & Pedestrian

YEARLY SUMMARY

		Federal			Local	State	
PROJECT	FHWA (TAP)	FHWA (STBG-U)	FHWA (STAP)	FHWA (STBG)	LOCAL	MoDOT	TOTAL
2019							
EN1513	\$0	\$488,494	\$0	\$0	\$122,122	\$0	\$610,616
EN1705	\$0	\$0	\$300,000	\$581,600	\$0	\$220,400	\$1,102,000
EN1706	\$0	\$0	\$0	\$8,800	\$0	\$2,200	\$11,000
EN1708-19A2	\$0	\$100,286	\$0	\$156,800	\$171,714	\$39,200	\$468,000
EN1801-18	\$0	\$0	\$0	\$120,800	\$0	\$30,200	\$151,000
EN1802-18	\$0	\$0	\$0	\$24,000	\$0	\$6,000	\$30,000
EN1803-18A3	\$0	\$2,000,000	\$0	\$0	\$500,000	\$0	\$2,500,000
EN1901-19	\$0	\$0	\$0	\$104,000	\$0	\$26,000	\$130,000
EN1902-19A2	\$265,075	\$0	\$0	\$0	\$66,269	\$0	\$331,344
EN1903-19A2	\$207,439	\$0	\$0	\$0	\$42,060	\$0	\$249,499
EN1904-19A3	\$28,000	\$0	\$0	\$0	\$7,000	\$0	\$35,000
EN1905-19A3	\$0	\$53,600	\$0	\$0	\$13,400	\$0	\$67,000
EN1906-19A3	\$0	\$17,570	\$0	\$0	\$4,392	\$0	\$21,962
EN1907-19A3	\$13,049	\$0	\$0	\$0	\$3,262	\$0	\$16,311
EN1908-19A3	\$27,766	\$0	\$0	\$0	\$6,941	\$0	\$34,707
EN1909-19A3	\$0	\$183,365	\$0	\$0	\$45,841	\$0	\$229,206
EN1912-19A3	\$85,911	\$0	\$0	\$0	\$21,478	\$0	\$107,389
EN1913-19A3	\$0	\$110,869	\$0	\$0	\$27,717	\$0	\$138,586
SUBTOTAL	\$627,240	\$2,954,184	\$300,000	\$996,000	\$1,032,196	\$324,000	\$6,233,620

FINANCIAL SUMMARY

Bicycle & Pedestrian

YEARLY SUMMARY

		Federal			Local	State	
PROJECT	FHWA (TAP)	FHWA (STBG-U)	FHWA (STAP)	FHWA (STBG)	LOCAL	MoDOT	TOTAL
2020							
EN1706	\$0	\$0	\$0	\$8,000	\$0	\$2,000	\$10,000
EN1801-18	\$0	\$0	\$264,000	\$509,600	\$0	\$193,400	\$967,000
EN1802-18	\$0	\$0	\$0	\$271,200	\$0	\$67,800	\$339,000
EN1901-19	\$0	\$0	\$0	\$272,000	\$0	\$68,000	\$340,000
EN2001-18	\$0	\$132,160	\$0	\$0	\$33,040	\$0	\$165,200
EN1904-19A3	\$272,000	\$0	\$0	\$0	\$68,000	\$0	\$340,000
EN1905-19A3	\$0	\$324,014	\$0	\$0	\$81,004	\$0	\$405,018
EN1906-19A3	\$0	\$187,990	\$0	\$0	\$46,998	\$0	\$234,988
EN1907-19A3	\$139,621	\$0	\$0	\$0	\$34,906	\$0	\$174,527
EN1908-19A3	\$297,093	\$0	\$0	\$0	\$74,274	\$0	\$371,367
EN1910-19A3	\$0	\$146,098	\$0	\$0	\$36,524	\$0	\$182,622
EN1911-19A3	\$72,708	\$0	\$0	\$0	\$18,177	\$0	\$90,885
SUBTOTAL	\$781,422	\$790,262	\$264,000	\$1,060,800	\$392,923	\$331,200	\$3,620,607
2021							
EN1706	\$0	\$0	\$0	\$8,000	\$0	\$2,000	\$10,000
EN1802-18	\$0	\$0	\$0	\$1,283,200	\$0	\$320,800	\$1,604,000
EN1901-19	\$0	\$0	\$313,000	\$1,137,400	\$0	\$362,600	\$1,813,000
EN2101-18	\$0	\$53,760	\$0	\$0	\$13,440	\$0	\$67,200
EN2102-18	\$0	\$74,368	\$0	\$0	\$18,592	\$0	\$92,960
SUBTOTAL	\$0	\$128,128	\$313,000	\$2,428,600	\$32,032	\$685,400	\$3,587,160
2022							
EN2201-19	\$0	\$0	\$276,800	\$0	\$0	\$69,200	\$346,000
SUBTOTAL	\$0	\$0	\$276,800	\$0	\$0	\$69,200	\$346,000
GRAND TOTAL	\$1,408,662	\$3,872,574	\$1,153,800	\$4,485,400	\$1,457,151	\$1,409,800	\$13,787,387

FINANCIAL CONSTRAINT

Bicycle & Pedestrian

	Federal (FHWA)				Local	MoDOT	TOTAL
	STBG-U	TAP	STBG	STAP			
PRIOR YEAR							
Balance	\$ 4,002,574	\$ 624,281	N/A	N/A	\$ -	\$ -	\$ 4,626,855
FY 2019							
Funds Anticipated	*See note below	\$ 438,053	\$996,000.00	\$300,000.00	\$ 1,032,196	\$ 324,000	\$ 3,090,249
Funds Programmed	(\$2,954,184.00)	(\$627,240)	(\$996,000.00)	(\$300,000.00)	(\$1,032,196.00)	(\$324,000.00)	(\$6,233,620.00)
Running Balance	\$1,048,390.00	\$435,094.24	\$0.00	\$0.00	\$0.00	\$0.00	\$1,483,484.24
FY 2020							
Funds Anticipated	*See note below	\$446,814.00	\$1,060,800.00	\$264,000.00	\$392,923.00	\$331,200.00	\$2,495,737.00
Funds Programmed	(\$790,262.00)	\$ (781,422.00)	(\$1,060,800.00)	(\$264,000.00)	(\$392,923.00)	(\$331,200.00)	(\$3,620,607.00)
Running Balance	\$258,128.00	\$100,486.24	\$0.00	\$0.00	\$0.00	\$0.00	\$358,614.24
FY 2021							
Funds Anticipated	*See note below	\$455,750.00	\$2,428,600.00	\$313,000.00	\$32,032.00	\$685,400.00	\$3,914,782.00
Funds Programmed	(\$128,128.00)	\$ -	(\$2,428,600.00)	(\$313,000.00)	(\$32,032.00)	(\$685,400.00)	(\$3,587,160.00)
Running Balance	\$130,000.00	\$556,236.24	\$0.00	\$0.00	\$0.00	\$0.00	\$686,236.24
FY 2022							
Funds Anticipated	*See note below	\$464,865.00	\$0.00	\$276,800.00	\$0.00	\$69,200.00	\$810,865.00
Funds Programmed	\$ -	\$ -	\$ -	(\$276,800.00)	\$ -	(\$69,200.00)	(\$346,000.00)
Running Balance	\$130,000.00	\$1,021,101.24	\$0.00	\$0.00	\$0.00	\$0.00	\$1,151,101.24

* STBG-Urban funds are available for use on both Bicycle/Pedestrian Projects and Roadway projects. Their distribution between these types of projects is not determined ahead of their programming by project. To see the entire amount of funding available for STBG-Urban, please visit page H-viii, Table H.2 or page H-10. STBG and STAP funding are statewide funding, with programming selected by MoDOT in consultation with OTO.

FINANCIAL SUMMARY

Roadways

YEARLY SUMMARY

PROJECT	Federal										Local	State			TOTAL
	FHWA (STBG-U)	FHWA (SAFETY)	FHWA (BRIDGE)	FHWA (I/M)	FHWA (130)	FHWA (BRM)	FHWA (BRO)	FHWA (NHPP)	FHWA (STBG)	FEMA	LOCAL	MoDOT	MoDOT-GCSA	SEMA	
2019															
BA1801-18	\$0	\$0	\$0	\$0	\$0	\$0	\$0	\$7,200	\$0	\$0	\$0	\$1,800	\$0	\$0	\$9,000
CC0901	\$0	\$0	\$0	\$0	\$0	\$0	\$0	\$0	\$1,600	\$0	\$0	\$400	\$0	\$0	\$2,000
CC1102	\$0	\$0	\$0	\$0	\$0	\$0	\$0	\$400,000	\$0	\$0	\$0	\$100,000	\$0	\$0	\$500,000
CC1703	\$0	\$0	\$0	\$0	\$0	\$0	\$0	\$0	\$4,000	\$0	\$0	\$1,000	\$0	\$0	\$5,000
CC1801	\$0	\$0	\$0	\$0	\$0	\$0	\$0	\$880,000	\$0	\$0	\$0	\$220,000	\$0	\$0	\$1,100,000
CC1802	\$0	\$0	\$0	\$0	\$0	\$0	\$0	\$40,000	\$0	\$0	\$0	\$10,000	\$0	\$0	\$50,000
CC1803-18	\$0	\$1,800	\$0	\$0	\$0	\$0	\$0	\$0	\$0	\$0	\$0	\$200	\$0	\$0	\$2,000
CC1901-19	\$0	\$0	\$0	\$0	\$0	\$0	\$0	\$1,600	\$0	\$0	\$0	\$400	\$0	\$0	\$2,000
CC1902-19	\$0	\$0	\$0	\$0	\$0	\$0	\$0	\$1,600	\$0	\$0	\$0	\$400	\$0	\$0	\$2,000
GR1403-18A1	\$0	\$0	\$0	\$0	\$0	\$0	\$0	\$8,000	\$0	\$0	\$0	\$2,000	\$0	\$0	\$10,000
GR1501	\$180,119	\$0	\$0	\$0	\$0	\$0	\$0	\$0	\$0	\$0	\$45,030	\$0	\$0	\$0	\$225,149
GR1701	\$0	\$0	\$0	\$0	\$0	\$0	\$0	\$0	\$7,568,000	\$0	\$0	\$1,892,000	\$0	\$0	\$9,460,000
GR1703	\$0	\$0	\$0	\$0	\$0	\$0	\$0	\$0	\$7,200	\$0	\$0	\$1,600	\$0	\$0	\$8,800
GR1704	\$0	\$0	\$0	\$0	\$0	\$0	\$0	\$0	\$640,000	\$0	\$0	\$160,000	\$0	\$0	\$800,000
GR1705	\$0	\$0	\$0	\$0	\$0	\$0	\$0	\$0	\$208,800	\$0	\$0	\$52,200	\$0	\$0	\$261,000
GR1707-17A6	\$0	\$0	\$0	\$0	\$0	\$0	\$0	\$0	\$0	\$0	\$51,000	\$0	\$0	\$0	\$51,000
GR1801-18	\$0	\$22,500	\$0	\$0	\$0	\$0	\$0	\$0	\$0	\$0	\$0	\$2,500	\$0	\$0	\$25,000
GR1804-18	\$0	\$0	\$0	\$0	\$0	\$0	\$0	\$67,200	\$0	\$0	\$0	\$16,800	\$0	\$0	\$84,000
GR1805-18	\$0	\$0	\$0	\$0	\$0	\$0	\$0	\$0	\$53,600	\$0	\$0	\$13,400	\$0	\$0	\$67,000
GR1901-19	\$10,156,075	\$0	\$0	\$0	\$0	\$0	\$0	\$0	\$0	\$0	\$2,539,018	\$0	\$0	\$0	\$12,695,093
GR1902-19	\$2,935,796	\$0	\$0	\$0	\$0	\$0	\$0	\$0	\$0	\$0	\$733,949	\$0	\$0	\$0	\$3,669,745
GR1903-19	\$0	\$0	\$0	\$0	\$0	\$0	\$0	\$1,600	\$0	\$0	\$0	\$400	\$0	\$0	\$2,000
GR1904-19	\$0	\$0	\$369,600	\$0	\$0	\$0	\$0	\$0	\$0	\$0	\$0	\$92,400	\$0	\$0	\$462,000
GR1905-19	\$0	\$0	\$0	\$22,500	\$0	\$0	\$0	\$0	\$0	\$0	\$0	\$2,500	\$0	\$0	\$25,000
GR1906-19	\$0	\$0	\$0	\$0	\$0	\$0	\$0	\$1,600	\$0	\$0	\$0	\$400	\$0	\$0	\$2,000
GR1907-19	\$0	\$0	\$0	\$0	\$0	\$0	\$0	\$4,000	\$0	\$0	\$0	\$1,000	\$0	\$0	\$5,000
GR1908-19	\$0	\$0	\$6,400	\$0	\$0	\$0	\$0	\$0	\$0	\$0	\$0	\$1,600	\$0	\$0	\$8,000
GR1909-19	\$0	\$0	\$60,000	\$0	\$0	\$0	\$0	\$0	\$0	\$0	\$0	\$15,000	\$0	\$0	\$75,000
GR1910-19	\$0	\$0	\$0	\$0	\$0	\$0	\$0	\$0	\$1,600	\$0	\$0	\$400	\$0	\$0	\$2,000
MO1105	\$0	\$0	\$0	\$0	\$0	\$0	\$0	\$0	\$0	\$0	\$0	\$292,000	\$0	\$0	\$292,000
MO1405	\$0	\$0	\$0	\$0	\$0	\$0	\$0	\$0	\$0	\$0	\$0	\$15,000	\$0	\$0	\$15,000
MO1709	\$0	\$162,900	\$0	\$0	\$0	\$0	\$0	\$0	\$0	\$0	\$0	\$18,100	\$0	\$0	\$181,000
MO1711	\$0	\$0	\$0	\$0	\$0	\$0	\$0	\$998,400	\$0	\$0	\$0	\$249,600	\$0	\$0	\$1,248,000
MO1717-18A5	\$324,000	\$0	\$0	\$0	\$0	\$0	\$0	\$0	\$800	\$0	\$81,000	\$200	\$0	\$0	\$406,000
MO1719	\$0	\$0	\$0	\$0	\$0	\$0	\$0	\$40,000	\$0	\$0	\$0	\$10,000	\$0	\$0	\$50,000
MO1720	\$0	\$0	\$0	\$0	\$0	\$0	\$0	\$4,000	\$0	\$0	\$0	\$1,000	\$0	\$0	\$5,000
MO1721	\$0	\$27,000	\$0	\$0	\$0	\$0	\$0	\$0	\$0	\$0	\$0	\$3,000	\$0	\$0	\$30,000
MO1722	\$0	\$0	\$0	\$0	\$0	\$0	\$0	\$40,000	\$0	\$0	\$0	\$10,000	\$0	\$0	\$50,000
MO1723	\$0	\$0	\$0	\$0	\$0	\$0	\$0	\$0	\$40,000	\$0	\$0	\$10,000	\$0	\$0	\$50,000
MO1803-18	\$0	\$900	\$0	\$0	\$0	\$0	\$0	\$0	\$0	\$0	\$0	\$100	\$0	\$0	\$1,000
MO1804-18	\$0	\$0	\$0	\$0	\$0	\$0	\$0	\$0	\$515,200	\$0	\$0	\$128,800	\$0	\$0	\$644,000
MO1805-18	\$0	\$0	\$0	\$0	\$0	\$0	\$0	\$0	\$1,328,000	\$0	\$0	\$332,000	\$0	\$0	\$1,660,000
MO1806-18	\$0	\$0	\$0	\$0	\$0	\$0	\$0	\$0	\$80,000	\$0	\$0	\$20,000	\$0	\$0	\$100,000
MO1902-19	\$0	\$0	\$0	\$197,100	\$0	\$0	\$0	\$0	\$0	\$0	\$0	\$21,900	\$0	\$0	\$219,000
MO1903-19	\$0	\$1,800	\$0	\$0	\$0	\$0	\$0	\$0	\$0	\$0	\$0	\$200	\$0	\$0	\$2,000
MO1904-19	\$0	\$0	\$0	\$0	\$0	\$0	\$0	\$1,600	\$0	\$0	\$0	\$400	\$0	\$0	\$2,000
MO1905-19	\$0	\$0	\$0	\$0	\$0	\$0	\$0	\$0	\$0	\$0	\$0	\$12,000	\$0	\$0	\$12,000
MO1906-19A3	\$0	\$0	\$0	\$0	\$0	\$0	\$0	\$177,600	\$0	\$0	\$0	\$44,400	\$0	\$0	\$222,000
NX1701	\$0	\$0	\$0	\$0	\$0	\$0	\$0	\$1,471,200	\$0	\$0	\$0	\$367,800	\$0	\$0	\$1,839,000
NX1702	\$0	\$0	\$0	\$0	\$0	\$0	\$0	\$331,200	\$4,923,200	\$0	\$0	\$1,313,600	\$0	\$0	\$6,568,000
NX1704	\$0	\$0	\$0	\$0	\$0	\$0	\$0	\$1,600	\$0	\$0	\$0	\$400	\$0	\$0	\$2,000
NX1705	\$0	\$0	\$0	\$0	\$0	\$0	\$0	\$3,668,800	\$0	\$0	\$0	\$917,200	\$0	\$0	\$4,586,000
NX1801-17A2	\$882,400	\$0	\$0	\$0	\$0	\$0	\$0	\$718,400	\$0	\$0	\$237,600	\$162,600	\$0	\$0	\$2,001,000
NX1802-19A2	\$180,000	\$0	\$0	\$0	\$0	\$0	\$0	\$0	\$0	\$0	\$183,660	\$0	\$0	\$0	\$363,660
NX1803-18A2	\$50,000	\$0	\$0	\$0	\$0	\$0	\$0	\$136,400	\$0	\$0	\$12,500	\$34,100	\$0	\$0	\$233,000

FY 2019 continued on next page

FINANCIAL SUMMARY

Roadways

YEARLY SUMMARY

	Federal										Local	State			
PROJECT	FHWA (STBG-U)	FHWA (SAFETY)	FHWA (BRIDGE)	FHWA (I/M)	FHWA (130)	FHWA (BRM)	FHWA (BRO)	FHWA (NHPP)	FHWA (STBG)	FEMA	LOCAL	MoDOT	MoDOT-GCSA	SEMA	TOTAL
2019 Continued															
NX1901-19	\$0	\$0	\$0	\$0	\$0	\$0	\$0	\$1,600	\$0	\$0	\$0	\$400	\$0	\$0	\$2,000
NX1902-19	\$0	\$0	\$0	\$0	\$0	\$0	\$0	\$6,400	\$0	\$0	\$0	\$1,600	\$0	\$0	\$8,000
OK1401-18AM4	\$313,000	\$0	\$0	\$0	\$0	\$0	\$0	\$0	\$309,600	\$0	\$78,000	\$77,400	\$0	\$0	\$778,000
OK1701	\$0	\$0	\$0	\$0	\$0	\$0	\$0	\$0	\$299,200	\$0	\$0	\$74,800	\$0	\$0	\$374,000
OK1702	\$0	\$0	\$0	\$0	\$0	\$0	\$0	\$0	\$2,979,200	\$0	\$172,212	\$572,588	\$0	\$0	\$3,724,000
OK1801-17A2	\$1,517,720	\$0	\$0	\$0	\$0	\$0	\$0	\$0	\$1,294,480	\$0	\$429,180	\$323,620	\$0	\$0	\$3,565,000
OK1802-19A3	\$800,000	\$0	\$0	\$0	\$0	\$0	\$506,655	\$0	\$0	\$740,993	\$625,001	\$0	\$0	\$123,499	\$2,796,148
OK1803	\$0	\$0	\$0	\$0	\$0	\$0	\$0	\$252,000	\$0	\$0	\$0	\$63,000	\$0	\$0	\$315,000
OK1901-19	\$0	\$0	\$0	\$0	\$0	\$0	\$0	\$1,600	\$0	\$0	\$0	\$400	\$0	\$0	\$2,000
RG0901-18A1	\$0	\$0	\$0	\$0	\$0	\$0	\$0	\$80,000	\$0	\$0	\$0	\$20,000	\$0	\$0	\$100,000
RP1701	\$0	\$0	\$0	\$0	\$0	\$0	\$0	\$8,000	\$0	\$0	\$0	\$2,000	\$0	\$0	\$10,000
RP1703-17A3	\$0	\$0	\$0	\$0	\$0	\$0	\$0	\$0	\$1,600	\$0	\$0	\$400	\$0	\$0	\$2,000
RP1704-17A3	\$0	\$0	\$0	\$0	\$0	\$0	\$0	\$0	\$1,600	\$0	\$0	\$400	\$0	\$0	\$2,000
RP1801-18AM1	\$992,800	\$0	\$0	\$0	\$0	\$0	\$0	\$0	\$851,200	\$0	\$248,200	\$212,800	\$0	\$0	\$2,305,000
RP1802-18	\$0	\$0	\$0	\$0	\$0	\$0	\$0	\$22,400	\$0	\$0	\$0	\$5,600	\$0	\$0	\$28,000
RP1803-18	\$0	\$0	\$0	\$0	\$0	\$0	\$0	\$8,800	\$0	\$0	\$0	\$2,200	\$0	\$0	\$11,000
SP1122	\$0	\$0	\$0	\$0	\$0	\$0	\$0	\$0	\$115,000	\$0	\$0	\$0	\$0	\$0	\$115,000
SP1401	\$0	\$0	\$0	\$0	\$0	\$0	\$0	\$1,600	\$0	\$0	\$0	\$400	\$0	\$0	\$2,000
SP1405-18A1	\$0	\$0	\$0	\$0	\$0	\$0	\$0	\$40,000	\$0	\$0	\$0	\$10,000	\$0	\$0	\$50,000
SP1413-19	\$0	\$0	\$0	\$0	\$0	\$0	\$0	\$0	\$32,000	\$0	\$0	\$8,000	\$0	\$0	\$40,000
SP1419-18A1	\$0	\$0	\$0	\$45,000	\$0	\$0	\$0	\$0	\$0	\$0	\$0	\$5,000	\$0	\$0	\$50,000
SP1605-17AM1	\$0	\$0	\$0	\$0	\$0	\$963,132	\$0	\$0	\$0	\$0	\$240,783	\$0	\$0	\$0	\$1,203,915
SP1704-18AM1	\$0	\$0	\$0	\$0	\$0	\$0	\$0	\$555,200	\$0	\$0	\$0	\$138,800	\$0	\$0	\$694,000
SP1705-18AM1	\$0	\$0	\$0	\$0	\$0	\$0	\$0	\$5,847,200	\$0	\$0	\$0	\$1,461,800	\$0	\$0	\$7,309,000
SP1707	\$0	\$0	\$0	\$0	\$0	\$0	\$0	\$0	\$445,600	\$0	\$0	\$111,400	\$0	\$0	\$557,000
SP1708	\$0	\$0	\$0	\$0	\$0	\$0	\$0	\$1,600	\$0	\$0	\$0	\$400	\$0	\$0	\$2,000
SP1709	\$0	\$0	\$0	\$0	\$0	\$0	\$0	\$16,000	\$0	\$0	\$0	\$4,000	\$0	\$0	\$20,000
SP1710	\$0	\$0	\$0	\$0	\$0	\$0	\$0	\$1,600	\$0	\$0	\$0	\$400	\$0	\$0	\$2,000
SP1714-17A2	\$1,600,000	\$0	\$0	\$0	\$0	\$0	\$0	\$0	\$0	\$0	\$400,000	\$0	\$0	\$0	\$2,000,000
SP1801-18	\$0	\$0	\$0	\$0	\$0	\$0	\$0	\$1,600	\$0	\$0	\$0	\$400	\$0	\$0	\$2,000
SP1802-18	\$0	\$0	\$0	\$0	\$0	\$0	\$0	\$1,600	\$0	\$0	\$0	\$400	\$0	\$0	\$2,000
SP1803-18	\$0	\$0	\$1,074,400	\$0	\$0	\$0	\$0	\$0	\$0	\$0	\$0	\$268,600	\$0	\$0	\$1,343,000
SP1805-18	\$0	\$0	\$0	\$22,500	\$0	\$0	\$0	\$0	\$0	\$0	\$0	\$2,500	\$0	\$0	\$25,000
SP1807-18	\$0	\$2,079,000	\$0	\$0	\$0	\$0	\$0	\$0	\$0	\$0	\$0	\$231,000	\$0	\$0	\$2,310,000
SP1809-18	\$0	\$0	\$0	\$0	\$0	\$0	\$0	\$20,000	\$0	\$0	\$0	\$5,000	\$0	\$0	\$25,000
SP1811-18	\$0	\$2,000	\$0	\$0	\$0	\$0	\$0	\$0	\$0	\$0	\$0	\$0	\$0	\$0	\$2,000
SP1812-18	\$0	\$2,000	\$0	\$0	\$0	\$0	\$0	\$0	\$0	\$0	\$0	\$0	\$0	\$0	\$2,000
SP1815-18A2	\$0	\$0	\$0	\$0	\$0	\$0	\$0	\$140,000	\$0	\$0	\$0	\$35,000	\$0	\$0	\$175,000
SP1816-18A2	\$0	\$0	\$0	\$0	\$0	\$0	\$0	\$4,000	\$0	\$0	\$0	\$1,000	\$0	\$0	\$5,000
SP1817-18A2	\$0	\$0	\$0	\$0	\$0	\$0	\$0	\$4,000	\$0	\$0	\$0	\$1,000	\$0	\$0	\$5,000
SP1818-19A3	\$1,200,000	\$0	\$0	\$0	\$0	\$0	\$0	\$8,000	\$0	\$0	\$320,000	\$2,000	\$0	\$0	\$1,530,000
SP1901-18	\$0	\$0	\$0	\$0	\$180,000	\$0	\$0	\$0	\$0	\$0	\$0	\$0	\$20,000	\$0	\$200,000
SP1902-18A4	\$1,200,000	\$0	\$0	\$0	\$0	\$0	\$0	\$0	\$0	\$0	\$300,000	\$0	\$0	\$0	\$1,500,000
SP1903-19	\$0	\$0	\$0	\$0	\$0	\$0	\$0	\$1,600	\$0	\$0	\$0	\$400	\$0	\$0	\$2,000
SP1904-19	\$0	\$0	\$0	\$0	\$0	\$0	\$0	\$1,600	\$0	\$0	\$0	\$400	\$0	\$0	\$2,000
SP1906-19	\$0	\$0	\$0	\$0	\$0	\$0	\$0	\$0	\$11,200	\$0	\$0	\$2,800	\$0	\$0	\$14,000
SP1907-19	\$0	\$0	\$0	\$0	\$0	\$0	\$0	\$1,120,000	\$0	\$0	\$0	\$280,000	\$0	\$0	\$1,400,000
SP1908-19A2	\$0	\$0	\$0	\$0	\$0	\$0	\$0	\$8,000	\$0	\$0	\$0	\$2,000	\$0	\$0	\$10,000
SP1909-19A2	\$0	\$0	\$0	\$0	\$0	\$0	\$0	\$200,000	\$0	\$0	\$0	\$50,000	\$0	\$0	\$250,000
SP1910-19A2	\$0	\$0	\$0	\$0	\$0	\$0	\$0	\$8,000	\$0	\$0	\$0	\$2,000	\$0	\$0	\$10,000
SP1911-19A2	\$0	\$0	\$0	\$0	\$0	\$0	\$0	\$8,000	\$0	\$0	\$0	\$2,000	\$0	\$0	\$10,000
ST1901-19A3	\$0	\$0	\$0	\$0	\$0	\$0	\$0	\$0	\$1,600	\$0	\$0	\$400	\$0	\$0	\$2,000
WI1001-17A2	\$0	\$0	\$0	\$0	\$0	\$0	\$0	\$0	\$12,000	\$0	\$0	\$3,000	\$0	\$0	\$15,000
WI1701-17AM1	\$733,896	\$0	\$0	\$0	\$0	\$0	\$0	\$0	\$0	\$0	\$292,354	\$0	\$0	\$0	\$1,026,250
WI1801-18	\$0	\$0	\$0	\$0	\$0	\$0	\$0	\$0	\$6,364,800	\$0	\$0	\$1,591,200	\$0	\$0	\$7,956,000
SUBTOTAL	\$23,065,806	\$2,299,900	\$1,510,400	\$287,100	\$180,000	\$963,132	\$506,655	\$17,372,400	\$28,091,080	\$740,993	\$6,989,487	\$12,131,308	\$20,000	\$123,499	\$94,281,760

FINANCIAL SUMMARY

Roadways

YEARLY SUMMARY

	Federal										Local	State			
PROJECT	FHWA (STBG-U)	FHWA (SAFETY)	FHWA (BRIDGE)	FHWA (I/M)	FHWA (130)	FHWA (BRM)	FHWA (BRO)	FHWA (NHPP)	FHWA (STBG)	FEMA	LOCAL	MoDOT	MoDOT-GCSA	SEMA	TOTAL
2020															
BA1801-18	\$0	\$0	\$0	\$0	\$0	\$0	\$0	\$597,600	\$0	\$0	\$0	\$149,400	\$0	\$0	\$747,000
CC0901	\$0	\$0	\$0	\$0	\$0	\$0	\$0	\$0	\$800	\$0	\$0	\$200	\$0	\$0	\$1,000
CC1102	\$0	\$0	\$0	\$0	\$0	\$0	\$0	\$1,600	\$0	\$0	\$0	\$400	\$0	\$0	\$2,000
CC1703	\$0	\$0	\$0	\$0	\$0	\$0	\$0	\$0	\$4,000	\$0	\$0	\$1,000	\$0	\$0	\$5,000
CC1802	\$0	\$0	\$0	\$0	\$0	\$0	\$0	\$40,000	\$0	\$0	\$0	\$10,000	\$0	\$0	\$50,000
CC1803-18	\$0	\$1,800	\$0	\$0	\$0	\$0	\$0	\$0	\$0	\$0	\$0	\$200	\$0	\$0	\$2,000
CC1901-19	\$0	\$0	\$0	\$0	\$0	\$0	\$0	\$1,600	\$0	\$0	\$0	\$400	\$0	\$0	\$2,000
CC1902-19	\$0	\$0	\$0	\$0	\$0	\$0	\$0	\$1,600	\$0	\$0	\$0	\$400	\$0	\$0	\$2,000
GR1403-18A1	\$0	\$0	\$0	\$0	\$0	\$0	\$0	\$8,000	\$0	\$0	\$0	\$2,000	\$0	\$0	\$10,000
GR1703	\$0	\$0	\$0	\$0	\$0	\$0	\$0	\$0	\$133,600	\$0	\$0	\$33,400	\$0	\$0	\$167,000
GR1704	\$0	\$0	\$0	\$0	\$0	\$0	\$0	\$0	\$1,600	\$0	\$0	\$400	\$0	\$0	\$2,000
GR1707-17A6	\$0	\$0	\$0	\$0	\$0	\$0	\$0	\$0	\$0	\$0	\$1,000	\$0	\$0	\$0	\$1,000
GR1801-18	\$0	\$22,500	\$0	\$0	\$0	\$0	\$0	\$0	\$0	\$0	\$0	\$2,500	\$0	\$0	\$25,000
GR1804-18	\$0	\$0	\$0	\$0	\$0	\$0	\$0	\$1,056,000	\$0	\$0	\$0	\$264,000	\$0	\$0	\$1,320,000
GR1901-19	\$5,935,589	\$0	\$0	\$0	\$0	\$0	\$0	\$0	\$0	\$0	\$5,064,411	\$0	\$0	\$0	\$11,000,000
GR1903-19	\$0	\$0	\$0	\$0	\$0	\$0	\$0	\$29,600	\$0	\$0	\$0	\$7,400	\$0	\$0	\$37,000
GR1905-19	\$0	\$0	\$0	\$22,500	\$0	\$0	\$0	\$0	\$0	\$0	\$0	\$2,500	\$0	\$0	\$25,000
GR1906-19	\$0	\$0	\$0	\$0	\$0	\$0	\$0	\$88,800	\$0	\$0	\$0	\$22,200	\$0	\$0	\$111,000
GR1907-19	\$0	\$0	\$0	\$0	\$0	\$0	\$0	\$8,000	\$0	\$0	\$0	\$2,000	\$0	\$0	\$10,000
GR1908-19	\$0	\$0	\$18,400	\$0	\$0	\$0	\$0	\$0	\$0	\$0	\$0	\$4,600	\$0	\$0	\$23,000
GR1909-19	\$0	\$0	\$60,000	\$0	\$0	\$0	\$0	\$0	\$0	\$0	\$0	\$15,000	\$0	\$0	\$75,000
GR1910-19	\$0	\$0	\$0	\$0	\$0	\$0	\$0	\$0	\$4,000	\$0	\$0	\$2,000	\$0	\$0	\$6,000
GR1911-19	\$0	\$0	\$0	\$0	\$45,000	\$0	\$0	\$0	\$0	\$0	\$0	\$0	\$5,000	\$0	\$50,000
MO1105	\$0	\$0	\$0	\$0	\$0	\$0	\$0	\$0	\$0	\$0	\$0	\$292,000	\$0	\$0	\$292,000
MO1405	\$0	\$0	\$0	\$0	\$0	\$0	\$0	\$0	\$0	\$0	\$0	\$15,000	\$0	\$0	\$15,000
MO1719	\$0	\$0	\$0	\$0	\$0	\$0	\$0	\$40,000	\$0	\$0	\$0	\$10,000	\$0	\$0	\$50,000
MO1720	\$0	\$0	\$0	\$0	\$0	\$0	\$0	\$4,000	\$0	\$0	\$0	\$1,000	\$0	\$0	\$5,000
MO1721	\$0	\$54,000	\$0	\$0	\$0	\$0	\$0	\$0	\$0	\$0	\$0	\$6,000	\$0	\$0	\$60,000
MO1722	\$0	\$0	\$0	\$0	\$0	\$0	\$0	\$40,000	\$0	\$0	\$0	\$10,000	\$0	\$0	\$50,000
MO1723	\$0	\$0	\$0	\$0	\$0	\$0	\$0	\$0	\$40,000	\$0	\$0	\$10,000	\$0	\$0	\$50,000
MO1803-18	\$0	\$161,100	\$0	\$0	\$0	\$0	\$0	\$0	\$0	\$0	\$0	\$17,900	\$0	\$0	\$179,000
MO1804-18	\$332,000	\$0	\$0	\$0	\$0	\$0	\$0	\$0	\$800	\$0	\$83,000	\$200	\$0	\$0	\$416,000
MO1806-18	\$0	\$0	\$0	\$0	\$0	\$0	\$0	\$0	\$90,400	\$0	\$0	\$22,600	\$0	\$0	\$113,000
MO1903-19	\$0	\$241,200	\$0	\$0	\$0	\$0	\$0	\$0	\$0	\$0	\$0	\$26,800	\$0	\$0	\$268,000
MO1904-19	\$0	\$0	\$0	\$0	\$0	\$0	\$0	\$1,600	\$0	\$0	\$0	\$400	\$0	\$0	\$2,000
MO1905-19	\$0	\$0	\$0	\$0	\$0	\$0	\$0	\$0	\$0	\$0	\$0	\$35,000	\$0	\$0	\$35,000
MO2101-18	\$0	\$0	\$0	\$0	\$0	\$0	\$0	\$0	\$514,400	\$0	\$0	\$128,600	\$0	\$0	\$643,000
NX1701	\$0	\$0	\$0	\$0	\$0	\$0	\$0	\$5,341,600	\$0	\$0	\$0	\$1,335,400	\$0	\$0	\$6,677,000
NX1704	\$0	\$0	\$0	\$0	\$0	\$0	\$0	\$1,600	\$0	\$0	\$0	\$400	\$0	\$0	\$2,000
NX1803-18A2	\$1,065,108	\$0	\$0	\$0	\$0	\$0	\$0	\$838,892	\$0	\$0	\$266,277	\$209,723	\$0	\$0	\$2,380,000
NX1901-19	\$0	\$0	\$0	\$0	\$0	\$0	\$0	\$11,200	\$0	\$0	\$0	\$2,800	\$0	\$0	\$14,000
NX1902-19	\$0	\$0	\$0	\$0	\$0	\$0	\$0	\$62,400	\$0	\$0	\$0	\$15,600	\$0	\$0	\$78,000
OK1401-18AM4	\$1,350,000	\$0	\$0	\$0	\$0	\$0	\$0	\$0	\$1,334,400	\$0	\$143,000	\$333,600	\$0	\$0	\$3,161,000
OK1701	\$0	\$835,000	\$0	\$0	\$0	\$0	\$0	\$0	\$2,551,200	\$0	\$0	\$637,800	\$0	\$0	\$4,024,000
OK1803	\$0	\$0	\$0	\$0	\$0	\$0	\$0	\$1,945,600	\$0	\$0	\$0	\$486,400	\$0	\$0	\$2,432,000
OK1901-19	\$0	\$0	\$0	\$0	\$0	\$0	\$0	\$36,000	\$0	\$0	\$0	\$9,000	\$0	\$0	\$45,000
RG0901-18A1	\$0	\$0	\$0	\$0	\$0	\$0	\$0	\$400,000	\$0	\$0	\$0	\$100,000	\$0	\$0	\$500,000
RP1701	\$0	\$0	\$0	\$0	\$0	\$0	\$0	\$8,000	\$0	\$0	\$0	\$2,000	\$0	\$0	\$10,000
RP1703-17A3	\$0	\$0	\$0	\$0	\$0	\$0	\$0	\$0	\$1,600	\$0	\$0	\$400	\$0	\$0	\$2,000
RP1704-17A3	\$0	\$0	\$0	\$0	\$0	\$0	\$0	\$0	\$1,600	\$0	\$0	\$400	\$0	\$0	\$2,000
RP1802-18	\$0	\$0	\$0	\$0	\$0	\$0	\$0	\$1,615,200	\$0	\$0	\$0	\$403,800	\$0	\$0	\$2,019,000

FY 2020 continued on next page

FINANCIAL SUMMARY

Roadways

YEARLY SUMMARY

	Federal										Local	State			
PROJECT	FHWA (STBG-U)	FHWA (SAFETY)	FHWA (BRIDGE)	FHWA (VM)	FHWA (130)	FHWA (BRM)	FHWA (BRO)	FHWA (NHPP)	FHWA (STBG)	FEMA	LOCAL	MoDOT	MoDOT-GCSA	SEMA	TOTAL
2020 Continued															
RP1803-18	\$0	\$0	\$0	\$0	\$0	\$0	\$0	\$688,800	\$0	\$0	\$0	\$172,200	\$0	\$0	\$861,000
SP1401	\$0	\$0	\$0	\$0	\$0	\$0	\$0	\$5,600	\$0	\$0	\$0	\$1,400	\$0	\$0	\$7,000
SP1405-18A1	\$0	\$0	\$0	\$0	\$0	\$0	\$0	\$40,000	\$0	\$0	\$0	\$10,000	\$0	\$0	\$50,000
SP1413-19	\$0	\$0	\$0	\$0	\$0	\$0	\$0	\$0	\$39,200	\$0	\$0	\$9,800	\$0	\$0	\$49,000
SP1419-18A1	\$0	\$0	\$0	\$9,000	\$0	\$0	\$0	\$0	\$0	\$0	\$0	\$1,000	\$0	\$0	\$10,000
SP1708	\$0	\$0	\$0	\$0	\$0	\$0	\$0	\$1,600	\$0	\$0	\$0	\$400	\$0	\$0	\$2,000
SP1709	\$0	\$0	\$0	\$0	\$0	\$0	\$0	\$16,000	\$0	\$0	\$0	\$4,000	\$0	\$0	\$20,000
SP1710	\$0	\$0	\$0	\$0	\$0	\$0	\$0	\$3,200	\$0	\$0	\$0	\$800	\$0	\$0	\$4,000
SP1801-18	\$0	\$0	\$0	\$0	\$0	\$0	\$0	\$1,600	\$0	\$0	\$0	\$400	\$0	\$0	\$2,000
SP1802-18	\$0	\$0	\$0	\$0	\$0	\$0	\$0	\$1,600	\$0	\$0	\$0	\$400	\$0	\$0	\$2,000
SP1805-18	\$0	\$0	\$0	\$1,504,800	\$0	\$0	\$0	\$0	\$0	\$0	\$0	\$167,200	\$0	\$0	\$1,672,000
SP1809-18	\$0	\$0	\$0	\$0	\$0	\$0	\$0	\$1,497,600	\$0	\$0	\$0	\$374,400	\$0	\$0	\$1,872,000
SP1811-18	\$0	\$2,000	\$0	\$0	\$0	\$0	\$0	\$0	\$0	\$0	\$0	\$0	\$0	\$0	\$2,000
SP1812-18	\$0	\$2,000	\$0	\$0	\$0	\$0	\$0	\$0	\$0	\$0	\$0	\$0	\$0	\$0	\$2,000
SP1815-18A2	\$0	\$0	\$0	\$0	\$0	\$0	\$0	\$20,000	\$0	\$0	\$0	\$5,000	\$0	\$0	\$25,000
SP1816-18A2	\$0	\$0	\$0	\$0	\$0	\$0	\$0	\$58,400	\$0	\$0	\$0	\$14,600	\$0	\$0	\$73,000
SP1817-18A2	\$0	\$0	\$0	\$0	\$0	\$0	\$0	\$55,200	\$0	\$0	\$0	\$13,800	\$0	\$0	\$69,000
SP1818-19A3	\$200,800	\$0	\$0	\$0	\$0	\$0	\$0	\$1,875,200	\$0	\$0	\$393,200	\$468,800	\$0	\$0	\$2,938,000
SP1903-19	\$0	\$0	\$0	\$0	\$0	\$0	\$0	\$9,600	\$0	\$0	\$0	\$2,400	\$0	\$0	\$12,000
SP1904-19	\$0	\$0	\$0	\$0	\$0	\$0	\$0	\$16,000	\$0	\$0	\$0	\$4,000	\$0	\$0	\$20,000
SP1906-19	\$0	\$0	\$0	\$0	\$0	\$0	\$0	\$0	\$6,400	\$0	\$0	\$1,600	\$0	\$0	\$8,000
SP1907-19	\$0	\$995,000	\$0	\$0	\$0	\$0	\$0	\$11,779,400	\$0	\$0	\$0	\$3,193,600	\$0	\$0	\$15,968,000
SP1908-19A2	\$0	\$0	\$0	\$0	\$0	\$0	\$0	\$8,000	\$0	\$0	\$0	\$2,000	\$0	\$0	\$10,000
SP1909-19A2	\$0	\$0	\$0	\$0	\$0	\$0	\$0	\$40,000	\$0	\$0	\$0	\$10,000	\$0	\$0	\$50,000
SP1910-19A2	\$0	\$0	\$0	\$0	\$0	\$0	\$0	\$4,000	\$0	\$0	\$0	\$1,000	\$0	\$0	\$5,000
SP1911-19A2	\$0	\$0	\$0	\$0	\$0	\$0	\$0	\$8,000	\$0	\$0	\$0	\$2,000	\$0	\$0	\$10,000
ST1901-19A3	\$0	\$0	\$0	\$0	\$0	\$0	\$0	\$0	\$1,600	\$0	\$0	\$400	\$0	\$0	\$2,000
SUBTOTAL	\$8,883,497	\$2,314,600	\$78,400	\$1,536,300	\$45,000	\$0	\$0	\$28,308,692	\$4,724,000	\$0	\$5,950,888	\$9,093,623	\$5,000	\$0	\$60,940,000
2021															
CC1703	\$0	\$0	\$0	\$0	\$0	\$0	\$0	\$0	\$4,000	\$0	\$0	\$1,000	\$0	\$0	\$5,000
CC1802	\$0	\$0	\$0	\$0	\$0	\$0	\$0	\$252,800	\$0	\$0	\$0	\$63,200	\$0	\$0	\$316,000
CC1803-18	\$0	\$1,800	\$0	\$0	\$0	\$0	\$0	\$0	\$0	\$0	\$0	\$200	\$0	\$0	\$2,000
CC1901-19	\$0	\$0	\$0	\$0	\$0	\$0	\$0	\$1,600	\$0	\$0	\$0	\$400	\$0	\$0	\$2,000
CC1902-19	\$0	\$0	\$0	\$0	\$0	\$0	\$0	\$1,600	\$0	\$0	\$0	\$400	\$0	\$0	\$2,000
GR1403-18A1	\$0	\$0	\$0	\$0	\$0	\$0	\$0	\$8,000	\$0	\$0	\$0	\$2,000	\$0	\$0	\$10,000
GR1707-17A6	\$0	\$0	\$0	\$0	\$0	\$0	\$0	\$0	\$0	\$0	\$1,000	\$0	\$0	\$0	\$1,000
GR1903-19	\$0	\$0	\$0	\$0	\$0	\$0	\$0	\$1,872,800	\$0	\$0	\$0	\$468,200	\$0	\$0	\$2,341,000
GR1905-19	\$0	\$0	\$0	\$2,866,500	\$0	\$0	\$0	\$0	\$0	\$0	\$0	\$318,500	\$0	\$0	\$3,185,000
GR1906-19	\$0	\$0	\$0	\$0	\$0	\$0	\$0	\$1,380,000	\$0	\$0	\$0	\$345,000	\$0	\$0	\$1,725,000
GR1907-19	\$0	\$0	\$0	\$0	\$0	\$0	\$0	\$93,600	\$0	\$0	\$0	\$23,400	\$0	\$0	\$117,000
GR1908-19	\$0	\$0	\$267,200	\$0	\$0	\$0	\$0	\$0	\$0	\$0	\$0	\$66,800	\$0	\$0	\$334,000
GR1909-19	\$0	\$0	\$1,164,800	\$0	\$0	\$0	\$0	\$0	\$0	\$0	\$0	\$291,200	\$0	\$0	\$1,456,000
GR1910-19	\$0	\$0	\$0	\$0	\$0	\$0	\$0	\$0	\$527,200	\$0	\$0	\$131,800	\$0	\$0	\$659,000
GR1912-19	\$0	\$0	\$0	\$0	\$225,000	\$0	\$0	\$0	\$0	\$0	\$0	\$0	\$25,000	\$0	\$250,000
MO1105	\$0	\$0	\$0	\$0	\$0	\$0	\$0	\$0	\$0	\$0	\$0	\$292,000	\$0	\$0	\$292,000
MO1405	\$0	\$0	\$0	\$0	\$0	\$0	\$0	\$0	\$0	\$0	\$0	\$15,000	\$0	\$0	\$15,000
MO1719	\$0	\$0	\$0	\$0	\$0	\$0	\$0	\$40,000	\$0	\$0	\$0	\$10,000	\$0	\$0	\$50,000
MO1720	\$0	\$0	\$0	\$0	\$0	\$0	\$0	\$3,200	\$0	\$0	\$0	\$800	\$0	\$0	\$4,000
MO1721	\$0	\$54,000	\$0	\$0	\$0	\$0	\$0	\$0	\$0	\$0	\$0	\$6,000	\$0	\$0	\$60,000
MO1722	\$0	\$0	\$0	\$0	\$0	\$0	\$0	\$40,000	\$0	\$0	\$0	\$10,000	\$0	\$0	\$50,000
MO1723	\$0	\$0	\$0	\$0	\$0	\$0	\$0	\$0	\$40,000	\$0	\$0	\$10,000	\$0	\$0	\$50,000
MO1806-18	\$0	\$527,000	\$0	\$0	\$0	\$0	\$0	\$0	\$1,750,600	\$0	\$0	\$569,400	\$0	\$0	\$2,847,000
MO1904-19	\$0	\$0	\$0	\$0	\$0	\$0	\$0	\$484,800	\$0	\$0	\$0	\$121,200	\$0	\$0	\$606,000
MO1905-19	\$0	\$0	\$0	\$0	\$0	\$0	\$0	\$0	\$0	\$0	\$0	\$12,000	\$0	\$0	\$12,000
MO2101-18	\$340,000	\$0	\$0	\$0	\$0	\$0	\$0	\$0	\$0	\$0	\$85,000	\$1,000	\$0	\$0	\$426,000
MO2102-19	\$0	\$412,200	\$0	\$0	\$0	\$0	\$0	\$0	\$0	\$0	\$0	\$45,800	\$0	\$0	\$458,000

FY 2021 continued on next page

FINANCIAL SUMMARY

Roadways

YEARLY SUMMARY

	Federal										Local	State			
PROJECT	FHWA (STBG-U)	FHWA (SAFETY)	FHWA (BRIDGE)	FHWA (I/M)	FHWA (130)	FHWA (BRM)	FHWA (BRO)	FHWA (NHPP)	FHWA (STBG)	FEMA	LOCAL	MoDOT	MoDOT-GCSA	SEMA	TOTAL
2021 Continued															
MO2103-19	\$0	\$160,200	\$0	\$0	\$0	\$0	\$0	\$0	\$0	\$0	\$0	\$17,800	\$0	\$0	\$178,000
NX1901-19	\$0	\$0	\$0	\$0	\$0	\$0	\$0	\$857,600	\$0	\$0	\$0	\$214,400	\$0	\$0	\$1,072,000
OK1901-19	\$0	\$0	\$0	\$0	\$0	\$0	\$0	\$2,323,200	\$0	\$0	\$0	\$580,800	\$0	\$0	\$2,904,000
RG0901-18A1	\$0	\$0	\$0	\$0	\$0	\$0	\$0	\$581,600	\$0	\$0	\$0	\$145,400	\$0	\$0	\$727,000
RP1701	\$0	\$0	\$0	\$0	\$0	\$0	\$0	\$8,000	\$0	\$0	\$0	\$2,000	\$0	\$0	\$10,000
RP1703-17A3	\$0	\$0	\$0	\$0	\$0	\$0	\$0	\$0	\$1,600	\$0	\$0	\$400	\$0	\$0	\$2,000
RP1704-17A3	\$0	\$0	\$0	\$0	\$0	\$0	\$0	\$0	\$1,600	\$0	\$0	\$400	\$0	\$0	\$2,000
SP1401	\$0	\$0	\$0	\$0	\$0	\$0	\$0	\$8,000	\$0	\$0	\$0	\$2,000	\$0	\$0	\$10,000
SP1413-19	\$0	\$0	\$0	\$0	\$0	\$0	\$0	\$0	\$417,600	\$0	\$0	\$104,400	\$0	\$0	\$522,000
SP1419-18A1	\$0	\$0	\$0	\$9,000	\$0	\$0	\$0	\$0	\$0	\$0	\$0	\$1,000	\$0	\$0	\$10,000
SP1708	\$0	\$0	\$0	\$0	\$0	\$0	\$0	\$812,000	\$0	\$0	\$0	\$203,000	\$0	\$0	\$1,015,000
SP1709	\$0	\$0	\$0	\$0	\$0	\$0	\$0	\$16,000	\$0	\$0	\$0	\$4,000	\$0	\$0	\$20,000
SP1710	\$0	\$0	\$0	\$0	\$0	\$0	\$0	\$676,000	\$0	\$0	\$0	\$169,000	\$0	\$0	\$845,000
SP1811-18	\$0	\$2,000	\$0	\$0	\$0	\$0	\$0	\$0	\$0	\$0	\$0	\$0	\$0	\$0	\$2,000
SP1812-18	\$0	\$2,000	\$0	\$0	\$0	\$0	\$0	\$0	\$0	\$0	\$0	\$0	\$0	\$0	\$2,000
SP1816-18A2	\$0	\$0	\$0	\$0	\$0	\$0	\$0	\$44,000	\$0	\$0	\$0	\$11,000	\$0	\$0	\$55,000
SP1817-18A2	\$0	\$0	\$0	\$0	\$0	\$0	\$0	\$56,000	\$0	\$0	\$0	\$14,000	\$0	\$0	\$70,000
SP1903-19	\$0	\$0	\$0	\$0	\$0	\$0	\$0	\$738,400	\$0	\$0	\$0	\$184,600	\$0	\$0	\$923,000
SP1904-19	\$0	\$0	\$0	\$0	\$0	\$0	\$0	\$1,124,000	\$0	\$0	\$0	\$281,000	\$0	\$0	\$1,405,000
SP1906-19	\$0	\$0	\$0	\$0	\$0	\$0	\$0	\$0	\$1,039,200	\$0	\$0	\$259,800	\$0	\$0	\$1,299,000
SUBTOTAL	\$340,000	\$1,159,200	\$1,432,000	\$2,875,500	\$225,000	\$0	\$0	\$11,423,200	\$3,781,800	\$0	\$86,000	\$5,000,300	\$25,000	\$0	\$26,348,000
2022															
CC1802	\$0	\$0	\$0	\$0	\$0	\$0	\$0	\$3,593,600	\$0	\$0	\$0	\$898,400	\$0	\$0	\$4,492,000
CC1803-18	\$0	\$1,800	\$0	\$0	\$0	\$0	\$0	\$0	\$0	\$0	\$0	\$200	\$0	\$0	\$2,000
CC1901-19	\$0	\$0	\$0	\$0	\$0	\$0	\$0	\$1,600	\$0	\$0	\$0	\$400	\$0	\$0	\$2,000
CC1902-19	\$0	\$0	\$0	\$0	\$0	\$0	\$0	\$1,600	\$0	\$0	\$0	\$400	\$0	\$0	\$2,000
GR1502	\$0	\$0	\$0	\$0	\$0	\$0	\$0	\$0	\$0	\$0	\$1,000,000	\$0	\$0	\$0	\$1,000,000
GR1707-17A6	\$0	\$0	\$0	\$0	\$0	\$0	\$0	\$0	\$0	\$0	\$1,000	\$0	\$0	\$0	\$1,000
GR1902-19	\$3,246,479	\$0	\$0	\$0	\$0	\$0	\$0	\$0	\$0	\$0	\$1,253,521	\$0	\$0	\$0	\$4,500,000
GR1907-19	\$0	\$0	\$0	\$0	\$0	\$0	\$0	\$1,696,000	\$0	\$0	\$0	\$424,000	\$0	\$0	\$2,120,000
MO1105	\$0	\$0	\$0	\$0	\$0	\$0	\$0	\$0	\$0	\$0	\$0	\$292,000	\$0	\$0	\$292,000
MO1405	\$0	\$0	\$0	\$0	\$0	\$0	\$0	\$0	\$0	\$0	\$0	\$15,000	\$0	\$0	\$15,000
MO1719	\$0	\$0	\$0	\$0	\$0	\$0	\$0	\$40,000	\$0	\$0	\$0	\$10,000	\$0	\$0	\$50,000
MO1721	\$0	\$54,000	\$0	\$0	\$0	\$0	\$0	\$0	\$0	\$0	\$0	\$6,000	\$0	\$0	\$60,000
MO1722	\$0	\$0	\$0	\$0	\$0	\$0	\$0	\$40,000	\$0	\$0	\$0	\$10,000	\$0	\$0	\$50,000
MO1723	\$0	\$0	\$0	\$0	\$0	\$0	\$0	\$0	\$40,000	\$0	\$0	\$10,000	\$0	\$0	\$50,000
MO1904-19	\$0	\$0	\$0	\$0	\$0	\$0	\$0	\$1,514,400	\$0	\$0	\$0	\$378,600	\$0	\$0	\$1,893,000
MO1905-19	\$0	\$0	\$0	\$0	\$0	\$0	\$0	\$0	\$0	\$0	\$0	\$23,500	\$0	\$0	\$23,500
RG0901-18A1	\$0	\$6,688,000	\$0	\$0	\$0	\$0	\$0	\$4,554,400	\$0	\$0	\$0	\$2,810,600	\$0	\$0	\$14,053,000
RP1703-17A3	\$0	\$0	\$0	\$0	\$0	\$0	\$0	\$0	\$1,600	\$0	\$0	\$400	\$0	\$0	\$2,000
RP1704-17A3	\$0	\$0	\$0	\$0	\$0	\$0	\$0	\$0	\$1,600	\$0	\$0	\$400	\$0	\$0	\$2,000
SP1401	\$0	\$0	\$0	\$0	\$0	\$0	\$0	\$432,000	\$0	\$0	\$0	\$108,000	\$0	\$0	\$540,000
SP1811-18	\$0	\$2,000	\$0	\$0	\$0	\$0	\$0	\$0	\$0	\$0	\$0	\$0	\$0	\$0	\$2,000
SP1812-18	\$0	\$2,000	\$0	\$0	\$0	\$0	\$0	\$0	\$0	\$0	\$0	\$0	\$0	\$0	\$2,000
SP1816-18A2	\$0	\$0	\$0	\$0	\$0	\$0	\$0	\$4,000	\$0	\$0	\$0	\$1,000	\$0	\$0	\$5,000
SP1817-18A2	\$0	\$0	\$0	\$0	\$0	\$0	\$0	\$1,600	\$0	\$0	\$0	\$400	\$0	\$0	\$2,000
SUBTOTAL	\$3,246,479	\$6,747,800	\$0	\$0	\$0	\$0	\$0	\$11,879,200	\$43,200	\$0	\$2,254,521	\$4,989,300	\$0	\$0	\$29,160,500
GRAND TOTAL	\$35,535,782	\$12,521,500	\$3,020,800	\$4,698,900	\$450,000	\$963,132	\$506,655	\$68,983,492	\$36,640,080	\$740,993	\$15,280,896	\$31,214,531	\$50,000	\$123,499	\$210,730,260

FINANCIAL CONSTRAINT

Roadways

	Federal Funding Source											Local	MoDOT Programmed Funds	Other	State Operations and Maintenance	TOTAL
	STBG-U	Safety	Bridge	I/M	130	BRM	BRO	NHPP	STBG	FEMA	TOTAL Federal Funds					
2019 Funds Programmed	\$23,065,806	\$2,299,900	\$1,510,400	\$287,100	\$180,000	\$963,132	\$506,655	\$17,372,400	\$28,091,080	\$740,993	\$75,017,466	\$6,989,487	\$12,151,308	\$123,499	\$4,828,137	\$99,109,897
2020 Funds Programmed	\$8,883,497	\$2,314,600	\$78,400	\$1,536,300	\$45,000	\$0	\$0	\$28,308,692	\$4,724,000	\$0	\$45,890,489	\$5,950,888	\$9,098,623	\$0	\$4,915,044	\$65,855,044
2021 Funds Programmed	\$340,000	\$1,159,200	\$1,432,000	\$2,875,500	\$225,000	\$0	\$0	\$11,423,200	\$3,781,800	\$0	\$21,236,700	\$86,000	\$5,025,300	\$0	\$5,003,515	\$31,351,515
2022 Funds Programmed	\$3,246,479	\$6,747,800	\$0	\$0	\$0	\$0	\$0	\$11,879,200	\$43,200	\$0	\$21,916,679	\$2,254,521	\$4,989,300	\$0	\$5,093,578	\$34,254,078
Total	\$35,535,782	\$ 12,521,500	\$ 3,020,800	\$ 4,698,900	\$ 450,000	\$ 963,132	\$506,655	\$68,983,492	\$36,640,080	\$740,993	\$ 164,061,334	\$ 15,280,896	\$ 31,264,531	\$123,499	\$ 19,840,274	\$230,570,534

	Prior Year	FY 2019	FY 2020	FY 2021	FY 2022	TOTAL
Available State and Federal Funding	\$740,993	\$65,332,800	\$43,725,000	\$38,504,000	\$44,238,000	\$192,540,793
Available Operations and Maintenance Funding	\$0	\$4,828,137	\$4,915,044	\$5,003,515	\$5,093,578	\$19,840,274
Funds from Other Sources (inc. Local)	\$123,499	\$6,989,487	\$5,950,888	\$86,000	\$2,254,521	\$15,404,395
Available Suballocated Funding	\$23,958,136	\$3,583,143	\$5,877,811	\$5,542,879	\$6,937,464	\$45,899,432
TOTAL AVAILABLE FUNDING	\$24,822,628	\$80,733,567	\$60,468,743	\$49,136,394	\$58,523,563	\$273,684,894
Prior Year Funding	\$24,822,628	\$6,446,298	\$1,059,997	\$18,844,876		--
Programmed State and Federal Funding		(\$99,109,897)	(\$65,855,044)	(\$31,351,515)	(\$34,254,078)	(\$230,570,534)
TOTAL REMAINING	\$24,822,628	\$6,446,298	\$1,059,997	\$18,844,876	\$43,114,360	\$43,114,360

Additional Funds from Other Sources include one-time FEMA and SEMA grant funding for the Riverside Bridge Replacement.

Available State and Federal Funding shown here does not include Funding Available shown on Bike/Ped Financial Constraint Page.

See Table H.9 for details on Local Share Financial Capacity.

STATE AND FEDERAL

Table H.1 Summary	2019	2020	2021	2022
MoDOT State/Federal Funding	\$66,952,800	\$45,381,000	\$41,931,000	\$44,584,000

Table H.2	STBG-Urban	TAP	BRM	5307	5310	5339
Carryover Balance through FY2018	\$21,357,920.31	\$624,281.24	\$963,132	\$0	\$477,901	\$755,919
Anticipated Allocation FY2019	\$6,537,326.95	\$438,053.09	\$0	\$2,653,592	\$278,279	\$383,326
Anticipated Allocation FY2020	\$6,668,073.49	\$446,814.15	\$0	\$2,706,664	\$283,845	\$389,993
Anticipated Allocation FY2021	\$6,801,434.96	\$455,750.43	\$0	\$2,760,797	\$289,521	\$396,792
Anticipated Allocation FY2022	\$6,937,463.66	\$464,865.44	\$0	\$2,852,013	\$295,312	\$403,728
Total Anticipated Allocation	\$26,944,299.06	\$1,805,483.10	\$0.00	\$10,973,066	\$1,146,957	\$1,573,839
Programmed through FY2022	(\$35,535,782.00)	(\$1,408,662.00)	(\$963,132)	(10,973,066)	(\$1,373,701)	(\$1,776,919)
Estimated Carryover Balance Through FY 2022	\$12,766,437.37	\$1,021,101.24	\$0	\$0	\$251,157	\$552,839

LOCAL

Table H.3 Motor Fuel Taxes, Vehicle Sales and Use Taxes, and Vehicle Fee Projections					
	2019	2020	2021	2022	TOTAL
Christian	\$1,520,693	\$1,520,693	\$1,520,693	\$1,520,693	\$6,082,772
Greene	\$3,724,547	\$3,724,547	\$3,724,547	\$3,724,547	\$14,898,188
Battlefield	\$223,433	\$223,433	\$223,433	\$223,433	\$893,732
Nixa	\$760,312	\$760,312	\$760,312	\$760,312	\$3,041,248
Ozark	\$712,268	\$712,268	\$712,268	\$712,268	\$2,849,072
Republic	\$589,600	\$589,600	\$589,600	\$589,600	\$2,358,400
Springfield	\$6,375,160	\$6,375,160	\$6,375,160	\$6,375,160	\$25,500,640
Strafford	\$94,250	\$94,250	\$94,250	\$94,250	\$377,000
Willard	\$211,362	\$211,362	\$211,362	\$211,362	\$845,448
TOTAL	\$14,211,625	\$14,211,625	\$14,211,625	\$14,211,625	\$55,868,384

Table H.4 Local Tax Revenue Projections					
	2019	2020	2021	2022	TOTAL
Christian County Sales Tax	\$3,910,000	\$3,910,000	\$3,910,000	\$3,910,000	\$15,640,000
Christian County Property Tax	\$120,000	\$120,000	\$120,000	\$120,000	\$480,000
Greene County Sales Tax	\$14,330,000	\$14,330,000	\$14,330,000	\$14,330,000	\$57,320,000
Greene County Property Tax	\$5,910,629	\$5,910,629	\$5,910,629	\$5,910,629	\$23,642,516
City of Battlefield Sales Tax	\$128,600	\$128,600	\$128,600	\$128,600	\$514,400
City of Nixa Sales Tax	\$1,423,000	\$1,423,000	\$1,423,000	\$1,423,000	\$5,692,000
City of Ozark Sales Tax	\$1,147,500	\$1,147,500	\$1,147,500	\$1,147,500	\$4,590,000
City of Republic Sales Tax	\$1,245,993	\$1,245,993	\$1,245,993	\$1,245,993	\$4,983,972
City of Springfield Sales Tax	\$5,625,000	\$5,625,000	\$5,625,000	\$5,625,000	\$22,500,000
City of Springfield CIP Sales Tax	\$11,250,000	\$11,250,000	\$11,250,000	\$11,250,000	\$45,000,000
City of Willard Sales Tax	\$240,000	\$240,000	\$240,000	\$240,000	\$960,000
TOTAL	\$45,330,722	\$45,330,722	\$45,330,722	\$45,330,722	\$181,322,888

Table H.9 Local Share Financial Capacity	2019	2020	2021	2022
City of Battlefield				
Total Available Revenue	\$386,908.00	\$386,908.00	\$386,908.00	\$386,908.00
Carryover Balance from Prior Year	--	\$195,876.59	\$547,344.31	\$905,300.10
Estimated Operations and Maintenance Expenditures	(\$27,937.41)	(\$28,440.28)	(\$28,952.21)	(\$29,473.35)
Estimated TIP Project Expenditures	(\$163,094.00)	(\$7,000.00)	\$0.00	\$0.00
Amount Available for Local Projects	\$195,876.59	\$547,344.31	\$905,300.10	\$1,262,734.75
City of Nixa				
Total Available Revenue	\$2,183,312.00	\$2,183,312.00	\$2,183,312.00	\$2,183,312.00
Carryover Balance from Prior Year	--	\$839,781.33	\$2,475,734.14	\$4,456,969.26
Estimated Operations and Maintenance Expenditures	(\$164,084.67)	(\$167,038.19)	(\$170,044.88)	(\$173,105.68)
Estimated TIP Project Expenditures	(\$1,179,446.00)	(\$380,321.00)	(\$32,032.00)	\$0.00
Amount Available for Local Projects	\$839,781.33	\$2,475,734.14	\$4,456,969.26	\$6,467,175.58
City of Ozark				
Total Available Revenue	\$1,859,768.00	\$1,859,768.00	\$1,859,768.00	\$1,859,768.00
Carryover Balance from Prior Year	--	\$1,009,525.85	\$2,548,859.86	\$4,386,989.26
Estimated Operations and Maintenance Expenditures	(\$20,880.15)	(\$21,255.99)	(\$21,638.60)	(\$22,028.09)
Estimated TIP Project Expenditures	(\$829,362.00)	(\$299,178.00)	\$0.00	\$0.00
Amount Available for Local Projects	\$1,009,525.85	\$2,548,859.86	\$4,386,989.26	\$6,224,729.17
City of Republic				
Total Available Revenue	\$1,945,093.00	\$1,945,093.00	\$1,945,093.00	\$1,945,093.00
Carryover Balance from Prior Year	--	\$1,573,210.07	\$3,392,393.85	\$5,209,311.26
Estimated Operations and Maintenance Expenditures	(\$123,682.93)	(\$125,909.22)	(\$128,175.59)	(\$130,482.75)
Estimated TIP Project Expenditures	(\$248,200.00)	\$0.00	\$0.00	\$0.00
Amount Available for Local Projects	\$1,573,210.07	\$3,392,393.85	\$5,209,311.26	\$7,023,921.51
City of Springfield				
Total Available Revenue	\$25,143,245.00	\$25,143,245.00	\$25,143,245.00	\$25,143,245.00
Carryover Balance from Prior Year	--	\$20,262,658.99	\$42,361,019.78	\$64,947,065.87
Estimated Operations and Maintenance Expenditures	(\$2,467,567.01)	(\$2,511,983.21)	(\$2,557,198.91)	(\$2,603,228.49)
Estimated TIP Project Expenditures	(\$2,413,019.00)	(\$532,901.00)	\$0.00	\$0.00
Amount Available for Local Projects	\$20,262,658.99	\$42,361,019.78	\$64,947,065.87	\$87,487,082.38

Table H.9 Local Share Financial Capacity cont.	2019	2020	2021	2022
City of Strafford				
Total Available Revenue	\$112,650.00	\$112,650.00	\$112,650.00	\$112,650.00
Carryover Balance from Prior Year	--	\$52,653.76	\$162,290.23	\$271,872.46
Estimated Operations and Maintenance Expenditures	(\$2,960.24)	(\$3,013.53)	(\$3,067.77)	(\$3,122.99)
Estimated TIP Project Expenditures	(\$57,036.00)	\$0.00	\$0.00	\$0.00
Amount Available for Local Projects	\$52,653.76	\$162,290.23	\$271,872.46	\$381,399.47
City of Willard				
Total Available Revenue	\$481,652.00	\$481,652.00	\$481,652.00	\$481,652.00
Carryover Balance from Prior Year	--	\$97,662.68	\$536,151.15	\$973,862.68
Estimated Operations and Maintenance Expenditures	(\$42,400.32)	(\$43,163.53)	(\$43,940.47)	(\$44,731.40)
Estimated TIP Project Expenditures	(\$341,589.00)	\$0.00	\$0.00	\$0.00
Amount Available for Local Projects	\$97,662.68	\$536,151.15	\$973,862.68	\$1,410,783.28
Christian County				
Total Available Revenue	\$5,550,693.00	\$5,550,693.00	\$5,550,693.00	\$5,550,693.00
Carryover Balance from Prior Year	--	\$4,847,894.13	\$10,319,388.90	\$15,789,458.10
Estimated Operations and Maintenance Expenditures	(\$77,797.87)	(\$79,198.23)	(\$80,623.80)	(\$82,075.03)
Estimated TIP Project Expenditures	(\$625,001.00)	\$0.00	\$0.00	\$0.00
Amount Available for Local Projects	\$4,847,894.13	\$10,319,388.90	\$15,789,458.10	\$21,258,076.07
Greene County				
Total Available Revenue	\$23,965,176.00	\$23,965,176.00	\$23,965,176.00	\$23,965,176.00
Carryover Balance from Prior Year	--	\$20,044,257.66	\$38,382,166.74	\$61,774,373.41
Estimated Operations and Maintenance Expenditures	(\$551,921.34)	(\$561,855.92)	(\$571,969.33)	(\$582,264.78)
Estimated TIP Project Expenditures	(\$3,368,997.00)	(\$5,065,411.00)	(\$1,000.00)	(\$2,254,521.00)
Amount Available for Local Projects	\$20,044,257.66	\$38,382,166.74	\$61,774,373.41	\$82,902,763.63
City Utilities				
Total Available Revenue	\$9,179,500.00	\$8,129,500.00	\$8,818,500.00	\$9,663,500.00
Estimated Operations and Maintenance Expenditures	(\$5,793,800.00)	(\$5,897,676.00)	(\$6,001,630.00)	(\$6,105,662.00)
Available for TIP Project Expenditures	\$3,385,700.00	\$2,231,824.00	\$2,816,870.00	\$3,557,838.00
Carryover from Prior Year	--	\$3,290,627.00	5,181,363.00	\$7,448,538.00
Estimated TIP Project Expenditures	(\$95,073.00)	(\$341,088.00)	(\$549,695.00)	(\$117,267.00)
Amount Available for Local Projects	\$3,290,627.00	\$5,181,363.00	\$7,448,538.00	\$10,889,109.00

PERFORMANCE MEASURES

NATIONAL GOALS AND PERFORMANCE MEASURES

The Moving Ahead for Progress in the 21st Century Act, or MAP-21, integrated performance measures into the planning and programming aspects of transportation investment. MAP-21 established seven National Goals as the focus of the Federal-aid highway program. The FAST (Fixing America's Surface Transportation) Act provided for continuation of these goals. Guidance has been released listing the required performance measures to achieve the national goals. The state DOTs, MPOs, and transit agencies are required to coordinate target setting for these measures. MPOs must set their targets within 180 days of the state. MPOs may choose to set their own targets or to program in support of the state and transit agency targets. OTO will make this decision on a case-by-case basis.

1. Safety

To achieve a significant reduction in traffic fatalities and serious injuries on all public roads.

Measures:

- Number of Fatalities
- Rate of Fatalities per 100 million VMT
- Number of Serious Injuries
- Rate of Serious Injuries per 100 million VMT
- Number of Non-Motorized Fatalities and Non-Motorized Serious Injuries

2. Infrastructure Condition

To maintain the highway infrastructure asset system in a state of good repair.

Measures:

- Percentage of NHS Bridges Classified as in Good Condition
- Percentage of NHS Bridges Classified as in Poor Condition
- Percentage of Pavements of the Interstate in Good Condition
- Percentage of Pavements of the Interstate in Poor Condition
- Percentage of Pavements of the non-Interstate NHS in Good Condition
- Percentage of Pavements of the non-Interstate NHS in Poor Condition

3. Transit Asset Management:

To maintain transit assets in a state of good repair.

Measures:

- Equipment (non-revenue service vehicles) State of Good Repair
- Facilities State of Good Repair
- Infrastructure State of Good Repair
- Rolling Stock State of Good Repair

4. Congestion Reduction

To achieve a significant reduction in congestion on the National Highway System.

Measures:

- Peak Hour Excessive Delay (PHED) Measure – Annual Hours of PHED per Capita (not applicable to OTO)
- Non-Single Occupancy Vehicle Travel (SOV) Measure – Percent of non-SOV Travel (not applicable to OTO)

5. System Reliability

To improve the efficiency of the surface transportation system.

Measures:

- Interstate Travel Time Reliability Measure – Percent of Person-Miles Traveled on the Interstate that are Reliable
- Non-Interstate NHS Travel Time Reliability Measure – Percent of Person-Miles Traveled on the non-Interstate NHS that are Reliable

6. Freight Movement and Economic Vitality

To improve the national freight network, strengthen the ability of rural communities to access national and international trade markets, and support regional economic development.

Measures:

- Freight Reliability Measure – Truck Travel Time Reliability (TTTR) Index

7. Environmental Sustainability

To enhance the performance of the transportation system while protecting and enhancing the natural environment.

Measures:

- Emissions Measure – Total Emissions Reduction (not applicable to OTO)

8. Reduced Project Delivery Delays

To reduce project costs, promote jobs and the economy, and expedite the movement of people and goods by accelerating project completion through eliminating delays in the project development and delivery process, including reducing regulatory burdens and improving agencies' work practices.

TRANSIT STATE OF GOOD REPAIR TARGETS

Transit is the first area where targets were set. Targets must be established within 180 days of the date targets are set by the State and transit agency.

City Utilities is partnering with the State of Missouri on the state-sponsored Transit Asset Management Plan, which MoDOT adopted October 2018. MoDOT collected and evaluated transit data and used this information to set targets, which will be evaluated on an annual basis as inventory changes. These targets have been set by the State. City Utilities agrees to manage their assets in support of the state targets. At its regularly scheduled meeting on December 20, 2018, the OTO Board of Directors accepted the Transit Asset Management Targets as set forth by MoDOT and City Utilities, agreeing to plan and program in support of these targets.

MoDOT FY 2019 Targets		
Equipment: Non-revenue support-service and maintenance vehicles (exceeding \$50k at purchase)		N/A
Rolling Stock		
Automobiles, Minivans, Vans	8 Years Useful Life	45%
Cutaways	10 Years Useful Life	45%
Buses	14 Years Useful Life	45%
Facilities		
Administrative, Passenger Stations (buildings), and Parking Facilities	30% with a condition rating below 3.0 on FTA’s TERM Scale	
Maintenance Facilities	25% with a condition rating below 3.0 on FTA’s TERM Scale	
Infrastructure		
Only rail fixed-guideway, track, signals and systems		N/A

*TERM is a Federal Transit Administration Transit Economic Requirements Model which helps transit agencies assess their state of good repair backlog, level of annual investment to attain state of good repair, impact of variations in funding, and investment priorities.

SAFETY TARGETS

Safety is the second area where targets were set. OTO can choose to set MPO targets or can choose to plan and program in support of the MoDOT targets. After review of the information, at its meeting on December 20, 2018, the OTO Board of Directors unanimously voted to support the statewide safety targets for CY 2019, which are based on a rolling five-year average:

Performance Measure	Statewide Target for CY2019
Number of Fatalities	872.3
Fatality Rate per 100 Million VMT	1.160
Number of Serious Injuries	4,433.8
Serious Injury Rate per 100 Million VMT	6.168
Number of Non-Motorized Fatalities and Serious Injuries	445.4

Besides the programming efforts described at the end of this Section, the OTO works with many safety programs in the region, including the MoDOT Southwest District Blueprint for Safety and the hosting of the Traffic Incident Management Committee. Through the Blueprint, OTO has been able to secure cones and safety vests for emergency responders in the region. Bicycle and pedestrian safety is monitored by the OTO Bicycle and Pedestrian Advisory Committee through review of crash data and discussion among local jurisdictions on ways to improve safety.

PAVEMENT AND BRIDGE TARGETS

Pavement and Bridge Targets are a combination of two- and four-year targets. At its meeting on October 18, 2018, the OTO Board accepted the MoDOT Pavement and Bridge Targets, agreeing to plan and program in support of these targets.

Performance Measure	2019 Statewide Target	2021 Statewide Target
Percentage of NHS Bridges Classified as in Good Condition	30.9	30.9
Percentage of NHS Bridges Classified as in Poor Condition	7.1	7.1
Percentage of Pavements of the Interstate System in Good Condition	N/A	77.5
Percentage of Pavements of the non-Interstate NHS in Good Condition	61.1	61.1
Percentage of Pavements of the Interstate System in Poor Condition	N/A	0.0
Percentage of Pavements of the non-Interstate NHS in Poor Condition	1.0	1.0

SYSTEM PERFORMANCE TARGETS

System Performance is also a combination of two- and four-year targets. At its meeting on October 18, 2018, the OTO Board accepted the MoDOT System Performance Targets, agreeing to plan and program in support of these targets.

Performance Measure	2019 Statewide Target	2021 Statewide Target
Interstate Travel Time Reliability Measure: Percent of Person-Miles Traveled on the Interstate that are Reliable (NPMRDS)	88.9	87.1
Non-Interstate Travel Time Reliability Measure: Percent of Person-Miles Traveled on the Non-Interstate NHS that are Reliable (NPMRDS)	N/A	87.8
Freight Reliability Measure: Truck Travel Time Reliability (TTTR) Index (NPMRDS)	1.28	1.30

OTO GOALS AND PERFORMANCE MEASURES

MAP-21 and the FAST Act further requires a discussion of performance target achievement in the Transportation Improvement Program. OTO has not yet set all of the performance targets based on the National Goals, since the targets are not yet due. OTO did, however, adopt regional, non-federally required goals and performance measures in its long range transportation plan, *Journey 2035*, adopted in December 2011. These same regional performance measures were carried into *Transportation Plan 2040*. As targets are set for the nationally prescribed performance measures, the Plan and TIP will continue to be amended to address them.

Integration of these regional performance measures into the OTO prioritization process for the statewide transportation improvement program can be found in Section F: Roadways.

TRANSPORTATION PLAN 2040 GOALS

1. Support the economic vitality of the region
2. Encourage productive land use through consistency between planned growth, economic development patterns and transportation improvements
3. Increase the safety and security of the transportation system for all users
4. Increase accessibility and mobility for all transportation modes
5. Improve connections within and between all modes of transportation
6. Encourage efficient system management and operations
7. Preserve the existing transportation system and monitor system performance
8. Maximize resources by promoting partnerships, collaboration, and good planning principles
9. Actively seek secure and reliable transportation funding
10. Provide education and advocacy for transportation
11. Protect and enhance the environment when planning for transportation improvements
12. Support the efficient movement of goods

TRANSPORTATION PLAN 2040 PERFORMANCE MEASURES

Performance Measure	Target	FY 2018-2021 TIP Projects
Vehicle Miles Traveled per Capita	That VMT per Capita will grow no more than 5 percent from its peak in 2004, at a value of 19, by 2035. Growth should be captured in other modes	ADA, pedestrian, and bicycle accommodations; Capacity and efficiency improvements; Transit technology; Transit operations; Transit service coordination
Modal Balance	Decrease "Drove Alone" to 75 percent for the region by 2035	ADA, pedestrian, and bicycle accommodations; Capacity and efficiency improvements; Transit technology; Transit operations; Transit service coordination
Bicycle/Pedestrian Network Completion	If, on average, 4 miles of sidewalk are added each year within the OTO area, but no new roadways, by 2035, the total percent of roadways with sidewalks would be 33.5	ADA, pedestrian, and bicycle accommodations; Capacity and efficiency improvements; Transit stop connections

Performance Measure	Target	FY 2018-2021 TIP Projects
Total Disabling Injury and Fatal Crashes per Million Vehicle Miles Traveled	That disabling injury and fatal crashes/MVMT will continue a downward trend as shown in the above graphic	Safety – infrastructure, work zone, transit; Pavement and railroad crossing improvements; Capacity and efficiency improvements; Transit technology; Transit operations; Transit service coordination
On-Time Performance of Transit System	The CU service standard is 90 percent. The system will be considered to have acceptable on-time performance at this 90 percent level	Safety – infrastructure, work zone, transit; Pavement and railroad crossing improvements; Capacity and efficiency improvements; Transit technology; Transit operations; Transit service coordination
Percent of Housing Units within ¼-mile of a Bus Route	That the percent of housing units within the CU Transit service area and the OTO area within ¼-mile of a bus route is on the upward trend between now and 2035	Transit operations; Transit service coordination
Average Commute Time	Keep the average commute time less than 25 minutes by 2035	ADA, pedestrian, and bicycle accommodations; Safety – infrastructure, work zone, transit; Pavement and railroad crossing improvements; Capacity and efficiency improvements; Transit technology; Transit operations; Transit service coordination
Peak Travel Time	That less than 20 percent of the OTO area roadways will be severely delayed	ADA, pedestrian, and bicycle accommodations; Safety – infrastructure, work zone, transit; Pavement and railroad crossing improvements; Capacity and efficiency improvements; Transit technology; Transit operations; Transit service coordination
Percent of Roadways in Good Condition	That 85 percent or more of the Major Roads in the OTO region are in Good condition	Pavement and railroad crossing improvements; Capacity and efficiency improvements

Performance Measure	Target	FY 2018-2021 TIP Projects
Bridge Condition	That the percent of bridges in fair or better condition will stay above 90 percent	Pavement and railroad crossing improvements; Capacity and efficiency improvements
Ozone Levels	That the region will be able to demonstrate transportation conformity for its plans, programs, and projects	ADA, pedestrian, and bicycle accommodations; Safety – infrastructure, work zone, transit; Pavement and railroad crossing improvements; Capacity and efficiency improvements; Transit technology; Transit operations; Transit service coordination

PROGRAMMING FOR PERFORMANCE

The projects included in the FY 2019-FY 2022 Transportation Improvement Program address these national and regional measures, targets, and goals in a variety of ways. Programmed projects include ADA, pedestrian, and bicycle accommodations. This adds to the reduction of VMT per capita, increased modal balance, bicycle/pedestrian network completion, improved average commute and peak travel time, and maintaining acceptable air quality. The TIP includes numerous safety projects that address roadway and bicycle/pedestrian infrastructure, work-zone safety, and the safety and security of the transit system. These projects support a reduced crash rate and the improved condition of area roads and bridges. Many pavement improvements and railroad crossing improvements benefit these factors as well. Over \$13 million is programmed for bicycle and pedestrian projects with funding available to award for more projects in the coming years. Almost \$14 million in specific Safety funding has been programmed, though most projects address safety regardless of their funding source. Several roadways and intersections in the region suffer from congestion, per the OTO Congestion Management Process. These bottlenecks are addressed through capacity and efficiency improvements. The TIP continues to support the transit system as well, including technology projects that will improve transit operations. Coordination of service, with support for service outside of the City Utilities Transit region is also addressed. Transit State of Good Repair is provided by preventative maintenance and fixed route bus replacement projects totaling \$14.31 million.