

# MoDOT Statewide Safety Targets

August 2021 (reported in HSP and HSIP)

Targets based on 5-year rolling average from CY 2018-2022:

Performance Measure	Crash Data				5-Year Rolling Average Baseline (2016-2020)	5-year Rolling Average Statewide Target CY2022
	2019 Final	2020 Preliminary	2021 Interim Target	2022 Target		
Number of Fatalities*	880	987	938	877	933.4	920.6
Fatality Rate per 100 Million VMT*	1.112	1.369	1.216	1.126	1.238	1.205
Number of Serious Injuries*	4,489	4,777	4,538	4,299	4,722.4	4,564.1
Serious Injury Rate per 100 Million VMT^	5.670	6.628	5.884	5.520	6.260	5.972
Number of Non-Motorized Fatalities and Serious Injuries^	515	541	514	485	484.0	~484.0

\*Performance Measures were reported in the 2021 Highway Safety Plan.

^Performance Measures were reported in the 2021 Highway Safety Improvement Program Annual Report.

**Methodology:** Targets are based on Zero by 2030 fatality reduction, Zero by 2040 serious injury reduction, 1% VMT increase, and non-motorized reduction based on overall fatality and serious injury reductions. An exception is made for instances where the baseline 5-year rolling average is less than the calculated target using the parameters previously described. When this occurs, the baseline will be used as the target.

~The Number of Non-Motorized Fatalities and Serious Injuries using the methodology above was calculated to be 499.1. This is greater than the 484.0 for the baseline, therefore the baseline was used for the target.



## Missouri DOT/ FHWA/ NHTSA/ Planning Partner Annual Safety Target Setting Coordination January 2021

FAST Act/ MAP-21 was the first transportation reauthorization bill requiring annual target setting collaboration between State DOTs and planning partners on national performance measures. Targets are required to be established annually for five safety performance measures using five-year rolling averages. Targets must be established first by State DOTs, then by each MPO, with the choice of MPOs adopting state targets or establishing their own for each measure:

1. Number of Fatalities;
2. Rate of Fatalities per 100 Million Vehicle Miles traveled (VMT);
3. Number of Serious Injuries;
4. Rate of Serious Injuries per 100 Million VMT; and
5. Number of Non-motorized Fatalities and Non-motorized Serious Injuries

The first three performance measures are reported annually in the Highway Safety Plan (HSP) for NHTSA. All five performance measures are reported annually in the Highway Safety Improvement Program (HSIP) for FHWA.

### SIGNIFICANT PROGRESS:

If FHWA determines the State DOT has not made significant progress on targets, the State DOT must spend the full HSIP allocation from the specified fiscal year and submit an HSIP Implementation Plan to the FHWA Division Office by June 30.

### **Annual Safety Target Setting Collaboration with Partners:**

Sept. – Oct. 2016	MoDOT shared, solicited feedback and gained consensus from the MPOs on the safety target setting coordination process during the monthly partner collaboration webinars.
Feb. 2021	MoDOT Safety staff calculates data for each performance measure statewide and meets with MoDOT Executive Team.
Mar. 8, 2021	MoDOT calculates 2016-2020 data trends for each safety performance measure statewide. MoDOT shares data with MPOs, FHWA, and NHTSA with discussion on data, assumptions and challenges for targets during the monthly partner collaboration webinar.
Mar - Apr. 2021	MoDOT solicits target setting assumption feedback from partners by email.
Apr. 12, 2021	MoDOT and MPOs finalize assumptions to use for CY2022 targets during the monthly partner collaboration webinar.
By July 1, 2021	MoDOT applies assumptions to safety data for three safety performance measures and submits targets to NHTSA through HSP.
By Aug. 31, 2021	MoDOT applies assumptions to safety data for final two safety performance measures and submits targets for five measures to FHWA through HSIP. MoDOT shares targets with planning partners through email and monthly partner collaboration webinars.
By Feb. 27, 2022	MPOs email MoDOT their board documentation indicating whether the MPO determined to support the state target or the MPO targets, if they established their own.

# MODOT SAFETY TARGETS



## BASELINE CY 22

933.4 920.6 • NUMBER OF FATALITIES

1.238 1.025 • RATE OF FATALITIES PER 100 MILLION VEHICLE MILES TRAVELED (VMT)

4,722.4 4,564.1 • NUMBER OF SERIOUS INJURIES

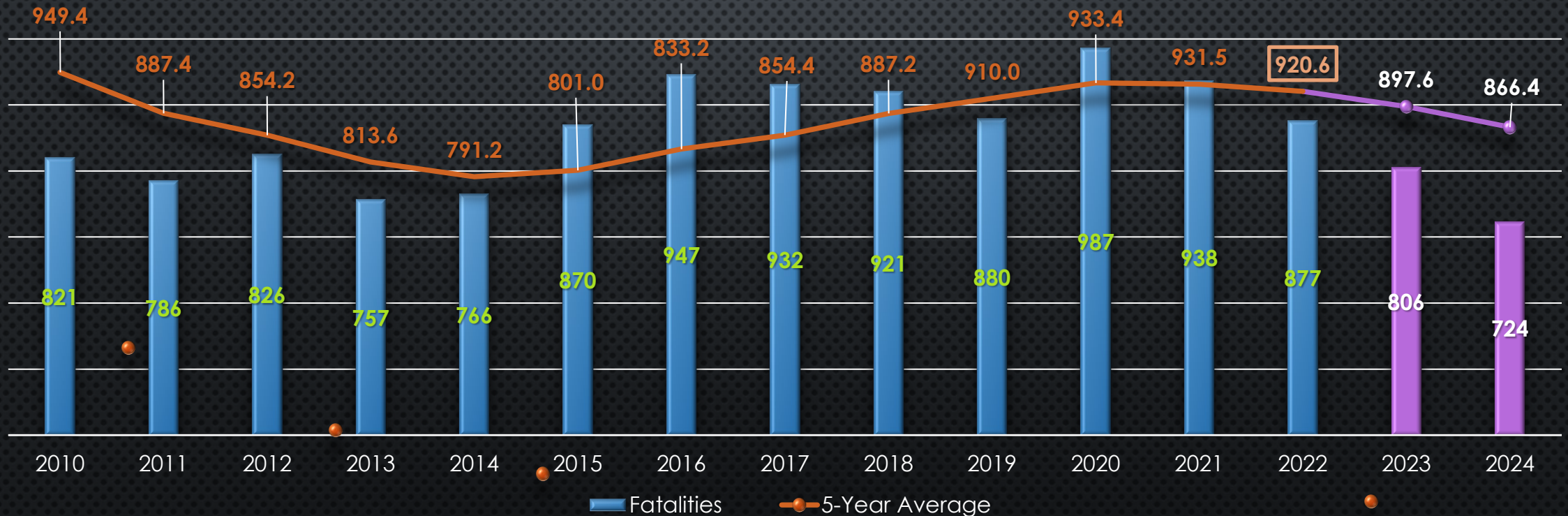
6.260 5.972 • RATE OF SERIOUS INJURIES

484.0 484.0 • NUMBER OF NON-MOTORIZED FATALITIES AND NON-MOTORIZED SERIOUS INJURIES



# MODOT CURRENT NUMBERS

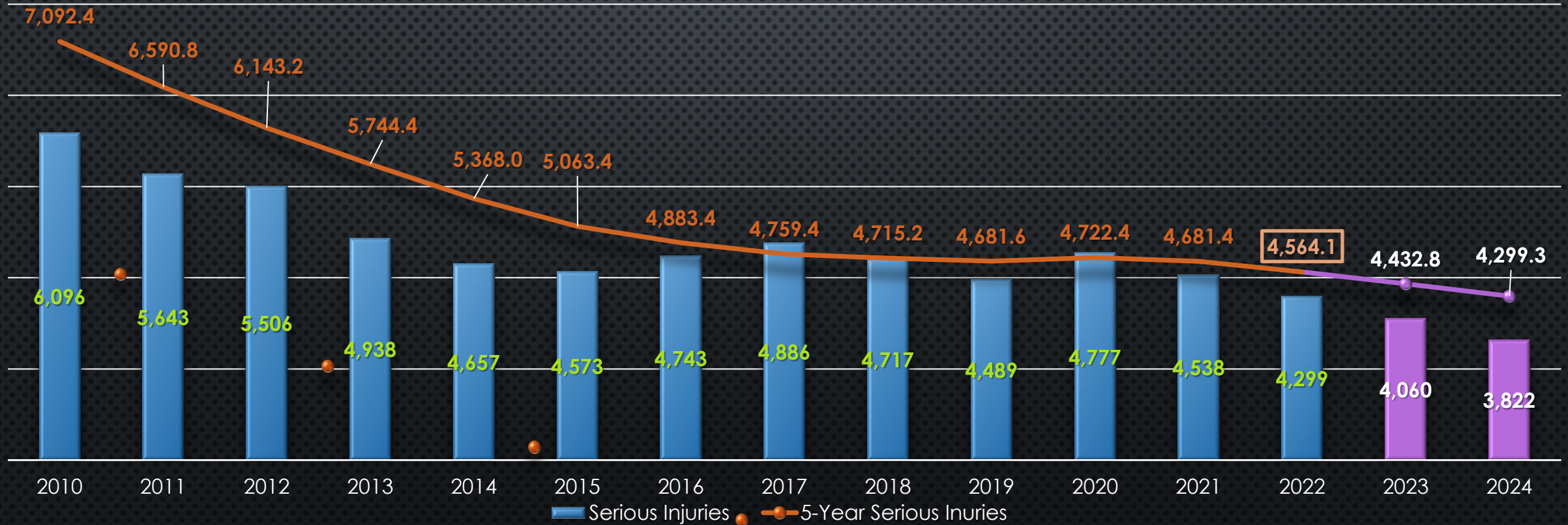
## Annual Fatalities and 5-Year Average Fatalities





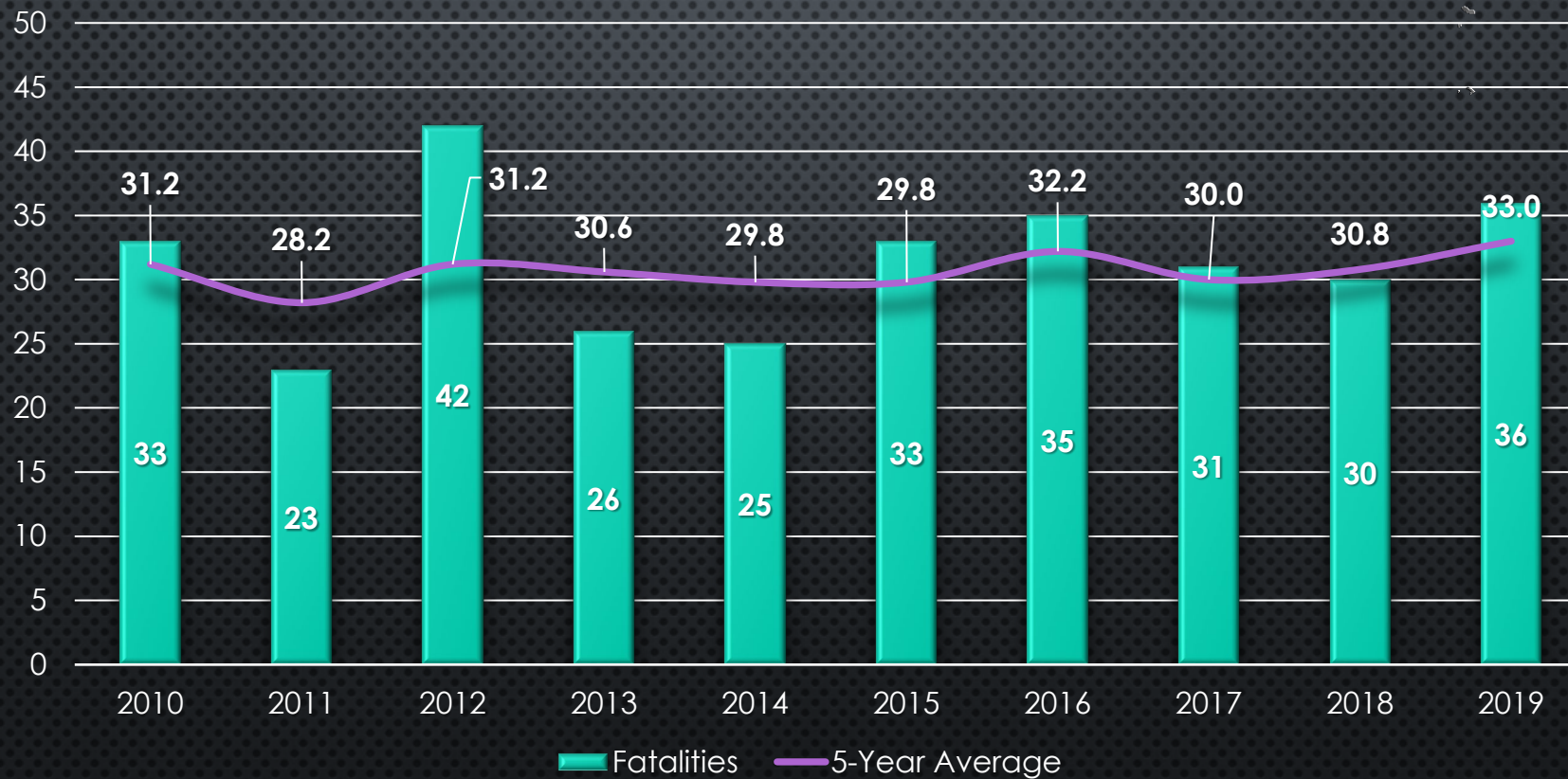
# MODOT CURRENT NUMBERS

Annual Serious Injuries and  
5-Year Avg Serious Injuries



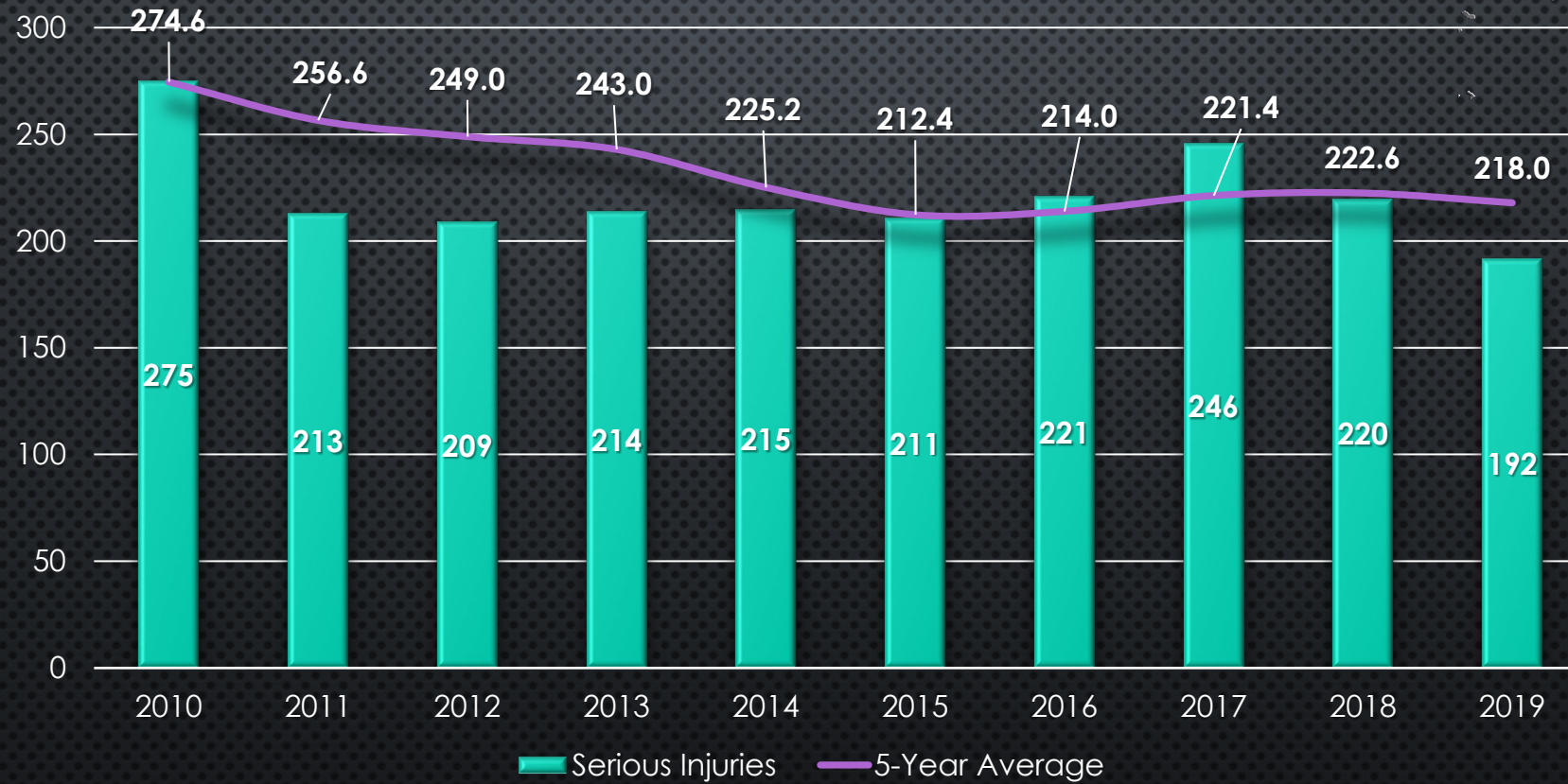


# OTO'S CURRENT NUMBERS





# OTO'S CURRENT NUMBERS

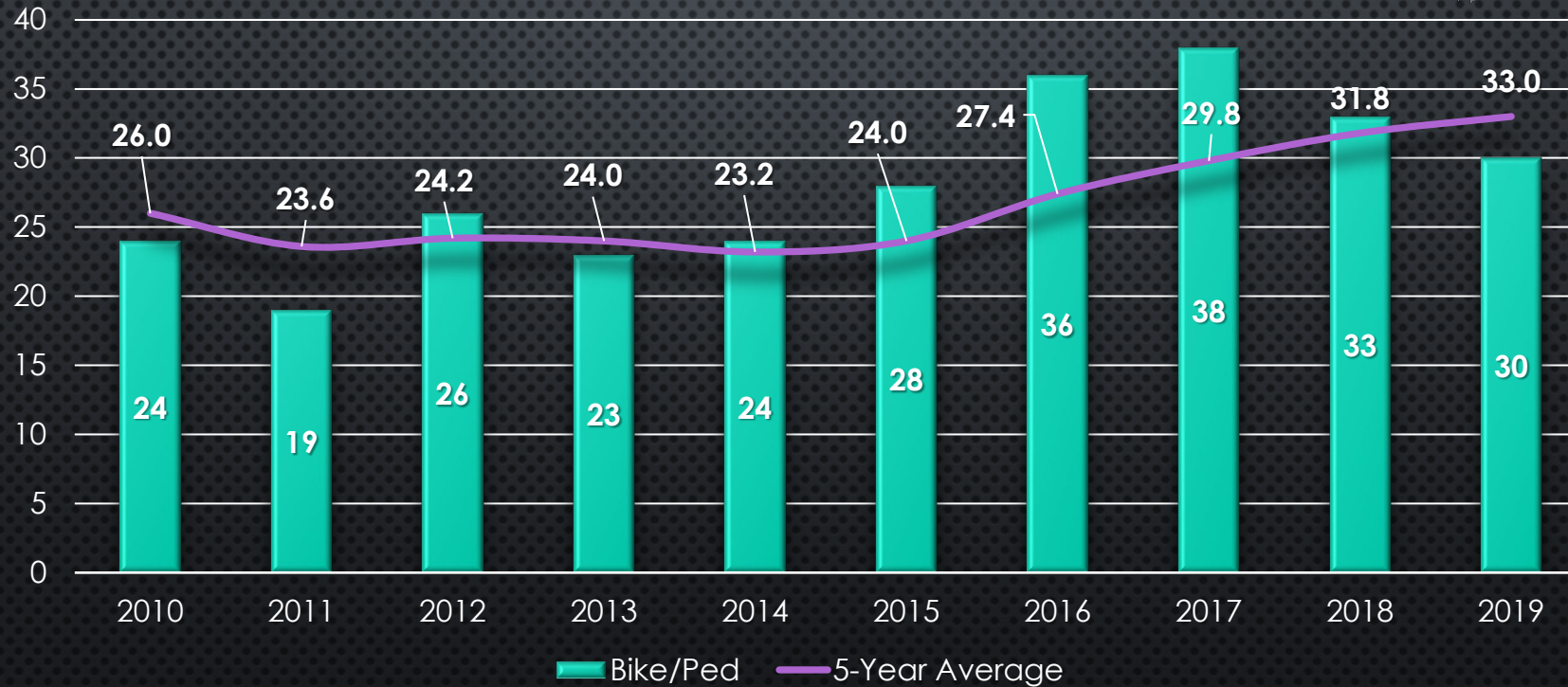




# OTO'S CURRENT NUMBERS



## Bike/Ped Fatalities and Serious Injuries





**FATALITIES, PRIOR 5 YEARS**

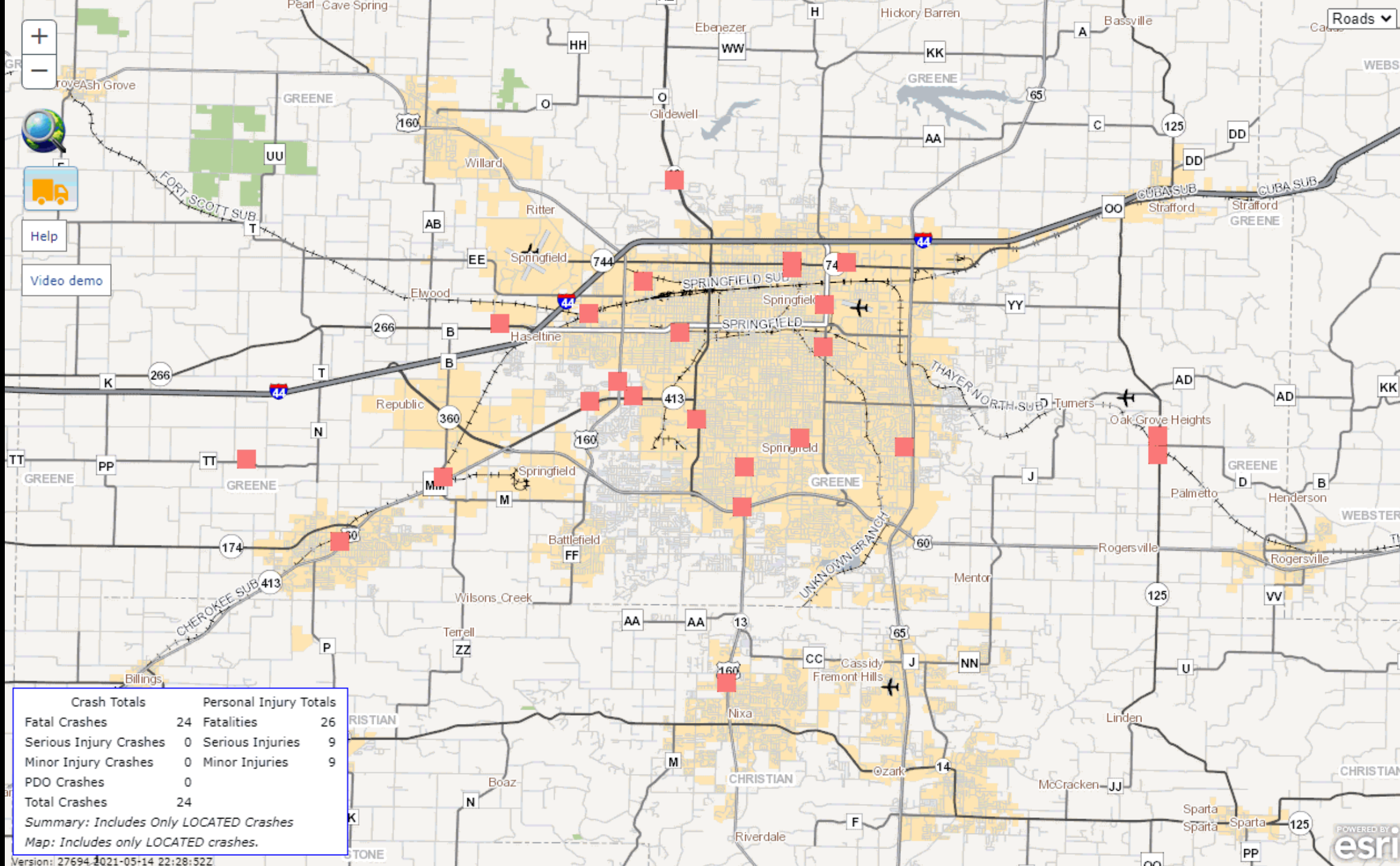






**FATALITIES, YEAR TO DATE**

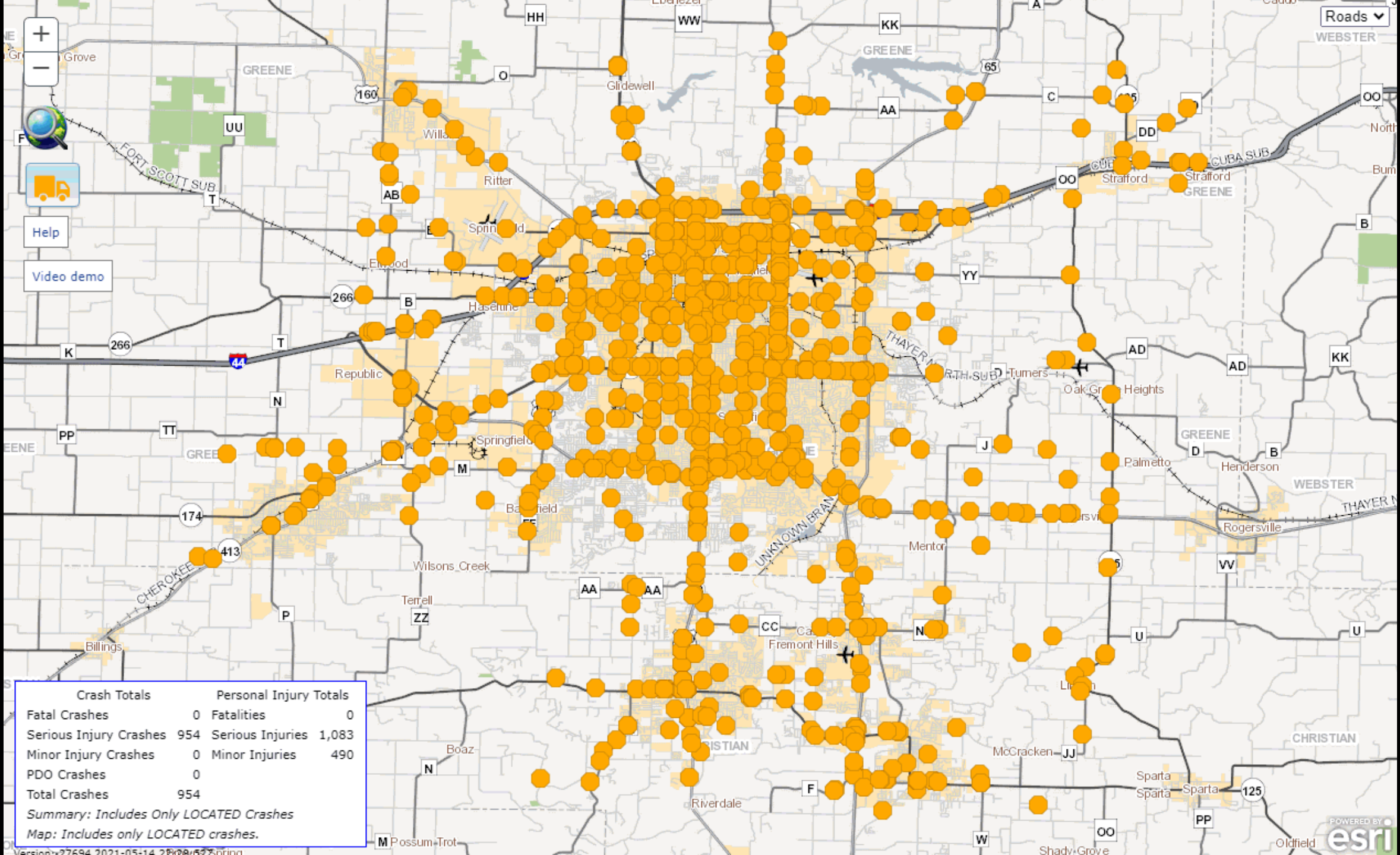






**SERIOUS INJURIES, PRIOR 5 YEARS**

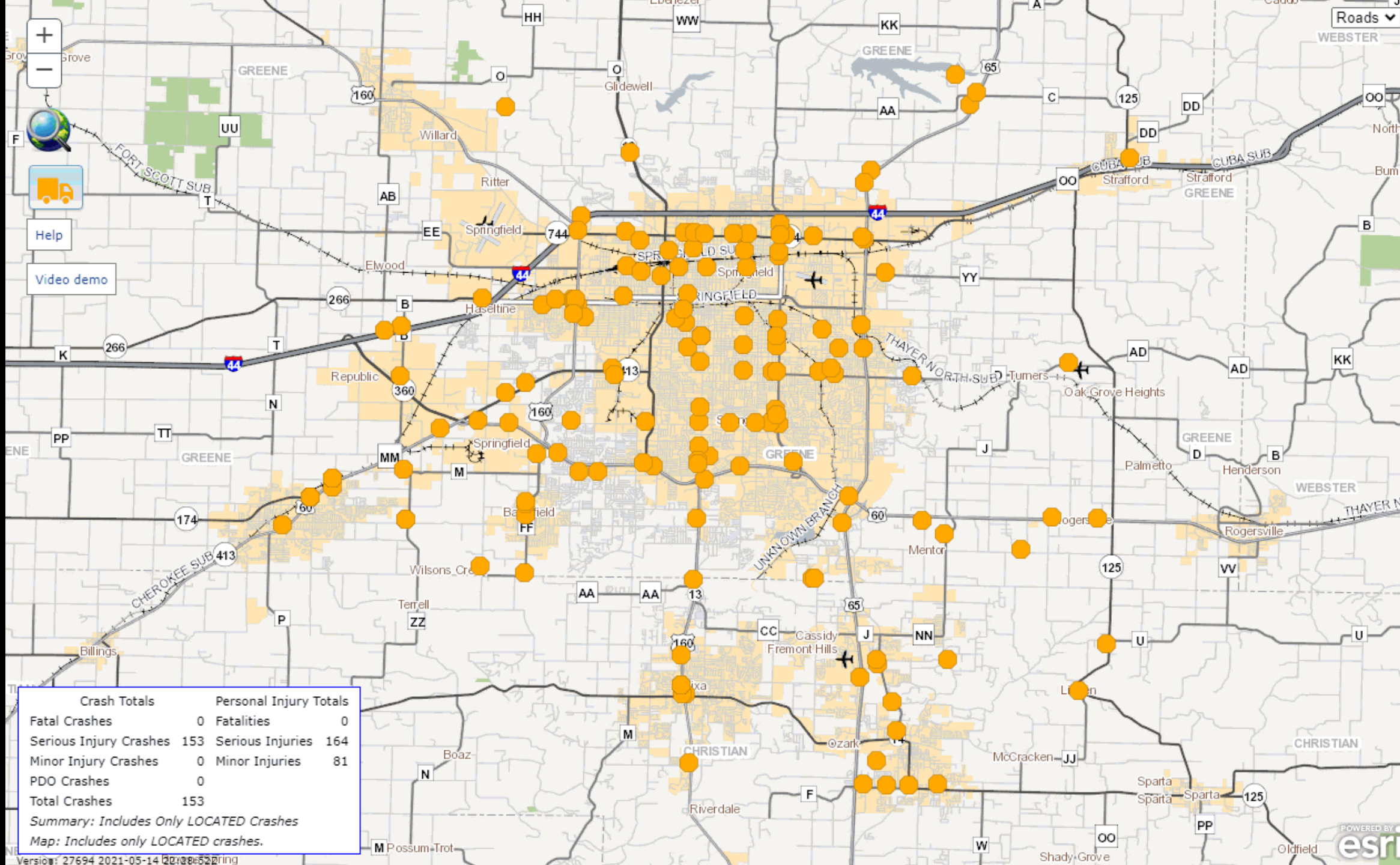






**SERIOUS INJURIES, YEAR TO DATE**

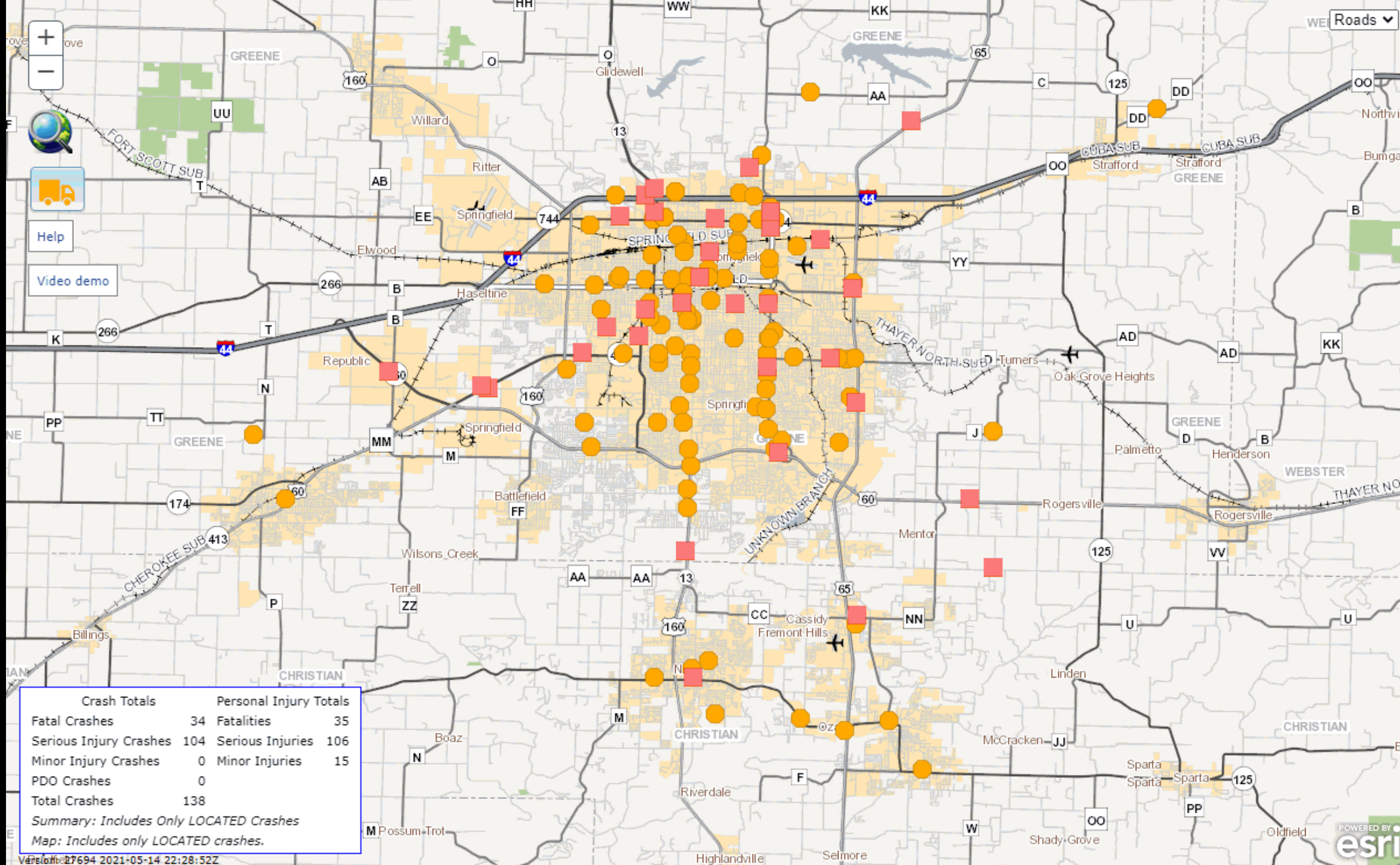






**BIKE/PED, PRIOR 5 YEARS**







**BIKE/PED, YEAR TO DATE**



