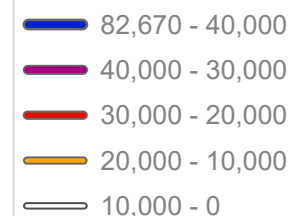


MoDOT Total Roadway AADT 2019 & 2020

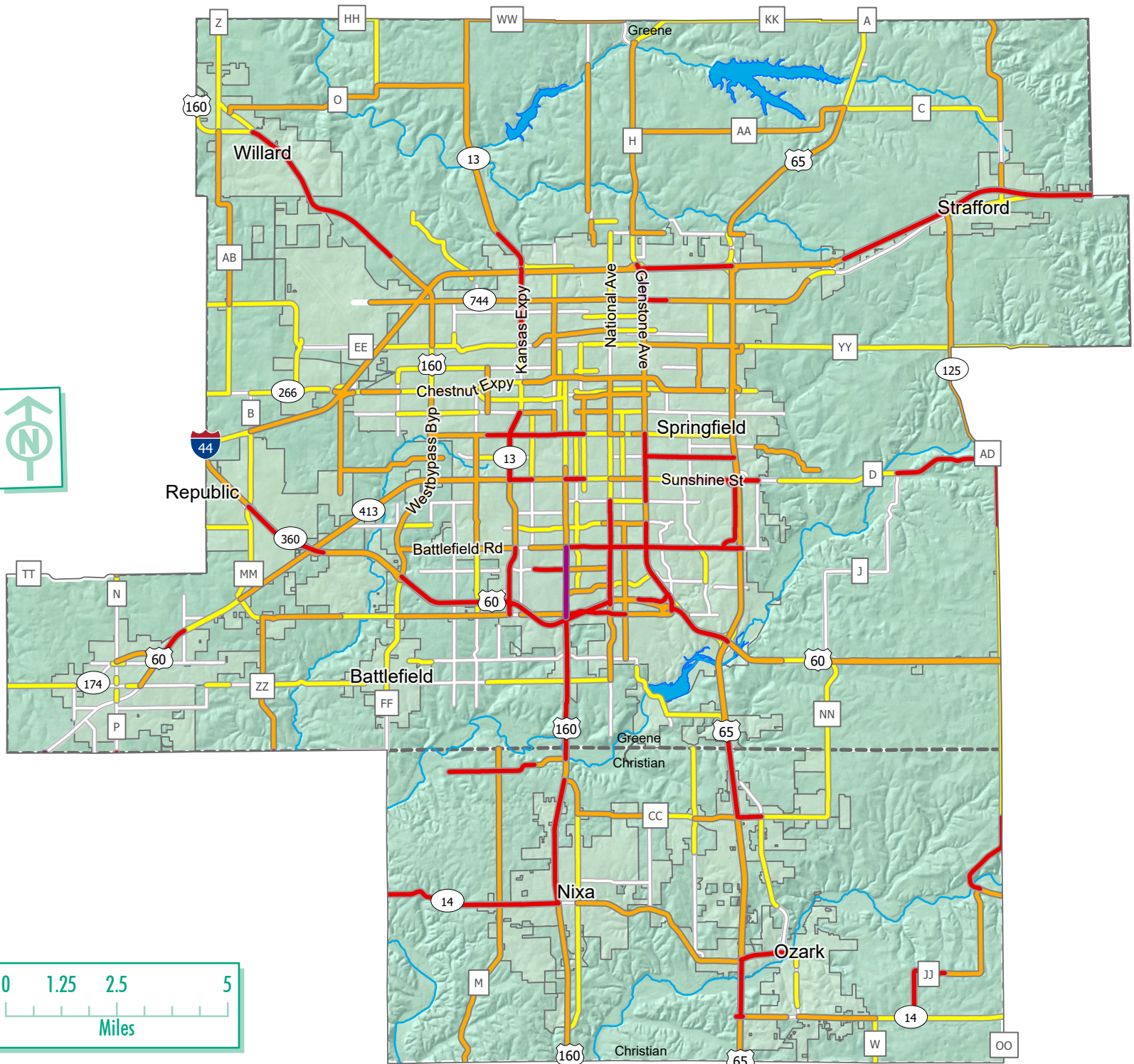
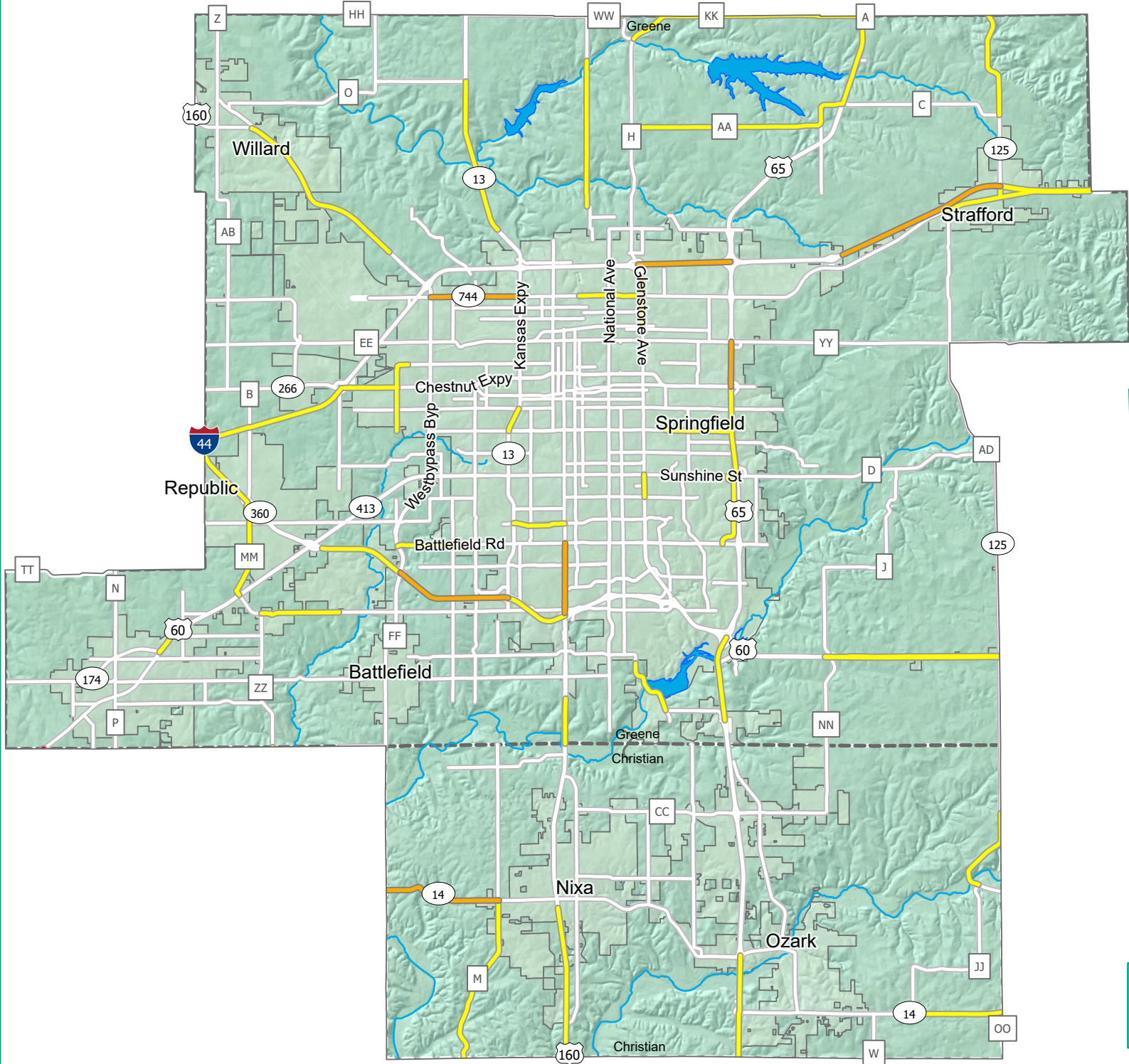
Total Daily Traffic



Source: Missouri Department of Transportation State of the System Segments. The higher value from 2019 or 2020 was used for purposes of priority scoring due to COVID-19 stay-at-home orders.

5-Yr Fatal Crash Average

OTO 5-Yr Safety Score



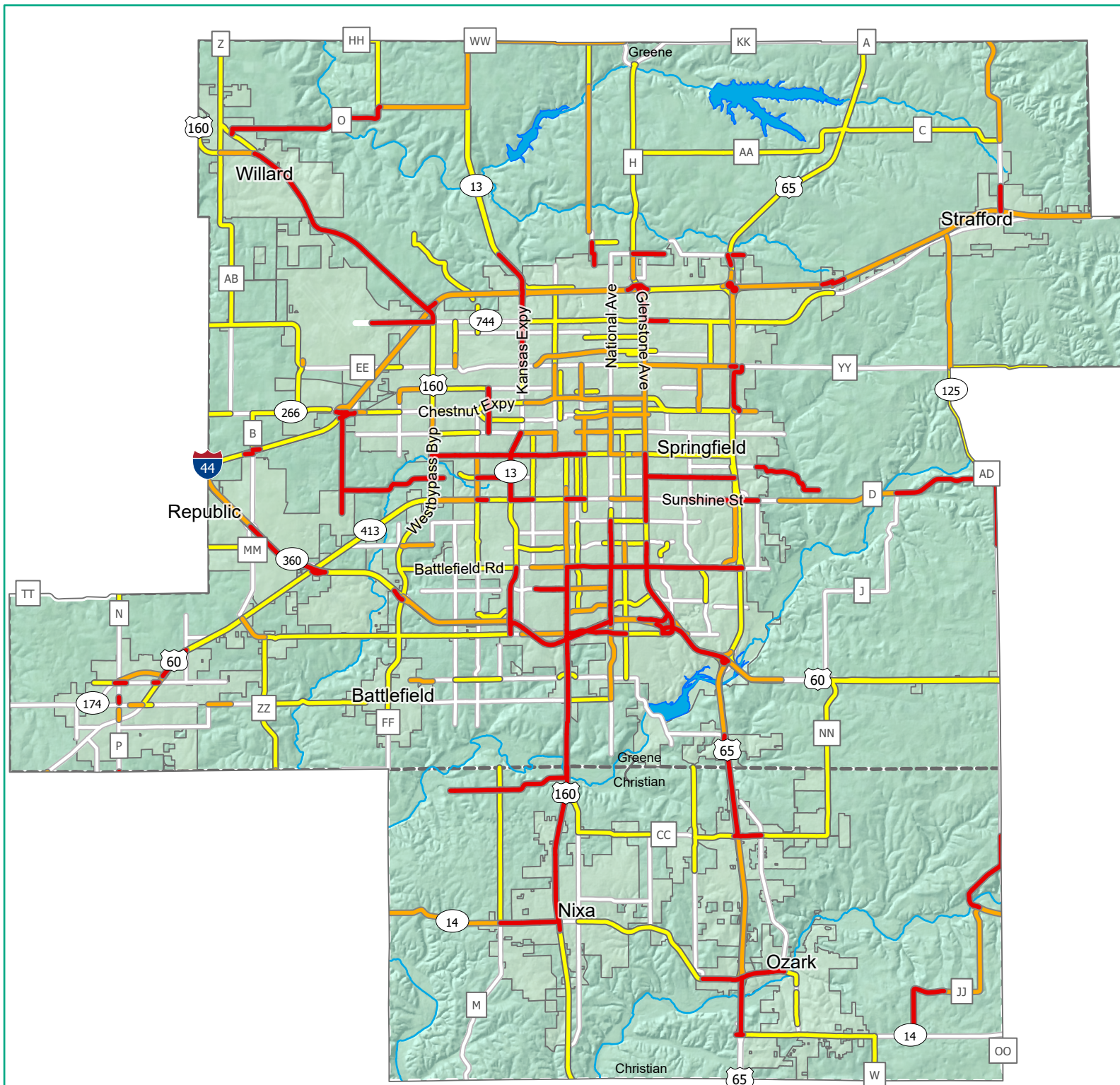
- Avg 5-Yr Fatal Crash Count**
- 0.6 (4 points)
 - 0.4 (3 points)
 - 0.2 (2 points)
 - 0 (1 point)

Source: MoDOT 2020 State of the System Segments
5-year crash rates and averages. Retrieved from the
Central Office April 2021.

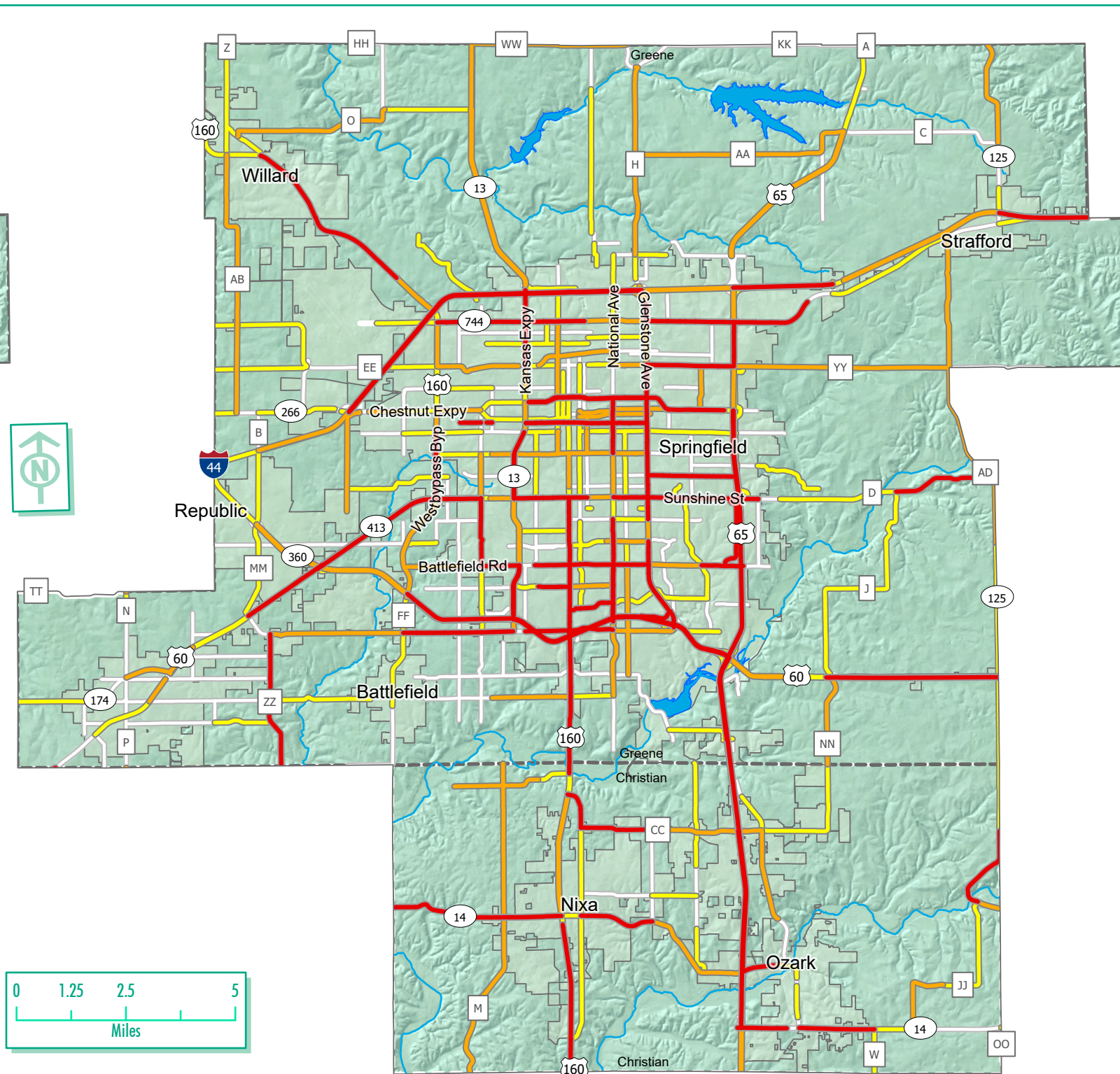


- 5-Yr Safety Score**
- 11 (18 points)
 - 10 - 9 (16 - 14 points)
 - 8 - 7 (12 - 10 points)
 - 6 - 5 (8 - 6 points)
 - 4 - 3 (4 - 2 points)

5-Yr Accident Rate by Roadway Type Average



5-Yr Injury Crash Average



5-Yr Crash Rate by Roadway Type

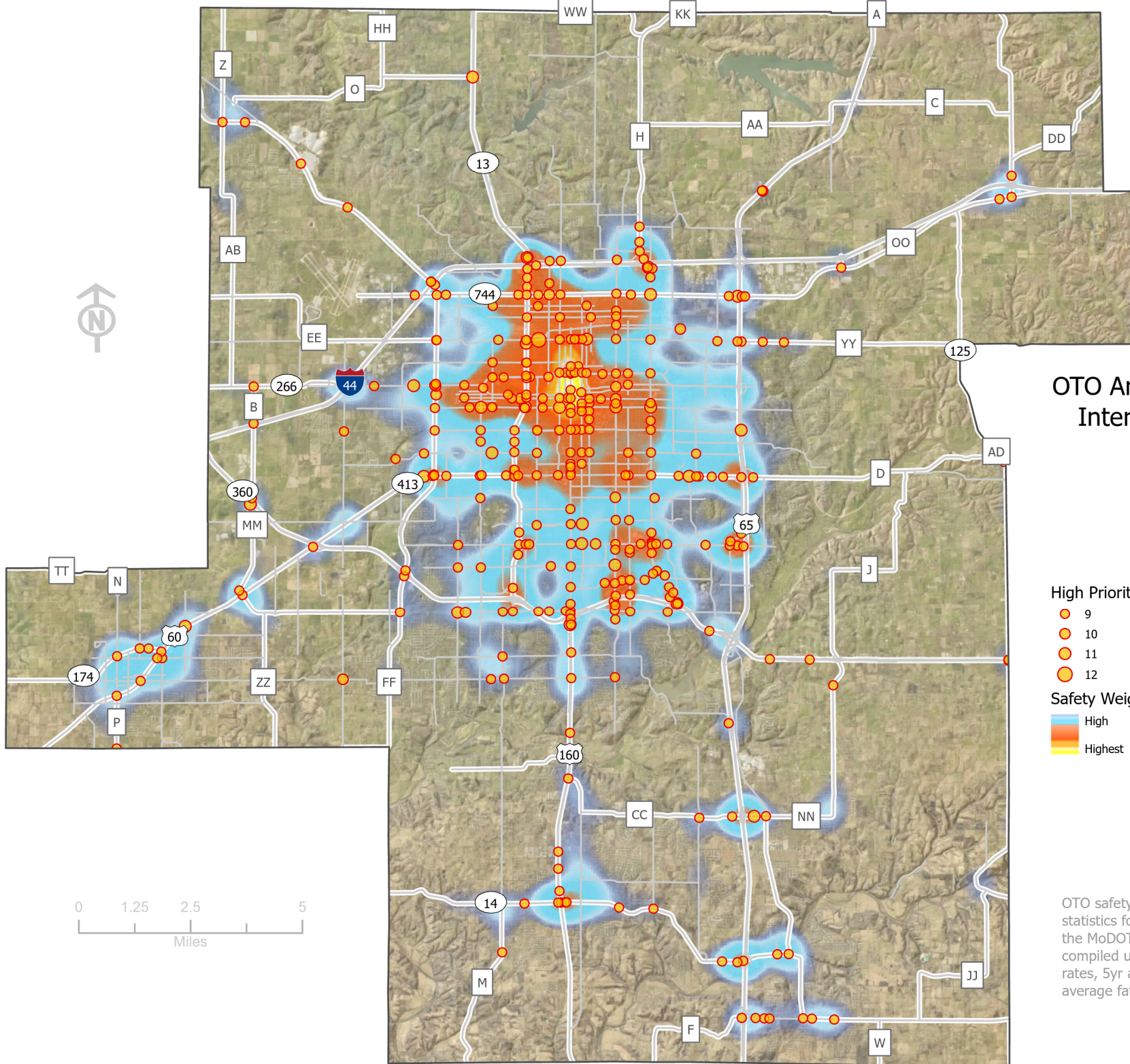
- > 1.5 (4 points)
- 1.5 - 1 (3 points)
- 1 - 0.5 (2 points)
- 0.5 - 0 (1 point)

Source: MoDOT 2020 State of the System Segments
5-year crash rates and averages. Retrieved from the
Central Office April 2021.



Avg 5-Yr Injury Crash Count

- > 2 (4 points)
- 2 - 0.8 (3 points)
- 0.8 - 0.2 (2 points)
- 0.2 - 0 (1 point)



OTO Area Safety Weighted Intersection Heat Map

High Priority Intersections (Safety Scores)

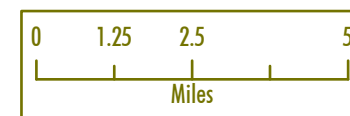
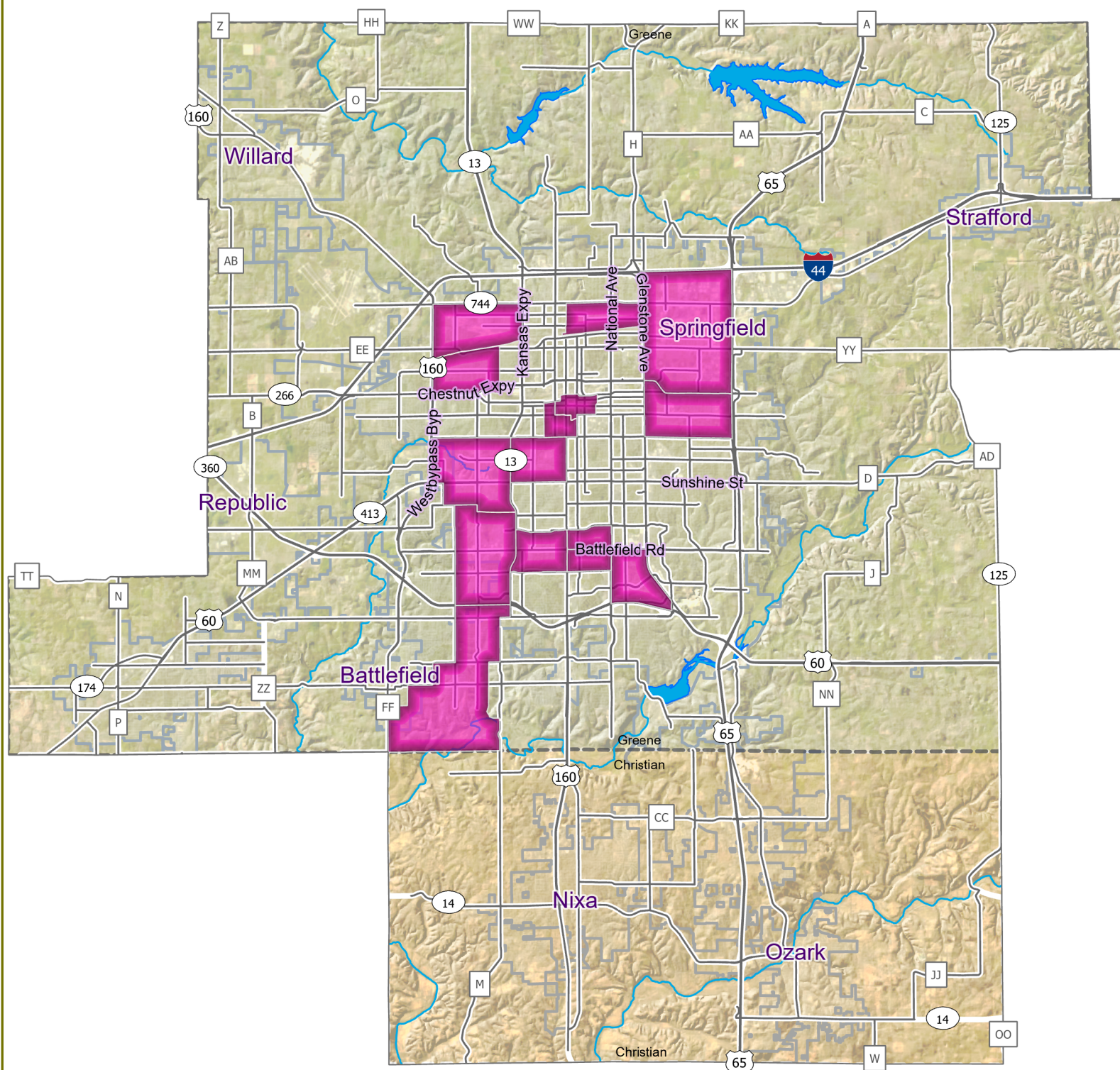
- 9
- 10
- 11
- 12

Safety Weighted Intersection Density

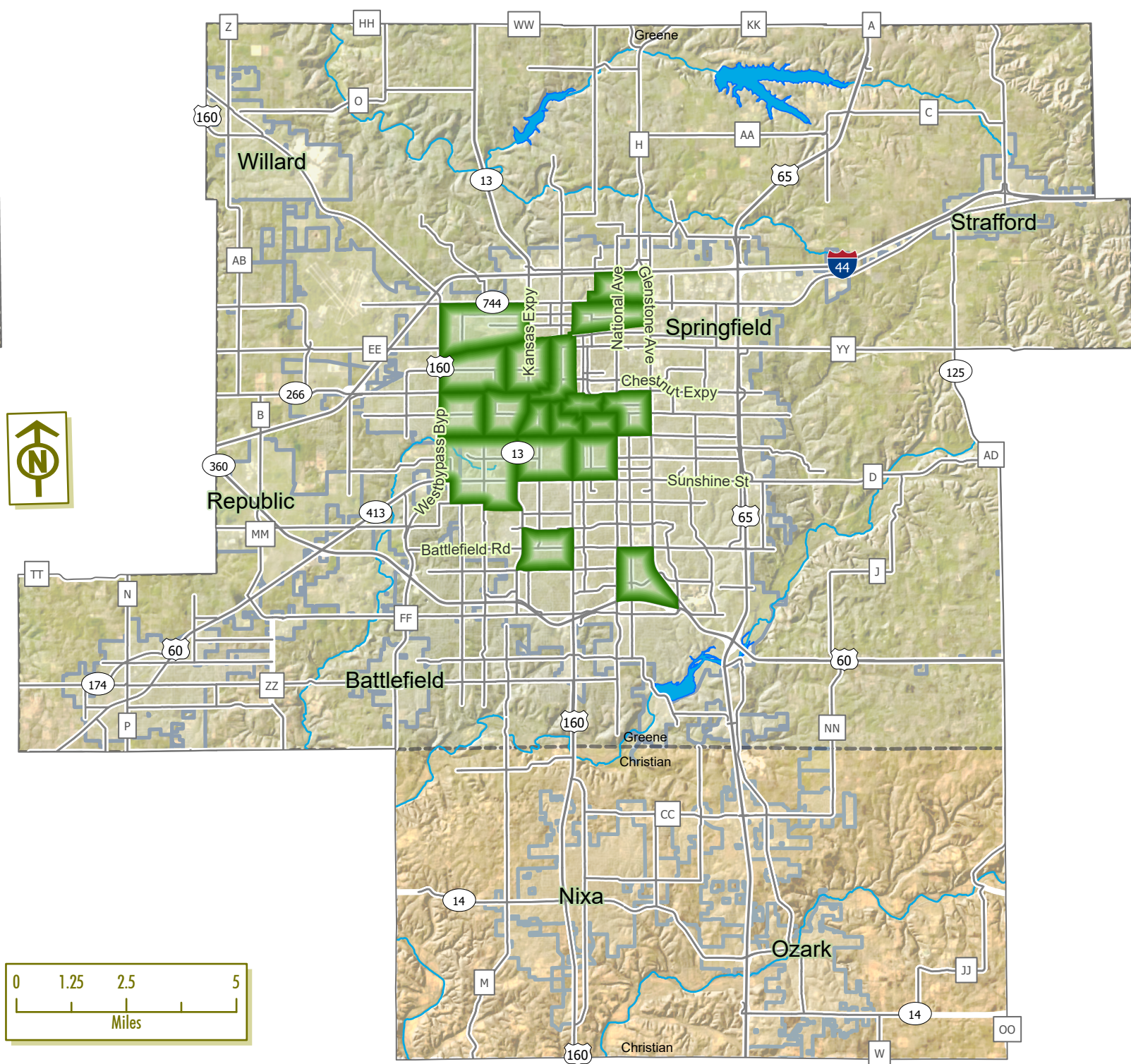
- High
- Highest

OTO safety scores are based on 5yr crash statistics for intersections retrieved from the MoDOT Central Office. The scores are compiled using 5yr average actual crash rates, 5yr average injury crashes, & 5yr average fatal crashes.

Environmental Justice Areas: Minority Population



Environmental Justice Areas: Low-Income Population



Census Tracts

Percent Minority Population

 $\geq 14.2\%$ Minority (2 points)

Environmental Justice areas are considered to be census tracts within the OTO that a 1.5 times or greater than the tract average for percent minority and percent of individuals living below poverty level, 9.47% & 17.7%, respectively according to the 2019 5-Yr American Community Survey.

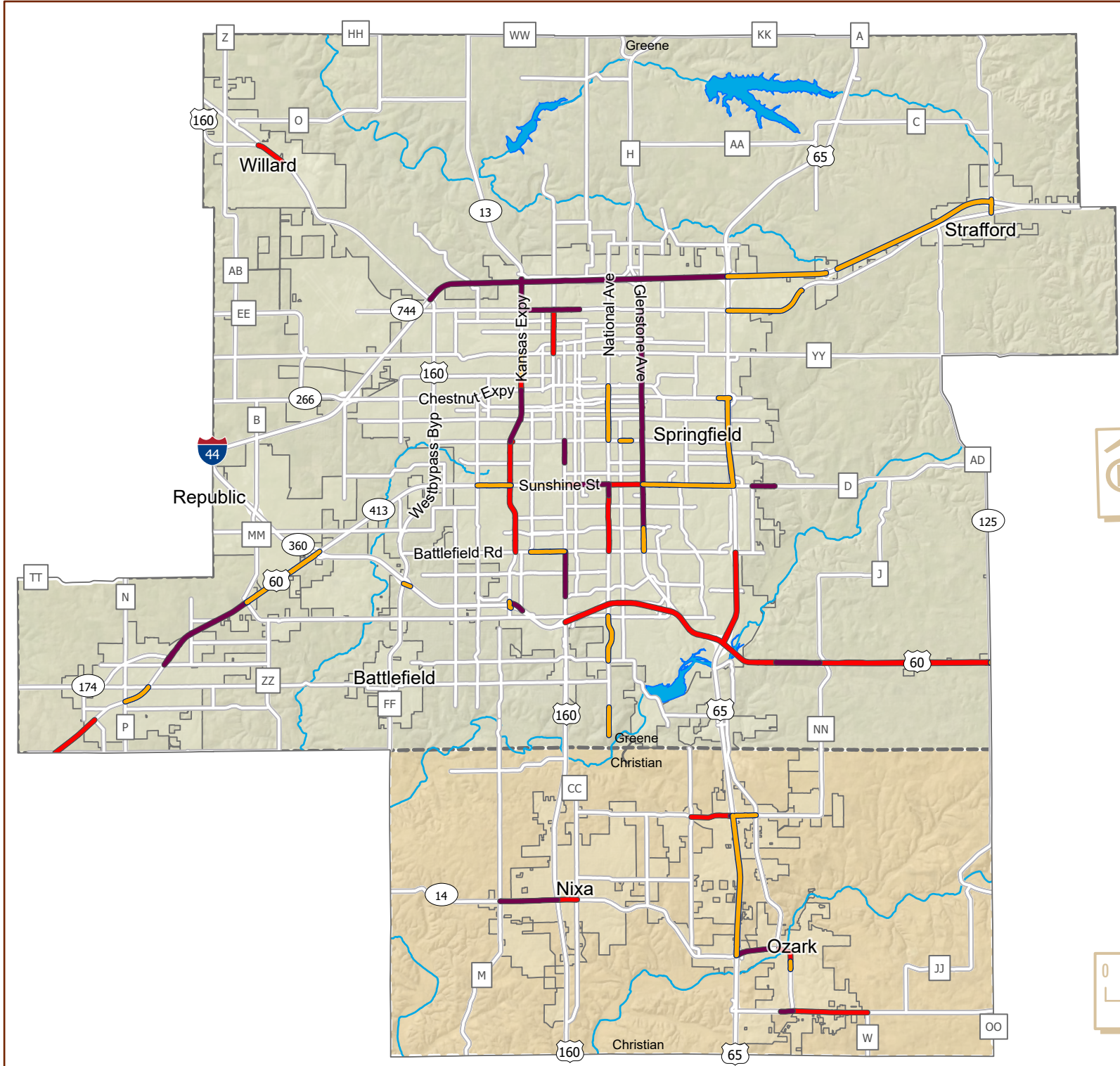


Census Tracts

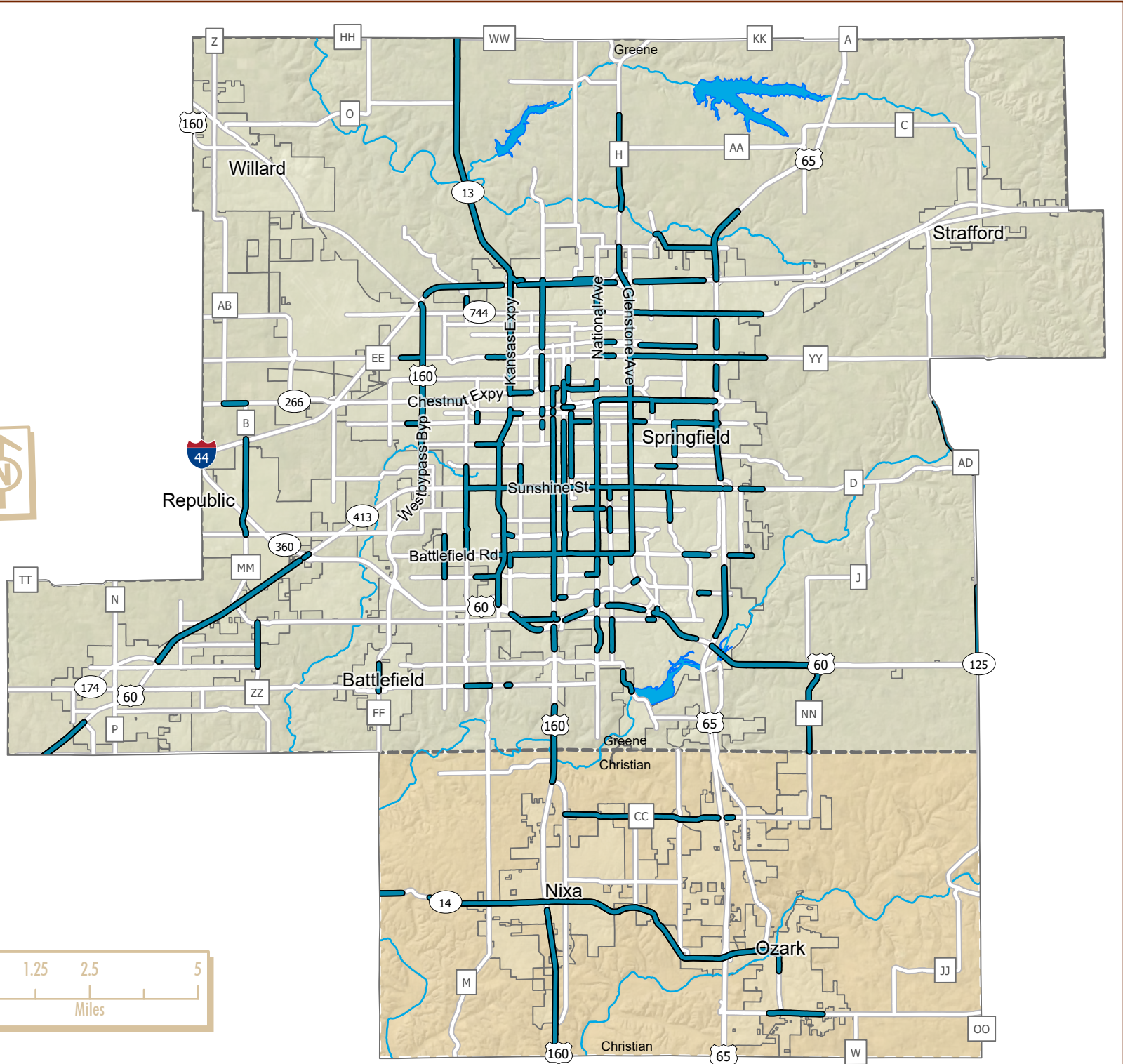
Percent Living Below Poverty

 > or = 26.52% (2 points)

Current Volume-to-Capacity



Future Volume-to-Capacity



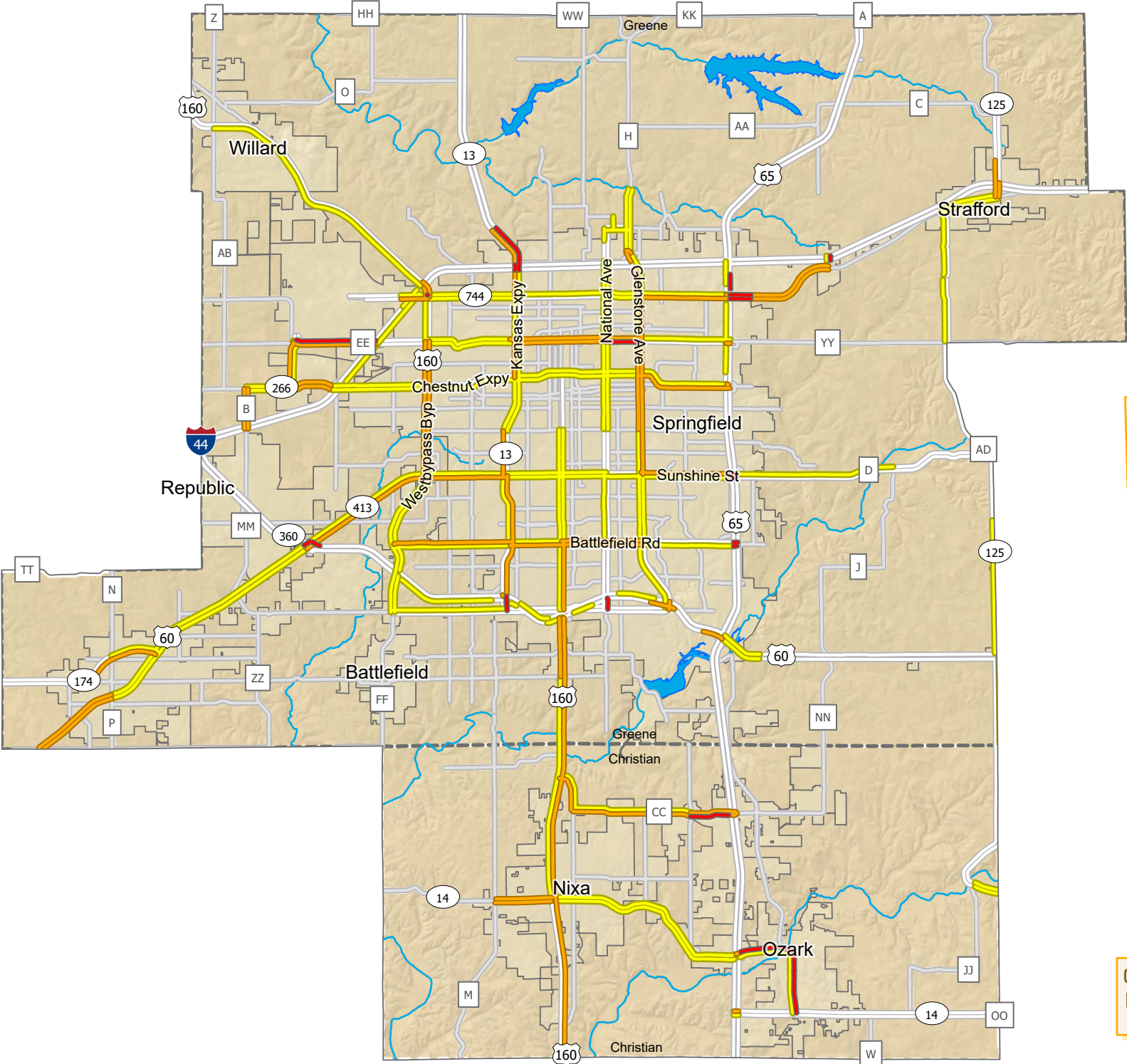
- Current Volume-to-Capacity
- 1.42 - 1
 - .99 - .92
 - .91 - .86
 - .85 - 0

Future volume-to-capacity ratios were taken from the updated OTO 2045 no-build model run. Current volume-to-capacities were calculated by subtracting bus and combo-semi traffic from AADT and applying a multiplier of 3 then re-adding the product to the remainder AADT to estimate a passenger car equivalent volume.

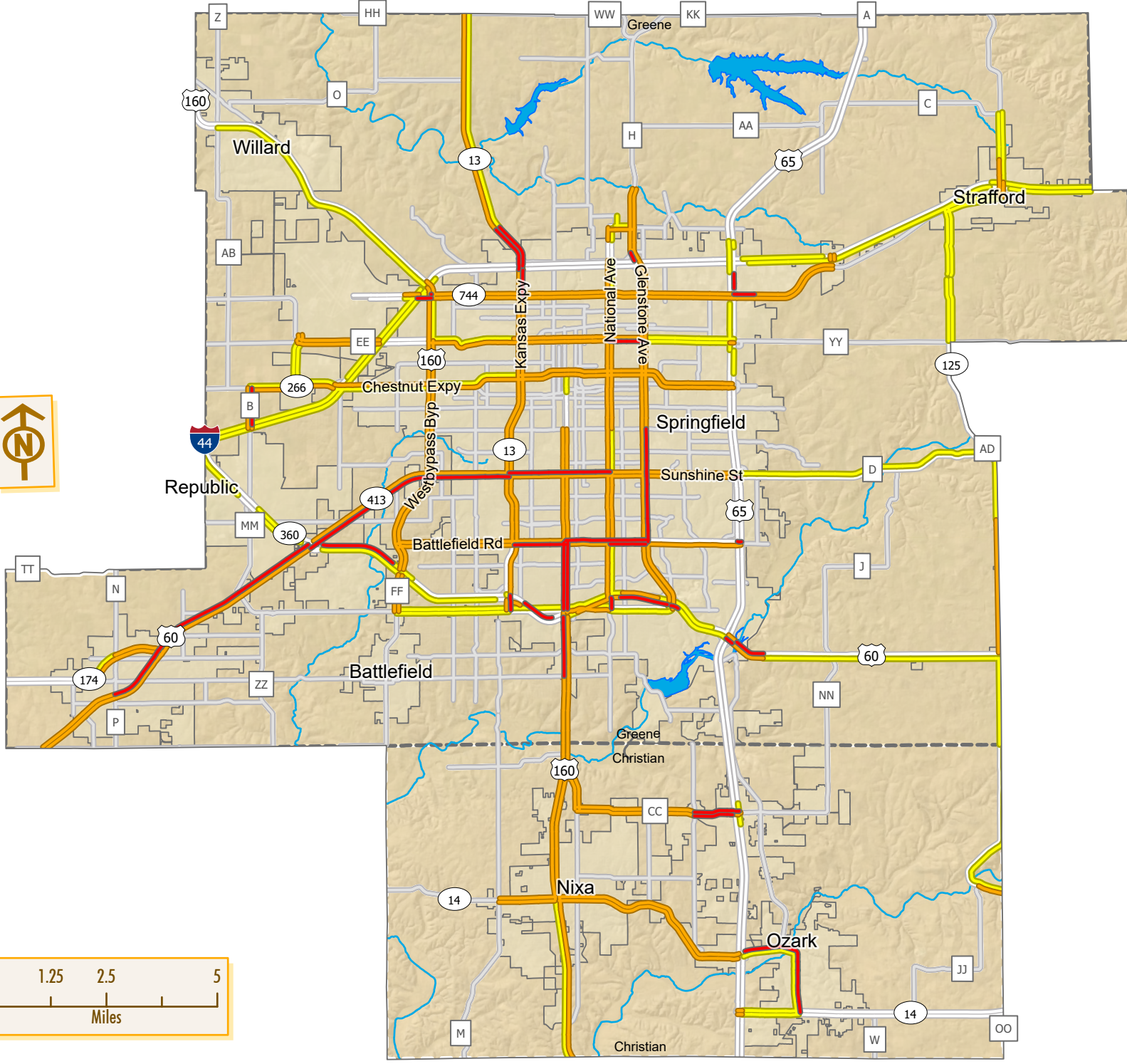


- Future Volume-to-Capacity
- 1.67 - .86
 - .85 - 0

AM Travel Delay 2021



PM Travel Delay 2021



Arterial Travel Speed

- > 20 mph Below the Posted Speed Limit (14 points)
- 20 to 10 mph Below the Posted Speed Limit (10 points)
- 10 mph to 5 mph Below the Posted Speed Limit (4 points)
- < 5 mph Below the Posted Speed Limit (0 points)

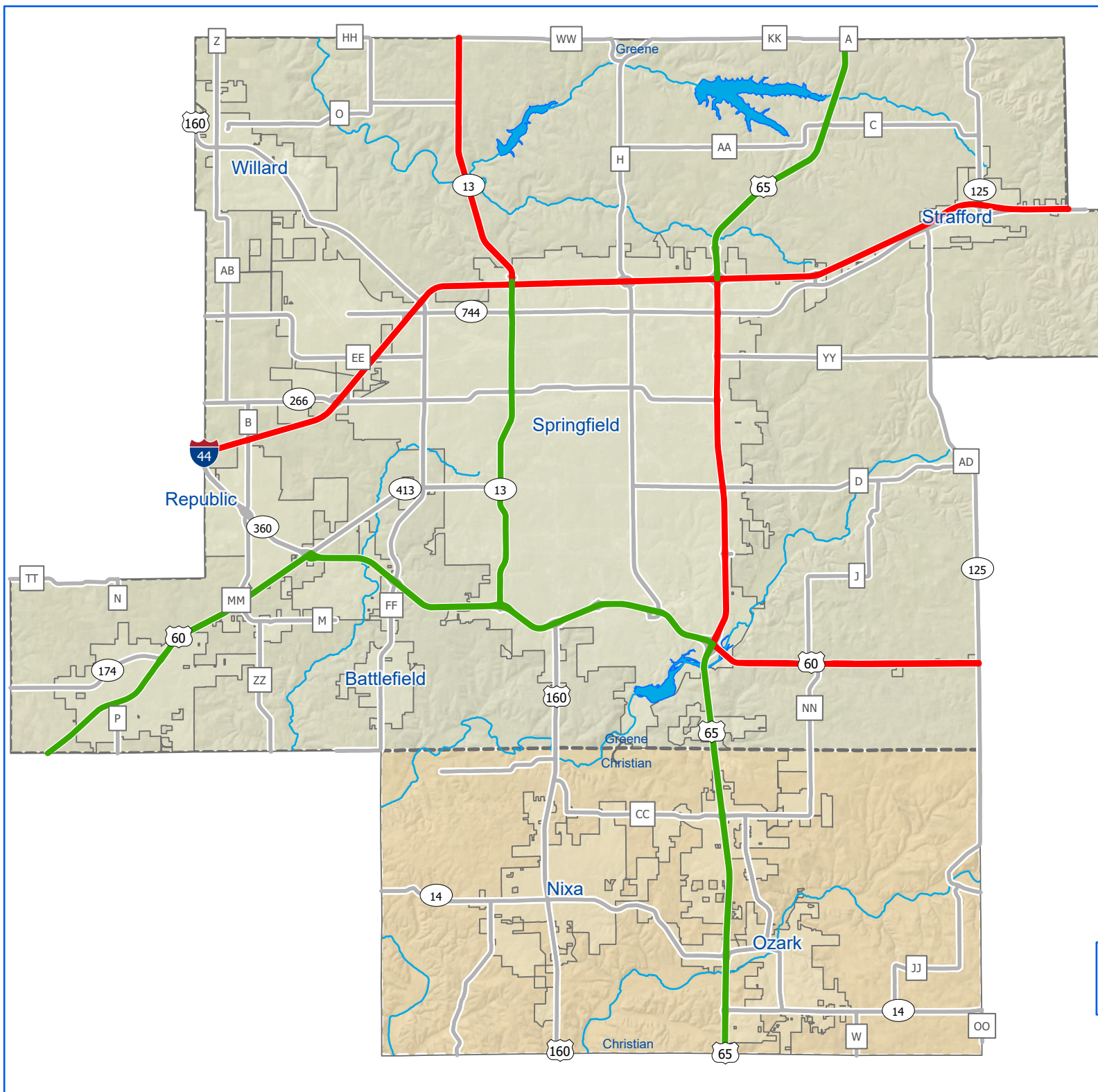
Source: Acyclica, Here, & INRIX probe data taken throughout the spring of 2021.



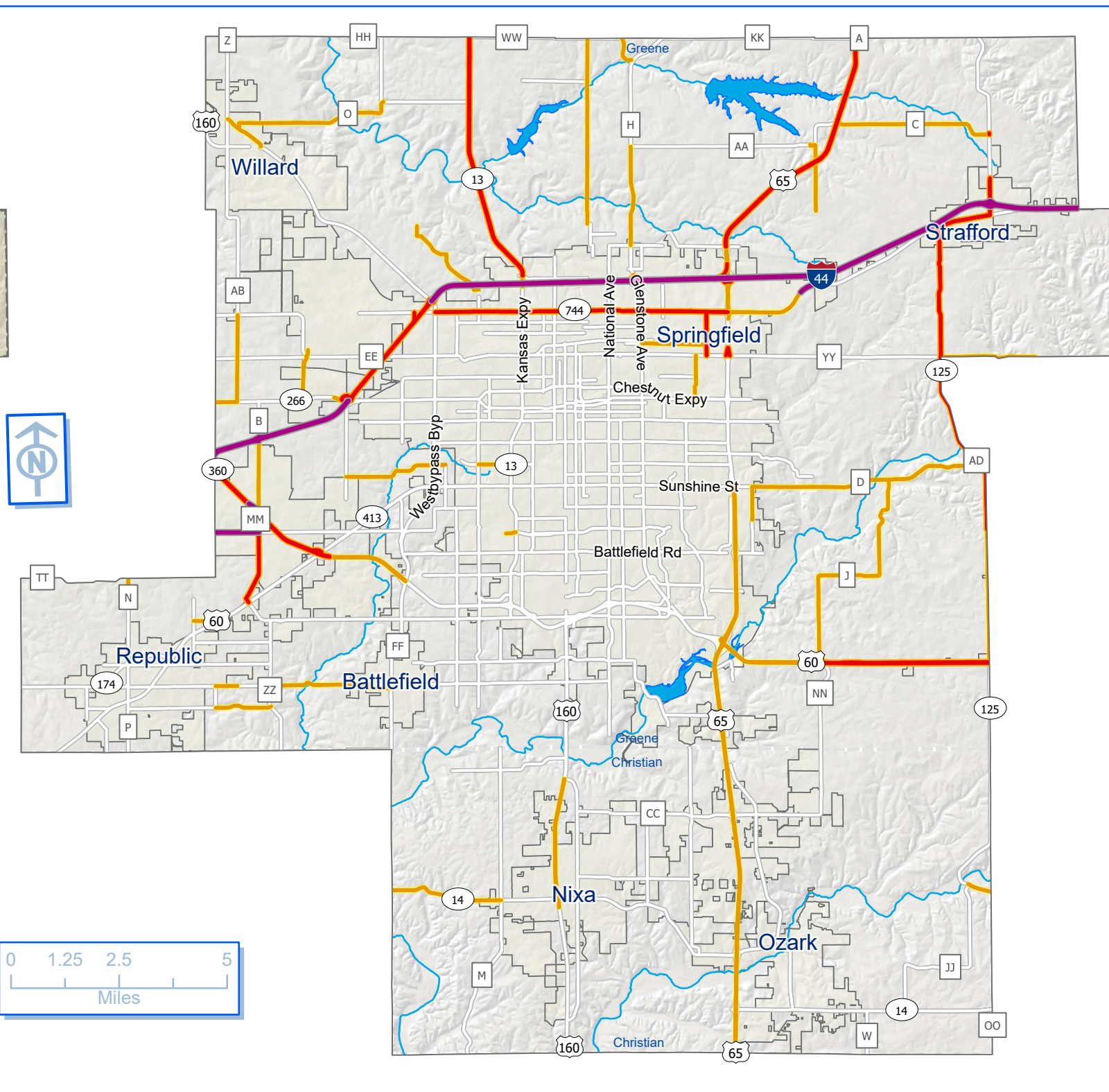
Freeway Travel Speed

- > 10 mph Below the Posted Speed Limit (14 points)
- 10 mph to 5 mph Below the Posted Speed Limit (10 points)
- 5 mph to 0 mph Below the Posted Speed Limit (4 points)
- < 0 mph Below the Posted Speed Limit (0 points)

Missouri Freight Network



Commercial Traffic as a Percent of MoDOT 2020 AADT



Freight Network

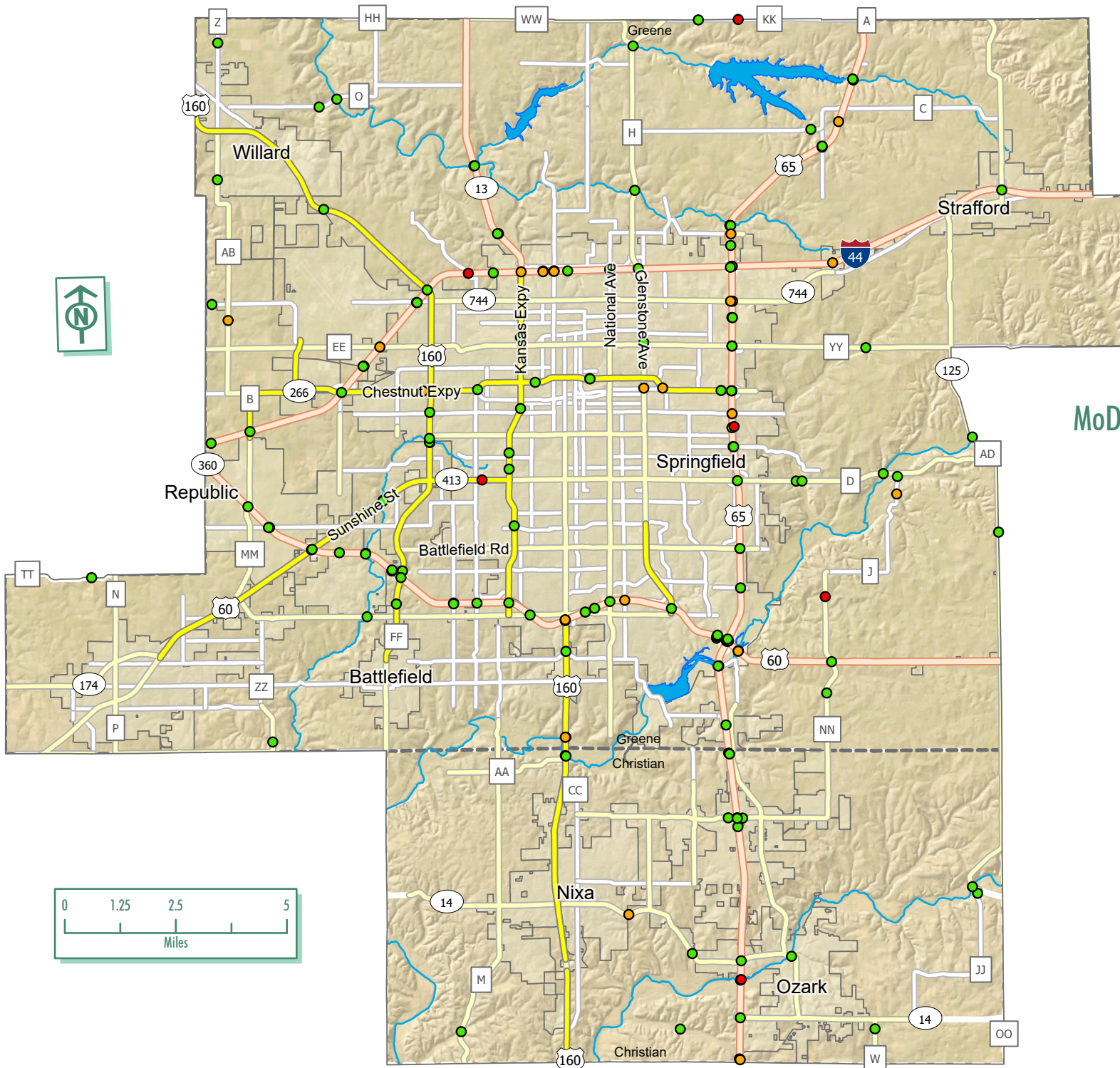
- Tier 1 (2 points)
- Tier 2 (1 point)
- Tier 4 (0 points)

Sources: 2017 Freight Plan. Freight Network recreated from Springfield inset on p. 3-22. Percentage of commercial traffic from the MoDOT 2020 State of the System Segment GIS file retrieved from the Central Office in April of 2021.



Percent of Commercial Traffic

- > 20% (3 points)
- 20% - 15% (2 points)
- 15% - 10% (1 point)
- < 10% (0 points)



MoDOT 2020 Bridge Condition

Bridge Condition Rating

- 3 - 4 (Poor)
- 5 (Fair)
- 6 - 8 (Fair/Good)

Source: MoDOT SW District Office
4/6/2021