

Before and After Travel Time Analysis



Roadway Improvement Projects

US 65 – James River Freeway to Rte CC

James River Freeway – US 65 to National Ave

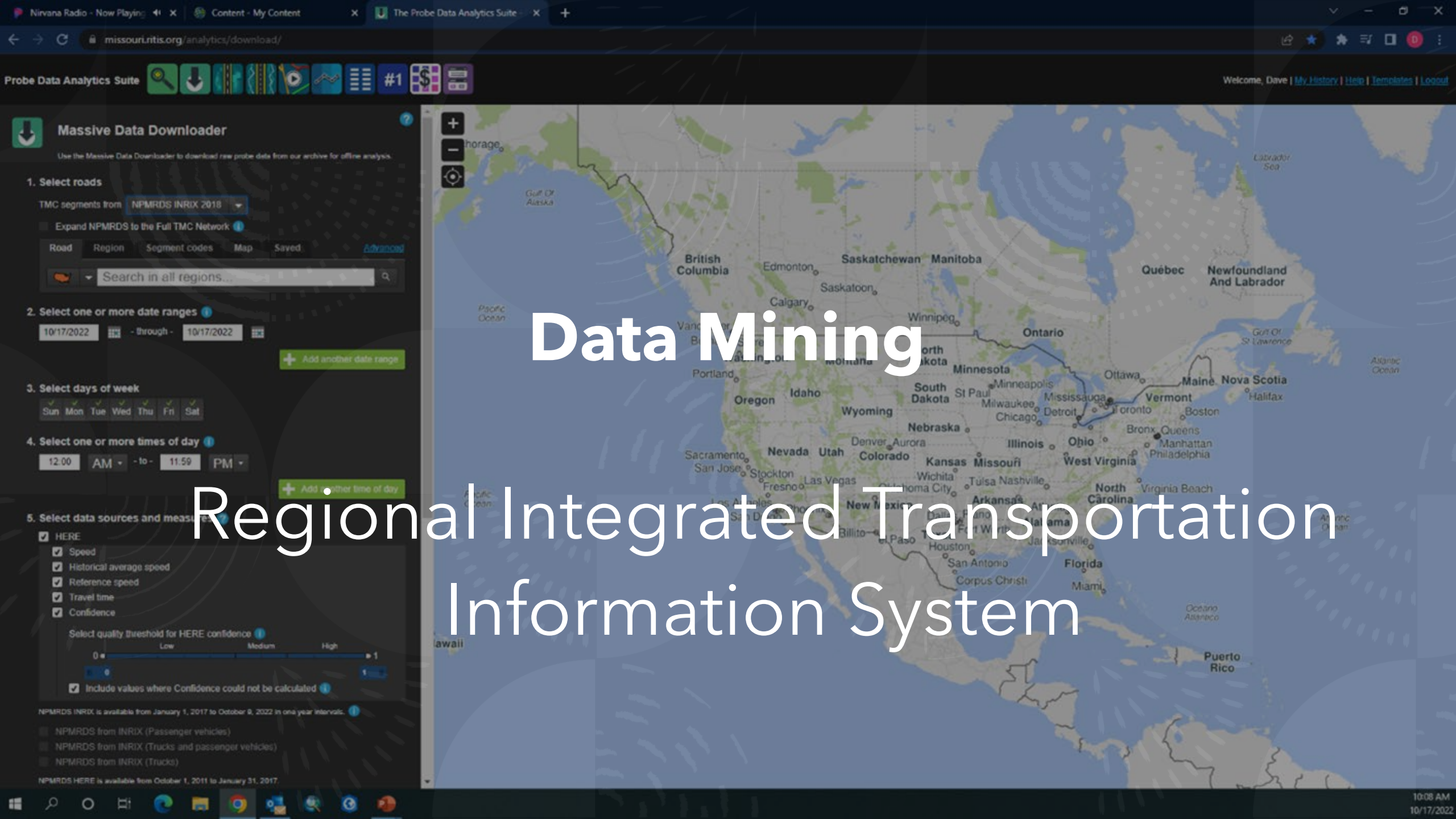
US 160 – Springfield to Willard

Hwy 14 – US 160 to Rte M (Nixa)

Hwy 14 – US 65 to Business 65/South (Ozark)

Business Loop 65/South – US 65 to Hwy 14/Selmore (Ozark)

Rte 174/US 60 Intersection (Republic)



Data Mining

Regional Integrated Transportation Information System

AutoSave Off SegBook.xlsx Search (Alt+Q)

File Home Insert Page Layout Formulas Data Review View Help ACROBAT

Default

Keep Exit New Options

Normal Page Break Preview Page Layout Custom Views

Navigation Gridlines Headings

Zoom 100% Zoom to Selection

New Window Arrange All Freeze Panes Hide Unhide

View Side by Side Synchronous Scrolling Reset Window Position

Sheet View Workbook Views Show Zoom Window

Hwy 14 West Bound from US 160 to Hwy M												
	AM			MidDay			PM			Avg	Std	
	pcntle15	pcntle50	pcntle85	pcntle15	pcntle50	pcntle85	pcntle15	pcntle50	pcntle85			
40	November	23	29	34	25	28	32	20	25	28	25.84833	4.332222
41	December	25	31	34	25	28	33	23	26	31	26.88297	3.994432
42	2020											
43	January	23	28	34	25	29	33	22	26	31	27.01251	4.442298
44	February	22	28	34	26	29	34	22	26	31	27.26909	4.588648
45	March	25	29	34	25	28	33	22	26	32	27.37319	4.564611
46	April	27	32	35	25	28	33	24	27	32	28.60947	3.708412
47	May	25	31	36	25	28	33	23	27	32	28.09167	4.489316
48	June	25	28	34.15	25	28	33	23	26	32	28.02918	4.75514
49	July	25	28	35	25	28	33	23	26	32	28.09545	4.587739
50	August	24	27	35	25	28	33	22	25	32	27.45644	4.487995
51	September	24	27	36	26	28	33	22	25	32	27.60379	4.191493
52	October	23	26	34	25	28	33	23	26	32	27.85967	3.956929
53	November	23	26	35	25	28	33	23	26	33	27.93899	3.944035
54	December	24	28	35	24	27	32	22	25	31	26.05254	3.789753
55	2021											
56	January	24	29	35	24	26	32	21	24	29	25.11706	3.843012
57	February	24	29	35	24	26	31	22	25	28	25.35417	3.616861
58	March	23	28	35	23	26	29	20	23	28	24.81558	4.101076
59	April	23	28	34	23	26	29	19	24	32	24.90675	4.519337
60	May	21	27	34	23	26	31	21	24	31	24.74091	5.163004
61	June	23	28	35	25	28	33	23	27	32	28.6875	4.158711
62	July	31	34	38	29	33	35	28	33	36	32.80708	2.901996
63	August	31	34	38	32	34	36	32	35	37	34.24428	2.289869
64	September	28	32	37	32	34	36	31	34	36	33.82992	2.46019
65	October	28	33	38	32	35	37	33	35	37	34.38849	2.082524
66	November	28	33	37	32	34	37	32	35	37	34.00341	2.289321
67	December	29	34	38	32	34	37	33	35	37	34.38636	2.241561
68	2022											
69	January	29	33	37	32	35	37	33	35	38	34.89015	2.018308
70	February	27	32	36	30	34	36	32	34	37	34.0875	2.661979
71	March	27	32	36	31	33	36	32	34	36	33.9558	2.268703
72	April	28	32	37	32	34	36	32	34	36	34.51417	2.073827
73	May	29	34	39	32	35	37	34	36	38	35.60181	2.018346
74	June	31	34	38	32	34	36	34	36	38	35.4072	2.174925



Data Engineering

US 65 - JRF to Rte CC

Improvement type: Six-lane					
Travel Direction	Miles	Before Speed/Time (minutes)	After Speed/Time (minutes)	Travel Time Savings (TTS) (seconds)	Value of TTS (Present Year)
South	3.51	58.8 mph/(3.58)	66.2 mph/(3.19)	23.9	\$9,615,728
North	3.47	60.1 mph/(3.47)	66.4 mph/(3.14)	19.9	\$5,087,944
					\$14,703,673

JRF - US 65 to National

Improvement type: Six-lane/Interchange Improvements					
Travel Direction	Miles	Before Speed/Time (minutes)	After Speed/Time (minutes)	Travel Time Savings (TTS) (seconds)	Value of TTS (Present Year)
East	3.38	62.9 mph/(3.22)	64.7 mph/(3.13)	5.6	\$2,395,515
West	3.36	65.1 mph/(3.09)	66.1 mph/(3.05)	2.9	\$1,088,965
					\$3,484,481

US 160 - Springfield to Willard

Improvement type: Divided 4-lane/Roundabouts					
Travel Direction	Miles	Before Speed/Time (minutes)	After Speed/Time (minutes)	Travel Time Savings (TTS) (seconds)	Value of TTS (Present Year)
East	6.18	48.6 mph/(7.63)	49.7 mph/(7.45)	10.9	\$1,363,488
West	6.17	49.5 mph/(7.49)	50.5 mph/(7.34)	8.9	\$1,045,620
					\$2,409,109

US 160 - Springfield to Willard

Improvement type: Divided 4-lane/Roundabouts					
Travel Direction	Miles	Before Speed/Time (minutes)	After Speed/Time (minutes)	Travel Time Savings (TTS) (seconds)	Value of TTS (Present Year)
East	6.18	48.6 mph/(7.63)	49.7 mph/(7.45)	10.9	\$1,363,488
West	6.17	49.5 mph/(7.49)	50.5 mph/(7.34)	8.9	\$1,045,620
					\$2,409,109

Hwy 14 - US 160 to Rte M

Improvement type: Multi Five-Lane					
Travel Direction	Miles	Before Speed/Time (minutes)	After Speed/Time (minutes)	Travel Time Savings (TTS) (seconds)	Value of TTS (Present Year)
East	1.31	25 mph/(3.2)	30.6 mph/(2.58)	37.3	\$3,005,228
West	1.32	26.5 mph/(2.97)	34.9 mph/(2.26)	43.0	\$3,576,304
					\$6,581,532

Hwy 14 - US 65 to Bus Loop 65/South

Improvement type: Multi-Lane/Intersection Improvements					
Travel Direction	Miles	Before Speed/Time (minutes)	After Speed/Time (minutes)	Travel Time Savings (TTS) (seconds)	Value of TTS (Present Year)
East	2.57	28.1 mph/(5.63)	30.5 mph/(5.05)	34.9	\$1,989,404
West	2.58	27.6 mph/(5.79)	29.4 mph/(5.28)	30.5	\$2,205,065
					\$4,194,469

Bus 65/South - US 65 to Selmore

Improvement type: Multi Five-Lane/Intersection Improvements					
Travel Direction	Miles	Before Speed/Time (minutes)	After Speed/Time (minutes)	Travel Time Savings (TTS) (seconds)	Value of TTS (Present Year)
North	1.27	23.5 mph/(3.23)	33.7 mph/(2.26)	58.7	\$5,399,918
South	1.27	28.2 mph/(2.77)	33.2 mph/(2.29)	28.7	\$2,839,739
					\$8,239,656

Rte 174/US 60 Republic

Improvement type: Intersection Improvements					
Travel Direction	Miles	Before Speed/Time (minutes)	After Speed/Time (minutes)	Travel Time Savings (TTS) (seconds)	Value of TTS (Present Year)
East	0.025	25.1 mph/(0.06)	33.3 mph/(0.05)	0.87	\$81,615
West	0.025	16.6 mph/(5.79)	27 mph/(5.28)	2.46	\$576,804
					\$658,420

The top of the slide features a decorative border with a repeating pattern of semi-circles. Each semi-circle is filled with a different geometric pattern: concentric lines, a grid of dots, and radiating lines. The colors are in shades of teal and dark green.

Thank you!

The End