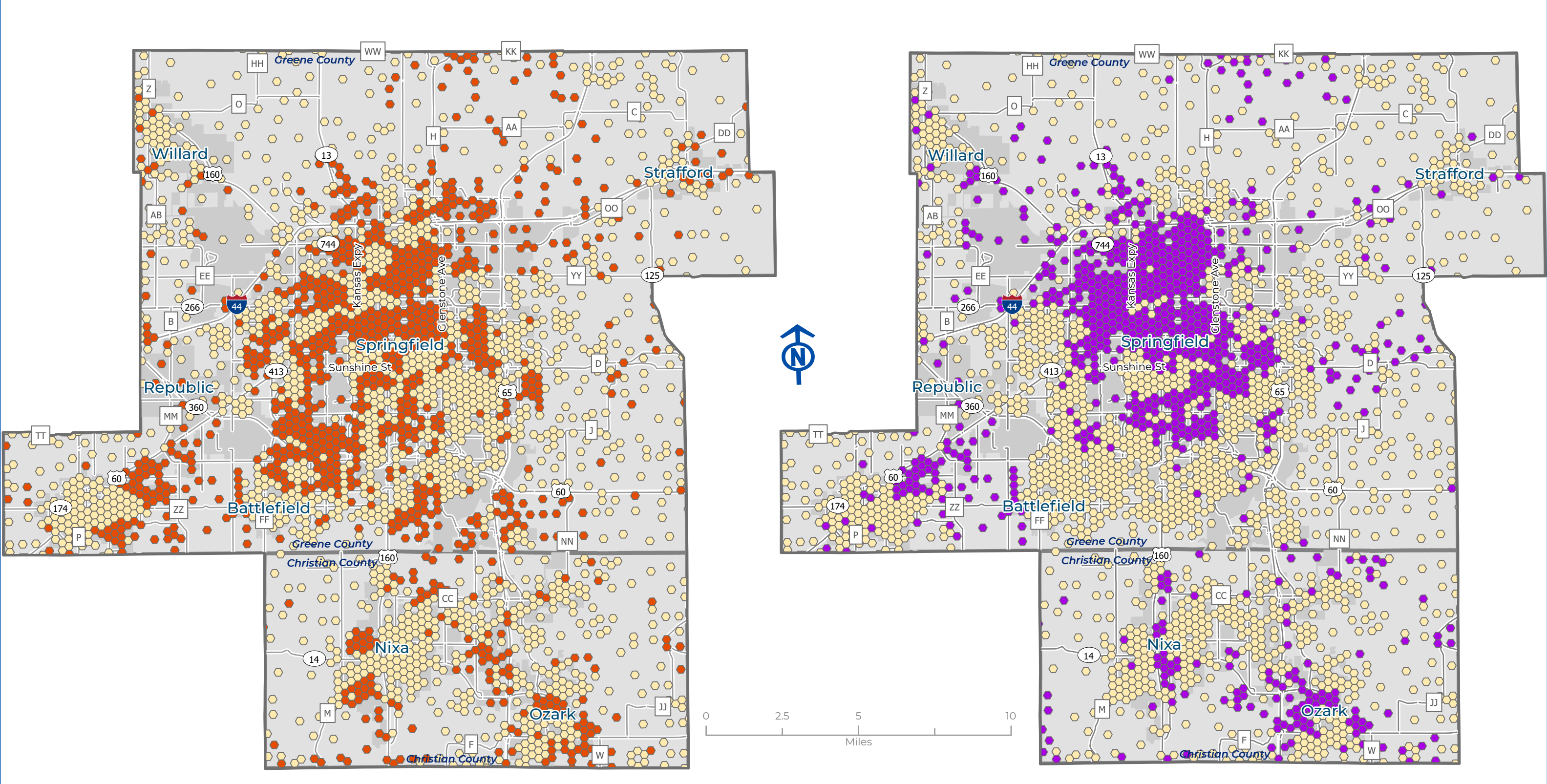


Environmental Justice



Percent Minority Population
■ > 11.2% (OTO Average) 2 points
■ <= 11.2% (0 points)

Sources: 2016 - 2020 American Community 5-yr Estimates, 2020 Decennial Census, & OTO Residential Construction Permits.



Percent Low-Income Population
■ > 16.2% (OTO average) 2 points
■ <= 16.2% (0 points)

