



U.S. Department of Transportation

Federal Transit Administration
901 Locust, Room 404
Kansas City, MO 64106
816-329-3920
816-329-3921 (fax)

Federal Highway Administration
3220 W. Edgewood, Suite H
Jefferson City, MO 65109
573-636-7104
573-636-9283 (fax)

December 19, 2016

Mr. Patrick McKenna, Director
Missouri Department of Transportation
P.O. Box 270
Jefferson City, Missouri 65102

Re: FHWA/FTA Approval of Amendment to the Missouri FY
2017-2021 STIP to incorporate the Ozarks Transportation
Organization (OTO) FY 2017-2020 Transportation Improvement
Program (TIP) Amendment #1

Dear Mr. McKenna:

The Federal Transit Administration (FTA) and Federal Highway Administration (FHWA) have reviewed the requested amendment to the FY 2017-2021 Missouri State Transportation Improvement Program (STIP) to incorporate the Ozarks Transportation Organization's (OTO) modification of their FY 2017- 2020 Transportation Improvement Program (TIP), as further described in your letter of December 19, 2016. The modification includes the addition of 4 new Missouri Department of Transportation (MoDOT) sponsored highway projects, 1 local public agency (LPA) sponsored highway project and 1 new City Utilities sponsored transit project. This amendment action also includes the modification of 1 MoDOT and 4 LPA currently programmed highway projects and 1 currently programmed LPA sponsored transit project.

The OTO Board of Directors approved the TIP amendment on October 20, 2016. The Missouri governor approved the OTO FY2017-2020 TIP amendment on December 19, 2016.

In accordance with 23 CFR 450.218(b), we have determined that this STIP amendment is based on a transportation planning process that substantially meets the requirements of 23 U.S.C 134 and 135, 49 U.S.C. 5303 and 5304 and 23 CFR 450 Subparts A, B, and C. Based on our review, this STIP amendment request is approved.

If you have any questions, please contact Jeremiah Shuler at FTA (816) 329-3040 or Brad McMahon at FHWA (573) 638-2609.

Sincerely,

Mokhtee Ahmad
Regional Administrator
Federal Transit Administration

For: For: Kevin Ward, P.E.
Division Administrator
Federal Highway Administration

cc: Sara Edwards, OTO
Shelia Schmitt, City Utilities
Greg Burris, Missouri State University
Machelle Watkins, MoDOT
Eva Voss, MoDOT
Frank Miller, MoDOT Southwest District
Sharon Monroe, MoDOT

Missouri Department of Transportation
Patrick K. McKenna, Director

1.888.ASK MODOT (275.6636)

December 19, 2016

Mr. Mokhtee Ahmad
Regional Administrator
Federal Transit Administration
901 Locust, Room 404
Kansas City, MO 64106

Mr. Kevin Ward
Division Administrator
Federal Highway Administration
3220 West Edgewood, Suite H
Jefferson City, MO 65109

Dear Messrs. Ahmad and Ward:

SUBJECT: Springfield Metropolitan Area
Ozarks Transportation Organization (OTO)
FY 2017-2020 Transportation Improvement Program (TIP)
Approval Request to Incorporate OTO TIP Amendment #1 into FY17-21 STIP

As required by the Fixing America's Surface Transportation (FAST) Act, MoDOT received approval from Governor Nixon for the TIP amendment for the Springfield metropolitan area. The TIP amendment covers the addition of six projects: four MoDOT projects, one locally sponsored project, and one transit project. The amendment also includes six modifications: one MoDOT project, four locally sponsored projects, and one transit project.

Enclosed is a copy of the Governor's approval letter and supporting documentation. The OTO Board of Directors approved the TIP amendment on October 20, 2016. All public involvement considerations were met and fiscal constraint has been ensured.

We request approval of incorporating this TIP amendment into the FY 2017-2021 State Transportation Improvement Program (STIP) at your earliest convenience.

Sincerely,

Angie S. Hoecker
Senior Transportation Planner

Enclosure

Copies: Brad McMahon-FHWA Jeremiah Shuler-FTA



Our mission is to provide a world-class transportation experience that delights our customers and promotes a prosperous Missouri.

www.modot.org

Missouri Department of Transportation
Patrick K. McKenna, Director

1.888.ASK MODOT (275.6636)

October 24, 2016

The Honorable Jeremiah W. (Jay) Nixon
Governor of Missouri
State Capitol
Jefferson City, MO 65101

Dear Governor Nixon:

On October 20, 2016, the Ozarks Transportation Organization (OTO) Board of Directors approved an amendment to the FY 2017-2020 Transportation Improvement Plan (TIP) for the Springfield, Missouri, metropolitan area. The TIP amendment covers the addition of six projects: four MoDOT projects, one locally sponsored project, and one transit project. The amendment also includes six modifications: one MoDOT project, four locally sponsored projects, and one transit project. MoDOT is satisfied the federal requirements have been met in the development of this TIP amendment, including the opportunity for the public to comment on projects. No comments were received.

Enclosed is a copy of the TIP amendment for your review. We request approval of this action at your earliest convenience, so project authorization can proceed in the Springfield metropolitan area.

Sincerely,



Ben Reeser
Long-Range Transportation Planning Coordinator

ev
Enclosure

Approved:


Title: Governor of Missouri

Date: Dec. 16, 2016



Our mission is to provide a world-class transportation experience that delights our customers and promotes a prosperous Missouri.

www.modot.org



OZARKS TRANSPORTATION ORGANIZATION
A METROPOLITAN PLANNING ORGANIZATION

205 PARK CENTRAL EAST, SUITE 205 SPRINGFIELD, MO 65806 417-865-3042 [p] 417-862-6013 [f]

20 October 2016

Ms. Eva Voss
Transportation Planning
Missouri Department of Transportation
P. O. Box 270
Jefferson City, Missouri 65102

Dear Ms. Voss:

We respectfully request the approval of the FY 2017-2020 Ozarks Transportation Organization Transportation Improvement Program (TIP) Amendment Number One. The Board of Directors adopted this amendment on October 20, 2016. The adoption included demonstration of fiscal constraint as required by federal regulations. Public comment was taken in accordance with federal law and in accordance with the OTO Public Involvement Policy and no public comment was received. This amendment includes twelve changes that are outlined on the following page.

Please find enclosed the requested TIP amendment. Please let me know if you need any other information.

Sincerely,

Natasha L. Longpine, AICP
Principal Planner

Enclosure: TIP Approval Packet



OZARKSTRANSPORTATION.ORG

Amendment Number One to the FY 2017-2020 Transportation Improvement Program

Ozarks Transportation Organization (Springfield, MO Area MPO)

AGENDA DESCRIPTION:

Twelve changes are proposed for Amendment Number 1 to the FY 2017-2020 Transportation Improvement Program. Projects 5, 7, 8, and 9 are resulting from the OTO/MoDOT Intersection Cost Share Program.

1. ***Revised*** Finley River Park Connection (EN1503-17A1)
Project is being reprogrammed from the FY 2015-2018 TIP to the current TIP, as all funding was not obligated by September 30, 2016. The remaining programmed amount is \$130,657.
2. ***Revised*** Harley Road Sidewalks (EN1504-17A1)
Project is being reprogrammed from the FY 2015-2018 TIP to the current TIP, as all funding was not obligated by September 30, 2016. The remaining programmed amount is \$150,083.
3. ***Revised*** McGuffey Park Connection Sidewalks (EN1505-17A1)
Project is being reprogrammed from the FY 2015-2018 TIP to the current TIP, as all funding was not obligated by September 30, 2016. The remaining programmed amount is \$36,524.
4. ***Revised*** South Dry Sac Trail Connections (EN1507-17A1)
Project is being reprogrammed from the FY 2015-2018 TIP to the current TIP, as all funding was not obligated by September 30, 2016. The remaining programmed amount is \$240,850.
5. ***New*** 160/Tracker and 160/Northview Intersections (NX1801-17A1)
This is a new project, adding scoping for intersection improvements at Tracker and Northview with Route 160. The total programmed amount is \$5,000 in state funding.
6. ***Revised*** Intersection Improvements at Jackson and NN (OK1401-17A1)
Project Engineering and Right-of-Way is being reprogrammed from the FY 2015-2018 TIP to the current TIP, as all funding was not obligated by September 30, 2016. MoDOT-AC funding was also reclassified as MoDOT funding. The remaining programmed amount is \$654,000.
7. ***New*** South and Third in Ozark (OK1801-17A1)
This is a new project, adding scoping for intersection improvements at South and Third in Ozark. The total programmed amount is \$5,000 in state funding.
8. ***New*** M Highway and Repmo Drive/FR103 Intersection (RP1801-17A1)
This is a new project, adding scoping for intersection improvements at Republic Road and Repmo Drive/Farm Road 103 near the Republic High School. The total programmed amount is \$5,000 in state funding.

9. ***New* I-44 and Route 125 Improvements (ST1801-17A1)**

This is a new project, adding scoping for improvements to ramp intersections on the I-44 and Route 125 Interchange. The total programmed amount is \$5,000 in state funding.

10. ***New* Miller Road Widening (WI1701-17A1)**

This is a new project, adding engineering, right-of-way, utilities, and construction for the widening of Miller Road in Willard. This project utilizes STPBG-U funding of \$974,896 with a total programmed amount of \$1,525,000.

11. ***New* Purchase Fixed Route Buses (CU1711-17A1)**

City Utilities received a discretionary Section 5339 Bus and Bus Facilities Grant from FTA and will be purchasing 11 buses. CU was awarded \$3,870,960 federal funds and the total programmed amount will be \$4,838,700.

12. ***Revised* 5310-Council of Churches (MO1726-17A1)**

The Council of Churches submitted an additional request through the LCB for Transit for a second vehicle for their paratransit service, to be funded through the FTA Section 5310 Elderly and Disabled Transportation Program. Local funding is provided by the Council of Churches. This vehicle will support their Eldercare Transit program. The total programmed amount is now \$130,000 from \$65,000.

TECHNICAL PLANNING COMMITTEE ACTION TAKEN:

At its regularly scheduled meeting on September 21, 2016, the Technical Planning Committee reviewed the presented projects. Those numbered 5, 7, 8, 9, 10, 11, and 12 were recommended for approval as TIP Amendment Number One to the Board of Directors. Initially, items numbered 1, 2, 3, 4, and 6 were presented as Administrative Modification Number One. Due to a reconsideration of the Administrative Modification Guidelines regarding moving projects from a prior adopted TIP to the current TIP, these projects have been incorporated into TIP Amendment Number One for consideration by the Board of Directors. When these five projects were presented to the TPC, there were no comments received from the membership.

BOARD OF DIRECTORS ACTION REQUESTED:

The Board of Directors unanimously approved the following motion at its regularly scheduled meeting on October 20, 2016:

“Move to approve Amendment Number One to the FY 2017-2020 Transportation Improvement Program.”



Transportation Improvement Program - FY 2015-2018

Project Detail by Section and Project Number with Map

D) Bicycle & Pedestrian Section

TIP # EN1503 **FINLEY RIVER PARK CONNECTION**

Route North 4th and East Parkside

From Neil Grubagh Park

To Finley River Park

Location/Agency

Federal Agency

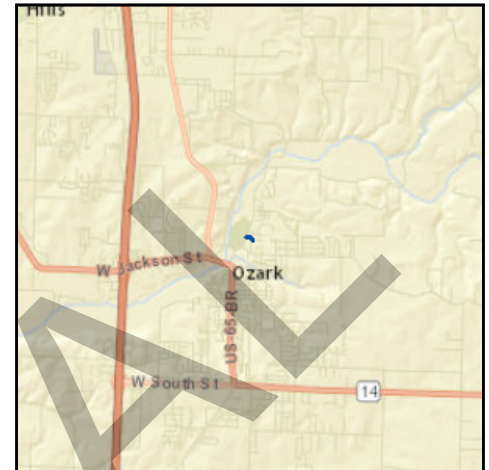
Responsible Agency City of Ozark

Federal Funding Category TAP

MoDOT Funding Category None

AC Year of Conv.

STIP # 9901811



Project Description

Sidewalk connection between Finley River Park and Neil Grubagh Park, including crosswalks and curb ramps.

Fund Code	Source	Phase	FY2015	FY2016	FY2017	FY2018	Total
FHWA (TAP)	Federal	ENG	\$18,441	\$18,599	\$0	\$0	\$37,040
LOCAL	Local	ENG	\$4,610	\$4,650	\$0	\$0	\$9,260
FHWA (TAP)	Federal	CON	\$0	\$85,926	\$0	\$0	\$85,926
LOCAL	Local	CON	\$0	\$21,482	\$0	\$0	\$21,482
Totals			\$23,051	\$130,657	\$0	\$0	\$153,708

Notes

Source of Local Funds: Ozark School District and City of Ozark general fund.

Prior Cost	\$0
Future Cost	\$0
Total Cost	\$153,708



Transportation Improvement Program - FY 2017-2020

Project Detail by Section and Project Number with Map

J) Pending Amendment Section

TIP # EN1503-17A1 **FINLEY RIVER PARK CONNECTION**

Route North 4th and East Parkside

From Neil Grubagh Park

To Finley River Park

Location/Agency City of Ozark

Federal Agency FHWA

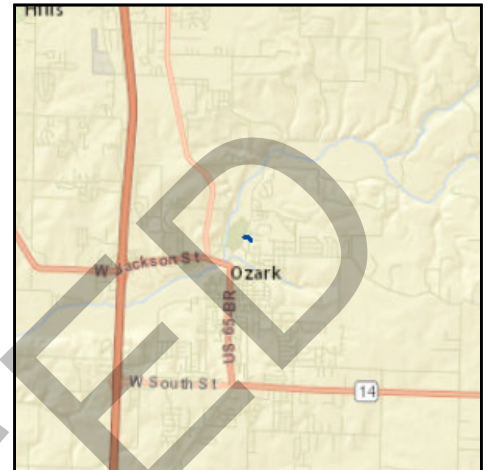
Responsible Agency City of Ozark

Federal Funding Category TAP

MoDOT Funding Category None

AC Year of Conv.

STIP # 9901811



Project Description

Sidewalk connection between Finley River Park and Neil Grubagh Park, including crosswalks and curb ramps.

Fund Code	Source	Phase	FY2017	FY2018	FY2019	FY2020	Total
FHWA (TAP)	Federal	ENG	\$18,599	\$0	\$0	\$0	\$18,599
LOCAL	Local	ENG	\$4,650	\$0	\$0	\$0	\$4,650
FHWA (TAP)	Federal	CON	\$85,926	\$0	\$0	\$0	\$85,926
LOCAL	Local	CON	\$21,482	\$0	\$0	\$0	\$21,482
Totals			\$130,657	\$0	\$0	\$0	\$130,657

Notes

Source of Local Funds: Ozark School District and City of Ozark general fund.

Prior Cost	\$23,051
Future Cost	\$0
Total Cost	\$153,708



Transportation Improvement Program - FY 2015-2018

Project Detail by Section and Project Number with Map

D) Bicycle & Pedestrian Section

TIP # EN1504 **HARTLEY ROAD SIDEWALKS**

Route East Hartley Road
From South 18th Street
To Ozark East Elementary

Location/Agency

Federal Agency

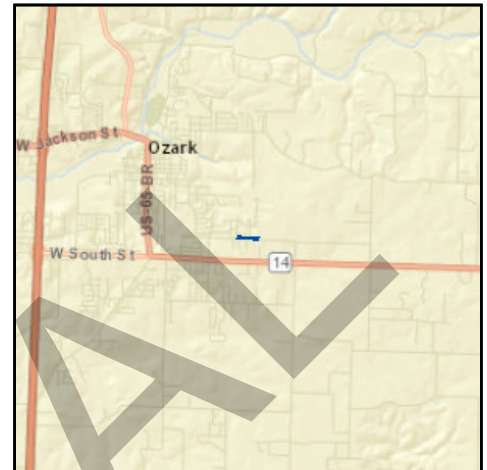
Responsible Agency City of Ozark

Federal Funding Category TAP

MoDOT Funding Category N/A

AC Year of Conv.

STIP # 9901812



Project Description

Sidewalk on the north side of East Hartley Road from South 18th Street to Ozark East Elementary, including ramps and crosswalks.

Fund Code	Source	Phase	FY2015	FY2016	FY2017	FY2018	Total
FHWA (TAP)	Federal	ENG	\$21,569	\$24,042	\$0	\$0	\$45,611
LOCAL	Local	ENG	\$5,392	\$6,011	\$0	\$0	\$11,403
FHWA (TAP)	Federal	CON	\$0	\$96,024	\$0	\$0	\$96,024
LOCAL	Local	CON	\$0	\$24,006	\$0	\$0	\$24,006
Totals			\$26,961	\$150,083	\$0	\$0	\$177,044

Notes

Source of Local Funds: Ozark School District and City of Ozark general funds.

Prior Cost	\$0
Future Cost	\$0
Total Cost	\$177,044



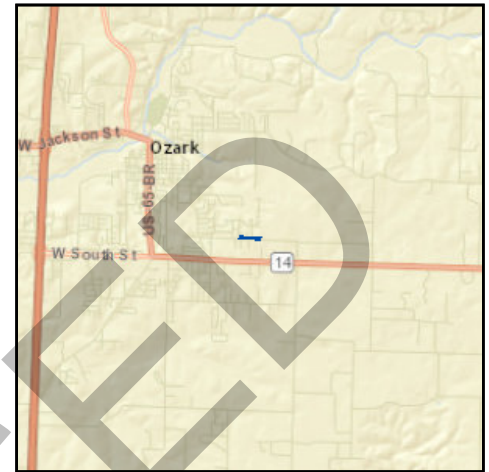
Transportation Improvement Program - FY 2017-2020

Project Detail by Section and Project Number with Map

J) Pending Amendment Section

TIP # EN1504-17A1 **HARTLEY ROAD SIDEWALKS**

Route East Hartley Road
From South 18th Street
To Ozark East Elementary
Location/Agency City of Ozark
Federal Agency FHWA
Responsible Agency City of Ozark
Federal Funding Category TAP
MoDOT Funding Category N/A
AC Year of Conv.
STIP # 9901812



Project Description

Sidewalk on the north side of East Hartley Road from South 18th Street to Ozark East Elementary, including ramps and crosswalks.

Fund Code	Source	Phase	FY2017	FY2018	FY2019	FY2020	Total
FHWA (TAP)	Federal	ENG	\$24,042	\$0	\$0	\$0	\$24,042
LOCAL	Local	ENG	\$6,011	\$0	\$0	\$0	\$6,011
FHWA (TAP)	Federal	CON	\$96,024	\$0	\$0	\$0	\$96,024
LOCAL	Local	CON	\$24,006	\$0	\$0	\$0	\$24,006
Totals			\$150,083	\$0	\$0	\$0	\$150,083

Notes

Source of Local Funds: Ozark School District and City of Ozark general funds.

Prior Cost	\$26,961
Future Cost	\$0
Total Cost	\$177,044



Transportation Improvement Program - FY 2015-2018

Project Detail by Section and Project Number with Map

D) Bicycle & Pedestrian Section

TIP # EN1505 **MCGUFFEY PARK CONNECTION SIDEWALKS**

Route W. Ivy Creek Dr., N. 11th St., N. 12th St.

From McGuffey Park Subdivision

To Ozark Upper Elementary

Location/Agency

Federal Agency

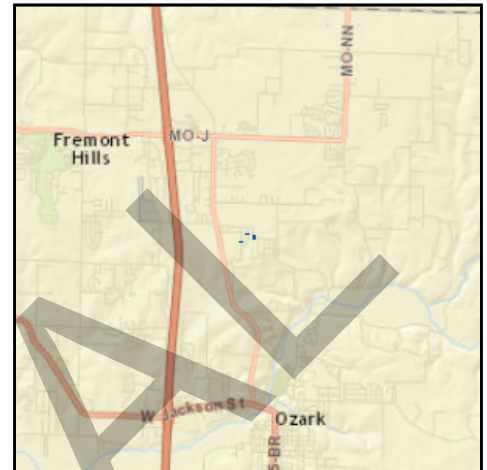
Responsible Agency City of Ozark

Federal Funding Category TAP

MoDOT Funding Category N/A

AC Year of Conv.

STIP # 9901813



Project Description

Sidewalk along three streets in the McGuffey Park Subdivision to create an uninterrupted route to Ozark Upper Elementary School, including West Ivy Creek Drive, North 11th Street, and North 12th Street.

Fund Code	Source	Phase	FY2015	FY2016	FY2017	FY2018	Total
FHWA (TAP)	Federal	ENG	\$10,815	\$7,579	\$0	\$0	\$18,394
LOCAL	Local	ENG	\$2,704	\$1,895	\$0	\$0	\$4,599
FHWA (TAP)	Federal	CON	\$0	\$21,640	\$0	\$0	\$21,640
LOCAL	Local	CON	\$0	\$5,410	\$0	\$0	\$5,410
Totals			\$13,519	\$36,524	\$0	\$0	\$50,043

Notes

Source of Local Funds: Ozark School District and City of Ozark general fund.

Prior Cost	\$0
Future Cost	\$0
Total Cost	\$50,043



Transportation Improvement Program - FY 2017-2020

Project Detail by Section and Project Number with Map

J) Pending Amendment Section

TIP # EN1505-17A1 MCGUFFEY PARK CONNECTION SIDEWALKS

Route W. Ivy Creek Dr., N. 11th St., N. 12th St.

From McGuffey Park Subdivision

To Ozark Upper Elementary

Location/Agency City of Ozark

Federal Agency FHWA

Responsible Agency City of Ozark

Federal Funding Category TAP

MoDOT Funding Category N/A

AC Year of Conv.

STIP # 9901813



Project Description

Sidewalk along three streets in the McGuffey Park Subdivision to create an uninterrupted route to Ozark Upper Elementary School, including West Ivy Creek Drive, North 11th Street, and North 12th Street.

Fund Code	Source	Phase	FY2017	FY2018	FY2019	FY2020	Total
FHWA (TAP)	Federal	ENG	\$7,579	\$0	\$0	\$0	\$7,579
LOCAL	Local	ENG	\$1,895	\$0	\$0	\$0	\$1,895
FHWA (TAP)	Federal	CON	\$21,640	\$0	\$0	\$0	\$21,640
LOCAL	Local	CON	\$5,410	\$0	\$0	\$0	\$5,410
Totals			\$36,524	\$0	\$0	\$0	\$36,524

Notes

Source of Local Funds: Ozark School District and City of Ozark general fund.

Prior Cost	\$13,519
Future Cost	\$0
Total Cost	\$50,043



Transportation Improvement Program - FY 2015-2018

Project Detail by Section and Project Number with Map

D) Bicycle & Pedestrian Section

TIP # EN1507 SOUTH DRY SAC TRAIL CONNECTIONS

Route South Dry Sac Trail

From Fulbright

To David C. Murray Park

Location/Agency

Federal Agency

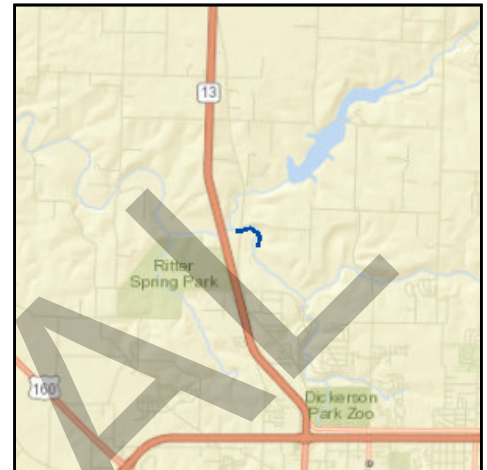
Responsible Agency Springfield-Greene County Parks

Federal Funding Category TAP

MoDOT Funding Category N/A

AC Year of Conv.

STIP # 5901806



Project Description

Missing connections on South Dry Sac Trail between Fulbright and David C. Murray Park.

Fund Code	Source	Phase	FY2015	FY2016	FY2017	FY2018	Total
FHWA (TAP)	Federal	ENG	\$0	\$14,400	\$0	\$0	\$14,400
LOCAL	Local	ENG	\$0	\$3,600	\$0	\$0	\$3,600
FHWA (TAP)	Federal	CON	\$0	\$178,280	\$0	\$0	\$178,280
LOCAL	Local	CON	\$0	\$44,570	\$0	\$0	\$44,570
Totals			\$0	\$240,850	\$0	\$0	\$240,850

Notes

Source of Local Funding: Greene County, Springfield-Greene County Park Board, Ozark Greenways.

Prior Cost	\$0
Future Cost	\$0
Total Cost	\$240,850



Transportation Improvement Program - FY 2017-2020

Project Detail by Section and Project Number with Map

J) Pending Amendment Section

TIP # EN1507-17A1 **SOUTH DRY SAC TRAIL CONNECTIONS**

Route South Dry Sac Trail
From Fulbright
To David C. Murray Park
Location/Agency Greene County
Federal Agency FHWA
Responsible Agency Springfield-Greene County Parks
Federal Funding Category TAP
MoDOT Funding Category N/A
AC Year of Conv.
STIP # 5901806



Project Description

Missing connections on South Dry Sac Trail between Fulbright and David C. Murray Park.

Fund Code	Source	Phase	FY2017	FY2018	FY2019	FY2020	Total
FHWA (TAP)	Federal	ENG	\$14,400	\$0	\$0	\$0	\$14,400
LOCAL	Local	ENG	\$3,600	\$0	\$0	\$0	\$3,600
FHWA (TAP)	Federal	CON	\$178,280	\$0	\$0	\$0	\$178,280
LOCAL	Local	CON	\$44,570	\$0	\$0	\$0	\$44,570
Totals			\$240,850	\$0	\$0	\$0	\$240,850

Notes

Source of Local Funding: Greene County, Springfield-Greene County Park Board, Ozark Greenways.

Prior Cost	\$0
Future Cost	\$0
Total Cost	\$240,850



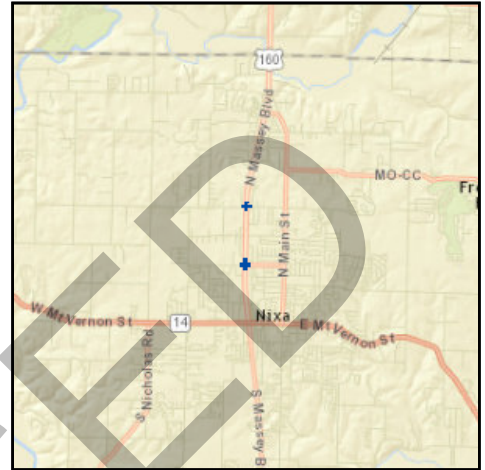
Transportation Improvement Program - FY 2017-2020

Project Detail by Section and Project Number with Map

J) Pending Amendment Section

TIP # NX1801-17A1 160/TRACKER AND 160/NORTHVIEW INTERSECTIONS

Route 160
From at Tracker Road
To at Northview Road
Location/Agency City of Nixa
Federal Agency FHWA
Responsible Agency MoDOT
Federal Funding Category NHPP(NHS)
MoDOT Funding Category Major Projects and Emerging Needs
AC Year of Conv.
STIP # 8P3088B



Project Description

Scoping for intersection improvements on Massey Boulevard at Tracker Road and Northview Road in Nixa.

Fund Code	Source	Phase	FY2017	FY2018	FY2019	FY2020	Total
MoDOT	State	ENG	\$5,000	\$0	\$0	\$0	\$5,000
Totals			\$5,000	\$0	\$0	\$0	\$5,000

Notes

Source of Non-Federal Funds: State Transportation Revenues and City of Nixa Cost Share

Prior Cost	\$0
Future Cost	\$0
Total Cost	\$5,000



Transportation Improvement Program - FY 2017-2020

Project Detail by Section and Project Number with Map

D) Bicycle & Pedestrian Section

TIP # OK1401 **INTERSECTION IMPROVEMENTS AT JACKSON AND NN**

Route Rte. 14 (Jackson)

From Rte. 14

To at Rte. NN

Location/Agency City of Ozark

Federal Agency FHWA

Responsible Agency MoDOT

Federal Funding Category STP

MoDOT Funding Category Major Projects and Emerging Needs

AC Year of Conv. FY 2017, FY 2018, FY 2019

STIP # 8P3015



Project Description

Scoping for intersection improvements at Jackson Street and Rte. NN in Ozark.

Fund Code	Source	Phase	FY2017	FY2018	FY2019	FY2020	Total
MoDOT	State	ENG	\$400	\$400	\$0	\$0	\$800
MoDOT-AC	State	ENG	\$1,600	\$1,600	\$0	\$0	\$3,200
Totals			\$2,000	\$2,000	\$0	\$0	\$4,000

Notes

Non-Federal Funding Source: State Transportation Revenues

Prior Cost	\$16,000
Future Cost	\$0
Total Cost	\$20,000



Transportation Improvement Program - FY 2017-2020

Project Detail by Section and Project Number with Map

J) Pending Amendment Section

TIP # OK1401-17A1 **INTERSECTION IMPROVEMENTS AT JACKSON AND NN**

Route Rte. 14 (Jackson)

From Rte. 14

To at Rte. NN

Location/Agency City of Ozark

Federal Agency FHWA

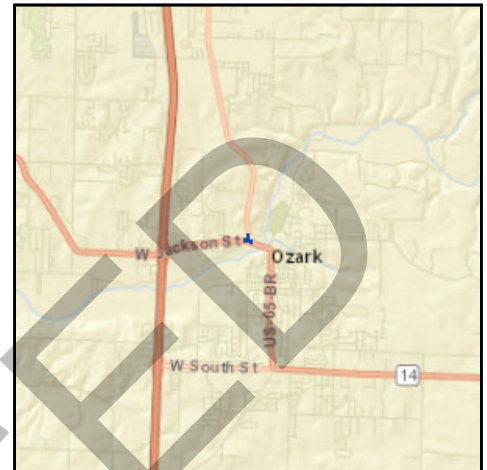
Responsible Agency MoDOT

Federal Funding Category STP

MoDOT Funding Category Major Projects and Emerging Needs

AC Year of Conv. FY 2017, FY 2018, FY 2019

STIP # 8P3015



Project Description

Scoping for intersection improvements at Jackson Street and Rte. NN in Ozark.

Fund Code	Source	Phase	FY2017	FY2018	FY2019	FY2020	Total
FHWA (STBG-U)	Federal	ENG	\$240,000	\$0	\$0	\$0	\$240,000
LOCAL	Local	ENG	\$60,000	\$0	\$0	\$0	\$60,000
MoDOT	State	ENG	\$2,000	\$2,000	\$0	\$0	\$4,000
FHWA (STBG-U)	Federal	ROW	\$280,000	\$0	\$0	\$0	\$280,000
LOCAL	Local	ROW	\$70,000	\$0	\$0	\$0	\$70,000
Totals			\$652,000	\$2,000	\$0	\$0	\$654,000

Notes

Non-Federal Funding Source: State Transportation Revenues and City of Ozark
Local Funding

Prior Cost	\$16,000
Future Cost	\$0
Total Cost	\$670,000

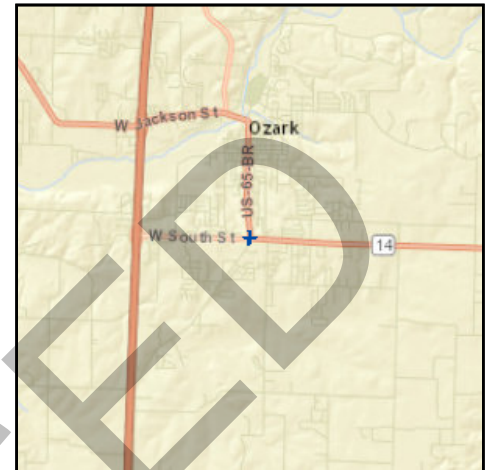


Transportation Improvement Program - FY 2017-2020

Project Detail by Section and Project Number with Map

J) Pending Amendment Section

TIP # OK1801-17A1 **SOUTH AND THIRD IN OZARK**
Route 14
From Bus. 65
To Rte. 14
Location/Agency City of Ozark
Federal Agency FHWA
Responsible Agency MoDOT
Federal Funding Category STP
MoDOT Funding Category Major Projects and Emerging Needs
AC Year of Conv.
STIP # 8P3088C



Project Description

Scoping for intersection improvements at the South Street (Business Rte. 65) and Third Street (Rte. 14) intersection in Ozark.

Fund Code	Source	Phase	FY2017	FY2018	FY2019	FY2020	Total
MoDOT	State	ENG	\$5,000	\$0	\$0	\$0	\$5,000
Totals			\$5,000	\$0	\$0	\$0	\$5,000

Notes

Source of Non-Federal Funding: State Transportation Revenues and City of Ozark Cost Share

Prior Cost	\$0
Future Cost	\$0
Total Cost	\$5,000



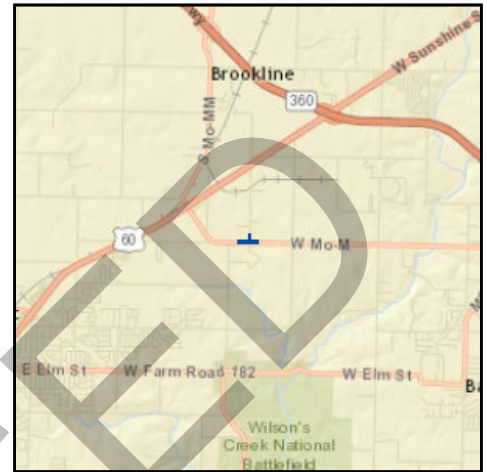
Transportation Improvement Program - FY 2017-2020

Project Detail by Section and Project Number with Map

J) Pending Amendment Section

TIP # RP1801-17A1 REPUBLIC ROAD AND REPMO DRIVE/FR103 INTERSECTION

Route M
From Route M
To FR 103/Repmo Drive
Location/Agency City of Republic
Federal Agency FHWA
Responsible Agency MoDOT
Federal Funding Category Safety
MoDOT Funding Category Major Projects and Emerging Needs
AC Year of Conv.
STIP # 8P3088D



Project Description

Scoping for a roundabout on Republic Road (Rte. M) and Farm Road 103/Repmo Drive in Republic.

Fund Code	Source	Phase	FY2017	FY2018	FY2019	FY2020	Total
MoDOT	State	ENG	\$5,000	\$0	\$0	\$0	\$5,000
Totals			\$5,000	\$0	\$0	\$0	\$5,000

Notes

Source of Non-Federal Funds: State Transportation Revenues, City of Republic, and Republic R-3 School District Cost Share

Prior Cost	\$0
Future Cost	\$0
Total Cost	\$5,000



Transportation Improvement Program - FY 2017-2020

Project Detail by Section and Project Number with Map

J) Pending Amendment Section

TIP # ST1801-17A1 **I-44 AND ROUTE 125 IMPROVEMENTS**

Route 125

From I-44

To I-44

Location/Agency City of Strafford

Federal Agency FHWA

Responsible Agency MoDOT

Federal Funding Category STP

MoDOT Funding Category Major Projects and Emerging Needs

AC Year of Conv.

STIP # 8P3088E



Project Description

Scoping for I-44 interchange ramp intersection improvements at Rte. 125 in Strafford.

Fund Code	Source	Phase	FY2017	FY2018	FY2019	FY2020	Total
MoDOT	State	ENG	\$5,000	\$0	\$0	\$0	\$5,000
Totals			\$5,000	\$0	\$0	\$0	\$5,000

Notes

Source of Non-Federal Funding: State Transportation Revenue and City of Strafford Cost Share

Prior Cost	\$0
Future Cost	\$0
Total Cost	\$5,000



Transportation Improvement Program - FY 2017-2020

Project Detail by Section and Project Number with Map

J) Pending Amendment Section

TIP # WI1701-17A1 **MILLER ROAD WIDENING**

Route Miller

From Farm Road 84

To Kime/Highway O

Location/Agency City of Willard

Federal Agency FHWA

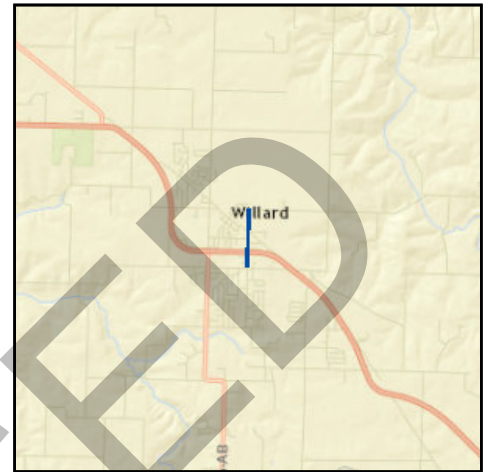
Responsible Agency City of Willard

Federal Funding Category STBG-U

MoDOT Funding Category N/A

AC Year of Conv.

STIP #



Project Description

Widening Miller Road from Jackson St. to US160. Add alternates include widening from US160 to Farm Road 84 and from Highway O (Kime) to Jackson St.

Fund Code	Source	Phase	FY2017	FY2018	FY2019	FY2020	Total
FHWA (STBG-U)	Federal	ENG	\$76,000	\$120,000	\$0	\$0	\$196,000
LOCAL	Local	ENG	\$19,000	\$30,000	\$0	\$0	\$49,000
FHWA (STBG-U)	Federal	UTIL	\$0	\$100,000	\$0	\$0	\$100,000
LOCAL	Local	UTIL	\$0	\$25,000	\$0	\$0	\$25,000
FHWA (STBG-U)	Federal	ROW	\$0	\$40,000	\$0	\$0	\$40,000
LOCAL	Local	ROW	\$0	\$10,000	\$0	\$0	\$10,000
FHWA (STBG-U)	Federal	CON	\$0	\$613,896	\$0	\$0	\$613,896
LOCAL	Local	CON	\$0	\$491,104	\$0	\$0	\$491,104
Totals			\$95,000	\$1,430,000	\$0	\$0	\$1,525,000

Notes

Source of Non-Federal Funds: City of Willard Revenue

Prior Cost	\$0
Future Cost	\$0
Total Cost	\$1,525,000



Transportation Improvement Program - FY 2017-2020

Project Detail by Section and Project Number with Map

J) Pending Amendment Section

TIP # CU1711-17A1 PURCHASE FIXED ROUTE BUSES

Route

From N/A

To N/A

Location/Agency City Utilities

Federal Agency FTA

Responsible Agency City Utilities

Federal Funding Category 5339

MoDOT Funding Category N/A

AC Year of Conv.

STIP #



Project Description

Capital replacement of eleven, new 35-foot low-floor fixed route buses. Project also includes make-ready costs and training/workforce development activities associated with the replacement buses.

Fund Code	Source	Phase	FY2017	FY2018	FY2019	FY2020	Total
FTA (5339)	Federal	CAPITAL	\$3,870,960	\$0	\$0	\$0	\$3,870,960
LOCAL	Local	CAPITAL	\$967,740	\$0	\$0	\$0	\$967,740
Totals			\$4,838,700	\$0	\$0	\$0	\$4,838,700

Notes

Source of Federal Funds: FTA Section 5339 Discretionary Funding
Source of Non-Federal Funds: CU Farebox, Advertising, and Ratepayers

Prior Cost	\$0
Future Cost	\$0
Total Cost	\$4,838,700



Transportation Improvement Program - FY 2017-2020

Project Detail by Section and Project Number with Map

F) Transit Section

TIP # MO1726 5310-COUNCIL OF CHURCHES
Route
From
To
Location/Agency Area Wide
Federal Agency FTA
Responsible Agency MoDOT-Council of Churches
Federal Funding Category 5310
MoDOT Funding Category N/A
AC Year of Conv.
STIP #



Project Description

Wide Body "FF" Light Duty Cutaway Van for Eldercare Transit Service

Fund Code	Source	Phase	FY2017	FY2018	FY2019	FY2020	Total
FTA (5310)	Federal	CAPITAL	\$52,000	\$0	\$0	\$0	\$52,000
LOCAL	Local	CAPITAL	\$13,000	\$0	\$0	\$0	\$13,000
Totals			\$65,000	\$0	\$0	\$0	\$65,000

Notes

Source of Federal Funds: Traditional FTA Section 5310 Funding
Source of Non-Federal Funds: Council of Churches

FYI: Administered by MoDOT

Prior Cost	\$0
Future Cost	\$0
Total Cost	\$65,000



Transportation Improvement Program - FY 2017-2020

Project Detail by Section and Project Number with Map

J) Pending Amendment Section

TIP # MO1726-17A1 5310-COUNCIL OF CHURCHES

Route

From

To

Location/Agency Area Wide

Federal Agency FTA

Responsible Agency MoDOT-Council of Churches

Federal Funding Category 5310

MoDOT Funding Category N/A

AC Year of Conv.

STIP #



Project Description

Two (2) Wide Body "FF" Light Duty Cutaway Vans for Eldercare Transit Service

Fund Code	Source	Phase	FY2017	FY2018	FY2019	FY2020	Total
FTA (5310)	Federal	CAPITAL	\$104,000	\$0	\$0	\$0	\$104,000
LOCAL	Local	CAPITAL	\$26,000	\$0	\$0	\$0	\$26,000
Totals			\$130,000	\$0	\$0	\$0	\$130,000

Notes

Source of Federal Funds: Traditional FTA Section 5310 Funding

Source of Non-Federal Funds: Council of Churches

FYI: Administered by MoDOT

Prior Cost	\$0
Future Cost	\$0
Total Cost	\$130,000

FINANCIAL SUMMARY

Bicycle & Pedestrian

YEARLY SUMMARY

	Federal				Local	State		
PROJECT	FHWA (STBG-U)	FHWA (STP)	FHWA (TAP)	FHWA (STAP)	LOCAL	MoDOT	MoDOT-AC	TOTAL
FY 2017								
EN1503-17A1	\$0	\$0	\$104,525	\$0	\$26,132	\$0	0	\$130,657
EN1504-17A1	\$0	\$0	\$120,066	\$0	\$30,017	\$0	0	\$150,083
EN1505-17A1	\$0	\$0	\$29,219	\$0	\$7,305	\$0	0	\$36,524
EN1506	\$0	\$0	\$205,465	\$0	\$130,042	\$0	\$0	\$335,507
EN1507-17A1	\$0	\$0	\$192,680	\$0	\$48,170	\$0	0	\$240,850
EN1508	\$0	\$0	\$250,000	\$0	\$179,000	\$0	\$0	\$429,000
EN1513	\$500,480	\$0	\$0	\$0	\$125,119	\$0	\$0	\$625,599
EN1701	\$0	\$237,600	\$0	\$128,000	\$0	\$91,400	\$0	\$457,000
EN1702	\$0	\$343,200	\$0	\$212,000	\$0	\$138,800	\$0	\$694,000
EN1703	\$0	\$65,000	\$0	\$155,000	\$0	\$55,000	\$0	\$275,000
EN1704	\$0	\$18,400	\$0	\$0	\$0	\$4,600	\$0	\$23,000
EN1705	\$0	\$1,600	\$0	\$0	\$0	\$400	\$0	\$2,000
EN1706	\$0	\$8,000	\$0	\$0	\$0	\$2,000	\$0	\$10,000
MO1309	\$0	\$0	\$0	\$0	\$0	\$5,000	\$20,000	\$25,000
SUBTOTAL	\$500,480	\$673,800	\$648,145	\$495,000	\$482,331	\$297,200	\$20,000	\$3,434,220
FY 2018								
EN1704	\$0	\$21,400	\$0	\$77,000	\$0	\$24,600	\$0	\$123,000
EN1705	\$0	\$73,200	\$0	\$0	\$0	\$17,800	\$0	\$91,000
EN1706	\$0	\$8,800	\$0	\$0	\$0	\$2,200	\$0	\$11,000
MO1309	\$0	\$0	\$0	\$0	\$0	\$5,000	\$20,000	\$25,000
SUBTOTAL	\$0	\$103,400	\$0	\$77,000	\$0	\$49,600	\$20,000	\$250,000
FY 2019								
EN1705	\$0	\$116,800	\$0	\$300,000	\$0	\$104,200	\$0	\$521,000
EN1706	\$0	\$8,800	\$0	\$0	\$0	\$2,200	\$0	\$11,000
SUBTOTAL	\$0	\$125,600	\$0	\$300,000	\$0	\$106,400	\$0	\$532,000
FY 2020								
EN1706	\$0	\$8,000	\$0	\$0	\$0	\$2,000	\$0	\$10,000
SUBTOTAL	\$0	\$8,000	\$0	\$0	\$0	\$2,000	\$0	\$10,000
GRAND TOTAL								
	\$500,480	\$910,800	\$648,145	\$872,000	\$482,331	\$455,200	\$40,000	\$4,226,220

FINANCIAL CONSTRAINT

Bicycle & Pedestrian

					Local	MoDOT	MoDOT-AC	TOTAL
	STBG-U	STP	TAP	STAP				
PRIOR YEAR								
Balance			\$ 268,901					\$ 268,901
FY 2017								
Funds Anticipated	\$ 500,480	\$ 673,800	\$ 405,085	\$ 495,000	\$ 482,331	\$ 297,200	\$ 20,000	\$ 2,373,416
Funds Programmed	\$ (500,480)	\$ (673,800)	\$ (648,145)	\$ (495,000)	\$ (482,331)	\$ (297,200)	\$ (20,000)	\$ (2,616,476)
Running Balance	\$ -	\$ -	\$ 25,841	\$ -	\$ -	\$ -	\$ -	\$ 25,841
FY 2018								
Funds Anticipated	\$ -	\$ 103,400	\$ 413,187	\$ 77,000	\$ -	\$ 49,600	\$ 20,000	\$ 663,187
Funds Programmed	\$ -	\$ (103,400)	\$ -	\$ (77,000)	\$ -	\$ (49,600)	\$ (20,000)	\$ (250,000)
Running Balance	\$ -	\$ -	\$ 439,028	\$ -	\$ -	\$ -	\$ -	\$ 439,028
FY 2019								
Funds Anticipated	\$ -	\$ 103,400	\$ 421,450	\$ 77,000	\$ -	\$ 49,600	\$ 20,000	\$ 671,450
Funds Programmed	\$ -	\$ (103,400)	\$ -	\$ (77,000)	\$ -	\$ (49,600)	\$ (20,000)	\$ (250,000)
Running Balance	\$ -	\$ -	\$ 860,478	\$ -	\$ -	\$ -	\$ -	\$ 860,478
FY 2020								
Funds Anticipated	\$ -	\$ 8,000	\$ 429,879	\$ -	\$ -	\$ 2,000	\$ -	\$ 439,879
Funds Programmed	\$ -	\$ (8,000)	\$ -	\$ -	\$ -	\$ (2,000)	\$ -	\$ (10,000)
Running Balance	\$ -	\$ -	\$ 1,290,357	\$ -	\$ -	\$ -	\$ -	\$ 1,290,357

FINANCIAL SUMMARY

Roadways

YEARLY SUMMARY

PROJECT	Federal										Local	Other	State			TOTAL	
	FHWA (STBG-U)	FHWA (SAFETY)	FHWA (STP)	FHWA (UM)	FHWA (130)	FHWA (NHS)	FHWA (BRM)	FHWA (BRO)	FHWA (NHPP)	FHWA (HPP)	LOCAL	OTHER	MoDOT	MoDOT-GCSA	MoDOT-AC		
2017																	
CC0901	\$0	\$0	\$1,600	\$0	\$0	\$0	\$0	\$0	\$0	\$0	\$0	\$0	\$400	\$0	\$0	\$2,000	
CC1102	\$0	\$0	\$0	\$0	\$0	\$0	\$0	\$0	\$1,600	\$0	\$0	\$0	\$220,000	\$0	\$0	\$2,000	
CC1601	\$0	\$900	\$0	\$0	\$0	\$0	\$0	\$0	\$0	\$0	\$0	\$0	\$100	\$0	\$0	\$1,000	
CC1701	\$0	\$0	\$1,600	\$0	\$0	\$0	\$0	\$0	\$0	\$0	\$0	\$0	\$400	\$0	\$0	\$2,000	
CC1702	\$0	\$0	\$4,000	\$0	\$0	\$0	\$0	\$0	\$0	\$0	\$0	\$0	\$1,000	\$0	\$0	\$5,000	
CC1703	\$0	\$0	\$4,000	\$0	\$0	\$0	\$0	\$0	\$0	\$0	\$0	\$0	\$1,000	\$0	\$0	\$5,000	
GR1403	\$0	\$0	\$0	\$0	\$0	\$0	\$0	\$0	\$8,000	\$0	\$0	\$0	\$2,000	\$0	\$0	\$10,000	
GR1501	\$1,679,927	\$0	\$0	\$0	\$0	\$0	\$0	\$0	\$0	\$0	\$419,982	\$0	\$0	\$0	\$0	\$2,099,909	
GR1601	\$0	\$0	\$0	\$0	\$0	\$0	\$0	\$320,000	\$0	\$0	\$80,000	\$0	\$0	\$0	\$0	\$400,000	
GR1602	\$0	\$0	\$0	\$0	\$0	\$0	\$0	\$0	\$342,900	\$0	\$0	\$0	\$38,100	\$0	\$0	\$381,000	
GR1603	\$0	\$51,300	\$0	\$0	\$0	\$0	\$0	\$0	\$0	\$0	\$0	\$0	\$5,700	\$0	\$0	\$57,000	
GR1701	\$0	\$0	\$8,000	\$0	\$0	\$0	\$0	\$0	\$0	\$0	\$0	\$0	\$2,000	\$0	\$0	\$10,000	
GR1702	\$0	\$0	\$4,000	\$0	\$0	\$0	\$0	\$0	\$0	\$0	\$0	\$0	\$91,000	\$0	\$0	\$95,000	
GR1703	\$0	\$0	\$800	\$0	\$0	\$0	\$0	\$0	\$0	\$0	\$0	\$0	\$200	\$0	\$0	\$1,000	
GR1704	\$0	\$0	\$1,600	\$0	\$0	\$0	\$0	\$0	\$0	\$0	\$0	\$0	\$400	\$0	\$0	\$2,000	
GR1705	\$0	\$0	\$800	\$0	\$0	\$0	\$0	\$0	\$0	\$0	\$0	\$0	\$200	\$0	\$0	\$1,000	
GR1706	\$0	\$0	\$1,800	\$0	\$0	\$0	\$0	\$0	\$0	\$0	\$0	\$0	\$200	\$0	\$0	\$2,000	
MO1105	\$0	\$0	\$0	\$0	\$0	\$0	\$0	\$0	\$0	\$0	\$0	\$0	\$284,000	\$0	\$0	\$284,000	
MO1505	\$0	\$0	\$800	\$0	\$0	\$0	\$0	\$0	\$0	\$0	\$0	\$0	\$200	\$0	\$0	\$1,000	
MO1608	\$0	\$35,100	\$0	\$0	\$0	\$0	\$0	\$0	\$0	\$0	\$0	\$0	\$3,900	\$0	\$0	\$39,000	
MO1612	\$0	\$0	\$0	\$0	\$0	\$0	\$0	\$0	\$1,460,800	\$0	\$0	\$0	\$365,200	\$0	\$0	\$1,826,000	
MO1613	\$0	\$0	\$488,600	\$0	\$0	\$0	\$0	\$0	\$0	\$0	\$0	\$0	\$122,400	\$0	\$0	\$612,000	
MO1614	\$0	\$0	\$896,000	\$0	\$0	\$0	\$0	\$0	\$0	\$0	\$0	\$0	\$224,000	\$0	\$0	\$1,120,000	
MO1615	\$0	\$0	\$728,800	\$0	\$0	\$0	\$0	\$0	\$0	\$0	\$0	\$0	\$182,200	\$0	\$0	\$911,000	
MO1616	\$0	\$0	\$0	\$0	\$0	\$0	\$0	\$0	\$201,600	\$0	\$0	\$0	\$50,400	\$0	\$0	\$252,000	
MO1617	\$0	\$3,082,500	\$0	\$0	\$0	\$0	\$0	\$0	\$0	\$0	\$0	\$0	\$342,500	\$0	\$0	\$3,425,000	
MO1618	\$0	\$1,792,800	\$0	\$0	\$0	\$0	\$0	\$0	\$0	\$0	\$0	\$0	\$199,200	\$0	\$0	\$1,992,000	
MO1619	\$0	\$0	\$0	\$0	\$0	\$0	\$0	\$0	\$797,600	\$0	\$0	\$0	\$199,400	\$0	\$0	\$997,000	
MO1701	\$315,000	\$0	\$234,400	\$0	\$0	\$0	\$0	\$0	\$0	\$0	\$78,750	\$0	\$58,600	\$0	\$0	\$686,750	
MO1705	\$0	\$0	\$800	\$0	\$0	\$0	\$0	\$0	\$0	\$0	\$0	\$0	\$200	\$0	\$0	\$1,000	
MO1708	\$0	\$900	\$0	\$0	\$0	\$0	\$0	\$0	\$0	\$0	\$0	\$0	\$100	\$0	\$0	\$1,000	
MO1709	\$0	\$1,800	\$0	\$0	\$0	\$0	\$0	\$0	\$0	\$0	\$0	\$0	\$200	\$0	\$0	\$2,000	
MO1710	\$0	\$0	\$448,000	\$0	\$0	\$0	\$0	\$0	\$0	\$0	\$0	\$0	\$112,000	\$0	\$0	\$560,000	
MO1711	\$0	\$0	\$8,000	\$0	\$0	\$0	\$0	\$0	\$0	\$0	\$0	\$0	\$2,000	\$0	\$0	\$10,000	
MO1712	\$0	\$0	\$0	\$0	\$0	\$0	\$0	\$0	\$1,600	\$0	\$0	\$0	\$400	\$0	\$0	\$2,000	
MO1713	\$0	\$1,800	\$0	\$0	\$0	\$0	\$0	\$0	\$0	\$0	\$0	\$0	\$200	\$0	\$0	\$2,000	
MO1714	\$0	\$0	\$0	\$0	\$0	\$0	\$0	\$0	\$1,600	\$0	\$0	\$0	\$400	\$0	\$0	\$2,000	
MO1715	\$0	\$1,822,700	\$0	\$0	\$0	\$0	\$0	\$0	\$0	\$0	\$0	\$0	\$202,300	\$0	\$0	\$2,025,000	
MO1716	\$0	\$0	\$800	\$0	\$0	\$0	\$0	\$0	\$0	\$0	\$0	\$0	\$200	\$0	\$0	\$1,000	
MO1717	\$0	\$0	\$800	\$0	\$0	\$0	\$0	\$0	\$0	\$0	\$0	\$0	\$200	\$0	\$0	\$1,000	
MO1718	\$0	\$0	\$0	\$0	\$0	\$0	\$0	\$0	\$192,600	\$0	\$0	\$0	\$21,400	\$0	\$0	\$214,000	
MO1719	\$0	\$0	\$0	\$0	\$0	\$0	\$0	\$0	\$38,400	\$0	\$0	\$0	\$9,600	\$0	\$0	\$48,000	
MO1720	\$0	\$0	\$0	\$0	\$0	\$0	\$0	\$0	\$4,000	\$0	\$0	\$0	\$1,000	\$0	\$0	\$5,000	
MO1721	\$0	\$26,100	\$0	\$0	\$0	\$0	\$0	\$0	\$0	\$0	\$0	\$0	\$2,900	\$0	\$0	\$29,000	
MO1722	\$0	\$0	\$0	\$0	\$0	\$0	\$0	\$0	\$16,800	\$0	\$0	\$0	\$4,200	\$0	\$0	\$21,000	
MO1723	\$0	\$0	\$3,200	\$0	\$0	\$0	\$0	\$0	\$0	\$0	\$0	\$0	\$800	\$0	\$0	\$4,000	
NX1701	\$0	\$0	\$0	\$0	\$0	\$0	\$0	\$0	\$40,000	\$0	\$0	\$0	\$10,000	\$0	\$0	\$50,000	
NX1702	\$0	\$0	\$1,277,600	\$0	\$0	\$0	\$0	\$0	\$0	\$0	\$0	\$0	\$319,400	\$0	\$0	\$1,597,000	
NX1703	\$0	\$0	\$1,600	\$0	\$0	\$0	\$0	\$0	\$0	\$0	\$0	\$0	\$400	\$0	\$0	\$2,000	
NX1704	\$0	\$0	\$0	\$0	\$0	\$0	\$0	\$0	\$1,600	\$0	\$0	\$0	\$400	\$0	\$0	\$2,000	
NX1705	\$0	\$0	\$0	\$0	\$0	\$0	\$0	\$0	\$1,600	\$0	\$0	\$0	\$400	\$0	\$0	\$2,000	
NX1801-17A1	\$0	\$0	\$0	\$0	\$0	\$0	\$0	\$0	\$0	\$0	\$0	\$0	\$5,000	\$0	\$0	\$5,000	
OK1401-17A1	\$520,000	\$0	\$0	\$0	\$0	\$0	\$0	\$0	\$0	\$0	\$130,000	\$0	\$0	\$0	\$0	\$652,000	
OK1701	\$0	\$0	\$16,000	\$0	\$0	\$0	\$0	\$0	\$0	\$0	\$0	\$0	\$4,000	\$0	\$0	\$20,000	
OK1702	\$0	\$0	\$360,000	\$0	\$0	\$0	\$0	\$0	\$0	\$0	\$0	\$0	\$90,000	\$0	\$0	\$450,000	
OK1703	\$0	\$0	\$40,000	\$0	\$0	\$0	\$0	\$0	\$0	\$0	\$0	\$0	\$10,000	\$0	\$0	\$50,000	
OK1801-17A1	\$0	\$0	\$0	\$0	\$0	\$0	\$0	\$0	\$0	\$0	\$0	\$0	\$5,000	\$0	\$0	\$5,000	
RG0901	\$0	\$0	\$0	\$0	\$0	\$0	\$0	\$0	\$8,000	\$0	\$0	\$0	\$2,000	\$0	\$0	\$10,000	
RG1201	\$0	\$0	\$0	\$0	\$0	\$0	\$0	\$0	\$800	\$0	\$0	\$0	\$200	\$0	\$0	\$1,000	
RP1502	\$1,702,503	\$0	\$0	\$0	\$0	\$0	\$0	\$0	\$0	\$0	\$496,128	\$0	\$0	\$0	\$0	\$2,198,631	
RP1701	\$0	\$0	\$0	\$0	\$0	\$0	\$0	\$0	\$8,000	\$0	\$0	\$0	\$2,000	\$0	\$0	\$10,000	
RP1702	\$0	\$0	\$800	\$0	\$0	\$0	\$0	\$0	\$0	\$0	\$0	\$0	\$200	\$0	\$0	\$1,000	
RP1801-17A1	\$0	\$0	\$0	\$0	\$0	\$0	\$0	\$0	\$0	\$0	\$0	\$0	\$5,000	\$0	\$0	\$5,000	
SP1106	\$706,330	\$0	\$1,073,600	\$0	\$0	\$0	\$0	\$0	\$0	\$0	\$572,670	\$0	\$268,400	\$0	\$0	\$2,621,000	
SP1109	\$391,612	\$0	\$0	\$0	\$2,250,000	\$0	\$0	\$3,017,698	\$0	\$0	\$0	\$343,000	\$754,424	\$750,000	\$0	\$0	\$7,506,734
SP1112	\$0	\$0	\$0	\$0	\$0	\$0	\$0	\$133,600	\$0	\$0	\$0	\$0	\$33,400	\$0	\$0	\$167,000	
SP1122	\$0	\$0	\$115,000	\$0	\$0	\$0	\$0	\$0	\$0	\$0	\$0	\$0	\$0	\$0	\$0	\$115,000	
SP1204	\$0	\$0	\$0	\$0	\$0	\$0	\$0	\$0	\$24,000	\$0	\$0	\$0	\$6,000	\$0	\$0	\$30,000	
SP1209	\$0	\$0	\$0	\$0	\$0	\$0	\$0	\$0	\$0	\$0	\$3,155	\$0	\$0	\$0	\$0	\$3,155	
SP1401	\$0	\$0	\$0	\$0	\$0	\$0	\$0	\$0	\$1,600	\$0	\$0	\$0	\$400	\$0	\$0	\$2,000	
SP1405	\$0	\$0	\$0	\$0	\$0	\$0	\$0	\$0	\$1,600	\$0	\$0	\$0	\$400	\$0	\$0	\$2,000	
SP1415	\$1,089,292	\$0	\$0	\$0	\$0	\$0	\$0	\$1,304,708	\$0	\$0	\$271,823	\$0	\$326,177	\$0	\$0	\$2,992,000	
SP1419	\$0	\$0	\$0	\$9,000	\$0	\$0	\$0	\$0	\$0	\$0	\$0	\$0	\$1,000	\$0	\$0	\$10,000	
SP1602	\$0	\$0	\$0	\$0	\$0	\$0	\$0	\$0	\$5,294,400	\$0	\$0	\$0	\$1,323,600	\$0	\$0	\$6,618,000	
SP1604	\$0	\$57,600	\$0	\$0	\$0	\$0	\$0	\$0	\$0	\$0	\$0	\$0	\$6,400	\$0	\$0	\$64,000	
SP1605	\$0	\$0	\$0	\$0	\$0	\$0	\$982,905	\$0	\$0	\$0	\$267,095	\$0	\$0	\$0	\$0	\$1,250,000	
SP1701	\$0	\$0	\$0	\$0	\$0	\$0	\$0	\$0	\$1,600	\$0	\$0	\$0	\$400	\$0	\$0	\$2,000	
SP1702	\$0	\$0	\$0	\$0	\$0	\$0	\$0	\$0	\$408,800	\$0	\$0	\$0	\$102,200	\$0	\$0	\$511,000	
SP1703	\$0	\$0	\$0	\$0	\$0	\$0	\$0	\$0	\$380,800	\$0	\$0	\$0	\$95,200	\$0	\$0	\$476,000	
SP1704	\$0	\$0	\$0	\$0	\$0	\$0	\$0	\$0	\$1,600	\$0	\$0	\$0	\$400	\$0	\$0	\$2,000	

FY 2017 continued on next page

FINANCIAL SUMMARY

Roadways

YEARLY SUMMARY

PROJECT	Federal										Local	Other	State			TOTAL
	FHWA (STBG-U)	FHWA (SAFETY)	FHWA (STP)	FHWA (UM)	FHWA (130)	FHWA (NHS)	FHWA (BRM)	FHWA (BRO)	FHWA (NHPP)	FHWA (HPP)	LOCAL	OTHER	MoDOT	MoDOT-GCSA	MoDOT-AC	
2017 Continued																
SP1705	\$0	\$0	\$0	\$0	\$0	\$0	\$0	\$0	\$8,000	\$0	\$0	\$0	\$2,000	\$0	\$0	\$10,000
SP1706	\$0	\$0	\$0	\$3,585,600	\$0	\$0	\$0	\$0	\$285,600	\$0	\$0	\$0	\$96,000	\$0	\$0	\$4,839,000
SP1707	\$0	\$0	\$800	\$0	\$0	\$0	\$0	\$0	\$0	\$0	\$0	\$0	\$200	\$0	\$0	\$1,000
SP1708	\$0	\$0	\$0	\$0	\$0	\$0	\$0	\$0	\$1,600	\$0	\$0	\$0	\$400	\$0	\$0	\$2,000
SP1709	\$0	\$0	\$0	\$0	\$0	\$0	\$0	\$0	\$16,000	\$0	\$0	\$0	\$4,000	\$0	\$0	\$20,000
SP1710	\$0	\$0	\$0	\$0	\$0	\$0	\$0	\$0	\$1,600	\$0	\$0	\$0	\$400	\$0	\$0	\$2,000
SP1711	\$0	\$0	\$0	\$0	\$0	\$0	\$0	\$0	\$423,200	\$0	\$0	\$0	\$105,800	\$0	\$0	\$529,000
SP1712	\$0	\$0	\$0	\$0	\$0	\$1,339,200	\$0	\$0	\$0	\$0	\$0	\$0	\$334,800	\$0	\$0	\$1,674,000
SP1713	\$0	\$0	\$0	\$0	\$0	\$0	\$0	\$0	\$0	\$0	\$270,210	\$0	\$0	\$0	\$0	\$270,210
ST1801-17A1	\$0	\$0	\$0	\$0	\$0	\$0	\$0	\$0	\$0	\$0	\$0	\$0	\$5,000	\$0	\$0	\$5,000
WI1301	\$0	\$0	\$800	\$0	\$0	\$0	\$0	\$0	\$0	\$0	\$0	\$0	\$200	\$0	\$0	\$1,000
WI1701-17A1	\$76,000	\$0	\$0	\$0	\$0	\$0	\$0	\$0	\$0	\$0	\$19,000	\$0	\$0	\$0	\$0	\$95,000
SUBTOTAL	\$6,404,664	\$6,873,500	\$5,725,600	\$3,594,600	\$2,250,000	\$1,339,200	\$982,905	\$320,000	\$14,433,906	\$0	\$2,589,813	\$343,000	\$7,328,201	\$750,000	\$0	\$53,030,389
2018																
CC0901	\$0	\$0	\$1,600	\$0	\$0	\$0	\$0	\$0	\$0	\$0	\$0	\$0	\$400	\$0	\$0	\$2,000
CC1102	\$0	\$0	\$0	\$0	\$0	\$0	\$0	\$0	\$1,600	\$0	\$0	\$0	\$400	\$0	\$0	\$2,000
CC1601	\$0	\$900	\$0	\$0	\$0	\$0	\$0	\$0	\$0	\$0	\$0	\$0	\$100	\$0	\$0	\$1,000
CC1701	\$0	\$0	\$417,600	\$0	\$0	\$0	\$0	\$0	\$0	\$0	\$0	\$0	\$104,400	\$0	\$0	\$522,000
CC1702	\$0	\$0	\$660,000	\$0	\$0	\$0	\$0	\$0	\$0	\$0	\$0	\$0	\$165,000	\$0	\$0	\$825,000
CC1703	\$0	\$0	\$4,000	\$0	\$0	\$0	\$0	\$0	\$0	\$0	\$0	\$0	\$1,000	\$0	\$0	\$5,000
GR1403	\$0	\$0	\$0	\$0	\$0	\$0	\$0	\$0	\$8,000	\$0	\$0	\$0	\$2,000	\$0	\$0	\$10,000
GR1701	\$0	\$0	\$8,000	\$0	\$0	\$0	\$0	\$0	\$0	\$0	\$0	\$0	\$2,000	\$0	\$0	\$10,000
GR1703	\$0	\$0	\$1,600	\$0	\$0	\$0	\$0	\$0	\$0	\$0	\$0	\$0	\$400	\$0	\$0	\$2,000
GR1704	\$0	\$0	\$2,400	\$0	\$0	\$0	\$0	\$0	\$0	\$0	\$0	\$0	\$600	\$0	\$0	\$3,000
GR1705	\$0	\$0	\$800	\$0	\$0	\$0	\$0	\$0	\$0	\$0	\$0	\$0	\$200	\$0	\$0	\$1,000
GR1706	\$0	\$0	\$1,800	\$0	\$0	\$0	\$0	\$0	\$0	\$0	\$0	\$0	\$200	\$0	\$0	\$2,000
MO1105	\$0	\$0	\$0	\$0	\$0	\$0	\$0	\$0	\$0	\$0	\$0	\$0	\$284,000	\$0	\$0	\$284,000
MO1505	\$0	\$0	\$617,300	\$0	\$0	\$0	\$0	\$0	\$0	\$0	\$0	\$0	\$154,400	\$0	\$0	\$771,700
MO1616	\$0	\$0	\$0	\$0	\$0	\$0	\$0	\$0	\$2,467,200	\$0	\$0	\$0	\$616,800	\$0	\$0	\$3,084,000
MO1705	\$0	\$0	\$800	\$0	\$0	\$0	\$0	\$0	\$0	\$0	\$0	\$0	\$200	\$0	\$0	\$1,000
MO1708	\$0	\$35,100	\$0	\$0	\$0	\$0	\$0	\$0	\$0	\$0	\$0	\$0	\$3,900	\$0	\$0	\$39,000
MO1709	\$0	\$1,800	\$0	\$0	\$0	\$0	\$0	\$0	\$0	\$0	\$0	\$0	\$200	\$0	\$0	\$2,000
MO1710	\$0	\$0	\$4,305,600	\$0	\$0	\$0	\$0	\$0	\$0	\$0	\$0	\$0	\$1,076,400	\$0	\$0	\$5,382,000
MO1711	\$0	\$0	\$8,000	\$0	\$0	\$0	\$0	\$0	\$0	\$0	\$0	\$0	\$2,000	\$0	\$0	\$10,000
MO1712	\$0	\$0	\$0	\$0	\$0	\$0	\$0	\$0	\$1,600	\$0	\$0	\$0	\$400	\$0	\$0	\$2,000
MO1713	\$0	\$5,328,000	\$0	\$0	\$0	\$0	\$0	\$0	\$0	\$0	\$0	\$0	\$592,000	\$0	\$0	\$5,920,000
MO1714	\$0	\$0	\$0	\$0	\$0	\$0	\$0	\$0	\$1,600	\$0	\$0	\$0	\$400	\$0	\$0	\$2,000
MO1716	\$331,000	\$0	\$235,200	\$0	\$0	\$0	\$0	\$0	\$0	\$0	\$82,750	\$0	\$58,800	\$0	\$0	\$707,750
MO1717	\$0	\$0	\$800	\$0	\$0	\$0	\$0	\$0	\$0	\$0	\$0	\$0	\$200	\$0	\$0	\$1,000
MO1719	\$0	\$0	\$0	\$0	\$0	\$0	\$0	\$0	\$38,400	\$0	\$0	\$0	\$9,600	\$0	\$0	\$48,000
MO1720	\$0	\$0	\$0	\$0	\$0	\$0	\$0	\$0	\$4,000	\$0	\$0	\$0	\$1,000	\$0	\$0	\$5,000
MO1721	\$0	\$27,000	\$0	\$0	\$0	\$0	\$0	\$0	\$0	\$0	\$0	\$0	\$3,000	\$0	\$0	\$30,000
MO1722	\$0	\$0	\$0	\$0	\$0	\$0	\$0	\$0	\$16,800	\$0	\$0	\$0	\$4,200	\$0	\$0	\$21,000
MO1723	\$0	\$0	\$3,200	\$0	\$0	\$0	\$0	\$0	\$0	\$0	\$0	\$0	\$800	\$0	\$0	\$4,000
NX1701	\$0	\$0	\$0	\$0	\$0	\$0	\$0	\$0	\$1,424,000	\$0	\$0	\$0	\$356,000	\$0	\$0	\$1,780,000
NX1702	\$0	\$0	\$4,727,200	\$0	\$0	\$0	\$0	\$0	\$0	\$0	\$0	\$0	\$1,181,800	\$0	\$0	\$5,909,000
NX1703	\$0	\$0	\$235,200	\$0	\$0	\$0	\$0	\$0	\$0	\$0	\$0	\$0	\$58,800	\$0	\$0	\$294,000
NX1704	\$0	\$0	\$0	\$0	\$0	\$0	\$0	\$0	\$1,600	\$0	\$0	\$0	\$400	\$0	\$0	\$2,000
NX1705	\$0	\$0	\$0	\$0	\$0	\$0	\$0	\$0	\$32,000	\$0	\$0	\$0	\$8,000	\$0	\$0	\$40,000
OK1401-17A1	\$0	\$0	\$0	\$0	\$0	\$0	\$0	\$0	\$0	\$0	\$0	\$0	\$2,000	\$0	\$0	\$2,000
OK1701	\$0	\$0	\$201,600	\$0	\$0	\$0	\$0	\$0	\$0	\$0	\$0	\$0	\$50,400	\$0	\$0	\$252,000
OK1702	\$0	\$0	\$4,983,200	\$0	\$0	\$0	\$0	\$0	\$0	\$0	\$0	\$0	\$1,245,800	\$0	\$0	\$6,229,000
OK1703	\$0	\$0	\$340,800	\$0	\$0	\$0	\$0	\$0	\$0	\$0	\$0	\$0	\$85,200	\$0	\$0	\$426,000
RG0901	\$0	\$0	\$0	\$0	\$0	\$0	\$0	\$0	\$8,000	\$0	\$0	\$0	\$2,000	\$0	\$0	\$10,000
RG1201	\$0	\$0	\$0	\$0	\$0	\$0	\$0	\$0	\$800	\$0	\$0	\$0	\$200	\$0	\$0	\$1,000
RP1701	\$0	\$0	\$0	\$0	\$0	\$0	\$0	\$0	\$8,000	\$0	\$0	\$0	\$2,000	\$0	\$0	\$10,000
RP1702	\$0	\$0	\$800	\$0	\$0	\$0	\$0	\$0	\$0	\$0	\$0	\$0	\$200	\$0	\$0	\$1,000
SP1112	\$0	\$0	\$0	\$0	\$0	\$0	\$0	\$0	\$3,127,200	\$166,134	\$0	\$0	\$781,800	\$0	\$0	\$4,075,134
SP1204	\$0	\$0	\$0	\$0	\$0	\$0	\$0	\$0	\$745,600	\$0	\$0	\$0	\$186,400	\$0	\$0	\$932,000
SP1401	\$0	\$0	\$0	\$0	\$0	\$0	\$0	\$0	\$1,600	\$0	\$0	\$0	\$400	\$0	\$0	\$2,000
SP1405	\$0	\$0	\$0	\$0	\$0	\$0	\$0	\$0	\$1,600	\$0	\$0	\$0	\$400	\$0	\$0	\$2,000
SP1419	\$0	\$0	\$0	\$9,000	\$0	\$0	\$0	\$0	\$0	\$0	\$0	\$0	\$1,000	\$0	\$0	\$10,000
SP1701	\$0	\$0	\$0	\$0	\$0	\$0	\$0	\$0	\$315,200	\$0	\$0	\$0	\$78,800	\$0	\$0	\$394,000
SP1702	\$0	\$0	\$0	\$0	\$0	\$0	\$0	\$0	\$2,944,800	\$0	\$0	\$0	\$736,200	\$0	\$0	\$3,681,000
SP1704	\$0	\$0	\$0	\$0	\$0	\$0	\$0	\$0	\$23,200	\$0	\$0	\$0	\$5,800	\$0	\$0	\$29,000
SP1705	\$0	\$0	\$0	\$0	\$0	\$0	\$0	\$0	\$128,000	\$0	\$0	\$0	\$32,000	\$0	\$0	\$160,000
SP1707	\$0	\$0	\$800	\$0	\$0	\$0	\$0	\$0	\$0	\$0	\$0	\$0	\$200	\$0	\$0	\$1,000
SP1708	\$0	\$0	\$0	\$0	\$0	\$0	\$0	\$0	\$1,600	\$0	\$0	\$0	\$400	\$0	\$0	\$2,000
SP1709	\$0	\$0	\$0	\$0	\$0	\$0	\$0	\$0	\$16,000	\$0	\$0	\$0	\$4,000	\$0	\$0	\$20,000
SP1710	\$0	\$0	\$0	\$0	\$0	\$0	\$0	\$0	\$1,600	\$0	\$0	\$0	\$400	\$0	\$0	\$2,000
WI1301	\$0	\$0	\$800	\$0	\$0	\$0	\$0	\$0	\$0	\$0	\$0	\$0	\$200	\$0	\$0	\$1,000
WI1701-17A1	\$873,896	\$0	\$0	\$0	\$0	\$0	\$0	\$0	\$0	\$0	\$56,104	\$0	\$0	\$0	\$0	\$1,430,000
SUBTOTAL	\$1,204,896	\$5,392,800	\$16,759,100	\$9,000	\$0	\$0	\$0	\$0	\$11,320,000	\$166,134	\$638,854	\$0	\$7,905,800	\$0	\$0	\$43,396,584

FINANCIAL SUMMARY

Roadways

YEARLY SUMMARY

PROJECT	Federal										Local	Other	State			TOTAL	
	FHWA (STBG-U)	FHWA (SAFETY)	FHWA (STP)	FHWA (I/M)	FHWA (130)	FHWA (NHS)	FHWA (BRM)	FHWA (BRO)	FHWA (NHPP)	FHWA (HPP)	LOCAL	OTHER	MoDOT	MoDOT-GCSA	MoDOT-AC		
2019																	
CC1601	\$0	\$58,600	\$0	\$0	\$0	\$0	\$0	\$0	\$0	\$0	\$0	\$0	\$0	\$7,400	\$0	\$0	\$66,000
CC1703	\$0	\$0	\$4,000	\$0	\$0	\$0	\$0	\$0	\$0	\$0	\$0	\$0	\$0	\$1,000	\$0	\$0	\$5,000
GR1403	\$0	\$0	\$0	\$0	\$0	\$0	\$0	\$0	\$8,000	\$0	\$0	\$0	\$0	\$2,000	\$0	\$0	\$10,000
GR1701	\$0	\$0	\$80,000	\$0	\$0	\$0	\$0	\$0	\$0	\$0	\$0	\$0	\$0	\$20,000	\$0	\$0	\$100,000
GR1703	\$0	\$0	\$171,200	\$0	\$0	\$0	\$0	\$0	\$0	\$0	\$0	\$0	\$0	\$42,800	\$0	\$0	\$214,000
GR1704	\$0	\$0	\$668,000	\$0	\$0	\$0	\$0	\$0	\$0	\$0	\$0	\$0	\$0	\$167,000	\$0	\$0	\$835,000
GR1705	\$0	\$0	\$275,200	\$0	\$0	\$0	\$0	\$0	\$0	\$0	\$0	\$0	\$0	\$68,800	\$0	\$0	\$344,000
GR1706	\$0	\$0	\$1,800	\$0	\$0	\$0	\$0	\$0	\$0	\$0	\$0	\$0	\$0	\$200	\$0	\$0	\$2,000
MO1105	\$0	\$0	\$0	\$0	\$0	\$0	\$0	\$0	\$0	\$0	\$0	\$0	\$284,000	\$0	\$0	\$284,000	
MO1705	\$0	\$0	\$1,600	\$0	\$0	\$0	\$0	\$0	\$0	\$0	\$0	\$0	\$0	\$400	\$0	\$0	\$2,000
MO1709	\$0	\$36,000	\$0	\$0	\$0	\$0	\$0	\$0	\$0	\$0	\$0	\$0	\$0	\$4,000	\$0	\$0	\$40,000
MO1711	\$0	\$0	\$518,400	\$0	\$0	\$0	\$0	\$0	\$0	\$0	\$0	\$0	\$0	\$129,600	\$0	\$0	\$648,000
MO1712	\$0	\$0	\$0	\$0	\$0	\$0	\$0	\$0	\$59,200	\$0	\$0	\$0	\$0	\$14,800	\$0	\$0	\$74,000
MO1714	\$0	\$0	\$0	\$0	\$0	\$0	\$0	\$0	\$1,600	\$0	\$0	\$0	\$0	\$400	\$0	\$0	\$2,000
MO1717	\$0	\$0	\$235,200	\$0	\$0	\$0	\$0	\$0	\$0	\$0	\$0	\$0	\$0	\$58,800	\$0	\$0	\$294,000
MO1719	\$0	\$0	\$0	\$0	\$0	\$0	\$0	\$0	\$38,400	\$0	\$0	\$0	\$0	\$9,600	\$0	\$0	\$48,000
MO1720	\$0	\$0	\$0	\$0	\$0	\$0	\$0	\$0	\$4,000	\$0	\$0	\$0	\$0	\$1,000	\$0	\$0	\$5,000
MO1721	\$0	\$27,000	\$0	\$0	\$0	\$0	\$0	\$0	\$0	\$0	\$0	\$0	\$0	\$3,000	\$0	\$0	\$30,000
MO1722	\$0	\$0	\$0	\$0	\$0	\$0	\$0	\$0	\$16,800	\$0	\$0	\$0	\$0	\$4,200	\$0	\$0	\$21,000
MO1723	\$0	\$0	\$4,000	\$0	\$0	\$0	\$0	\$0	\$0	\$0	\$0	\$0	\$0	\$1,000	\$0	\$0	\$5,000
NX1701	\$0	\$0	\$0	\$0	\$0	\$0	\$0	\$0	\$5,812,000	\$0	\$0	\$0	\$0	\$1,453,000	\$0	\$0	\$7,265,000
NX1704	\$0	\$0	\$0	\$0	\$0	\$0	\$0	\$0	\$1,600	\$0	\$0	\$0	\$0	\$400	\$0	\$0	\$2,000
NX1705	\$0	\$0	\$0	\$0	\$0	\$0	\$0	\$0	\$3,926,400	\$0	\$0	\$0	\$0	\$981,600	\$0	\$0	\$4,908,000
OK1701	\$0	\$0	\$2,528,800	\$0	\$0	\$0	\$0	\$0	\$0	\$0	\$0	\$0	\$0	\$632,200	\$0	\$0	\$3,161,000
OK1703	\$0	\$0	\$6,104,800	\$0	\$0	\$0	\$0	\$0	\$0	\$0	\$0	\$0	\$0	\$1,526,200	\$0	\$0	\$7,631,000
RG0901	\$0	\$0	\$0	\$0	\$0	\$0	\$0	\$0	\$8,000	\$0	\$0	\$0	\$0	\$2,000	\$0	\$0	\$10,000
RG1201	\$0	\$0	\$0	\$0	\$0	\$0	\$0	\$0	\$800	\$0	\$0	\$0	\$0	\$200	\$0	\$0	\$1,000
RP1701	\$0	\$0	\$0	\$0	\$0	\$0	\$0	\$0	\$8,000	\$0	\$0	\$0	\$0	\$2,000	\$0	\$0	\$10,000
RP1702	\$0	\$0	\$162,400	\$0	\$0	\$0	\$0	\$0	\$0	\$0	\$0	\$0	\$0	\$40,600	\$0	\$0	\$203,000
SP1401	\$0	\$0	\$0	\$0	\$0	\$0	\$0	\$0	\$1,600	\$0	\$0	\$0	\$0	\$400	\$0	\$0	\$2,000
SP1419	\$0	\$0	\$0	\$9,000	\$0	\$0	\$0	\$0	\$0	\$0	\$0	\$0	\$0	\$1,000	\$0	\$0	\$10,000
SP1704	\$0	\$0	\$0	\$0	\$0	\$0	\$0	\$0	\$434,400	\$0	\$0	\$0	\$0	\$108,600	\$0	\$0	\$543,000
SP1705	\$0	\$0	\$0	\$0	\$0	\$0	\$0	\$0	\$8,271,200	\$0	\$0	\$0	\$0	\$2,067,800	\$0	\$0	\$10,339,000
SP1707	\$0	\$0	\$247,200	\$0	\$0	\$0	\$0	\$0	\$0	\$0	\$0	\$0	\$0	\$61,800	\$0	\$0	\$309,000
SP1708	\$0	\$0	\$0	\$0	\$0	\$0	\$0	\$0	\$2,400	\$0	\$0	\$0	\$0	\$600	\$0	\$0	\$3,000
SP1709	\$0	\$0	\$0	\$0	\$0	\$0	\$0	\$0	\$16,000	\$0	\$0	\$0	\$0	\$4,000	\$0	\$0	\$20,000
SP1710	\$0	\$0	\$0	\$0	\$0	\$0	\$0	\$0	\$2,400	\$0	\$0	\$0	\$0	\$600	\$0	\$0	\$3,000
WI1301	\$0	\$0	\$800	\$0	\$0	\$0	\$0	\$0	\$0	\$0	\$0	\$0	\$0	\$200	\$0	\$0	\$1,000
SUBTOTAL	\$0	\$121,600	\$11,003,400	\$9,000	\$0	\$0	\$0	\$0	\$18,612,800	\$0	\$0	\$0	\$0	\$7,703,200	\$0	\$0	\$37,450,000
2020																	
CC1703	\$0	\$0	\$4,000	\$0	\$0	\$0	\$0	\$0	\$0	\$0	\$0	\$0	\$0	\$1,000	\$0	\$0	\$5,000
GR1403	\$0	\$0	\$0	\$0	\$0	\$0	\$0	\$0	\$8,000	\$0	\$0	\$0	\$0	\$2,000	\$0	\$0	\$10,000
GR1502	\$1,120,000	\$0	\$0	\$0	\$0	\$0	\$0	\$0	\$0	\$0	\$280,000	\$0	\$0	\$0	\$0	\$0	\$1,400,000
GR1701	\$0	\$0	\$373,600	\$0	\$0	\$0	\$0	\$0	\$0	\$0	\$0	\$0	\$0	\$93,400	\$0	\$0	\$467,000
GR1706	\$0	\$0	\$18,000	\$0	\$0	\$0	\$0	\$0	\$0	\$0	\$0	\$0	\$0	\$2,000	\$0	\$0	\$20,000
MO1105	\$0	\$0	\$0	\$0	\$0	\$0	\$0	\$0	\$0	\$0	\$0	\$0	\$0	\$284,000	\$0	\$0	\$284,000
MO1705	\$0	\$0	\$163,200	\$0	\$0	\$0	\$0	\$0	\$0	\$0	\$0	\$0	\$0	\$40,800	\$0	\$0	\$204,000
MO1711	\$0	\$0	\$4,468,800	\$0	\$0	\$0	\$0	\$0	\$0	\$0	\$0	\$0	\$0	\$1,117,200	\$0	\$0	\$5,586,000
MO1712	\$0	\$0	\$0	\$0	\$0	\$0	\$0	\$0	\$7,479,200	\$0	\$0	\$0	\$0	\$1,869,800	\$0	\$0	\$9,349,000
MO1714	\$0	\$0	\$0	\$0	\$0	\$0	\$0	\$0	\$33,600	\$0	\$0	\$0	\$0	\$8,400	\$0	\$0	\$42,000
MO1719	\$0	\$0	\$0	\$0	\$0	\$0	\$0	\$0	\$38,400	\$0	\$0	\$0	\$0	\$9,600	\$0	\$0	\$48,000
MO1720	\$0	\$0	\$0	\$0	\$0	\$0	\$0	\$0	\$4,000	\$0	\$0	\$0	\$0	\$1,000	\$0	\$0	\$5,000
MO1721	\$0	\$27,000	\$0	\$0	\$0	\$0	\$0	\$0	\$0	\$0	\$0	\$0	\$0	\$3,000	\$0	\$0	\$30,000
MO1722	\$0	\$0	\$0	\$0	\$0	\$0	\$0	\$0	\$18,400	\$0	\$0	\$0	\$0	\$4,600	\$0	\$0	\$23,000
MO1723	\$0	\$0	\$3,200	\$0	\$0	\$0	\$0	\$0	\$0	\$0	\$0	\$0	\$0	\$800	\$0	\$0	\$4,000
NX1704	\$0	\$0	\$0	\$0	\$0	\$0	\$0	\$0	\$1,600	\$0	\$0	\$0	\$0	\$400	\$0	\$0	\$2,000
RG0901	\$0	\$0	\$0	\$0	\$0	\$0	\$0	\$0	\$8,000	\$0	\$0	\$0	\$0	\$2,000	\$0	\$0	\$10,000
RG1201	\$0	\$0	\$0	\$0	\$0	\$0	\$0	\$0	\$282,400	\$0	\$0	\$0	\$0	\$70,600	\$0	\$0	\$353,000
RP1701	\$0	\$0	\$0	\$0	\$0	\$0	\$0	\$0	\$8,000	\$0	\$0	\$0	\$0	\$2,000	\$0	\$0	\$10,000
SP1401	\$0	\$0	\$0	\$0	\$0	\$0	\$0	\$0	\$7,000	\$0	\$0	\$0	\$0	\$0	\$0	\$0	\$7,000
SP1419	\$0	\$0	\$0	\$9,000	\$0	\$0	\$0	\$0	\$0	\$0	\$0	\$0	\$0	\$1,000	\$0	\$0	\$10,000
SP1708	\$0	\$0	\$0	\$0	\$0	\$0	\$0	\$0	\$838,400	\$0	\$0	\$0	\$0	\$209,600	\$0	\$0	\$1,048,000
SP1709	\$0	\$0	\$0	\$0	\$0	\$0	\$0	\$0	\$16,000	\$0	\$0	\$0	\$0	\$4,000	\$0	\$0	\$20,000
SP1710	\$0	\$0	\$0	\$0	\$0	\$0	\$0	\$0	\$628,800	\$0	\$0	\$0	\$0	\$157,200	\$0	\$0	\$786,000
WI1301	\$0	\$0	\$800	\$0	\$0	\$0	\$0	\$0	\$0	\$0	\$0	\$0	\$0	\$200	\$0	\$0	\$1,000
SUBTOTAL	\$1,120,000	\$27,000	\$5,031,600	\$9,000	\$0	\$0	\$0	\$0	\$9,371,800	\$0	\$280,000	\$0	\$3,884,600	\$0	\$0	\$0	\$19,724,000
GRAND TOTAL	\$8,729,560	\$12,414,900	\$38,519,700	\$3,621,600	\$2,250,000	\$1,339,200	\$982,905	\$320,000	\$53,738,506	\$166,134	\$3,508,667	\$343,000	\$26,821,801	\$750,000	\$0	\$0	\$153,600,973

FINANCIAL CONSTRAINT

Roadways

	Federal Funding Source															
	STBG-U	Safety	STP	I/M	130	NHS	BRM	BRO	NHPP	HPP	TOTAL Federal Funds	Local	MoDOT Programmed Funds	Other	State Operations and Maintenance	TOTAL
2017 Funds Programmed	\$6,404,664	\$6,873,500	\$5,725,600	\$3,594,600	\$2,250,000	\$1,339,200	\$982,905	\$320,000	\$14,433,906	\$0	\$41,924,375	\$2,589,813	\$8,078,201	\$343,000	\$6,648,603	\$59,583,992
2018 Funds Programmed	\$1,204,896	\$5,392,800	\$16,759,100	\$9,000	\$0	\$0	\$0	\$0	\$11,320,000	\$166,134	\$34,851,930	\$638,854	\$7,905,800	\$0	\$6,715,089	\$50,111,673
2019 Funds Programmed	\$0	\$121,600	\$11,003,400	\$9,000	\$0	\$0	\$0	\$0	\$18,612,800	\$0	\$29,746,800	\$0	\$7,703,200	\$0	\$6,782,240	\$44,232,240
2020 Funds Programmed	\$1,120,000	\$27,000	\$5,031,600	\$9,000	\$0	\$0	\$0	\$0	\$9,371,800	\$0	\$15,559,400	\$280,000	\$3,884,600	\$0	\$6,850,063	\$26,574,063
Total	\$ 8,729,560	\$ 12,414,900	\$ 38,519,700	\$ 3,621,600	\$ 2,250,000	\$ 1,339,200	\$ 982,905	\$ 320,000	\$ 53,738,506	\$ 166,134	\$ 122,082,505	\$ 3,508,667	\$ 27,571,801	\$ 343,000	\$ 26,995,995	\$180,501,968

	Prior Year	FY 2017	FY 2018	FY 2019	FY 2020	TOTAL
Available State and Federal Funding	\$0	\$34,680,775	\$35,872,220	\$37,063,664	\$37,075,338	\$144,691,997
Available Operations and Maintenance Funding	\$0	\$6,648,603	\$6,715,089	\$6,762,240	\$6,850,063	\$26,995,995
Available Suballocated Funding	\$17,300,705	\$5,192,459	\$5,806,798	\$5,922,934	\$6,041,392	\$40,264,288
TOTAL AVAILABLE FUNDING	\$17,300,705	\$46,521,837	\$48,394,107	\$49,768,838	\$49,966,793	
Prior Year Funding		\$17,300,705	\$4,238,550	\$2,520,984	\$8,057,582	
Programmed State and Federal Funding		(\$59,583,992)	(\$50,111,673)	(\$44,232,240)	(\$26,574,063)	(\$180,501,968)
TOTAL REMAINING	\$17,300,705	\$4,238,550	\$2,520,984	\$8,057,582	\$31,450,312	\$31,450,312

FINANCIAL SUMMARY

Transit

YEARLY SUMMARY

	Federal			Local	State	
PROJECT	FTA (5307)	FTA (5310)	FTA (5339)	LOCAL	MoDOT	TOTAL
2017						
CU1514	\$0	\$51,880	\$0	\$12,970	\$0	\$64,850
CU1700	\$1,700,000	\$0	\$0	\$1,750,000	\$50,000	\$3,500,000
CU1701	\$447,792	\$0	\$0	\$111,948	\$0	\$559,740
CU1702	\$255,000	\$0	\$0	\$64,826	\$0	\$319,826
CU1704	\$160,000	\$0	\$0	\$40,000	\$0	\$200,000
CU1705	\$25,930	\$0	\$0	\$6,482	\$0	\$32,412
CU1707	\$0	\$206,076	\$0	\$51,519	\$0	\$257,595
CU1709	\$0	\$0	\$416,000	\$73,412	\$0	\$489,412
CU1711-17A1	\$0	\$0	\$3,870,960	\$967,740	\$0	\$4,838,700
MO1506	\$0	\$419,470	\$0	\$104,867	\$0	\$524,337
MO1507	\$0	\$46,608	\$0	\$0	\$0	\$46,608
MO1724	\$0	\$41,643	\$0	\$10,411	\$0	\$52,054
MO1725	\$0	\$26,392	\$0	\$6,598	\$0	\$32,990
MO1726-17A1	\$0	\$104,000	\$0	\$26,000	\$0	\$130,000
MO1727	\$0	\$61,572	\$0	\$15,394	\$0	\$76,966
MO1728	\$0	\$32,383	\$0	\$0	\$0	\$32,383
MO1729	\$0	\$136,783	\$0	\$34,196	\$0	\$170,979
SUBTOTAL	\$2,588,722	\$1,126,807	\$4,286,960	\$3,276,363	\$50,000	\$11,328,852
GRAND TOTAL	\$2,588,722	\$1,126,807	\$4,286,960	\$3,276,363	\$50,000	\$11,328,852

FINANCIAL CONSTRAINT

Transit

	Federal Funding Source			Local	MoDOT	TOTAL
	5307	5310	5339			
FY 2017						
Funds Anticipated	\$ 2,588,722	\$ 1,126,807	\$ 4,286,960	\$ 3,276,363	\$ 50,000	\$11,328,852
Funds Programmed	(\$2,588,722)	(\$1,126,807)	(\$4,286,960)	(\$3,276,363)	(\$50,000)	(\$11,328,852)
Running Balance	\$0	\$0	\$0	\$0	\$0	\$0
FY 2018						
Funds Anticipated	\$ 2,647,478	\$ 273,197	\$ 252,962	\$ 634,727	\$ -	\$3,808,364
Funds Programmed	\$ -	\$ -	\$ -	\$ -	\$ -	\$0
Running Balance	\$2,647,478	\$273,197	\$252,962	\$634,727	\$0	\$3,808,364
FY 2019						
Funds Anticipated	\$ 2,703,605	\$ 278,989	\$ 259,691	\$ 648,457	\$ -	\$3,890,742
Funds Programmed	\$ -	\$ -	\$ -	\$ -	\$ -	\$0
Running Balance	\$2,703,605	\$278,989	\$259,691	\$648,457	\$0	\$7,699,105
FY 2020						
Funds Anticipated	\$2,760,921	\$ 284,903	\$ 266,564	\$ 662,478	\$ -	\$3,974,866
Funds Programmed	\$ -	\$ -	\$ -	\$ -	\$ -	\$0
Running Balance	\$2,760,921	\$284,903	\$266,564	\$662,478	\$0	\$11,673,971