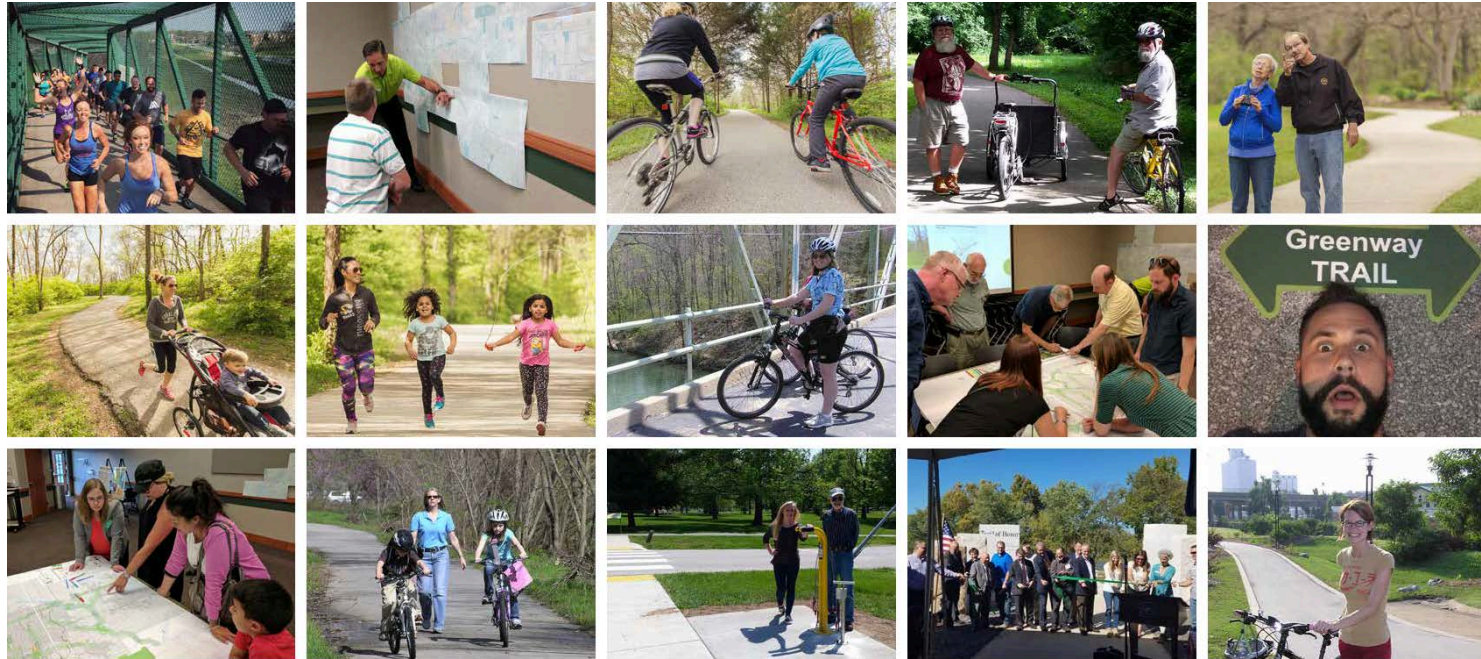


# Nixa Addendum:

## Regional Bicycle and Pedestrian Trail Investment Study

- ▶ Background
- ▶ Unique Features
- ▶ New Alignments
- ▶ Costs



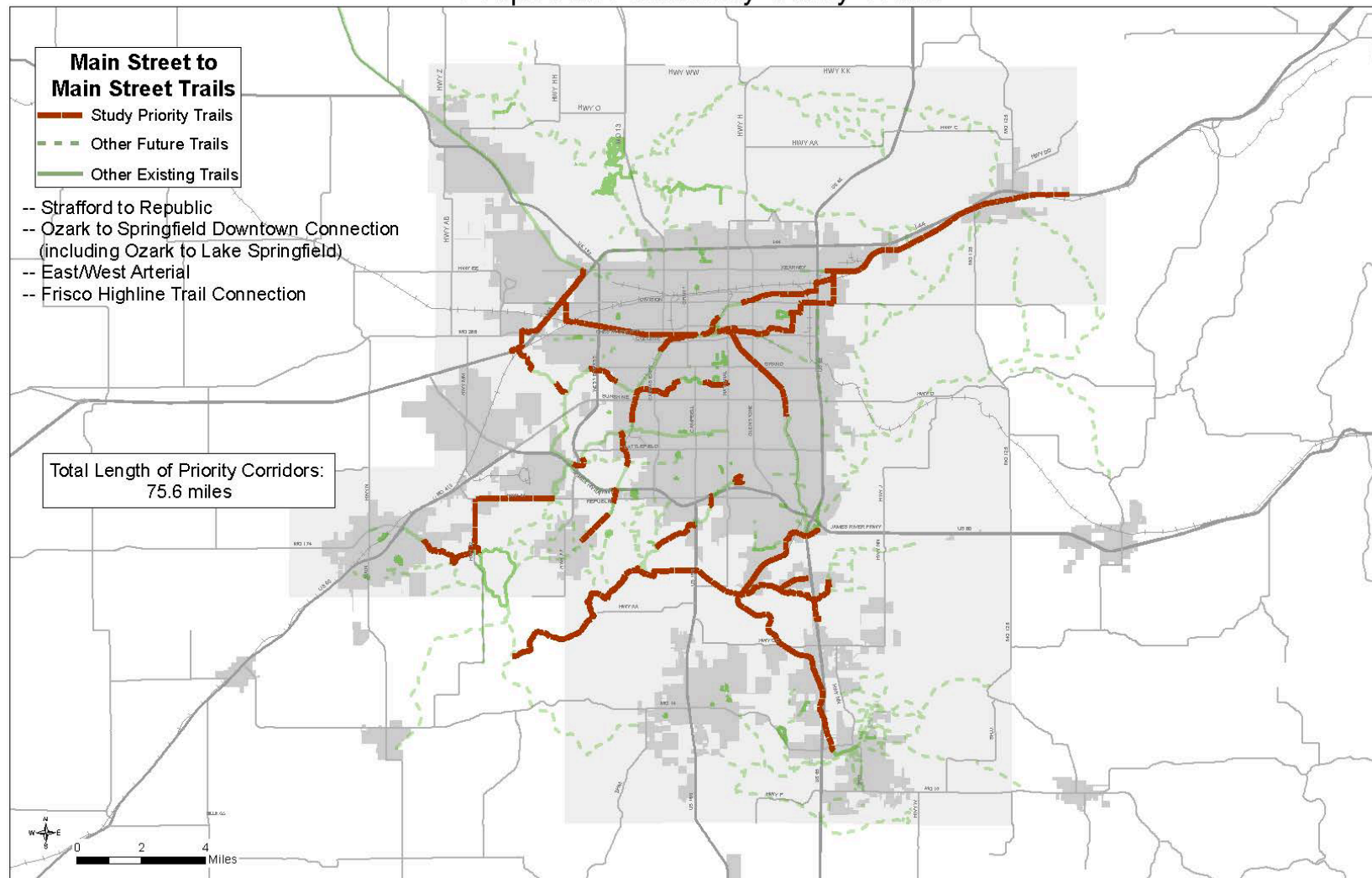
## Ozarks Transportation Organization Bicycle & Pedestrian Trail Investment Study



October, 2017



## Proposed Feasibility Study Trails



# Nixa Addendum

- ▶ Donated Park Land
- ▶ Proposing Not Refining
  - ▶ 2-3 Connections
- ▶ Received Additional Information
  - ▶ Sidewalks
  - ▶ Sidepaths
  - ▶ Local Trails
- ▶ Costs
- ▶ Less Environmental



## NIXA REGIONAL TRAIL ALTERNATIVES

NIXA AREA TRAILS STUDY:  
AN ADDENDUM TO THE  
OTO TRAIL INVESTMENT  
STUDY

### EXISTING FACILITIES

- Sidewalk
- Park/School Trail
- Bike Lane
- Bike Route
- Share the Road
- Shared Lane

### REGIONAL TRAIL CORRIDOR ALTERNATIVES

- NE Chadwick Flyer Connector
- Eoff Trail
- X Center - Finley River Connector Trail
- 1/8-Mile Corridor Buffer

### PROPOSED NIXA TRAILS

- - - Proposed Nixa Trails

### PREVIOUSLY PLANNED FACILITIES

- OTO Other Planned Trail
- OTO Planned Priority Trail

### DESTINATIONS AND BOUNDARIES

- Parks and Open Space
- Schools (K-12)
- Colleges and Universities
- Commercially-Zoned Parcels
- City of Nixa
- Other Municipalities

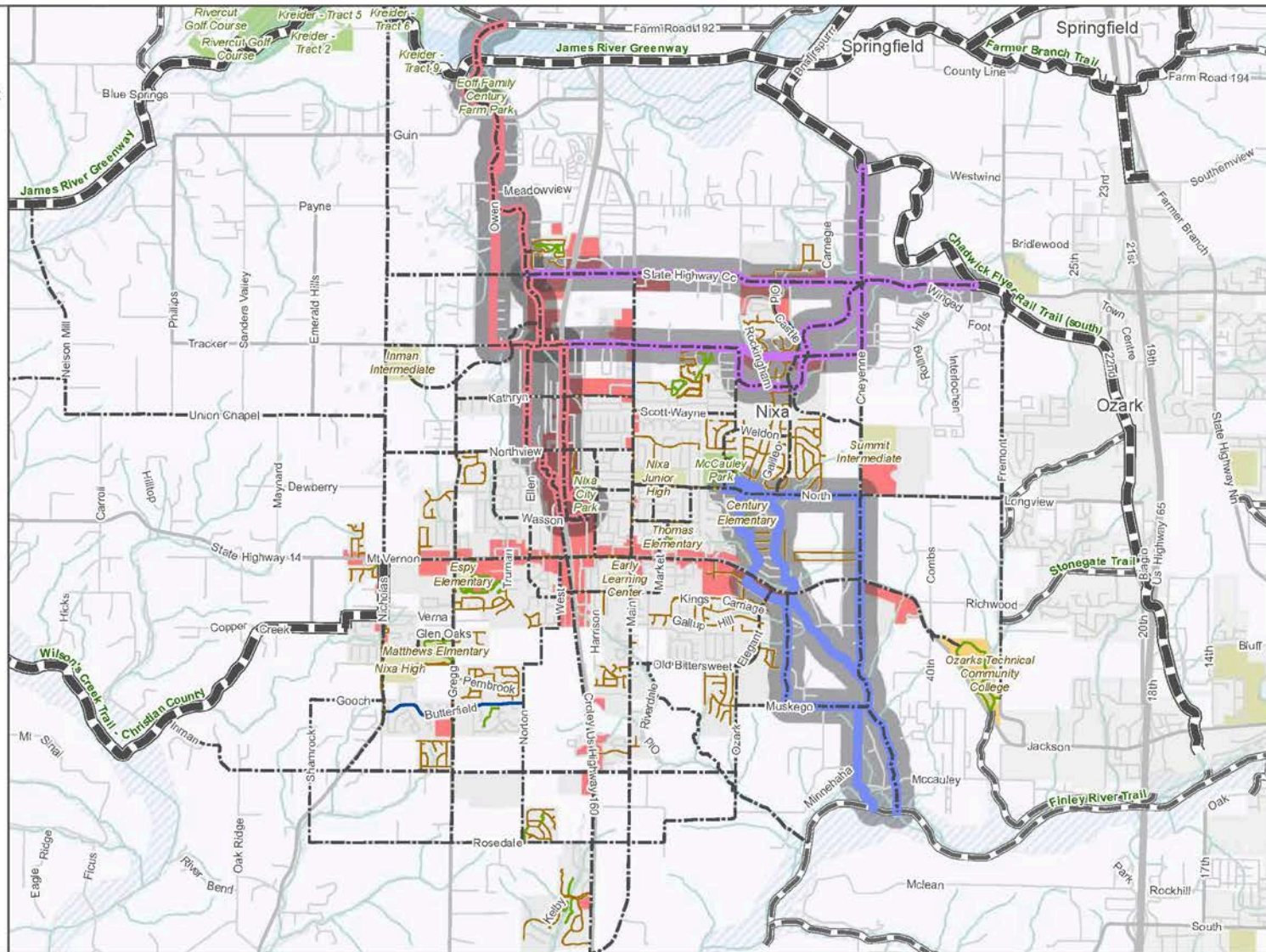
### HYDROLOGY

- Rivers and Streams
- Floodway
- Floodplain (100 YR)

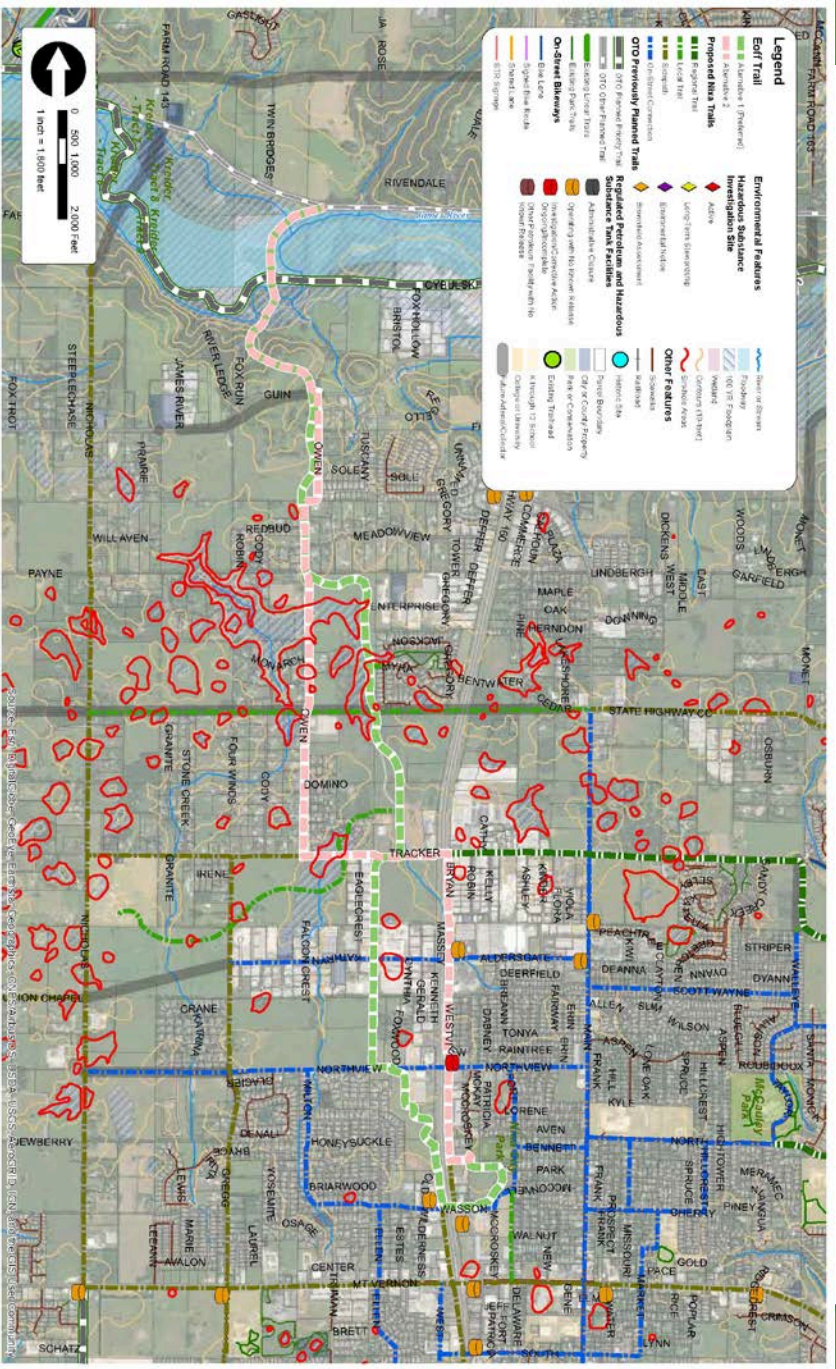
0 0.5 1 MILES



Data provided by the Ozarks  
Transportation Organization,  
City of Nixa  
Map produced May 2018.

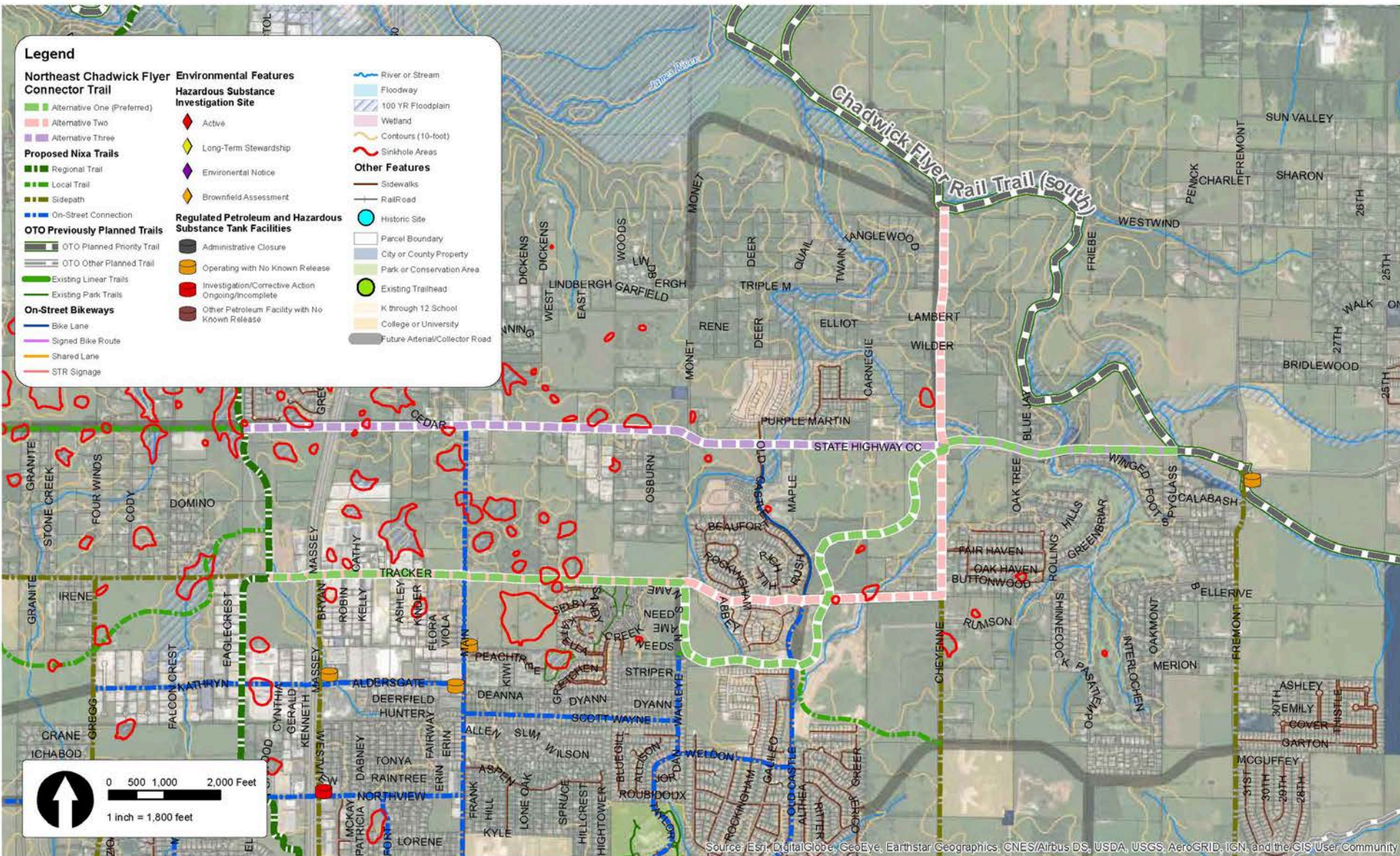






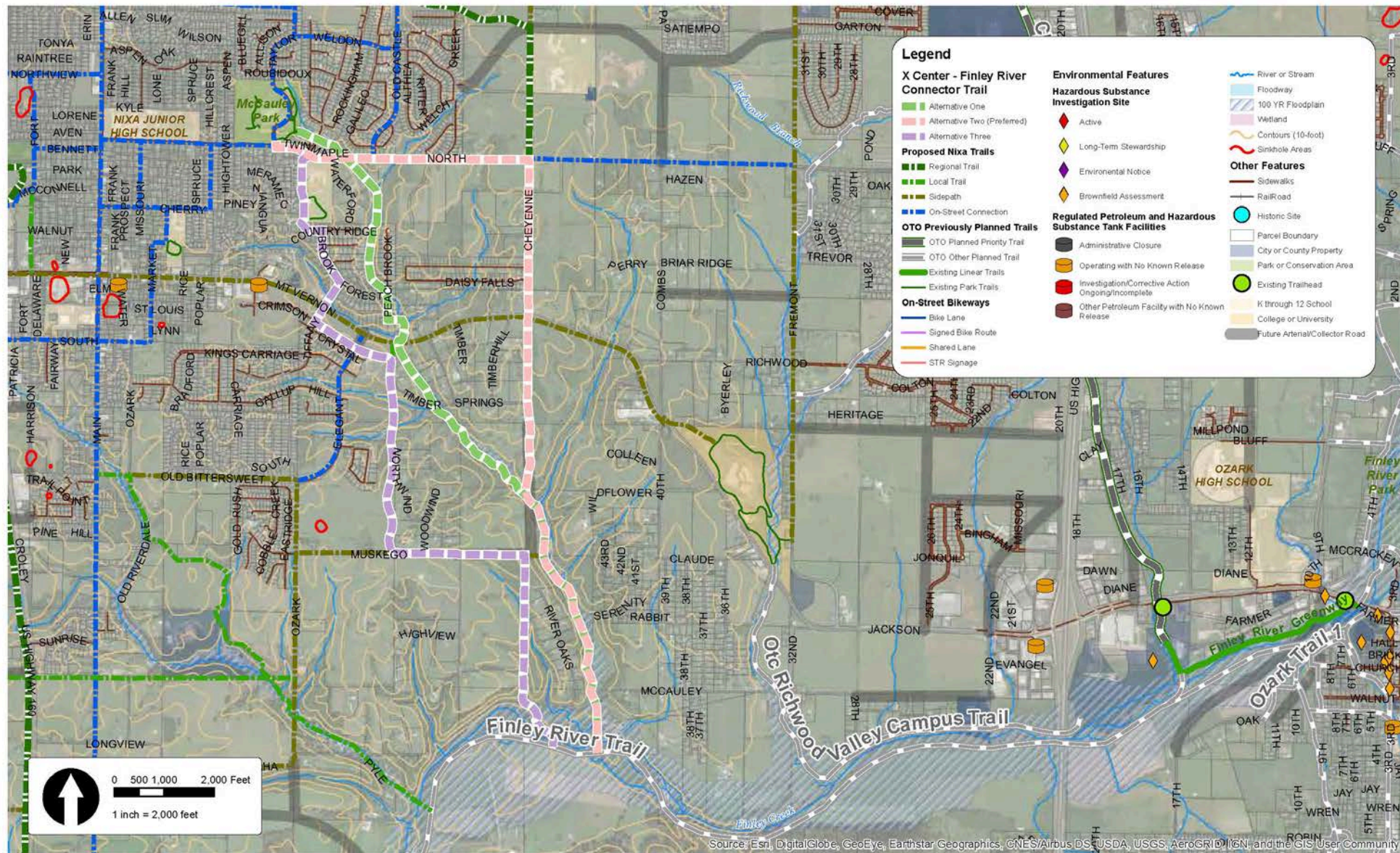
### Map 3: Eoff Trail Corridor Alternatives





Map 4: Northeast Chadwick Flyer Connector Corridor Alternatives





Map 5: X Center - Finley River Greenway Connector Corridor Alternatives



## NIXA REGIONAL TRAIL ALTERNATIVES

NIXA AREA TRAILS STUDY:  
AN ADDENDUM TO THE  
OTO TRAIL INVESTMENT  
STUDY

### EXISTING FACILITIES

- Sidewalk
- Park/School Trail
- Bike Lane
- Bike Route
- Share the Road
- Shared Lane

### REGIONAL TRAIL CORRIDOR ALTERNATIVES

- NE Chadwick Flyer Connector
- Eoff Trail
- X Center - Finley River Connector Trail
- 1/8-Mile Corridor Buffer

### PROPOSED NIXA TRAILS

- - - Proposed Nixa Trails

### PREVIOUSLY PLANNED FACILITIES

- OTO Other Planned Trail
- OTO Planned Priority Trail

### DESTINATIONS AND BOUNDARIES

- Parks and Open Space
- Schools (K-12)
- Colleges and Universities
- Commercially-Zoned Parcels
- City of Nixa
- Other Municipalities

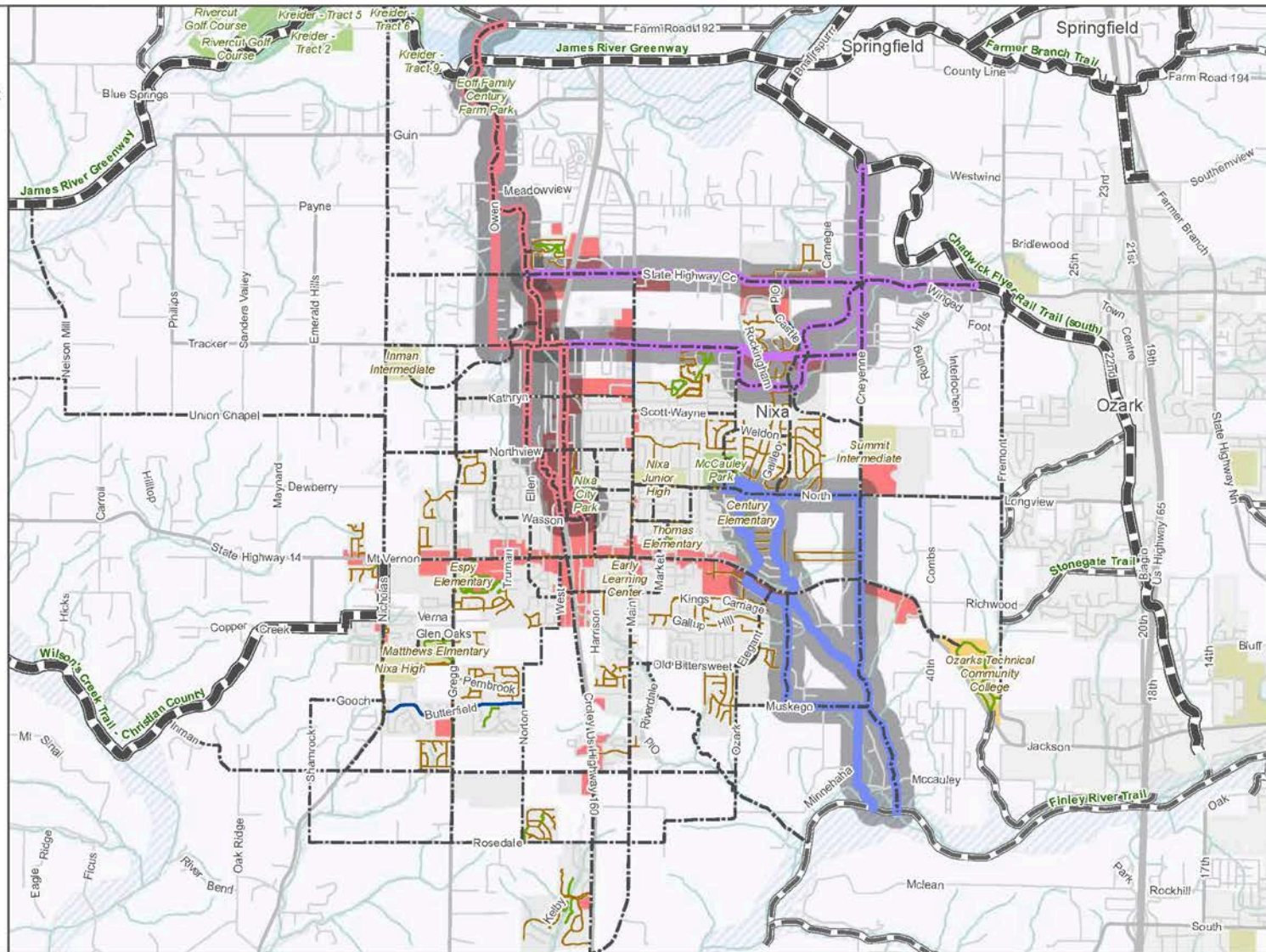
### HYDROLOGY

- Rivers and Streams
- Floodway
- Floodplain (100 YR)

0 0.5 1 MILES



Data provided by the Ozarks  
Transportation Organization,  
City of Nixa  
Map produced May 2018.



# Planning Level Costs

Recommended Facility	Limit From	Limit To	Project Length (Miles)	Planning Level Cost Estimate
Regional Trails				
Eoff Trail	Northview Drive	Future Rivercut Parkway	4.77	\$6,195,843
Finley River Connector Trail	Finley Creek Greenway	McCauley Park	3.32	\$4,317,338
NE Chadwick Flyer Connector	Eoff Trail	Chadwick Flyer Trail at Hwy CC	3.94	\$5,117,925



# Detailed Costs

**Table 9: Eoff Trail Opinion of Probable Cost, 10ft Paved Path with 12ft Bridges**

ITEM	QTY.	UNIT	UNIT COST	COST(\$)
Clearing & Grubbing	3	AC	\$7,500.00	\$22,500.00
Linear Grading Class 1	252	STA	\$3,000.00	\$756,000.00
Compacting Subgrade	28,989	SY	\$2.00	\$57,978.00
4" Aggregate Base	28,989	SY	\$9.00	\$260,901.00
6" Concrete Pavement	27,989	SY	\$85.00	\$2,379,065.00
7" Non-reinforced Concrete (Road Base Pvmf)	225	SY	\$85.00	\$19,125.00
Bituminous Pavement Mix PG64-22 BP-1 (2")	25	TON	\$95.00	\$2,375.00
Tack Coat (0.10 GAL/SY)	225	GAL	\$5.00	\$1,125.00
Driveway Repairs & Reconstruction	325	SY	\$90.00	\$29,250.00
Curb Ramps	450	SY	\$135.00	\$60,750.00
Truncated Domes	360	SF	\$30.00	\$10,800.00
Concrete Curb	360	LF	\$35.00	\$12,600.00
Wayfinding Signage (1 per 0.25 MI of Trail)	20	EA	\$1,000.00	\$20,000.00
Rock Lining (100 CY per bridge abutment)	200	CY	\$85.00	\$17,000.00
24" White Stop Bars	84	LF	\$15.00	\$1,260.00
24" White Yield Markings	36	EA	\$50.00	\$1,800.00
30" White High Visibility Markings	540	LF	\$20.00	\$10,800.00
Trail Signage & Posts (2 signs per 500')	101	EA	\$350.00	\$35,350.00
Roadway Signage & Posts (4 signs per Crossing)	36	EA	\$350.00	\$12,600.00
RRFB	6	EA	\$10,000.00	\$60,000.00
Signal Modification (Pedestrian-Cyclist Upgrades)	1	EA	\$50,000.00	\$50,000.00
Seed, mulch, etc.	10	ACRE	\$5,000.00	\$50,000.00
Temporary Silt Fence	25,190	LF	\$3.00	\$75,570.00
Ditch Checks	252	EA	\$225.00	\$56,677.50
Sediment Removal	504	CY	\$40.00	\$20,160.00
Pedestrian Bridge (12' wide)	1,860	SF	\$300.00	\$558,000.00
Decorative Pedestrian Guardrail	100	LF	\$120.00	\$12,000.00
Contractor Construction Staking (1%)	1	LSUM	\$45,936.79	\$45,936.79
Site Furnishings (1.5%)	1	LSUM	\$68,905.18	\$68,905.18
Removal of Improvements (3%)	1	LSUM	\$137,810.36	\$137,810.36
Temporary Traffic Control (3%)	1	LSUM	\$137,810.36	\$137,810.36
Drainage Improvements (5%)	1	LSUM	\$229,683.93	\$229,683.93
Landscaping (5%)	1	LSUM	\$229,683.93	\$229,683.93
Utility Relocations (5%)	1	LSUM	\$229,683.93	\$229,683.93
Mobilization (10%)	1	LSUM	\$459,367.85	\$459,367.85
<b>Subtotal</b>				<b>\$6,132,561</b>
Contingency 25%				\$1,533,140
<b>Total</b>				<b>\$7,665,701</b>
Engineering & Surveying Costs 15%				\$1,149,855
Construction Administration & Inspection Costs 10%				\$766,570
Easement & Right-of-Way Costs 5%				\$383,285
<b>Grand Total</b>				<b>\$9,965,411</b>

Costs Based on 2018 prices. Should include Inflation for each year beyond 2018

**Table 10: Northeast Chadwick Flyer Connector Trail Opinion of Probable Cost, 10ft Paved Path with 12ft Bridges**

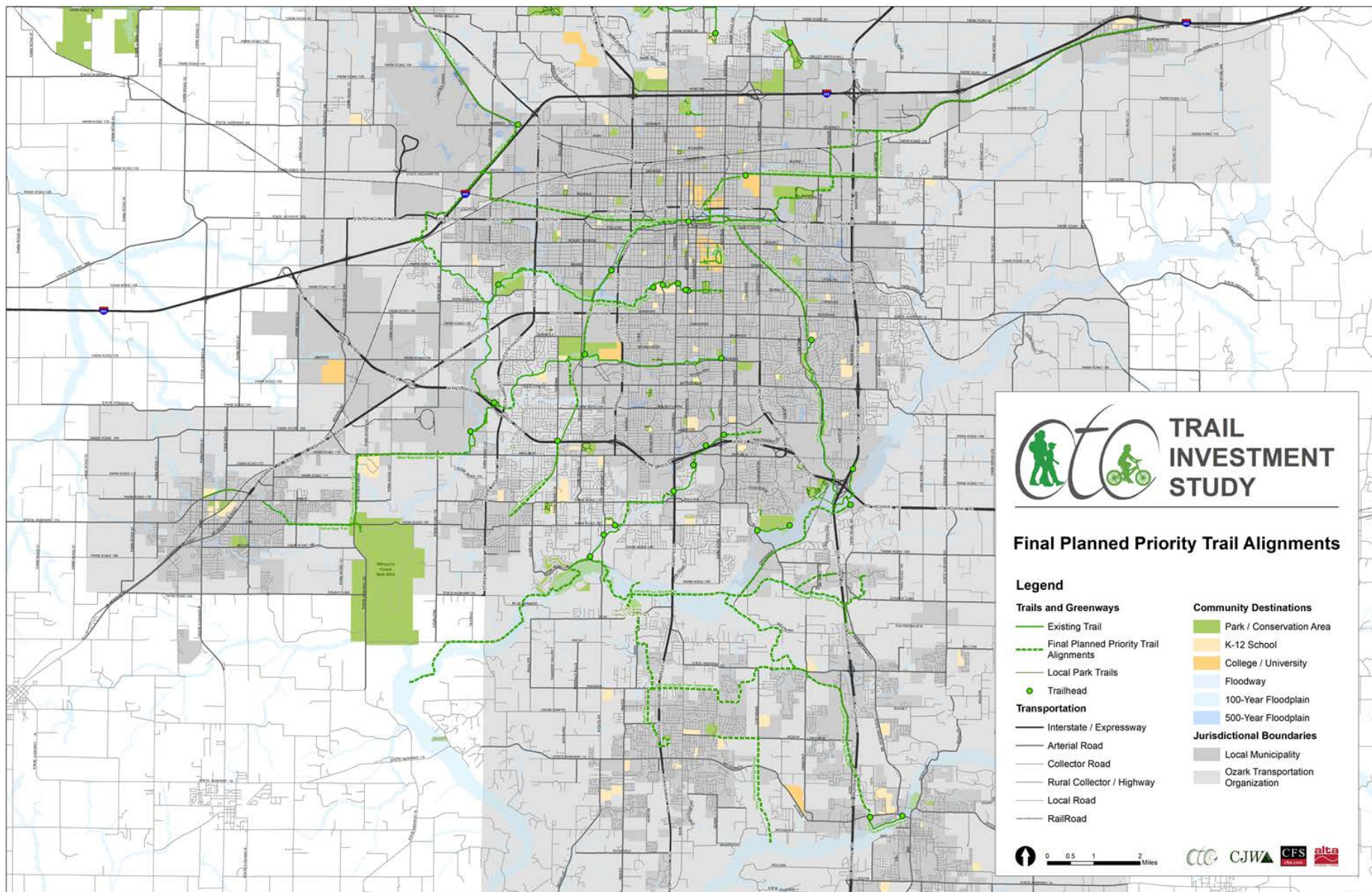
ITEM	QTY.	UNIT	UNIT COST	COST(\$)
Clearing & Grubbing	2	AC	\$7,500.00	\$15,000.00
Linear Grading Class 1	208	STA	\$3,000.00	\$624,000.00
Compacting Subgrade	24,744	SY	\$2.00	\$49,488.00
4" Aggregate Base	24,744	SY	\$9.00	\$222,696.00
6" Concrete Pavement	23,089	SY	\$85.00	\$1,962,565.00
7" Non-reinforced Concrete (Road Base Pvmf)	400	SY	\$85.00	\$34,000.00
Bituminous Pavement Mix PG64-22 BP-1 (2")	44	TON	\$95.00	\$4,222.22
Tack Coat (0.10 GAL/SY)	400	GAL	\$5.00	\$2,000.00
Driveway Repairs & Reconstruction	455	SY	\$90.00	\$40,950.00
Curb Ramps	800	SY	\$135.00	\$108,000.00
Truncated Domes	640	SF	\$30.00	\$19,200.00
Concrete Curb	640	LF	\$35.00	\$22,400.00
Wayfinding Signage (1 per 0.25 MI of Trail)	16	EA	\$1,000.00	\$16,000.00
Rock Lining (100 CY per bridge abutment)	0	CY	\$85.00	\$0.00
24" White Stop Bars	210	LF	\$15.00	\$3,150.00
24" White Yield Markings	12	EA	\$50.00	\$600.00
30" White High Visibility Markings	960	LF	\$20.00	\$19,200.00
Trail Signage & Posts (2 signs per 500')	84	EA	\$350.00	\$29,400.00
Roadway Signage & Posts (4 signs per Crossing)	64	EA	\$350.00	\$22,400.00
RRFB	2	EA	\$10,000.00	\$20,000.00
Signal Modification (Pedestrian-Cyclist Upgrades)	3	EA	\$50,000.00	\$150,000.00
Seed, mulch, etc.	8	ACRE	\$5,000.00	\$40,000.00
Temporary Silt Fence	20,780	LF	\$3.00	\$62,340.00
Ditch Checks	208	EA	\$225.00	\$46,755.00
Sediment Removal	416	CY	\$40.00	\$16,624.00
Pedestrian Bridge (12' wide)	0	SF	\$300.00	\$0.00
Decorative Pedestrian Guardrail	0	LF	\$120.00	\$0.00
Contractor Construction Staking (1%)	1	LSUM	\$35,309.90	\$35,309.90
Site Furnishings (1.5%)	1	LSUM	\$52,964.85	\$52,964.85
Removal of Improvements (3%)	1	LSUM	\$105,929.71	\$105,929.71
Temporary Traffic Control (3%)	1	LSUM	\$105,929.71	\$105,929.71
Drainage Improvements (5%)	1	LSUM	\$176,549.51	\$176,549.51
Landscaping (5%)	1	LSUM	\$176,549.51	\$176,549.51
Utility Relocations (5%)	1	LSUM	\$176,549.51	\$176,549.51
Mobilization (10%)	1	LSUM	\$353,099.02	\$353,099.02
<b>Subtotal</b>				<b>\$4,713,872</b>
Contingency 25%				\$1,178,468
<b>Total</b>				<b>\$5,892,340</b>
Engineering & Surveying Costs 15%				\$883,851
Construction Administration & Inspection Costs 10%				\$589,234
Easement & Right-of-Way Costs 5%				\$294,617
<b>Grand Total</b>				<b>\$7,660,042</b>

Costs Based on 2018 prices. Should include Inflation for each year beyond 2018

**Table 11: X Center to Finley River Greenway Connector Trail Opinion of Probable Cost, 10ft Paved Path with 12ft Bridges**

ITEM	QTY.	UNIT	UNIT COST	COST(\$)
Clearing & Grubbing	4	AC	\$7,500.00	\$30,000.00
Linear Grading Class 1	185	STA	\$3,000.00	\$555,000.00
Compacting Subgrade	21,449	SY	\$2.00	\$42,898.00
4" Aggregate Base	21,449	SY	\$9.00	\$193,041.00
6" Concrete Pavement	20,479	SY	\$85.00	\$1,740,715.00
7" Non-reinforced Concrete (Road Base Pvmf)	150	SY	\$85.00	\$12,750.00
Bituminous Pavement Mix PG64-22 BP-1 (2")	17	TON	\$95.00	\$1,563.33
Tack Coat (0.10 GAL/SY)	150	GAL	\$5.00	\$750.00
Driveway Repairs & Reconstruction	520	SY	\$90.00	\$46,800.00
Curb Ramps	300	SY	\$135.00	\$40,500.00
Truncated Domes	240	SF	\$30.00	\$7,200.00
Concrete Curb	240	LF	\$35.00	\$8,400.00
Wayfinding Signage (1 per 0.25 MI of Trail)	14	EA	\$1,000.00	\$14,000.00
Rock Lining (100 CY per bridge abutment)	400	CY	\$85.00	\$34,000.00
24" White Stop Bars	70	LF	\$15.00	\$1,050.00
24" White Yield Markings	12	EA	\$50.00	\$600.00
30" White High Visibility Markings	360	LF	\$20.00	\$7,200.00
Trail Signage & Posts (2 signs per 500')	74	EA	\$350.00	\$25,900.00
Roadway Signage & Posts (4 signs per Crossing)	24	EA	\$350.00	\$8,400.00
RRFB	2	EA	\$10,000.00	\$20,000.00
Signal Modification (Pedestrian-Cyclist Upgrades)	1	EA	\$50,000.00	\$50,000.00
Seed, mulch, etc.	7	ACRE	\$5,000.00	\$35,000.00
Temporary Silt Fence	18,431	LF	\$3.00	\$55,293.00
Ditch Checks	184	EA	\$225.00	\$41,469.75
Sediment Removal	369	CY	\$40.00	\$14,744.80
Pedestrian Bridge (12' wide)	2,520	SF	\$300.00	\$756,000.00
Decorative Pedestrian Guardrail	200	LF	\$120.00	\$24,000.00
Contractor Construction Staking (1%)	1	LSUM	\$37,672.95	\$37,672.95
Site Furnishings (1.5%)	1	LSUM	\$56,509.42	\$56,509.42
Removal of Improvements (3%)	1	LSUM	\$113,018.85	\$113,018.85
Temporary Traffic Control (3%)	1	LSUM	\$113,018.85	\$113,018.85
Drainage Improvements (5%)	1	LSUM	\$188,364.74	\$188,364.74
Landscaping (5%)	1	LSUM	\$188,364.74	\$188,364.74
Utility Relocations (5%)	1	LSUM	\$188,364.74	\$188,364.74
Mobilization (10%)	1	LSUM	\$376,729.49	\$376,729.49
<b>Subtotal</b>				<b>\$5,029,339</b>
Contingency 25%				\$1,257,335
<b>Total</b>				<b>\$6,286,673</b>
Engineering & Surveying Costs 15%				\$943,001
Construction Administration & Inspection Costs 10%				\$628,667
Easement & Right-of-Way Costs 5%				\$314,334
<b>Grand Total</b>				<b>\$8,172,675</b>

Costs Based on 2018 prices. Should include Inflation for each year beyond 2018





The background features abstract, overlapping green geometric shapes, primarily triangles and polygons, in various shades of green, creating a modern, layered effect. The shapes are concentrated on the left and right sides of the frame, leaving a large white central area.

Questions?