

NOVEMBER 2025

# FUNDING OPPORTUNITIES

Ozarks Transportation Organization's Monthly Update

Renew Jordan Creek Project Daylighting Campbell Avenue Bridge

## Local Project Update

- The Chadwick Flyer Pedestrian Overpass bridge will be set in place overnight on the 18th and 19th!
- The RFQ has been issued for the I-44 Design Build.
- Christian County's Green Bridge Replacement is scheduled to be completed in December



Christian County Green Bridge Replacement

## Upcoming Meetings

All meetings at OTO Offices  
2208 W CHESTERFIELD BLVD SUITE 101  
SPRINGFIELD, MO

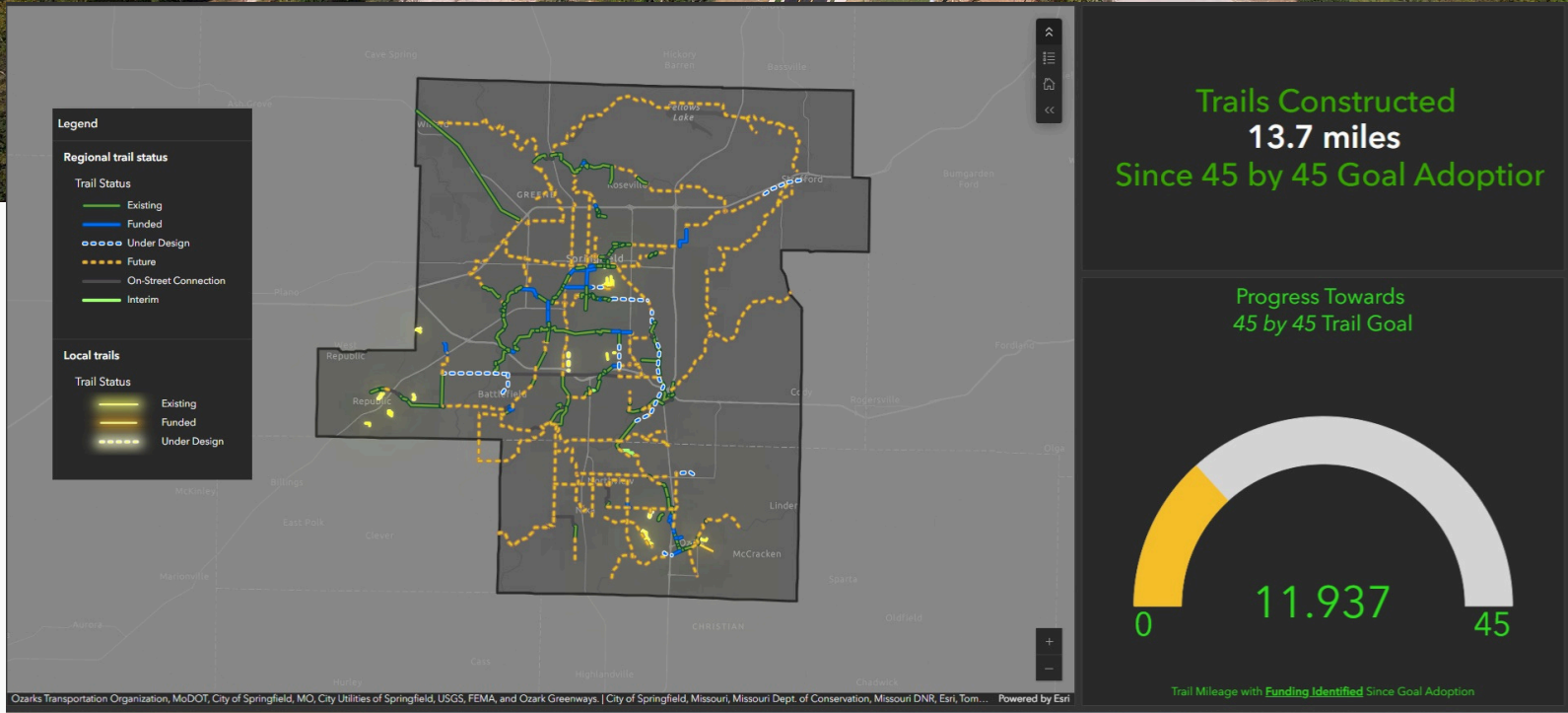
OTO Board of Directors  
Meeting  
NOVEMBER 20, 2025  
12:00 PM

OTO Executive Committee  
Meeting  
DECEMBER 10, 2025  
12:00 PM

OTO Offices Closed  
Thanksgiving  
NOVEMBER 27 & 28, 2025







## Trail Project Updates

### COMPLETED PROJECTS

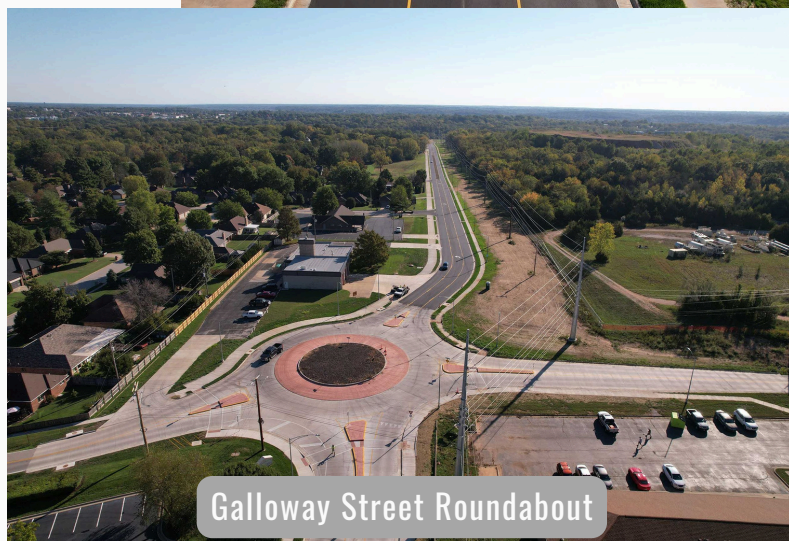
- The City of Springfield completed the Galloway Street Widening project (funded with City of Springfield funds), which includes a trail and roundabout.
- The City of Springfield completed the Smith Park Trail project.

### PROJECTS NEARING COMPLETION

- The City of Ozark - Chadwick Flyer Pedestrian Overpass, Chadwick Flyer Trail Phase V, Chadwick Flyer Trail High School Spur, Finley River Farms Connector
- The City of Springfield Le Compte Trail. The Ward Branch Trail is about to start construction.

### ENGINEERING STUDIES

- The City of Willard has started the engineering for a pedestrian underpass at Hwy 160 and Hwy AB.







## Transit Update!

### HUMAN SERVICES VEHICLES

MoDOT has confirmed that all vehicles from the OTO 2024 Call for Projects will be delivered soon.

The vehicles have been inspected and are ready to be delivered.

- OATS - 3 Ford Transit Vehicles
- Empower Abilities - 1 Ford Transit Van
- Ozark Senior Center - 1 Ford Transit Van
- Nova Center of the Ozarks - 1 Ford Transit Van
- Ozark Senior Center - 1 Ford Transit Van (OTO 2023 Award)

### TRANSIT PROVIDER BROCHURE

OTO has updated the Transit Provider Brochure for the OTO area and will distribute it soon.

### TRANSIT COORDINATION PLAN UPDATE

The OTO will begin the Transit Coordination Plan update in late spring/early summer.

## FEDERAL GRANT UPDATE

THE FEDERAL GOVERNMENT SHUTDOWN DELAYED NEW GRANT ANNOUNCEMENTS. THE GOVERNMENT IS NOW BACK OPEN AND WE ANTICIPATE TO SEE THE FOLLOWING NOFO SOON!

- 2026 BETTER UTILIZING INVESTMENTS TO LEVERAGE DEVELOPMENT (BUILD) GRANT

## STATE GRANT UPDATE

- THE MISSOURI STATE PARK DEPARTMENT IS CURRENTLY ACCEPTING APPLICATIONS FOR THE BUS GRANT AND OUTDOOR RECREATION LEGACY PARTNERSHIP PROGRAM:  
[HTTPS://MOSTATEPARKS.COM/PAGE/GRANT-OPPORTUNITIES](https://mostateparks.com/page/grant-opportunities)



Ozark Senior Center with 2022 Award Vehicle

<h4>Private Transportation</h4> <p><b>Ability Transportation</b> (417) 414-9100 PO Box 4833, Springfield, MO 65808 <b>Website:</b> <a href="http://www.abilitytrans.com">www.abilitytrans.com</a> <b>Services:</b> Medical, NEMT, personal and social transportation for all age groups, with physical assistance if requested.</p> <p><b>Fisk Transportation Group</b> (417) 862-2900 12001 E Trafficway, Springfield, MO 65802 <b>Website:</b> <a href="http://www.fisklimo.com">www.fisklimo.com</a> <b>Hours:</b> Office 8 a.m. - 5 p.m., weekdays, Vehicles 24/7 <b>Services:</b> Van, Bus, Professional Rental Car</p> <p><b>Jane's Ride</b> (417) 814-2962 1655 S Enterprise Ave, Unit B4, Springfield, MO 65804 <b>Website:</b> <a href="http://www.janesride.com">www.janesride.com</a> <b>Services:</b> Private pay non-emergency medical transportation services</p> <p><b>United Access</b> (417) 890-1043 11389 N Cedarbrook Ave, Springfield, MO 65802 <b>Website:</b> <a href="http://www.unitedaccess.com">www.unitedaccess.com</a> <b>Services:</b> Offers Wheelchair Accessible Van or SUV Rentals</p> <p><b>Springfield Car and Shuttle Service</b> (417) 894-1071 <b>Website:</b> <a href="http://www.springfieldcarserviceandshuttle.com">www.springfieldcarserviceandshuttle.com</a> <b>Services:</b> Shuttle service, NEMT</p> <p><b>Springfield Yellow Cab Co</b> (417) 862-5511 <b>Website:</b> <a href="http://www.springfieldyellowcabco.com">www.springfieldyellowcabco.com</a></p> <p><b>Ridesharing</b> Ridesharing is available 24/7, by using an app on smart phones or via websites. Note that vehicles might not be wheelchair accessible: <b>Uber</b> <a href="http://www.uber.com">www.uber.com</a> <b>Lyft</b> <a href="http://www.lyft.com">www.lyft.com</a></p>	<h4>Online Resources</h4> <p><b>City Utilities Transit:</b> </p> <p><b>OATS Transportation:</b> </p> <p><b>Online OTO list of transit providers:</b> </p> <p><b>OTOZARKS TRANSPORTATION ORGANIZATION</b>  The Ozarks Transportation Organization (OTO) MPO (Metropolitan Planning Organization) is the federally designated regional transportation planning organization that serves as a forum for cooperative transportation decision-making by state and local governments, and regional transportation and planning agencies. For more information, or to submit a comment please visit one of these websites: <a href="http://www.OzarksTransportation.org">www.OzarksTransportation.org</a> <a href="http://www.GiveUsYourInput.org">www.GiveUsYourInput.org</a></p> <p><small>This brochure was prepared in cooperation with the USDOT, including FHWA and FTA, as well as the Missouri Department of Transportation. The opinions, findings, and conclusions expressed in this publication are those of the authors and not necessarily those of the Missouri Highways and Transportation Commission, the Federal Highway Administration or the Federal Transit Administration.</small></p>	<h4>OZARKS AREA TRANIST PROVIDERS</h4>  <p><a href="http://WWW.OZARKSTRANSPORTATION.ORG">WWW.OZARKSTRANSPORTATION.ORG</a></p>
--	--	--

New Transit Provider Brochure

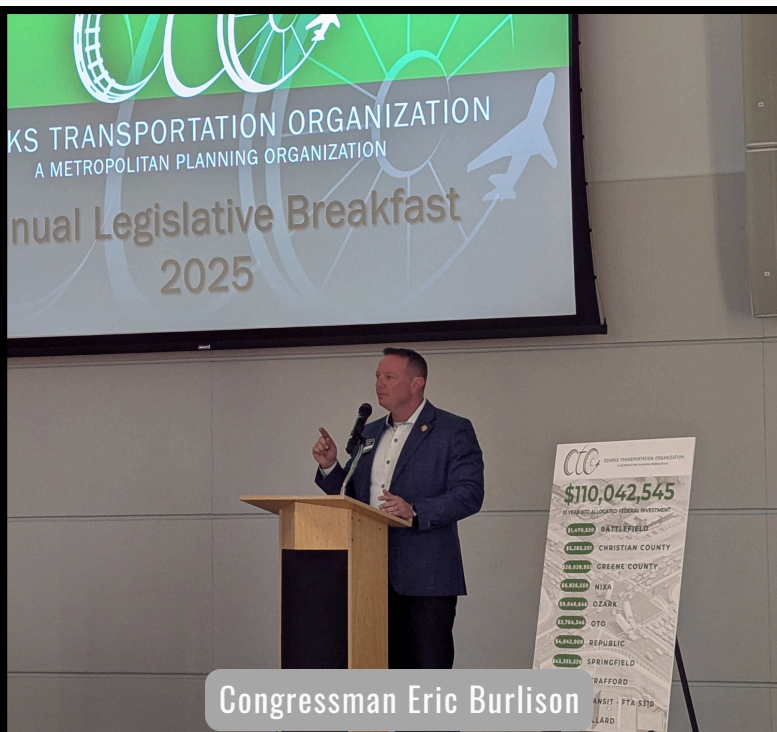




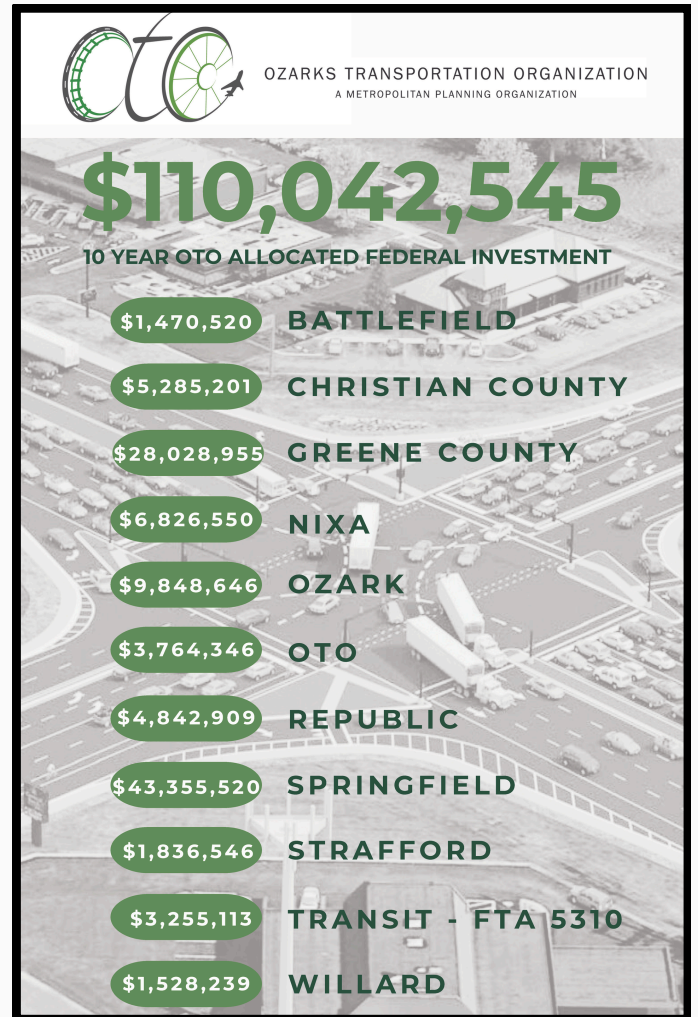
## 2025 OTO Legislative Breakfast

OTO hosted the 2025 Annual Legislative Breakfast at Drury University on Tuesday, October 21, 2025. The OTO highlighted the past 10-years of regional partnerships.

OTO Chair Greene County Commissioner John Russell presented MO Highway Commissioner Ann Marie Baker the OTO Regional Appreciation Award.



Congressman Eric Burlison





# Job Openings

Christian County - Assistant Highway Administrator

<https://christiancountymo.criterionhcm.com/jobs/395/1/#373>

City of Springfield - Superintendent of Streets - Public Works

<https://www.governmentjobs.com/careers/springfieldmo/jobs/5042895/professional-engineer-public-works-traffic-transportation>

City Utilities - GIS Technician Intern

[https://cityutilities.wd5.myworkdayjobs.com/en-US/Careers/job/Springfield-MO/GIS-Technician-Intern\\_R25\\_29](https://cityutilities.wd5.myworkdayjobs.com/en-US/Careers/job/Springfield-MO/GIS-Technician-Intern_R25_29)

City of Nixa - Director of Nixa Utilities and Public Works

<https://www.nixa.com/job/director-of-nixa-utilities-and-public-works/>

City of Republic - Senior Planner (with Associate Planner Underfill Option)

<https://www.governmentjobs.com/careers/republicmo/jobs/5102630/senior-planner-with-associate-planner-underfill-option>

MoDOT - Area Engineer - SW District

<https://mocareers.mo.gov/hiretrue/ce3/job-board/5effe9b2-4b89-494b-ac76-c45e25190768/78f5dc37-a1ba-4ee1-b6cc-d214f77e0878?jb=1>

MoDOT - Summer Internships - Springfield Planning, I-44 Design Build, Springfield Design, Springfield Traffic, TMC Traffic

Internship postings can be found on MOCareers:

<https://mocareers.mo.gov/hiretrue/ce3/job-board/5effe9b2-4b89-494b-ac76-c45e25190768>



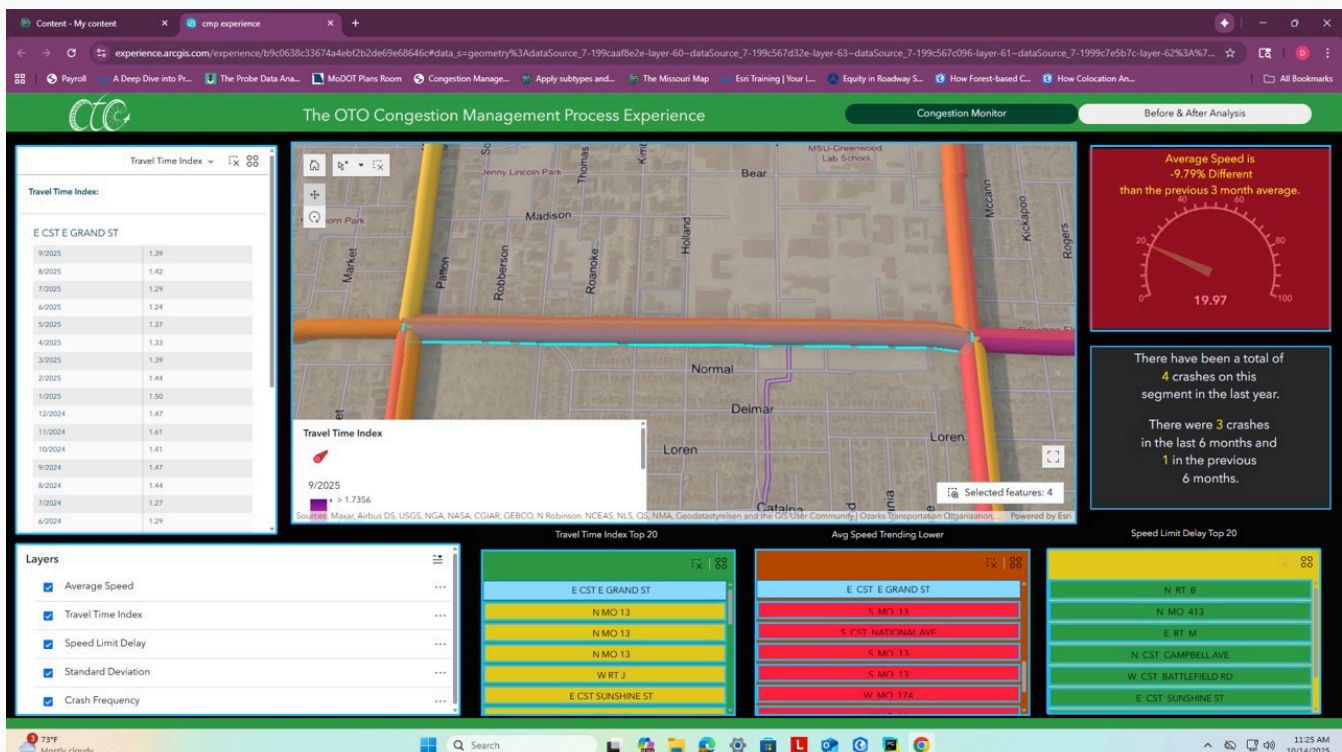


# Congestion Management Process (CMP) App

The CMP consists of measures of congestion and strategies to manage it. The OTO identifies congested roadways with volume-to-capacity ratios, intersection level of service (LOS), crash frequency, and travel speed. These measures are mapped and monitored to locate roadways where congestion is occurring or is expected to occur. The CMP Experience includes a map application that contains monthly travel speed statistics and crash frequency for roadway segments in the OTO study area to monitor congestion.

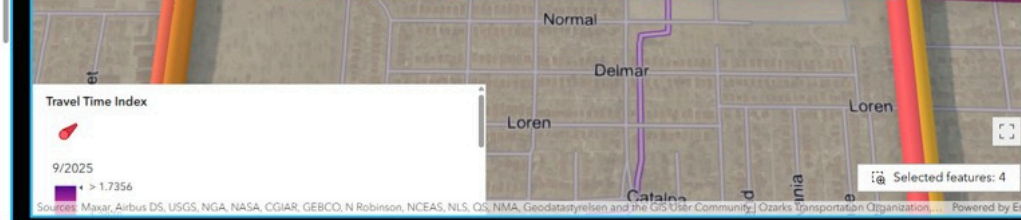
The application contains lists for segments with higher travel time indices, average speeds trending lower, and speed limit delay (25th percentile speed – posted speed limit). Segments can be selected by lists or the manual selection tool on the map. When a segment is selected on the map, widgets on the page will activate with information for that segment.

Another phase of the process is to evaluate the effectiveness of congestion management strategies identified in the initial phase of the process. The before and after analysis examines travel speeds and crash rates to evaluate the effectiveness of geometric improvements at intersections and adding capacity in reducing congestion. Five recent project locations have been selected to review crash data and speed statistics before and after project completion.





		1.39
2/2025		1.44
1/2025		1.50
12/2024		1.47
11/2024		1.61
10/2024		1.41
9/2024		1.47
8/2024		1.44
7/2024		1.27
6/2024		1.29



There have been a total of 4 crashes on this segment in the last year.

There were 3 crashes in the last 6 months and 1 in the previous 6 months.

# CMP Process App Continued

## The Data

The OTO utilized MoDOT crash statistics and speed probe data from the Regional Integrated Transportation Information System (RITIS) at the before and after analysis locations. For each project location, crash history from 2018 through July of 2025 were used to create charts. MoDOT state of the system segments provided route lengths, intersection entering and roadway volumes to produce annual crash rates for project locations.

Unaveraged speed probe data from RITIS was downloaded for Topological Segmentation (TS) along roadways for the pm peak period during March - May for 2023 and 2025 for comparison purposes. Historic speed data for TS roadways is unavailable prior to 2023. Corridor speed bin visualizations from RITIS depict TMC HERE segments. Historical speed data for the TMC segments is available going back to 2012. The speed bin corridor visualizations evaluate the pm peak from March - May for 2019 and 2025.

The CMP Experience is a work in progress. OTO staff will continue to update the crash frequency and speed probe data while working to improve the presentation and functionality of the application. If you have suggestions for improvement or questions, contact Dave Faucett at (417) 865-3042 ext. 104 or [dfaucett@ozarkstransportation.org](mailto:dfaucett@ozarkstransportation.org). The link to the CMP Process is here:

<https://experience.arcgis.com/experience/b9c0638c33674a4ebf2b2de69e68646c>

