



PUBLIC COMMENT



Area of concern: Farm Road 192 Extension

City/County of concern: Springfield/Greene County

Date received: 06/16/2026

Received through: Map-A-Concern (OTO website)

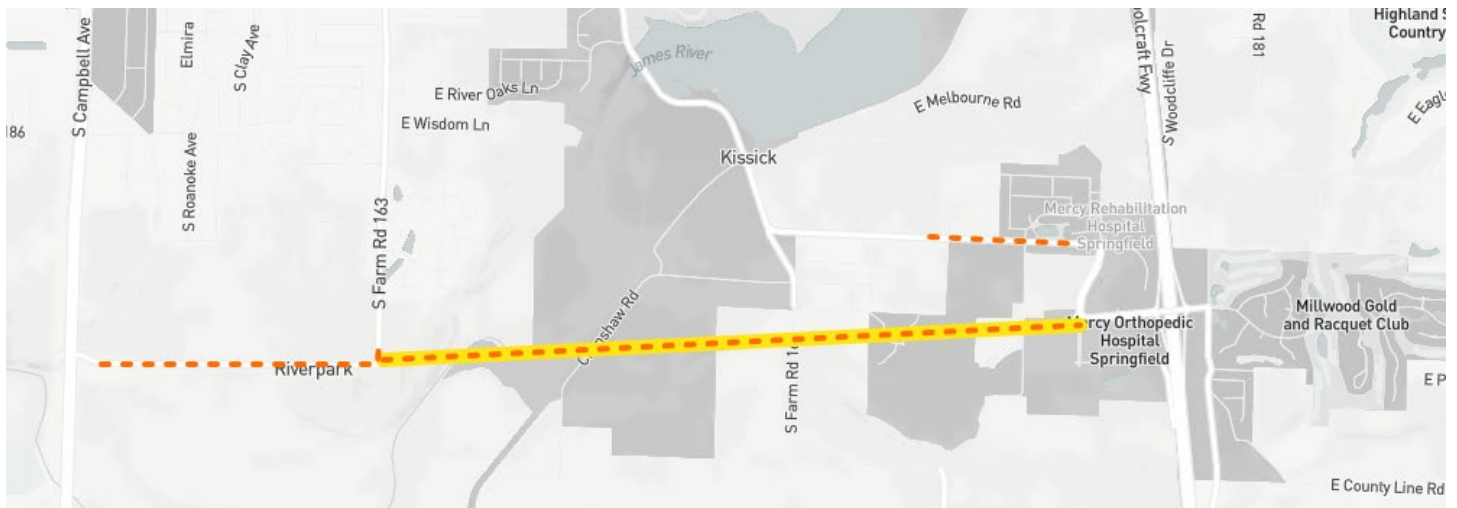
Contact Name: Allen

Contact Email/Ph #: N/A

Comment:

Needs a extend 192 The road and walking too

Map



OTO Response: Unable to respond through the Map-A-Concern feature



PUBLIC COMMENT



Area of concern: Future Connection between Longview Rd and US65

City/County of concern: Ozark/Christian County

Date received: 06/16/2026

Received through: Map-A-Concern (OTO website)

Contact Name: Allen

Contact Email/Ph #: N/A

Comment:

A connection is being made here where I'll take pressure off the other , two exchanges and allow for future use to build a bridge over 65 when they have the money

Map



OTO Response: Unable to respond through the Map-A-Concern feature



PUBLIC COMMENT



Area of concern: Future Outer Road N 19th Street to Lakeland Drive

City/County of concern: Ozark/Christian County

Date received: 06/16/2026

Received through: Map-A-Concern (OTO website)

Contact Name: Allen

Contact Email/Ph #: N/A

Comment:

Need to extend the road for a future on-ramp off-ramp connection. It would help out the area for development

Map



OTO Response: Unable to respond through the Map-A-Concern feature