

Safe Streets & Roads For All (SS4A)

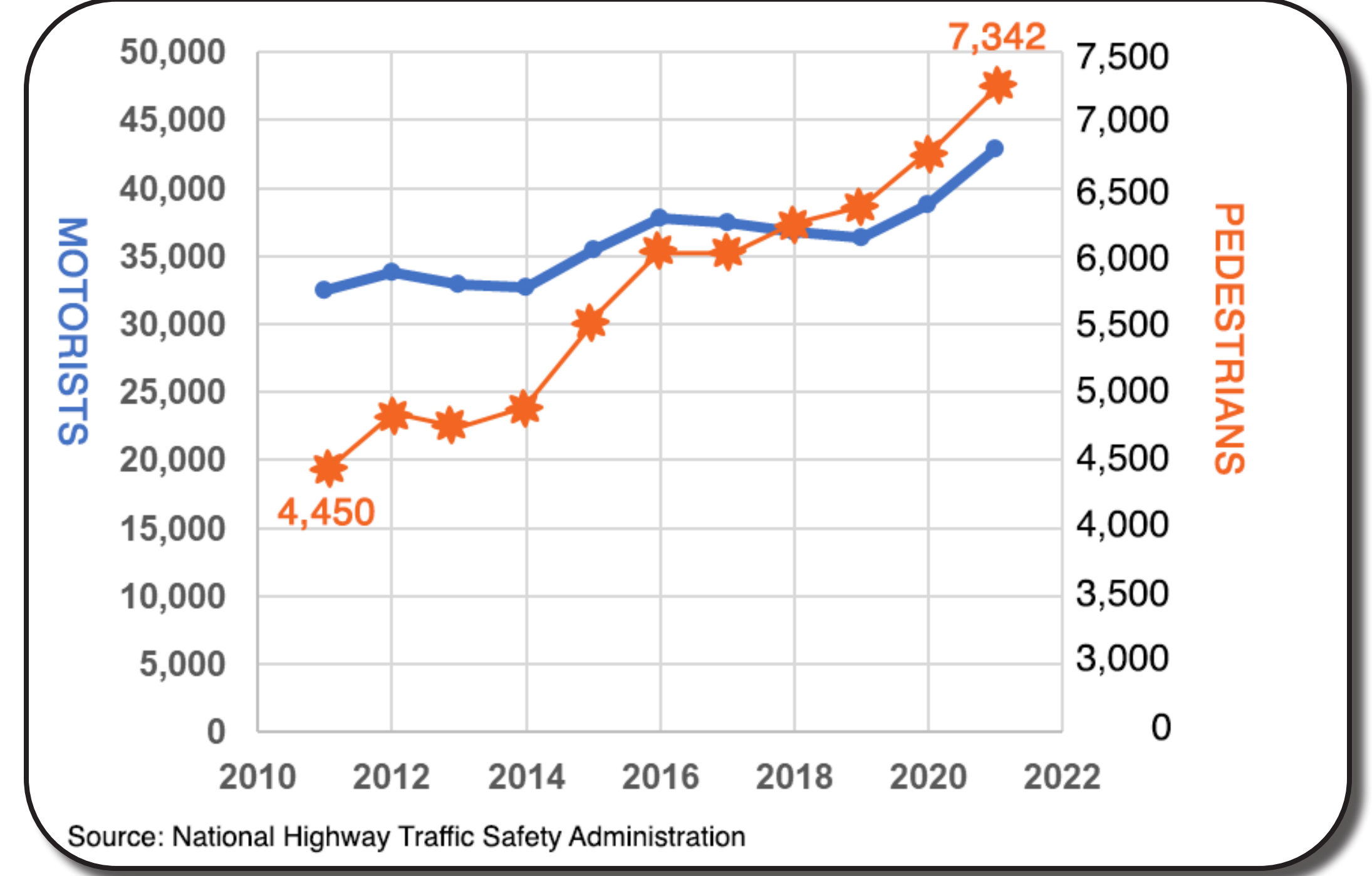
Road Safety Trends

Traffic crashes are a leading cause of preventable death in the United States. According to the National Highway Traffic Safety Administration (NHTSA), 2021 saw nearly 43,000 traffic deaths across the nation, a 16-year high. Almost 43,000 people were again killed in traffic crashes in 2022. **Since 2020, notable increases include:**

- > **Fatalities on urban roads up 16%**
- > **Pedestrian fatalities up 13%**
- > **Bicycle fatalities up 5%**
- > **Speeding related fatalities up 5%**

In response to the alarming rise in traffic deaths, the Safe Streets and Roads for All (SS4A) grant program was established. The SS4A program has \$5 billion in appropriated funds over 5 years, 2022-2026, to fund initiatives to prevent roadway deaths and serious injuries.

Crash Fatalities by Year and Type



National trends are also observed locally. In the OTO region from 2013-2022, fatal and serious injury crashes per year have increased by 26%. In the same time period, bicycle and pedestrian involved fatal and serious injury crashes per year have more than doubled.

Principles of a Safe System Approach to Roadway Safety

Death and Serious Injuries are Unacceptable

Humans Make Mistakes

Humans Are Vulnerable

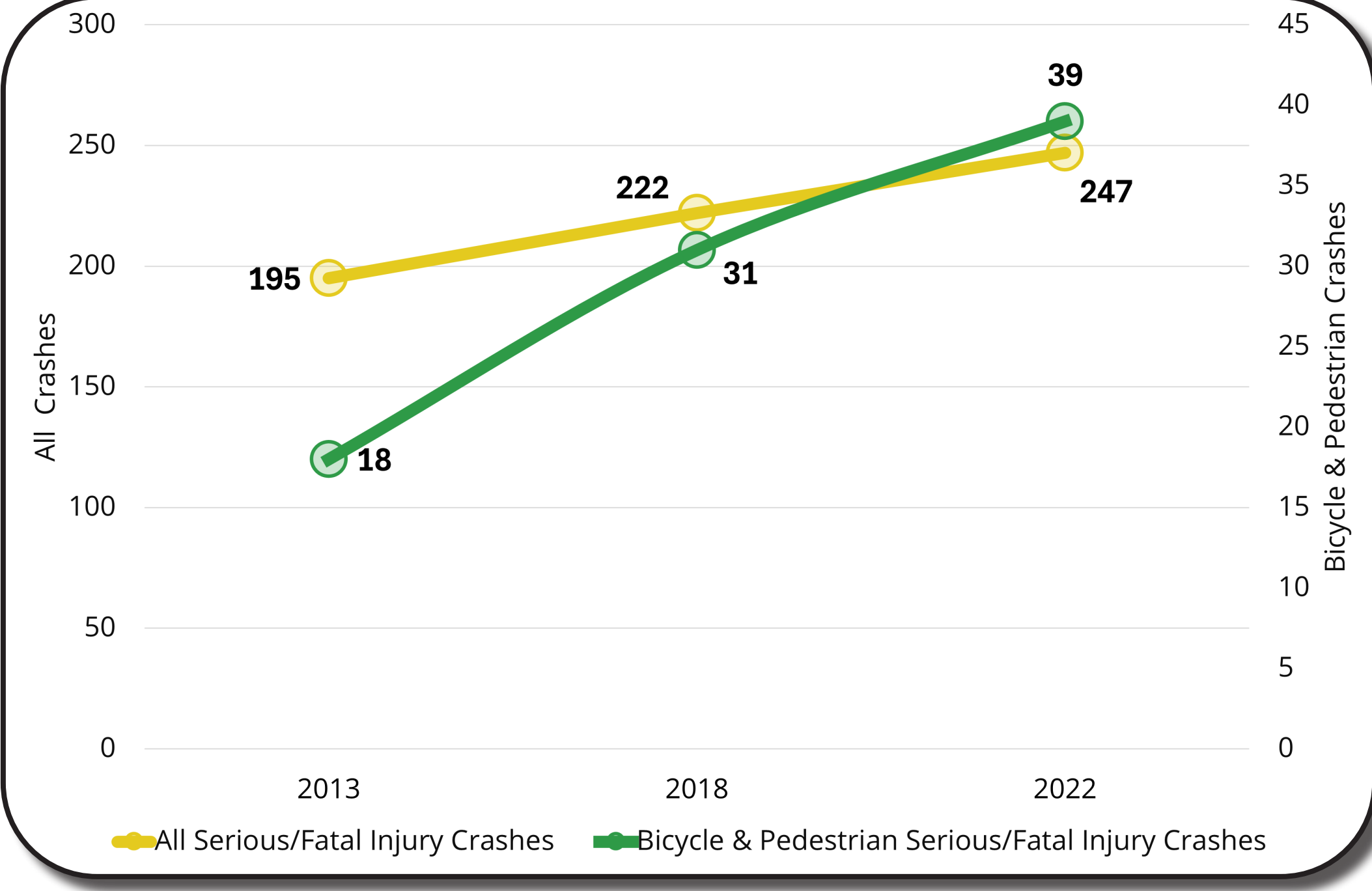
Responsibility is Shared

Safety is Proactive

Redundancy is Crucial



OTO Fatal & Serious Injury Crashes (2013-2022)



Safety Toolkit

Keeping our roads safe is important for everyone, whether they're driving, walking, biking, or using other ways to get around. There is no single safety solution that works everywhere. The best safety improvements depend on the road, how busy it is, and what's around it. Here are examples of the types of improvements available in our safety toolkit.

Bicycle & Pedestrian Improvements

Bicycle Lanes



Urban Arterial Improvements

Complete Streets



Shared Use Paths / Trails



Lighting



Crosswalks & Pedestrian Signals



Intersection Improvements

Median Refuge



Rural Highway Improvements

Rumble Strips



Intersection Conflict Warning Systems



Warning Signs

