



OZARKS TRANSPORTATION ORGANIZATION  
A METROPOLITAN PLANNING ORGANIZATION

205 PARK CENTRAL EAST, SUITE 205    SPRINGFIELD, MO 65806    417-865-3042 [p]    417-862-6013 [f]

11 January 2016

Ms. Eva Voss  
Transportation Planning  
Missouri Department of Transportation  
P. O. Box 270  
Jefferson City, Missouri 65102

Dear Ms. Voss:

I am writing to advise you that the Ozarks Transportation Organization approved Administrative Modification Number Six to the OTO FY 2015-2018 Transportation Improvement Program (TIP) on January 11, 2016. The adoption included demonstration of fiscal constraint as required by federal regulations. Please find enclosed the administrative modification, which is detailed on the following page.

Please let me know if you have any questions or need any other information.

Sincerely,

Natasha L. Longpine, AICP  
Principal Planner

Enclosure: TIP Administrative Modification Packet



## **Administrative Modification Number 6 to the FY 2015-2018 Transportation Improvement Program**

### **Ozarks Transportation Organization (Springfield, MO Area MPO)**

#### **DESCRIPTION:**

There are twenty total items included as part of Administrative Modification Six to the FY 2015-2018 Transportation Improvement Program.

- Changes in a project's programmed amount less than 15% (up to \$2,000,000)
  1. **SP1106** – Engineering was reduced in FY 2016 to \$2,000 from \$3,800.
- Moving a project's funds to another Fiscal Year provided they are not being moved into or out of the first four FY's of a TIP.
  2. **EN1306** – Funding moved to FY 2016
  3. **EN1401** – Unobligated funding moved to FY 2016
  4. **EN1503** – Unobligated funding moved to FY 2016
  5. **EN1504** – Unobligated funding moved to FY 2016
  6. **EN1505** – Unobligated funding moved to FY 2016
  7. **EN1506** – Unobligated funding moved to FY 2016
  8. **EN1507** – Funding moved to FY 2016
  9. **EN1508** – Funding moved to FY 2016
  10. **EN1509** – Funding moved to FY 2016
  11. **EN1510** – Unobligated funding moved to FY 2016
  12. **EN1511** – Unobligated funding moved to FY 2016
  13. **EN1512** – Funding moved to FY 2016
  14. **EN1513** – Funding moved to FY 2016
  15. **EN1514** – Funding moved to FY 2016
  16. **EN1515** – Funding moved to FY 2016
  17. **NX0601** – Unobligated funding moved to FY 2016
  18. **RP1502** – Funding moved to FY 2016
  19. **SP1209** – Unobligated funding moved to FY 2016
  20. **SP1415** – Moved obligated amount to FY 2015
- Moving a project's funds to another Fiscal Year provided they are not being moved into or out of the first four FY's of a TIP.
- Minor changes to funding sources between federal funding categories or between state and local sources.
- Adding a project to the TIP which is split from a "parent project provided the cumulative, total amount of Federal funding in each funding category of the combined projects remains intact and the overall scope of work intended to be accomplished does not change.
  21. **SP1109** – Unobligated funding moved to FY 2016 and the creation of a split project (**SP1603**) for just the utilities and access improvements.



# Transportation Improvement Program - FY 2015-2018

Project Detail by Section and Project Number with Map

## E) Roadways Section

**TIP #** SP1106      **EASTGATE AVENUE RELOCATION**  
**Route** Eastgate Avenue  
**From** North of Chestnut Expressway  
**To** Chestnut Expressway  
**Location/Agency**  
**Federal Agency**  
**Responsible Agency** MoDOT  
**Federal Funding Category** STP  
**MoDOT Funding Category** Major Projects and Emerging Needs  
**AC Year of Conv.** FY 2015, FY 2016  
**STIP #** 8P0850B



### Project Description

Relocation Eastgate Avenue (east outer road) intersection east of Route 65.

Fund Code	Source	Phase	FY2015	FY2016	FY2017	FY2018	Total
FHWA (STP)	Federal	ENG	\$0	\$3,200	\$1,600	\$126,400	\$131,200
MoDOT	State	ENG	\$400	\$600	\$400	\$31,600	\$33,000
MoDOT-AC	State	ENG	\$1,600	\$0	\$0	\$0	\$1,600
MoDOT	State	ROW	\$0	\$400	\$0	\$0	\$400
MoDOT-AC	State	ROW	\$0	\$1,600	\$0	\$0	\$1,600
FHWA (STP)	Federal	CON	\$0	\$0	\$0	\$1,163,200	\$1,163,200
LOCAL	Local	CON	\$0	\$0	\$0	\$1,179,000	\$1,179,000
MoDOT	State	CON	\$0	\$0	\$0	\$265,800	\$265,800
<b>Totals</b>			<b>\$2,000</b>	<b>\$5,800</b>	<b>\$2,000</b>	<b>\$2,766,000</b>	<b>\$2,775,800</b>

### Notes

Source of State Funds: State transportation revenues. Source of Local Funds: City of Springfield 1/8-cent transportation sales tax. \$100,000 STP-Urban attributable to Greene County.

<b>Prior Cost</b>	\$73,000
<b>Future Cost</b>	\$0
<b>Total Cost</b>	\$2,848,800

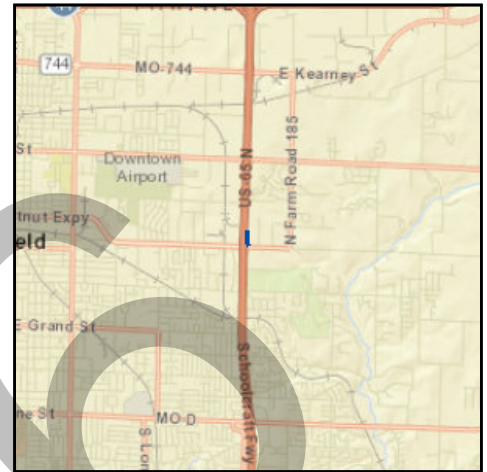


# Transportation Improvement Program - FY 2015-2018

Project Detail by Section and Project Number with Map

## E) Roadways Section

**TIP #** SP1106      **EASTGATE AVENUE RELOCATION**  
**Route** Eastgate Avenue  
**From** North of Chestnut Expressway  
**To** Chestnut Expressway  
**Location/Agency** City of Springfield  
**Federal Agency** FHWA  
**Responsible Agency** MoDOT  
**Federal Funding Category** STP  
**MoDOT Funding Category** Major Projects and Emerging Needs  
**AC Year of Conv.** FY 2015, FY 2016  
**STIP #** 8P0850B



### Project Description

Relocation Eastgate Avenue (east outer road) intersection east of Route 65.

Fund Code	Source	Phase	FY2015	FY2016	FY2017	FY2018	Total
FHWA (STP)	Federal	ENG	\$0	\$1,600	\$1,600	\$126,400	\$129,600
MoDOT	State	ENG	\$400	\$400	\$400	\$31,600	\$32,800
MoDOT-AC	State	ENG	\$1,600	\$0	\$0	\$0	\$1,600
MoDOT	State	ROW	\$0	\$400	\$0	\$0	\$400
MoDOT-AC	State	ROW	\$0	\$1,600	\$0	\$0	\$1,600
FHWA (STP)	Federal	CON	\$0	\$0	\$0	\$1,163,200	\$1,163,200
LOCAL	Local	CON	\$0	\$0	\$0	\$1,179,000	\$1,179,000
MoDOT	State	CON	\$0	\$0	\$0	\$265,800	\$265,800
<b>Totals</b>			<b>\$2,000</b>	<b>\$4,000</b>	<b>\$2,000</b>	<b>\$2,766,000</b>	<b>\$2,774,000</b>

### Notes

Source of State Funds: State transportation revenues. Source of Local Funds: City of Springfield 1/8-cent transportation sales tax. \$100,000 STP-Urban attributable to Greene County.

<b>Prior Cost</b>	\$73,000
<b>Future Cost</b>	\$0
<b>Total Cost</b>	\$2,847,000



# Transportation Improvement Program - FY 2015-2018

Project Detail by Section and Project Number with Map

## D) Bicycle & Pedestrian Section

**TIP #** EN1306      **JEFFERSON AVENUE STREETSCAPE PHASE 1**

**Route** Jefferson Avenue

**From** Phelps Street

**To** Water Street

**Location/Agency**

**Federal Agency**

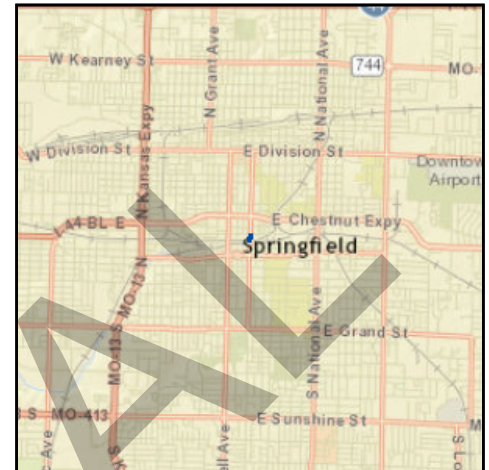
**Responsible Agency** City of Springfield

**Federal Funding Category** TE

**MoDOT Funding Category** None

**AC Year of Conv.**

**STIP #**



### Project Description

Streetscape improvements on the east and west sides of Jefferson Avenue from Phelps to Water, including an overlay on Jefferson.

Fund Code	Source	Phase	FY2015	FY2016	FY2017	FY2018	Total
FHWA (TE)	Federal	CON	\$320,000	\$0	\$0	\$0	\$320,000
LOCAL	Local	CON	\$80,000	\$0	\$0	\$0	\$80,000
<b>Totals</b>			<b>\$400,000</b>	<b>\$0</b>	<b>\$0</b>	<b>\$0</b>	<b>\$400,000</b>

### Notes

Source of Local Funds: City of Springfield 1/4-cent Capital Improvement Program

<b>Prior Cost</b>	\$0
<b>Future Cost</b>	\$0
<b>Total Cost</b>	\$400,000



# Transportation Improvement Program - FY 2015-2018

Project Detail by Section and Project Number with Map

## D) Bicycle & Pedestrian Section

**TIP #** EN1306      **JEFFERSON AVENUE STREETSCAPE PHASE 1**

**Route**      Jefferson Avenue

**From**      Phelps Street

**To**      Water Street

**Location/Agency**      City of Springfield

**Federal Agency**      FHWA

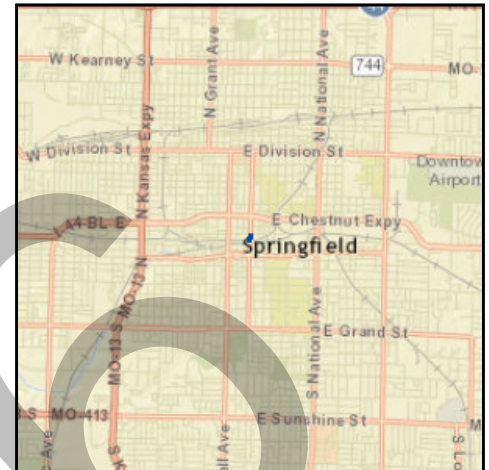
**Responsible Agency**      City of Springfield

**Federal Funding Category**      TE

**MoDOT Funding Category**      None

**AC Year of Conv.**

**STIP #**      5921801



### Project Description

Streetscape improvements on the east and west sides of Jefferson Avenue from Phelps to Water, including an overlay on Jefferson.

Fund Code	Source	Phase	FY2015	FY2016	FY2017	FY2018	Total
FHWA (TE)	Federal	CON	\$0	\$320,000	\$0	\$0	\$320,000
LOCAL	Local	CON	\$0	\$80,000	\$0	\$0	\$80,000
<b>Totals</b>			<b>\$0</b>	<b>\$400,000</b>	<b>\$0</b>	<b>\$0</b>	<b>\$400,000</b>

### Notes

Source of Local Funds: City of Springfield 1/4-cent Capital Improvement Program

<b>Prior Cost</b>	\$0
<b>Future Cost</b>	\$0
<b>Total Cost</b>	\$400,000



# Transportation Improvement Program - FY 2015-2018

Project Detail by Section and Project Number with Map

## D) Bicycle & Pedestrian Section

**TIP # EN1401** JACKSON AND MAIN STREET SIDEWALKS

**Route** BUSINESS 160

**From** MAIN ST

**To** EAST END OF BUSINESS DISTRICT

**Location/Agency**

**Federal Agency**

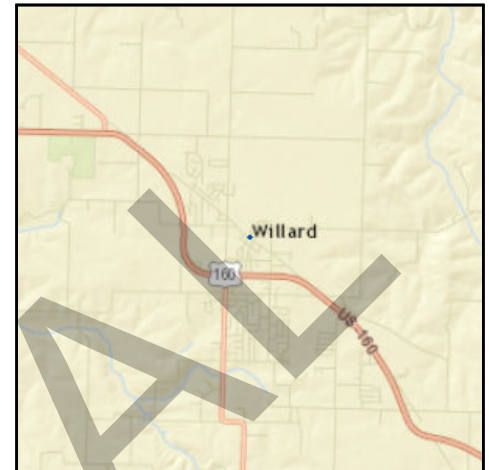
**Responsible Agency** City of Willard

**Federal Funding Category** STP-U

**MoDOT Funding Category**

**AC Year of Conv.**

**STIP #**



### Project Description

Sidewalk replacement along Jackson St. and Main St.

Fund Code	Source	Phase	FY2015	FY2016	FY2017	FY2018	Total
FHWA (STP-U)	Federal	ENG	\$16,926	\$0	\$0	\$0	\$16,926
LOCAL	Local	ENG	\$4,231	\$0	\$0	\$0	\$4,231
FHWA (STP-U)	Federal	CON	\$31,074	\$0	\$0	\$0	\$31,074
LOCAL	Local	CON	\$7,769	\$0	\$0	\$0	\$7,769
<b>Totals</b>			<b>\$60,000</b>	<b>\$0</b>	<b>\$0</b>	<b>\$0</b>	<b>\$60,000</b>

### Notes

<b>Prior Cost</b>	\$0
<b>Future Cost</b>	\$0
<b>Total Cost</b>	\$60,000





# Transportation Improvement Program - FY 2015-2018

## Project Detail by Section and Project Number with Map

### D) Bicycle & Pedestrian Section

**TIP #** EN1401 JACKSON AND MAIN STREET SIDEWALKS

**Route** BUSINESS 160

**From** MAIN ST

**To** EAST END OF BUSINESS DISTRICT

**Location/Agency** City of Willard

**Federal Agency** FHWA

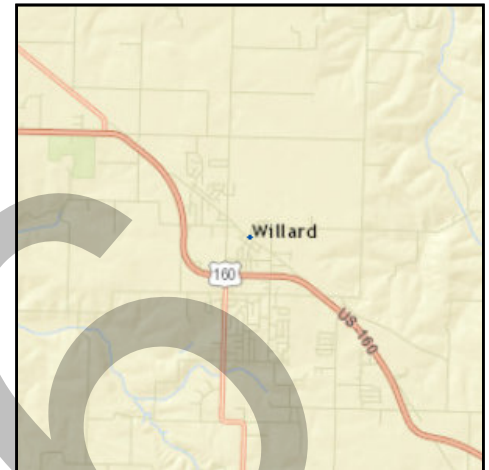
**Responsible Agency** City of Willard

**Federal Funding Category** STP-U

**MoDOT Funding Category** None

**AC Year of Conv.**

**STIP #** 5944802



#### Project Description

Sidewalk replacement along Jackson St. and Main St.

Fund Code	Source	Phase	FY2015	FY2016	FY2017	FY2018	Total
FHWA (STP-U)	Federal	ENG	\$12,466	\$4,460	\$0	\$0	\$16,926
LOCAL	Local	ENG	\$3,117	\$1,114	\$0	\$0	\$4,231
FHWA (STP-U)	Federal	CON	\$0	\$31,074	\$0	\$0	\$31,074
LOCAL	Local	CON	\$0	\$7,769	\$0	\$0	\$7,769
<b>Totals</b>			<b>\$15,583</b>	<b>\$44,417</b>	<b>\$0</b>	<b>\$0</b>	<b>\$60,000</b>

#### Notes

<b>Prior Cost</b>	\$0
<b>Future Cost</b>	\$0
<b>Total Cost</b>	\$60,000





## Transportation Improvement Program - FY 2015-2018

### Project Detail by Section and Project Number with Map

#### D) Bicycle & Pedestrian Section

**TIP #** EN1503      **FINLEY RIVER PARK CONNECTION**

**Route** North 4th and East Parkside

**From** Neil Grubagh Park

**To** Finley River Park

**Location/Agency**

**Federal Agency**

**Responsible Agency** City of Ozark

**Federal Funding Category** TAP

**MoDOT Funding Category** N/A

**AC Year of Conv.**

**STIP #**



#### Project Description

Sidewalk connection between Finley River Park and Neil Grubagh Park, including crosswalks and curb ramps.

Fund Code	Source	Phase	FY2015	FY2016	FY2017	FY2018	Total
FHWA (TAP)	Federal	ENG	\$37,040	\$0	\$0	\$0	\$37,040
LOCAL	Local	ENG	\$9,260	\$0	\$0	\$0	\$9,260
FHWA (TAP)	Federal	CON	\$85,926	\$0	\$0	\$0	\$85,926
LOCAL	Local	CON	\$21,482	\$0	\$0	\$0	\$21,482
<b>Totals</b>			<b>\$153,708</b>	<b>\$0</b>	<b>\$0</b>	<b>\$0</b>	<b>\$153,708</b>

#### Notes

Source of Local Funds: Ozark School District and City of Ozark general fund.

<b>Prior Cost</b>	\$0
<b>Future Cost</b>	\$0
<b>Total Cost</b>	\$153,708



# Transportation Improvement Program - FY 2015-2018

Project Detail by Section and Project Number with Map

## D) Bicycle & Pedestrian Section

**TIP # EN1503** FINLEY RIVER PARK CONNECTION

**Route** North 4th and East Parkside

**From** Neil Grubagh Park

**To** Finley River Park

**Location/Agency** City of Ozark

**Federal Agency** FHWA

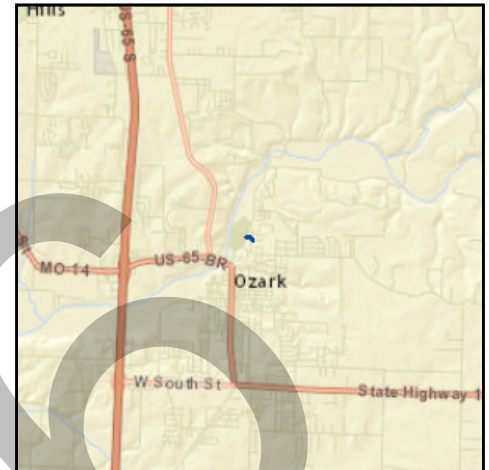
**Responsible Agency** City of Ozark

**Federal Funding Category** TAP

**MoDOT Funding Category** None

**AC Year of Conv.**

**STIP #** 9901811



### Project Description

Sidewalk connection between Finley River Park and Neil Grubagh Park, including crosswalks and curb ramps.

Fund Code	Source	Phase	FY2015	FY2016	FY2017	FY2018	Total
FHWA (TAP)	Federal	ENG	\$18,441	\$18,599	\$0	\$0	\$37,040
LOCAL	Local	ENG	\$4,610	\$4,650	\$0	\$0	\$9,260
FHWA (TAP)	Federal	CON	\$0	\$85,926	\$0	\$0	\$85,926
LOCAL	Local	CON	\$0	\$21,482	\$0	\$0	\$21,482
<b>Totals</b>			<b>\$23,051</b>	<b>\$130,657</b>	<b>\$0</b>	<b>\$0</b>	<b>\$153,708</b>

### Notes

Source of Local Funds: Ozark School District and City of Ozark general fund.

<b>Prior Cost</b>	\$0
<b>Future Cost</b>	\$0
<b>Total Cost</b>	\$153,708



# Transportation Improvement Program - FY 2015-2018

## Project Detail by Section and Project Number with Map

### D) Bicycle & Pedestrian Section

**TIP # EN1504** HARTLEY ROAD SIDEWALKS

**Route** East Hartley Road

**From** South 18th Street

**To** Ozark East Elementary

**Location/Agency**

**Federal Agency**

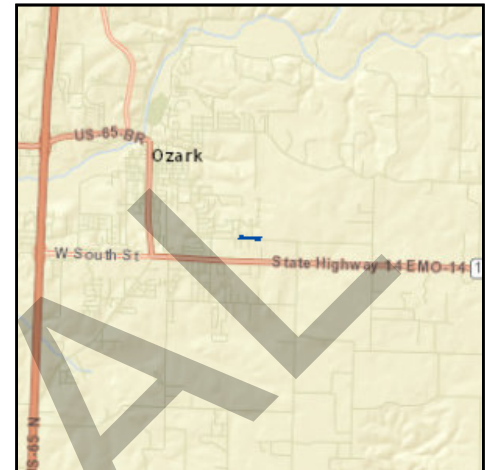
**Responsible Agency** City of Ozark

**Federal Funding Category** TAP

**MoDOT Funding Category** N/A

**AC Year of Conv.**

**STIP #**



#### Project Description

Sidewalk on the north side of East Hartley Road from South 18th Street to Ozark East Elementary, including ramps and crosswalks.

Fund Code	Source	Phase	FY2015	FY2016	FY2017	FY2018	Total
FHWA (TAP)	Federal	ENG	\$45,611	\$0	\$0	\$0	\$45,611
LOCAL	Local	ENG	\$11,403	\$0	\$0	\$0	\$11,403
FHWA (TAP)	Federal	CON	\$96,024	\$0	\$0	\$0	\$96,024
LOCAL	Local	CON	\$24,006	\$0	\$0	\$0	\$24,006
<b>Totals</b>			<b>\$177,044</b>	<b>\$0</b>	<b>\$0</b>	<b>\$0</b>	<b>\$177,044</b>

#### Notes

Source of Local Funds: Ozark School District and City of Ozark general funds.

<b>Prior Cost</b>	\$0
<b>Future Cost</b>	\$0
<b>Total Cost</b>	\$177,044



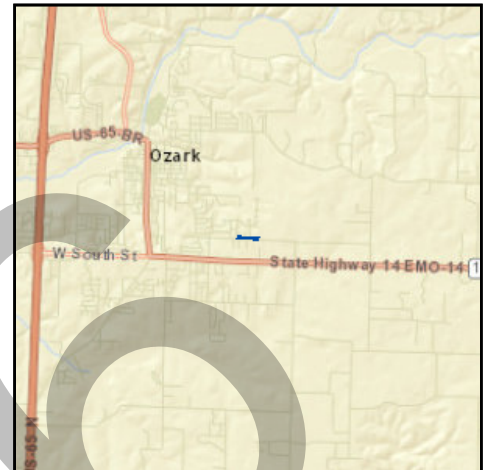
## Transportation Improvement Program - FY 2015-2018

### Project Detail by Section and Project Number with Map

#### D) Bicycle & Pedestrian Section

**TIP # EN1504** HARTLEY ROAD SIDEWALKS

**Route** East Hartley Road  
**From** South 18th Street  
**To** Ozark East Elementary  
**Location/Agency** City of Ozark  
**Federal Agency** FHWA  
**Responsible Agency** City of Ozark  
**Federal Funding Category** TAP  
**MoDOT Funding Category** N/A  
**AC Year of Conv.**  
**STIP #** 9901812



#### Project Description

Sidewalk on the north side of East Hartley Road from South 18th Street to Ozark East Elementary, including ramps and crosswalks.

Fund Code	Source	Phase	FY2015	FY2016	FY2017	FY2018	Total
FHWA (TAP)	Federal	ENG	\$21,569	\$24,042	\$0	\$0	\$45,611
LOCAL	Local	ENG	\$5,392	\$6,011	\$0	\$0	\$11,403
FHWA (TAP)	Federal	CON	\$0	\$96,024	\$0	\$0	\$96,024
LOCAL	Local	CON	\$0	\$24,006	\$0	\$0	\$24,006
<b>Totals</b>			<b>\$26,961</b>	<b>\$150,083</b>	<b>\$0</b>	<b>\$0</b>	<b>\$177,044</b>

#### Notes

Source of Local Funds: Ozark School District and City of Ozark general funds.

<b>Prior Cost</b>	\$0
<b>Future Cost</b>	\$0
<b>Total Cost</b>	\$177,044



## Transportation Improvement Program - FY 2015-2018

### Project Detail by Section and Project Number with Map

#### D) Bicycle & Pedestrian Section

**TIP #** EN1505      **MCGUFFEY PARK CONNECTION SIDEWALKS**

**Route** W. Ivy Creek Dr., N. 11th St., N. 12th St.

**From** McGuffey Park Subdivision

**To** Ozark Upper Elementary

**Location/Agency**

**Federal Agency**

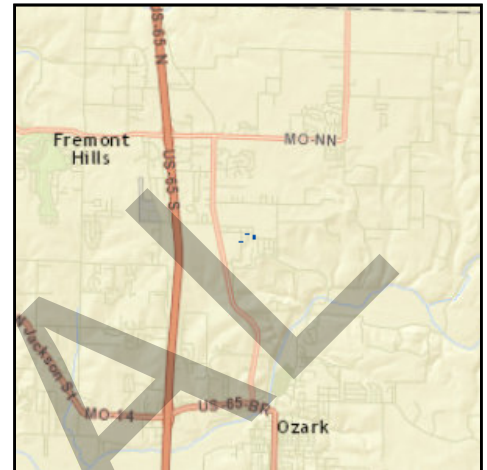
**Responsible Agency** City of Ozark

**Federal Funding Category** TAP

**MoDOT Funding Category** N/A

**AC Year of Conv.**

**STIP #**



#### Project Description

Sidewalk along three streets in the McGuffey Park Subdivision to create an uninterrupted route to Ozark Upper Elementary School, including West Ivy Creek Drive, North 11th Street, and North 12th Street.

Fund Code	Source	Phase	FY2015	FY2016	FY2017	FY2018	Total
FHWA (TAP)	Federal	ENG	\$18,394	\$0	\$0	\$0	\$18,394
LOCAL	Local	ENG	\$4,599	\$0	\$0	\$0	\$4,599
FHWA (TAP)	Federal	CON	\$21,640	\$0	\$0	\$0	\$21,640
LOCAL	Local	CON	\$5,410	\$0	\$0	\$0	\$5,410
<b>Totals</b>			<b>\$50,043</b>	<b>\$0</b>	<b>\$0</b>	<b>\$0</b>	<b>\$50,043</b>

#### Notes

Source of Local Funds: Ozark School District and City of Ozark general fund.

<b>Prior Cost</b>	\$0
<b>Future Cost</b>	\$0
<b>Total Cost</b>	\$50,043



# Transportation Improvement Program - FY 2015-2018

## Project Detail by Section and Project Number with Map

### D) Bicycle & Pedestrian Section

**TIP # EN1505** MCGUFFEY PARK CONNECTION SIDEWALKS

**Route** W. Ivy Creek Dr., N. 11th St., N. 12th St.

**From** McGuffey Park Subdivision

**To** Ozark Upper Elementary

**Location/Agency** City of Ozark

**Federal Agency** FHWA

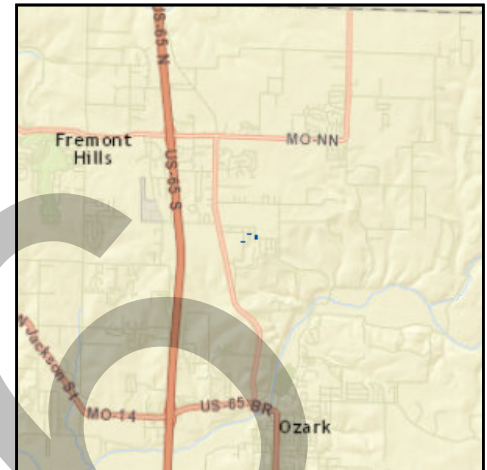
**Responsible Agency** City of Ozark

**Federal Funding Category** TAP

**MoDOT Funding Category** N/A

**AC Year of Conv.**

**STIP #** 9901813



#### Project Description

Sidewalk along three streets in the McGuffey Park Subdivision to create an uninterrupted route to Ozark Upper Elementary School, including West Ivy Creek Drive, North 11th Street, and North 12th Street.

Fund Code	Source	Phase	FY2015	FY2016	FY2017	FY2018	Total
FHWA (TAP)	Federal	ENG	\$10,815	\$7,579	\$0	\$0	\$18,394
LOCAL	Local	ENG	\$2,704	\$1,895	\$0	\$0	\$4,599
FHWA (TAP)	Federal	CON	\$0	\$21,640	\$0	\$0	\$21,640
LOCAL	Local	CON	\$0	\$5,410	\$0	\$0	\$5,410
<b>Totals</b>			<b>\$13,519</b>	<b>\$36,524</b>	<b>\$0</b>	<b>\$0</b>	<b>\$50,043</b>

#### Notes

Source of Local Funds: Ozark School District and City of Ozark general fund.

<b>Prior Cost</b>	\$0
<b>Future Cost</b>	\$0
<b>Total Cost</b>	\$50,043



# Transportation Improvement Program - FY 2015-2018

Project Detail by Section and Project Number with Map

## D) Bicycle & Pedestrian Section

**TIP #** EN1506      **ROUTE 174 MULTI-USE TRAIL PHASE I**

**Route**      Route 174

**From**      Main

**To**      Lindsey

**Location/Agency**

**Federal Agency**

**Responsible Agency**      City of Republic

**Federal Funding Category** TAP

**MoDOT Funding Category** N/A

**AC Year of Conv.**

**STIP #**



### Project Description

Asphalt path on the north side of Route 174 between Main and Lindsey.

Fund Code	Source	Phase	FY2015	FY2016	FY2017	FY2018	Total
FHWA (TAP)	Federal	ENG	\$24,072	\$0	\$0	\$0	\$24,072
LOCAL	Local	ENG	\$66,199	\$0	\$0	\$0	\$66,199
LOCAL	Local	ROW	\$10,323	\$0	\$0	\$0	\$10,323
FHWA (TAP)	Federal	CON	\$225,928	\$0	\$0	\$0	\$225,928
LOCAL	Local	CON	\$64,654	\$0	\$0	\$0	\$64,654
<b>Totals</b>			<b>\$391,176</b>	<b>\$0</b>	<b>\$0</b>	<b>\$0</b>	<b>\$391,176</b>

### Notes

Source of Local Funds: City of Republic 1/2-cent Transportation Sales Tax and other local transportation revenue.

<b>Prior Cost</b>	\$0
<b>Future Cost</b>	\$0
<b>Total Cost</b>	\$391,176





# Transportation Improvement Program - FY 2015-2018

Project Detail by Section and Project Number with Map

## D) Bicycle & Pedestrian Section

**TIP #** EN1506      **ROUTE 174 MULTI-USE TRAIL PHASE I**

**Route**      Route 174

**From**      Main

**To**      Lindsey

**Location/Agency**      City of Republic

**Federal Agency**      FHWA

**Responsible Agency**      City of Republic

**Federal Funding Category**      TAP

**MoDOT Funding Category**      N/A

**AC Year of Conv.**

**STIP #**      6900809



### Project Description

Asphalt path on the north side of Route 174 between Main and Lindsey.

Fund Code	Source	Phase	FY2015	FY2016	FY2017	FY2018	Total
FHWA (TAP)	Federal	ENG	\$44,535	\$0	\$0	\$0	\$44,535
LOCAL	Local	ENG	\$11,134	\$55,065	\$0	\$0	\$66,199
LOCAL	Local	ROW	\$0	\$10,323	\$0	\$0	\$10,323
FHWA (TAP)	Federal	CON	\$0	\$205,465	\$0	\$0	\$205,465
LOCAL	Local	CON	\$0	\$64,654	\$0	\$0	\$64,654
<b>Totals</b>			<b>\$55,669</b>	<b>\$335,507</b>	<b>\$0</b>	<b>\$0</b>	<b>\$391,176</b>

### Notes

Source of Local Funds: City of Republic 1/2-cent Transportation Sales Tax and other local transportation revenue.

<b>Prior Cost</b>	\$0
<b>Future Cost</b>	\$0
<b>Total Cost</b>	\$391,176



# Transportation Improvement Program - FY 2015-2018

Project Detail by Section and Project Number with Map

## D) Bicycle & Pedestrian Section

**TIP # EN1507** SOUTH DRY SAC TRAIL CONNECTIONS

**Route** South Dry Sac Trail

**From** Fulbright

**To** David C. Murray Park

**Location/Agency**

**Federal Agency**

**Responsible Agency** Springfield-Greene County Parks

**Federal Funding Category** TAP

**MoDOT Funding Category** N/A

**AC Year of Conv.**

**STIP #**



### Project Description

Missing connections on South Dry Sac Trail between Fulbright and David C. Murray Park.

Fund Code	Source	Phase	FY2015	FY2016	FY2017	FY2018	Total
FHWA (TAP)	Federal	ENG	\$14,400	\$0	\$0	\$0	\$14,400
LOCAL	Local	ENG	\$3,600	\$0	\$0	\$0	\$3,600
FHWA (TAP)	Federal	CON	\$178,280	\$0	\$0	\$0	\$178,280
LOCAL	Local	CON	\$44,570	\$0	\$0	\$0	\$44,570
<b>Totals</b>			<b>\$240,850</b>	<b>\$0</b>	<b>\$0</b>	<b>\$0</b>	<b>\$240,850</b>

### Notes

Source of Local Funding: Greene County, Springfield-Greene County Park Board, Ozark Greenways.

<b>Prior Cost</b>	\$0
<b>Future Cost</b>	\$0
<b>Total Cost</b>	\$240,850



# Transportation Improvement Program - FY 2015-2018

Project Detail by Section and Project Number with Map

## D) Bicycle & Pedestrian Section

**TIP # EN1507** SOUTH DRY SAC TRAIL CONNECTIONS

**Route** South Dry Sac Trail

**From** Fulbright

**To** David C. Murray Park

**Location/Agency** Greene County

**Federal Agency** FHWA

**Responsible Agency** Springfield-Greene County Parks

**Federal Funding Category** TAP

**MoDOT Funding Category** N/A

**AC Year of Conv.**

**STIP #** 5901806



### Project Description

Missing connections on South Dry Sac Trail between Fulbright and David C. Murray Park.

Fund Code	Source	Phase	FY2015	FY2016	FY2017	FY2018	Total
FHWA (TAP)	Federal	ENG	\$0	\$14,400	\$0	\$0	\$14,400
LOCAL	Local	ENG	\$0	\$3,600	\$0	\$0	\$3,600
FHWA (TAP)	Federal	CON	\$0	\$178,280	\$0	\$0	\$178,280
LOCAL	Local	CON	\$0	\$44,570	\$0	\$0	\$44,570
<b>Totals</b>			<b>\$0</b>	<b>\$240,850</b>	<b>\$0</b>	<b>\$0</b>	<b>\$240,850</b>

### Notes

Source of Local Funding: Greene County, Springfield-Greene County Park Board, Ozark Greenways.

<b>Prior Cost</b>	\$0
<b>Future Cost</b>	\$0
<b>Total Cost</b>	\$240,850



# Transportation Improvement Program - FY 2015-2018

Project Detail by Section and Project Number with Map

## D) Bicycle & Pedestrian Section

**TIP #** EN1508 **COLLEGE STREET PHASE III**

**Route** Grant and College

**From** Grant Avenue

**To** College Street

**Location/Agency**

**Federal Agency**

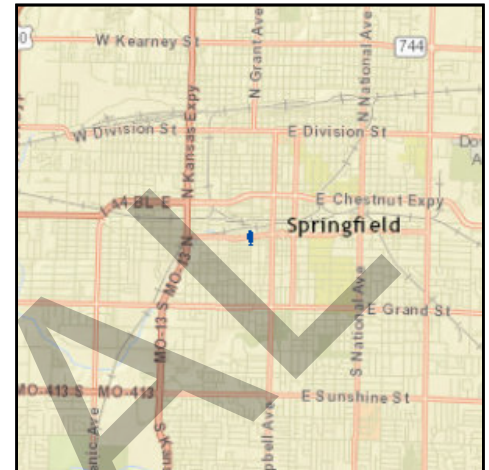
**Responsible Agency** City of Springfield

**Federal Funding Category** TAP

**MoDOT Funding Category** N/A

**AC Year of Conv.**

**STIP #**



### Project Description

College Street Phase III - Sidewalk improvements on the east and west sides of Grant from Olive to Walnut, and College at Grant, including the intersection.

Fund Code	Source	Phase	FY2015	FY2016	FY2017	FY2018	Total
FHWA (TAP)	Federal	CON	\$250,000	\$0	\$0	\$0	\$250,000
LOCAL	Local	CON	\$179,000	\$0	\$0	\$0	\$179,000
<b>Totals</b>			<b>\$429,000</b>	<b>\$0</b>	<b>\$0</b>	<b>\$0</b>	<b>\$429,000</b>

### Notes

Source of Local Funds: City of Springfield 1/4-cent Capital Improvement Program Sales Tax.

<b>Prior Cost</b>	\$0
<b>Future Cost</b>	\$0
<b>Total Cost</b>	\$429,000



# Transportation Improvement Program - FY 2015-2018

Project Detail by Section and Project Number with Map

## D) Bicycle & Pedestrian Section

**TIP #** EN1508 **COLLEGE STREET PHASE III**

**Route** Grant and College

**From** Grant Avenue

**To** College Street

**Location/Agency** City of Springfield

**Federal Agency** FHWA

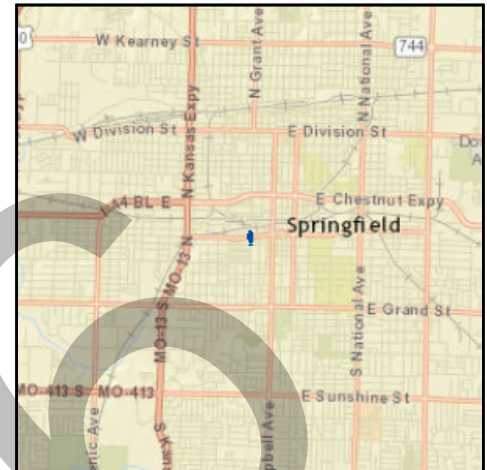
**Responsible Agency** City of Springfield

**Federal Funding Category** TAP

**MoDOT Funding Category** N/A

**AC Year of Conv.**

**STIP #** 5911802



### Project Description

College Street Phase III - Sidewalk improvements on the east and west sides of Grant from Olive to Walnut, and College at Grant, including the intersection.

Fund Code	Source	Phase	FY2015	FY2016	FY2017	FY2018	Total
FHWA (TAP)	Federal	CON	\$0	\$250,000	\$0	\$0	\$250,000
LOCAL	Local	CON	\$0	\$179,000	\$0	\$0	\$179,000
<b>Totals</b>			<b>\$0</b>	<b>\$429,000</b>	<b>\$0</b>	<b>\$0</b>	<b>\$429,000</b>

### Notes

Source of Local Funds: City of Springfield 1/4-cent Capital Improvement Program Sales Tax.

<b>Prior Cost</b>	\$0
<b>Future Cost</b>	\$0
<b>Total Cost</b>	\$429,000



# Transportation Improvement Program - FY 2015-2018

Project Detail by Section and Project Number with Map

## D) Bicycle & Pedestrian Section

**TIP # EN1509** MAIN AVENUE SIDEWALKS AND BICYCLE TRACK

**Route** Main Avenue

**From** College Street

**To** Olive Street

**Location/Agency**

**Federal Agency**

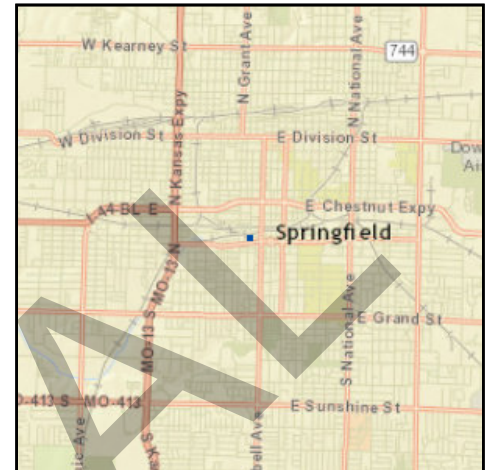
**Responsible Agency** City of Springfield

**Federal Funding Category** TAP

**MoDOT Funding Category** N/A

**AC Year of Conv.**

**STIP #**



### Project Description

Sidewalk on the east and west sides of Main Avenue and a separate bicycle track on the west side of Main Avenue from College Street to just north of Olive.

Fund Code	Source	Phase	FY2015	FY2016	FY2017	FY2018	Total
FHWA (TAP)	Federal	CON	\$250,000	\$0	\$0	\$0	\$250,000
LOCAL	Local	CON	\$280,000	\$0	\$0	\$0	\$280,000
<b>Totals</b>			<b>\$530,000</b>	<b>\$0</b>	<b>\$0</b>	<b>\$0</b>	<b>\$530,000</b>

### Notes

Source of Local Funds: City Utilities and City of Springfield 1/4-cent Capital Improvement Program Sales Tax.

<b>Prior Cost</b>	\$0
<b>Future Cost</b>	\$0
<b>Total Cost</b>	\$530,000





# Transportation Improvement Program - FY 2015-2018

Project Detail by Section and Project Number with Map

## D) Bicycle & Pedestrian Section

**TIP # EN1509** MAIN AVENUE SIDEWALKS AND BICYCLE TRACK

**Route** Main Avenue

**From** College Street

**To** Olive Street

**Location/Agency** City of Springfield

**Federal Agency** FHWA

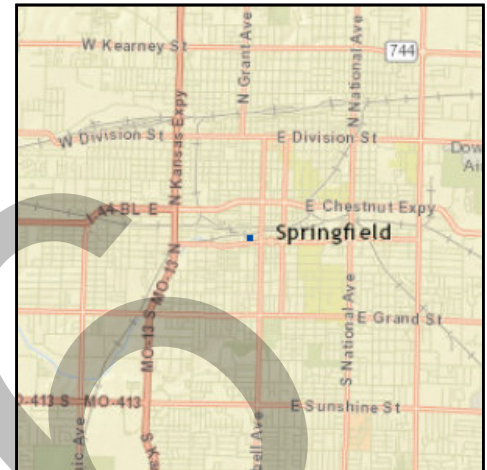
**Responsible Agency** City of Springfield

**Federal Funding Category** TAP

**MoDOT Funding Category** N/A

**AC Year of Conv.**

**STIP #** 5901805



### Project Description

Sidewalk on the east and west sides of Main Avenue and a separate bicycle track on the west side of Main Avenue from College Street to just north of Olive.

Fund Code	Source	Phase	FY2015	FY2016	FY2017	FY2018	Total
FHWA (TAP)	Federal	CON	\$0	\$250,000	\$0	\$0	\$250,000
LOCAL	Local	CON	\$0	\$280,000	\$0	\$0	\$280,000
<b>Totals</b>			<b>\$0</b>	<b>\$530,000</b>	<b>\$0</b>	<b>\$0</b>	<b>\$530,000</b>

### Notes

Source of Local Funds: City Utilities and City of Springfield 1/4-cent Capital Improvement Program Sales Tax.

<b>Prior Cost</b>	\$0
<b>Future Cost</b>	\$0
<b>Total Cost</b>	\$530,000





## Transportation Improvement Program - FY 2015-2018

Project Detail by Section and Project Number with Map

### D) Bicycle & Pedestrian Section

**TIP # EN1510** STRAFFORD SIDEWALKS ON MADISON, JEFFERSON, AND PINE

**Route** Madison, Washington, and Pine

**From** Various

**To** Various

**Location/Agency**

**Federal Agency**

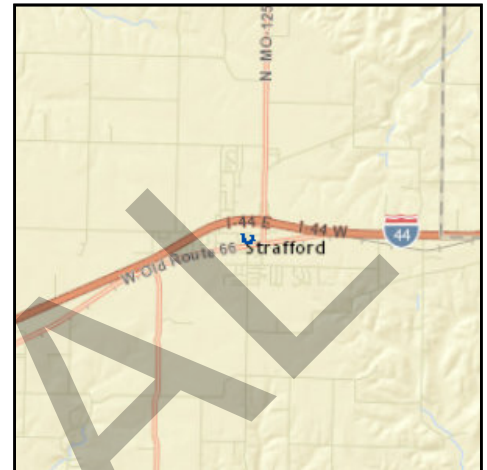
**Responsible Agency** City of Strafford

**Federal Funding Category** TAP

**MoDOT Funding Category** N/A

**AC Year of Conv.**

**STIP #**



#### Project Description

New and Reconstructed Sidewalk in downtown Strafford on Madison, Jefferson, and Pine Streets.

Fund Code	Source	Phase	FY2015	FY2016	FY2017	FY2018	Total
FHWA (TAP)	Federal	ENG	\$56,194	\$0	\$0	\$0	\$56,194
LOCAL	Local	ENG	\$14,048	\$0	\$0	\$0	\$14,048
FHWA (TAP)	Federal	CON	\$193,806	\$0	\$0	\$0	\$193,806
LOCAL	Local	CON	\$48,452	\$0	\$0	\$0	\$48,452
<b>Totals</b>			<b>\$312,500</b>	<b>\$0</b>	<b>\$0</b>	<b>\$0</b>	<b>\$312,500</b>

#### Notes

Source of Local Funds: City of Strafford and Strafford Schools.

<b>Prior Cost</b>	\$0
<b>Future Cost</b>	\$0
<b>Total Cost</b>	\$312,500



## Transportation Improvement Program - FY 2015-2018

Project Detail by Section and Project Number with Map

### D) Bicycle & Pedestrian Section

**TIP # EN1510** STRAFFORD SIDEWALKS ON MADISON, JEFFERSON, AND PINE

**Route** Madison, Washington, and Pine

**From** Various

**To** Various

**Location/Agency** City of Strafford

**Federal Agency** FHWA

**Responsible Agency** City of Strafford

**Federal Funding Category** TAP

**MoDOT Funding Category** N/A

**AC Year of Conv.**

**STIP #** 9900843



#### Project Description

New and Reconstructed Sidewalk in downtown Strafford on Madison, Jefferson, and Pine Streets.

Fund Code	Source	Phase	FY2015	FY2016	FY2017	FY2018	Total
FHWA (TAP)	Federal	ENG	\$27,131	\$29,063	\$0	\$0	\$56,194
LOCAL	Local	ENG	\$6,783	\$7,265	\$0	\$0	\$14,048
FHWA (TAP)	Federal	CON	\$0	\$193,806	\$0	\$0	\$193,806
LOCAL	Local	CON	\$0	\$48,452	\$0	\$0	\$48,452
<b>Totals</b>			<b>\$33,914</b>	<b>\$278,586</b>	<b>\$0</b>	<b>\$0</b>	<b>\$312,500</b>

#### Notes

Source of Local Funds: City of Strafford and Strafford Schools.

<b>Prior Cost</b>	\$0
<b>Future Cost</b>	\$0
<b>Total Cost</b>	\$312,500



## Transportation Improvement Program - FY 2015-2018

Project Detail by Section and Project Number with Map

### D) Bicycle & Pedestrian Section

**TIP # EN1511** STRAFFORD SIDEWALKS ON MCABE AND PINE

**Route** Pine and McCabe

**From** Various

**To** Various

**Location/Agency**

**Federal Agency**

**Responsible Agency** Strafford Public Schools

**Federal Funding Category** TAP

**MoDOT Funding Category** N/A

**AC Year of Conv.**

**STIP #**



#### Project Description

New sidewalk constructed on Pine and McCabe Streets in downtown Strafford to connect downtown Strafford and the existing Strafford Schools Campus to the new Elementary School under construction.

Fund Code	Source	Phase	FY2015	FY2016	FY2017	FY2018	Total
FHWA (TAP)	Federal	ENG	\$55,425	\$0	\$0	\$0	\$55,425
LOCAL	Local	ENG	\$13,856	\$0	\$0	\$0	\$13,856
FHWA (TAP)	Federal	CON	\$104,575	\$0	\$0	\$0	\$104,575
LOCAL	Local	CON	\$26,144	\$0	\$0	\$0	\$26,144
<b>Totals</b>			<b>\$200,000</b>	<b>\$0</b>	<b>\$0</b>	<b>\$0</b>	<b>\$200,000</b>

#### Notes

Source of Local Funds: Strafford School District and City of Strafford.

<b>Prior Cost</b>	\$0
<b>Future Cost</b>	\$0
<b>Total Cost</b>	\$200,000



## Transportation Improvement Program - FY 2015-2018

Project Detail by Section and Project Number with Map

### D) Bicycle & Pedestrian Section

**TIP # EN1511** STRAFFORD SIDEWALKS ON MCABE AND PINE

**Route** Pine and McCabe

**From** Various

**To** Various

**Location/Agency** City of Strafford

**Federal Agency** FHWA

**Responsible Agency** Strafford Public Schools

**Federal Funding Category** TAP

**MoDOT Funding Category** N/A

**AC Year of Conv.**

**STIP #** 9900845



#### Project Description

New sidewalk constructed on Pine and McCabe Streets in downtown Strafford to connect downtown Strafford and the existing Strafford Schools Campus to the new Elementary School under construction.

Fund Code	Source	Phase	FY2015	FY2016	FY2017	FY2018	Total
FHWA (TAP)	Federal	ENG	\$26,139	\$29,286	\$0	\$0	\$55,425
LOCAL	Local	ENG	\$6,535	\$7,321	\$0	\$0	\$13,856
FHWA (TAP)	Federal	CON	\$0	\$104,575	\$0	\$0	\$104,575
LOCAL	Local	CON	\$0	\$26,144	\$0	\$0	\$26,144
<b>Totals</b>			<b>\$32,674</b>	<b>\$167,326</b>	<b>\$0</b>	<b>\$0</b>	<b>\$200,000</b>

#### Notes

Source of Local Funds: Strafford School District and City of Strafford.

<b>Prior Cost</b>	\$0
<b>Future Cost</b>	\$0
<b>Total Cost</b>	\$200,000



# Transportation Improvement Program - FY 2015-2018

Project Detail by Section and Project Number with Map

## D) Bicycle & Pedestrian Section

**TIP #** EN1512 **WILLARD SCHOOL SIDEWALKS PHASE I, KIME**

**Route** Kime Street

**From** Miller Road

**To** Willard East Elementary

**Location/Agency**

**Federal Agency**

**Responsible Agency** Willard Public Schools

**Federal Funding Category** TAP

**MoDOT Funding Category** N/A

**AC Year of Conv.**

**STIP #**



### Project Description

Sidewalks on the south side of Kime Street (Missouri Route O) from the intersection of Miller Road to the east driveway of Willard East Elementary.

Fund Code	Source	Phase	FY2015	FY2016	FY2017	FY2018	Total
FHWA (TAP)	Federal	ENG	\$26,614	\$0	\$0	\$0	\$26,614
LOCAL	Local	ENG	\$6,654	\$0	\$0	\$0	\$6,654
FHWA (TAP)	Federal	CON	\$106,466	\$0	\$0	\$0	\$106,466
LOCAL	Local	CON	\$26,616	\$0	\$0	\$0	\$26,616
<b>Totals</b>			<b>\$166,350</b>	<b>\$0</b>	<b>\$0</b>	<b>\$0</b>	<b>\$166,350</b>

### Notes

Source of Local Funds: Willard School District Capital Improvement Fund and City of Willard Capital Improvement Fund.

<b>Prior Cost</b>	\$0
<b>Future Cost</b>	\$0
<b>Total Cost</b>	\$166,350



## Transportation Improvement Program - FY 2015-2018

Project Detail by Section and Project Number with Map

### D) Bicycle & Pedestrian Section

**TIP # EN1512** WILLARD SCHOOL SIDEWALKS PHASE I, KIME

**Route** Kime Street  
**From** Miller Road  
**To** Willard East Elementary  
**Location/Agency** City of Willard  
**Federal Agency** FHWA  
**Responsible Agency** Willard Public Schools  
**Federal Funding Category** TAP  
**MoDOT Funding Category** N/A  
**AC Year of Conv.**  
**STIP #** 9900856



#### Project Description

Sidewalks on the south side of Kime Street (Missouri Route O) from the intersection of Miller Road to the east driveway of Willard East Elementary.

Fund Code	Source	Phase	FY2015	FY2016	FY2017	FY2018	Total
FHWA (TAP)	Federal	ENG	\$0	\$26,614	\$0	\$0	\$26,614
LOCAL	Local	ENG	\$0	\$6,654	\$0	\$0	\$6,654
FHWA (TAP)	Federal	CON	\$0	\$106,466	\$0	\$0	\$106,466
LOCAL	Local	CON	\$0	\$26,616	\$0	\$0	\$26,616
<b>Totals</b>			<b>\$0</b>	<b>\$166,350</b>	<b>\$0</b>	<b>\$0</b>	<b>\$166,350</b>

#### Notes

Source of Local Funds: Willard School District Capital Improvement Fund and City of Willard Capital Improvement Fund.

<b>Prior Cost</b>	\$0
<b>Future Cost</b>	\$0
<b>Total Cost</b>	\$166,350



## Transportation Improvement Program - FY 2015-2018

Project Detail by Section and Project Number with Map

### D) Bicycle & Pedestrian Section

**TIP #** EN1513      **WEAVER ROAD SIDEWALKS**

**Route** Weaver

**From** Wilson's Creek Intermediate

**To** FF

**Location/Agency**

**Federal Agency**

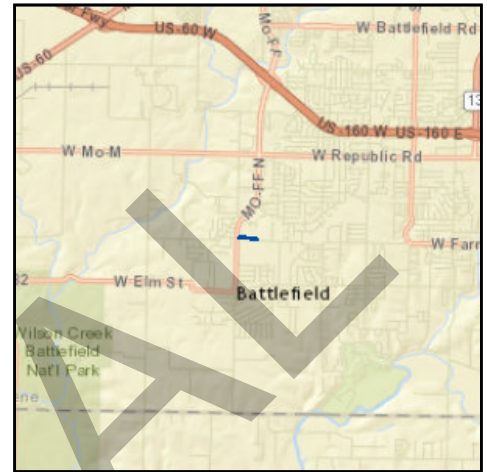
**Responsible Agency** City of Battlefield

**Federal Funding Category** STP-U

**MoDOT Funding Category** N/A

**AC Year of Conv.**

**STIP #**



#### Project Description

Construct a sidewalk from the Wilson's Creek Intermediate School campus west along the north side of Farm Road 178/Weaver Road to State Highway FF.

Fund Code	Source	Phase	FY2015	FY2016	FY2017	FY2018	Total
FHWA (STP-U)	Federal	ENG	\$8,308	\$9,495	\$0	\$0	\$17,803
LOCAL	Local	ENG	\$2,077	\$2,374	\$0	\$0	\$4,451
FHWA (STP-U)	Federal	ROW	\$1,483	\$0	\$0	\$0	\$1,483
LOCAL	Local	ROW	\$371	\$0	\$0	\$0	\$371
FHWA (STP-U)	Federal	CON	\$0	\$59,344	\$0	\$0	\$59,344
LOCAL	Local	CON	\$0	\$14,836	\$0	\$0	\$14,836
<b>Totals</b>			<b>\$12,239</b>	<b>\$86,049</b>	<b>\$0</b>	<b>\$0</b>	<b>\$98,288</b>

#### Notes

Source of Local Funding: 1/2-Cent Transportation Sales Tax

<b>Prior Cost</b>	\$0
<b>Future Cost</b>	\$0
<b>Total Cost</b>	\$98,288





# Transportation Improvement Program - FY 2015-2018

Project Detail by Section and Project Number with Map

## D) Bicycle & Pedestrian Section

**TIP #** EN1513      **WEAVER ROAD SIDEWALKS**

**Route** Weaver

**From** Wilson's Creek Intermediate

**To** FF

**Location/Agency** City of Battlefield

**Federal Agency** FHWA

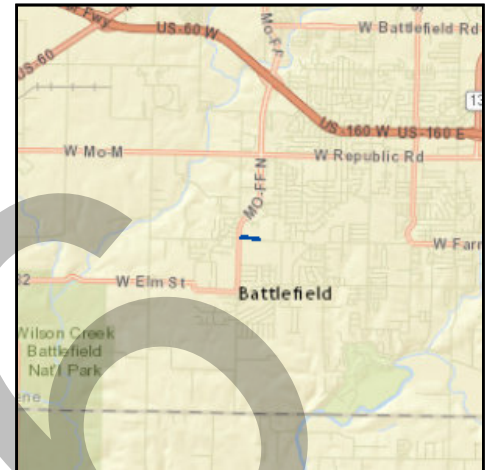
**Responsible Agency** City of Battlefield

**Federal Funding Category** STP-U

**MoDOT Funding Category** N/A

**AC Year of Conv.**

**STIP #**



### Project Description

Construct a sidewalk from the Wilson's Creek Intermediate School campus west along the north side of Farm Road 178/Weaver Road to State Highway FF.

Fund Code	Source	Phase	FY2015	FY2016	FY2017	FY2018	Total
FHWA (STP-U)	Federal	ENG	\$0	\$17,803	\$0	\$0	\$17,803
LOCAL	Local	ENG	\$0	\$4,451	\$0	\$0	\$4,451
FHWA (STP-U)	Federal	ROW	\$0	\$1,483	\$0	\$0	\$1,483
LOCAL	Local	ROW	\$0	\$371	\$0	\$0	\$371
FHWA (STP-U)	Federal	CON	\$0	\$59,344	\$0	\$0	\$59,344
LOCAL	Local	CON	\$0	\$14,836	\$0	\$0	\$14,836
<b>Totals</b>			<b>\$0</b>	<b>\$98,288</b>	<b>\$0</b>	<b>\$0</b>	<b>\$98,288</b>

### Notes

Source of Local Funding: 1/2-Cent Transportation Sales Tax

<b>Prior Cost</b>	\$0
<b>Future Cost</b>	\$0
<b>Total Cost</b>	\$98,288



# Transportation Improvement Program - FY 2015-2018

Project Detail by Section and Project Number with Map

## D) Bicycle & Pedestrian Section

**TIP #** EN1514      **FF SIDEWALKS**

**Route** FF

**From** North of Weaver

**To** Rose Terrace

**Location/Agency**

**Federal Agency**

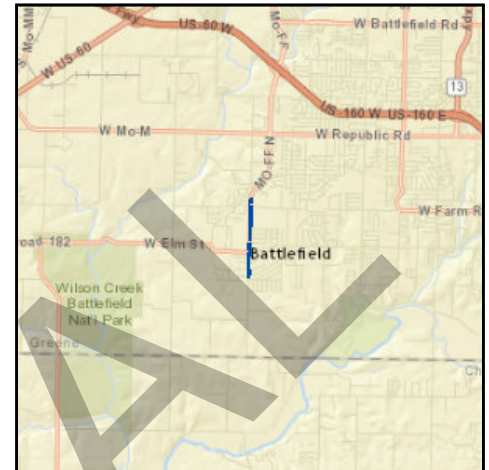
**Responsible Agency** City of Battlefield

**Federal Funding Category** STP-U

**MoDOT Funding Category** N/A

**AC Year of Conv.**

**STIP #**



### Project Description

Sidewalks along FF from north of Weaver to Rose Terrace.

Fund Code	Source	Phase	FY2015	FY2016	FY2017	FY2018	Total
FHWA (STP-U)	Federal	ENG	\$37,420	\$42,766	\$0	\$0	\$80,186
LOCAL	Local	ENG	\$9,355	\$10,692	\$0	\$0	\$20,047
FHWA (STP-U)	Federal	ROW	\$6,682	\$0	\$0	\$0	\$6,682
LOCAL	Local	ROW	\$1,671	\$0	\$0	\$0	\$1,671
FHWA (STP-U)	Federal	CON	\$0	\$267,289	\$0	\$0	\$267,289
LOCAL	Local	CON	\$0	\$66,822	\$0	\$0	\$66,822
<b>Totals</b>			<b>\$55,128</b>	<b>\$387,569</b>	<b>\$0</b>	<b>\$0</b>	<b>\$442,697</b>

### Notes

Source of Local Funding: 1/2-Cent Transportation Sales Tax

<b>Prior Cost</b>	\$0
<b>Future Cost</b>	\$0
<b>Total Cost</b>	\$442,697



# Transportation Improvement Program - FY 2015-2018

Project Detail by Section and Project Number with Map

## D) Bicycle & Pedestrian Section

**TIP #** EN1514      **FF SIDEWALKS**

**Route** FF

**From** North of Weaver

**To** Rose Terrace

**Location/Agency** City of Battlefield

**Federal Agency** FHWA

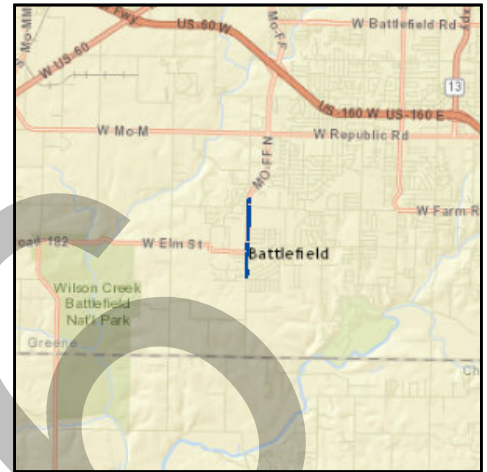
**Responsible Agency** City of Battlefield

**Federal Funding Category** STP-U

**MoDOT Funding Category** N/A

**AC Year of Conv.**

**STIP #**



### Project Description

Sidewalks along FF from north of Weaver to Rose Terrace.

Fund Code	Source	Phase	FY2015	FY2016	FY2017	FY2018	Total
FHWA (STP-U)	Federal	ENG	\$0	\$80,186	\$0	\$0	\$80,186
LOCAL	Local	ENG	\$0	\$20,047	\$0	\$0	\$20,047
FHWA (STP-U)	Federal	ROW	\$0	\$6,682	\$0	\$0	\$6,682
LOCAL	Local	ROW	\$0	\$1,671	\$0	\$0	\$1,671
FHWA (STP-U)	Federal	CON	\$0	\$267,289	\$0	\$0	\$267,289
LOCAL	Local	CON	\$0	\$66,822	\$0	\$0	\$66,822
<b>Totals</b>			<b>\$0</b>	<b>\$442,697</b>	<b>\$0</b>	<b>\$0</b>	<b>\$442,697</b>

### Notes

Source of Local Funding: 1/2-Cent Transportation Sales Tax

<b>Prior Cost</b>	\$0
<b>Future Cost</b>	\$0
<b>Total Cost</b>	\$442,697



# Transportation Improvement Program - FY 2015-2018

Project Detail by Section and Project Number with Map

## D) Bicycle & Pedestrian Section

**TIP #** EN1515 **COLLEGE STREET PHASE II**

**Route** College Street and Broadway

**From** College Street

**To** Broadway

**Location/Agency**

**Federal Agency**

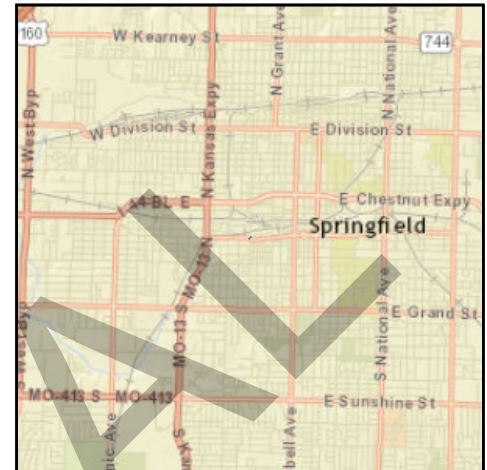
**Responsible Agency** City of Springfield

**Federal Funding Category** TAP

**MoDOT Funding Category** N/A

**AC Year of Conv.**

**STIP #**



### Project Description

College Street Phase II - Pedestrian Plaza at Broadway and College (Route 66).

Fund Code	Source	Phase	FY2015	FY2016	FY2017	FY2018	Total
FHWA (TAP)	Federal	CON	\$240,000	\$0	\$0	\$0	\$240,000
LOCAL	Local	CON	\$110,000	\$0	\$0	\$0	\$110,000
<b>Totals</b>			<b>\$350,000</b>	<b>\$0</b>	<b>\$0</b>	<b>\$0</b>	<b>\$350,000</b>

### Notes

Source of Local Funds: City of Springfield 1/4-Cent Capital Improvement Program Sales Tax.

<b>Prior Cost</b>	\$0
<b>Future Cost</b>	\$0
<b>Total Cost</b>	\$350,000



# Transportation Improvement Program - FY 2015-2018

Project Detail by Section and Project Number with Map

## D) Bicycle & Pedestrian Section

**TIP #** EN1515 **COLLEGE STREET PHASE II**

**Route** College Street and Broadway

**From** College Street

**To** Broadway

**Location/Agency** City of Springfield

**Federal Agency** FHWA

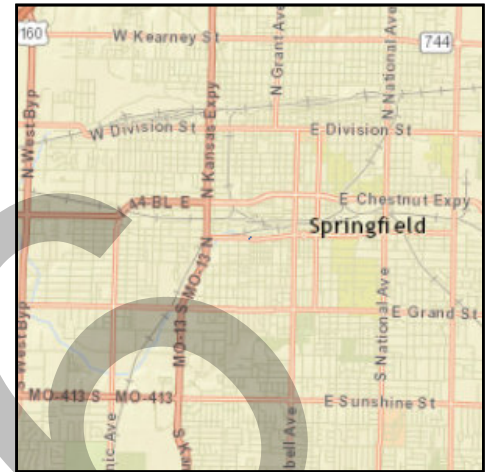
**Responsible Agency** City of Springfield

**Federal Funding Category** TAP

**MoDOT Funding Category** N/A

**AC Year of Conv.**

**STIP #** 5911803



### Project Description

College Street Phase II - Pedestrian Plaza at Broadway and College (Route 66).

Fund Code	Source	Phase	FY2015	FY2016	FY2017	FY2018	Total
FHWA (TAP)	Federal	CON	\$0	\$240,000	\$0	\$0	\$240,000
LOCAL	Local	CON	\$0	\$110,000	\$0	\$0	\$110,000
<b>Totals</b>			<b>\$0</b>	<b>\$350,000</b>	<b>\$0</b>	<b>\$0</b>	<b>\$350,000</b>

### Notes

Source of Local Funds: City of Springfield 1/4-Cent Capital Improvement Program Sales Tax.

<b>Prior Cost</b>	\$0
<b>Future Cost</b>	\$0
<b>Total Cost</b>	\$350,000



# Transportation Improvement Program - FY 2015-2018

Project Detail by Section and Project Number with Map

## E) Roadways Section

**TIP #** NX0601 **MAIN STREET - ALDERSGATE TO TRACKER**

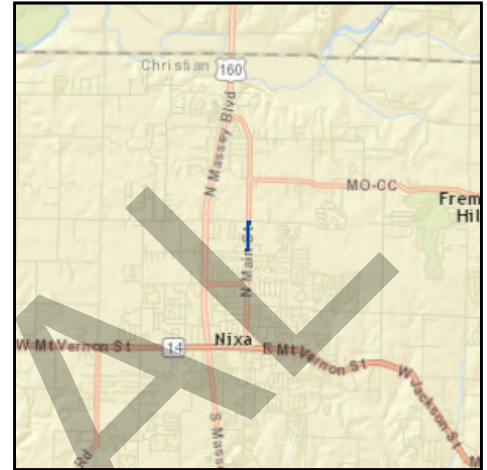
**Route** Main Street  
**From** Tracker Road  
**To** Aldersgate Drive

**Location/Agency**

**Federal Agency** FHWA  
**Responsible Agency** City of Nixa  
**Federal Funding Category** STP-U  
**MoDOT Funding Category** None

**AC Year of Conv.**

**STIP #**



### Project Description

Acquire right of way and complete designed improvements to Main Street from Tracker Road to Aldersgate Drive; project includes Tracker Road intersection improvements and signalization.

Fund Code	Source	Phase	FY2015	FY2016	FY2017	FY2018	Total
FHWA (STP-U)	Federal	CON	\$949,612	\$0	\$0	\$0	\$949,612
LOCAL	Local	CON	\$1,188,388	\$0	\$0	\$0	\$1,188,388
<b>Totals</b>			<b>\$2,138,000</b>	<b>\$0</b>	<b>\$0</b>	<b>\$0</b>	<b>\$2,138,000</b>

### Notes

Source of Local Funds: Nixa local sales tax.

<b>Prior Cost</b>	\$592,000
<b>Future Cost</b>	\$0
<b>Total Cost</b>	\$2,730,000





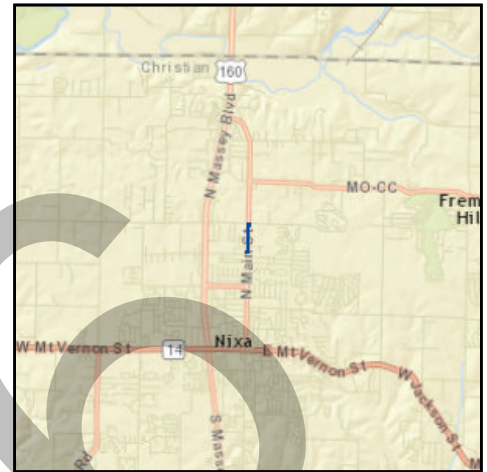
# Transportation Improvement Program - FY 2015-2018

Project Detail by Section and Project Number with Map

## E) Roadways Section

**TIP # NX0601** MAIN STREET - ALDERSGATE TO TRACKER

**Route** Main Street  
**From** Tracker Road  
**To** Aldersgate Drive  
**Location/Agency** City of Nixa  
**Federal Agency** FHWA  
**Responsible Agency** City of Nixa  
**Federal Funding Category** STP-U  
**MoDOT Funding Category** None  
**AC Year of Conv.**  
**STIP #** 9901804



### Project Description

Acquire right of way and complete designed improvements to Main Street from Tracker Road to Aldersgate Drive; project includes Tracker Road intersection improvements and signalization.

Fund Code	Source	Phase	FY2015	FY2016	FY2017	FY2018	Total
FHWA (STP-U)	Federal	CON	\$0	\$949,612	\$0	\$0	\$949,612
LOCAL	Local	CON	\$0	\$1,188,388	\$0	\$0	\$1,188,388
<b>Totals</b>			<b>\$0</b>	<b>\$2,138,000</b>	<b>\$0</b>	<b>\$0</b>	<b>\$2,138,000</b>

### Notes

Source of Local Funds: Nixa local sales tax.

<b>Prior Cost</b>	\$592,000
<b>Future Cost</b>	\$0
<b>Total Cost</b>	\$2,730,000





# Transportation Improvement Program - FY 2015-2018

Project Detail by Section and Project Number with Map

## E) Roadways Section

**TIP # RP1502** HINES AND OAKWOOD CORRIDOR IMPROVEMENTS

**Route** Hines and Oakwood Corridors

**From** Oakwood and US 60

**To** Hines and Cherrywood

**Location/Agency**

**Federal Agency**

**Responsible Agency** City of Republic

**Federal Funding Category** STP-U

**MoDOT Funding Category** N/A

**AC Year of Conv.**

**STIP #**



### Project Description

Capacity and geometric improvements to meet current design standards for secondary arterial roadway.

Fund Code	Source	Phase	FY2015	FY2016	FY2017	FY2018	Total
FHWA (STP-U)	Federal	ENG	\$8,000	\$151,512	\$151,512	\$0	\$311,024
LOCAL	Local	ENG	\$2,000	\$37,878	\$37,878	\$0	\$77,756
FHWA (STP-U)	Federal	ROW	\$0	\$49,608	\$0	\$0	\$49,608
LOCAL	Local	ROW	\$0	\$12,402	\$0	\$0	\$12,402
FHWA (STP-U)	Federal	CON	\$0	\$0	\$1,550,991	\$0	\$1,550,991
LOCAL	Local	CON	\$0	\$0	\$458,250	\$0	\$458,250
<b>Totals</b>			<b>\$10,000</b>	<b>\$251,400</b>	<b>\$2,198,631</b>	<b>\$0</b>	<b>\$2,460,031</b>

### Notes

<b>Prior Cost</b>	\$0
<b>Future Cost</b>	\$0
<b>Total Cost</b>	\$2,460,031



## Transportation Improvement Program - FY 2015-2018

### Project Detail by Section and Project Number with Map

#### E) Roadways Section

**TIP # RP1502** HINES AND OAKWOOD CORRIDOR IMPROVEMENTS

**Route** Hines and Oakwood Corridors

**From** Oakwood and US 60

**To** Hines and Cherrywood

**Location/Agency** City of Republic

**Federal Agency** FHWA

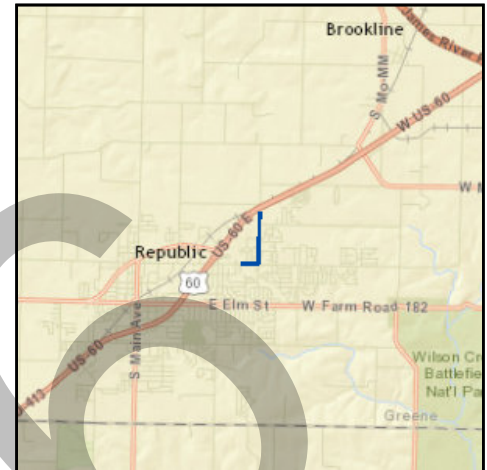
**Responsible Agency** City of Republic

**Federal Funding Category** STP-U

**MoDOT Funding Category** N/A

**AC Year of Conv.**

**STIP #** 6900811



#### Project Description

Capacity and geometric improvements to meet current design standards for secondary arterial roadway.

Fund Code	Source	Phase	FY2015	FY2016	FY2017	FY2018	Total
FHWA (STP-U)	Federal	ENG	\$0	\$159,512	\$151,512	\$0	\$311,024
LOCAL	Local	ENG	\$0	\$39,878	\$37,878	\$0	\$77,756
FHWA (STP-U)	Federal	ROW	\$0	\$49,608	\$0	\$0	\$49,608
LOCAL	Local	ROW	\$0	\$12,402	\$0	\$0	\$12,402
FHWA (STP-U)	Federal	CON	\$0	\$0	\$1,550,991	\$0	\$1,550,991
LOCAL	Local	CON	\$0	\$0	\$458,250	\$0	\$458,250
<b>Totals</b>			<b>\$0</b>	<b>\$261,400</b>	<b>\$2,198,631</b>	<b>\$0</b>	<b>\$2,460,031</b>

#### Notes

Source of Local Funds: City revenues. \$546,531.13 available through STP-U Advance Program.

<b>Prior Cost</b>	\$0
<b>Future Cost</b>	\$0
<b>Total Cost</b>	\$2,460,031



# Transportation Improvement Program - FY 2015-2018

Project Detail by Section and Project Number with Map

## E) Roadways Section

**TIP #** SP1209 **SHUTTLE TRANSITWAY PHASE I**

**Route** John Q. Hammons Parkway

**From** Monroe Street

**To** Grand Street

**Location/Agency**

**Federal Agency**

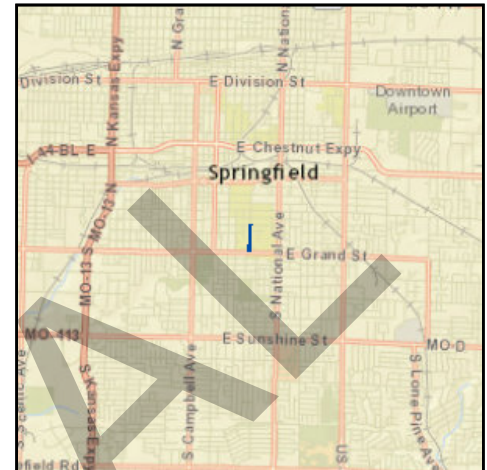
**Responsible Agency** Missouri State University

**Federal Funding Category** STP

**MoDOT Funding Category** N/A

**AC Year of Conv.**

**STIP #**



### Project Description

Construct a transitway along John Q. Hammons Parkway from Monroe Street to Grand Street, as an extension to the existing transitway. These improvements would provide for a dedicated corridor for transit, pedestrians, and bicyclists.

Fund Code	Source	Phase	FY2015	FY2016	FY2017	FY2018	Total
FHWA (STP)	Federal	CON	\$499,915	\$0	\$0	\$0	\$499,915
LOCAL	Local	CON	\$124,979	\$0	\$0	\$0	\$124,979
<b>Totals</b>			<b>\$624,894</b>	<b>\$0</b>	<b>\$0</b>	<b>\$0</b>	<b>\$624,894</b>

### Notes

Source of Federal Funds: Federal earmark in the amount of \$499,915. Source of Local Funds: Missouri State University Operating Funds. Phase II (MS1103) is contingent upon application for FTA 5339 funding.

<b>Prior Cost</b>	\$0
<b>Future Cost</b>	\$0
<b>Total Cost</b>	\$624,894



# Transportation Improvement Program - FY 2015-2018

Project Detail by Section and Project Number with Map

## E) Roadways Section

**TIP #** SP1209      **SHUTTLE TRANSITWAY PHASE I**

**Route** John Q. Hammons Parkway

**From** Monroe Street

**To** Grand Street

**Location/Agency** City of Springfield

**Federal Agency** FHWA

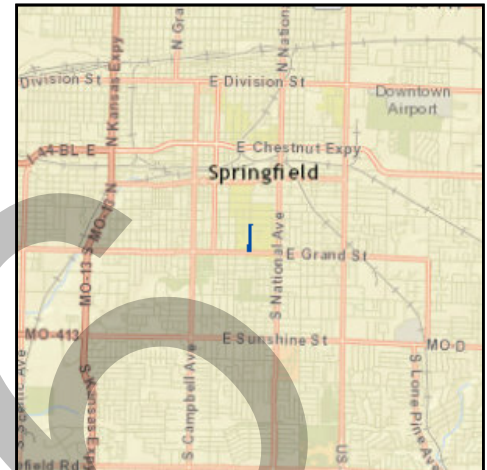
**Responsible Agency** Missouri State University

**Federal Funding Category** STP

**MoDOT Funding Category** N/A

**AC Year of Conv.**

**STIP #** 5938802



### Project Description

Construct a transitway along John Q. Hammons Parkway from Monroe Street to Grand Street, as an extension to the existing transitway. These improvements would provide for a dedicated corridor for transit, pedestrians, and bicyclists.

Fund Code	Source	Phase	FY2015	FY2016	FY2017	FY2018	Total
FHWA (STP)	Federal	CON	\$487,297	\$12,618	\$0	\$0	\$499,915
LOCAL	Local	CON	\$121,824	\$3,155	\$0	\$0	\$124,979
<b>Totals</b>			<b>\$609,121</b>	<b>\$15,773</b>	<b>\$0</b>	<b>\$0</b>	<b>\$624,894</b>

### Notes

Source of Federal Funds: Federal earmark in the amount of \$499,915. Source of Local Funds: Missouri State University Operating Funds. Phase II (MS1103) is contingent upon application for FTA 5339 funding.

<b>Prior Cost</b>	\$0
<b>Future Cost</b>	\$0
<b>Total Cost</b>	\$624,894



# Transportation Improvement Program - FY 2015-2018

Project Detail by Section and Project Number with Map

## E) Roadways Section

**TIP #** SP1415 **ROUTE 65 AND DIVISION STREET INTERCHANGE**

**Route** US 65

**From** Division St.

**To** Rte. YY

**Location/Agency**

**Federal Agency**

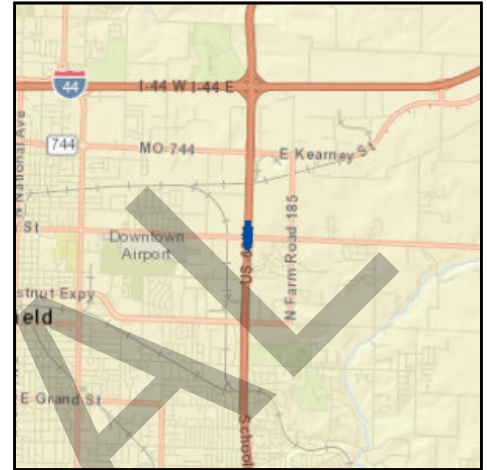
**Responsible Agency** MoDOT

**Federal Funding Category** NHPP(NHS)

**MoDOT Funding Category** Major Projects and Emerging Needs

**AC Year of Conv.** FY 2015, FY 2016

**STIP #** 8P3036



### Project Description

Interchange improvements at US 65 and Division Street (Rte. YY).

Fund Code	Source	Phase	FY2015	FY2016	FY2017	FY2018	Total
FHWA (NHPP)	Federal	ENG	\$0	\$84,000	\$89,600	\$0	\$173,600
MoDOT	State	ENG	\$21,800	\$21,000	\$22,400	\$0	\$65,200
MoDOT-AC	State	ENG	\$87,200	\$0	\$0	\$0	\$87,200
FHWA (NHPP)	Federal	ROW	\$0	\$218,000	\$0	\$0	\$218,000
FHWA (STP-U)	Federal	ROW	\$0	\$734,000	\$0	\$0	\$734,000
LOCAL	Local	ROW	\$0	\$184,000	\$0	\$0	\$184,000
MoDOT	State	ROW	\$0	\$54,000	\$0	\$0	\$54,000
FHWA (NHPP)	Federal	CON	\$0	\$0	\$1,284,308	\$0	\$1,284,308
FHWA (STP-U)	Federal	CON	\$0	\$0	\$1,089,292	\$0	\$1,089,292
LOCAL	Local	CON	\$0	\$0	\$271,823	\$0	\$271,823
MoDOT	State	CON	\$0	\$0	\$321,577	\$0	\$321,577
<b>Totals</b>			<b>\$109,000</b>	<b>\$1,295,000</b>	<b>\$3,079,000</b>	<b>\$0</b>	<b>\$4,483,000</b>

### Notes

Source of State Funds: State transportation revenues. Source of Local Funds: Springfield 1/8-cent transportation sales tax. \$1,519,395 MoDOT Cost Share Program, \$1,823,292 Springfield STP-Urban, \$455,823 Springfield Local.

<b>Prior Cost</b>	\$10,000
<b>Future Cost</b>	\$0
<b>Total Cost</b>	\$4,493,000



# Transportation Improvement Program - FY 2015-2018

Project Detail by Section and Project Number with Map

## E) Roadways Section

**TIP # SP1415** ROUTE 65 AND DIVISION STREET INTERCHANGE

**Route** US 65

**From** Division St.

**To** Rte. YY

**Location/Agency** City of Springfield

**Federal Agency** FHWA

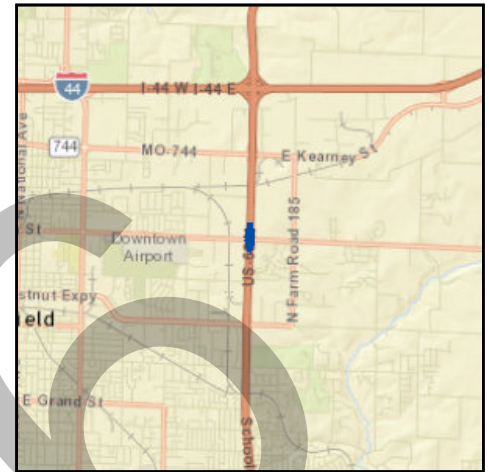
**Responsible Agency** MoDOT

**Federal Funding Category** NHPP(NHS)

**MoDOT Funding Category** Major Projects and Emerging Needs

**AC Year of Conv.** FY 2015, FY 2016

**STIP #** 8P3036



### Project Description

Interchange improvements at US 65 and Division Street (Rte. YY).

Fund Code	Source	Phase	FY2015	FY2016	FY2017	FY2018	Total
FHWA (NHPP)	Federal	ENG	\$84,000	\$0	\$89,600	\$0	\$173,600
MoDOT	State	ENG	\$42,800	\$0	\$22,400	\$0	\$65,200
MoDOT-AC	State	ENG	\$87,200	\$0	\$0	\$0	\$87,200
FHWA (NHPP)	Federal	ROW	\$0	\$218,000	\$0	\$0	\$218,000
FHWA (STP-U)	Federal	ROW	\$734,000	\$0	\$0	\$0	\$734,000
LOCAL	Local	ROW	\$184,000	\$0	\$0	\$0	\$184,000
MoDOT	State	ROW	\$0	\$54,000	\$0	\$0	\$54,000
FHWA (NHPP)	Federal	CON	\$0	\$0	\$1,284,308	\$0	\$1,284,308
FHWA (STP-U)	Federal	CON	\$0	\$0	\$1,089,292	\$0	\$1,089,292
LOCAL	Local	CON	\$0	\$0	\$271,823	\$0	\$271,823
MoDOT	State	CON	\$0	\$0	\$321,577	\$0	\$321,577
<b>Totals</b>			<b>\$1,132,000</b>	<b>\$272,000</b>	<b>\$3,079,000</b>	<b>\$0</b>	<b>\$4,483,000</b>

### Notes

Source of State Funds: State transportation revenues. Source of Local Funds: Springfield 1/8-cent transportation sales tax. \$1,519,395 MoDOT Cost Share Program, \$1,823,292 Springfield STP-Urban, \$455,823 Springfield Local.

<b>Prior Cost</b>	\$10,000
<b>Future Cost</b>	\$0
<b>Total Cost</b>	\$4,493,000





# Transportation Improvement Program - FY 2015-2018

Project Detail by Section and Project Number with Map

## E) Roadways Section

**TIP # SP1109** EAST CHESTNUT EXPRESSWAY RAILROAD OVERPASS

**Route** Chestnut Expressway

**From** Chestnut Expressway

**To** BNSF Railway

**Location/Agency**

**Federal Agency**

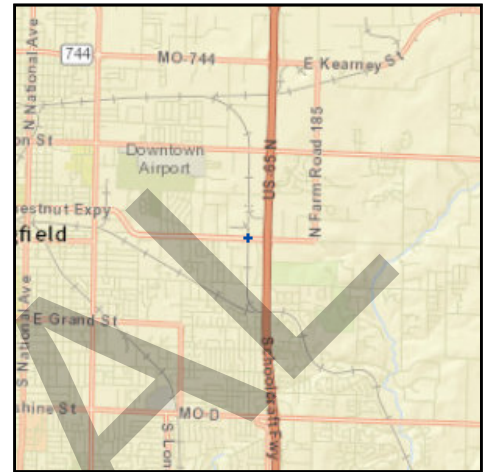
**Responsible Agency** MoDOT

**Federal Funding Category** NHPP(NHS), STP

**MoDOT Funding Category** Major Projects and Emerging Needs

**AC Year of Conv.** FY 2015 and FY 2016

**STIP #** 8P2196



### Project Description

Construct a grade separated crossing at the Chestnut Expressway (Business 65) BNSF railway crossing 0.2 miles west of Route 65.

Fund Code	Source	Phase	FY2015	FY2016	FY2017	FY2018	Total
MoDOT	State	ENG	\$429,000	\$0	\$0	\$0	\$429,000
OTHER	Other	CAPITAL	\$343,000	\$0	\$0	\$0	\$343,000
FHWA (130)	Federal	CON	\$2,250,000	\$0	\$0	\$0	\$2,250,000
FHWA (STP-U)	Federal	CON	\$1,506,000	\$0	\$0	\$0	\$1,506,000
MoDOT	State	CON	\$969,400	\$0	\$0	\$0	\$969,400
MoDOT-AC	State	CON	\$3,877,600	\$0	\$0	\$0	\$3,877,600
MoDOT-GCSA	State	CON	\$750,000	\$0	\$0	\$0	\$750,000
<b>Totals</b>			<b>\$10,125,000</b>	<b>\$0</b>	<b>\$0</b>	<b>\$0</b>	<b>\$10,125,000</b>

### Notes

Source of State Funds: State transportation revenues in statewide cost share program. Local Funds: Springfield 1/8-cent transportation sales tax. \$4,846,523 MoDOT Cost Share Program (\$969,400 State funds, \$3,877,600 State AC), \$2,000,000 Springfield Local, \$3,633,700 Springfield STP-U, \$400,000 Greene STP-U and \$343,000 BNSF.

<b>Prior Cost</b>	\$4,651,400
<b>Future Cost</b>	\$0
<b>Total Cost</b>	\$14,776,400





# Transportation Improvement Program - FY 2015-2018

## Project Detail by Section and Project Number with Map

### E) Roadways Section

**TIP #** SP1109 **EAST CHESTNUT EXPRESSWAY RAILROAD OVERPASS**

**Route** Chestnut Expressway

**From** Chestnut Expressway

**To** BNSF Railway

**Location/Agency** City of Springfield

**Federal Agency** FHWA

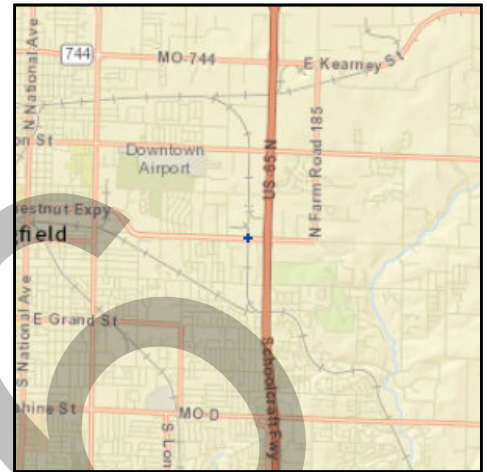
**Responsible Agency** MoDOT

**Federal Funding Category** NHPP(NHS), STP

**MoDOT Funding Category** Major Projects and Emerging Needs

**AC Year of Conv.** FY 2015 and FY 2016

**STIP #** 8P2196



#### Project Description

Construct a grade separated crossing at the Chestnut Expressway (Business 65) BNSF railway crossing 0.2 miles west of Route 65.

Fund Code	Source	Phase	FY2015	FY2016	FY2017	FY2018	Total
FHWA (NHPP)	Federal	ENG	\$0	\$255,200	\$0	\$0	\$255,200
MoDOT	State	ENG	\$0	\$63,800	\$0	\$0	\$63,800
FHWA (130)	Federal	CON	\$0	\$2,250,000	\$0	\$0	\$2,250,000
FHWA (NHPP)	Federal	CON	\$2,763,298	\$0	\$0	\$0	\$2,763,298
FHWA (STP-U)	Federal	CON	\$0	\$391,612	\$0	\$0	\$391,612
MoDOT	State	CON	\$0	\$690,824	\$0	\$0	\$690,824
MoDOT-GCSA	State	CON	\$0	\$750,000	\$0	\$0	\$750,000
OTHER	Other	CON	\$0	\$343,000	\$0	\$0	\$343,000
<b>Totals</b>			<b>\$2,763,298</b>	<b>\$4,744,436</b>	<b>\$0</b>	<b>\$0</b>	<b>\$7,507,734</b>

#### Notes

Source of State Funds: State transportation revenues and statewide cost share program. Local Funds: Springfield 1/8-cent transportation sales tax. \$3,454,122 MoDOT Cost Share Program, \$2,000,000 Springfield Local, \$2,458,612 Springfield STP-U, and \$343,000 BNSF.

<b>Prior Cost</b>	\$4,651,400
<b>Future Cost</b>	\$0
<b>Total Cost</b>	\$12,159,134



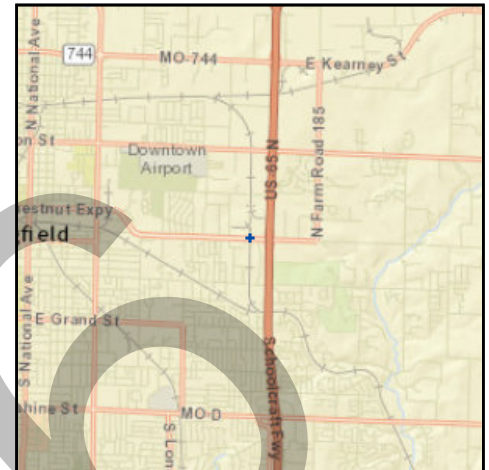
## Transportation Improvement Program - FY 2015-2018

### Project Detail by Section and Project Number with Map

#### E) Roadways Section

**TIP # SP1603** UTILITIES AND ACCESS IMPROVEMENTS FOR EAST CHESTNUT EXPRESSWAY

**Route** Chestnut Expressway  
**From** Chestnut Expressway  
**To** BNSF Railway  
**Location/Agency** City of Springfield  
**Federal Agency** FHWA  
**Responsible Agency** MoDOT  
**Federal Funding Category** NHPP(NHS), STP  
**MoDOT Funding Category** Major Projects and Emerging Needs  
**AC Year of Conv.**  
**STIP #** 8P2196B



#### Project Description

Utility relocation and access improvements for a grade separated crossing at the Chestnut Expressway (Business 65) BNSF railway crossing 0.2 miles west of Route 65.

Fund Code	Source	Phase	FY2015	FY2016	FY2017	FY2018	Total
FHWA (NHPP)	Federal	ENG	\$0	\$88,000	\$0	\$0	\$88,000
MoDOT	State	ENG	\$0	\$22,000	\$0	\$0	\$22,000
FHWA (NHPP)	Federal	CON	\$0	\$1,113,921	\$0	\$0	\$1,113,921
FHWA (STP-U)	Federal	CON	\$0	\$1,114,589	\$0	\$0	\$1,114,589
MoDOT	State	CON	\$0	\$278,480	\$0	\$0	\$278,480
<b>Totals</b>			<b>\$0</b>	<b>\$2,616,990</b>	<b>\$0</b>	<b>\$0</b>	<b>\$2,616,990</b>

#### Notes

Source of State Funds: State transportation revenues and statewide Cost Share Program. \$1,392,401 MoDOT Cost Share Program, \$714,589 Springfield STP-U, \$400,000 Greene County STP-U. Split from SP1109.

<b>Prior Cost</b>	\$0
<b>Future Cost</b>	\$0
<b>Total Cost</b>	\$2,616,990

# FINANCIAL SUMMARY

## Bicycle & Pedestrian

### YEARLY SUMMARY

					Local	State		
PROJECT	FHWA (STP)	FHWA (STP-U)	FHWA (TE)	FHWA (TAP)	LOCAL	MoDOT	MoDOT-AC	TOTAL
FY 2015								
EN1302	\$0	\$0	\$0	\$0	\$0	\$0	\$0	\$0
EN1305	\$0	\$0	\$0	\$0	\$0	\$0	\$0	\$0
EN1306	\$0	\$0	\$0	\$0	\$0	\$0	\$0	\$0
EN1307	\$0	\$0	\$200,000	\$0	\$50,000	\$0	\$0	\$250,000
EN1401	\$0	\$12,466	\$0	\$0	\$3,117	\$0	\$0	\$15,583
EN1502	\$0	\$0	\$0	\$0	\$0	\$194,800	\$779,200	\$974,000
EN1503	\$0	\$0	\$0	\$18,441	\$4,610	\$0	\$0	\$23,051
EN1504	\$0	\$0	\$0	\$21,569	\$5,392	\$0	\$0	\$26,961
EN1505	\$0	\$0	\$0	\$10,815	\$2,704	\$0	\$0	\$13,519
EN1506	\$0	\$0	\$0	\$44,535	\$11,134	\$0	\$0	\$55,669
EN1507	\$0	\$0	\$0	\$0	\$0	\$0	\$0	\$0
EN1508	\$0	\$0	\$0	\$0	\$0	\$0	\$0	\$0
EN1509	\$0	\$0	\$0	\$0	\$0	\$0	\$0	\$0
EN1510	\$0	\$0	\$0	\$27,131	\$6,783	\$0	\$0	\$33,914
EN1511	\$0	\$0	\$0	\$26,139	\$6,535	\$0	\$0	\$32,674
EN1512	\$0	\$0	\$0	\$0	\$0	\$0	\$0	\$0
EN1513	\$0	\$0	\$0	\$0	\$0	\$0	\$0	\$0
EN1514	\$0	\$0	\$0	\$0	\$0	\$0	\$0	\$0
EN1515	\$0	\$0	\$0	\$0	\$0	\$0	\$0	\$0
MO1309	\$0	\$0	\$0	\$0	\$0	\$5,000	\$20,000	\$25,000
SP1412	\$0	\$0	\$0	\$0	\$0	\$118,600	\$474,400	\$593,000
SP1414	\$69,000	\$0	\$175,000	\$0	\$30,000	\$31,000	\$0	\$305,000
SUBTOTAL	\$69,000	\$12,466	\$375,000	\$148,630	\$120,275	\$349,400	\$1,273,600	\$2,348,371
FY 2016								
EN1305	\$0	\$459,587	\$220,413	\$0	\$170,000	\$0	\$0	\$850,000
EN1306	\$0	\$0	\$320,000	\$0	\$80,000	\$0	\$0	\$400,000
EN1401	\$0	\$35,534	\$0	\$0	\$8,883	\$0	\$0	\$44,417
EN1503	\$0	\$0	\$0	\$104,525	\$26,132	\$0	\$0	\$130,657
EN1504	\$0	\$0	\$0	\$120,066	\$30,017	\$0	\$0	\$150,083
EN1505	\$0	\$0	\$0	\$29,219	\$7,305	\$0	\$0	\$36,524
EN1506	\$0	\$0	\$0	\$205,465	\$130,042	\$0	\$0	\$335,507
EN1507	\$0	\$0	\$0	\$192,680	\$48,170	\$0	\$0	\$240,850
EN1508	\$0	\$0	\$0	\$250,000	\$179,000	\$0	\$0	\$429,000
EN1509	\$0	\$0	\$0	\$250,000	\$280,000	\$0	\$0	\$530,000
EN1510	\$0	\$0	\$0	\$222,869	\$55,717	\$0	\$0	\$278,586
EN1511	\$0	\$0	\$0	\$133,861	\$33,465	\$0	\$0	\$167,326
EN1512	\$0	\$0	\$0	\$133,080	\$33,270	\$0	\$0	\$166,350
EN1513	\$0	\$78,630	\$0	\$0	\$19,658	\$0	\$0	\$98,288
EN1514	\$0	\$354,157	\$0	\$0	\$88,540	\$0	\$0	\$442,697
EN1515	\$0	\$0	\$0	\$240,000	\$110,000	\$0	\$0	\$350,000
EN1601	\$31,200	\$0	\$192,000	\$0	\$0	\$55,800	\$0	\$279,000
MO1309	\$0	\$0	\$0	\$0	\$0	\$5,000	\$20,000	\$25,000
SUBTOTAL	\$31,200	\$927,908	\$732,413	\$1,881,765	\$1,300,199	\$60,800	\$20,000	\$4,954,285
FY 2017								
MO1309	\$0	\$0	\$0	\$0	\$0	\$5,000	\$20,000	\$25,000
SUBTOTAL	\$0	\$0	\$0	\$0	\$0	\$5,000	\$20,000	\$25,000
FY 2018								
MO1309	\$0	\$0	\$0	\$0	\$0	\$5,000	\$20,000	\$25,000
SUBTOTAL	\$0	\$0	\$0	\$0	\$0	\$5,000	\$20,000	\$25,000
GRAND TOTAL	\$100,200	\$940,374	\$1,107,413	\$2,030,395	\$1,420,474	\$420,200	\$1,333,600	\$7,352,655

## FINANCIAL CONSTRAINT

### Bicycle & Pedestrian

	STP	STP-U	TE	TAP	Local	MoDOT	MoDOT-AC	TOTAL
<b>PRIOR YEAR</b>								
Balance	\$ -	\$ -	\$ -	\$837,863	\$ -	\$ -	\$ -	\$837,863
<b>FY 2015</b>								
Funds Anticipated	\$69,000	\$12,466	\$375,000	\$1,199,376	\$120,275	\$349,400	\$1,273,600	\$3,399,117
Funds Programmed	(\$69,000.00)	(\$12,466.00)	(\$375,000.00)	(\$148,630.00)	(\$120,275.00)	(\$349,400.00)	(\$1,273,600.00)	(\$2,348,371.00)
<b>Running Balance</b>	<b>\$0</b>	<b>\$0</b>	<b>\$0</b>	<b>\$1,888,609</b>	<b>\$0</b>	<b>\$0</b>	<b>\$0</b>	<b>\$1,888,609</b>
<b>FY 2016</b>								
Funds Anticipated	\$ 31,200.00	\$927,908	\$732,413	\$0	\$1,300,199.00	\$60,800	\$20,000	\$3,072,520
Funds Programmed	(\$31,200.00)	(\$927,908.00)	(\$732,413.00)	(\$1,881,765.00)	(\$1,300,199.00)	(\$60,800.00)	(\$20,000.00)	(\$4,954,285.00)
<b>Running Balance</b>	<b>\$0</b>	<b>\$0</b>	<b>\$0</b>	<b>\$6,844</b>	<b>\$0</b>	<b>\$0</b>	<b>\$0</b>	<b>\$6,844</b>
<b>FY 2017</b>								
Funds Anticipated	\$ -	\$ -	\$ -	\$612,826	\$ -	\$5,000	\$20,000	\$637,826
Funds Programmed	\$ -	\$ -	\$ -	\$ -	\$ -	(\$5,000.00)	(\$20,000.00)	(\$25,000.00)
<b>Running Balance</b>	<b>\$0</b>	<b>\$0</b>	<b>\$0</b>	<b>\$619,670</b>	<b>\$0</b>	<b>\$0</b>	<b>\$0</b>	<b>\$619,670</b>
<b>FY 2018</b>								
Funds Anticipated	\$ -	\$ -	\$ -	\$612,826	\$ -	\$5,000	\$20,000	\$637,826
Funds Programmed	\$ -	\$ -	\$ -	\$ -	\$ -	(\$5,000.00)	(\$20,000.00)	(\$25,000.00)
<b>Running Balance</b>	<b>\$0</b>	<b>\$0</b>	<b>\$0</b>	<b>\$1,232,496</b>	<b>\$0</b>	<b>\$0</b>	<b>\$0</b>	<b>\$1,232,496</b>

# FINANCIAL SUMMARY

## Roadways

### YEARLY SUMMARY

	Federal								Local	State			Other	
PROJECT	FHWA (STP-U)	FHWA (SAFETY)	FHWA (BRIDGE)	FHWA (STP)	FHWA (130)	FHWA (NHPP)	FHWA (HPP)	FHWA (BRO)	LOCAL	MoDOT	MoDOT GCSA	MoDOT-AC	OTHER	TOTAL
FY 2015														
BA1101	\$8,000	\$0	\$0	\$0	\$0	\$0	\$0	\$0	\$2,000	\$0	\$0	\$0	\$0	\$10,000
CC0901	\$0	\$0	\$0	\$0	\$0	\$0	\$0	\$0	\$0	\$400	\$0	\$1,600	\$0	\$2,000
CC1102	\$0	\$0	\$0	\$0	\$0	\$0	\$0	\$0	\$0	\$400	\$0	\$1,600	\$0	\$2,000
CC1110	\$2,072,000	\$0	\$0	\$0	\$0	\$0	\$0	\$0	\$1,557,044	\$97,600	\$0	\$3,893,356	\$0	\$7,620,000
GR1010	\$0	\$911,000	\$0	\$0	\$0	\$0	\$0	\$0	\$0	\$2,369,000	\$0	\$9,071,000	\$0	\$12,351,000
GR1104	\$0	\$0	\$0	\$0	\$160,000	\$0	\$0	\$0	\$0	\$0	\$40,000	\$0	\$0	\$200,000
GR1213	\$0	\$0	\$0	\$0	\$0	\$0	\$0	\$1,133,600	\$283,400	\$0	\$0	\$0	\$0	\$1,417,000
GR1312	\$0	\$0	\$0	\$0	\$0	\$0	\$0	\$371,200	\$92,800	\$0	\$0	\$0	\$0	\$464,000
GR1402	\$0	\$0	\$0	\$168,800	\$1,049,967	\$0	\$0	\$0	\$0	\$105,200	\$1,048,968	\$0	\$126,065	\$2,499,000
GR1403	\$0	\$0	\$0	\$0	\$0	\$0	\$0	\$0	\$0	\$400	\$0	\$1,600	\$0	\$2,000
GR1408	\$0	\$0	\$0	\$0	\$0	\$0	\$0	\$0	\$0	\$400	\$0	\$1,600	\$0	\$2,000
GR1501	\$1,200,000	\$0	\$0	\$0	\$0	\$0	\$0	\$0	\$300,000	\$0	\$0	\$0	\$0	\$1,500,000
GR1502	\$960,000	\$0	\$0	\$0	\$0	\$0	\$0	\$0	\$240,000	\$0	\$0	\$0	\$0	\$1,200,000
MO1105	\$0	\$0	\$0	\$0	\$0	\$0	\$0	\$0	\$0	\$284,000	\$0	\$0	\$0	\$284,000
MO1201	\$0	\$1,800	\$0	\$0	\$0	\$0	\$0	\$0	\$0	\$200	\$0	\$0	\$0	\$2,000
MO1404	\$0	\$0	\$0	\$0	\$0	\$0	\$0	\$0	\$0	\$400	\$0	\$1,600	\$0	\$2,000
MO1405	\$0	\$0	\$0	\$0	\$0	\$0	\$0	\$0	\$0	\$25,000	\$0	\$0	\$0	\$25,000
MO1408	\$0	\$0	\$0	\$0	\$0	\$0	\$0	\$0	\$0	\$196,000	\$0	\$784,000	\$0	\$980,000
MO1409	\$0	\$0	\$0	\$0	\$0	\$0	\$0	\$0	\$0	\$330,800	\$0	\$1,323,200	\$0	\$1,654,000
MO1501	\$0	\$32,000	\$0	\$0	\$0	\$0	\$0	\$0	\$0	\$0	\$0	\$0	\$0	\$32,000
MO1503	\$276,000	\$0	\$0	\$0	\$0	\$0	\$0	\$0	\$69,000	\$134,600	\$0	\$538,400	\$0	\$1,018,000
MO1504	\$0	\$0	\$0	\$0	\$0	\$0	\$0	\$0	\$0	\$21,600	\$0	\$194,400	\$0	\$216,000
MO1505	\$0	\$0	\$0	\$0	\$0	\$0	\$0	\$0	\$0	\$1,000	\$0	\$0	\$0	\$1,000
MO1601	\$0	\$0	\$0	\$0	\$0	\$0	\$0	\$0	\$0	\$2,000	\$0	\$0	\$0	\$2,000
MO1604	\$0	\$55,800	\$0	\$0	\$0	\$0	\$0	\$0	\$0	\$6,200	\$0	\$0	\$0	\$62,000
MO1605	\$0	\$0	\$0	\$0	\$0	\$0	\$0	\$0	\$0	\$400	\$0	\$1,600	\$0	\$2,000
MO1705	\$0	\$0	\$0	\$0	\$0	\$0	\$0	\$0	\$0	\$400	\$0	\$1,600	\$0	\$2,000
NX0601	\$0	\$0	\$0	\$0	\$0	\$0	\$0	\$0	\$0	\$0	\$0	\$0	\$0	\$0
NX0906	\$0	\$0	\$0	\$0	\$0	\$0	\$0	\$0	\$0	\$10,800	\$0	\$43,200	\$0	\$54,000
OK1401	\$0	\$0	\$0	\$0	\$0	\$0	\$0	\$0	\$0	\$400	\$0	\$1,600	\$0	\$2,000
RG0901	\$0	\$0	\$0	\$0	\$0	\$0	\$0	\$0	\$0	\$400	\$0	\$1,600	\$0	\$2,000
RG1201	\$0	\$0	\$0	\$0	\$0	\$0	\$0	\$0	\$0	\$400	\$0	\$1,600	\$0	\$2,000
RP1401	\$0	\$0	\$0	\$0	\$0	\$0	\$0	\$0	\$0	\$400	\$0	\$1,600	\$0	\$2,000
RP1601	\$40,000	\$0	\$0	\$0	\$0	\$0	\$0	\$0	\$10,000	\$0	\$0	\$0	\$0	\$50,000
RP1502	\$0	\$0	\$0	\$0	\$0	\$0	\$0	\$0	\$0	\$0	\$0	\$0	\$0	\$0
SP1018	\$0	\$0	\$248,000	\$0	\$0	\$0	\$0	\$0	\$0	\$62,000	\$0	\$0	\$0	\$310,000
SP1106	\$0	\$0	\$0	\$0	\$0	\$0	\$0	\$0	\$0	\$400	\$0	\$1,600	\$0	\$2,000
SP1109	\$0	\$0	\$0	\$0	\$0	\$2,763,298	\$0	\$0	\$0	\$0	\$0	\$0	\$0	\$2,763,298
SP1112	\$0	\$0	\$0	\$0	\$0	\$0	\$0	\$0	\$0	\$400	\$0	\$1,600	\$0	\$2,000
SP1114	\$0	\$0	\$0	\$0	\$160,000	\$0	\$0	\$0	\$0	\$0	\$40,000	\$0	\$0	\$200,000
SP1120	\$0	\$0	\$0	\$0	\$4,000	\$0	\$0	\$0	\$0	\$0	\$1,000	\$0	\$0	\$5,000
SP1204	\$0	\$0	\$0	\$0	\$0	\$0	\$0	\$0	\$0	\$400	\$0	\$1,600	\$0	\$2,000
SP1209	\$0	\$0	\$0	\$487,297	\$0	\$0	\$0	\$0	\$121,824	\$0	\$0	\$0	\$0	\$609,121
SP1315	\$0	\$0	\$0	\$0	\$0	\$0	\$0	\$0	\$0	\$88,200	\$0	\$352,800	\$0	\$441,000

FY 2015 continued on next page

# FINANCIAL SUMMARY

## Roadways

### YEARLY SUMMARY

	Federal								Local	State			Other	
PROJECT	FHWA (STP-U)	FHWA (SAFETY)	FHWA (BRIDGE)	FHWA (STP)	FHWA (130)	FHWA (NHPP)	FHWA (HPP)	FHWA (BRO)	LOCAL	MoDOT	MoDOT GCSA	MoDOT-AC	OTHER	TOTAL
<b>FY 2015 continued</b>														
SP1316	\$0	\$0	\$0	\$0	\$0	\$0	\$0	\$0	\$0	\$391,800	\$0	\$1,567,200	\$0	\$1,959,000
SP1318	\$0	\$0	\$0	\$0	\$0	\$0	\$0	\$0	\$0	\$233,000	\$0	\$932,000	\$0	\$1,165,000
SP1321	\$10,000	\$0	\$0	\$0	\$0	\$0	\$0	\$0	\$3,984	\$0	\$0	\$0	\$0	\$13,984
SP1323	\$47,000	\$0	\$0	\$0	\$0	\$0	\$0	\$0	\$10,000	\$31,800	\$0	\$127,200	\$0	\$216,000
SP1401	\$0	\$0	\$0	\$0	\$0	\$0	\$0	\$0	\$0	\$1,000	\$0	\$4,000	\$0	\$5,000
SP1403	\$0	\$0	\$0	\$480,800	\$0	\$0	\$0	\$0	\$0	\$120,400	\$0	\$800	\$0	\$602,000
SP1405	\$0	\$0	\$0	\$0	\$0	\$0	\$0	\$0	\$0	\$400	\$0	\$1,600	\$0	\$2,000
SP1408	\$0	\$0	\$0	\$0	\$0	\$0	\$0	\$0	\$0	\$255,400	\$0	\$1,021,600	\$0	\$1,277,000
SP1409	\$0	\$0	\$0	\$0	\$0	\$0	\$0	\$0	\$0	\$7,300	\$0	\$65,700	\$0	\$73,000
SP1410	\$0	\$0	\$0	\$0	\$0	\$0	\$0	\$0	\$0	\$40,000	\$0	\$160,000	\$0	\$200,000
SP1411	\$0	\$0	\$0	\$0	\$0	\$0	\$0	\$0	\$0	\$109,600	\$0	\$438,400	\$0	\$548,000
SP1415	\$734,000	\$0	\$0	\$0	\$0	\$84,000	\$0	\$0	\$184,000	\$42,800	\$0	\$87,200	\$0	\$1,132,000
SP1416	\$0	\$0	\$0	\$0	\$0	\$0	\$0	\$0	\$0	\$400	\$0	\$1,600	\$0	\$2,000
SP1501	\$0	\$0	\$0	\$0	\$0	\$0	\$0	\$0	\$0	\$75,200	\$0	\$300,800	\$0	\$376,000
SP1502	\$0	\$0	\$0	\$0	\$0	\$54,400	\$0	\$0	\$0	\$15,600	\$0	\$0	\$0	\$70,000
WI1301	\$0	\$0	\$0	\$0	\$0	\$0	\$0	\$0	\$0	\$1,000	\$0	\$4,000	\$0	\$5,000
WI1501	\$40,000	\$0	\$0	\$0	\$0	\$0	\$0	\$0	\$10,000	\$0	\$0	\$0	\$0	\$50,000
<b>SUBTOTAL</b>	<b>\$5,339,000</b>	<b>\$1,000,600</b>	<b>\$248,000</b>	<b>\$1,136,897</b>	<b>\$1,373,967</b>	<b>\$2,901,698</b>	<b>\$0</b>	<b>\$1,504,800</b>	<b>\$2,872,052</b>	<b>\$5,065,500</b>	<b>\$1,129,968</b>	<b>\$20,934,856</b>	<b>\$126,065</b>	<b>\$43,633,403</b>
<b>FY 2016</b>														
CC0901	\$0	\$0	\$0	\$0	\$0	\$0	\$0	\$0	\$0	\$400	\$0	\$1,600	\$0	\$2,000
CC1102	\$0	\$0	\$0	\$0	\$0	\$0	\$0	\$0	\$0	\$400	\$0	\$1,600	\$0	\$2,000
GR1104	\$0	\$0	\$0	\$0	\$128,000	\$0	\$0	\$0	\$0	\$0	\$32,000	\$0	\$0	\$160,000
GR1403	\$0	\$0	\$0	\$0	\$0	\$0	\$0	\$0	\$0	\$400	\$0	\$1,600	\$0	\$2,000
GR1408	\$0	\$0	\$150,400	\$0	\$0	\$0	\$0	\$0	\$0	\$302,800	\$0	\$1,060,800	\$0	\$1,514,000
GR1501	\$1,200,000	\$0	\$0	\$0	\$0	\$0	\$0	\$0	\$300,000	\$0	\$0	\$0	\$0	\$1,500,000
GR1601	\$0	\$0	\$0	\$0	\$0	\$0	\$0	\$320,000	\$80,000	\$0	\$0	\$0	\$0	\$400,000
GR1602	\$0	\$0	\$0	\$0	\$0	\$4,500	\$0	\$0	\$0	\$500	\$0	\$0	\$0	\$5,000
MO1105	\$0	\$0	\$0	\$0	\$0	\$0	\$0	\$0	\$0	\$284,000	\$0	\$0	\$0	\$284,000
MO1201	\$0	\$65,800	\$0	\$0	\$0	\$0	\$0	\$0	\$0	\$8,200	\$0	\$0	\$0	\$74,000
MO1404	\$0	\$0	\$0	\$0	\$0	\$12,800	\$0	\$0	\$0	\$3,200	\$0	\$0	\$0	\$16,000
MO1505	\$0	\$0	\$0	\$800	\$0	\$0	\$0	\$0	\$0	\$200	\$0	\$0	\$0	\$1,000
MO1601	\$0	\$46,900	\$0	\$0	\$0	\$0	\$0	\$0	\$0	\$4,100	\$0	\$0	\$0	\$51,000
MO1603	\$300,000	\$0	\$0	\$0	\$0	\$0	\$0	\$0	\$75,000	\$134,600	\$0	\$538,400	\$0	\$1,048,000
MO1604	\$0	\$711,000	\$0	\$0	\$0	\$0	\$0	\$0	\$0	\$79,000	\$0	\$0	\$0	\$790,000
MO1605	\$0	\$0	\$0	\$0	\$0	\$0	\$0	\$0	\$0	\$37,800	\$0	\$151,200	\$0	\$189,000
MO1606	\$0	\$0	\$0	\$0	\$0	\$194,400	\$0	\$0	\$0	\$21,600	\$0	\$0	\$0	\$216,000
MO1607	\$0	\$0	\$0	\$0	\$0	\$8,000	\$0	\$0	\$0	\$2,000	\$0	\$0	\$0	\$10,000
MO1608	\$0	\$900	\$0	\$0	\$0	\$0	\$0	\$0	\$0	\$100	\$0	\$0	\$0	\$1,000
MO1609	\$0	\$0	\$0	\$0	\$0	\$0	\$0	\$0	\$0	\$2,000	\$0	\$8,000	\$0	\$10,000
MO1610	\$0	\$0	\$0	\$0	\$0	\$0	\$0	\$0	\$0	\$2,000	\$0	\$8,000	\$0	\$10,000
MO1611	\$0	\$0	\$0	\$0	\$0	\$0	\$0	\$0	\$0	\$2,000	\$0	\$8,000	\$0	\$10,000

FY 2016 continued on next page

# FINANCIAL SUMMARY

## Roadways

### YEARLY SUMMARY

	Federal								Local	State			Other	
PROJECT	FHWA (STP-U)	FHWA (SAFETY)	FHWA (BRIDGE)	FHWA (STP)	FHWA (130)	FHWA (NHPP)	FHWA (HPP)	FHWA (BRO)	LOCAL	MoDOT	MoDOT GCSA	MoDOT-AC	OTHER	TOTAL
<b>FY 2016 continued</b>														
MO1612	\$0	\$0	\$0	\$0	\$0	\$5,600	\$0	\$0	\$0	\$1,400	\$0	\$0	\$0	\$7,000
MO1613	\$0	\$0	\$0	\$800	\$0	\$0	\$0	\$0	\$0	\$200	\$0	\$0	\$0	\$1,000
MO1614	\$0	\$0	\$0	\$1,600	\$0	\$0	\$0	\$0	\$0	\$400	\$0	\$0	\$0	\$2,000
MO1615	\$0	\$0	\$0	\$3,200	\$0	\$0	\$0	\$0	\$0	\$800	\$0	\$0	\$0	\$4,000
MO1616	\$0	\$0	\$0	\$0	\$0	\$10,400	\$0	\$0	\$0	\$2,600	\$0	\$0	\$0	\$13,000
MO1617	\$0	\$200,700	\$0	\$0	\$0	\$0	\$0	\$0	\$0	\$22,300	\$0	\$0	\$0	\$223,000
MO1618	\$0	\$156,600	\$0	\$0	\$0	\$0	\$0	\$0	\$0	\$17,400	\$0	\$0	\$0	\$174,000
MO1619	\$0	\$0	\$0	\$118,400	\$0	\$0	\$0	\$0	\$0	\$29,600	\$0	\$0	\$0	\$148,000
MO1705	\$0	\$0	\$0	\$1,600	\$0	\$0	\$0	\$0	\$0	\$400	\$0	\$0	\$0	\$2,000
NX0601	\$949,612	\$0	\$0	\$0	\$0	\$0	\$0	\$0	\$1,188,388	\$0	\$0	\$0	\$0	\$2,138,000
NX0906	\$1,307,001	\$0	\$0	\$0	\$0	\$0	\$0	\$0	\$326,750	\$344,200	\$0	\$1,376,800	\$0	\$3,354,751
OK1401	\$0	\$0	\$0	\$0	\$0	\$0	\$0	\$0	\$0	\$400	\$0	\$1,600	\$0	\$2,000
RG0901	\$0	\$0	\$0	\$0	\$0	\$0	\$0	\$0	\$0	\$400	\$0	\$1,600	\$0	\$2,000
RG1201	\$0	\$0	\$0	\$0	\$0	\$800	\$0	\$0	\$0	\$200	\$0	\$0	\$0	\$1,000
RP1401	\$0	\$0	\$0	\$0	\$0	\$178,400	\$0	\$0	\$0	\$44,600	\$0	\$0	\$0	\$223,000
RP1502	\$209,120	\$0	\$0	\$0	\$0	\$0	\$0	\$0	\$52,280	\$0	\$0	\$0	\$0	\$261,400
SP1018	\$0	\$0	\$4,726,400	\$0	\$0	\$0	\$0	\$0	\$0	\$1,181,600	\$0	\$0	\$0	\$5,908,000
SP1106	\$0	\$0	\$0	\$1,600	\$0	\$0	\$0	\$0	\$0	\$800	\$0	\$1,600	\$0	\$4,000
SP1109	\$391,612	\$0	\$0	\$0	\$2,250,000	\$255,200	\$0	\$0	\$0	\$754,624	\$750,000	\$0	\$343,000	\$4,744,436
SP1112	\$0	\$0	\$0	\$0	\$0	\$64,000	\$0	\$0	\$0	\$16,000	\$0	\$0	\$0	\$80,000
SP1204	\$0	\$0	\$0	\$0	\$0	\$1,600	\$0	\$0	\$0	\$400	\$0	\$0	\$0	\$2,000
SP1209	\$0	\$0	\$0	\$12,618	\$0	\$0	\$0	\$0	\$3,155	\$0	\$0	\$0	\$0	\$15,773
SP1321	\$10,000	\$0	\$0	\$0	\$0	\$0	\$0	\$0	\$3,984	\$0	\$0	\$0	\$0	\$13,984
SP1323	\$681,000	\$0	\$0	\$0	\$0	\$147,200	\$0	\$0	\$905,541	\$112,915	\$0	\$484,440	\$0	\$2,331,096
SP1401	\$0	\$0	\$0	\$0	\$0	\$20,800	\$0	\$0	\$0	\$5,200	\$0	\$0	\$0	\$26,000
SP1405	\$0	\$0	\$0	\$0	\$0	\$0	\$0	\$0	\$0	\$400	\$0	\$1,600	\$0	\$2,000
SP1409	\$0	\$258,000	\$0	\$0	\$0	\$7,257,000	\$0	\$0	\$0	\$835,000	\$0	\$0	\$0	\$8,350,000
SP1410	\$0	\$0	\$0	\$0	\$0	\$0	\$0	\$0	\$0	\$2,903,200	\$0	\$11,612,800	\$0	\$14,516,000
SP1415	\$0	\$0	\$0	\$0	\$0	\$218,000	\$0	\$0	\$0	\$54,000	\$0	\$0	\$0	\$272,000
SP1502	\$0	\$0	\$0	\$0	\$0	\$0	\$0	\$0	\$0	\$4,000	\$0	\$0	\$0	\$4,000
SP1601	\$0	\$0	\$0	\$0	\$0	\$281,600	\$0	\$0	\$0	\$70,400	\$0	\$0	\$0	\$352,000
SP1602	\$0	\$0	\$0	\$0	\$0	\$48,000	\$0	\$0	\$0	\$12,000	\$0	\$0	\$0	\$60,000
SP1603	\$1,114,589	\$0	\$0	\$0	\$0	\$1,201,921	\$0	\$0	\$0	\$300,480	\$0	\$0	\$0	\$2,616,990
WI1301	\$0	\$0	\$0	\$40,000	\$0	\$0	\$0	\$0	\$0	\$10,000	\$0	\$0	\$0	\$50,000
SUBTOTAL	\$6,162,934	\$1,439,900	\$4,876,800	\$180,618	\$2,378,000	\$9,910,221	\$0	\$320,000	\$2,935,098	\$7,611,219	\$782,000	\$15,259,640	\$343,000	\$52,199,430



# FINANCIAL SUMMARY

## Roadways

### YEARLY SUMMARY

	Federal								Local	State			Other	
PROJECT	FHWA (STP-U)	FHWA (SAFETY)	FHWA (BRIDGE)	FHWA (STP)	FHWA (130)	FHWA (NHPP)	FHWA (HPP)	FHWA (BRO)	LOCAL	MoDOT	MoDOT GCSA	MoDOT-AC	OTHER	TOTAL
<b>FY 2017</b>														
CC0901	\$0	\$0	\$0	\$0	\$0	\$0	\$0	\$0	\$0	\$400	\$0	\$1,600	\$0	\$2,000
CC1102	\$0	\$0	\$0	\$0	\$0	\$0	\$0	\$0	\$0	\$400	\$0	\$1,600	\$0	\$2,000
GR1403	\$0	\$0	\$0	\$0	\$0	\$0	\$0	\$0	\$0	\$400	\$0	\$1,600	\$0	\$2,000
GR1602	\$0	\$0	\$0	\$0	\$0	\$513,000	\$0	\$0	\$0	\$57,000	\$0	\$0	\$0	\$570,000
MO1105	\$0	\$0	\$0	\$0	\$0	\$0	\$0	\$0	\$0	\$284,000	\$0	\$0	\$0	\$284,000
MO1404	\$0	\$0	\$0	\$0	\$0	\$207,200	\$0	\$0	\$0	\$51,800	\$0	\$0	\$0	\$259,000
MO1505	\$0	\$0	\$0	\$800	\$0	\$0	\$0	\$0	\$0	\$200	\$0	\$0	\$0	\$1,000
MO1607	\$0	\$0	\$0	\$0	\$0	\$8,000	\$0	\$0	\$0	\$2,000	\$0	\$0	\$0	\$10,000
MO1608	\$0	\$39,600	\$0	\$0	\$0	\$0	\$0	\$0	\$0	\$4,400	\$0	\$0	\$0	\$44,000
MO1609	\$0	\$0	\$0	\$0	\$0	\$0	\$0	\$0	\$0	\$2,000	\$0	\$8,000	\$0	\$10,000
MO1610	\$0	\$0	\$0	\$0	\$0	\$0	\$0	\$0	\$0	\$2,000	\$0	\$8,000	\$0	\$10,000
MO1611	\$0	\$0	\$0	\$0	\$0	\$0	\$0	\$0	\$0	\$2,000	\$0	\$8,000	\$0	\$10,000
MO1612	\$0	\$0	\$0	\$0	\$0	\$1,600	\$0	\$0	\$0	\$400	\$0	\$0	\$0	\$2,000
MO1613	\$0	\$0	\$0	\$800	\$0	\$0	\$0	\$0	\$0	\$200	\$0	\$0	\$0	\$1,000
MO1614	\$0	\$0	\$0	\$1,600	\$0	\$0	\$0	\$0	\$0	\$400	\$0	\$0	\$0	\$2,000
MO1615	\$0	\$0	\$0	\$1,600	\$0	\$0	\$0	\$0	\$0	\$400	\$0	\$0	\$0	\$2,000
MO1616	\$0	\$0	\$0	\$0	\$0	\$1,600	\$0	\$0	\$0	\$400	\$0	\$0	\$0	\$2,000
MO1617	\$0	\$1,800	\$0	\$0	\$0	\$0	\$0	\$0	\$0	\$200	\$0	\$0	\$0	\$2,000
MO1618	\$0	\$1,800	\$0	\$0	\$0	\$0	\$0	\$0	\$0	\$200	\$0	\$0	\$0	\$2,000
MO1619	\$0	\$0	\$0	\$1,600	\$0	\$0	\$0	\$0	\$0	\$400	\$0	\$0	\$0	\$2,000
MO1701	\$315,000	\$0	\$0	\$0	\$0	\$0	\$0	\$0	\$78,750	\$134,600	\$0	\$538,400	\$0	\$1,066,750
MO1705	\$0	\$0	\$0	\$155,200	\$0	\$0	\$0	\$0	\$0	\$38,800	\$0	\$0	\$0	\$194,000
OK1401	\$0	\$0	\$0	\$0	\$0	\$0	\$0	\$0	\$0	\$400	\$0	\$1,600	\$0	\$2,000
RG0901	\$0	\$0	\$0	\$0	\$0	\$0	\$0	\$0	\$0	\$400	\$0	\$1,600	\$0	\$2,000
RG1201	\$0	\$0	\$0	\$0	\$0	\$800	\$0	\$0	\$0	\$200	\$0	\$0	\$0	\$1,000
RP1502	\$1,702,503	\$0	\$0	\$0	\$0	\$0	\$0	\$0	\$496,128	\$0	\$0	\$0	\$0	\$2,198,631
SP1106	\$0	\$0	\$0	\$1,600	\$0	\$0	\$0	\$0	\$0	\$400	\$0	\$0	\$0	\$2,000
SP1112	\$0	\$0	\$0	\$0	\$0	\$144,000	\$0	\$0	\$0	\$36,000	\$0	\$0	\$0	\$180,000
SP1204	\$0	\$0	\$0	\$0	\$0	\$32,800	\$0	\$0	\$0	\$8,200	\$0	\$0	\$0	\$41,000
SP1401	\$0	\$0	\$0	\$0	\$0	\$405,200	\$0	\$0	\$0	\$100,800	\$0	\$0	\$0	\$506,000
SP1405	\$0	\$0	\$0	\$0	\$0	\$0	\$0	\$0	\$0	\$400	\$0	\$1,600	\$0	\$2,000
SP1415	\$1,089,292	\$0	\$0	\$0	\$0	\$1,373,908	\$0	\$0	\$271,823	\$343,977	\$0	\$0	\$0	\$3,079,000
SP1602	\$0	\$0	\$0	\$0	\$0	\$6,890,400	\$0	\$0	\$0	\$1,722,600	\$0	\$0	\$0	\$8,613,000
WI1301	\$0	\$0	\$0	\$643,200	\$0	\$0	\$0	\$0	\$0	\$160,800	\$0	\$0	\$0	\$804,000
SUBTOTAL	\$3,106,795	\$43,200	\$0	\$806,400	\$0	\$9,578,508	\$0	\$0	\$846,701	\$2,956,777	\$0	\$572,000	\$0	\$17,910,381

# FINANCIAL SUMMARY

## Roadways

### YEARLY SUMMARY

	Federal								Local	State			Other	
PROJECT	FHWA (STP-U)	FHWA (SAFETY)	FHWA (BRIDGE)	FHWA (STP)	FHWA (130)	FHWA (NHPP)	FHWA (HPP)	FHWA (BRO)	LOCAL	MoDOT	MoDOT GCSA	MoDOT-AC	OTHER	TOTAL
<b>FY 2018</b>														
CC0901	\$0	\$0	\$0	\$0	\$0	\$0	\$0	\$0	\$0	\$400	\$0	\$1,600	\$0	\$2,000
CC1102	\$0	\$0	\$0	\$0	\$0	\$0	\$0	\$0	\$0	\$400	\$0	\$1,600	\$0	\$2,000
GR1403	\$0	\$0	\$0	\$0	\$0	\$0	\$0	\$0	\$0	\$400	\$0	\$1,600	\$0	\$2,000
MO1105	\$0	\$0	\$0	\$0	\$0	\$0	\$0	\$0	\$0	\$284,000	\$0	\$0	\$0	\$284,000
MO1505	\$0	\$0	\$0	\$159,200	\$0	\$0	\$0	\$0	\$0	\$39,800	\$0	\$0	\$0	\$199,000
MO1607	\$0	\$0	\$0	\$0	\$0	\$24,800	\$0	\$0	\$0	\$6,200	\$0	\$0	\$0	\$31,000
MO1609	\$0	\$0	\$0	\$0	\$0	\$0	\$0	\$0	\$0	\$2,000	\$0	\$8,000	\$0	\$10,000
MO1610	\$0	\$0	\$0	\$0	\$0	\$0	\$0	\$0	\$0	\$2,000	\$0	\$8,000	\$0	\$10,000
MO1611	\$0	\$0	\$0	\$0	\$0	\$0	\$0	\$0	\$0	\$2,000	\$0	\$8,000	\$0	\$10,000
MO1801	\$331,000	\$0	\$0	\$0	\$0	\$0	\$0	\$0	\$82,750	\$134,600	\$0	\$538,400	\$0	\$1,086,750
OK1401	\$0	\$0	\$0	\$0	\$0	\$0	\$0	\$0	\$0	\$400	\$0	\$1,600	\$0	\$2,000
RG0901	\$0	\$0	\$0	\$0	\$0	\$0	\$0	\$0	\$0	\$400	\$0	\$1,600	\$0	\$2,000
RG1201	\$0	\$0	\$0	\$0	\$0	\$800	\$0	\$0	\$0	\$200	\$0	\$0	\$0	\$1,000
SP1106	\$0	\$0	\$0	\$1,289,600	\$0	\$0	\$0	\$0	\$1,179,000	\$297,400	\$0	\$0	\$0	\$2,766,000
SP1112	\$0	\$0	\$0	\$0	\$0	\$2,801,066	\$166,134	\$0	\$0	\$741,800	\$0	\$0	\$0	\$3,709,000
SP1204	\$0	\$0	\$0	\$0	\$0	\$717,400	\$0	\$0	\$0	\$179,400	\$0	\$0	\$0	\$896,800
SP1405	\$0	\$0	\$0	\$0	\$0	\$0	\$0	\$0	\$0	\$400	\$0	\$1,600	\$0	\$2,000
<b>SUBTOTAL</b>	<b>\$331,000</b>	<b>\$0</b>	<b>\$0</b>	<b>\$1,448,800</b>	<b>\$0</b>	<b>\$3,544,066</b>	<b>\$166,134</b>	<b>\$0</b>	<b>\$1,261,750</b>	<b>\$1,691,800</b>	<b>\$0</b>	<b>\$572,000</b>	<b>\$0</b>	<b>\$9,015,550</b>
<b>GRAND TOTAL</b>	<b>\$14,939,729</b>	<b>\$2,483,700</b>	<b>\$5,124,800</b>	<b>\$3,572,715</b>	<b>\$3,751,967</b>	<b>\$25,934,493</b>	<b>\$166,134</b>	<b>\$1,824,800</b>	<b>\$7,915,601</b>	<b>\$17,325,296</b>	<b>\$1,911,968</b>	<b>\$37,338,496</b>	<b>\$469,065</b>	<b>\$122,758,764</b>

# FINANCIAL CONSTRAINT

## Roadways

	Federal Funding Source													
	STP-U	Safety	Bridge	STP	130	NHPP	HPP	BRO	TOTAL Federal Funds	Local	MoDOT Programmed Funds	Other	State Operations and Maintenance	TOTAL
2015 Funds Programmed	\$5,339,000	\$1,000,600	\$248,000	\$1,136,897	\$1,373,967	\$2,901,698	\$0	\$1,504,800	\$13,504,962	\$2,872,052	\$27,130,324	\$126,065	\$6,525,006	\$50,158,409
2016 Funds Programmed	\$6,162,934	\$1,439,900	\$4,876,800	\$180,618	\$2,378,000	\$9,910,221	\$0	\$320,000	\$25,268,473	\$2,935,098	\$23,652,859	\$343,000	\$665,506	\$52,864,936
2017 Funds Programmed	\$3,106,795	\$43,200	\$0	\$806,400	\$0	\$9,578,508	\$0	\$0	\$13,534,903	\$846,701	\$3,528,777	\$0	\$6,788,616	\$24,698,997
2018 Funds Programmed	\$331,000	\$0	\$0	\$1,448,800	\$0	\$3,544,066	\$166,134	\$0	\$5,490,000	\$1,261,750	\$2,263,800	\$0	\$6,924,388	\$15,939,938
<b>Total</b>	<b>\$ 14,939,729</b>	<b>\$ 2,483,700</b>	<b>\$ 5,124,800</b>	<b>\$ 3,572,715</b>	<b>\$ 3,751,967</b>	<b>\$ 25,934,493</b>	<b>\$ 166,134</b>	<b>\$ 1,824,800</b>	<b>\$ 57,798,338</b>	<b>\$ 7,915,601</b>	<b>\$ 56,575,760</b>	<b>\$ 469,065</b>	<b>\$ 20,903,516</b>	<b>\$143,662,280</b>

	Prior Year	FY 2015	FY 2016	FY 2017	FY 2018	TOTAL
Available State and Federal Funding	\$24,201,377	\$27,240,000	\$25,680,000	\$8,750,000	\$8,090,000	\$93,961,377
Available Operations and Maintenance Funding	\$ -	\$6,525,006	\$665,506	\$6,788,616	\$6,924,388	\$20,903,516
Available Suballocated STP-U/Small Urban	\$23,213,240	\$5,410,663	\$5,414,570	\$4,599,063	\$4,599,063	\$43,236,599
Available Suballocated BRM	\$1,542,036	\$338,170	\$338,170	\$338,170	\$338,170	\$2,894,716
<b>TOTAL AVAILABLE FUNDING</b>	<b>\$48,956,653</b>	<b>\$39,513,839</b>	<b>\$32,098,246</b>	<b>\$20,475,849</b>	<b>\$19,951,621</b>	<b>\$160,996,208</b>
Prior Year Funding	\$ -	\$48,956,653	\$41,310,200	\$23,821,608	\$20,445,161	--
Programmed State and Federal Funding	\$ -	(\$47,160,292)	(\$49,586,838)	(\$23,852,296)	(\$14,678,188)	(\$135,277,614)
<b>TOTAL REMAINING</b>	<b>\$48,956,653</b>	<b>\$41,310,200</b>	<b>\$23,821,608</b>	<b>\$20,445,161</b>	<b>\$25,718,594</b>	<b>\$25,718,594</b>

Remaining State and Federal Funding	(\$5,472,992)
Remaining Suballocated STP-Urban/Small Urban	\$28,296,870
Remaining Suballocated BRM	\$2,894,716
<b>TOTAL REMAINING</b>	<b>\$25,718,594</b>