



U.S. Department of Transportation

Federal Transit Administration
901 Locust, Room 404
Kansas City, MO 64106
816-329-3920
816-329-3921 (fax)

Federal Highway Administration
3220 W. Edgewood, Suite H
Jefferson City, MO 65109
573-636-7104
573-636-9283 (fax)

January 16, 2014

Mr. Dave Nichols, Director
Missouri Department of Transportation
P.O. Box 270
Jefferson City, Missouri 65102

Re: FHWA Approval of "Highway Project Only" Amendment to the Missouri FY 2014-2018 State Transportation Improvement Program (STIP) for the Springfield Metropolitan Planning Area Amendment #1 of the FY 2014-2017 Transportation Improvement Program (TIP)

Dear Mr. Nichols:

The Federal Highway Administration (FHWA) has reviewed the Missouri Department of Transportation's (MoDOT) request to incorporate the Ozarks Transportation Organization's (OTO) modification of their FY 2014-2017 Transportation Improvement Program (TIP), as further described in your letter of January 16, 2014, as an amendment to the FY 2014-2018 Missouri Statewide Transportation Improvement Program (STIP). The amendment is for the addition of two new MoDOT sponsored roadway projects, one new MoDOT scoping project and the modification of two MoDOT roadway and bridge projects and modification of one City of Battlefield sponsored roadway project.

The OTO Board of Directors approved the TIP amendment on December 19, 2014. The Missouri Governor approved the OTO amendment on January 16, 2014.

In accordance with 23 CFR 450.218(b), we have determined that this STIP amendment is based on a transportation planning process that substantially meets the requirements of 23 U.S.C 134 and 135, 49 U.S.C. 5303 and 5304 and 23 CFR 450 Subparts A, B, and C. Based on our review, this STIP amendment request is approved.

If you have any questions, please contact Mr. Brad McMahon at FHWA (573) 638-2609.

Sincerely,

For: Kevin Ward, P.E.
Division Administrator
FHWA Missouri Division

cc: Sara Fields, OTO
Machelle Watkins, MoDOT
Ben Reeser, MoDOT
Eva Voss, MoDOT
Frank Miller, MoDOT Southwest District
Mark Bechtel, FTA Region VII
Sharon Monroe, MoDOT



OZARKS TRANSPORTATION ORGANIZATION
A METROPOLITAN PLANNING ORGANIZATION

205 PARK CENTRAL EAST, SUITE 205 SPRINGFIELD, MO 65806 417-865-3042 [p] 417-862-6013 [f]

19 December 2013

Ms. Eva Voss
Transportation Planning
Missouri Department of Transportation
P. O. Box 270
Jefferson City, Missouri 65102

Dear Ms. Voss:

We respectfully request the approval of the FY 2014-2017 Ozarks Transportation Organization Transportation Improvement Program (TIP) Amendment Number One. The Board of Directors adopted this amendment on December 19, 2013. The adoption included demonstration of fiscal constraint as required by federal regulations. Public comment was taken in accordance with federal law and in accordance with the OTO Public Involvement Policy and no public comment was received. This amendment includes the following six (6) changes. A description and additional TIP information is included with this letter.

- ADA Accommodations on Glenstone and Sunshine
- Weaver Road Widening
- Republic Road Bridges over James River
- Republic Road and Farm Road 107 Intersection
- Glenstone and Pythian Intersection
- Kansas Expressway Pavement Rehabilitation

Please find enclosed the requested TIP amendment. Please let me know if you need any other information.

Sincerely,

Natasha L. Longpine, AICP
Principal Planner



OZARKSTRANSPORTATION.ORG

Amendment Number One to the FY 2014-2017 Transportation Improvement Program

Ozarks Transportation Organization (Springfield, MO Area MPO)

DESCRIPTION:

There are six items to be included as part of TIP Amendment Number One to the FY 2014-2017 Transportation Improvement Program.

1. ADA Accommodations on Glenstone and Sunshine (SP1413)

MoDOT is requesting to increase project funds and add funds from the City of Springfield who is now cost sharing on this project. The original project cost was \$411,000 and the programmed total is now \$760,000.

2. Weaver Road Widening (BA1401)

The City of Battlefield is requesting to program the additional costs of utility relocation in the Weaver Road Widening project. This increases the total programmed amount by \$80,874 to \$330,874.

3. Republic Road Bridges over James River (SP1213)

MoDOT is requesting to add construction funding and City of Springfield inspection funding for the west bridge on Republic Road over James River Freeway. This takes the current programmed amount of \$230,000 and increases it to \$3,898,500.

4. *New* Republic Road and Farm Road 107 Intersection (GR1407)

MoDOT is requesting to add a new project for intersection improvements at Republic Road (Route M) and Farm Road 107. MoDOT will be funding the engineering and City Utilities, the construction. The total programmed amount for this project is \$168,000.

5. *New* Glenstone and Pythian Intersection (SP1416)

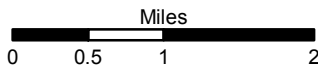
MoDOT is requesting to add a scoping project for the Glenstone and Pythian intersection at a programmed total of \$8,000, utilizing all state funds.

6. *New* Kansas Expressway Pavement Rehabilitation (SP1417)

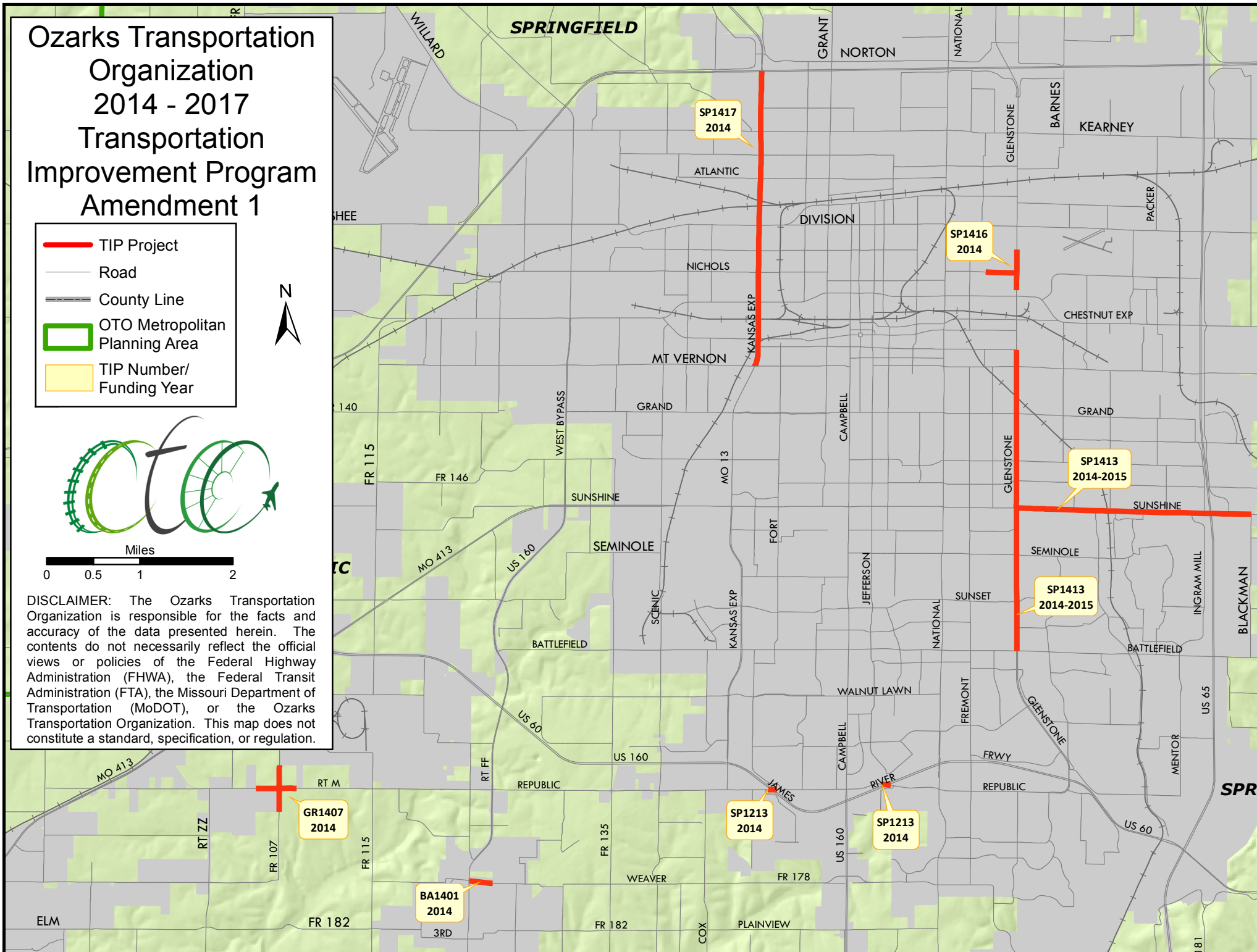
MoDOT is requesting the addition of a project for pavement rehabilitation and concrete repair on Kansas Expressway between I-44 and Mount Vernon. This is a complimentary project to SP1316, which includes asphalt overlay on portions of Kansas Expressway between I-44 and the James River Freeway. The total programmed amount requested for SP1417 is \$1,999,080.

Ozarks Transportation Organization 2014 - 2017 Transportation Improvement Program Amendment 1

- TIP Project
- Road
- County Line
- OTO Metropolitan Planning Area
- TIP Number/
Funding Year



DISCLAIMER: The Ozarks Transportation Organization is responsible for the facts and accuracy of the data presented herein. The contents do not necessarily reflect the official views or policies of the Federal Highway Administration (FHWA), the Federal Transit Administration (FTA), the Missouri Department of Transportation (MoDOT), or the Ozarks Transportation Organization. This map does not constitute a standard, specification, or regulation.





Transportation Improvement Program - FY 2014-2017

Project Detail by Section and Project Number with Map

D) Bicycle & Pedestrian Section

TIP # SP1413 ADA ACCOMMODATIONS ON GLENSTONE AND SUNSHINE

Route Bus. 65 and Rte. D

From Walnut, Glenstone

To

Battlefield Rd., Blackman Rd.

Location/Agency City of Springfield

Federal Agency FHWA

Responsible Agency MoDOT

Federal Funding Category NHPP(NHS)

MoDOT Funding Category Major Projects and Emerging Needs

AC Year of Conv. FY 2015

STIP #

8S3024

Project Description

ADA accommdations at various locations of Glenstone Avenue (Bus. 65) from Walnut Street to Battlefield Road and on Sunshine Street (Rte. D) from Glenstone Avenue to Blackman Road.



Fund Code	Source	Phase	FY2014	FY2015	FY2016	FY2017	Total
FHWA (NHS)	Federal	ENG	\$0	\$49,600	\$0	\$0	\$49,600
MoDOT	State	ENG	\$0	\$-49,600	\$0	\$0	\$-49,600
MoDOT	State	ENG	\$62,000	\$0	\$0	\$0	\$62,000
FHWA (NHS)	Federal	CON	\$0	\$279,200	\$0	\$0	\$279,200
MoDOT	State	CON	\$0	\$-279,200	\$0	\$0	\$-279,200
MoDOT	State	CON	\$349,000	\$0	\$0	\$0	\$349,000
Totals			\$411,000	\$0	\$0	\$0	\$411,000

ORIGINAL

Notes

Source of state funds: State transportation revenues. Advance construction with anticipated conversion in FY 2015.

Prior Cost	\$0
Future Cost	\$0
Total Cost	\$411,000



Transportation Improvement Program - FY 2014-2017

Project Detail by Section and Project Number with Map

D) Bicycle & Pedestrian Section

TIP # SP1413 ADA ACCOMMODATIONS ON GLENSTONE AND SUNSHINE

Route Bus. 65 and Rte. D

From Walnut, Glenstone

To Battlefield Rd., Blackman Rd.

Location/Agency City of Springfield

Federal Agency FHWA

Responsible Agency MoDOT

Federal Funding Category NHPP(NHS)

MoDOT Funding Category Major Projects and Emerging Needs

AC Year of Conv. FY 2015

STIP # 8S3024

Project Description

ADA accommdations at various locations of Glenstone Avenue (Bus. 65) from Walnut Street to Battlefield Road and on Sunshine Street (Rte. D) from Glenstone Avenue to Blackman Road.



Fund Code	Source	Phase	FY2014	FY2015	FY2016	FY2017	Total
FHWA (NHS)	Federal	ENG	\$0	\$49,600	\$0	\$0	\$49,600
MoDOT	State	ENG	\$0	\$-49,600	\$0	\$0	\$-49,600
MoDOT	State	ENG	\$62,000	\$0	\$0	\$0	\$62,000
FHWA (NHS)	Federal	CON	\$0	\$279,200	\$0	\$0	\$279,200
LOCAL	Local	CON	\$349,000	\$0	\$0	\$0	\$349,000
MoDOT	State	CON	\$0	\$-279,200	\$0	\$0	\$-279,200
MoDOT	State	CON	\$349,000	\$0	\$0	\$0	\$349,000
Totals			\$760,000	\$0	\$0	\$0	\$760,000

Notes

Cost Share with the City of Springfield. Source of state funds: State transportation revenues and City of Springfield local funds. Advance construction with anticipated conversion in FY 2015.

Prior Cost	\$0
Future Cost	\$0
Total Cost	\$760,000



Transportation Improvement Program - FY 2014-2017

Project Detail by Section and Project Number with Map

E) Roadways Section

TIP # BA1401 WEAVER ROAD WIDENING

Route Weaver Rd.

From Wilson Creek School

To State Highway FF

Location/Agency City of Battlefield

Federal Agency FHWA

Responsible Agency City of Battlefield

Federal Funding Category STP-U

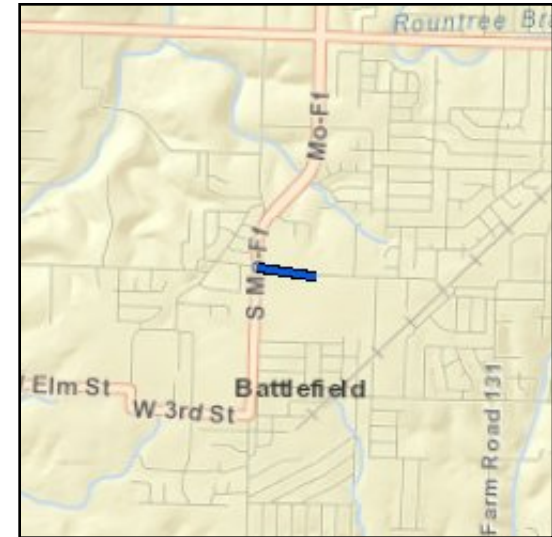
MoDOT Funding Category None

AC Year of Conv.

STIP #

Project Description

Widen Weaver Rd from Wilson Creek Elementary to St. Hwy FF. This will create safer passage for school buses and other large vehicles.



Fund Code	Source	Phase	FY2014	FY2015	FY2016	FY2017	Total
FHWA (STP-U)	Federal	CON	\$200,000	\$0	\$0	\$0	\$200,000
LOCAL	Local	CON	\$50,000	\$0	\$0	\$0	\$50,000
Totals			\$250,000	\$0	\$0	\$0	\$250,000

ORIGINAL

Notes

Funding source: Battlefield STP-U

Prior Cost	\$0
Future Cost	\$0
Total Cost	\$250,000



Transportation Improvement Program - FY 2014-2017

Project Detail by Section and Project Number with Map

E) Roadways Section

TIP # BA1401 WEAVER ROAD WIDENING

Route Weaver Rd.

From Wilson Creek School

To State Highway FF

Location/Agency City of Battlefield

Federal Agency FHWA

Responsible Agency City of Battlefield

Federal Funding Category STP-U

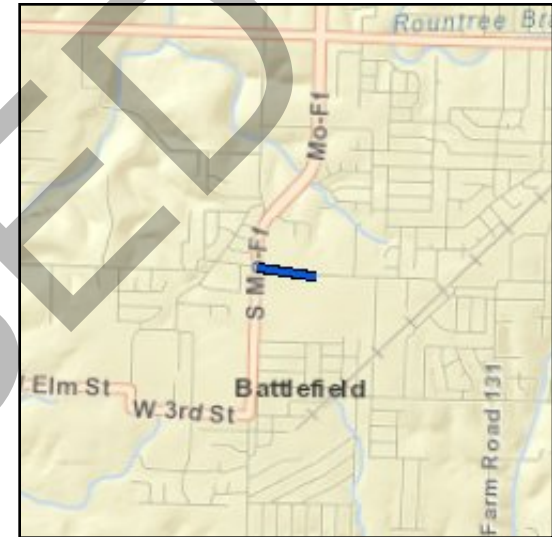
MoDOT Funding Category None

AC Year of Conv.

STIP #

Project Description

Widen Weaver Rd from Wilson Creek Elementary to St. Hwy FF. This will create safer passage for school buses and other large vehicles.



Fund Code	Source	Phase	FY2014	FY2015	FY2016	FY2017	Total
FHWA (STP-U)	Federal	CON	\$264,699	\$0	\$0	\$0	\$264,699
LOCAL	Local	CON	\$66,175	\$0	\$0	\$0	\$66,175
Totals			\$330,874	\$0	\$0	\$0	\$330,874

Notes

Funding source: Battlefield STP-U

Prior Cost	\$0
Future Cost	\$0
Total Cost	\$330,874



Transportation Improvement Program - FY 2014-2017

Project Detail by Section and Project Number with Map

E) Roadways Section

TIP # SP1213 **REPUBLIC ROAD BRIDGES OVER JAMES RIVER**

Route Republic Road

From Republic Road

To James River Freeway

Location/Agency City of Springfield

Federal Agency FHWA

Responsible Agency MoDOT

Federal Funding Category STP

MoDOT Funding Category Major Projects and Emerging Needs

AC Year of Conv. FY 2015

STIP # 8P3003

Project Description

Improvements to the Republic Road bridges over the James River Freeway (Route 60) 0.6 miles east of Kansas Expressway (Route 13) and 0.5 miles east of Campbell Avenue (Route 160).



Fund Code	Source	Phase	FY2014	FY2015	FY2016	FY2017	Total
FHWA (STP)	Federal	ENG	\$0	\$184,000	\$0	\$0	\$184,000
MoDOT	State	ENG	\$0	\$-184,000	\$0	\$0	\$-184,000
MoDOT	State	ENG	\$230,000	\$0	\$0	\$0	\$230,000
Totals			\$230,000	\$0	\$0	\$0	\$230,000

ORIGINAL

Notes

Source of MoDOT Funds: State transportation revenues. Source of Local funds: City of Springfield 1/8 Cent Transportation Sales tax. Previously programmed funds of \$200,000. Advance Construction for Engineering funding with anticipated conversion in 2015.

Prior Cost	\$200,000
Future Cost	\$4,700,000
Total Cost	\$5,130,000



Transportation Improvement Program - FY 2014-2017

Project Detail by Section and Project Number with Map

E) Roadways Section

TIP # SP1213 **REPUBLIC ROAD BRIDGES OVER JAMES RIVER**

Route Republic Road

From Republic Road

To

James River Freeway

Location/Agency City of Springfield

Federal Agency FHWA

Responsible Agency MoDOT

Federal Funding Category STP

MoDOT Funding Category Major Projects and Emerging Needs

AC Year of Conv. FY 2015

STIP #

8P3003

Project Description

Improvements to the Republic Road bridges over the James River Freeway (Route 60) 0.6 miles east of Kansas Expressway (Route 13) and 0.5 miles east of Campbell Avenue (Route 160).



Fund Code	Source	Phase	FY2014	FY2015	FY2016	FY2017	Total
FHWA (STP)	Federal	ENG	\$0	\$184,000	\$0	\$0	\$184,000
LOCAL	Local	ENG	\$168,750	\$0	\$0	\$0	\$168,750
MoDOT	State	ENG	\$0	\$-184,000	\$0	\$0	\$-184,000
MoDOT	State	ENG	\$230,000	\$0	\$0	\$0	\$230,000
FHWA (STP-U)	Federal	CON	\$2,584,800	\$0	\$0	\$0	\$2,584,800
LOCAL	Local	CON	\$914,950	\$0	\$0	\$0	\$914,950
Totals			\$3,898,500	\$0	\$0	\$0	\$3,898,500

Notes

Source of MoDOT Funds: State transportation revenues. Source of Local funds: City of Springfield 1/8 Cent Transportation Sales tax and STP-Urban funds. Previously programmed funds of \$200,000. Advance Construction for Engineering funding with anticipated conversion in 2015.

Prior Cost	\$200,000
Future Cost	\$0
Total Cost	\$4,098,500



Transportation Improvement Program - FY 2014-2017

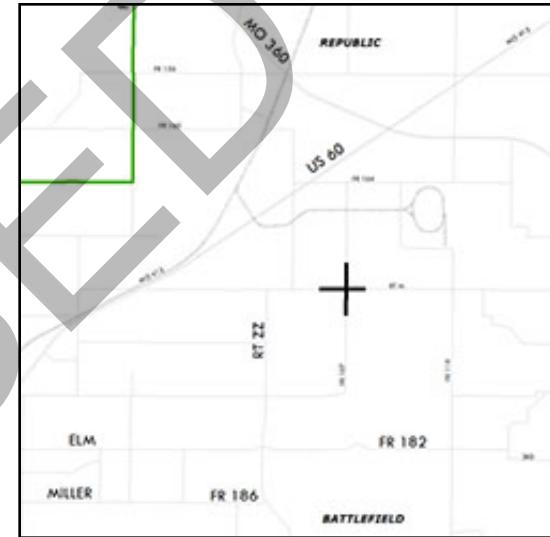
Project Detail by Section and Project Number with Map

E) Roadways Section

TIP # GR1407 REPUBLIC ROAD AND FARM ROAD 107 INTERSECTION
Route Route M (Republic Road)
From Route M **To** Farm Road 107
Location/Agency Greene County
Federal Agency None
Responsible Agency MoDOT
Federal Funding Category None
MoDOT Funding Category Major Projects and Emerging Needs
AC Year of Conv. **STIP #** 8S3037

Project Description

Intersection improvements at Route M (Republic Road) and Farm Road 107.



Fund Code	Source	Phase	FY2014	FY2015	FY2016	FY2017	Total
MoDOT	State	ENG	\$18,000	\$0	\$0	\$0	\$18,000
LOCAL	Local	CON	\$150,000	\$0	\$0	\$0	\$150,000
Totals			\$168,000	\$0	\$0	\$0	\$168,000

Notes

Construction funded by City Utilities of Springfield. Engineering by MoDOT. Source of funds: City Utilities electricity production revenues and MoDOT operating budget.

Prior Cost	\$0
Future Cost	\$0
Total Cost	\$168,000



Transportation Improvement Program - FY 2014-2017

Project Detail by Section and Project Number with Map

E) Roadways Section

TIP # SP1416 **GLENSTONE AND PYTHIAN INTERSECTION**

Route Loop 44

From Glenstone

To Pythian

Location/Agency City of Springfield

Federal Agency FHWA

Responsible Agency MoDOT

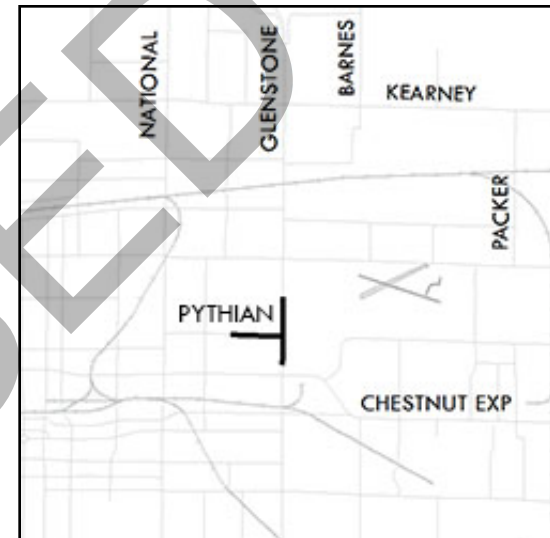
Federal Funding Category STP

MoDOT Funding Category Major Projects and Emerging Needs

AC Year of Conv. **STIP #** 8P3041

Project Description

Scoping for intersection improvements at Glenstone and Pythian.



Fund Code	Source	Phase	FY2014	FY2015	FY2016	FY2017	Total
MoDOT	State	ENG	\$8,000	\$0	\$0	\$0	\$8,000
Totals			\$8,000	\$0	\$0	\$0	\$8,000

Notes

Prior Cost	\$0
Future Cost	\$0
Total Cost	\$8,000



Transportation Improvement Program - FY 2014-2017

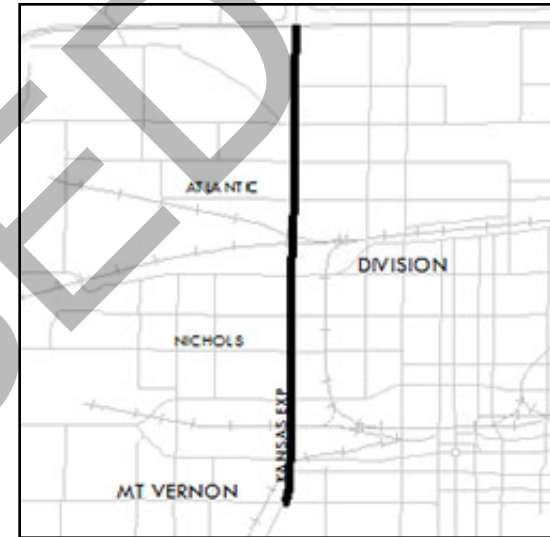
Project Detail by Section and Project Number with Map

E) Roadways Section

TIP # SP1417 **KANSAS EXPRESSWAY PAVEMENT REHABILITATION**
Route 13
From I-44 **To** Mt. Vernon Street
Location/Agency City of Springfield
Federal Agency FHWA
Responsible Agency MoDOT
Federal Funding Category NHPP(NHS)
MoDOT Funding Category Cost Share Program
AC Year of Conv. FY 2015 **STIP #** 8P3042

Project Description

Pavement improvements on various sections of Kansas Expressway from I-44 to Mt. Vernon Street.



Fund Code	Source	Phase	FY2014	FY2015	FY2016	FY2017	Total
MoDOT	State	ENG	\$261,000	\$0	\$0	\$0	\$261,000
FHWA (STP-U)	Federal	CON	\$799,517	\$0	\$0	\$0	\$799,517
LOCAL	Local	CON	\$199,879	\$0	\$0	\$0	\$199,879
MoDOT	State	CON	\$738,684	\$0	\$0	\$0	\$738,684
Totals			\$1,999,080	\$0	\$0	\$0	\$1,999,080

Notes

Cost Share with the City of Springfield (pending Cost Share application for 11.15.2013). Advance Construction with anticipated conversion in FY 2015.

Prior Cost	\$0
Future Cost	\$0
Total Cost	\$1,999,080

FINANCIAL SUMMARY

Bicycle & Pedestrian

YEARLY SUMMARY

	Federal					Local	State	
PROJECT	FHWA (STP)	FHWA (NHS)	FHWA (TE)	FHWA (TAP)	FHWA (SRTS)	LOCAL	MoDOT	TOTAL
FY 2014								
EN1302	\$0	\$0	\$0	\$240,000	\$0	\$60,000	\$0	\$300,000
EN1304	\$32,800	\$0	\$0	\$165,587	\$0	\$0	\$79,166	\$277,553
EN1305	\$0	\$0	\$220,413	\$0	\$0	\$179,587	\$0	\$400,000
EN1306	\$0	\$0	\$320,000	\$0	\$0	\$80,000	\$0	\$400,000
EN1307	\$0	\$0	\$200,000	\$0	\$0	\$50,000	\$0	\$250,000
EN1309	\$0	\$0	\$0	\$0	\$152,973	\$0	\$0	\$152,973
MO1309	\$0	\$0	\$0	\$0	\$0	\$0	\$25,000	\$25,000
SP1412	\$0	\$0	\$0	\$0	\$0	\$0	\$29,000	\$29,000
SP1413	\$0	\$0	\$0	\$0	\$0	\$349,000	\$411,000	\$760,000
SP1414	\$0	\$0	\$0	\$0	\$0	\$0	\$22,000	\$22,000
SUBTOTAL	\$32,800	\$0	\$740,413	\$405,587	\$152,973	\$718,587	\$566,166	\$2,616,526
FY 2015								
MO1309	\$20,000	\$0	\$0	\$0	\$0	\$0	\$5,000	\$25,000
SP1412	\$0	\$23,000	\$0	\$0	\$0	\$0	\$321,000	\$344,000
SP1413	\$0	\$328,800	\$0	\$0	\$0	\$0	(\$328,800)	\$0
SP1414	\$17,600	\$0	\$0	\$0	\$0	\$0	\$244,400	\$262,000
SUBTOTAL	\$37,600	\$351,800	\$0	\$0	\$0	\$0	\$241,600	\$631,000
FY 2016								
MO1309	\$20,000	\$0	\$0	\$0	\$0	\$0	\$5,000	\$25,000
SP1412	\$0	\$275,200	\$0	\$0	\$0	\$0	(\$275,200)	\$0
SP1414	\$209,600	\$0	\$0	\$0	\$0	\$0	(\$209,600)	\$0
SUBTOTAL	\$229,600	\$275,200	\$0	\$0	\$0	\$0	(\$479,800)	\$25,000
FY 2017								
MO1309	\$0	\$20,000	\$0	\$0	\$0	\$0	(\$15,000)	\$5,000
SUBTOTAL	\$0	\$20,000	\$0	\$0	\$0	\$0	(\$15,000)	\$5,000
GRAND TOTAL	\$300,000	\$647,000	\$740,413	\$405,587	\$152,973	\$718,587	\$312,966	\$3,277,526

A1

FINANCIAL CONSTRAINTS
Bicycle and Pedestrian

	STP	NHS	TE	TAP	SRTS	MoDOT	Local	TOTAL
PRIOR YEAR								
Balance	\$0	\$0	\$740,413	\$405,587	\$152,973	\$0	\$0	\$1,298,973
2014								
Funds Anticipated	\$32,800	\$0	\$ -	\$632,629	\$ -	\$566,166	\$718,587	\$1,950,182
Funds Programmed	(\$32,800)	\$0	(\$740,413)	(\$405,587)	(\$152,973)	(\$566,166)	(\$718,587)	\$(2,616,526)
Running Balance	\$0	\$0	\$0	\$632,629	\$0	\$0	\$0	\$632,629
2015								
Funds Anticipated	\$37,600	\$351,800	\$ -	\$ 632,629	\$ -	\$241,600	\$ -	\$1,263,629
Funds Programmed	(\$37,600)	(\$351,800)	\$ -	\$ -	\$ -	(\$241,600)	\$ -	\$ (631,000)
Running Balance	\$0	\$0	\$0	\$1,265,258	\$0	\$0	\$0	\$1,265,258
2016								
Funds Anticipated	\$229,600	\$275,200	\$ -	\$ 632,629	\$ -	(\$479,800)	\$ -	\$657,629
Funds Programmed	(\$229,600)	(\$275,200)	\$ -	\$ -	\$ -	\$479,800	\$ -	\$ (25,000)
Running Balance	\$0	\$0	\$0	\$1,897,887	\$0	\$0	\$0	\$1,897,887
2017								
Funds Anticipated	\$ -	\$20,000	\$ -	\$ 632,629	\$ -	(\$15,000)	\$ -	\$637,629
Funds Programmed	\$ -	(\$20,000)	\$ -	\$ -	\$ -	\$15,000	\$ -	\$ (5,000)
Running Balance	\$0	\$0	\$0	\$2,530,516	\$0	\$0	\$0	\$2,530,516

FINANCIAL SUMMARY

Roadways

YEARLY SUMMARY

PROJECT	Federal									Local	State		TOTAL
	FHWA (STP-U)	FHWA (SAFETY)	FHWA (BRIDGE)	FHWA (STP)	FHWA (I/M)	FHWA (130)	FHWA (NHS)	FHWA (BRM)	FHWA (BRO)	LOCAL	MoDOT	MoDOT-GCSA	
FY 2014													
BA1401	\$264,699	\$0	\$0	\$0	\$0	\$0	\$0	\$0	\$0	\$66,175	\$0	\$0	\$330,874
CC0901	\$0	\$0	\$0	\$0	\$0	\$0	\$0	\$0	\$0	\$0	\$2,000	\$0	\$2,000
CC1102	\$0	\$0	\$0	\$0	\$0	\$0	\$0	\$0	\$0	\$0	\$2,000	\$0	\$2,000
CC1110	\$228,000	\$0	\$0	\$0	\$0	\$0	\$0	\$0	\$0	\$100,000	\$386,000	\$0	\$714,000
CC1201	\$0	\$1,759,500	\$0	\$0	\$0	\$0	\$0	\$0	\$0	\$0	\$195,500	\$0	\$1,955,000
CC1202	\$0	\$200,400	\$0	\$0	\$0	\$0	\$0	\$0	\$0	\$0	\$22,600	\$0	\$223,000
CC1203	\$0	\$0	\$0	\$0	\$0	\$0	\$320,000	\$0	\$0	\$0	\$33,000	\$0	\$353,000
CC1301	\$0	\$50,000	\$0	\$0	\$0	\$0	\$0	\$0	\$0	\$0	\$189,000	\$0	\$239,000
CC1302	\$0	\$891,000	\$0	\$0	\$0	\$0	\$0	\$0	\$0	\$0	\$99,000	\$0	\$990,000
CC1303	\$0	\$184,000	\$0	\$0	\$0	\$0	\$0	\$0	\$0	\$0	\$1,686,000	\$0	\$1,870,000
CC1304	\$0	\$101,700	\$0	\$0	\$0	\$0	\$0	\$0	\$0	\$0	\$11,300	\$0	\$113,000
CC1305	\$0	\$143,100	\$0	\$0	\$0	\$0	\$0	\$0	\$0	\$0	\$15,900	\$0	\$159,000
CC1306	\$0	\$0	\$0	\$2,387,200	\$0	\$0	\$0	\$0	\$0	\$0	(\$2,387,200)	\$0	\$0
CC1401	\$0	\$270,900	\$0	\$0	\$0	\$0	\$0	\$0	\$0	\$0	\$30,100	\$0	\$301,000
GR1010	\$0	\$0	\$0	\$0	\$0	\$0	\$0	\$0	\$0	\$0	\$1,160,000	\$0	\$1,160,000
GR1104	\$0	\$0	\$0	\$0	\$0	\$80,000	\$0	\$0	\$0	\$0	\$0	\$20,000	\$100,000
GR1206	\$0	\$0	\$2,008,000	\$0	\$0	\$0	\$0	\$0	\$0	\$0	\$502,000	\$0	\$2,510,000
GR1213	\$0	\$0	\$0	\$0	\$0	\$0	\$0	\$0	\$1,133,600	\$283,400	\$0	\$0	\$1,417,000
GR1303	\$0	\$0	\$0	\$3,588,800	\$0	\$0	\$0	\$0	\$0	\$0	(\$3,588,800)	\$0	\$0
GR1304	\$0	\$0	\$0	\$0	\$0	\$0	\$0	\$0	\$0	\$0	\$26,000	\$0	\$26,000
GR1305	\$0	\$0	\$0	\$0	\$0	\$0	\$0	\$0	\$0	\$0	\$2,785,000	\$0	\$2,785,000
GR1306	\$0	\$0	\$0	\$0	\$0	\$0	\$0	\$0	\$0	\$0	\$1,839,000	\$0	\$1,839,000
GR1308	\$0	\$0	\$0	\$0	\$0	\$0	\$0	\$0	\$0	\$0	\$0	\$0	\$0
GR1309	\$0	\$0	\$0	\$0	\$0	\$0	\$52,852	\$0	\$0	\$0	(\$52,852)	\$0	\$0
GR1311	\$0	\$0	\$0	\$0	\$0	\$0	\$0	\$0	\$168,000	\$42,000	\$0	\$0	\$210,000
GR1312	\$0	\$0	\$0	\$0	\$0	\$0	\$0	\$0	\$371,200	\$92,800	\$0	\$0	\$464,000
GR1401	\$0	\$0	\$0	\$0	\$0	\$0	\$0	\$0	\$0	\$0	\$314,000	\$0	\$314,000
GR1402	\$0	\$0	\$0	\$0	\$0	\$247,500	\$0	\$0	\$0	\$0	\$169,000	\$27,500	\$444,000
GR1403	\$0	\$0	\$0	\$0	\$0	\$0	\$0	\$0	\$0	\$0	\$2,000	\$0	\$2,000
GR1404	\$0	\$0	\$0	\$0	\$216,000	\$0	\$0	\$0	\$0	\$0	\$0	\$0	\$216,000
GR1405	\$0	\$56,000	\$0	\$0	\$0	\$0	\$0	\$0	\$0	\$0	\$309,000	\$0	\$365,000
GR1406	\$0	\$28,000	\$0	\$0	\$0	\$0	\$0	\$0	\$0	\$0	\$689,000	\$0	\$717,000
GR1407	\$0	\$0	\$0	\$0	\$0	\$0	\$0	\$0	\$0	\$150,000	\$18,000	\$0	\$168,000
MO1105	\$0	\$0	\$0	\$0	\$0	\$0	\$0	\$0	\$0	\$0	\$284,000	\$0	\$284,000
MO1150	\$0	\$0	\$0	\$0	\$0	\$0	\$0	\$0	\$0	\$0	\$193,000	\$0	\$193,000
MO1201	\$0	\$900	\$0	\$0	\$0	\$0	\$0	\$0	\$0	\$0	\$100	\$0	\$1,000
MO1401	\$0	\$0	\$0	\$0	\$0	\$0	\$0	\$0	\$0	\$0	\$52,000	\$0	\$52,000
MO1403	\$268,000	\$0	\$0	\$0	\$0	\$0	\$0	\$0	\$0	\$67,000	\$673,000	\$0	\$1,008,000
MO1404	\$0	\$0	\$0	\$0	\$0	\$0	\$0	\$0	\$0	\$0	\$2,000	\$0	\$2,000
MO1405	\$0	\$0	\$0	\$0	\$0	\$0	\$0	\$0	\$0	\$0	\$25,000	\$0	\$25,000
MO1406	\$0	\$0	\$0	\$0	\$0	\$0	\$0	\$0	\$0	\$0	\$10,000	\$0	\$10,000
MO1407	\$0	\$0	\$0	\$0	\$0	\$0	\$0	\$0	\$0	\$0	\$660,000	\$0	\$660,000
MO1408	\$0	\$0	\$0	\$0	\$0	\$0	\$0	\$0	\$0	\$0	\$3,000	\$0	\$3,000
MO1409	\$0	\$0	\$0	\$0	\$0	\$0	\$0	\$0	\$0	\$0	\$2,000	\$0	\$2,000
MO1410	\$0	\$0	\$0	\$12,000	\$0	\$0	\$0	\$0	\$0	\$0	\$3,000	\$0	\$15,000
MO1411	\$0	\$0	\$0	\$16,000	\$0	\$0	\$0	\$0	\$0	\$0	\$4,000	\$0	\$20,000
MO1501	\$0	\$0	\$0	\$0	\$0	\$0	\$0	\$0	\$0	\$0	\$2,000	\$0	\$2,000
MO1505	\$0	\$0	\$0	\$0	\$0	\$0	\$0	\$0	\$0	\$0	\$2,000	\$0	\$2,000
MO1605	\$0	\$0	\$0	\$0	\$0	\$0	\$0	\$0	\$0	\$0	\$2,000	\$0	\$2,000
MO1705	\$0	\$0	\$0	\$0	\$0	\$0	\$0	\$0	\$0	\$0	\$2,000	\$0	\$2,000
NX0701	\$301,920	\$0	\$0	\$0	\$0	\$0	\$0	\$0	\$0	\$75,480	\$0	\$0	\$377,400
NX0703	\$76,000	\$0	\$0	\$0	\$0	\$0	\$0	\$0	\$0	\$19,000	\$0	\$0	\$95,000
NX0801	\$0	\$0	\$0	\$0	\$0	\$0	\$0	\$0	\$0	\$175,000	\$0	\$0	\$175,000
NX0803	\$0	\$0	\$0	\$0	\$0	\$0	\$0	\$0	\$0	\$1,313,314	\$0	\$0	\$1,313,314
NX0906	\$0	\$0	\$0	\$0	\$0	\$0	\$0	\$0	\$0	\$0	\$2,000	\$0	\$2,000
NX1401	\$0	\$0	\$0	\$0	\$0	\$0	\$0	\$0	\$0	\$188,700	\$0	\$0	\$188,700
OK1006	\$0	\$0	\$0	\$535,200	\$0	\$0	\$0	\$0	\$0	\$0	(\$535,200)	\$0	\$0
OK1401	\$0	\$0	\$0	\$0	\$0	\$0	\$0	\$0	\$0	\$0	\$2,000	\$0	\$2,000
RG0901	\$0	\$0	\$0	\$0	\$0	\$0	\$0	\$0	\$0	\$0	\$2,000	\$0	\$2,000
RG1201	\$0	\$0	\$0	\$0	\$0	\$0	\$0	\$0	\$0	\$0	\$1,000	\$0	\$1,000
RP1201	\$0	\$0	\$0	\$0	\$0	\$0	\$217,600	\$0	\$0	\$0	(\$217,600)	\$0	\$0
RP1301	\$0	\$0	\$0	\$0	\$0	\$0	\$0	\$0	\$0	\$0	\$1,683,000	\$0	\$1,683,000
RP1302	\$0	\$0	\$0	\$0	\$0	\$0	\$949,600	\$0	\$0	\$0	(\$949,600)	\$0	\$0
RP1303	\$64,000	\$0	\$0	\$0	\$0	\$0	\$0	\$0	\$0	\$16,000	\$0	\$0	\$80,000

FINANCIAL SUMMARY

Roadways

YEARLY SUMMARY

	Federal									Local	State		
PROJECT	FHWA (STP-U)	FHWA (SAFETY)	FHWA (BRIDGE)	FHWA (STP)	FHWA (I/M)	FHWA (130)	FHWA (NHS)	FHWA (BRM)	FHWA (BRO)	LOCAL	MoDOT	MoDOT-GCSA	TOTAL
FY 2014 continued													
RP1305	\$0	\$0	\$0	\$0	\$0	\$0	\$182,400	\$0	\$0	\$0	(\$182,400)	\$0	\$0
RP1401	\$0	\$0	\$0	\$0	\$0	\$0	\$0	\$0	\$0	\$0	\$2,000	\$0	\$2,000
SP1018	\$0	\$0	\$80,000	\$0	\$0	\$0	\$0	\$0	\$0	\$0	\$20,000	\$0	\$100,000
SP1021	\$0	\$0	\$0	\$660,000	\$0	\$0	\$0	\$0	\$0	\$0	(\$660,000)	\$0	\$0
SP1106	\$0	\$0	\$0	\$0	\$0	\$0	\$0	\$0	\$0	\$0	\$5,000	\$0	\$5,000
SP1108	\$2,791,367	\$0	\$0	\$0	\$0	\$0	\$512,000	\$1,189,657	\$0	\$4,153,300	\$3,961,475	\$0	\$12,607,799
SP1109	\$0	\$0	\$0	\$2,067,400	\$0	\$0	\$24,000	\$0	\$0	\$2,000,000	\$56,000	\$0	\$4,147,400
SP1110	\$0	\$0	\$0	\$0	\$0	\$0	\$1,256,800	\$0	\$0	\$0	(\$1,256,800)	\$0	\$0
SP1112	\$0	\$0	\$0	\$0	\$0	\$0	\$0	\$0	\$0	\$0	\$5,000	\$0	\$5,000
SP1122	\$0	\$0	\$0	\$29,480	\$0	\$0	\$0	\$0	\$0	\$0	\$0	\$0	\$29,480
SP1202	\$0	\$0	\$0	\$0	\$0	\$0	\$1,175,200	\$0	\$0	\$0	(\$1,175,200)	\$0	\$0
SP1203	\$0	\$0	\$0	\$819,200	\$0	\$0	\$0	\$0	\$0	\$0	(\$819,200)	\$0	\$0
SP1204	\$0	\$0	\$0	\$0	\$0	\$0	\$0	\$0	\$0	\$0	\$2,000	\$0	\$2,000
SP1206	\$0	\$129,000	\$0	\$0	\$0	\$0	\$55,200	\$0	\$0	\$0	\$542,800	\$0	\$727,000
SP1209	\$0	\$0	\$0	\$499,915	\$0	\$0	\$0	\$0	\$0	\$124,979	\$0	\$0	\$624,894
SP1213	\$2,584,800	\$0	\$0	\$0	\$0	\$0	\$0	\$0	\$0	\$1,083,700	\$230,000	\$0	\$3,898,500
SP1302	\$0	\$0	\$0	\$0	\$0	\$80,000	\$0	\$0	\$0	\$0	\$0	\$20,000	\$100,000
SP1306	\$0	\$0	\$0	\$0	\$0	\$160,000	\$0	\$0	\$0	\$0	\$40,000	\$0	\$200,000
SP1312	\$0	\$0	\$0	\$0	\$0	\$0	\$0	\$0	\$0	\$0	\$2,312,000	\$0	\$2,312,000
SP1313	\$3,105,258	\$0	\$0	\$0	\$0	\$0	\$0	\$0	\$0	\$776,269	\$4,532,473	\$0	\$8,414,000
SP1314	\$0	\$0	\$0	\$0	\$0	\$0	\$0	\$0	\$0	\$0	\$1,266,000	\$0	\$1,266,000
SP1315	\$0	\$0	\$0	\$0	\$0	\$0	\$0	\$0	\$0	\$0	\$4,000	\$0	\$4,000
SP1316	\$0	\$0	\$0	\$0	\$0	\$0	\$0	\$0	\$0	\$0	\$17,000	\$0	\$17,000
SP1317	\$0	\$0	\$0	\$0	\$0	\$0	\$0	\$0	\$0	\$0	\$5,000	\$0	\$5,000
SP1318	\$0	\$0	\$0	\$0	\$0	\$0	\$0	\$0	\$0	\$0	\$10,000	\$0	\$10,000
SP1319	\$0	\$0	\$0	\$0	\$0	\$0	\$0	\$0	\$0	\$0	\$999,000	\$0	\$999,000
SP1321	\$10,000	\$0	\$0	\$0	\$0	\$0	\$0	\$0	\$0	\$3,984	\$0	\$0	\$13,984
SP1322	\$0	\$0	\$0	\$0	\$0	\$0	\$0	\$0	\$0	\$1,151,244	\$362,610	\$0	\$1,513,854
SP1323	\$0	\$0	\$0	\$0	\$0	\$0	\$0	\$0	\$0	\$0	\$5,000	\$0	\$5,000
SP1324	\$0	\$0	\$0	\$0	\$0	\$0	\$0	\$0	\$0	\$0	\$469,000	\$0	\$469,000
SP1401	\$0	\$0	\$0	\$0	\$0	\$0	\$0	\$0	\$0	\$0	\$3,000	\$0	\$3,000
SP1403	\$0	\$0	\$0	\$0	\$0	\$0	\$0	\$0	\$0	\$0	\$602,000	\$0	\$602,000
SP1404	\$0	\$0	\$0	\$0	\$0	\$0	\$0	\$0	\$0	\$0	\$390,000	\$0	\$390,000
SP1405	\$0	\$0	\$0	\$0	\$0	\$0	\$0	\$0	\$0	\$0	\$2,000	\$0	\$2,000
SP1407	\$300,000	\$0	\$0	\$0	\$0	\$0	\$0	\$0	\$0	\$142,000	\$780,000	\$0	\$1,222,000
SP1408	\$595,000	\$0	\$0	\$0	\$0	\$0	\$0	\$0	\$0	\$282,000	\$270,000	\$0	\$1,147,000
SP1409	\$0	\$0	\$0	\$0	\$0	\$0	\$0	\$0	\$0	\$0	\$2,000	\$0	\$2,000
SP1410	\$0	\$0	\$0	\$0	\$0	\$0	\$0	\$0	\$0	\$0	\$2,000	\$0	\$2,000
SP1411	\$0	\$0	\$0	\$0	\$0	\$0	\$0	\$0	\$0	\$0	\$6,000	\$0	\$6,000
SP1415	\$0	\$0	\$0	\$0	\$0	\$0	\$0	\$0	\$0	\$0	\$10,000	\$0	\$10,000
SP1416	\$0	\$0	\$0	\$0	\$0	\$0	\$0	\$0	\$0	\$0	\$8,000	\$0	\$8,000
SP1417	\$799,517	\$0	\$0	\$0	\$0	\$0	\$0	\$0	\$0	\$199,879	\$999,684	\$0	\$1,999,080
ST1101	\$0	\$222,000	\$0	\$0	\$0	\$0	\$0	\$0	\$0	\$0	\$544,000	\$0	\$766,000
ST1201	\$0	\$0	\$0	\$0	\$0	\$0	\$0	\$0	\$0	\$0	\$584,000	\$0	\$584,000
ST1401	\$0	\$126,000	\$0	\$0	\$0	\$0	\$0	\$0	\$0	\$0	\$234,000	\$0	\$360,000
WI1201	\$0	\$0	\$0	\$470,200	\$0	\$0	\$0	\$0	\$0	\$0	(\$470,200)	\$0	\$0
WI1301	\$0	\$0	\$0	\$0	\$0	\$0	\$0	\$0	\$0	\$0	\$3,000	\$0	\$3,000
SUBTOTAL	\$11,388,561	\$4,162,500	\$2,088,000	\$11,085,395	\$216,000	\$567,500	\$4,745,652	\$1,189,657	\$1,672,800	\$12,506,224	\$21,085,490	\$67,500	\$70,775,279

FINANCIAL CONSTRAINT
Roadways

	FHWA Federal Funding Source										MoDOT Programmed Funds	State Operations and Maintenance	Local	TOTAL
	STP-U	Safety	Bridge	STP	I/M	130	NHS	BRM	BRO	TOTAL Federal Funds				
2014 Funds Programmed	\$11,388,561	\$4,162,500	\$2,088,000	\$11,085,395	\$216,000	\$567,500	\$4,745,652	\$1,189,657	\$1,672,800	\$37,116,065	\$21,152,990	\$6,293,898	\$12,506,224	\$77,069,177
2015 Funds Programmed	\$3,424,533	\$911,900	\$328,000	\$10,564,709	\$181,800	\$2,206,500	\$17,269,455	\$0	\$0	\$34,886,897	\$10,381,668	\$6,419,776	\$7,428,384	\$59,116,725
2016 Funds Programmed	\$294,000	\$918,000	\$5,137,600	\$3,232,200	\$100,800	\$520,000	\$21,889,240	\$0	\$0	\$32,091,840	(\$2,933,840)	\$6,548,171	\$1,574,984	\$37,281,155
2017 Funds Programmed	\$292,000	\$81,900	\$0	\$1,425,217	\$8,883,900	\$0	\$16,262,378	\$0	\$0	\$26,945,395	\$16,520,978	\$6,679,135	\$73,000	\$17,176,552
Total	\$15,399,094	\$ 6,074,300	\$ 7,553,600	\$26,307,521	\$ 9,382,500	\$ 3,294,000	\$60,166,725	\$1,189,657	\$1,672,800	\$131,040,197	\$ 12,079,840	\$25,940,980	\$21,582,592	\$190,643,609

	Prior Year	2014	2015	2016	2017	TOTAL
Available State and Federal Funding	\$0	\$23,240,000	\$23,620,000	\$28,480,000	\$23,040,000	\$98,380,000
Available Operations and Maintenance Funding	\$0	\$6,293,898	\$6,419,776	\$6,548,171	\$6,679,135	\$25,940,980
Available Suballocated STP-U/Small Urban	\$24,683,089	\$5,414,570	\$5,414,570	\$4,580,384	\$4,580,384	\$44,672,997
Available Suballocated BRM	\$2,201,457	\$386,195	\$386,195	\$386,195	\$386,195	\$3,746,237
TOTAL AVAILABLE FUNDING	\$26,884,546	\$35,334,663	\$35,840,541	\$39,994,750	\$34,685,714	\$172,740,214
Programmed State and Federal Funding	\$0	(\$64,562,953)	(\$51,688,341)	(\$35,706,171)	(\$17,103,552)	(\$169,061,017)
TOTAL REMAINING	\$26,884,546	(\$29,228,290)	(\$15,847,800)	\$4,288,579	\$17,582,162	\$3,679,197

Remaining State and Federal Funding	(\$28,151,286)
Remaining Suballocated STP-Urban/Small Urban	\$29,273,903
Remaining Suballocated BRM	\$2,556,580
TOTAL REMAINING	\$3,679,197

Local Fiscal Constraint	FY2014	FY2015	FY 2016	FY2017
City of Battlefield				
Total Available Revenue	\$175,394.00	\$175,394.00	\$175,394.00	\$175,394.00
Estimated Operations and Maintenance Expenditures	(\$2,540.57)	(\$2,591.38)	(\$2,643.21)	(\$2,696.08)
Estimated TIP Project Expenditures	(\$50,000.00)	(\$2,000.00)	\$0.00	\$0.00
Amendment 1 Expenditures	(\$16,175.00)	\$0.00	\$0.00	\$0.00
Amount Available for Local Projects	\$106,678.43	\$170,802.62	\$172,750.79	\$172,697.92
City of Nixa				
Total Available Revenue (prior reserves included)	\$3,598,269.00	\$1,598,269.00	\$1,598,269.00	\$1,598,269.00
Estimated Operations and Maintenance Expenditures	(\$25,423.97)	(\$25,932.45)	(\$26,451.10)	(\$26,980.12)
Estimated TIP Project Expenditures	(\$1,771,494.00)	(\$3,426,941.00)	(\$1,500,000.00)	\$0.00
Amount Available for Local Projects	\$1,801,351.03	(\$1,854,604.45)	\$71,817.90	\$1,571,288.88
City of Ozark				
Total Available Revenue	\$500,285.00	\$500,285.00	\$500,285.00	\$500,285.00
Estimated Operations and Maintenance Expenditures	(\$60,511.50)	(\$61,721.73)	(\$62,956.16)	(\$64,215.29)
Estimated TIP Project Expenditures	\$0.00	\$0.00	\$0.00	\$0.00
Amount Available for Local Projects	\$439,773.50	\$438,563.27	\$437,328.84	\$436,069.71
City of Republic				
Total Available Revenue	\$1,448,631.00	\$1,448,631.00	\$1,448,631.00	\$1,448,631.00
Estimated Operations and Maintenance Expenditures	(\$37,305.36)	(\$38,051.47)	(\$38,812.50)	(\$39,588.75)
Estimated TIP Project Expenditures	(\$16,000.00)	\$0.00	\$0.00	\$0.00
Amount Available for Local Projects	\$1,395,325.64	\$1,410,579.53	\$1,409,818.50	\$1,409,042.25
City of Springfield				
Total Available Revenue	\$21,308,916.00	\$21,308,916.00	\$21,308,916.00	\$21,308,916.00
Estimated Operations and Maintenance Expenditures	(\$2,358,222.45)	(\$2,405,386.90)	(\$2,453,494.63)	(\$2,502,564.53)
Estimated TIP Project Expenditures	(\$8,742,384.00)	(\$2,442,399.00)	(\$74,984.00)	(\$73,000.00)
Amendment 1 Expenditures	(\$1,632,579)	\$0.00	\$0.00	\$0.00
Amount Available for Local Projects	\$8,575,730.55	\$16,461,130.10	\$18,780,437.37	\$18,733,351.47

Local Fiscal Constraint	FY2014	FY2015	FY 2016	FY2017
City of Strafford				
Total Available Revenue	\$92,676.00	\$92,676.00	\$92,676.00	\$92,676.00
Estimated Operations and Maintenance Expenditures	\$0.00	\$0.00	\$0.00	\$0.00
Estimated TIP Project Expenditures	\$0.00	\$0.00	\$0.00	\$0.00
Amount Available for Local Projects	\$92,676.00	\$92,676.00	\$92,676.00	\$92,676.00
City of Willard				
Total Available Revenue	\$431,950.00	\$431,950.00	\$431,950.00	\$431,950.00
Estimated Operations and Maintenance Expenditures	(\$14,634.00)	(\$14,926.68)	(\$15,225.21)	(\$15,529.72)
Estimated TIP Project Expenditures	\$0.00	\$0.00	\$0.00	\$0.00
Amount Available for Local Projects	\$417,316.00	\$417,023.32	\$416,724.79	\$416,420.28
Christian County				
Total Available Revenue	\$1,519,692.00	\$1,519,692.00	\$1,519,692.00	\$1,519,692.00
Estimated Operations and Maintenance Expenditures	(\$40,162.83)	(\$40,966.09)	(\$41,785.41)	(\$42,621.12)
Estimated TIP Project Expenditures	(\$100,000.00)	(\$1,557,044.00)	\$0.00	\$0.00
Amount Available for Local Projects	\$1,379,529.17	(\$78,318.09)	\$1,477,906.59	\$1,477,070.88
Greene County				
Total Available Revenue	\$21,245,394.00	\$21,245,394.00	\$21,245,394.00	\$21,245,394.00
Estimated Operations and Maintenance Expenditures	(\$109,120.45)	(\$111,302.86)	(\$113,528.92)	(\$115,799.50)
Estimated TIP Project Expenditures	(\$618,200.00)	\$0.00	\$0.00	\$0.00
Amount Available for Local Projects	\$20,518,073.55	\$21,134,091.14	\$21,131,865.08	\$21,129,594.50