



**U.S. Department of Transportation**

**Federal Transit Administration**  
901 Locust, Room 404  
Kansas City, MO 64106  
816-329-3920  
816-329-3921 (fax)

**Federal Highway Administration**  
3220 W. Edgewood, Suite H  
Jefferson City, MO 65109  
573-636-7104  
573-636-9283 (fax)

November 9, 2017

Mr. Patrick McKenna, Director  
Missouri Department of Transportation  
P.O. Box 270  
Jefferson City, Missouri 65102

Re: FHWA Approval of "Highway Only" Amendment to the  
Missouri FY 2018-2022 STIP to incorporate the Ozarks  
Transportation Organization (OTO) FY 2018-2021 Transportation  
Improvement Program (TIP) Amendment #1

Dear Mr. McKenna:

The Federal Highway Administration (FHWA) has reviewed the requested highway only amendment to the FY 2018-2022 Missouri State Transportation Improvement Program (STIP) to incorporate the Ozarks Transportation Organization's (OTO) modification of their FY 2018- 2021 Transportation Improvement Program (TIP), as further described in your letter of November 6, 2017. The TIP amendment is for the modification of four currently programmed MoDOT roadway projects.

The OTO Board of Directors approved the OTO FY2018-2021 TIP amendment on October 19, 2017. The Missouri governor approved the TIP amendment on November 3, 2017.

In accordance with 23 CFR 450.218(b), we have determined that this STIP amendment is based on a transportation planning process that substantially meets the requirements of 23 U.S.C 134 and 135, 49 U.S.C. 5303 and 5304 and 23 CFR 450 Subparts A, B, and C. Based on our review, this STIP amendment request is approved.

If you have any questions, please contact Brad McMahon at FHWA (573) 638-2609.

Sincerely,

For: Kevin W. Ward, P.E.  
Division Administrator  
Federal Highway Administration

cc: Sara Edwards, OTO  
Machelle Watkins, MoDOT  
Eva Voss, MoDOT  
Frank Miller, MoDOT Southwest District  
Sharon Monroe, MoDOT  
Jeremiah Shuler, FTA Region 7

**Missouri Department of Transportation**  
*Patrick K. McKenna, Director*

1.888.ASK MODOT (275.6636)

November 6, 2017

Mr. Kevin Ward  
Division Administrator  
Federal Highway Administration  
3220 West Edgewood, Suite H  
Jefferson City, MO 65109

Dear Mr. Ward:

SUBJECT: Springfield Metropolitan Area  
Ozarks Transportation Organization (OTO)  
FY 2018-2021 Transportation Improvement Program (TIP)  
Approval Request to Incorporate OTO TIP Amendment #1 into FY18-22 STIP

As required by the Fixing America's Surface Transportation (FAST) Act, MoDOT received approval from Governor Greitens for the TIP amendment for the Springfield metropolitan area. The TIP amendment covers modification of four MoDOT project.

Enclosed is a copy of the Governor's approval letter and supporting documentation. The OTO Board of Directors approved the TIP amendment on October 19, 2017. All public involvement considerations were met and fiscal constraint has been ensured.

We request approval of incorporating this TIP amendment into the FY 2018-2022 State Transportation Improvement Program (STIP) at your earliest convenience.

Sincerely,



Eva Voss  
Transportation Planning Specialist

Enclosure

Copies: Brad McMahon-FHWA  
Sara Fields-OTO  
Natasha Longpine-OTO  
Frank Miller-MoDOT



*Our mission is to provide a world-class transportation experience that  
delights our customers and promotes a prosperous Missouri.*

[www.modot.org](http://www.modot.org)



105 West Capitol Avenue  
P.O. Box 270  
Jefferson City, Missouri 65102

**Missouri Department of Transportation**  
*Patrick K. McKenna, Director*

1.888.ASK MODOT (275.6636)

October 26, 2017

The Honorable Eric R. Greitens  
Governor of Missouri  
State Capitol  
Jefferson City, MO 65101

Dear Governor Greitens:

On October 19, 2017, the Ozarks Transportation Organization (OTO) Board of Directors approved an amendment to the FY 2018-2021 Transportation Improvement Plan (TIP) for the Springfield, Missouri, metropolitan area. The TIP amendment covers modification of four MoDOT projects. MoDOT is satisfied the federal requirements have been met in the development of this TIP amendment, including the opportunity for the public to comment on this project. No comments were received.

Enclosed is a copy of the TIP amendment for your review. We request approval of this action at your earliest convenience, so project authorization can proceed in the Springfield metropolitan area.

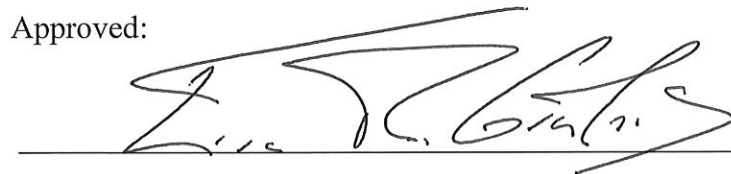
Sincerely,



Patrick K. McKenna  
Director

ev  
Enclosure

Approved:



Date: November 3, 2017

Title: Governor of Missouri



*Our mission is to provide a world-class transportation experience that delights our customers and promotes a prosperous Missouri.*

[www.modot.org](http://www.modot.org)

USE OF REMAINING STIP FUNDS - ARE WE FISCALLY CONSTRAINED?															
Starting Balance		7	13,466	77,445	110,595	164,765	177,827	544,105	60	5,579	30,012	166,831	144,804	213,785	561,071
\$ in Thousands															
Inflated			CHANGE IN			CHANGE IN			CHANGE IN			CHANGE IN			
			Engineering - Internal & DBC Only - STIP funds			Right of Way & Construction & Payments - STIP funds			FFOS						
District	Admin Mods	2017	2018	2019	2020	2021	2022	Sum	2017	2018	2019	2020	2021	2022	Sum
NE	Rural	2P3101						0							0
NE	Rural	2P3166						0							0
CD	Rural	5P3214	-1002	1002				0							0
CD	Rural	9I2167	1262	-1262				0							0
CD	Rural	5P3197	-137	137				0							0
CD	Rural	5P3116	-158	158				0							0
CD	Rural	5P3129	-205	205				0							0
CD	Rural	5P3215	-285	285				0							0
KC	MPO	4I3189	1670	800	200		2,670								0
SL	MPO	6S3267					0								0
SL	MPO	6S2211	-55	55			0								0
District	Admin Amends														
KC	Rural	3P3113	225	500			725								0
KC	Rural	3P3114	-200	-150			-350								0
KC	Rural	3P3124	-25	-75			-100								0
KC	MPO	4S3299	428	200			628								0
SL	MPO	6P3188B	53	90			143								0
SL	MPO	6P3188C	112	168			280								0
SL	MPO	6I3359	50	5			55								0
SW	MPO	8I3044	150	40			190								0
SW	MPO	8P0683E	75	0			75								0
SW	MPO	8P0683G	75	0			75								0
SW	MPO	8P3032	150	98			248								0
SW	MPO	7P3187	-10				-10								0
Amendments															0
District															
None	Rural	None													
None	MPO	None													

	Inflated			CHANGE IN						CHANGE IN						CHANGE IN									
				Engineering - Internal & DBC Only - STIP funds						Right of Way & Construction & Payments - STIP funds						FFOS									
									4,629	check					-350	check									100
		Sum	0	503	3,126	800	200	0	4,629	0	-1,720	1,370	0	0	0	-350	0	-588	688	0	0	0	0	0	100
	Remaining Balance		7	12,963	74,319	109,795	164,565	177,827	539,476							100	-2,192	23,156	45,671	48,295	48,200	163,230			
									539,476																
	Revisions This Month		23						Sum	0	-1,720	1,370	0	0	0	-350									
	Previous Total		99						FFOS	0	-588	688	0	0	0	100									
	SFY Cumulative		122													561,521	check								
								Remaining Balance	60	6,711	29,330	166,831	144,804	213,785	561,521										
								Net	0	6,771	29,330	166,831	144,804	213,785											
									check	ok	ok	ok	ok	ok											
	Rural Amendments		0	0	0	0	0	0	0	0	0	0	0	0	0	0	0	0	0	0	0	0	0	0	0
	MPO Amendments		0	0	0	0	0	0	0	0	0	0	0	0	0	0	0	0	0	0	0	0	0	0	0
	Sum Amendments		0	0	0	0	0	0	0	0	0	0	0	0	0	0	0	0	0	0	0	0	0	0	0
	Rural Ad Amends		0	0	275	0	0	0	275	0	0	0	0	0	0	0	0	0	0	0	0	0	0	0	0
	MPO Ad Amends		0	1,083	601	0	0	0	1,684	0	-50	-351	0	0	0	-401	0	0	0	0	0	0	0	0	0
	Rural Ad Mods		0	-525	525	0	0	0	0	0	-786	810	0	0	0	24	0	-588	618	0	0	0	0	30	
	MPO Ad Mods		0	-55	1,725	800	200	0	2,670	0	-884	911	0	0	0	27	0	0	70	0	0	0	0	70	
	Amend+ AA + AM		0	503	3,126	800	200	0	4,629	0	-1,720	1,370	0	0	0	-350	0	-588	688	0	0	0	0	100	



OZARKS TRANSPORTATION ORGANIZATION  
A METROPOLITAN PLANNING ORGANIZATION

205 PARK CENTRAL EAST, SUITE 205 SPRINGFIELD, MO 65806 417-865-3042 [p] 417-862-6013 [f]

25 October 2017

Ms. Eva Voss  
Transportation Planning  
Missouri Department of Transportation  
P. O. Box 270  
Jefferson City, Missouri 65102

Dear Ms. Voss:

We respectfully request the approval of the FY 2018-2021 Ozarks Transportation Organization Transportation Improvement Program (TIP) Amendment Number One. The Board of Directors adopted this amendment on October 19, 2017. The adoption included demonstration of fiscal constraint as required by federal regulations. Public comment was taken in accordance with federal law and in accordance with the OTO Public Involvement Policy and no public comment was received. This amendment includes four changes that are outlined on the following page.

Please find enclosed the requested TIP amendment. Please let me know if you need any other information.

Sincerely,

Natasha L. Longpine, AICP  
Principal Planner

Enclosure: TIP Approval Packet



OZARKSTRANSPORTATION.ORG

## **Amendment Number One to the FY 2018-2021 Transportation Improvement Program**

### **Ozarks Transportation Organization (Springfield, MO Area MPO)**

#### **DESCRIPTION:**

Four changes are proposed for Amendment Number One to the FY 2018-2021 Transportation Improvement Program.

1. \*Revised\* Scoping for Freeway Improvements on Route 60 East (GR1403-18A1)  
Added funding to FY 2018 to continue scoping freeway improvements on Route 60 between Highland Springs and Farm Road 213 for a total programmed amount of \$115,000 from \$40,000.
2. \*Revised\* Scoping for Interchange at Route 60 and Route 125 (RG0901-18A1)  
Added funding to FY 2018 and modified scope to more generally specify scoping for freeway improvements between Farm Road 213 and Farm Road 247 for a total programmed amount of \$115,000 from \$40,000.
3. \*Revised\* Scoping for James River Freeway Capacity Improvements (SP1405-18A1)  
Added funding to FY 2018-2020 and modified description to include scoping for capacity improvements on James River Freeway from north of I-44 in Republic to Route 65 in Springfield for a total programmed amount of \$252,000 from \$4,000.
4. \*Revised\* Scoping for I-44 Roadway Improvements (SP1419-18A1)  
Added funding to FY 2018 and 2019 and modified description to include scoping from Route 360 north of Republic to Route 125 in Strafford for a total programmed amount of \$230,000 from \$40,000.

#### **TECHNICAL PLANNING COMMITTEE ACTION TAKEN:**

At its regularly scheduled meeting on September 20, 2017, the Technical Planning Committee recommended FY 2018-2021 Transportation Improvement Program Amendment Number One to the Board of Directors.

#### **BOARD OF DIRECTORS ACTION TAKEN:**

At its regularly scheduled meeting on October 19, 2017, the Board of Directors approved FY 2018-2021 Transportation Improvement Program Amendment Number One.



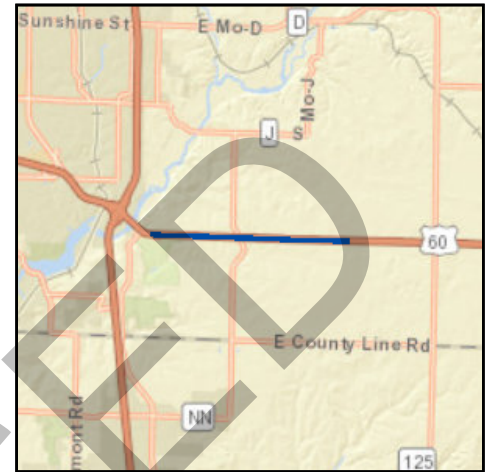
# Transportation Improvement Program - FY 2018-2021

Project Detail by Section and Project Number with Map

## J) Pending Amendment Section

**TIP # GR1403-18A1** SCOPING FOR FREEWAY IMPROVEMENTS ON RTE. 60 EAST

**Route** US 60  
**From** Highland Springs Road  
**To** Farm Road 213  
**Location** Greene County  
**Federal Agency** FHWA  
**Project Sponsor** MoDOT  
**Federal Funding Category** NHPP(NHS)  
**MoDOT Funding Category** Flexible and Other  
**Bike/Ped Plan?** **EJ?** Yes  
**STIP #** 8P0683G  
**Federal ID #** 0602094



### Project Description

Scoping for freeway improvements on Rte. 60 from 0.2 miles west of Highland Springs Road to 0.3 miles east of Farm Road 213.

Fund Code	Source	Phase	FY2018	FY2019	FY2020	FY2021	Total
FHWA (NHPP)	Federal	ENG	\$68,000	\$8,000	\$8,000	\$8,000	\$92,000
MoDOT	State	ENG	\$17,000	\$2,000	\$2,000	\$2,000	\$23,000
<b>Totals</b>			<b>\$85,000</b>	<b>\$10,000</b>	<b>\$10,000</b>	<b>\$10,000</b>	<b>\$115,000</b>

### Notes

Non-Federal Funding Source: State Transportation Revenues

<b>Prior Cost</b>	\$16,000
<b>Future Cost</b>	\$0
<b>Total Cost</b>	\$131,000



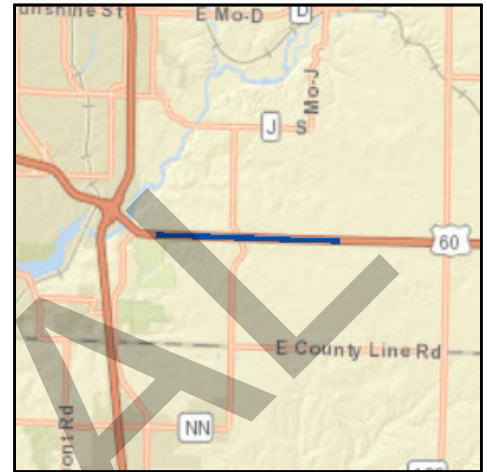
# Transportation Improvement Program - FY 2018-2021

Project Detail by Section and Project Number with Map

## E) Roadways Section

**TIP # GR1403** SCOPING FOR FREEWAY IMPROVEMENTS ON RTE. 60 EAST

**Route** US 60  
**From** Highland Springs Road  
**To** Farm Road 213  
**Location** Greene County  
**Federal Agency** FHWA  
**Project Sponsor** MoDOT  
**Federal Funding Category** NHPP(NHS)  
**MoDOT Funding Category** Flexible and Other  
**Bike/Ped Plan?** **EJ?** Yes  
**STIP #** 8P0683G  
**Federal ID #** 0602094



### Project Description

Scoping for freeway improvements on Rte. 60 from 0.2 miles west of Highland Springs Road to 0.3 miles east of Farm Road 213.

Fund Code	Source	Phase	FY2018	FY2019	FY2020	FY2021	Total
FHWA (NHPP)	Federal	ENG	\$8,000	\$8,000	\$8,000	\$8,000	\$32,000
MoDOT	State	ENG	\$2,000	\$2,000	\$2,000	\$2,000	\$8,000
<b>Totals</b>			<b>\$10,000</b>	<b>\$10,000</b>	<b>\$10,000</b>	<b>\$10,000</b>	<b>\$40,000</b>

### Notes

Non-Federal Funding Source: State Transportation Revenues

<b>Prior Cost</b>	\$16,000
<b>Future Cost</b>	\$0
<b>Total Cost</b>	\$56,000



# Transportation Improvement Program - FY 2018-2021

Project Detail by Section and Project Number with Map

## J) Pending Amendment Section

**TIP #** RG0901-18A1 **SCOPING FOR INTERCHANGE AT ROUTE 60 & ROUTE 125**

**Route** US 60 and Route 125

**From** Farm Road 213

**To** Farm Road 247

**Location** Greene County

**Federal Agency** FHWA

**Project Sponsor** MoDOT

**Federal Funding Category** NHPP(NHS)

**MoDOT Funding Category** Flexible and Other

**Bike/Ped Plan?** **EJ?** Yes

**STIP #** 8P0683E

**Federal ID #** 0602093



### Project Description

Scoping for freeway improvements from Farm Road 213 to Farm Road 247.

Fund Code	Source	Phase	FY2018	FY2019	FY2020	FY2021	Total
FHWA (NHPP)	Federal	ENG	\$68,000	\$8,000	\$8,000	\$8,000	\$92,000
MoDOT	State	ENG	\$17,000	\$2,000	\$2,000	\$2,000	\$23,000
<b>Totals</b>			<b>\$85,000</b>	<b>\$10,000</b>	<b>\$10,000</b>	<b>\$10,000</b>	<b>\$115,000</b>

### Notes

Non-Federal Funding Source: State Transportation Revenues

<b>Prior Cost</b>	\$308,000
<b>Future Cost</b>	\$0
<b>Total Cost</b>	\$423,000



# Transportation Improvement Program - FY 2018-2021

Project Detail by Section and Project Number with Map

## E) Roadways Section

**TIP #** RG0901 **SCOPING FOR INTERCHANGE AT ROUTE 60 & ROUTE 125**

**Route** US 60 and Route 125

**From** Farm Road 213

**To** Farm Road 247

**Location** Greene County

**Federal Agency** FHWA

**Project Sponsor** MoDOT

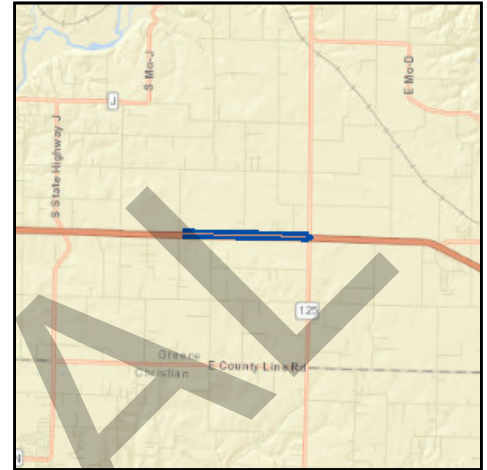
**Federal Funding Category** NHPP(NHS)

**MoDOT Funding Category** Flexible and Other

**Bike/Ped Plan?** **EJ?** Yes

**STIP #** 8P0683E

**Federal ID #** 0602093



### Project Description

Scoping for interchange improvements at Rte. 125 and outer roads from Farm Road 213 to Farm Road 247.

Fund Code	Source	Phase	FY2018	FY2019	FY2020	FY2021	Total
FHWA (NHPP)	Federal	ENG	\$8,000	\$8,000	\$8,000	\$8,000	\$32,000
MoDOT	State	ENG	\$2,000	\$2,000	\$2,000	\$2,000	\$8,000
<b>Totals</b>			<b>\$10,000</b>	<b>\$10,000</b>	<b>\$10,000</b>	<b>\$10,000</b>	<b>\$40,000</b>

### Notes

Non-Federal Funding Source: State Transportation Revenues

<b>Prior Cost</b>	\$308,000
<b>Future Cost</b>	\$0
<b>Total Cost</b>	\$348,000



# Transportation Improvement Program - FY 2018-2021

Project Detail by Section and Project Number with Map

## J) Pending Amendment Section

**TIP #** SP1405-18A1 **SCOPING FOR JAMES RIVER FREEWAY CAPACITY IMPROVEMENTS**

**Route** US 60

**From** Rte. 13

**To** Rte. 65

**Location** City of Springfield

**Federal Agency** FHWA

**Project Sponsor** MoDOT

**Federal Funding Category** NHPP(NHS)

**MoDOT Funding Category** Flexible and Other

**Bike/Ped Plan?** **EJ?** Yes

**STIP #** 8P3032

**Federal ID #** 0602095



### Project Description

Scoping for capacity improvements on James River Freeway from north of I-44 in Republic to Rte. 65 in Springfield.

Fund Code	Source	Phase	FY2018	FY2019	FY2020	FY2021	Total
FHWA (NHPP)	Federal	ENG	\$121,600	\$40,000	\$40,000	\$0	\$201,600
MoDOT	State	ENG	\$30,400	\$10,000	\$10,000	\$0	\$50,400
<b>Totals</b>			<b>\$152,000</b>	<b>\$50,000</b>	<b>\$50,000</b>	<b>\$0</b>	<b>\$252,000</b>

### Notes

Non-Federal Funding Source: State Transportation Revenues

<b>Prior Cost</b>	\$8,000
<b>Future Cost</b>	\$0
<b>Total Cost</b>	\$260,000



# Transportation Improvement Program - FY 2018-2021

Project Detail by Section and Project Number with Map

## E) Roadways Section

**TIP #** SP1405

**SCOPING FOR JAMES RIVER FREEWAY CAPACITY IMPROVEMENTS**

**Route** US 60

**From** Rte. 13

**To** Rte. 65

**Location** City of Springfield

**Federal Agency** FHWA

**Project Sponsor** MoDOT

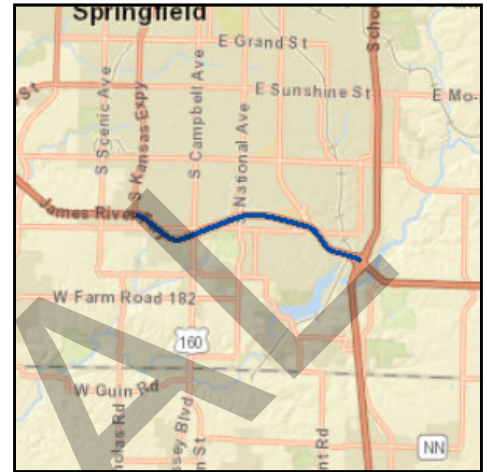
**Federal Funding Category** NHPP(NHS)

**MoDOT Funding Category** Flexible and Other

**Bike/Ped Plan?** **EJ?** Yes

**STIP #** 8P3032

**Federal ID #** 0602095



### Project Description

Scoping for capacity improvements on James River Freeway from Kansas Expressway (Rte. 13) to Rte. 65.

Fund Code	Source	Phase	FY2018	FY2019	FY2020	FY2021	Total
FHWA (NHPP)	Federal	ENG	\$1,600	\$1,600	\$0	\$0	\$3,200
MoDOT	State	ENG	\$400	\$400	\$0	\$0	\$800
<b>Totals</b>			<b>\$2,000</b>	<b>\$2,000</b>	<b>\$0</b>	<b>\$0</b>	<b>\$4,000</b>

### Notes

Non-Federal Funding Source: State Transportation Revenues

<b>Prior Cost</b>	\$8,000
<b>Future Cost</b>	\$0
<b>Total Cost</b>	\$12,000



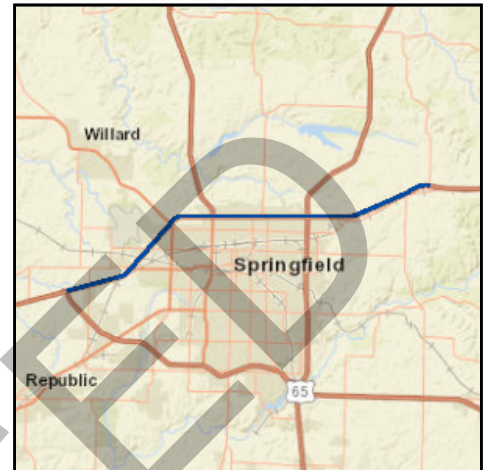
# Transportation Improvement Program - FY 2018-2021

Project Detail by Section and Project Number with Map

## J) Pending Amendment Section

**TIP #** SP1419-18A1 **SCOPING FOR I-44 ROADWAY IMPROVEMENTS**

**Route** I-44  
**From** Chestnut Expressway  
**To** Mulroy Rd.  
**Location** City of Springfield  
**Federal Agency** FHWA  
**Project Sponsor** MoDOT  
**Federal Funding Category** NHPP(I/M)  
**MoDOT Funding Category** Flexible and Other  
**Bike/Ped Plan?** **EJ?** Yes  
**STIP #** 8I3044  
**Federal ID #**



### Project Description

Scoping for roadway improvements from Rte. 360 north of Republic to Rte. 125 in Strafford.

Fund Code	Source	Phase	FY2018	FY2019	FY2020	FY2021	Total
FHWA (I/M)	Federal	ENG	\$128,000	\$40,000	\$9,000	\$9,000	\$186,000
MoDOT	State	ENG	\$32,000	\$10,000	\$1,000	\$1,000	\$44,000
<b>Totals</b>			<b>\$160,000</b>	<b>\$50,000</b>	<b>\$10,000</b>	<b>\$10,000</b>	<b>\$230,000</b>

### Notes

Non-Federal Funding Source: State Transportation Revenues

<b>Prior Cost</b>	\$10,000
<b>Future Cost</b>	\$0
<b>Total Cost</b>	\$240,000



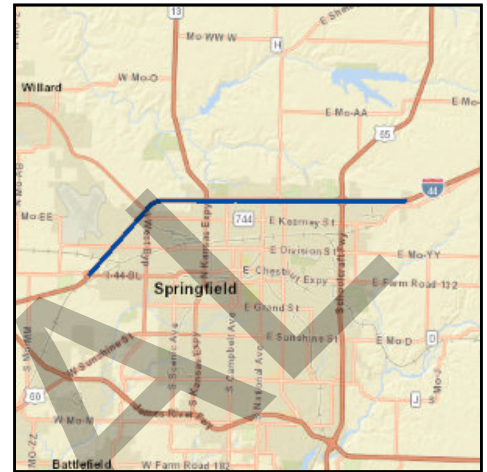
# Transportation Improvement Program - FY 2018-2021

Project Detail by Section and Project Number with Map

## E) Roadways Section

**TIP #** SP1419 **SCOPING FOR I-44 ROADWAY IMPROVEMENTS**

**Route** I-44  
**From** Chestnut Expressway  
**To** Mulroy Rd.  
**Location** City of Springfield  
**Federal Agency** FHWA  
**Project Sponsor** MoDOT  
**Federal Funding Category** NHPP(I/M)  
**MoDOT Funding Category** Flexible and Other  
**Bike/Ped Plan?** **EJ?** **Yes**  
**STIP #** 8I3044  
**Federal ID #**



### Project Description

Scoping for roadway improvements on I-44 from Chestnut Expressway (Loop 44) to Mulroy Rd. (Rte. 744) in Springfield.

Fund Code	Source	Phase	FY2018	FY2019	FY2020	FY2021	Total
FHWA (I/M)	Federal	ENG	\$9,000	\$9,000	\$9,000	\$9,000	\$36,000
MoDOT	State	ENG	\$1,000	\$1,000	\$1,000	\$1,000	\$4,000
<b>Totals</b>			<b>\$10,000</b>	<b>\$10,000</b>	<b>\$10,000</b>	<b>\$10,000</b>	<b>\$40,000</b>

### Notes

Non-Federal Funding Source: State Transportation Revenues

<b>Prior Cost</b>	\$10,000
<b>Future Cost</b>	\$0
<b>Total Cost</b>	\$50,000

# FINANCIAL SUMMARY

## Roadways

### YEARLY SUMMARY

	Federal												Local	State				
PROJECT	FHWA (STBG-U)	FHWA (SAFETY)	FHWA (BRIDGE)	FHWA (STBG)	FHWA (VM)	FHWA (130)	FHWA (NHS)	FHWA (BRM)	FHWA (BRO)	FHWA (NHPP)	FHWA (HPP)	FEMA	LOCAL	MoDOT	MoDOT-GCSA	MoDOT-AC	SEMA	TOTAL
2018																		
BA1801-18	\$0	\$0	\$0	\$0	\$0	\$0	\$0	\$0	\$0	\$1,600	\$0	\$0	\$0	\$400	\$0	\$0	\$0	\$2,000
CC0901	\$0	\$0	\$0	\$1,600	\$0	\$0	\$0	\$0	\$0	\$0	\$0	\$0	\$0	\$400	\$0	\$0	\$0	\$2,000
CC1102	\$0	\$0	\$0	\$0	\$0	\$0	\$0	\$0	\$0	\$1,680,000	\$0	\$0	\$0	\$420,000	\$0	\$0	\$0	\$2,100,000
CC1601	\$0	\$900	\$0	\$0	\$0	\$0	\$0	\$0	\$0	\$0	\$0	\$0	\$0	\$100	\$0	\$0	\$0	\$1,000
CC1701	\$0	\$0	\$0	\$457,600	\$0	\$0	\$0	\$0	\$0	\$0	\$0	\$0	\$0	\$114,400	\$0	\$0	\$0	\$572,000
CC1702	\$0	\$196,000	\$0	\$584,000	\$0	\$0	\$0	\$0	\$0	\$0	\$0	\$0	\$0	\$195,000	\$0	\$0	\$0	\$975,000
CC1703	\$0	\$0	\$0	\$4,000	\$0	\$0	\$0	\$0	\$0	\$0	\$0	\$0	\$0	\$1,000	\$0	\$0	\$0	\$5,000
CC1801	\$0	\$0	\$0	\$19,200	\$0	\$0	\$0	\$0	\$0	\$0	\$0	\$0	\$0	\$4,800	\$0	\$0	\$0	\$24,000
CC1802	\$0	\$0	\$0	\$0	\$0	\$0	\$0	\$0	\$0	\$80,000	\$0	\$0	\$0	\$20,000	\$0	\$0	\$0	\$100,000
CC1803-18	\$0	\$72,000	\$0	\$0	\$0	\$0	\$0	\$0	\$0	\$0	\$0	\$0	\$0	\$8,000	\$0	\$0	\$0	\$80,000
GR1403-18A1	\$0	\$0	\$0	\$0	\$0	\$0	\$0	\$0	\$0	\$68,000	\$0	\$0	\$0	\$17,000	\$0	\$0	\$0	\$85,000
GR1501	\$180,119	\$0	\$0	\$0	\$0	\$0	\$0	\$0	\$0	\$0	\$0	\$0	\$45,030	\$0	\$0	\$0	\$0	\$225,149
GR1701	\$0	\$0	\$0	\$688,000	\$0	\$0	\$0	\$0	\$0	\$0	\$0	\$0	\$0	\$167,000	\$0	\$0	\$0	\$855,000
GR1703	\$0	\$0	\$0	\$1,600	\$0	\$0	\$0	\$0	\$0	\$0	\$0	\$0	\$0	\$400	\$0	\$0	\$0	\$2,000
GR1704	\$0	\$0	\$0	\$1,600	\$0	\$0	\$0	\$0	\$0	\$0	\$0	\$0	\$0	\$400	\$0	\$0	\$0	\$2,000
GR1705	\$0	\$0	\$0	\$15,200	\$0	\$0	\$0	\$0	\$0	\$0	\$0	\$0	\$0	\$3,800	\$0	\$0	\$0	\$19,000
GR1706	\$0	\$0	\$0	\$415,200	\$0	\$0	\$0	\$0	\$0	\$0	\$0	\$0	\$0	\$103,800	\$0	\$0	\$0	\$519,000
GR1707-17A6	\$0	\$0	\$0	\$0	\$0	\$0	\$0	\$0	\$0	\$0	\$0	\$0	\$51,000	\$0	\$0	\$0	\$0	\$51,000
GR1801-18	\$0	\$22,500	\$0	\$0	\$0	\$0	\$0	\$0	\$0	\$0	\$0	\$0	\$0	\$2,500	\$0	\$0	\$0	\$25,000
GR1802-18	\$0	\$0	\$0	\$84,000	\$0	\$0	\$0	\$0	\$0	\$0	\$0	\$0	\$0	\$21,000	\$0	\$0	\$0	\$105,000
GR1803-18	\$0	\$0	\$0	\$0	\$0	\$0	\$0	\$0	\$0	\$988,800	\$0	\$0	\$0	\$247,200	\$0	\$0	\$0	\$1,236,000
GR1804-18	\$0	\$0	\$0	\$0	\$0	\$0	\$0	\$0	\$0	\$1,600	\$0	\$0	\$0	\$400	\$0	\$0	\$0	\$2,000
GR1805-18	\$0	\$0	\$0	\$800	\$0	\$0	\$0	\$0	\$0	\$0	\$0	\$0	\$0	\$200	\$0	\$0	\$0	\$1,000
MO1105	\$0	\$0	\$0	\$0	\$0	\$0	\$0	\$0	\$0	\$0	\$0	\$0	\$0	\$284,000	\$0	\$0	\$0	\$284,000
MO1616	\$0	\$0	\$0	\$0	\$0	\$0	\$0	\$0	\$0	\$3,036,800	\$0	\$0	\$0	\$759,200	\$0	\$0	\$0	\$3,796,000
MO1705	\$0	\$0	\$0	\$800	\$0	\$0	\$0	\$0	\$0	\$0	\$0	\$0	\$0	\$200	\$0	\$0	\$0	\$1,000
MO1708	\$0	\$162,000	\$0	\$0	\$0	\$0	\$0	\$0	\$0	\$0	\$0	\$0	\$0	\$18,000	\$0	\$0	\$0	\$180,000
MO1709	\$0	\$1,800	\$0	\$0	\$0	\$0	\$0	\$0	\$0	\$0	\$0	\$0	\$0	\$200	\$0	\$0	\$0	\$2,000
MO1710-17A2	\$0	\$0	\$0	\$105,600	\$0	\$0	\$0	\$0	\$0	\$0	\$0	\$0	\$0	\$26,400	\$0	\$0	\$0	\$132,000
MO1711	\$0	\$0	\$0	\$8,000	\$0	\$0	\$0	\$0	\$0	\$0	\$0	\$0	\$0	\$2,000	\$0	\$0	\$0	\$10,000
MO1712	\$0	\$0	\$0	\$0	\$0	\$0	\$0	\$0	\$0	\$1,600	\$0	\$0	\$0	\$400	\$0	\$0	\$0	\$2,000
MO1713	\$0	\$3,116,700	\$0	\$0	\$0	\$0	\$0	\$0	\$0	\$0	\$0	\$0	\$0	\$346,300	\$0	\$0	\$0	\$3,463,000
MO1714	\$0	\$0	\$0	\$0	\$0	\$0	\$0	\$0	\$0	\$1,600	\$0	\$0	\$0	\$400	\$0	\$0	\$0	\$2,000
MO1716	\$315,000	\$0	\$0	\$471,200	\$0	\$0	\$0	\$0	\$0	\$0	\$0	\$0	\$78,750	\$117,800	\$0	\$0	\$0	\$982,750
MO1717	\$0	\$0	\$0	\$800	\$0	\$0	\$0	\$0	\$0	\$0	\$0	\$0	\$0	\$200	\$0	\$0	\$0	\$1,000
MO1719	\$0	\$0	\$0	\$0	\$0	\$0	\$0	\$0	\$0	\$38,400	\$0	\$0	\$0	\$9,600	\$0	\$0	\$0	\$48,000
MO1720	\$0	\$0	\$0	\$0	\$0	\$0	\$0	\$0	\$0	\$4,000	\$0	\$0	\$0	\$1,000	\$0	\$0	\$0	\$5,000
MO1721	\$0	\$27,000	\$0	\$0	\$0	\$0	\$0	\$0	\$0	\$0	\$0	\$0	\$0	\$3,000	\$0	\$0	\$0	\$30,000
MO1722	\$0	\$0	\$0	\$0	\$0	\$0	\$0	\$0	\$0	\$16,800	\$0	\$0	\$0	\$4,200	\$0	\$0	\$0	\$21,000
MO1723	\$0	\$0	\$0	\$3,200	\$0	\$0	\$0	\$0	\$0	\$0	\$0	\$0	\$0	\$800	\$0	\$0	\$0	\$4,000
MO1803-18	\$0	\$900	\$0	\$0	\$0	\$0	\$0	\$0	\$0	\$0	\$0	\$0	\$0	\$100	\$0	\$0	\$0	\$1,000
MO1804-18	\$0	\$0	\$0	\$800	\$0	\$0	\$0	\$0	\$0	\$0	\$0	\$0	\$0	\$200	\$0	\$0	\$0	\$1,000
MO1805-18	\$0	\$0	\$0	\$112,000	\$0	\$0	\$0	\$0	\$0	\$0	\$0	\$0	\$0	\$28,000	\$0	\$0	\$0	\$140,000
MO1806-18	\$0	\$0	\$0	\$72,000	\$0	\$0	\$0	\$0	\$0	\$0	\$0	\$0	\$0	\$18,000	\$0	\$0	\$0	\$90,000
MO1807-18	\$0	\$0	\$0	\$0	\$0	\$0	\$0	\$0	\$0	\$0	\$0	\$0	\$0	\$11,500	\$103,500	\$0	\$0	\$115,000
MO1808-18	\$0	\$0	\$0	\$0	\$0	\$0	\$0	\$0	\$0	\$0	\$0	\$0	\$0	\$21,900	\$197,100	\$0	\$0	\$219,000
NX1701	\$0	\$0	\$0	\$0	\$0	\$0	\$0	\$0	\$0	\$964,000	\$0	\$0	\$0	\$580,000	\$0	\$0	\$0	\$1,544,000
NX1702	\$0	\$0	\$0	\$1,029,600	\$0	\$0	\$0	\$0	\$0	\$0	\$0	\$0	\$0	\$257,400	\$0	\$0	\$0	\$1,287,000
NX1703	\$0	\$0	\$0	\$188,000	\$0	\$0	\$0	\$0	\$0	\$0	\$0	\$0	\$0	\$47,000	\$0	\$0	\$0	\$235,000
NX1704	\$0	\$0	\$0	\$0	\$0	\$0	\$0	\$0	\$0	\$1,600	\$0	\$0	\$0	\$400	\$0	\$0	\$0	\$2,000
NX1705	\$0	\$0	\$0	\$0	\$0	\$0	\$0	\$0	\$0	\$68,800	\$0	\$0	\$0	\$17,200	\$0	\$0	\$0	\$86,000
NX1801-17A2	\$54,400	\$0	\$0	\$0	\$0	\$0	\$0	\$0	\$0	\$37,600	\$0	\$0	\$13,600	\$9,400	\$0	\$0	\$0	\$115,000
OK1401-17A2	\$0	\$0	\$0	\$110,400	\$0	\$0	\$0	\$0	\$0	\$0	\$0	\$0	\$0	\$27,600	\$0	\$0	\$0	\$138,000
OK1701	\$0	\$0	\$0	\$161,600	\$0	\$0	\$0	\$0	\$0	\$0	\$0	\$0	\$0	\$40,400	\$0	\$0	\$0	\$202,000
OK1702	\$0	\$0	\$0	\$3,068,800	\$0	\$0	\$0	\$0	\$0	\$0	\$0	\$0	\$204,924	\$562,276	\$0	\$0	\$0	\$3,836,000
OK1703	\$0	\$0	\$0	\$5,981,600	\$0	\$0	\$0	\$0	\$0	\$0	\$0	\$0	\$0	\$1,495,400	\$0	\$0	\$0	\$7,477,000
OK1801-17A2	\$1,716,720	\$0	\$0	\$1,456,080	\$0	\$0	\$0	\$0	\$0	\$0	\$0	\$0	\$429,180	\$364,020	\$0	\$0	\$0	\$3,966,000
OK1802-17A5	\$626,722	\$0	\$0	\$0	\$0	\$0	\$0	\$0	\$574,959	\$0	\$0	\$580,494	\$489,626	\$0	\$0	\$96,749	\$2,368,550	
OK1803	\$0	\$0	\$0	\$0	\$0	\$0	\$0	\$0	\$0	\$16,000	\$0	\$0	\$0	\$4,000	\$0	\$0	\$0	\$20,000
RG0901-18A1	\$0	\$0	\$0	\$0	\$0	\$0	\$0	\$0	\$0	\$68,000	\$0	\$0	\$0	\$17,000	\$0	\$0	\$0	\$85,000
RG1201	\$0	\$0	\$0	\$0	\$0	\$0	\$0	\$0	\$0	\$800	\$0	\$0	\$0	\$200	\$0	\$0	\$0	\$1,000
RP1502	\$1,702,503	\$0	\$0	\$0	\$0	\$0	\$0	\$0	\$0	\$0	\$0	\$0	\$496,128	\$0	\$0	\$0	\$0	\$2,198,631
RP1701	\$0	\$0	\$0	\$0	\$0	\$0	\$0	\$0	\$0	\$8,000	\$0	\$0	\$0	\$2,000	\$0	\$0	\$0	\$10,000
RP1702	\$0	\$7,000	\$0	\$184,200	\$0	\$0	\$0	\$0	\$0	\$0	\$0	\$0	\$0	\$47,800	\$0	\$0	\$0	\$239,000
RP1703-17A3	\$0	\$0	\$0	\$1,600	\$0	\$0	\$0	\$0	\$0	\$0	\$0	\$0	\$0	\$400	\$0	\$0	\$0	\$2,000
RP1704-17A3	\$0	\$0	\$0	\$1,600	\$0	\$0	\$0	\$0	\$0	\$0	\$0	\$0	\$0	\$400	\$0	\$0	\$0	\$2,000
RP1801-17A2	\$772,160	\$704,556	\$0	\$0	\$0	\$0	\$0	\$0	\$0	\$0	\$0	\$0	\$193,040	\$78,284	\$0	\$0	\$0	\$1,748,040

FY 2018 continued on next page

# FINANCIAL SUMMARY

## Roadways

### YEARLY SUMMARY

	Federal												Local	State				
PROJECT	FHWA (STBG-U)	FHWA (SAFETY)	FHWA (BRIDGE)	FHWA (STBG)	FHWA (VM)	FHWA (130)	FHWA (NHS)	FHWA (BRM)	FHWA (BRO)	FHWA (NHPP)	FHWA (HPP)	FEMA	LOCAL	MoDOT	MoDOT-GCSA	MoDOT-AC	SEMA	TOTAL
2018 Continued																		
RP1802-18	\$0	\$0	\$0	\$0	\$0	\$0	\$0	\$0	\$0	\$1,600	\$0	\$0	\$0	\$400	\$0	\$0	\$0	\$2,000
RP1803-18	\$0	\$0	\$0	\$0	\$0	\$0	\$0	\$0	\$0	\$0	\$0	\$0	\$0	\$400	\$0	\$1,600	\$0	\$2,000
SP1106	\$154,525	\$0	\$0	\$276,882	\$0	\$0	\$0	\$0	\$0	\$0	\$0	\$0	\$38,631	\$69,221	\$0	\$0	\$0	\$539,259
SP1112	\$1,110,295	\$0	\$0	\$0	\$0	\$0	\$0	\$0	\$0	\$1,883,198	\$166,134	\$0	\$0	\$748,373	\$0	\$0	\$0	\$3,908,000
SP1122	\$0	\$0	\$0	\$115,000	\$0	\$0	\$0	\$0	\$0	\$0	\$0	\$0	\$0	\$0	\$0	\$0	\$0	\$115,000
SP1204	\$0	\$0	\$0	\$0	\$0	\$0	\$0	\$0	\$0	\$1,012,000	\$0	\$0	\$0	\$253,000	\$0	\$0	\$0	\$1,265,000
SP1209	\$0	\$0	\$0	\$3,840	\$0	\$0	\$0	\$0	\$0	\$0	\$0	\$0	\$960	\$0	\$0	\$0	\$0	\$4,800
SP1401	\$0	\$0	\$0	\$0	\$0	\$0	\$0	\$0	\$0	\$1,600	\$0	\$0	\$0	\$400	\$0	\$0	\$0	\$2,000
SP1405-18A1	\$0	\$0	\$0	\$0	\$0	\$0	\$0	\$0	\$0	\$121,600	\$0	\$0	\$0	\$30,400	\$0	\$0	\$0	\$152,000
SP1419-18A1	\$0	\$0	\$0	\$0	\$128,000	\$0	\$0	\$0	\$0	\$0	\$0	\$0	\$0	\$32,000	\$0	\$0	\$0	\$160,000
SP1701	\$0	\$0	\$0	\$0	\$0	\$0	\$0	\$0	\$0	\$315,200	\$0	\$0	\$0	\$78,800	\$0	\$0	\$0	\$394,000
SP1704	\$0	\$0	\$0	\$0	\$0	\$0	\$0	\$0	\$0	\$8,000	\$0	\$0	\$0	\$2,000	\$0	\$0	\$0	\$10,000
SP1705	\$0	\$0	\$0	\$0	\$0	\$0	\$0	\$0	\$0	\$108,000	\$0	\$0	\$0	\$27,000	\$0	\$0	\$0	\$135,000
SP1707	\$0	\$0	\$0	\$4,000	\$0	\$0	\$0	\$0	\$0	\$0	\$0	\$0	\$0	\$1,000	\$0	\$0	\$0	\$5,000
SP1708	\$0	\$0	\$0	\$0	\$0	\$0	\$0	\$0	\$0	\$1,600	\$0	\$0	\$0	\$400	\$0	\$0	\$0	\$2,000
SP1709	\$0	\$0	\$0	\$0	\$0	\$0	\$0	\$0	\$0	\$16,000	\$0	\$0	\$0	\$4,000	\$0	\$0	\$0	\$20,000
SP1710	\$0	\$0	\$0	\$0	\$0	\$0	\$0	\$0	\$0	\$1,600	\$0	\$0	\$0	\$400	\$0	\$0	\$0	\$2,000
SP1714-17A2	\$1,600,000	\$0	\$0	\$0	\$0	\$0	\$0	\$0	\$0	\$0	\$0	\$0	\$400,000	\$0	\$0	\$0	\$0	\$2,000,000
SP1801-18	\$0	\$0	\$0	\$0	\$0	\$0	\$0	\$0	\$0	\$40,000	\$0	\$0	\$0	\$10,000	\$0	\$0	\$0	\$50,000
SP1802-18	\$0	\$0	\$0	\$0	\$0	\$0	\$0	\$0	\$0	\$40,000	\$0	\$0	\$0	\$10,000	\$0	\$0	\$0	\$50,000
SP1803-18	\$0	\$0	\$1,600	\$0	\$0	\$0	\$0	\$0	\$0	\$0	\$0	\$0	\$0	\$400	\$0	\$0	\$0	\$2,000
SP1804-18	\$0	\$0	\$0	\$620,000	\$0	\$0	\$0	\$0	\$0	\$0	\$0	\$0	\$0	\$155,000	\$0	\$0	\$0	\$775,000
SP1805-18	\$0	\$0	\$0	\$0	\$1,800	\$0	\$0	\$0	\$0	\$0	\$0	\$0	\$0	\$200	\$0	\$0	\$0	\$2,000
SP1806-18	\$0	\$0	\$0	\$0	\$851,400	\$0	\$0	\$0	\$0	\$0	\$0	\$0	\$0	\$94,600	\$0	\$0	\$0	\$946,000
SP1807-18	\$0	\$184,500	\$0	\$0	\$0	\$0	\$0	\$0	\$0	\$0	\$0	\$0	\$0	\$20,500	\$0	\$0	\$0	\$205,000
SP1808-18	\$0	\$0	\$0	\$0	\$0	\$0	\$0	\$0	\$0	\$52,800	\$0	\$0	\$0	\$13,200	\$0	\$0	\$0	\$66,000
SP1809-18	\$0	\$0	\$0	\$0	\$0	\$0	\$0	\$0	\$0	\$1,600	\$0	\$0	\$0	\$400	\$0	\$0	\$0	\$2,000
SP1810-18	\$0	\$0	\$0	\$0	\$0	\$0	\$0	\$0	\$0	\$1,742,400	\$0	\$0	\$0	\$435,600	\$0	\$0	\$0	\$2,178,000
SP1811-18	\$0	\$72,000	\$0	\$0	\$0	\$0	\$0	\$0	\$0	\$0	\$0	\$0	\$0	\$8,000	\$0	\$0	\$0	\$80,000
SP1812-18	\$0	\$72,000	\$0	\$0	\$0	\$0	\$0	\$0	\$0	\$0	\$0	\$0	\$0	\$8,000	\$0	\$0	\$0	\$80,000
WI1001-17A2	\$0	\$0	\$0	\$4,000	\$0	\$0	\$0	\$0	\$0	\$0	\$0	\$0	\$0	\$1,000	\$0	\$0	\$0	\$5,000
WI1701-17AM1	\$873,896	\$0	\$0	\$0	\$0	\$0	\$0	\$0	\$0	\$0	\$0	\$0	\$327,354	\$0	\$0	\$0	\$0	\$1,201,250
WI1801-18	\$0	\$0	\$0	\$532,000	\$0	\$0	\$0	\$0	\$0	\$0	\$0	\$0	\$0	\$133,000	\$0	\$0	\$0	\$665,000
SUBTOTAL	\$9,106,340	\$4,639,856	\$1,600	\$16,786,402	\$981,200	\$0	\$0	\$0	\$574,959	\$12,431,198	\$166,134	\$580,494	\$2,768,223	\$8,670,074	\$0	\$302,200	\$96,749	\$57,105,429
	\$0																	
2019																		
BA1801-18	\$0	\$0	\$0	\$0	\$0	\$0	\$0	\$0	\$0	\$8,000	\$0	\$0	\$0	\$2,000	\$0	\$0	\$0	\$10,000
CC0901	\$0	\$0	\$0	\$1,600	\$0	\$0	\$0	\$0	\$0	\$0	\$0	\$0	\$0	\$400	\$0	\$0	\$0	\$2,000
CC1102	\$0	\$0	\$0	\$0	\$0	\$0	\$0	\$0	\$0	\$400,000	\$0	\$0	\$0	\$100,000	\$0	\$0	\$0	\$500,000
CC1601	\$0	\$900	\$0	\$0	\$0	\$0	\$0	\$0	\$0	\$0	\$0	\$0	\$0	\$100	\$0	\$0	\$0	\$1,000
CC1703	\$0	\$0	\$0	\$4,000	\$0	\$0	\$0	\$0	\$0	\$0	\$0	\$0	\$0	\$1,000	\$0	\$0	\$0	\$5,000
CC1801	\$0	\$0	\$0	\$1,240,800	\$0	\$0	\$0	\$0	\$0	\$0	\$0	\$0	\$0	\$310,200	\$0	\$0	\$0	\$1,551,000
CC1802	\$0	\$0	\$0	\$0	\$0	\$0	\$0	\$0	\$0	\$80,000	\$0	\$0	\$0	\$20,000	\$0	\$0	\$0	\$100,000
GR1403-18A1	\$0	\$0	\$0	\$0	\$0	\$0	\$0	\$0	\$0	\$8,000	\$0	\$0	\$0	\$2,000	\$0	\$0	\$0	\$10,000
GR1701	\$0	\$0	\$0	\$7,634,400	\$0	\$0	\$0	\$0	\$0	\$0	\$0	\$0	\$0	\$1,908,600	\$0	\$0	\$0	\$9,543,000
GR1703	\$0	\$0	\$0	\$3,200	\$0	\$0	\$0	\$0	\$0	\$0	\$0	\$0	\$0	\$800	\$0	\$0	\$0	\$4,000
GR1704	\$0	\$0	\$0	\$38,400	\$0	\$0	\$0	\$0	\$0	\$0	\$0	\$0	\$0	\$9,600	\$0	\$0	\$0	\$48,000
GR1705	\$0	\$76,000	\$0	\$225,600	\$0	\$0	\$0	\$0	\$0	\$0	\$0	\$0	\$0	\$75,400	\$0	\$0	\$0	\$377,000
GR1707-17A6	\$0	\$0	\$0	\$0	\$0	\$0	\$0	\$0	\$0	\$0	\$0	\$0	\$1,000	\$0	\$0	\$0	\$0	\$1,000
GR1801-18	\$0	\$22,500	\$0	\$0	\$0	\$0	\$0	\$0	\$0	\$0	\$0	\$0	\$0	\$2,500	\$0	\$0	\$0	\$25,000
GR1804-18	\$0	\$0	\$0	\$0	\$0	\$0	\$0	\$0	\$0	\$43,200	\$0	\$0	\$0	\$10,800	\$0	\$0	\$0	\$54,000
GR1805-18	\$0	\$0	\$0	\$800	\$0	\$0	\$0	\$0	\$0	\$0	\$0	\$0	\$0	\$200	\$0	\$0	\$0	\$1,000
MO1105	\$0	\$0	\$0	\$0	\$0	\$0	\$0	\$0	\$0	\$0	\$0	\$0	\$0	\$284,000	\$0	\$0	\$0	\$284,000
MO1705	\$0	\$0	\$0	\$1,600	\$0	\$0	\$0	\$0	\$0	\$0	\$0	\$0	\$0	\$400	\$0	\$0	\$0	\$2,000
MO1709	\$0	\$162,900	\$0	\$0	\$0	\$0	\$0	\$0	\$0	\$0	\$0	\$0	\$0	\$18,100	\$0	\$0	\$0	\$181,000
MO1711	\$0	\$0	\$0	\$511,200	\$0	\$0	\$0	\$0	\$0	\$0	\$0	\$0	\$0	\$127,800	\$0	\$0	\$0	\$639,000
MO1712	\$0	\$0	\$0	\$0	\$0	\$0	\$0	\$0	\$0	\$1,600	\$0	\$0	\$0	\$400	\$0	\$0	\$0	\$2,000
MO1714	\$0	\$0	\$0	\$0	\$0	\$0	\$0	\$0	\$0	\$1,600	\$0	\$0	\$0	\$400	\$0	\$0	\$0	\$2,000
MO1717	\$324,000	\$0	\$0	\$471,200	\$0	\$0	\$0	\$0	\$0	\$0	\$0	\$0	\$81,000	\$117,800	\$0	\$0	\$0	\$994,000
MO1719	\$0	\$0	\$0	\$0	\$0	\$0	\$0	\$0	\$0	\$38,400	\$0	\$0	\$0	\$9,600	\$0	\$0	\$0	\$48,000
MO1720	\$0	\$0	\$0	\$0	\$0	\$0	\$0	\$0	\$0	\$4,000	\$0	\$0	\$0	\$1,000	\$0	\$0	\$0	\$5,000
MO1721	\$0	\$27,000	\$0	\$0	\$0	\$0	\$0	\$0	\$0	\$0	\$0	\$0	\$0	\$3,000	\$0	\$0	\$0	\$30,000
MO1722	\$0	\$0	\$0	\$0	\$0	\$0	\$0	\$0	\$0	\$16,800	\$0	\$0	\$0	\$4,200	\$0	\$0	\$0	\$21,000
MO1723	\$0	\$0	\$0	\$4,000	\$0	\$0	\$0	\$0	\$0	\$0	\$0	\$0	\$0	\$1,000	\$0	\$0	\$0	\$5,000
MO1803-18	\$0	\$900	\$0	\$0	\$0	\$0	\$0	\$0	\$0	\$0	\$0	\$0	\$0	\$100	\$0	\$0	\$0	\$1,000
MO1804-18	\$0	\$0	\$0	\$800	\$0	\$0	\$0	\$0	\$0	\$0	\$0	\$0	\$0	\$200	\$0	\$0	\$0	\$1,000
MO1805-18	\$0	\$0	\$0	\$1,364,000	\$0	\$0	\$0	\$0	\$0	\$0	\$0	\$0	\$0	\$341,000	\$0	\$0	\$0	\$1,705,000

FY 2019 continued on next page

# FINANCIAL SUMMARY

## Roadways

### YEARLY SUMMARY

	Federal												Local	State				
PROJECT	FHWA (STBG-U)	FHWA (SAFETY)	FHWA (BRIDGE)	FHWA (STBG)	FHWA (VM)	FHWA (130)	FHWA (NHS)	FHWA (BRM)	FHWA (BRO)	FHWA (NHPP)	FHWA (HPP)	FEMA	LOCAL	MoDOT	MoDOT-GCSA	MoDOT-AC	SEMA	TOTAL
2019 Continued																		
MO1806-18	\$0	\$0	\$0	\$80,000	\$0	\$0	\$0	\$0	\$0	\$0	\$0	\$0	\$0	\$20,000	\$0	\$0	\$0	\$100,000
NX1701	\$0	\$0	\$0	\$0	\$0	\$0	\$0	\$0	\$0	\$221,600	\$0	\$0	\$0	\$55,400	\$0	\$0	\$0	\$277,000
NX1702	\$0	\$0	\$0	\$5,335,200	\$0	\$0	\$0	\$0	\$0	\$256,800	\$0	\$0	\$0	\$1,398,000	\$0	\$0	\$0	\$6,990,000
NX1704	\$0	\$0	\$0	\$0	\$0	\$0	\$0	\$0	\$0	\$1,600	\$0	\$0	\$0	\$400	\$0	\$0	\$0	\$2,000
NX1705	\$0	\$0	\$0	\$0	\$0	\$0	\$0	\$0	\$0	\$4,148,800	\$0	\$0	\$0	\$1,037,200	\$0	\$0	\$0	\$5,186,000
NX1801-17A2	\$848,486	\$0	\$0	\$0	\$0	\$0	\$0	\$0	\$0	\$745,114	\$0	\$0	\$212,121	\$186,279	\$0	\$0	\$0	\$1,992,000
NX1802-18	\$290,928	\$0	\$0	\$0	\$0	\$0	\$0	\$0	\$0	\$0	\$0	\$0	\$72,732	\$0	\$0	\$0	\$0	\$363,660
OK1401-17A2	\$1,101,726	\$0	\$0	\$1,110,998	\$0	\$0	\$0	\$0	\$0	\$0	\$0	\$0	\$275,431	\$277,749	\$0	\$0	\$0	\$2,765,904
OK1701	\$0	\$835,000	\$0	\$3,897,800	\$0	\$0	\$0	\$0	\$0	\$0	\$0	\$0	\$0	\$1,183,200	\$0	\$0	\$0	\$5,916,000
OK1802-17A5	\$173,278	\$0	\$0	\$0	\$0	\$0	\$0	\$0	\$158,967	\$0	\$0	\$160,498	\$135,375	\$0	\$0	\$0	\$26,750	\$654,868
OK1803	\$0	\$0	\$0	\$0	\$0	\$0	\$0	\$0	\$0	\$114,400	\$0	\$0	\$0	\$28,600	\$0	\$0	\$0	\$143,000
RG0901-18A1	\$0	\$0	\$0	\$0	\$0	\$0	\$0	\$0	\$0	\$8,000	\$0	\$0	\$0	\$2,000	\$0	\$0	\$0	\$10,000
RG1201	\$0	\$0	\$0	\$0	\$0	\$0	\$0	\$0	\$0	\$800	\$0	\$0	\$0	\$200	\$0	\$0	\$0	\$1,000
RP1701	\$0	\$0	\$0	\$0	\$0	\$0	\$0	\$0	\$0	\$8,000	\$0	\$0	\$0	\$2,000	\$0	\$0	\$0	\$10,000
RP1703-17A3	\$0	\$0	\$0	\$1,600	\$0	\$0	\$0	\$0	\$0	\$0	\$0	\$0	\$0	\$400	\$0	\$0	\$0	\$2,000
RP1704-17A3	\$0	\$0	\$0	\$1,600	\$0	\$0	\$0	\$0	\$0	\$0	\$0	\$0	\$0	\$400	\$0	\$0	\$0	\$2,000
RP1802-18	\$0	\$0	\$0	\$0	\$0	\$0	\$0	\$0	\$0	\$28,000	\$0	\$0	\$0	\$7,000	\$0	\$0	\$0	\$35,000
RP1803-18	\$0	\$0	\$0	\$0	\$0	\$0	\$0	\$0	\$0	\$0	\$0	\$0	\$0	\$2,800	\$0	\$11,200	\$0	\$14,000
SP1401	\$0	\$0	\$0	\$0	\$0	\$0	\$0	\$0	\$0	\$1,600	\$0	\$0	\$0	\$400	\$0	\$0	\$0	\$2,000
SP1405-18A1	\$0	\$0	\$0	\$0	\$0	\$0	\$0	\$0	\$0	\$40,000	\$0	\$0	\$0	\$10,000	\$0	\$0	\$0	\$50,000
SP1419-18A1	\$0	\$0	\$0	\$0	\$40,000	\$0	\$0	\$0	\$0	\$0	\$0	\$0	\$0	\$10,000	\$0	\$0	\$0	\$50,000
SP1605-17AM1	\$0	\$0	\$0	\$0	\$0	\$0	\$0	\$963,132	\$0	\$0	\$0	\$0	\$240,783	\$0	\$0	\$0	\$0	\$1,203,915
SP1704	\$0	\$0	\$0	\$0	\$0	\$0	\$0	\$0	\$0	\$664,800	\$0	\$0	\$0	\$166,200	\$0	\$0	\$0	\$831,000
SP1705	\$0	\$0	\$0	\$0	\$0	\$0	\$0	\$0	\$0	\$7,771,200	\$0	\$0	\$0	\$1,942,800	\$0	\$0	\$0	\$9,714,000
SP1707	\$0	\$0	\$0	\$32,000	\$0	\$0	\$0	\$0	\$0	\$0	\$0	\$0	\$0	\$8,000	\$0	\$0	\$0	\$40,000
SP1708	\$0	\$0	\$0	\$0	\$0	\$0	\$0	\$0	\$0	\$8,000	\$0	\$0	\$0	\$2,000	\$0	\$0	\$0	\$10,000
SP1709	\$0	\$0	\$0	\$0	\$0	\$0	\$0	\$0	\$0	\$16,000	\$0	\$0	\$0	\$4,000	\$0	\$0	\$0	\$20,000
SP1710	\$0	\$0	\$0	\$0	\$0	\$0	\$0	\$0	\$0	\$14,400	\$0	\$0	\$0	\$3,600	\$0	\$0	\$0	\$18,000
SP1801-18	\$0	\$0	\$0	\$0	\$0	\$0	\$0	\$0	\$0	\$1,600	\$0	\$0	\$0	\$400	\$0	\$0	\$0	\$2,000
SP1802-18	\$0	\$0	\$0	\$0	\$0	\$0	\$0	\$0	\$0	\$1,600	\$0	\$0	\$0	\$400	\$0	\$0	\$0	\$2,000
SP1803-18	\$0	\$0	\$73,600	\$0	\$0	\$0	\$0	\$0	\$0	\$0	\$0	\$0	\$0	\$18,400	\$0	\$0	\$0	\$92,000
SP1805-18	\$0	\$0	\$0	\$0	\$14,400	\$0	\$0	\$0	\$0	\$0	\$0	\$0	\$0	\$1,600	\$0	\$0	\$0	\$16,000
SP1807-18	\$0	\$1,774,800	\$0	\$0	\$0	\$0	\$0	\$0	\$0	\$0	\$0	\$0	\$0	\$197,200	\$0	\$0	\$0	\$1,972,000
SP1809-18	\$0	\$0	\$0	\$0	\$0	\$0	\$0	\$0	\$0	\$29,600	\$0	\$0	\$0	\$7,400	\$0	\$0	\$0	\$37,000
SP1901-18	\$0	\$0	\$0	\$0	\$0	\$180,000	\$0	\$0	\$0	\$0	\$0	\$0	\$0	\$0	\$20,000	\$0	\$0	\$200,000
WI1001-17A2	\$0	\$0	\$0	\$4,000	\$0	\$0	\$0	\$0	\$0	\$0	\$0	\$0	\$0	\$1,000	\$0	\$0	\$0	\$5,000
WI1801-18	\$0	\$0	\$0	\$5,700,000	\$0	\$0	\$0	\$0	\$0	\$0	\$0	\$0	\$0	\$1,425,000	\$0	\$0	\$0	\$7,125,000
SUBTOTAL	\$2,738,418	\$2,900,000	\$73,600	\$27,664,798	\$54,400	\$180,000	\$0	\$963,132	\$158,967	\$14,683,514	\$0	\$160,498	\$1,018,442	\$11,352,628	\$20,000	\$11,200	\$26,750	\$62,006,347
2020																		
BA1801-18	\$0	\$0	\$0	\$0	\$0	\$0	\$0	\$0	\$0	\$660,800	\$0	\$0	\$0	\$165,200	\$0	\$0	\$0	\$826,000
CC1102	\$0	\$0	\$0	\$0	\$0	\$0	\$1,600	\$0	\$0	\$0	\$0	\$0	\$0	\$400	\$0	\$0	\$0	\$2,000
CC1601	\$0	\$55,800	\$0	\$0	\$0	\$0	\$0	\$0	\$0	\$0	\$0	\$0	\$0	\$6,200	\$0	\$0	\$0	\$62,000
CC1703	\$0	\$0	\$0	\$4,000	\$0	\$0	\$0	\$0	\$0	\$0	\$0	\$0	\$0	\$1,000	\$0	\$0	\$0	\$5,000
CC1802	\$0	\$0	\$0	\$0	\$0	\$0	\$0	\$0	\$0	\$313,600	\$0	\$0	\$0	\$78,400	\$0	\$0	\$0	\$392,000
GR1403-18A1	\$0	\$0	\$0	\$0	\$0	\$0	\$0	\$0	\$0	\$8,000	\$0	\$0	\$0	\$2,000	\$0	\$0	\$0	\$10,000
GR1502	\$1,120,000	\$0	\$0	\$0	\$0	\$0	\$0	\$0	\$0	\$0	\$0	\$0	\$280,000	\$0	\$0	\$0	\$0	\$1,400,000
GR1703	\$0	\$0	\$0	\$113,600	\$0	\$0	\$0	\$0	\$0	\$0	\$0	\$0	\$0	\$28,400	\$0	\$0	\$0	\$142,000
GR1704	\$0	\$242,000	\$0	\$417,200	\$0	\$0	\$0	\$0	\$0	\$0	\$0	\$0	\$0	\$164,800	\$0	\$0	\$0	\$824,000
GR1707-17A6	\$0	\$0	\$0	\$0	\$0	\$0	\$0	\$0	\$0	\$0	\$0	\$0	\$1,000	\$0	\$0	\$0	\$0	\$1,000
GR1801-18	\$0	\$22,500	\$0	\$0	\$0	\$0	\$0	\$0	\$0	\$0	\$0	\$0	\$0	\$2,500	\$0	\$0	\$0	\$25,000
GR1804-18	\$0	\$0	\$0	\$0	\$0	\$0	\$0	\$0	\$0	\$2,745,600	\$0	\$0	\$0	\$686,400	\$0	\$0	\$0	\$3,432,000
GR1805-18	\$0	\$0	\$0	\$43,200	\$0	\$0	\$0	\$0	\$0	\$0	\$0	\$0	\$0	\$10,800	\$0	\$0	\$0	\$54,000
MO1105	\$0	\$0	\$0	\$0	\$0	\$0	\$0	\$0	\$0	\$0	\$0	\$0	\$0	\$284,000	\$0	\$0	\$0	\$284,000
MO1705	\$0	\$0	\$0	\$788,000	\$0	\$0	\$0	\$0	\$0	\$0	\$0	\$0	\$0	\$197,000	\$0	\$0	\$0	\$985,000
MO1710-17A2	\$0	\$0	\$0	\$1,664,000	\$0	\$0	\$0	\$0	\$0	\$0	\$0	\$0	\$0	\$416,000	\$0	\$0	\$0	\$2,080,000
MO1711	\$0	\$0	\$0	\$4,349,600	\$0	\$0	\$0	\$0	\$0	\$0	\$0	\$0	\$0	\$1,087,400	\$0	\$0	\$0	\$5,437,000
MO1712	\$0	\$0	\$0	\$0	\$0	\$0	\$0	\$0	\$0	\$1,600	\$0	\$0	\$0	\$400	\$0	\$0	\$0	\$2,000
MO1714	\$0	\$0	\$0	\$0	\$0	\$0	\$0	\$0	\$0	\$33,600	\$0	\$0	\$0	\$8,400	\$0	\$0	\$0	\$42,000
MO1719	\$0	\$0	\$0	\$0	\$0	\$0	\$0	\$0	\$0	\$38,400	\$0	\$0	\$0	\$9,600	\$0	\$0	\$0	\$48,000
MO1720	\$0	\$0	\$0	\$0	\$0	\$0	\$0	\$0	\$0	\$4,000	\$0	\$0	\$0	\$1,000	\$0	\$0	\$0	\$5,000
MO1721	\$0	\$27,000	\$0	\$0	\$0	\$0	\$0	\$0	\$0	\$0	\$0	\$0	\$0	\$3,000	\$0	\$0	\$0	\$30,000
MO1722	\$0	\$0	\$0	\$0	\$0	\$0	\$0	\$0	\$0	\$18,400	\$0	\$0	\$0	\$4,600	\$0	\$0	\$0	\$23,000
MO1723	\$0	\$0	\$0	\$3,200	\$0	\$0	\$0	\$0	\$0	\$0	\$0	\$0	\$0	\$800	\$0	\$0	\$0	\$4,000
MO1803-18	\$0	\$161,100	\$0	\$0	\$0	\$0	\$0	\$0	\$0	\$0	\$0	\$0	\$0	\$17,900	\$0	\$0	\$0	\$179,000
MO1804-18	\$332,000	\$0	\$0	\$471,200	\$0	\$0	\$0	\$0	\$0	\$0	\$0	\$0	\$83,000	\$117,800	\$0	\$0	\$0	\$1,004,000
MO1806-18	\$0	\$0	\$0	\$1,440,800	\$0	\$0	\$0	\$0	\$0	\$0	\$0	\$0	\$0	\$360,200	\$0	\$0	\$0	\$1,801,000

FY 2020 continued on next page

# FINANCIAL SUMMARY

## Roadways

### YEARLY SUMMARY

	Federal												Local	State				
PROJECT	FHWA (STBG-U)	FHWA (SAFETY)	FHWA (BRIDGE)	FHWA (STBG)	FHWA (VM)	FHWA (130)	FHWA (NHS)	FHWA (BRM)	FHWA (BRO)	FHWA (NHPP)	FHWA (HPP)	FEMA	LOCAL	MoDOT	MoDOT-GCSA	MoDOT-AC	SEMA	TOTAL
2020 Continued																		
MO2001-18	\$0	\$855,900	\$0	\$0	\$0	\$0	\$0	\$0	\$0	\$0	\$0	\$0	\$0	\$0	\$0	\$0	\$0	\$855,900
MO2002-18		\$1,013,400	\$0	\$0	\$0	\$0	\$0	\$0	\$0	\$0	\$0	\$0	\$0	\$112,600	\$0	\$0	\$0	\$1,126,000
NX1701	\$0	\$0	\$0	\$0	\$0	\$0	\$0	\$0	\$0	\$6,378,400	\$0	\$0	\$0	\$1,594,600	\$0	\$0	\$0	\$7,973,000
NX1704	\$0	\$0	\$0	\$0	\$0	\$0	\$0	\$0	\$0	\$1,600	\$0	\$0	\$0	\$400	\$0	\$0	\$0	\$2,000
OK1803	\$0	\$0	\$0	\$0	\$0	\$0	\$0	\$0	\$0	\$164,000	\$0	\$0	\$0	\$41,000	\$0	\$0	\$0	\$205,000
RG0901-18A1	\$0	\$0	\$0	\$0	\$0	\$0	\$0	\$0	\$0	\$8,000	\$0	\$0	\$0	\$2,000	\$0	\$0	\$0	\$10,000
RG1201	\$0	\$0	\$0	\$0	\$0	\$0	\$0	\$0	\$0	\$800	\$0	\$0	\$0	\$200	\$0	\$0	\$0	\$1,000
RP1701	\$0	\$0	\$0	\$0	\$0	\$0	\$0	\$0	\$0	\$8,000	\$0	\$0	\$0	\$2,000	\$0	\$0	\$0	\$10,000
RP1703-17A3	\$0	\$0	\$0	\$1,600	\$0	\$0	\$0	\$0	\$0	\$0	\$0	\$0	\$0	\$400	\$0	\$0	\$0	\$2,000
RP1704-17A3	\$0	\$0	\$0	\$1,600	\$0	\$0	\$0	\$0	\$0	\$0	\$0	\$0	\$0	\$400	\$0	\$0	\$0	\$2,000
RP1802-18	\$0	\$0	\$0	\$0	\$0	\$0	\$0	\$0	\$0	\$1,852,800	\$0	\$0	\$0	\$463,200	\$0	\$0	\$0	\$2,316,000
RP1803-18	\$0	\$0	\$0	\$0	\$0	\$0	\$0	\$0	\$0	\$0	\$0	\$0	\$0	\$210,400	\$841,600	\$0	\$0	\$1,052,000
SP1401	\$0	\$0	\$0	\$0	\$0	\$0	\$0	\$0	\$0	\$5,600	\$0	\$0	\$0	\$1,400	\$0	\$0	\$0	\$7,000
SP1405-18A1	\$0	\$0	\$0	\$0	\$0	\$0	\$0	\$0	\$0	\$40,000	\$0	\$0	\$0	\$10,000	\$0	\$0	\$0	\$50,000
SP1419-18A1	\$0	\$0	\$0	\$0	\$9,000	\$0	\$0	\$0	\$0	\$0	\$0	\$0	\$0	\$1,000	\$0	\$0	\$0	\$10,000
SP1707	\$0	\$300,000	\$0	\$292,000	\$0	\$0	\$0	\$0	\$0	\$0	\$0	\$0	\$0	\$148,000	\$0	\$0	\$0	\$740,000
SP1708	\$0	\$0	\$0	\$0	\$0	\$0	\$0	\$0	\$0	\$896,800	\$0	\$0	\$0	\$224,200	\$0	\$0	\$0	\$1,121,000
SP1709	\$0	\$0	\$0	\$0	\$0	\$0	\$0	\$0	\$0	\$16,000	\$0	\$0	\$0	\$4,000	\$0	\$0	\$0	\$20,000
SP1710	\$0	\$0	\$0	\$0	\$0	\$0	\$0	\$0	\$0	\$664,000	\$0	\$0	\$0	\$166,000	\$0	\$0	\$0	\$830,000
SP1801-18	\$0	\$0	\$0	\$0	\$0	\$0	\$0	\$0	\$0	\$1,600	\$0	\$0	\$0	\$400	\$0	\$0	\$0	\$2,000
SP1802-18	\$0	\$0	\$0	\$0	\$0	\$0	\$0	\$0	\$0	\$1,600	\$0	\$0	\$0	\$400	\$0	\$0	\$0	\$2,000
SP1803-18	\$0	\$0	\$785,600	\$0	\$0	\$0	\$0	\$0	\$0	\$0	\$0	\$0	\$0	\$196,400	\$0	\$0	\$0	\$982,000
SP1805-18	\$0	\$0	\$0	\$0	\$1,511,100	\$0	\$0	\$0	\$0	\$0	\$0	\$0	\$0	\$167,900	\$0	\$0	\$0	\$1,679,000
SP1809-18	\$0	\$0	\$0	\$0	\$0	\$0	\$0	\$0	\$0	\$1,960,000	\$0	\$0	\$0	\$490,000	\$0	\$0	\$0	\$2,450,000
WI1001-17A2	\$0	\$0	\$0	\$4,000	\$0	\$0	\$0	\$0	\$0	\$0	\$0	\$0	\$0	\$1,000	\$0	\$0	\$0	\$5,000
SUBTOTAL	\$1,452,000	\$2,677,700	\$785,600	\$9,594,000	\$1,520,100	\$0	\$1,600	\$0	\$0	\$15,823,200	\$0	\$0	\$364,000	\$7,492,100	\$0	\$841,600	\$0	\$40,551,900
2021																		
CC1703	\$0	\$0	\$0	\$4,000	\$0	\$0	\$0	\$0	\$0	\$0	\$0	\$0	\$0	\$1,000	\$0	\$0	\$0	\$5,000
CC1802	\$0	\$0	\$0	\$0	\$0	\$0	\$0	\$0	\$0	\$3,593,600	\$0	\$0	\$0	\$898,400	\$0	\$0	\$0	\$4,492,000
GR1403-18A1	\$0	\$0	\$0	\$0	\$0	\$0	\$0	\$0	\$0	\$8,000	\$0	\$0	\$0	\$2,000	\$0	\$0	\$0	\$10,000
MO1105	\$0	\$0	\$0	\$0	\$0	\$0	\$0	\$0	\$0	\$0	\$0	\$0	\$0	\$284,000	\$0	\$0	\$0	\$284,000
MO1712	\$0	\$0	\$0	\$56,000	\$0	\$0	\$0	\$0	\$0	\$0	\$0	\$0	\$0	\$14,000	\$0	\$0	\$0	\$70,000
MO1714	\$0	\$0	\$0	\$216,800	\$0	\$0	\$0	\$0	\$0	\$4,458,400	\$0	\$0	\$0	\$1,168,800	\$0	\$0	\$0	\$5,844,000
MO1719	\$0	\$0	\$0	\$0	\$0	\$0	\$0	\$0	\$0	\$38,400	\$0	\$0	\$0	\$9,600	\$0	\$0	\$0	\$48,000
MO1720	\$0	\$0	\$0	\$0	\$0	\$0	\$0	\$0	\$0	\$3,200	\$0	\$0	\$0	\$800	\$0	\$0	\$0	\$4,000
MO1721	\$0	\$26,100	\$0	\$0	\$0	\$0	\$0	\$0	\$0	\$0	\$0	\$0	\$0	\$2,900	\$0	\$0	\$0	\$29,000
MO1722	\$0	\$0	\$0	\$0	\$0	\$0	\$0	\$0	\$0	\$16,800	\$0	\$0	\$0	\$4,200	\$0	\$0	\$0	\$21,000
MO1723	\$0	\$0	\$0	\$3,200	\$0	\$0	\$0	\$0	\$0	\$0	\$0	\$0	\$0	\$800	\$0	\$0	\$0	\$4,000
MO2001-18	\$0	\$54,900	\$0	\$0	\$0	\$0	\$0	\$0	\$0	\$0	\$0	\$0	\$95,100	\$6,100	\$0	\$0	\$0	\$156,100
MO2101-18	\$340,000	\$0	\$0	\$0	\$0	\$0	\$0	\$0	\$0	\$0	\$0	\$0	\$85,000	\$0	\$0	\$0	\$0	\$425,000
OK1803	\$0	\$0	\$0	\$0	\$0	\$0	\$0	\$0	\$0	\$2,492,000	\$0	\$0	\$0	\$623,000	\$0	\$0	\$0	\$3,115,000
RG0901-18A1	\$0	\$0	\$0	\$0	\$0	\$0	\$0	\$0	\$0	\$8,000	\$0	\$0	\$0	\$2,000	\$0	\$0	\$0	\$10,000
RG1201	\$0	\$0	\$0	\$0	\$0	\$0	\$4,800	\$0	\$0	\$0	\$0	\$0	\$0	\$1,200	\$0	\$0	\$0	\$6,000
RP1701	\$0	\$0	\$0	\$0	\$0	\$0	\$0	\$0	\$0	\$8,000	\$0	\$0	\$0	\$2,000	\$0	\$0	\$0	\$10,000
RP1703-17A3	\$0	\$0	\$0	\$1,600	\$0	\$0	\$0	\$0	\$0	\$0	\$0	\$0	\$0	\$400	\$0	\$0	\$0	\$2,000
RP1704-17A3	\$0	\$0	\$0	\$1,600	\$0	\$0	\$0	\$0	\$0	\$0	\$0	\$0	\$0	\$400	\$0	\$0	\$0	\$2,000
SP1401	\$0	\$0	\$0	\$0	\$0	\$0	\$0	\$0	\$0	\$440,000	\$0	\$0	\$0	\$110,000	\$0	\$0	\$0	\$550,000
SP1419-18A1	\$0	\$0	\$0	\$0	\$9,000	\$0	\$0	\$0	\$0	\$0	\$0	\$0	\$0	\$1,000	\$0	\$0	\$0	\$10,000
SP1709	\$0	\$0	\$0	\$0	\$0	\$0	\$0	\$0	\$0	\$16,000	\$0	\$0	\$0	\$4,000	\$0	\$0	\$0	\$20,000
WI1001-17A2	\$0	\$0	\$0	\$4,000	\$0	\$0	\$0	\$0	\$0	\$0	\$0	\$0	\$0	\$1,000	\$0	\$0	\$0	\$5,000
SUBTOTAL	\$340,000	\$81,000	\$0	\$287,200	\$9,000	\$0	\$4,800	\$0	\$0	\$11,082,400	\$0	\$0	\$180,100	\$3,137,600	\$0	\$0	\$0	\$15,122,100
GRAND TOTAL	\$13,636,758	\$10,298,556	\$860,800	\$54,332,400	\$2,564,700	\$180,000	\$6,400	\$963,132	\$733,926	\$54,020,312	\$166,134	\$740,992	\$4,330,765	\$30,652,402	\$20,000	\$1,155,000	\$123,499	\$174,785,776

# FINANCIAL CONSTRAINT

## Roadways

	Federal Funding Source												TOTAL Federal Funds	Local	MoDOT Programmed Funds	Other	State Operations and Maintenance	TOTAL
	STBG-U	Safety	Bridge	STBG	I/M	130	NHS	BRM	BRO	NHPP	HPP	FEMA						
2018 Funds Programmed	\$9,106,340	\$4,639,856	\$1,600	\$16,786,402	\$981,200	\$0	\$0	\$0	\$574,959	\$12,431,198	\$166,134	\$580,494	\$45,268,183	\$2,768,223	\$8,972,274	\$96,749	\$4,779,389	\$61,884,818
2019 Funds Programmed	\$2,738,418	\$2,900,000	\$73,600	\$27,664,798	\$54,400	\$180,000	\$0	\$963,132	\$158,967	\$14,683,514	\$0	\$160,498	\$49,577,327	\$1,018,442	\$11,383,828	\$26,750	\$4,851,080	\$66,857,427
2020 Funds Programmed	\$1,452,000	\$2,677,700	\$785,600	\$9,594,000	\$1,520,100	\$0	\$1,600	\$0	\$0	\$15,823,200	\$0	\$0	\$31,854,200	\$364,000	\$8,333,700	\$0	\$4,923,846	\$45,475,746
2021 Funds Programmed	\$340,000	\$81,000	\$0	\$287,200	\$9,000	\$0	\$4,800	\$0	\$0	\$11,082,400	\$0	\$0	\$11,804,400	\$180,100	\$3,137,600	\$0	\$4,997,704	\$20,119,804
<b>Total</b>	<b>\$13,636,758</b>	<b>\$10,298,556</b>	<b>\$ 860,800</b>	<b>\$54,332,400</b>	<b>\$ 2,564,700</b>	<b>\$ 180,000</b>	<b>\$6,400</b>	<b>\$963,132</b>	<b>\$733,926</b>	<b>\$54,020,312</b>	<b>\$166,134</b>	<b>\$740,992</b>	<b>\$ 138,504,110</b>	<b>\$4,330,765</b>	<b>\$ 31,827,402</b>	<b>\$123,499</b>	<b>\$19,552,019</b>	<b>\$194,337,795</b>

	Prior Year	FY 2018	FY 2019	FY 2020	FY 2021	TOTAL
Available State and Federal Funding	\$0	\$42,451,600	\$54,679,300	\$49,650,800	\$44,779,200	\$191,560,900
Available Operations and Maintenance Funding	\$0	\$4,779,389	\$4,851,080	\$4,923,846	\$4,997,704	\$19,552,019
Funds from Other Sources	\$864,492	\$0	\$0	\$0	\$0	\$864,492
Available Suballocated Funding	\$18,576,393	\$5,968,827	\$6,088,203	\$6,209,967	\$6,088,203	\$42,931,594
<b>TOTAL AVAILABLE FUNDING</b>	<b>\$19,440,885</b>	<b>\$53,199,816</b>	<b>\$65,618,583</b>	<b>\$60,784,613</b>	<b>\$55,865,107</b>	<b>\$254,909,005</b>
Prior Year Funding	\$19,440,885	\$10,755,883	\$9,517,039	\$24,825,906		--
Programmed State and Federal Funding		(\$61,884,818)	(\$66,857,427)	(\$45,475,746)	(\$20,119,804)	(\$194,337,795)
<b>TOTAL REMAINING</b>	<b>\$19,440,885</b>	<b>\$10,755,883</b>	<b>\$9,517,039</b>	<b>\$24,825,906</b>	<b>\$60,571,210</b>	<b>\$60,571,210</b>

Additional Funds from Other Sources include one-time FEMA and SEMA grant funding for the Riverside Bridge Replacement.

Available State and Federal Funding shown here does not include funding Available shown on Bike/Ped Financial Constraint Page.