



**U.S. Department of Transportation**

**Federal Transit Administration**  
901 Locust, Room 404  
Kansas City, MO 64106  
816-329-3920  
816-329-3921 (fax)

**Federal Highway Administration**  
3220 W. Edgewood, Suite H  
Jefferson City, MO 65109  
573-636-7104  
573-636-9283 (fax)

January 7, 2015

Mr. Dave Nichols, Director  
Missouri Department of Transportation  
P.O. Box 270  
Jefferson City, Missouri 65102

Re: FHWA/FTA Approval of Amendment to the Missouri FY  
2015-2019 STIP to incorporate the Ozarks Transportation  
Organization (OTO) FY 2015-2018 Transportation  
Improvement Program (TIP) Amendment #2

Dear Mr. Nichols:

As requested in your letter dated December 29, 2014 the Federal Transit Administration (FTA) and Federal Highway Administration (FHWA) have reviewed the requested amendment to the FY 2015-2019 Missouri State Transportation Improvement Program (STIP) to incorporate the Ozarks Transportation Organization's (OTO) modification of their FY 2015- 2018 Transportation Improvement Program (TIP), as further described in your letter of January 7, 2015. The modification includes the addition of two new local public agency (LPA) sponsored highway projects and five new transit projects.

The OTO Board of Directors approved the TIP amendment on December 18, 2014. The Missouri governor approved the OTO FY2012-2015 TIP amendment on January 6, 2015.

In accordance with 23 CFR 450.218(b), we have determined that this STIP amendment is based on a transportation planning process that substantially meets the requirements of 23 U.S.C 134 and 135, 49 U.S.C. 5303 and 5304 and 23 CFR 450 Subparts A, B, and C. Based on our review, this STIP amendment request is approved.

If you have any questions, please contact Mark Bechtel at FTA (816) 329-3037 or Brad McMahon at FHWA (573) 638-2609.

Sincerely,

Mokhtee Ahmad  
Regional Administrator  
Federal Transit Administration

For:

For: Kevin Ward, P.E.  
Division Administrator  
Federal Highway Administration

cc: Sara Edwards, OTO  
Shelia Schmitt, City Utilities  
Greg Burris, Missouri State University  
Machelle Watkins, MoDOT  
Eva Voss, MoDOT  
Frank Miller, MoDOT Southwest District  
Sharon Monroe, MoDOT  
Mark Bechtel, FTA Region VII

## Missouri Department of Transportation

*David B. Nichols, Director*

573.751.2551  
Fax: 573.751.6555  
1.888.ASK MODOT (275.6636)

January 7, 2015

Mr. Kevin Ward  
Regional Administrator  
Federal Highway Administration  
3220 West Edgewood, Suite H  
Jefferson City, MO 65109

Mr. Mokhtee Ahmad  
Regional Administrator  
Federal Transit Administration  
901 Locust Street, Room 404  
Kansas City, MO 64106

Dear Messrs. Ward and Ahmad:

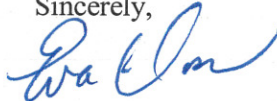
SUBJECT: Springfield Metropolitan Area  
FY 2015-2018 Transportation Improvement Program  
Ozarks Transportation Organization  
Approval to Incorporate TIP Amendment #2 into FY 2015-2019 STIP

As required by the 2012 Moving Ahead for Progress in the 21<sup>st</sup> Century Act, MAP-21, MoDOT received approval from Governor Nixon for a TIP amendment in the Springfield metropolitan area which includes the addition of two locally sponsored projects and five transit projects.

Enclosed is a copy of the Governor's approval letter and supporting documentation. The Ozarks Transportation Organization Board of Directors approved the TIP amendment on December 18, 2014. All public involvement considerations were met and fiscal constraint has been ensured.

We request approval of incorporating this TIP amendment into the FY 2015-2019 State Transportation Improvement Program (STIP) at your earliest convenience. TIP projects and priorities are identified with the assistance of our planning partners using MoDOT's award-winning Planning Framework process. More information about the Planning Framework may be found at [http://www.modot.mo.gov/plansandprojects/planning\\_projects/PlanningFramework](http://www.modot.mo.gov/plansandprojects/planning_projects/PlanningFramework).

Sincerely,



Eva Voss  
Sr. Transportation Planner

ev

J:\URBAN\OTO - Springfield\FY 2015\TIP Amendments\TIP aMENTMENT 2\MoDOT letter to ONEDOT.docx

Enclosure

Copies: Mr. Brad McMahon-FHWA Mr. Jeremiah Shuler-FTA Ms. Sara Fields-OTO  
Mr. Frank Miller-SW Ms. Natasha Longpine-OTO Mr. Dion Knipp-MO



*Our mission is to provide a world-class transportation experience that delights our customers and promotes a prosperous Missouri.*

[www.modot.org](http://www.modot.org)



December 19, 2014

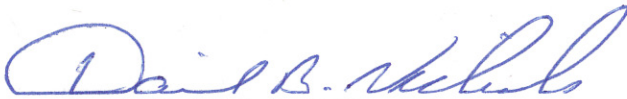
The Honorable Jeremiah W. (Jay) Nixon  
Governor of Missouri  
State Capitol  
Jefferson City, MO 65101

Dear Governor Nixon:

On December 18, 2014, the Ozarks Transportation Organization (OTO) Board of Directors approved an amendment to the FY 2015-2018 Transportation Improvement Plan (TIP) for the Springfield metropolitan area. The TIP amendment covers the addition of two locally sponsored projects and five transit projects. MoDOT is satisfied the federal requirements have been met in the development of this TIP amendment, including the opportunity for the public to comment on projects. One public comment was received and is attached.

Enclosed is a copy of the TIP amendment for your review. We request approval of this action at your earliest convenience, so project authorization can proceed in the Springfield metropolitan area.


Sincerely,



David B. Nichols, P.E.  
Director

Enclosure

Approved:

 Date: January 6, 2015  
Title: Governor of Missouri



## OZARKS TRANSPORTATION ORGANIZATION

A METROPOLITAN PLANNING ORGANIZATION

205 PARK CENTRAL EAST, SUITE 205 SPRINGFIELD, MO 65806 417-865-3042 [p] 417-862-6013 [f]

18 December 2014

Ms. Eva Voss  
Transportation Planning  
Missouri Department of Transportation  
P. O. Box 270  
Jefferson City, Missouri 65102

Dear Ms. Voss:

We respectfully request the approval of the FY 2015-2018 Ozarks Transportation Organization Transportation Improvement Program (TIP) Amendment Number Two. The Board of Directors adopted this amendment on December 18, 2014. The adoption included demonstration of fiscal constraint as required by federal regulations. Public comment was taken in accordance with federal law and in accordance with the OTO Public Involvement Policy and one public comment was received. This amendment includes the following seven (7) changes. A description and additional TIP information is included with this letter.

- Bridge Replacement, Bridge #1670228 (GR1601)
- East-West Arterial (Riverbluff Blvd) Phase I (GR1502)
- Paratransit Bus Replacement (CU1506)
- FTA 5310 New Freedom-Type Projects (CU1514)
- CU 5310 Administration (CU1517)
- FTA 5310 Human Agency Capital Purchases (MO1506)
- MoDOT 5310 Admin (MO1507)

Please find enclosed the requested TIP amendment. Please let me know if you need any other information.

Sincerely,

Natasha L. Longpine, AICP  
Principal Planner



OZARKSTRANSPORTATION.ORG

## **Amendment Two to the FY 2015-2018 Transportation Improvement Program**

### **Ozarks Transportation Organization (Springfield, MO Area MPO)**

#### **AGENDA DESCRIPTION:**

There are seven (7) items included as part of Amendment Two to the FY 2015-2018 Transportation Improvement Program.

1. **\*New\*** Bridge Replacement, Bridge #1670228 (GR1601)  
Replace existing bridge and upgrade approaches on Farm Road 167, using \$320,000 in BRO funding, for a total programmed project amount of \$400,000.
2. **\*New\*** East-West Arterial (Riverbluff Blvd) Phase I (GR1502)  
Design and Environmental Approval for the East-West Arterial from Farm Road 141 to Campbell Avenue for a total programmed amount of \$1,200,000.
3. **\*New\*** Paratransit Bus Replacement (CU1506)  
Replacement of 2 CU Paratransit Buses using \$262,372 in FTA Section 5339 funding for a total programmed amount of \$308,673.
4. **\*New\*** FTA 5310 New Freedom-Type Projects (CU1514)  
New service or capital projects beyond the Americans with Disabilities Act for CU's Transit Service for a total programmed amount of \$221,679, funded through the Enhanced Mobility of Seniors and Individuals with Disabilities program.
5. **\*New\*** CU 5310 Administration (CU1517)  
Funding in the amount of \$19,705 for CU's administration of its FTA 5310 projects.
6. **\*New\*** FTA 5310 Human Agency Capital Purchases (MO1506)  
Funding for area Human Service Agencies to purchase vehicles through the Enhanced Mobility of Seniors and Individuals with Disabilities program in the total programmed amount of \$348,351.
7. **\*New\*** MoDOT 5310 Admin (MO1507)  
Funding in the amount of \$30,965 for MoDOT's administration of FTA 5310 projects.

#### **BOARD OF DIRECTORS ACTION:**

A member of the Board of Directors made the following motion:

"Move to approve the seven items included as part of Amendment Two to the FY 2015-2018 Transportation Improvement Program."

The motion was seconded and unanimously approved.



# Transportation Improvement Program - FY 2015-2018

Project Detail by Section and Project Number with Map

## E) Roadways Section

**TIP # GR1601** BRIDGE REPLACEMENT, BRIDGE #1670228

**Route** Farm Road 167

**From** Farm Road 167

**To** Farm Road 167

**Location/Agency** Greene County

**Federal Agency** FHWA

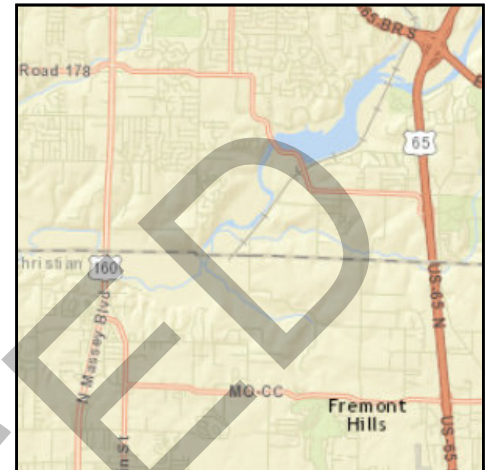
**Responsible Agency** Greene County

**Federal Funding Category** BRO

**MoDOT Funding Category** N/A

**AC Year of Conv.**

**STIP #**



### Project Description

Replace existing bridge and upgrade approaches.

Fund Code	Source	Phase	FY2015	FY2016	FY2017	FY2018	Total
FHWA (BRO)	Federal	CON	\$0	\$320,000	\$0	\$0	\$320,000
LOCAL	Local	CON	\$0	\$80,000	\$0	\$0	\$80,000
<b>Totals</b>			<b>\$0</b>	<b>\$400,000</b>	<b>\$0</b>	<b>\$0</b>	<b>\$400,000</b>

### Notes

Source of Local Funds: Greene County Road and Bridge Fund.

<b>Prior Cost</b>	\$0
<b>Future Cost</b>	\$0
<b>Total Cost</b>	\$400,000



# Transportation Improvement Program - FY 2015-2018

Project Detail by Section and Project Number with Map

## E) Roadways Section

**TIP # GR1502** EAST-WEST ARTERIAL (RIVERBLUFF BLVD) PHASE I

**Route** East-West Arterial

**From** Farm Road 141

**To** Campbell Avenue

**Location/Agency** Greene County

**Federal Agency** FHWA

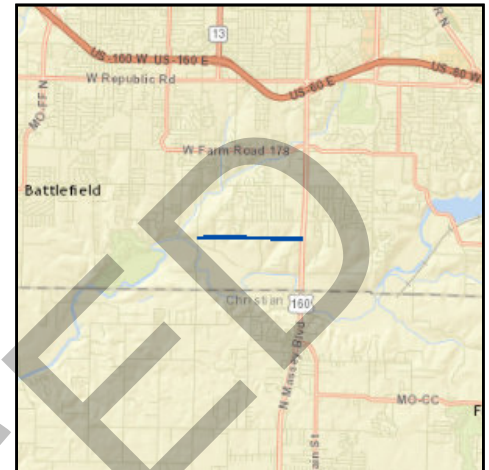
**Responsible Agency** Greene County

**Federal Funding Category** STP-U

**MoDOT Funding Category** N/A

**AC Year of Conv.**

**STIP #**



### Project Description

Design/Environmental Approval from Farm Road 141 to Campbell Avenue.

Fund Code	Source	Phase	FY2015	FY2016	FY2017	FY2018	Total
FHWA (STP-U)	Federal	ENG	\$960,000	\$0	\$0	\$0	\$960,000
LOCAL	Local	ENG	\$240,000	\$0	\$0	\$0	\$240,000
<b>Totals</b>			<b>\$1,200,000</b>	<b>\$0</b>	<b>\$0</b>	<b>\$0</b>	<b>\$1,200,000</b>

### Notes

Source of Local Funds: Greene County Road and Bridge Fund.

<b>Prior Cost</b>	\$0
<b>Future Cost</b>	\$0
<b>Total Cost</b>	\$1,200,000



# FINANCIAL SUMMARY

## Roadways

### YEARLY SUMMARY

	Federal							Local	State			Other	
PROJECT	FHWA (STP-U)	FHWA (SAFETY)	FHWA (BRIDGE)	FHWA (STP)	FHWA (130)	FHWA (HPP)	FHWA (BRO)	LOCAL	MoDOT	MoDOT-GCSA	MoDOT-AC	OTHER	TOTAL
FY 2015													
BA1101	\$8,000	\$0	\$0	\$0	\$0	\$0	\$0	\$2,000	\$0	\$0	\$0	\$0	\$10,000
CC0901	\$0	\$0	\$0	\$0	\$0	\$0	\$0	\$0	\$400	\$0	\$1,600	\$0	\$2,000
CC1102	\$0	\$0	\$0	\$0	\$0	\$0	\$0	\$0	\$400	\$0	\$1,600	\$0	\$2,000
CC1110	\$2,072,000	\$0	\$0	\$0	\$0	\$0	\$0	\$1,557,044	\$97,600	\$0	\$3,893,356	\$0	\$7,620,000
GR1010	\$0	\$911,000	\$0	\$0	\$0	\$0	\$0	\$0	\$2,369,000	\$0	\$9,071,000	\$0	\$12,351,000
GR1104	\$0	\$0	\$0	\$0	\$160,000	\$0	\$0	\$0	\$0	\$40,000	\$0	\$0	\$200,000
GR1213	\$0	\$0	\$0	\$0	\$0	\$0	\$1,133,600	\$283,400	\$0	\$0	\$0	\$0	\$1,417,000
GR1312	\$0	\$0	\$0	\$0	\$0	\$0	\$371,200	\$92,800	\$0	\$0	\$0	\$0	\$464,000
GR1402	\$0	\$0	\$0	\$168,800	\$1,049,967	\$0	\$0	\$0	\$105,200	\$1,048,968	\$0	\$126,065	\$2,499,000
GR1403	\$0	\$0	\$0	\$0	\$0	\$0	\$0	\$0	\$400	\$0	\$1,600	\$0	\$2,000
GR1408	\$0	\$0	\$0	\$0	\$0	\$0	\$0	\$0	\$400	\$0	\$1,600	\$0	\$2,000
GR1502	\$960,000	\$0	\$0	\$0	\$0	\$0	\$0	\$240,000	\$0	\$0	\$0	\$0	\$1,200,000
MO1105	\$0	\$0	\$0	\$0	\$0	\$0	\$0	\$0	\$284,000	\$0	\$0	\$0	\$284,000
MO1201	\$0	\$1,800	\$0	\$0	\$0	\$0	\$0	\$0	\$200	\$0	\$0	\$0	\$2,000
MO1404	\$0	\$0	\$0	\$0	\$0	\$0	\$0	\$0	\$400	\$0	\$1,600	\$0	\$2,000
MO1405	\$0	\$0	\$0	\$0	\$0	\$0	\$0	\$0	\$25,000	\$0	\$0	\$0	\$25,000
MO1408	\$0	\$0	\$0	\$0	\$0	\$0	\$0	\$0	\$196,000	\$0	\$784,000	\$0	\$980,000
MO1409	\$0	\$0	\$0	\$0	\$0	\$0	\$0	\$0	\$330,800	\$0	\$1,323,200	\$0	\$1,654,000
MO1501	\$0	\$32,000	\$0	\$0	\$0	\$0	\$0	\$0	\$0	\$0	\$0	\$0	\$32,000
MO1503	\$276,000	\$0	\$0	\$0	\$0	\$0	\$0	\$69,000	\$134,600	\$0	\$538,400	\$0	\$1,018,000
MO1504	\$0	\$0	\$0	\$0	\$0	\$0	\$0	\$0	\$21,600	\$0	\$194,400	\$0	\$216,000
MO1505	\$0	\$0	\$0	\$0	\$0	\$0	\$0	\$0	\$37,800	\$0	\$151,200	\$0	\$189,000
MO1601	\$0	\$0	\$0	\$0	\$0	\$0	\$0	\$0	\$2,000	\$0	\$0	\$0	\$2,000
MO1604	\$0	\$55,800	\$0	\$0	\$0	\$0	\$0	\$0	\$6,200	\$0	\$0	\$0	\$62,000
MO1605	\$0	\$0	\$0	\$0	\$0	\$0	\$0	\$0	\$400	\$0	\$1,600	\$0	\$2,000
MO1705	\$0	\$0	\$0	\$0	\$0	\$0	\$0	\$0	\$400	\$0	\$1,600	\$0	\$2,000
NX0906	\$0	\$0	\$0	\$0	\$0	\$0	\$0	\$0	\$10,800	\$0	\$43,200	\$0	\$54,000
OK1401	\$0	\$0	\$0	\$0	\$0	\$0	\$0	\$0	\$400	\$0	\$1,600	\$0	\$2,000
RG0901	\$0	\$0	\$0	\$0	\$0	\$0	\$0	\$0	\$400	\$0	\$1,600	\$0	\$2,000
RG1201	\$0	\$0	\$0	\$0	\$0	\$0	\$0	\$0	\$400	\$0	\$1,600	\$0	\$2,000
RP1401	\$0	\$0	\$0	\$0	\$0	\$0	\$0	\$0	\$400	\$0	\$1,600	\$0	\$2,000
SP1018	\$0	\$0	\$248,000	\$0	\$0	\$0	\$0	\$0	\$62,000	\$0	\$0	\$0	\$310,000
SP1106	\$0	\$0	\$0	\$0	\$0	\$0	\$0	\$0	\$1,000	\$0	\$4,000	\$0	\$5,000
SP1109	\$1,966,300	\$0	\$0	\$0	\$2,250,000	\$0	\$0	\$0	\$1,433,140	\$750,000	\$4,016,560	\$0	\$10,416,000
SP1112	\$0	\$0	\$0	\$0	\$0	\$0	\$0	\$0	\$400	\$0	\$1,600	\$0	\$2,000
SP1114	\$0	\$0	\$0	\$0	\$160,000	\$0	\$0	\$0	\$0	\$40,000	\$0	\$0	\$200,000
SP1120	\$0	\$0	\$0	\$0	\$4,000	\$0	\$0	\$0	\$0	\$1,000	\$0	\$0	\$5,000
SP1204	\$0	\$0	\$0	\$0	\$0	\$0	\$0	\$0	\$400	\$0	\$1,600	\$0	\$2,000
SP1209	\$0	\$0	\$0	\$499,915	\$0	\$0	\$0	\$124,979	\$0	\$0	\$0	\$0	\$624,894
SP1315	\$0	\$0	\$0	\$0	\$0	\$0	\$0	\$0	\$88,200	\$0	\$352,800	\$0	\$441,000
SP1316	\$0	\$0	\$0	\$0	\$0	\$0	\$0	\$0	\$391,800	\$0	\$1,567,200	\$0	\$1,959,000
SP1318	\$0	\$0	\$0	\$0	\$0	\$0	\$0	\$0	\$233,000	\$0	\$932,000	\$0	\$1,165,000
SP1321	\$10,000	\$0	\$0	\$0	\$0	\$0	\$0	\$3,984	\$0	\$0	\$0	\$0	\$13,984
SP1323	\$47,000	\$0	\$0	\$0	\$0	\$0	\$0	\$10,000	\$32,600	\$0	\$126,400	\$0	\$216,000

FY 2015 continued on next page

# FINANCIAL SUMMARY

## Roadways

### YEARLY SUMMARY

	Federal							Local	State			Other	
PROJECT	FHWA (STP-U)	FHWA (SAFETY)	FHWA (BRIDGE)	FHWA (STP)	FHWA (130)	FHWA (HPP)	FHWA (BRO)	LOCAL	MoDOT	MoDOT-GCSA	MoDOT-AC	OTHER	TOTAL
FY 2015 continued													
SP1401	\$0	\$0	\$0	\$0	\$0	\$0	\$0	\$0	\$1,000	\$0	\$4,000	\$0	\$5,000
SP1403	\$0	\$0	\$0	\$0	\$0	\$0	\$0	\$0	\$120,200	\$0	\$480,800	\$0	\$601,000
SP1405	\$0	\$0	\$0	\$0	\$0	\$0	\$0	\$0	\$400	\$0	\$1,600	\$0	\$2,000
SP1408	\$0	\$0	\$0	\$0	\$0	\$0	\$0	\$0	\$255,400	\$0	\$1,021,600	\$0	\$1,277,000
SP1409	\$0	\$0	\$0	\$0	\$0	\$0	\$0	\$0	\$7,300	\$0	\$65,700	\$0	\$73,000
SP1410	\$0	\$0	\$0	\$0	\$0	\$0	\$0	\$0	\$40,000	\$0	\$160,000	\$0	\$200,000
SP1411	\$0	\$0	\$0	\$0	\$0	\$0	\$0	\$0	\$109,600	\$0	\$438,400	\$0	\$548,000
SP1415	\$0	\$0	\$0	\$0	\$0	\$0	\$0	\$0	\$22,800	\$0	\$91,200	\$0	\$114,000
SP1416	\$0	\$0	\$0	\$0	\$0	\$0	\$0	\$0	\$400	\$0	\$1,600	\$0	\$2,000
SP1501	\$0	\$0	\$0	\$0	\$0	\$0	\$0	\$0	\$75,200	\$0	\$300,800	\$0	\$376,000
WI1301	\$0	\$0	\$0	\$0	\$0	\$0	\$0	\$0	\$1,000	\$0	\$4,000	\$0	\$5,000
WI1501	\$40,000	\$0	\$0	\$0	\$0	\$0	\$0	\$10,000	\$0	\$0	\$0	\$0	\$50,000
SUBTOTAL	\$5,379,300	\$1,000,600	\$248,000	\$668,715	\$3,623,967	\$0	\$1,504,800	\$2,393,207	\$6,501,040	\$1,879,968	\$25,588,216	\$126,065	\$48,913,878
FY 2016													
CC0901	\$0	\$0	\$0	\$0	\$0	\$0	\$0	\$0	\$400	\$0	\$1,600	\$0	\$2,000
CC1102	\$0	\$0	\$0	\$0	\$0	\$0	\$0	\$0	\$400	\$0	\$1,600	\$0	\$2,000
GR1104	\$0	\$0	\$0	\$0	\$128,000	\$0	\$0	\$0	\$0	\$32,000	\$0	\$0	\$160,000
GR1403	\$0	\$0	\$0	\$0	\$0	\$0	\$0	\$0	\$400	\$0	\$1,600	\$0	\$2,000
GR1408	\$0	\$0	\$0	\$0	\$0	\$0	\$0	\$0	\$400	\$0	\$1,600	\$0	\$2,000
GR1601	\$0	\$0	\$0	\$0	\$0	\$0	\$320,000	\$80,000	\$0	\$0	\$0	\$0	\$400,000
MO1105	\$0	\$0	\$0	\$0	\$0	\$0	\$0	\$0	\$284,000	\$0	\$0	\$0	\$284,000
MO1201	\$0	\$2,700	\$0	\$0	\$0	\$0	\$0	\$0	\$300	\$0	\$0	\$0	\$3,000
MO1404	\$0	\$0	\$0	\$0	\$0	\$0	\$0	\$0	\$4,800	\$0	\$19,200	\$0	\$24,000
MO1601	\$0	\$50,000	\$0	\$0	\$0	\$0	\$0	\$0	\$3,000	\$0	\$0	\$0	\$53,000
MO1603	\$284,000	\$0	\$0	\$0	\$0	\$0	\$0	\$71,000	\$134,600	\$0	\$538,400	\$0	\$1,028,000
MO1604	\$0	\$980,100	\$0	\$0	\$0	\$0	\$0	\$0	\$108,900	\$0	\$0	\$0	\$1,089,000
MO1605	\$0	\$0	\$0	\$0	\$0	\$0	\$0	\$0	\$38,800	\$0	\$155,200	\$0	\$194,000
MO1705	\$0	\$0	\$0	\$0	\$0	\$0	\$0	\$0	\$400	\$0	\$1,600	\$0	\$2,000
NX0906	\$1,307,001	\$0	\$0	\$0	\$0	\$0	\$0	\$326,750	\$362,000	\$0	\$1,448,000	\$0	\$3,443,751
OK1401	\$0	\$0	\$0	\$0	\$0	\$0	\$0	\$0	\$400	\$0	\$1,600	\$0	\$2,000
RG0901	\$0	\$0	\$0	\$0	\$0	\$0	\$0	\$0	\$400	\$0	\$1,600	\$0	\$2,000
RG1201	\$0	\$0	\$0	\$0	\$0	\$0	\$0	\$0	\$1,400	\$0	\$5,600	\$0	\$7,000
RP1401	\$0	\$0	\$0	\$0	\$0	\$0	\$0	\$0	\$41,000	\$0	\$164,000	\$0	\$205,000
SP1018	\$0	\$0	\$4,651,200	\$0	\$0	\$0	\$0	\$0	\$1,162,800	\$0	\$0	\$0	\$5,814,000
SP1106	\$0	\$0	\$0	\$0	\$0	\$0	\$0	\$0	\$400	\$0	\$1,600	\$0	\$2,000
SP1112	\$0	\$0	\$0	\$0	\$0	\$0	\$0	\$0	\$16,000	\$0	\$64,000	\$0	\$80,000
SP1204	\$0	\$0	\$0	\$0	\$0	\$0	\$0	\$0	\$400	\$0	\$1,600	\$0	\$2,000
SP1321	\$10,000	\$0	\$0	\$0	\$0	\$0	\$0	\$3,984	\$0	\$0	\$0	\$0	\$13,984
SP1323	\$681,000	\$0	\$0	\$0	\$0	\$0	\$0	\$172,000	\$156,600	\$0	\$626,400	\$0	\$1,636,000
SP1401	\$0	\$0	\$0	\$0	\$0	\$0	\$0	\$0	\$5,200	\$0	\$20,800	\$0	\$26,000
SP1405	\$0	\$0	\$0	\$0	\$0	\$0	\$0	\$0	\$400	\$0	\$1,600	\$0	\$2,000
SP1409	\$0	\$0	\$0	\$0	\$0	\$0	\$0	\$0	\$996,400	\$0	\$8,967,600	\$0	\$9,964,000
SP1410	\$0	\$0	\$0	\$0	\$0	\$0	\$0	\$0	\$1,833,000	\$0	\$7,332,000	\$0	\$9,165,000
SP1415	\$734,000	\$0	\$0	\$0	\$0	\$0	\$0	\$184,000	\$74,000	\$0	\$298,000	\$0	\$1,290,000
WI1301	\$0	\$0	\$0	\$0	\$0	\$0	\$0	\$0	\$10,000	\$0	\$40,000	\$0	\$50,000
SUBTOTAL	\$3,016,001	\$1,032,800	\$4,651,200	\$0	\$128,000	\$0	\$320,000	\$837,734	\$5,236,800	\$32,000	\$19,695,200	\$0	\$34,949,735

# FINANCIAL SUMMARY

## Roadways

### YEARLY SUMMARY

	Federal							Local	State			Other	
PROJECT	FHWA (STP-U)	FHWA (SAFETY)	FHWA (BRIDGE)	FHWA (STP)	FHWA (130)	FHWA (HPP)	FHWA (BRO)	LOCAL	MoDOT	MoDOT-GCSA	MoDOT-AC	OTHER	TOTAL
FY 2017													
CC0901	\$0	\$0	\$0	\$0	\$0	\$0	\$0	\$0	\$400	\$0	\$1,600	\$0	\$2,000
CC1102	\$0	\$0	\$0	\$0	\$0	\$0	\$0	\$0	\$400	\$0	\$1,600	\$0	\$2,000
GR1403	\$0	\$0	\$0	\$0	\$0	\$0	\$0	\$0	\$400	\$0	\$1,600	\$0	\$2,000
MO1105	\$0	\$0	\$0	\$0	\$0	\$0	\$0	\$0	\$284,000	\$0	\$0	\$0	\$284,000
MO1201	\$0	\$80,100	\$0	\$0	\$0	\$0	\$0	\$0	\$8,900	\$0	\$0	\$0	\$89,000
MO1404	\$0	\$0	\$0	\$0	\$0	\$0	\$0	\$0	\$1,115,800	\$0	\$4,463,200	\$0	\$5,579,000
MO1701	\$292,000	\$0	\$0	\$0	\$0	\$0	\$0	\$73,000	\$134,600	\$0	\$538,400	\$0	\$1,038,000
MO1705	\$0	\$0	\$0	\$0	\$0	\$0	\$0	\$0	\$40,000	\$0	\$160,000	\$0	\$200,000
OK1401	\$0	\$0	\$0	\$0	\$0	\$0	\$0	\$0	\$400	\$0	\$1,600	\$0	\$2,000
RG0901	\$0	\$0	\$0	\$0	\$0	\$0	\$0	\$0	\$400	\$0	\$1,600	\$0	\$2,000
RG1201	\$0	\$0	\$0	\$0	\$0	\$0	\$0	\$0	\$67,600	\$0	\$270,400	\$0	\$338,000
SP1106	\$0	\$0	\$0	\$0	\$0	\$0	\$0	\$0	\$400	\$0	\$1,600	\$0	\$2,000
SP1112	\$0	\$0	\$0	\$0	\$0	\$0	\$0	\$0	\$30,000	\$0	\$120,000	\$0	\$150,000
SP1204	\$0	\$0	\$0	\$0	\$0	\$0	\$0	\$0	\$205,200	\$0	\$820,800	\$0	\$1,026,000
SP1401	\$0	\$0	\$0	\$0	\$0	\$0	\$0	\$0	\$91,600	\$0	\$366,400	\$0	\$458,000
SP1405	\$0	\$0	\$0	\$0	\$0	\$0	\$0	\$0	\$400	\$0	\$1,600	\$0	\$2,000
SP1415	\$1,089,292	\$0	\$0	\$0	\$0	\$0	\$0	\$271,823	\$326,777	\$0	\$1,305,108	\$0	\$2,993,000
WI1301	\$0	\$0	\$0	\$0	\$0	\$0	\$0	\$0	\$164,800	\$0	\$659,200	\$0	\$824,000
SUBTOTAL	\$1,381,292	\$80,100	\$0	\$0	\$0	\$0	\$0	\$344,823	\$2,472,077	\$0	\$8,714,708	\$0	\$12,993,000
FY 2018													
CC0901	\$0	\$0	\$0	\$0	\$0	\$0	\$0	\$0	\$400	\$0	\$1,600	\$0	\$2,000
CC1102	\$0	\$0	\$0	\$0	\$0	\$0	\$0	\$0	\$400	\$0	\$1,600	\$0	\$2,000
GR1403	\$0	\$0	\$0	\$0	\$0	\$0	\$0	\$0	\$400	\$0	\$1,600	\$0	\$2,000
MO1105	\$0	\$0	\$0	\$0	\$0	\$0	\$0	\$0	\$284,000	\$0	\$0	\$0	\$284,000
MO1801	\$300,000	\$0	\$0	\$0	\$0	\$0	\$0	\$75,000	\$134,600	\$0	\$538,400	\$0	\$1,048,000
OK1401	\$0	\$0	\$0	\$0	\$0	\$0	\$0	\$0	\$400	\$0	\$1,600	\$0	\$2,000
RG0901	\$0	\$0	\$0	\$0	\$0	\$0	\$0	\$0	\$400	\$0	\$1,600	\$0	\$2,000
SP1106	\$0	\$0	\$0	\$100,000	\$0	\$0	\$0	\$1,179,000	\$313,000	\$0	\$1,252,000	\$0	\$2,844,000
SP1112	\$0	\$0	\$0	\$0	\$0	\$166,134	\$0	\$0	\$792,000	\$0	\$3,001,866	\$0	\$3,960,000
SP1405	\$0	\$0	\$0	\$0	\$0	\$0	\$0	\$0	\$400	\$0	\$1,600	\$0	\$2,000
SUBTOTAL	\$300,000	\$0	\$0	\$100,000	\$0	\$166,134	\$0	\$1,254,000	\$1,526,000	\$0	\$4,801,866	\$0	\$8,148,000
GRAND TOTAL	\$10,076,593	\$2,113,500	\$4,899,200	\$768,715	\$3,751,967	\$166,134	\$1,824,800	\$4,829,764	\$15,735,917	\$1,911,968	\$58,799,990	\$126,065	\$105,004,613

# FINANCIAL CONSTRAINT

## Roadways

	Federal Funding Source												
	STP-U	Safety	Bridge	STP	130	HPP	BRO	TOTAL Federal Funds	Local	MoDOT Programmed Funds	Other	State Operations and Maintenance	TOTAL
2015 Funds Programmed	\$5,379,300	\$1,000,600	\$248,000	\$668,715	\$3,623,967	\$0	\$1,504,800	\$12,425,382	\$2,393,207	\$33,969,224	\$126,065	\$6,525,006	\$55,438,884
2016 Funds Programmed	\$3,016,001	\$1,032,800	\$4,651,200	\$0	\$128,000	\$0	\$320,000	\$9,148,001	\$837,734	\$24,964,000	\$0	\$665,506	\$35,615,241
2017 Funds Programmed	\$1,381,292	\$80,100	\$0	\$0	\$0	\$0	\$0	\$1,461,392	\$344,823	\$11,186,785	\$0	\$6,788,616	\$19,781,616
2018 Funds Programmed	\$300,000	\$0	\$0	\$100,000	\$0	\$166,134	\$0	\$566,134	\$1,254,000	\$6,327,866	\$0	\$6,924,388	\$15,072,388
Total	\$10,076,593	\$2,113,500	\$4,899,200	\$768,715	\$3,751,967	\$166,134	\$1,824,800	\$23,600,909	\$4,829,764	\$76,447,875	\$126,065	\$20,903,516	\$125,908,129

	Prior Year	FY 2015	FY 2016	FY 2017	FY 2018	TOTAL
Available State and Federal Funding	\$24,201,377	\$27,240,000	\$25,680,000	\$8,750,000	\$8,090,000	\$93,961,377
Available Operations and Maintenance Funding	\$ -	\$6,525,006	\$665,506	\$6,788,616	\$6,924,388	\$20,903,516
Available Suballocated STP-U/Small Urban	\$23,213,240	\$5,410,663	\$5,414,570	\$4,599,063	\$4,599,063	\$43,236,599
Available Suballocated BRM	\$1,542,036	\$338,170	\$338,170	\$338,170	\$338,170	\$2,894,716
<b>TOTAL AVAILABLE FUNDING</b>	<b>\$48,956,653</b>	<b>\$39,513,839</b>	<b>\$32,098,246</b>	<b>\$20,475,849</b>	<b>\$19,951,621</b>	<b>\$160,996,208</b>
Prior Year Funding	\$ -	\$48,956,653	\$35,550,880	\$32,871,619	\$33,910,675	-
Programmed State and Federal Funding	\$ -	(\$52,919,612)	(\$34,777,507)	(\$19,436,793)	(\$13,818,388)	(\$120,952,300)
<b>TOTAL REMAINING</b>	<b>\$48,956,653</b>	<b>\$35,550,880</b>	<b>\$32,871,619</b>	<b>\$33,910,675</b>	<b>\$40,043,908</b>	<b>\$40,043,908</b>

Remaining State and Federal Funding	\$3,989,186
Remaining Suballocated STP-Urban/Small Urban	\$33,160,006
Remaining Suballocated BRM	\$2,894,716
<b>TOTAL REMAINING</b>	<b>\$40,043,908</b>

declining revenues from the Highway Trust Fund, as well as MoDOT's declining ability to match federal funds, due to a decrease in projected state revenue. This table does not include OTO sub-allocated federal funding, such as STP-Urban, BRM, or Enhancement. Transit funding includes all formula funding distributed to the Springfield, MO area for FTA Sections 5307, 5310, and 5339 funding.

<b>Table G.1</b>	<b>2015</b>	<b>2016</b>	<b>2017</b>	<b>2018</b>
<b>Roadway Funding</b>	\$27,240,000	\$25,680,000	\$8,750,000	\$8,090,000
<b>Transit Funding</b>	\$3,026,518	\$3,026,518	\$3,026,518	\$3,026,518

The Ozarks Transportation Organization maintains fund balances for STP-Urban, On-System Bridge (BRM), and Transportation Alternative Program funds, making projections based on funding received in prior years, as well as funding allocations in the federal transportation bill. A three percent inflation rate has been used to forecast revenues and expenditures. OTO has accumulated balances in these funds from prior years.

The TIP financial element is consistent with the OTO Long Range Transportation Plan, *Journey 2035*.

## FEDERAL SUB-ALLOCATED REVENUE

The Ozarks Transportation Organization is responsible for selecting projects within three federal revenue categories. This means that OTO is responsible for project selection, programming, reasonable progress, and the maintenance of fund balances for STP-Urban, On-System Bridge (BRM), and Transportation Alternative Program funding categories. These fund balances are shown below.

OTO has been receiving sub-allocated funding since 2003. The funds which have accumulated "except for Transit" since then are referred to as "Carryover Balance" below. OTO has elected to maintain a healthy reserve of sub-allocated STP-Urban funding in order to be able to fund larger regionally significant projects, hence the larger carryover balance shown.

<b>Table G.2 STP-Urban/Small Urban</b>	
Carryover Balance through FY2014	\$23,213,240
Anticipated Allocation FY2015	\$5,410,663
Anticipated Allocation FY2016	\$5,414,570
Anticipated Allocation FY2017	\$4,599,063
Anticipated Allocation FY2018	\$4,599,063
Programmed through FY2018	(\$10,076,593)
<b>Estimated Carryover Balance Through FY 2018</b>	<b>\$33,160,006</b>

<b>Table G.3 On-System Bridge (BRM)</b>	
Carryover Balance through FY2014	\$1,542,036
Anticipated Allocation FY2015	\$338,170
Anticipated Allocation FY2016	\$338,170
Anticipated Allocation FY2017	\$338,170
Anticipated Allocation FY2018	\$338,170
Programmed through FY2018	(\$1,189,657)
<b>Estimated Carryover Balance Through FY 2018</b>	<b>\$1,705,059</b>



## REVENUE

An explanation of revenue sources that provide for the operation and maintenance of the transportation system as well as the capital improvements to the transportation system may be found in the preceding pages under explanation of fiscal constraint.

The following table highlights the ability of OTO jurisdictions to deliver local projects as shown in the project pages.

<b>Table G.9 Revenue</b>	<b>FY 2015</b>	<b>FY 2016</b>	<b>FY 2017</b>	<b>FY 2018</b>
<b>City of Battlefield</b>				
Total Available Revenue	\$232,024.00	\$232,024.00	\$232,024.00	\$232,024.00
Estimated Operations and Maintenance Expenditures	(\$3,731.00)	(\$3,806.00)	(\$3,882.00)	(\$3,960.00)
Estimated TIP Project Expenditures	(\$2,000.00)	\$0.00	\$0.00	\$0.00
Amount Available for Local Projects	\$226,293.00	\$228,218.00	\$228,142.00	\$228,064.00
<b>City of Nixa</b>				
Total Available Revenue (prior reserves included)	\$1,724,056.00	\$1,724,056.00	\$1,724,056.00	\$1,724,056.00
Estimated Operations and Maintenance Expenditures	(\$25,424.00)	(\$25,932.00)	(\$26,451.00)	(\$26,980.00)
Estimated TIP Project Expenditures	\$0.00	(\$326,750.00)	\$0.00	\$0.00
Amount Available for Local Projects	\$1,698,632.00	\$1,371,374.00	\$1,697,605.00	\$1,697,076.00
<b>City of Ozark</b>				
Total Available Revenue	\$640,830.00	\$640,830.00	\$640,830.00	\$640,830.00
Estimated Operations and Maintenance Expenditures	(\$60,512.00)	(\$61,722.00)	(\$62,956.00)	(\$64,215.00)
Estimated TIP Project Expenditures	\$0.00	\$0.00	\$0.00	\$0.00
Amount Available for Local Projects	\$580,318.00	\$579,108.00	\$577,874.00	\$576,615.00
<b>City of Republic</b>				
Total Available Revenue	\$1,670,475.00	\$1,670,475.00	\$1,670,475.00	\$1,670,475.00
Estimated Operations and Maintenance Expenditures	(\$36,355.00)	(\$37,082.00)	(\$37,824.00)	(\$38,580.00)
Estimated TIP Project Expenditures	\$0.00	\$0.00	\$0.00	\$0.00
Amount Available for Local Projects	\$1,634,120.00	\$1,633,393.00	\$1,632,651.00	\$1,631,895.00
<b>City of Springfield</b>				
Total Available Revenue	\$21,305,118.00	\$21,305,118.00	\$21,305,118.00	\$21,305,118.00
Estimated Operations and Maintenance Expenditures	(\$2,325,881.00)	(\$2,372,399.00)	(\$2,419,847.00)	(\$2,468,244.00)
Estimated TIP Project Expenditures	(\$422,571.00)	(\$430,984.00)	(\$344,823.00)	(\$1,254,000.00)
Amount Available for Local Projects	\$17,181,272.00	\$18,501,735.00	\$18,540,271.00	\$17,582,874.00

Continued on next page...

<b>Table G.9 Revenue</b>	<b>FY 2015</b>	<b>FY 2016</b>	<b>FY 2017</b>	<b>FY 2018</b>
<b>City of Strafford</b>				
Total Available Revenue	\$100,297.00	\$100,297.00	\$100,297.00	\$100,297.00
Estimated Operations and Maintenance Expenditures	\$0.00	\$0.00	\$0.00	\$0.00
Estimated TIP Project Expenditures	\$0.00	\$0.00	\$0.00	\$0.00
Amount Available for Local Projects	\$100,297.00	\$100,297.00	\$100,297.00	\$100,297.00
<b>City of Willard</b>				
Total Available Revenue	\$467,355.00	\$467,355.00	\$467,355.00	\$467,355.00
Estimated Operations and Maintenance Expenditures	(\$13,948.00)	(\$14,227.00)	(\$14,512.00)	(\$14,802.00)
Estimated TIP Project Expenditures	(\$10,000.00)	\$0.00	\$0.00	\$0.00
Amount Available for Local Projects	\$443,407.00	\$453,128.00	\$452,843.00	\$452,553.00
<b>Christian County</b>				
Total Available Revenue	\$1,541,779.00	\$1,541,779.00	\$1,541,779.00	\$1,541,779.00
Estimated Operations and Maintenance Expenditures	(\$40,163.00)	(\$40,966.00)	(\$41,785.00)	(\$42,621.00)
Estimated TIP Project Expenditures	(\$1,557,044.00)	\$0.00	\$0.00	\$0.00
Amount Available for Local Projects	\$1,501,616.00	\$1,500,813.00	\$1,499,994.00	\$1,499,158.00
<b>Greene County</b>				
Total Available Revenue	\$21,647,886.00	\$21,647,886.00	\$21,647,886.00	\$21,647,886.00
Estimated Operations and Maintenance Expenditures	(\$106,796.00)	(\$108,932.00)	(\$111,111.00)	(\$113,333.00)
Estimated TIP Project Expenditures	(\$616,200.00)	(\$80,000)	\$0.00	\$0.00
Amount Available for Local Projects	\$20,924,890.00	\$21,458,954.00	\$21,536,775.00	\$21,534,553.00



### F) Transit Section

**TIP # CU1506** PARATRANSIT BUS REPLACEMENT

**Route** N/A

**From** N/A

**To** N/A

**Location/Agency** City Utilities

**Federal Agency** FTA

**Responsible Agency** City Utilities

**Federal Funding Category** 5339

**MoDOT Funding Category** N/A

**AC Year of Conv.**

**STIP #**



#### Project Description

Purchase of two (2) paratransit buses to replace two existing paratransit buses for complementary paratransit service.

Fund Code	Source	Phase	FY2015	FY2016	FY2017	FY2018	Total
FTA (5339)	Federal	CAPITAL	\$262,372	\$0	\$0	\$0	\$262,372
LOCAL	Local	CAPITAL	\$46,301	\$0	\$0	\$0	\$46,301
<b>Totals</b>			<b>\$308,673</b>	<b>\$0</b>	<b>\$0</b>	<b>\$0</b>	<b>\$308,673</b>

#### Notes

Federal funding is estimated and will be revised to reflect total FY 2015 funding available once the full FY 2015 apportionment is available. Source of Local Funds: CU Farebox Revenue and Ratepayers.

<b>Prior Cost</b>	\$0
<b>Future Cost</b>	\$0
<b>Total Cost</b>	\$308,673



## Transportation Improvement Program - FY 2015-2018

Project Detail by Section and Project Number with Map

### F) Transit Section

**TIP # CU1514** FTA 5310 NEW FREEDOM-TYPE PROJECTS

**Route**

**From** N/A

**To** N/A

**Location/Agency** City Utilities

**Federal Agency** FTA

**Responsible Agency** City Utilities

**Federal Funding Category** 5310

**MoDOT Funding Category**

**AC Year of Conv.**

**STIP #**



**Project Description**

New service or capital projects beyond the Americans with Disabilities Act (ADA) for CU's transit service.

Fund Code	Source	Phase	FY2015	FY2016	FY2017	FY2018	Total
FTA (5310)	Federal	CAPITAL	\$177,343	\$0	\$0	\$0	\$177,343
LOCAL	Local	CAPITAL	\$44,336	\$0	\$0	\$0	\$44,336
<b>Totals</b>			<b>\$221,679</b>	<b>\$0</b>	<b>\$0</b>	<b>\$0</b>	<b>\$221,679</b>

**Notes**

The new MAP-21 grant funding has combined New Freedom projects with Section 5310 funding.

<b>Prior Cost</b>	\$0
<b>Future Cost</b>	\$0
<b>Total Cost</b>	\$221,679



## Transportation Improvement Program - FY 2015-2018

Project Detail by Section and Project Number with Map

### F) Transit Section

TIP # CU1517 CU 5310 ADMINISTRATION

Route

From

To

Location/Agency City Utilities

Federal Agency FTA

Responsible Agency City Utilities

Federal Funding Category 5310

MoDOT Funding Category N/A

AC Year of Conv.

STIP #



#### Project Description

Administration of the City Utilities portion of FY 2013 and 2014 FTA 5310 funding.

Fund Code	Source	Phase	FY2015	FY2016	FY2017	FY2018	Total
FTA (5310)	Federal	ADMIN	\$19,705	\$0	\$0	\$0	\$19,705
<b>Totals</b>			<b>\$19,705</b>	<b>\$0</b>	<b>\$0</b>	<b>\$0</b>	<b>\$19,705</b>

#### Notes

Prior Cost	\$0
Future Cost	\$0
Total Cost	\$19,705





## Transportation Improvement Program - FY 2015-2018

Project Detail by Section and Project Number with Map

### F) Transit Section

**TIP #** MO1506      FTA 5310 HUMAN AGENCY CAPITAL PURCHASES

**Route**

**From**

**To**

**Location/Agency**      Area Wide

**Federal Agency**      FTA

**Responsible Agency**      MoDOT

**Federal Funding Category** 5310

**MoDOT Funding Category** N/A

**AC Year of Conv.**

**STIP #**



#### Project Description

Enhanced Mobility of Seniors and Individuals with Disabilities 5310 Program Capital Purchases for Human Service Agencies.

Fund Code	Source	Phase	FY2015	FY2016	FY2017	FY2018	Total
FTA (5310)	Federal	CAPITAL	\$278,681	\$0	\$0	\$0	\$278,681
LOCAL	Local	CAPITAL	\$69,670	\$0	\$0	\$0	\$69,670
<b>Totals</b>			<b>\$348,351</b>	<b>\$0</b>	<b>\$0</b>	<b>\$0</b>	<b>\$348,351</b>

#### Notes

Minimum 55% allocation of FY 2013 and FY 2014 FTA 5310 funding for Human Service Agencies. Source of Local Funding: Human Service Agency applicants.

<b>Prior Cost</b>	\$0
<b>Future Cost</b>	\$0
<b>Total Cost</b>	\$348,351



## Transportation Improvement Program - FY 2015-2018

Project Detail by Section and Project Number with Map

### F) Transit Section

TIP # **MO1507** MODOT 5310 ADMIN

Route

From

To

Location/Agency Area Wide

Federal Agency FTA

Responsible Agency MoDOT

Federal Funding Category 5310

MoDOT Funding Category N/A

AC Year of Conv.

STIP #



#### Project Description

MoDOT Administration portion of FY 2013 and FY 2014 FTA 5310 funding.

Fund Code	Source	Phase	FY2015	FY2016	FY2017	FY2018	Total
FTA (5310)	Federal	ADMIN	\$30,965	\$0	\$0	\$0	\$30,965
<b>Totals</b>			<b>\$30,965</b>	<b>\$0</b>	<b>\$0</b>	<b>\$0</b>	<b>\$30,965</b>

#### Notes

Prior Cost	\$0
Future Cost	\$0
Total Cost	\$30,965

## FINANCIAL SUMMARY

### Transit

#### YEARLY SUMMARY

	Federal				Local	State	
PROJECT	FTA (5309)	FTA (5307)	FTA (5310)	FTA (5339)	LOCAL	MoDOT	TOTAL
FY 2015							
CU0718	\$2,291,148	\$0	\$0	\$262,372	\$2,151,079	\$0	\$4,704,599
CU1500	\$0	\$1,600,000	\$0	\$0	\$5,800,000	\$30,000	\$7,430,000
CU1501	\$0	\$426,000	\$0	\$0	\$106,500	\$0	\$532,500
CU1502	\$0	\$251,000	\$0	\$0	\$62,750	\$0	\$313,750
CU1503	\$0	\$26,000	\$0	\$0	\$6,500	\$0	\$32,500
CU1504	\$0	\$160,000	\$0	\$0	\$40,000	\$0	\$200,000
CU1505	\$0	\$26,000	\$0	\$0	\$6,500	\$0	\$32,500
CU1506	\$0	\$0	\$0	\$262,372	\$46,301	\$0	\$308,673
CU1514	\$0	\$0	\$177,343	\$0	\$44,336	\$0	\$221,679
CU1517	\$0	\$0	\$19,705	\$0	\$0	\$0	\$19,705
MO1506	\$0	\$0	\$278,681	\$0	\$69,670	\$0	\$348,351
MO1507	\$0	\$0	\$30,965	\$0	\$0	\$0	\$30,965
SUBTOTAL	\$2,291,148	\$2,489,000	\$506,694	\$524,744	\$8,333,636	\$30,000	\$14,175,222
GRAND TOTAL	\$2,291,148	\$2,489,000	\$506,694	\$524,744	\$8,333,636	\$30,000	\$14,175,222

## FINANCIAL CONSTRAINT

### Transit

	Federal Funding Source				MoDOT	Local	TOTAL
	5309	5307	5310	5339			
PRIOR YEAR							
Balance	\$2,291,148	\$ -	\$ 506,694	\$ -	\$ -	\$ -	\$2,797,842
FY 2015							
Funds Anticipated	\$ -	\$ 2,489,000	\$ -	\$ 524,744	\$ 30,000	\$ 8,333,636	\$11,377,380
Funds Programmed	(\$2,291,148)	(\$2,489,000)	(\$506,694)	(\$524,744)	(\$30,000)	(\$8,333,636)	(\$14,175,222)
Running Balance	\$0	\$0	\$0	\$0	\$0	\$0	\$0
FY 2016							
Funds Anticipated	\$ -	\$ 2,600,000	\$ -	\$ 262,372	\$ 30,000	\$ 8,900,000	\$11,792,372
Funds Programmed	\$ -	\$ -	\$ -	\$ -	\$ -	\$ -	\$0
Running Balance	\$0	\$2,600,000	\$0	\$262,372	\$30,000	\$8,900,000	\$11,792,372
FY 2017							
Funds Anticipated	\$ -	\$ 2,700,000	\$ -	\$ 262,372	\$ 30,000	\$ 9,186,000	\$12,178,372
Funds Programmed	\$ -	\$ -	\$ -	\$ -	\$ -	\$ -	\$0
Running Balance	\$0	\$2,700,000	\$0	\$262,372	\$30,000	\$9,186,000	\$23,970,744
FY 2018							
Funds Anticipated	\$ -	\$ 2,800,000	\$ -	\$ 262,372	\$ 30,000	\$ 9,681,000	\$12,773,372
Funds Programmed	\$ -	\$ -	\$ -	\$ -	\$ -	\$ -	\$0
Running Balance	\$0	\$2,800,000	\$0	\$262,372	\$30,000	\$9,681,000	\$36,744,116

## Natasha Longpine

---

**From:** Comment  
**Sent:** Tuesday, December 09, 2014 7:51 AM  
**To:** Sara Fields; Natasha Longpine  
**Subject:** FW: Kansas extension/Riverbluff Rd

New public comment came in last night concerning the Kansas extension.

Joshua.

-----Original Message-----

From: Jennifer Patterson [mailto:jlpatrick2002@gmail.com]  
Sent: Monday, December 08, 2014 5:13 PM  
To: Comment  
Subject: Kansas extension/Riverbluff Rd

I have previously commented and expressed concern about this project. I understand the need for traffic control in south Springfield, however destroying the small green space that is left in this area should not be an option. I would like to see the Watershed Committee, Missouri Department of Conservation and other environmentally conscience entities to be involved in these decisions.

In addition, there is a cave within a few hundred feet to the south of Plainview Road along the Greenway Trail that is in the path of the proposed project. I would like to see this cave investigated for fossils/artifacts or endangered species, as I suspect the county will find it is part of the protected Riverbluff Cave system.

Why would Campbell not be expanded to three lanes all the way to Nixa? Or Cox Road expanded/ improved as a route considering it does travel to Nixa as well? Rather than destroy the beautiful wooded area that serves as a refuge for many types of wildlife in the area, shouldn't the improvement of these roads be considered and the allocated money used here instead?

Jennifer Patterson  
417-234-3466