



**U.S. Department of Transportation**

**Federal Transit Administration**  
901 Locust, Room 404  
Kansas City, MO 64106  
816-329-3920  
816-329-3921 (fax)

**Federal Highway Administration**  
3220 W. Edgewood, Suite H  
Jefferson City, MO 65109  
573-636-7104  
573-636-9283 (fax)

December 27, 2017

Mr. Patrick McKenna, Director  
Missouri Department of Transportation  
P.O. Box 270  
Jefferson City, Missouri 65102

Re: FHWA Approval of "Highway Only" Amendment to the  
Missouri FY 2018-2022 STIP to incorporate the Ozarks  
Transportation Organization (OTO) FY 2018-2021 Transportation  
Improvement Program (TIP) Amendment #2

Dear Mr. McKenna:

The Federal Highway Administration (FHWA) has reviewed the requested highway only amendment to the FY 2018-2022 Missouri State Transportation Improvement Program (STIP) to incorporate the Ozarks Transportation Organization's (OTO) modification of their FY 2018- 2021 Transportation Improvement Program (TIP), as further described in your letter of December 26, 2017. The TIP amendment is for the addition of four new MoDOT scoping and design projects, one new local public agency scoping and design project, and the modification of one currently programmed local public agency roadway project.

The OTO Board of Directors approved the TIP amendment on December 14, 2017. The Missouri governor approved the OTO FY2018-2021 TIP amendment on December 22, 2017.

In accordance with 23 CFR 450.218(b), we have determined that this STIP amendment is based on a transportation planning process that substantially meets the requirements of 23 U.S.C 134 and 135, 49 U.S.C. 5303 and 5304 and 23 CFR 450 Subparts A, B, and C. Based on our review, this STIP amendment request is approved.

If you have any questions, please contact Brad McMahon at FHWA (573) 638-2609.

Sincerely,

For: Kevin W. Ward, P.E.  
Division Administrator  
Federal Highway Administration

cc: Sara Edwards, OTO  
Machelle Watkins, MoDOT  
Eva Voss, MoDOT  
Frank Miller, MoDOT Southwest District  
Sharon Monroe, MoDOT  
Jeremiah Shuler, FTA Region 7  
Jerica Holtsclaw, MoDOT

**Missouri Department of Transportation**  
*Patrick K. McKenna, Director*

1.888.ASK MODOT (275.6636)

December 26, 2017

Mr. Kevin Ward  
Division Administrator  
Federal Highway Administration  
3220 West Edgewood, Suite H  
Jefferson City, MO 65109

Dear Mr. Ward:

SUBJECT: Springfield Metropolitan Area  
Ozarks Transportation Organization (OTO)  
FY 2018-2021 Transportation Improvement Program (TIP)  
Approval Request to Incorporate OTO TIP Amendment #2 into FY18-22 STIP

As required by the Fixing America's Surface Transportation (FAST) Act, MoDOT received approval from Governor Greitens for TIP Amendment Number Two for the Springfield metropolitan area. The TIP amendment covers four new MoDOT projects, one modified local sponsored project and one new local sponsored project.

Enclosed is a copy of the Governor's approval letter and supporting documentation. The OTO Board of Directors approved the TIP amendment on December 14, 2017. All public involvement considerations were met and fiscal constraint has been ensured.

We request approval of incorporating this TIP amendment into the FY 2018-2022 State Transportation Improvement Program (STIP) at your earliest convenience.

Sincerely,



Eva Voss  
Transportation Planning Specialist

Enclosure

Copies: Brad McMahon-FHWA  
Sara Fields-OTO  
Natasha Longpine-OTO  
Frank Miller-MoDOT



*Our mission is to provide a world-class transportation experience that delights our customers and promotes a prosperous Missouri.*

[www.modot.org](http://www.modot.org)



105 West Capitol Avenue  
P.O. Box 270  
Jefferson City, Missouri 65102

**Missouri Department of Transportation**  
*Patrick K. McKenna, Director*

1.888.ASK MODOT (275.6636)

December 20, 2017

The Honorable Eric R. Greitens  
Governor of Missouri  
State Capitol  
Jefferson City, MO 65101

Dear Governor Greitens:

On December 14, 2017, the Ozarks Transportation Organization (OTO) Board of Directors approved an amendment to the FY 2018-2021 Transportation Improvement Plan (TIP) for the Springfield, Missouri, metropolitan area. The TIP amendment covers four new MoDOT projects, one modified local sponsored project and one new local sponsored project. MoDOT is satisfied the federal requirements have been met in the development of this TIP amendment, including the opportunity for the public to comment on this project. No comments were received.

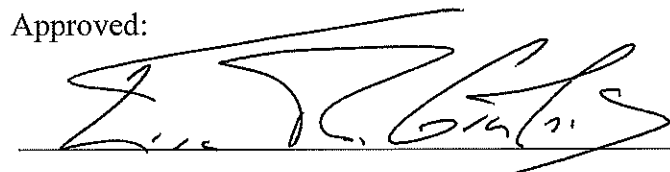
Enclosed is a copy of the TIP amendment for your review. We request approval of this action at your earliest convenience, so project authorization can proceed in the Springfield metropolitan area.

Sincerely,

  
Patrick K. McKenna  
Director

ev  
Enclosure

Approved:

 Date: December 22, 2017  
Title: Governor of Missouri



*Our mission is to provide a world-class transportation experience that delights our customers and promotes a prosperous Missouri.*

[www.modot.org](http://www.modot.org)

USE OF REMAINING STIP FUNDS - ARE WE FISCALLY CONSTRAINED?																							
	Starting Balance		7	8,041	73,111	115,450	157,518	177,837	531,964	60	61,671	6,702	243,301	90,190	213,785	615,709	100	-13,431	10,055	45,671	48,295	48,200	138,890
	\$ in Thousands																	(-) = Excess					
	Inflated			CHANGE IN						CHANGE IN								CHANGE IN					
				Engineering - Internal & DBC Only - STIP funds						Right of Way & Construction & Payments - STIP funds							FFOS						
District	Admin Mods		2017	2018	2019	2020	2021	2022	Sum	2017	2018	2019	2020	2021	2022	Sum	2017	2018	2019	2020	2021	2022	Sum
None	Rural	None							0							0							0
None	MPO	None							0							0							0
District	Admin Amends																						
NW	Rural	1P3077		26	148				174							0							0
NW	Rural	2P0470		-5	149				144							0							0
NW	Rural	1S3243		50	125				175							0							0
CD	Rural	5S3187							0							0							0
SW	Rural	7S3345		3	3				6							0							0
SE	Rural	9S3266							0							0							0
NW	MPO	1I3053		90	595	300			985							0							0
KC	MPO	4S3205		40	234				274							0							0
KC	MPO	4I3219		48	278	18			344							0							0
KC	MPO	4I3217		48	278	18			344							0							0
KC	MPO	4P3015		140	710	-217	-180		453							0							0
KC	MPO	4S3218		48	528	-174			402							0							0
KC	MPO	4I3197		-25	350	-163			162							0							0
SL	MPO	6S3374		125	5				130							0							0
SW	MPO	8P3087B		100	96	20			216							0							0
SW	MPO	8P3087E		75	84	10			169							0							0
SW	MPO	8P3087F		100	100	25			225							0							0
SW	MPO	8P3087D		75	75	24			174							0							0
SW	MPO	8P3087C		5	5				10							0							0
District	Amendments																						
None	Rural	None							0							0							0
None	MPO	None							0							0							0
								4,387	check							0	check					check	0
		Sum	0	943	3,763	-139	-180	0	4,387	0	0	0	0	0	0	0	0	0	0	0	0	0	0
	Remaining Balance		7	7,098	69,348	115,589	157,698	177,837	527,577	60	61,671	6,702	243,301	90,190	213,785	615,709	100	-13,431	10,055	45,671	48,295	48,200	138,890
								527,577	check														
	Revisions This Month		19						Sum	0	0	0	0	0	0	0							
	Previous Total		188						FFOS	0	0	0	0	0	0	0							
	SFY Cumulative		207													615,709	check						
								Remaining Balance	60	61,671	6,702	243,301	90,190	213,785	615,709								
								Net	0	61,731	6,702	243,301	90,190	213,785									
									check	ok	ok	ok	ok	ok									

District	Admin Mods		2017	2018	2019	2020	2021	2022	Sum	2017	2018	2019	2020	2021	2022	Sum	2017	2018	2019	2020	2021	2022	Sum
None	Rural	None							0							0							0
	Rural Amendments		0	0	0	0	0	0	0	0	0	0	0	0	0	0	0	0	0	0	0	0	0
	MPO Amendments		0	0	0	0	0	0	0	0	0	0	0	0	0	0	0	0	0	0	0	0	0
	Sum Amendments		0	0	0	0	0	0	0	0	0	0	0	0	0	0	0	0	0	0	0	0	0
	Rural Ad Amends		0	74	425	0	0	0	499	0	0	0	0	0	0	0	0	0	0	0	0	0	0
	MPO Ad Amends		0	869	3,338	-139	-180	0	3,888	0	0	0	0	0	0	0	0	0	0	0	0	0	0
	Rural Ad Mods		0	0	0	0	0	0	0	0	0	0	0	0	0	0	0	0	0	0	0	0	0
	MPO Ad Mods		0	0	0	0	0	0	0	0	0	0	0	0	0	0	0	0	0	0	0	0	0
	Amend+ AA + AM		0	943	3,763	-139	-180	0	4,387	0	0	0	0	0	0	0	0	0	0	0	0	0	0



OZARKS TRANSPORTATION ORGANIZATION  
A METROPOLITAN PLANNING ORGANIZATION

205 PARK CENTRAL EAST, SUITE 205 SPRINGFIELD, MO 65806 417-865-3042 [p] 417-862-6013 [f]

18 December 2017

Ms. Eva Voss  
Transportation Planning  
Missouri Department of Transportation  
P. O. Box 270  
Jefferson City, Missouri 65102

Dear Ms. Voss:

We respectfully request the approval of the FY 2018-2021 Ozarks Transportation Organization Transportation Improvement Program (TIP) Amendment Number Two. The Board of Directors adopted this amendment on December 14, 2017. The adoption included demonstration of fiscal constraint as required by federal regulations. Public comment was taken in accordance with federal law and in accordance with the OTO Public Involvement Policy and no public comment was received. This amendment includes six changes that are outlined on the following page.

Please find enclosed the requested TIP amendment. Please let me know if you need any other information.

Sincerely,

Natasha L. Longpine, AICP  
Principal Planner

Enclosure: TIP Approval Packet



OZARKSTRANSPORTATION.ORG

## **Amendment Number Two to the FY 2018-2021 Transportation Improvement Program**

### **Ozarks Transportation Organization (Springfield, MO Area MPO)**

#### **DESCRIPTION:**

Six changes are proposed for Amendment Number Two to the FY 2018-2021 Transportation Improvement Program.

1. **\*Revised\*** Bridge Replacement, Bridge #1670228 (GR11601-18A2)  
Moving the project forward from 2017 to 2018 with the same programmed amount of \$400,000.
2. **\*New\*** Route 160 and South Street (NX1803-18A2)  
Adding scoping for intersection improvements at Route 160 and South Street for a total programmed amount of \$216,000.
3. **\*New\*** Kearney and West Bypass (SP1815-18A2)  
Adding scoping for intersection improvements at West Bypass and Kearney Street for a total programmed amount of \$174,000.
4. **\*New\*** Kansas Expressway and Sunset Street (SP1816-18A2)  
Adding scoping for intersection improvements on Kansas Expressway at Sunset Street for a total programmed amount of \$169,000.
5. **\*New\*** Kansas Expressway and Walnut Lawn (SP1817-18A2)  
Adding scoping for intersection improvements on Kansas Expressway at Walnut Lawn for a total programmed amount of \$225,000.
6. **\*New\*** Campbell and Republic Road Intersection (SP1818-18A2)  
Adding a project for review of design for intersection improvements for a total programmed amount of \$10,000.

#### **TECHNICAL PLANNING COMMITTEE ACTION TAKEN:**

At its regularly scheduled meeting on November 15, 2017, the Technical Planning Committee unanimously voted to recommend approval of FY 2018-2021 Transportation Improvement Program Amendment Number Two to the Board of Directors.

#### **BOARD OF DIRECTORS ACTION TAKEN:**

At its meeting scheduled on December 14, 2017, the Board of Directors unanimously voted to approve FY 2018-2021 Transportation Improvement Program Amendment Number Two.



## Transportation Improvement Program - FY 2018-2021

Project Detail by Section and Project Number with Map

### J) Pending Amendment Section

**TIP # GR1601-18A2** BRIDGE REPLACEMENT, BRIDGE #1670228

**Route** Farm Road 167

**From** Farm Road 167

**To** Farm Road 167

**Location** Greene County

**Federal Agency** FHWA

**Project Sponsor** Greene County

**Federal Funding Category** BRO

**MoDOT Funding Category** N/A

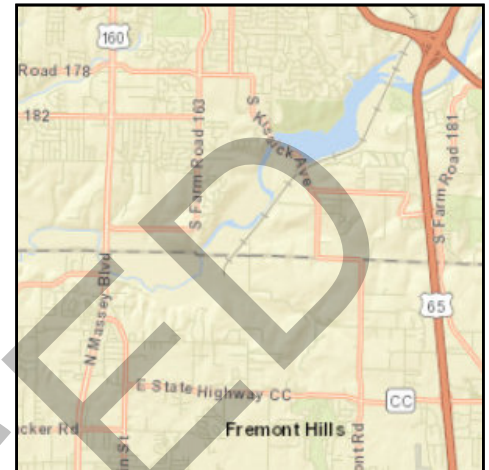
**Bike/Ped Plan?** EJ? Yes

**STIP #** 1670228

**Federal ID #** B039036

#### Project Description

Replace existing bridge and upgrade approaches.



Fund Code	Source	Phase	FY2018	FY2019	FY2020	FY2021	Total
FHWA (BRO)	Federal	CON	\$320,000	\$0	\$0	\$0	\$320,000
LOCAL	Local	CON	\$80,000	\$0	\$0	\$0	\$80,000
<b>Totals</b>			<b>\$400,000</b>	<b>\$0</b>	<b>\$0</b>	<b>\$0</b>	<b>\$400,000</b>

#### Notes

Source of Local Funds: Greene County Road and Bridge Fund.

<b>Prior Cost</b>	\$0
<b>Future Cost</b>	\$0
<b>Total Cost</b>	\$400,000



# Transportation Improvement Program - FY 2017-2020

Project Detail by Section and Project Number with Map

## E) Roadways Section

**TIP # GR1601** BRIDGE REPLACEMENT, BRIDGE #1670228

**Route** Farm Road 167

**From** Farm Road 167

**To** Farm Road 167

**Location/Agency** Greene County

**Federal Agency** FHWA

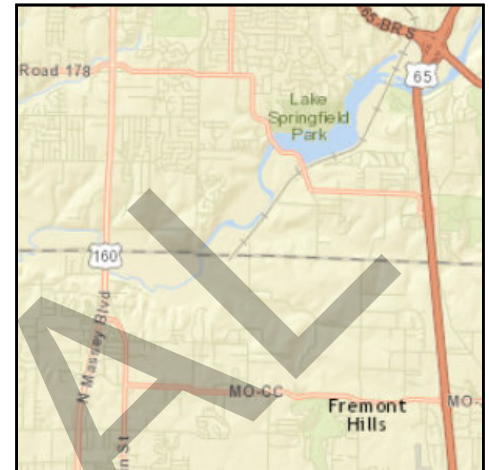
**Responsible Agency** Greene County

**Federal Funding Category** BRO

**MoDOT Funding Category** N/A

**AC Year of Conv.**

**STIP #**



### Project Description

Replace existing bridge and upgrade approaches.

Fund Code	Source	Phase	FY2017	FY2018	FY2019	FY2020	Total
FHWA (BRO)	Federal	CON	\$320,000	\$0	\$0	\$0	\$320,000
LOCAL	Local	CON	\$80,000	\$0	\$0	\$0	\$80,000
<b>Totals</b>			<b>\$400,000</b>	<b>\$0</b>	<b>\$0</b>	<b>\$0</b>	<b>\$400,000</b>

### Notes

Source of Local Funds: Greene County Road and Bridge Fund.

<b>Prior Cost</b>	\$0
<b>Future Cost</b>	\$0
<b>Total Cost</b>	\$400,000

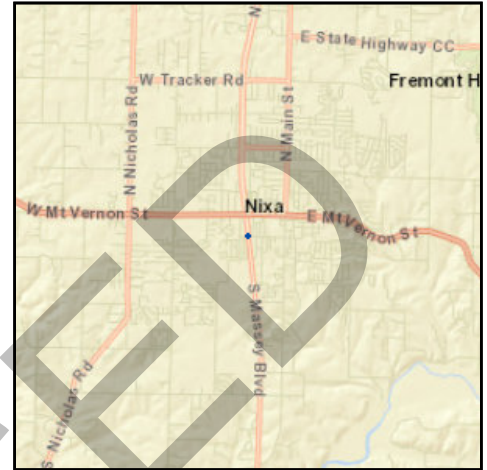


# Transportation Improvement Program - FY 2018-2021

Project Detail by Section and Project Number with Map

## J) Pending Amendment Section

**TIP #** NX1803-18A2      **ROUTE 160 AND SOUTH STREET**  
**Route** 160  
**From** Route 160  
**To** South Street  
**Location** City of Nixa  
**Federal Agency** FHWA  
**Project Sponsor** MoDOT  
**Federal Funding Category** NHPP  
**MoDOT Funding Category** Major Projects and Emerging Needs  
**Bike/Ped Plan?** Yes      **EJ?** Yes  
**STIP #** 8P3087B  
**Federal ID #**



### Project Description

Scoping for intersection improvements on Massey Boulevard (Route 160) and South Street in Nixa.

Fund Code	Source	Phase	FY2018	FY2019	FY2020	FY2021	Total
FHWA (NHPP)	Federal	ENG	\$80,000	\$76,800	\$16,000	\$0	\$172,800
LOCAL	Local	ENG	\$0	\$19,200	\$0	\$0	\$19,200
MoDOT	State	ENG	\$20,000	\$0	\$4,000	\$0	\$24,000
<b>Totals</b>			<b>\$100,000</b>	<b>\$96,000</b>	<b>\$20,000</b>	<b>\$0</b>	<b>\$216,000</b>

### Notes

Non-Federal Funding Source: State Transportation Revenues

<b>Prior Cost</b>	\$0
<b>Future Cost</b>	\$0
<b>Total Cost</b>	\$216,000



# Transportation Improvement Program - FY 2018-2021

Project Detail by Section and Project Number with Map

## J) Pending Amendment Section

**TIP #** SP1815-18A2      **KEARNEY AND WEST BYPASS**  
**Route** US 160  
**From** US 160  
**To** MO 744  
**Location** City of Springfield  
**Federal Agency** FHWA  
**Project Sponsor** MoDOT  
**Federal Funding Category** NHPP  
**MoDOT Funding Category** Major Projects and Emerging Needs  
**Bike/Ped Plan?** Yes      **EJ?** Yes  
**STIP #** 8P3087D  
**Federal ID #**



### Project Description

Scoping for intersection improvements at West Bypass (Route 160) and Kearney Street (Route 744) in Springfield.

Fund Code	Source	Phase	FY2018	FY2019	FY2020	FY2021	Total
FHWA (NHPP)	Federal	ENG	\$60,000	\$60,000	\$19,200	\$0	\$139,200
LOCAL	Local	ENG	\$15,000	\$0	\$0	\$0	\$15,000
MoDOT	State	ENG	\$0	\$15,000	\$4,800	\$0	\$19,800
<b>Totals</b>			<b>\$75,000</b>	<b>\$75,000</b>	<b>\$24,000</b>	<b>\$0</b>	<b>\$174,000</b>

### Notes

Non-Federal Funding Source: State Transportation Revenues

<b>Prior Cost</b>	\$0
<b>Future Cost</b>	\$0
<b>Total Cost</b>	\$174,000



## Transportation Improvement Program - FY 2018-2021

Project Detail by Section and Project Number with Map

### J) Pending Amendment Section

**TIP #** SP1816-18A2 **KANSAS EXPRESSWAY AND SUNSET STREET**

**Route** MO 13

**From** MO 13

**To** Sunset Street

**Location** City of Springfield

**Federal Agency** FHWA

**Project Sponsor** MoDOT

**Federal Funding Category** NHPP

**MoDOT Funding Category** Major Projects and Emerging Needs

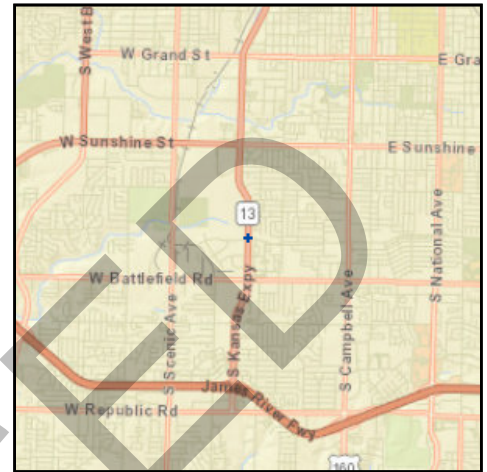
**Bike/Ped Plan?** Yes **EJ?** Yes

**STIP #** 8P3087E

**Federal ID #**

#### Project Description

Scoping for intersection improvements on Kansas Expressway (Route 13) at Sunset Street in Springfield.



Fund Code	Source	Phase	FY2018	FY2019	FY2020	FY2021	Total
FHWA (NHPP)	Federal	ENG	\$60,000	\$67,200	\$8,000	\$0	\$135,200
MoDOT	State	ENG	\$15,000	\$16,800	\$2,000	\$0	\$33,800
<b>Totals</b>			<b>\$75,000</b>	<b>\$84,000</b>	<b>\$10,000</b>	<b>\$0</b>	<b>\$169,000</b>

#### Notes

Non-Federal Funding Source: State Transportation Revenues

<b>Prior Cost</b>	\$0
<b>Future Cost</b>	\$0
<b>Total Cost</b>	\$169,000



## Transportation Improvement Program - FY 2018-2021

Project Detail by Section and Project Number with Map

### J) Pending Amendment Section

**TIP #** SP1817-18A2 **KANSAS EXPRESSWAY AND WALNUT LAWN**

**Route** MO 13

**From** MO 13

**To** Walnut Lawn Street

**Location** City of Springfield

**Federal Agency** FHWA

**Project Sponsor** MoDOT

**Federal Funding Category** NHPP

**MoDOT Funding Category** Major Projects and Emerging Needs

**Bike/Ped Plan?** Yes **EJ?** Yes

**STIP #** 8P3087F

**Federal ID #**

#### Project Description

Scoping for intersection improvements on Kansas Expressway (Route 13) at Walnut Lawn Street in Springfield.



Fund Code	Source	Phase	FY2018	FY2019	FY2020	FY2021	Total
FHWA (NHPP)	Federal	ENG	\$80,000	\$80,000	\$20,000	\$0	\$180,000
MoDOT	State	ENG	\$20,000	\$20,000	\$5,000	\$0	\$45,000
<b>Totals</b>			<b>\$100,000</b>	<b>\$100,000</b>	<b>\$25,000</b>	<b>\$0</b>	<b>\$225,000</b>

#### Notes

Non-Federal Funding Source: State Transportation Revenues

<b>Prior Cost</b>	\$0
<b>Future Cost</b>	\$0
<b>Total Cost</b>	\$225,000



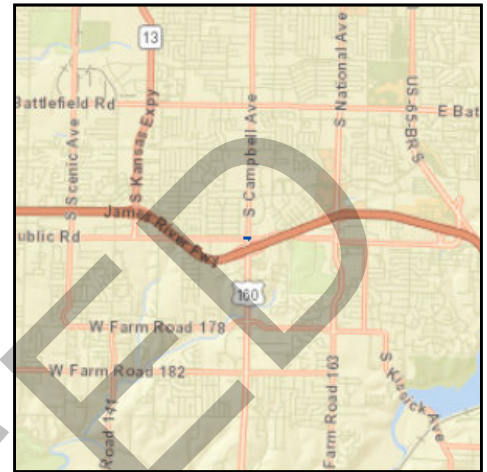
# Transportation Improvement Program - FY 2018-2021

Project Detail by Section and Project Number with Map

## J) Pending Amendment Section

**TIP #** SP1818-18A2 **CAMPBELL AND REPUBLIC ROAD INTERSECTION**

**Route** Campbell Avenue  
**From** Campbell Avenue  
**To** Republic Road  
**Location** City of Springfield  
**Federal Agency** FHWA  
**Project Sponsor** City of Springfield  
**Federal Funding Category** NHPP  
**MoDOT Funding Category** Major Projects and Emerging Needs  
**Bike/Ped Plan?** Yes **EJ?** Yes  
**STIP #** 8P3087C  
**Federal ID #**



**Project Description**  
 Review of design for intersection improvements.

Fund Code	Source	Phase	FY2018	FY2019	FY2020	FY2021	Total
FHWA (NHPP)	Federal	ENG	\$4,000	\$4,000	\$0	\$0	\$8,000
MoDOT	State	ENG	\$1,000	\$1,000	\$0	\$0	\$2,000
<b>Totals</b>			<b>\$5,000</b>	<b>\$5,000</b>	<b>\$0</b>	<b>\$0</b>	<b>\$10,000</b>

### Notes

Non-Federal Funding Source: State Transportation Revenues

<b>Prior Cost</b>	\$0
<b>Future Cost</b>	\$0
<b>Total Cost</b>	\$10,000

# FINANCIAL SUMMARY

## Roadways

### YEARLY SUMMARY

	Federal												Local	State				
PROJECT	FHWA (STBG-U)	FHWA (SAFETY)	FHWA (BRIDGE)	FHWA (STBG)	FHWA (VM)	FHWA (130)	FHWA (NHS)	FHWA (BRM)	FHWA (BRO)	FHWA (NHPP)	FHWA (HPP)	FEMA	LOCAL	MoDOT	MoDOT-GCSA	MoDOT-AC	SEMA	TOTAL
2018																		
BA1801-18	\$0	\$0	\$0	\$0	\$0	\$0	\$0	\$0	\$0	\$1,600	\$0	\$0	\$0	\$400	\$0	\$0	\$0	\$2,000
CC0901	\$0	\$0	\$0	\$1,600	\$0	\$0	\$0	\$0	\$0	\$0	\$0	\$0	\$0	\$400	\$0	\$0	\$0	\$2,000
CC1102	\$0	\$0	\$0	\$0	\$0	\$0	\$0	\$0	\$0	\$1,680,000	\$0	\$0	\$0	\$420,000	\$0	\$0	\$0	\$2,100,000
CC1601	\$0	\$900	\$0	\$0	\$0	\$0	\$0	\$0	\$0	\$0	\$0	\$0	\$0	\$100	\$0	\$0	\$0	\$1,000
CC1701	\$0	\$0	\$0	\$457,600	\$0	\$0	\$0	\$0	\$0	\$0	\$0	\$0	\$0	\$114,400	\$0	\$0	\$0	\$572,000
CC1702	\$0	\$196,000	\$0	\$584,000	\$0	\$0	\$0	\$0	\$0	\$0	\$0	\$0	\$0	\$195,000	\$0	\$0	\$0	\$975,000
CC1703	\$0	\$0	\$0	\$4,000	\$0	\$0	\$0	\$0	\$0	\$0	\$0	\$0	\$0	\$1,000	\$0	\$0	\$0	\$5,000
CC1801	\$0	\$0	\$0	\$19,200	\$0	\$0	\$0	\$0	\$0	\$0	\$0	\$0	\$0	\$4,800	\$0	\$0	\$0	\$24,000
CC1802	\$0	\$0	\$0	\$0	\$0	\$0	\$0	\$0	\$0	\$80,000	\$0	\$0	\$0	\$20,000	\$0	\$0	\$0	\$100,000
CC1803-18	\$0	\$72,000	\$0	\$0	\$0	\$0	\$0	\$0	\$0	\$0	\$0	\$0	\$0	\$8,000	\$0	\$0	\$0	\$80,000
GR1403-18A1	\$0	\$0	\$0	\$0	\$0	\$0	\$0	\$0	\$0	\$68,000	\$0	\$0	\$0	\$17,000	\$0	\$0	\$0	\$85,000
GR1501	\$180,119	\$0	\$0	\$0	\$0	\$0	\$0	\$0	\$0	\$0	\$0	\$0	\$45,030	\$0	\$0	\$0	\$0	\$225,149
GR1601-18A2	\$0	\$0	\$0	\$0	\$0	\$0	\$0	\$0	\$320,000	\$0	\$0	\$0	\$80,000	\$0	\$0	\$0	\$0	\$400,000
GR1701	\$0	\$0	\$0	\$688,000	\$0	\$0	\$0	\$0	\$0	\$0	\$0	\$0	\$0	\$167,000	\$0	\$0	\$0	\$855,000
GR1703	\$0	\$0	\$0	\$1,600	\$0	\$0	\$0	\$0	\$0	\$0	\$0	\$0	\$0	\$400	\$0	\$0	\$0	\$2,000
GR1704	\$0	\$0	\$0	\$1,600	\$0	\$0	\$0	\$0	\$0	\$0	\$0	\$0	\$0	\$400	\$0	\$0	\$0	\$2,000
GR1705	\$0	\$0	\$0	\$15,200	\$0	\$0	\$0	\$0	\$0	\$0	\$0	\$0	\$0	\$3,800	\$0	\$0	\$0	\$19,000
GR1706	\$0	\$0	\$0	\$415,200	\$0	\$0	\$0	\$0	\$0	\$0	\$0	\$0	\$0	\$103,800	\$0	\$0	\$0	\$519,000
GR1707-17A6	\$0	\$0	\$0	\$0	\$0	\$0	\$0	\$0	\$0	\$0	\$0	\$0	\$51,000	\$0	\$0	\$0	\$0	\$51,000
GR1801-18	\$0	\$22,500	\$0	\$0	\$0	\$0	\$0	\$0	\$0	\$0	\$0	\$0	\$0	\$2,500	\$0	\$0	\$0	\$25,000
GR1802-18	\$0	\$0	\$0	\$84,000	\$0	\$0	\$0	\$0	\$0	\$0	\$0	\$0	\$0	\$21,000	\$0	\$0	\$0	\$105,000
GR1803-18	\$0	\$0	\$0	\$0	\$0	\$0	\$0	\$0	\$0	\$988,800	\$0	\$0	\$0	\$247,200	\$0	\$0	\$0	\$1,236,000
GR1804-18	\$0	\$0	\$0	\$0	\$0	\$0	\$0	\$0	\$0	\$1,600	\$0	\$0	\$0	\$400	\$0	\$0	\$0	\$2,000
GR1805-18	\$0	\$0	\$0	\$800	\$0	\$0	\$0	\$0	\$0	\$0	\$0	\$0	\$0	\$200	\$0	\$0	\$0	\$1,000
MO1105	\$0	\$0	\$0	\$0	\$0	\$0	\$0	\$0	\$0	\$0	\$0	\$0	\$0	\$284,000	\$0	\$0	\$0	\$284,000
MO1616	\$0	\$0	\$0	\$0	\$0	\$0	\$0	\$0	\$0	\$3,036,800	\$0	\$0	\$0	\$759,200	\$0	\$0	\$0	\$3,796,000
MO1705	\$0	\$0	\$0	\$800	\$0	\$0	\$0	\$0	\$0	\$0	\$0	\$0	\$0	\$200	\$0	\$0	\$0	\$1,000
MO1708	\$0	\$162,000	\$0	\$0	\$0	\$0	\$0	\$0	\$0	\$0	\$0	\$0	\$0	\$18,000	\$0	\$0	\$0	\$180,000
MO1709	\$0	\$1,800	\$0	\$0	\$0	\$0	\$0	\$0	\$0	\$0	\$0	\$0	\$0	\$200	\$0	\$0	\$0	\$2,000
MO1710-17A2	\$0	\$0	\$0	\$105,600	\$0	\$0	\$0	\$0	\$0	\$0	\$0	\$0	\$0	\$26,400	\$0	\$0	\$0	\$132,000
MO1711	\$0	\$0	\$0	\$8,000	\$0	\$0	\$0	\$0	\$0	\$0	\$0	\$0	\$0	\$2,000	\$0	\$0	\$0	\$10,000
MO1712	\$0	\$0	\$0	\$0	\$0	\$0	\$0	\$0	\$0	\$1,600	\$0	\$0	\$0	\$400	\$0	\$0	\$0	\$2,000
MO1713	\$0	\$3,116,700	\$0	\$0	\$0	\$0	\$0	\$0	\$0	\$0	\$0	\$0	\$0	\$346,300	\$0	\$0	\$0	\$3,463,000
MO1714	\$0	\$0	\$0	\$0	\$0	\$0	\$0	\$0	\$0	\$1,600	\$0	\$0	\$0	\$400	\$0	\$0	\$0	\$2,000
MO1716	\$315,000	\$0	\$0	\$471,200	\$0	\$0	\$0	\$0	\$0	\$0	\$0	\$0	\$78,750	\$117,800	\$0	\$0	\$0	\$982,750
MO1717	\$0	\$0	\$0	\$800	\$0	\$0	\$0	\$0	\$0	\$0	\$0	\$0	\$0	\$200	\$0	\$0	\$0	\$1,000
MO1719	\$0	\$0	\$0	\$0	\$0	\$0	\$0	\$0	\$0	\$38,400	\$0	\$0	\$0	\$9,600	\$0	\$0	\$0	\$48,000
MO1720	\$0	\$0	\$0	\$0	\$0	\$0	\$0	\$0	\$0	\$4,000	\$0	\$0	\$0	\$1,000	\$0	\$0	\$0	\$5,000
MO1721	\$0	\$27,000	\$0	\$0	\$0	\$0	\$0	\$0	\$0	\$0	\$0	\$0	\$0	\$3,000	\$0	\$0	\$0	\$30,000
MO1722	\$0	\$0	\$0	\$0	\$0	\$0	\$0	\$0	\$0	\$16,800	\$0	\$0	\$0	\$4,200	\$0	\$0	\$0	\$21,000
MO1723	\$0	\$0	\$0	\$3,200	\$0	\$0	\$0	\$0	\$0	\$0	\$0	\$0	\$0	\$800	\$0	\$0	\$0	\$4,000
MO1803-18	\$0	\$900	\$0	\$0	\$0	\$0	\$0	\$0	\$0	\$0	\$0	\$0	\$0	\$100	\$0	\$0	\$0	\$1,000
MO1804-18	\$0	\$0	\$0	\$800	\$0	\$0	\$0	\$0	\$0	\$0	\$0	\$0	\$0	\$200	\$0	\$0	\$0	\$1,000
MO1805-18	\$0	\$0	\$0	\$112,000	\$0	\$0	\$0	\$0	\$0	\$0	\$0	\$0	\$0	\$28,000	\$0	\$0	\$0	\$140,000
MO1806-18	\$0	\$0	\$0	\$72,000	\$0	\$0	\$0	\$0	\$0	\$0	\$0	\$0	\$0	\$18,000	\$0	\$0	\$0	\$90,000
MO1807-18	\$0	\$0	\$0	\$0	\$0	\$0	\$0	\$0	\$0	\$0	\$0	\$0	\$0	\$11,500	\$0	\$103,500	\$0	\$115,000
MO1808-18	\$0	\$0	\$0	\$0	\$0	\$0	\$0	\$0	\$0	\$0	\$0	\$0	\$0	\$21,900	\$0	\$197,100	\$0	\$219,000
NX1701	\$0	\$0	\$0	\$0	\$0	\$0	\$0	\$0	\$0	\$964,000	\$0	\$0	\$0	\$580,000	\$0	\$0	\$0	\$1,544,000
NX1702	\$0	\$0	\$0	\$1,029,600	\$0	\$0	\$0	\$0	\$0	\$0	\$0	\$0	\$0	\$257,400	\$0	\$0	\$0	\$1,287,000
NX1703	\$0	\$0	\$0	\$188,000	\$0	\$0	\$0	\$0	\$0	\$0	\$0	\$0	\$0	\$47,000	\$0	\$0	\$0	\$235,000
NX1704	\$0	\$0	\$0	\$0	\$0	\$0	\$0	\$0	\$0	\$1,600	\$0	\$0	\$0	\$400	\$0	\$0	\$0	\$2,000
NX1705	\$0	\$0	\$0	\$0	\$0	\$0	\$0	\$0	\$0	\$68,800	\$0	\$0	\$0	\$17,200	\$0	\$0	\$0	\$86,000
NX1801-17A2	\$54,400	\$0	\$0	\$0	\$0	\$0	\$0	\$0	\$0	\$37,600	\$0	\$0	\$13,600	\$9,400	\$0	\$0	\$0	\$115,000
NX1803-18A2	\$0	\$0	\$0	\$0	\$0	\$0	\$0	\$0	\$0	\$80,000	\$0	\$0	\$0	\$20,000	\$0	\$0	\$0	\$100,000
OK1401-17A2	\$0	\$0	\$0	\$110,400	\$0	\$0	\$0	\$0	\$0	\$0	\$0	\$0	\$0	\$27,600	\$0	\$0	\$0	\$138,000
OK1701	\$0	\$0	\$0	\$161,600	\$0	\$0	\$0	\$0	\$0	\$0	\$0	\$0	\$0	\$40,400	\$0	\$0	\$0	\$202,000
OK1702	\$0	\$0	\$0	\$3,068,800	\$0	\$0	\$0	\$0	\$0	\$0	\$0	\$0	\$204,924	\$562,276	\$0	\$0	\$0	\$3,836,000
OK1703	\$0	\$0	\$0	\$5,981,600	\$0	\$0	\$0	\$0	\$0	\$0	\$0	\$0	\$0	\$1,495,400	\$0	\$0	\$0	\$7,477,000
OK1801-17A2	\$1,716,720	\$0	\$0	\$1,456,080	\$0	\$0	\$0	\$0	\$0	\$0	\$0	\$0	\$429,180	\$364,020	\$0	\$0	\$0	\$3,966,000
OK1802-17A5	\$626,722	\$0	\$0	\$0	\$0	\$0	\$0	\$0	\$574,959	\$0	\$0	\$580,494	\$489,626	\$0	\$0	\$0	\$96,749	\$2,368,550
OK1803	\$0	\$0	\$0	\$0	\$0	\$0	\$0	\$0	\$0	\$16,000	\$0	\$0	\$0	\$4,000	\$0	\$0	\$0	\$20,000
RG0901-18A1	\$0	\$0	\$0	\$0	\$0	\$0	\$0	\$0	\$0	\$68,000	\$0	\$0	\$0	\$17,000	\$0	\$0	\$0	\$85,000
RG1201	\$0	\$0	\$0	\$0	\$0	\$0	\$0	\$0	\$0	\$800	\$0	\$0	\$0	\$200	\$0	\$0	\$0	\$1,000
RP1502	\$1,702,503	\$0	\$0	\$0	\$0	\$0	\$0	\$0	\$0	\$0	\$0	\$0	\$496,128	\$0	\$0	\$0	\$0	\$2,198,631
RP1701	\$0	\$0	\$0	\$0	\$0	\$0	\$0	\$0	\$0	\$8,000	\$0	\$0	\$0	\$2,000	\$0	\$0	\$0	\$10,000
RP1702	\$0	\$7,000	\$0	\$184,200	\$0	\$0	\$0	\$0	\$0	\$0	\$0	\$0	\$0	\$47,800	\$0	\$0	\$0	\$239,000
RP1703-17A3	\$0	\$0	\$0	\$1,600	\$0	\$0	\$0	\$0	\$0	\$0	\$0	\$0	\$0	\$400	\$0	\$0	\$0	\$2,000

FY 2018 continued on next page

# FINANCIAL SUMMARY

## Roadways

### YEARLY SUMMARY

	Federal												Local	State				
PROJECT	FHWA (STBG-U)	FHWA (SAFETY)	FHWA (BRIDGE)	FHWA (STBG)	FHWA (VM)	FHWA (130)	FHWA (NHS)	FHWA (BRM)	FHWA (BRO)	FHWA (NHPP)	FHWA (HPP)	FEMA	LOCAL	MoDOT	MoDOT-GCSA	MoDOT-AC	SEMA	TOTAL
2018 Continued																		
RP1704-17A3	\$0			\$0	\$1,600	\$0	\$0	\$0	\$0	\$0	\$0	\$0	\$0	\$400		\$0	\$0	\$2,000
RP1801-18AM1	\$0	\$112,500		\$0	\$0	\$0	\$0	\$0	\$0	\$0	\$0	\$0	\$0	\$12,500	\$0	\$0	\$0	\$125,000
SP1106	\$154,525	\$0		\$0	\$276,882	\$0	\$0	\$0	\$0	\$0	\$0	\$0	\$38,631	\$69,221	\$0	\$0	\$0	\$539,259
SP1112	\$1,110,295			\$0	\$0	\$0	\$0	\$0	\$0	\$1,883,198	\$166,134	\$0	\$0	\$748,373	\$0	\$0	\$0	\$3,908,000
SP1122	\$0	\$0		\$0	\$115,000	\$0	\$0	\$0	\$0	\$0	\$0	\$0	\$0	\$0	\$0	\$0	\$0	\$115,000
SP1204	\$0	\$0		\$0	\$0	\$0	\$0	\$0	\$0	\$1,012,000	\$0	\$0	\$0	\$253,000	\$0	\$0	\$0	\$1,265,000
SP1209	\$0	\$0		\$0	\$3,840	\$0	\$0	\$0	\$0	\$0	\$0	\$0	\$960	\$0	\$0	\$0	\$0	\$4,800
SP1401	\$0	\$0		\$0	\$0	\$0	\$0	\$0	\$0	\$1,600	\$0	\$0	\$0	\$400	\$0	\$0	\$0	\$2,000
SP1405-18A1	\$0	\$0		\$0	\$0	\$0	\$0	\$0	\$0	\$121,600	\$0	\$0	\$0	\$30,400	\$0	\$0	\$0	\$152,000
SP1419-18A1	\$0	\$0		\$0	\$128,000	\$0	\$0	\$0	\$0	\$0	\$0	\$0	\$0	\$32,000	\$0	\$0	\$0	\$160,000
SP1701	\$0	\$0		\$0	\$0	\$0	\$0	\$0	\$0	\$315,200	\$0	\$0	\$0	\$78,800	\$0	\$0	\$0	\$394,000
SP1704-18AM1	\$0	\$0		\$0	\$0	\$0	\$0	\$0	\$0	\$8,000	\$0	\$0	\$0	\$2,000	\$0	\$0	\$0	\$10,000
SP1705-18AM1	\$0	\$0		\$0	\$0	\$0	\$0	\$0	\$0	\$108,000	\$0	\$0	\$0	\$27,000	\$0	\$0	\$0	\$135,000
SP1707	\$0	\$0		\$0	\$4,000	\$0	\$0	\$0	\$0	\$0	\$0	\$0	\$0	\$1,000	\$0	\$0	\$0	\$5,000
SP1708	\$0	\$0		\$0	\$0	\$0	\$0	\$0	\$0	\$1,600	\$0	\$0	\$0	\$400	\$0	\$0	\$0	\$2,000
SP1709	\$0	\$0		\$0	\$0	\$0	\$0	\$0	\$0	\$16,000	\$0	\$0	\$0	\$4,000	\$0	\$0	\$0	\$20,000
SP1710	\$0	\$0		\$0	\$0	\$0	\$0	\$0	\$0	\$1,600	\$0	\$0	\$0	\$400	\$0	\$0	\$0	\$2,000
SP1714-17A2	\$1,600,000	\$0		\$0	\$0	\$0	\$0	\$0	\$0	\$0	\$0	\$0	\$400,000	\$0	\$0	\$0	\$0	\$2,000,000
SP1801-18	\$0	\$0		\$0	\$0	\$0	\$0	\$0	\$0	\$40,000	\$0	\$0	\$0	\$10,000	\$0	\$0	\$0	\$50,000
SP1802-18	\$0	\$0		\$0	\$0	\$0	\$0	\$0	\$0	\$40,000	\$0	\$0	\$0	\$10,000	\$0	\$0	\$0	\$50,000
SP1803-18	\$0	\$0	\$1,600		\$0	\$0	\$0	\$0	\$0	\$0	\$0	\$0	\$0	\$400	\$0	\$0	\$0	\$2,000
SP1804-18	\$0	\$0	\$0		\$620,000	\$0	\$0	\$0	\$0	\$0	\$0	\$0	\$0	\$155,000	\$0	\$0	\$0	\$775,000
SP1805-18	\$0	\$0	\$0		\$0	\$1,800	\$0	\$0	\$0	\$0	\$0	\$0	\$0	\$200	\$0	\$0	\$0	\$2,000
SP1806-18	\$0	\$0	\$0		\$0	\$851,400	\$0	\$0	\$0	\$0	\$0	\$0	\$0	\$94,600	\$0	\$0	\$0	\$946,000
SP1807-18	\$0	\$184,500		\$0	\$0	\$0	\$0	\$0	\$0	\$0	\$0	\$0	\$0	\$20,500	\$0	\$0	\$0	\$205,000
SP1808-18	\$0	\$0		\$0	\$0	\$0	\$0	\$0	\$0	\$52,800	\$0	\$0	\$0	\$13,200	\$0	\$0	\$0	\$66,000
SP1809-18	\$0	\$0		\$0	\$0	\$0	\$0	\$0	\$0	\$1,600	\$0	\$0	\$0	\$400	\$0	\$0	\$0	\$2,000
SP1810-18	\$0	\$0		\$0	\$0	\$0	\$0	\$0	\$0	\$1,742,400	\$0	\$0	\$0	\$435,600	\$0	\$0	\$0	\$2,178,000
SP1811-18	\$0	\$72,000		\$0	\$0	\$0	\$0	\$0	\$0	\$0	\$0	\$0	\$0	\$8,000	\$0	\$0	\$0	\$80,000
SP1812-18	\$0	\$72,000		\$0	\$0	\$0	\$0	\$0	\$0	\$0	\$0	\$0	\$0	\$8,000	\$0	\$0	\$0	\$80,000
SP1813-18AM1	\$0	\$0		\$0	\$0	\$0	\$0	\$0	\$0	\$1,747,200	\$0	\$0	\$0	\$436,800	\$0	\$0	\$0	\$2,184,000
SP1814-18AM1	\$0	\$0		\$0	\$0	\$0	\$0	\$0	\$0	\$212,000	\$0	\$0	\$0	\$53,000	\$0	\$0	\$0	\$265,000
SP1815-18A2	\$0	\$0		\$0	\$0	\$0	\$0	\$0	\$0	\$60,000	\$0	\$0	\$15,000	\$0	\$0	\$0	\$0	\$75,000
SP1816-18A2	\$0	\$0		\$0	\$0	\$0	\$0	\$0	\$0	\$60,000	\$0	\$0	\$0	\$15,000	\$0	\$0	\$0	\$75,000
SP1817-18A2	\$0	\$0		\$0	\$0	\$0	\$0	\$0	\$0	\$80,000	\$0	\$0	\$0	\$20,000	\$0	\$0	\$0	\$100,000
SP1818-18A2	\$0	\$0		\$0	\$0	\$0	\$0	\$0	\$0	\$4,000	\$0	\$0	\$0	\$1,000	\$0	\$0	\$0	\$5,000
WI1001-17A2	\$0	\$0		\$0	\$4,000	\$0	\$0	\$0	\$0	\$0	\$0	\$0	\$0	\$1,000	\$0	\$0	\$0	\$5,000
WI1701-17AM1	\$873,896			\$0	\$0	\$0	\$0	\$0	\$0	\$0	\$0	\$0	\$327,354	\$0	\$0	\$0	\$0	\$1,201,250
WI1801-18	\$0	\$0		\$0	\$532,000	\$0	\$0	\$0	\$0	\$0	\$0	\$0	\$0	\$133,000	\$0	\$0	\$0	\$665,000
SUBTOTAL	\$8,334,180	\$4,047,800	\$1,600	\$16,786,402	\$981,200	\$0	\$0	\$0	\$894,959	\$14,672,798	\$166,134	\$580,494	\$2,670,183	\$9,149,290	\$0	\$300,600	\$96,749	\$58,682,389
\$0																		
2019																		
BA1801-18	\$0	\$0		\$0	\$0	\$0	\$0	\$0	\$0	\$8,000	\$0	\$0	\$0	\$2,000	\$0	\$0	\$0	\$10,000
CC0901	\$0	\$0		\$0	\$1,600	\$0	\$0	\$0	\$0	\$0	\$0	\$0	\$0	\$400	\$0	\$0	\$0	\$2,000
CC1102	\$0	\$0		\$0	\$0	\$0	\$0	\$0	\$0	\$400,000	\$0	\$0	\$0	\$100,000	\$0	\$0	\$0	\$500,000
CC1601	\$0	\$900		\$0	\$0	\$0	\$0	\$0	\$0	\$0	\$0	\$0	\$0	\$100	\$0	\$0	\$0	\$1,000
CC1703	\$0	\$0		\$0	\$4,000	\$0	\$0	\$0	\$0	\$0	\$0	\$0	\$0	\$1,000	\$0	\$0	\$0	\$5,000
CC1801	\$0	\$0		\$0	\$1,240,800	\$0	\$0	\$0	\$0	\$0	\$0	\$0	\$0	\$310,200	\$0	\$0	\$0	\$1,551,000
CC1802	\$0	\$0		\$0	\$0	\$0	\$0	\$0	\$0	\$80,000	\$0	\$0	\$0	\$20,000	\$0	\$0	\$0	\$100,000
GR1403-18A1	\$0	\$0		\$0	\$0	\$0	\$0	\$0	\$0	\$8,000	\$0	\$0	\$0	\$2,000	\$0	\$0	\$0	\$10,000
GR1701	\$0	\$0		\$0	\$7,634,400	\$0	\$0	\$0	\$0	\$0	\$0	\$0	\$0	\$1,908,600	\$0	\$0	\$0	\$9,543,000
GR1703	\$0	\$0		\$0	\$3,200	\$0	\$0	\$0	\$0	\$0	\$0	\$0	\$0	\$800	\$0	\$0	\$0	\$4,000
GR1704	\$0	\$0		\$0	\$38,400	\$0	\$0	\$0	\$0	\$0	\$0	\$0	\$0	\$9,600	\$0	\$0	\$0	\$48,000
GR1705	\$0	\$76,000		\$0	\$225,600	\$0	\$0	\$0	\$0	\$0	\$0	\$0	\$0	\$75,400	\$0	\$0	\$0	\$377,000
GR1707-17A6	\$0	\$0		\$0	\$0	\$0	\$0	\$0	\$0	\$0	\$0	\$0	\$1,000	\$0	\$0	\$0	\$1,000	
GR1801-18	\$0	\$22,500		\$0	\$0	\$0	\$0	\$0	\$0	\$0	\$0	\$0	\$0	\$2,500	\$0	\$0	\$0	\$25,000
GR1804-18	\$0	\$0		\$0	\$0	\$0	\$0	\$0	\$0	\$43,200	\$0	\$0	\$0	\$10,800	\$0	\$0	\$0	\$54,000
GR1805-18	\$0	\$0		\$0	\$800	\$0	\$0	\$0	\$0	\$0	\$0	\$0	\$0	\$200	\$0	\$0	\$0	\$1,000
MO1105	\$0	\$0		\$0	\$0	\$0	\$0	\$0	\$0	\$0	\$0	\$0	\$0	\$284,000	\$0	\$0	\$0	\$284,000
MO1705	\$0	\$0		\$0	\$1,600	\$0	\$0	\$0	\$0	\$0	\$0	\$0	\$0	\$400	\$0	\$0	\$0	\$2,000
MO1709	\$0	\$162,900		\$0	\$0	\$0	\$0	\$0	\$0	\$0	\$0	\$0	\$0	\$18,100	\$0	\$0	\$0	\$181,000
MO1711	\$0	\$0		\$0	\$511,200	\$0	\$0	\$0	\$0	\$0	\$0	\$0	\$0	\$127,800	\$0	\$0	\$0	\$639,000
MO1712	\$0	\$0		\$0	\$0	\$0	\$0	\$0	\$0	\$1,600	\$0	\$0	\$0	\$400	\$0	\$0	\$0	\$2,000
MO1714	\$0	\$0		\$0	\$0	\$0	\$0	\$0	\$0	\$1,600	\$0	\$0	\$0	\$400	\$0	\$0	\$0	\$2,000
MO1717	\$324,000	\$0		\$0	\$471,200	\$0	\$0	\$0	\$0	\$0	\$0	\$0	\$81,000	\$117,800	\$0	\$0	\$0	\$994,000

FY 2019 continued on next page

# FINANCIAL SUMMARY

## Roadways

### YEARLY SUMMARY

	Federal												Local	State				
PROJECT	FHWA (STBG-U)	FHWA (SAFETY)	FHWA (BRIDGE)	FHWA (STBG)	FHWA (VM)	FHWA (130)	FHWA (NHS)	FHWA (BRM)	FHWA (BRO)	FHWA (NHPP)	FHWA (HPP)	FEMA	LOCAL	MoDOT	MoDOT-GCSA	MoDOT-AC	SEMA	TOTAL
2019 Continued																		
MO1719	\$0	\$0	\$0	\$0	\$0	\$0	\$0	\$0	\$0	\$38,400	\$0	\$0	\$0	\$9,600	\$0	\$0	\$0	\$48,000
MO1720	\$0	\$0	\$0	\$0	\$0	\$0	\$0	\$0	\$0	\$4,000	\$0	\$0	\$0	\$1,000	\$0	\$0	\$0	\$5,000
MO1721	\$0	\$27,000	\$0	\$0	\$0	\$0	\$0	\$0	\$0	\$0	\$0	\$0	\$0	\$3,000	\$0	\$0	\$0	\$30,000
MO1722	\$0	\$0	\$0	\$0	\$0	\$0	\$0	\$0	\$0	\$16,800	\$0	\$0	\$0	\$4,200	\$0	\$0	\$0	\$21,000
MO1723	\$0	\$0	\$0	\$4,000	\$0	\$0	\$0	\$0	\$0	\$0	\$0	\$0	\$0	\$1,000	\$0	\$0	\$0	\$5,000
MO1803-18	\$0	\$900	\$0	\$0	\$0	\$0	\$0	\$0	\$0	\$0	\$0	\$0	\$0	\$100	\$0	\$0	\$0	\$1,000
MO1804-18	\$0	\$0	\$0	\$800	\$0	\$0	\$0	\$0	\$0	\$0	\$0	\$0	\$0	\$200	\$0	\$0	\$0	\$1,000
MO1805-18	\$0	\$0	\$0	\$1,364,000	\$0	\$0	\$0	\$0	\$0	\$0	\$0	\$0	\$0	\$341,000	\$0	\$0	\$0	\$1,705,000
NX1701	\$0	\$0	\$0	\$0	\$0	\$0	\$0	\$0	\$0	\$221,600	\$0	\$0	\$0	\$55,400	\$0	\$0	\$0	\$277,000
NX1702	\$0	\$0	\$0	\$5,335,200	\$0	\$0	\$0	\$0	\$0	\$256,800	\$0	\$0	\$0	\$1,398,000	\$0	\$0	\$0	\$6,990,000
NX1704	\$0	\$0	\$0	\$0	\$0	\$0	\$0	\$0	\$0	\$1,600	\$0	\$0	\$0	\$400	\$0	\$0	\$0	\$2,000
NX1705	\$0	\$0	\$0	\$0	\$0	\$0	\$0	\$0	\$0	\$4,148,800	\$0	\$0	\$0	\$1,037,200	\$0	\$0	\$0	\$5,186,000
NX1801-17A2	\$848,486	\$0	\$0	\$0	\$0	\$0	\$0	\$0	\$0	\$745,114	\$0	\$0	\$212,121	\$186,279	\$0	\$0	\$0	\$1,992,000
NX1802-18	\$290,928	\$0	\$0	\$0	\$0	\$0	\$0	\$0	\$0	\$0	\$0	\$0	\$72,732	\$0	\$0	\$0	\$0	\$363,660
NX1803-18A2	\$0	\$0	\$0	\$0	\$0	\$0	\$0	\$0	\$0	\$76,800	\$0	\$0	\$19,200	\$0	\$0	\$0	\$0	\$96,000
OK1401-17A2	\$1,101,726	\$0	\$0	\$1,110,998	\$0	\$0	\$0	\$0	\$0	\$0	\$0	\$0	\$275,431	\$277,749	\$0	\$0	\$0	\$2,765,904
OK1701	\$0	\$835,000	\$0	\$3,897,800	\$0	\$0	\$0	\$0	\$0	\$0	\$0	\$0	\$0	\$1,183,200	\$0	\$0	\$0	\$5,916,000
OK1802-17A5	\$173,278	\$0	\$0	\$0	\$0	\$0	\$0	\$0	\$158,967	\$0	\$0	\$160,498	\$135,375	\$0	\$0	\$26,750	\$0	\$654,868
OK1803	\$0	\$0	\$0	\$0	\$0	\$0	\$0	\$0	\$0	\$114,400	\$0	\$0	\$0	\$28,600	\$0	\$0	\$0	\$143,000
RG0901-18A1	\$0	\$0	\$0	\$0	\$0	\$0	\$0	\$0	\$0	\$8,000	\$0	\$0	\$0	\$2,000	\$0	\$0	\$0	\$10,000
RG1201	\$0	\$0	\$0	\$0	\$0	\$0	\$0	\$0	\$0	\$800	\$0	\$0	\$0	\$200	\$0	\$0	\$0	\$1,000
RP1701	\$0	\$0	\$0	\$0	\$0	\$0	\$0	\$0	\$0	\$8,000	\$0	\$0	\$0	\$2,000	\$0	\$0	\$0	\$10,000
RP1703-17A3	\$0	\$0	\$0	\$1,600	\$0	\$0	\$0	\$0	\$0	\$0	\$0	\$0	\$0	\$400	\$0	\$0	\$0	\$2,000
RP1704-17A3	\$0	\$0	\$0	\$1,600	\$0	\$0	\$0	\$0	\$0	\$0	\$0	\$0	\$0	\$400	\$0	\$0	\$0	\$2,000
RP1801-18AM1	\$772,160	\$592,056	\$0	\$0	\$0	\$0	\$0	\$0	\$0	\$0	\$0	\$193,040	\$65,784	\$0	\$0	\$0	\$0	\$1,623,040
RP1802-18	\$0	\$0	\$0	\$0	\$0	\$0	\$0	\$0	\$0	\$28,000	\$0	\$0	\$0	\$7,000	\$0	\$0	\$0	\$35,000
RP1803-18	\$0	\$0	\$0	\$0	\$0	\$0	\$0	\$0	\$0	\$0	\$0	\$0	\$0	\$2,800	\$0	\$11,200	\$0	\$14,000
SP1401	\$0	\$0	\$0	\$0	\$0	\$0	\$0	\$0	\$0	\$1,600	\$0	\$0	\$0	\$400	\$0	\$0	\$0	\$2,000
SP1405-18A1	\$0	\$0	\$0	\$0	\$0	\$0	\$0	\$0	\$0	\$40,000	\$0	\$0	\$0	\$10,000	\$0	\$0	\$0	\$50,000
SP1419-18A1	\$0	\$0	\$0	\$0	\$40,000	\$0	\$0	\$0	\$0	\$0	\$0	\$0	\$0	\$10,000	\$0	\$0	\$0	\$50,000
SP1605-17AM1	\$0	\$0	\$0	\$0	\$0	\$0	\$0	\$963,132	\$0	\$0	\$0	\$0	\$240,783	\$0	\$0	\$0	\$0	\$1,203,915
SP1704-18AM1	\$0	\$0	\$0	\$0	\$0	\$0	\$0	\$0	\$0	\$450,400	\$0	\$0	\$0	\$112,600	\$0	\$0	\$0	\$563,000
SP1705-18AM1	\$0	\$0	\$0	\$0	\$0	\$0	\$0	\$0	\$0	\$6,011,200	\$0	\$0	\$0	\$1,502,800	\$0	\$0	\$0	\$7,514,000
SP1707	\$0	\$0	\$0	\$32,000	\$0	\$0	\$0	\$0	\$0	\$0	\$0	\$0	\$0	\$8,000	\$0	\$0	\$0	\$40,000
SP1708	\$0	\$0	\$0	\$0	\$0	\$0	\$0	\$0	\$0	\$8,000	\$0	\$0	\$0	\$2,000	\$0	\$0	\$0	\$10,000
SP1709	\$0	\$0	\$0	\$0	\$0	\$0	\$0	\$0	\$0	\$16,000	\$0	\$0	\$0	\$4,000	\$0	\$0	\$0	\$20,000
SP1710	\$0	\$0	\$0	\$0	\$0	\$0	\$0	\$0	\$0	\$14,400	\$0	\$0	\$0	\$3,600	\$0	\$0	\$0	\$18,000
SP1801-18	\$0	\$0	\$0	\$0	\$0	\$0	\$0	\$0	\$0	\$1,600	\$0	\$0	\$0	\$400	\$0	\$0	\$0	\$2,000
SP1802-18	\$0	\$0	\$0	\$0	\$0	\$0	\$0	\$0	\$0	\$1,600	\$0	\$0	\$0	\$400	\$0	\$0	\$0	\$2,000
SP1803-18	\$0	\$0	\$73,600	\$0	\$0	\$0	\$0	\$0	\$0	\$0	\$0	\$0	\$0	\$18,400	\$0	\$0	\$0	\$92,000
SP1805-18	\$0	\$0	\$0	\$0	\$14,400	\$0	\$0	\$0	\$0	\$0	\$0	\$0	\$0	\$1,600	\$0	\$0	\$0	\$16,000
SP1807-18	\$0	\$1,774,800	\$0	\$0	\$0	\$0	\$0	\$0	\$0	\$0	\$0	\$0	\$0	\$197,200	\$0	\$0	\$0	\$1,972,000
SP1809-18	\$0	\$0	\$0	\$0	\$0	\$0	\$0	\$0	\$0	\$29,600	\$0	\$0	\$0	\$7,400	\$0	\$0	\$0	\$37,000
SP1815-18A2	\$0	\$0	\$0	\$0	\$0	\$0	\$0	\$0	\$0	\$60,000	\$0	\$0	\$0	\$15,000	\$0	\$0	\$0	\$75,000
SP1816-18A2	\$0	\$0	\$0	\$0	\$0	\$0	\$0	\$0	\$0	\$67,200	\$0	\$0	\$0	\$16,800	\$0	\$0	\$0	\$84,000
SP1817-18A2	\$0	\$0	\$0	\$0	\$0	\$0	\$0	\$0	\$0	\$80,000	\$0	\$0	\$0	\$20,000	\$0	\$0	\$0	\$100,000
SP1818-18A2	\$0	\$0	\$0	\$0	\$0	\$0	\$0	\$0	\$0	\$4,000	\$0	\$0	\$0	\$1,000	\$0	\$0	\$0	\$5,000
SP1901-18	\$0	\$0	\$0	\$0	\$0	\$180,000	\$0	\$0	\$0	\$0	\$0	\$0	\$0	\$0	\$20,000	\$0	\$0	\$200,000
WI1001-17A2	\$0	\$0	\$0	\$4,000	\$0	\$0	\$0	\$0	\$0	\$0	\$0	\$0	\$0	\$1,000	\$0	\$0	\$0	\$5,000
WI1801-18	\$0	\$0	\$0	\$5,700,000	\$0	\$0	\$0	\$0	\$0	\$0	\$0	\$0	\$0	\$1,425,000	\$0	\$0	\$0	\$7,125,000
SUBTOTAL	\$3,510,578	\$3,492,056	\$73,600	\$27,584,798	\$54,400	\$180,000	\$0	\$963,132	\$158,967	\$12,997,114	\$0	\$160,498	\$1,230,682	\$10,957,612	\$20,000	\$11,200	\$26,750	\$61,421,387
2020																		
BA1801-18	\$0	\$0	\$0	\$0	\$0	\$0	\$0	\$0	\$0	\$660,800	\$0	\$0	\$0	\$165,200	\$0	\$0	\$0	\$826,000
CC1102	\$0	\$0	\$0	\$0	\$0	\$0	\$1,600	\$0	\$0	\$0	\$0	\$0	\$0	\$400	\$0	\$0	\$0	\$2,000
CC1601	\$0	\$55,800	\$0	\$0	\$0	\$0	\$0	\$0	\$0	\$0	\$0	\$0	\$0	\$6,200	\$0	\$0	\$0	\$62,000
CC1703	\$0	\$0	\$0	\$4,000	\$0	\$0	\$0	\$0	\$0	\$0	\$0	\$0	\$0	\$1,000	\$0	\$0	\$0	\$5,000
CC1802	\$0	\$0	\$0	\$0	\$0	\$0	\$0	\$0	\$0	\$313,600	\$0	\$0	\$0	\$78,400	\$0	\$0	\$0	\$392,000
GR1403-18A1	\$0	\$0	\$0	\$0	\$0	\$0	\$0	\$0	\$0	\$8,000	\$0	\$0	\$0	\$2,000	\$0	\$0	\$0	\$10,000
GR1502	\$1,120,000	\$0	\$0	\$0	\$0	\$0	\$0	\$0	\$0	\$0	\$0	\$0	\$280,000	\$0	\$0	\$0	\$0	\$1,400,000
GR1703	\$0	\$0	\$0	\$113,600	\$0	\$0	\$0	\$0	\$0	\$0	\$0	\$0	\$0	\$28,400	\$0	\$0	\$0	\$142,000
GR1704	\$0	\$242,000	\$0	\$417,200	\$0	\$0	\$0	\$0	\$0	\$0	\$0	\$0	\$0	\$164,800	\$0	\$0	\$0	\$824,000
GR1707-17A6	\$0	\$0	\$0	\$0	\$0	\$0	\$0	\$0	\$0	\$0	\$0	\$0	\$1,000	\$0	\$0	\$0	\$1,000	
GR1801-18	\$0	\$22,500	\$0	\$0	\$0	\$0	\$0	\$0	\$0	\$0	\$0	\$0	\$0	\$2,500	\$0	\$0	\$0	\$25,000
GR1804-18	\$0	\$0	\$0	\$0	\$0	\$0	\$0	\$0	\$0	\$2,745,600	\$0	\$0	\$0	\$686,400	\$0	\$0	\$0	\$3,432,000
GR1805-18	\$0	\$0	\$0	\$43,200	\$0	\$0	\$0	\$0	\$0	\$0	\$0	\$0	\$0	\$10,800	\$0	\$0	\$0	\$54,000
MO1105	\$0	\$0	\$0	\$0	\$0	\$0	\$0	\$0	\$0	\$0	\$0	\$0	\$0	\$284,000	\$0	\$0	\$0	\$284,000

FY 2020 continued on next page

# FINANCIAL SUMMARY

## Roadways

### YEARLY SUMMARY

	Federal												Local	State				
PROJECT	FHWA (STBG-U)	FHWA (SAFETY)	FHWA (BRIDGE)	FHWA (STBG)	FHWA (VM)	FHWA (130)	FHWA (NHS)	FHWA (BRM)	FHWA (BRO)	FHWA (NHPP)	FHWA (HPP)	FEMA	LOCAL	MoDOT	MoDOT-GCSA	MoDOT-AC	SEMA	TOTAL
2020 Continued																		
MO1705	\$0	\$0	\$0	\$788,000	\$0	\$0	\$0	\$0	\$0	\$0	\$0	\$0	\$0	\$197,000	\$0	\$0	\$0	\$985,000
MO1710-17A2	\$0	\$0	\$0	\$1,664,000	\$0	\$0	\$0	\$0	\$0	\$0	\$0	\$0	\$0	\$416,000	\$0	\$0	\$0	\$2,080,000
MO1711	\$0	\$0	\$0	\$4,349,600	\$0	\$0	\$0	\$0	\$0	\$0	\$0	\$0	\$0	\$1,087,400	\$0	\$0	\$0	\$5,437,000
MO1712	\$0	\$0	\$0	\$0	\$0	\$0	\$0	\$0	\$0	\$1,600	\$0	\$0	\$0	\$400	\$0	\$0	\$0	\$2,000
MO1714	\$0	\$0	\$0	\$0	\$0	\$0	\$0	\$0	\$0	\$33,600	\$0	\$0	\$0	\$8,400	\$0	\$0	\$0	\$42,000
MO1719	\$0	\$0	\$0	\$0	\$0	\$0	\$0	\$0	\$0	\$38,400	\$0	\$0	\$0	\$9,600	\$0	\$0	\$0	\$48,000
MO1720	\$0	\$0	\$0	\$0	\$0	\$0	\$0	\$0	\$0	\$4,000	\$0	\$0	\$0	\$1,000	\$0	\$0	\$0	\$5,000
MO1721	\$0	\$27,000	\$0	\$0	\$0	\$0	\$0	\$0	\$0	\$0	\$0	\$0	\$0	\$3,000	\$0	\$0	\$0	\$30,000
MO1722	\$0	\$0	\$0	\$0	\$0	\$0	\$0	\$0	\$0	\$18,400	\$0	\$0	\$0	\$4,600	\$0	\$0	\$0	\$23,000
MO1723	\$0	\$0	\$0	\$3,200	\$0	\$0	\$0	\$0	\$0	\$0	\$0	\$0	\$0	\$800	\$0	\$0	\$0	\$4,000
MO1803-18	\$0	\$161,100	\$0	\$0	\$0	\$0	\$0	\$0	\$0	\$0	\$0	\$0	\$0	\$17,900	\$0	\$0	\$0	\$179,000
MO1804-18	\$332,000	\$0	\$0	\$471,200	\$0	\$0	\$0	\$0	\$0	\$0	\$0	\$0	\$83,000	\$117,800	\$0	\$0	\$0	\$1,004,000
MO1806-18	\$0	\$0	\$0	\$1,440,800	\$0	\$0	\$0	\$0	\$0	\$0	\$0	\$0	\$0	\$360,200	\$0	\$0	\$0	\$1,801,000
MO2001-18	\$0	\$855,900	\$0	\$0	\$0	\$0	\$0	\$0	\$0	\$0	\$0	\$0	\$0	\$0	\$0	\$0	\$0	\$855,900
MO2002-18	\$0	\$1,013,400	\$0	\$0	\$0	\$0	\$0	\$0	\$0	\$0	\$0	\$0	\$0	\$112,600	\$0	\$0	\$0	\$1,126,000
NX1701	\$0	\$0	\$0	\$0	\$0	\$0	\$0	\$0	\$0	\$6,378,400	\$0	\$0	\$0	\$1,594,600	\$0	\$0	\$0	\$7,973,000
NX1704	\$0	\$0	\$0	\$0	\$0	\$0	\$0	\$0	\$0	\$1,600	\$0	\$0	\$0	\$400	\$0	\$0	\$0	\$2,000
NX1803-18A2	\$0	\$0	\$0	\$0	\$0	\$0	\$0	\$0	\$0	\$16,000	\$0	\$0	\$0	\$4,000	\$0	\$0	\$0	\$20,000
OK1803	\$0	\$0	\$0	\$0	\$0	\$0	\$0	\$0	\$0	\$164,000	\$0	\$0	\$0	\$41,000	\$0	\$0	\$0	\$205,000
RG0901-18A1	\$0	\$0	\$0	\$0	\$0	\$0	\$0	\$0	\$0	\$8,000	\$0	\$0	\$0	\$2,000	\$0	\$0	\$0	\$10,000
RG1201	\$0	\$0	\$0	\$0	\$0	\$0	\$0	\$0	\$0	\$800	\$0	\$0	\$0	\$200	\$0	\$0	\$0	\$1,000
RP1701	\$0	\$0	\$0	\$0	\$0	\$0	\$0	\$0	\$0	\$8,000	\$0	\$0	\$0	\$2,000	\$0	\$0	\$0	\$10,000
RP1703-17A3	\$0	\$0	\$0	\$1,600	\$0	\$0	\$0	\$0	\$0	\$0	\$0	\$0	\$0	\$400	\$0	\$0	\$0	\$2,000
RP1704-17A3	\$0	\$0	\$0	\$1,600	\$0	\$0	\$0	\$0	\$0	\$0	\$0	\$0	\$0	\$400	\$0	\$0	\$0	\$2,000
RP1802-18	\$0	\$0	\$0	\$0	\$0	\$0	\$0	\$0	\$0	\$1,852,800	\$0	\$0	\$0	\$463,200	\$0	\$0	\$0	\$2,316,000
RP1803-18	\$0	\$0	\$0	\$0	\$0	\$0	\$0	\$0	\$0	\$0	\$0	\$0	\$0	\$210,400	\$0	\$841,600	\$0	\$1,052,000
SP1401	\$0	\$0	\$0	\$0	\$0	\$0	\$0	\$0	\$0	\$5,600	\$0	\$0	\$0	\$1,400	\$0	\$0	\$0	\$7,000
SP1405-18A1	\$0	\$0	\$0	\$0	\$0	\$0	\$0	\$0	\$0	\$40,000	\$0	\$0	\$0	\$10,000	\$0	\$0	\$0	\$50,000
SP1419-18A1	\$0	\$0	\$0	\$0	\$9,000	\$0	\$0	\$0	\$0	\$0	\$0	\$0	\$0	\$1,000	\$0	\$0	\$0	\$10,000
SP1707	\$0	\$300,000	\$0	\$292,000	\$0	\$0	\$0	\$0	\$0	\$0	\$0	\$0	\$0	\$148,000	\$0	\$0	\$0	\$740,000
SP1708	\$0	\$0	\$0	\$0	\$0	\$0	\$0	\$0	\$0	\$896,800	\$0	\$0	\$0	\$224,200	\$0	\$0	\$0	\$1,121,000
SP1709	\$0	\$0	\$0	\$0	\$0	\$0	\$0	\$0	\$0	\$16,000	\$0	\$0	\$0	\$4,000	\$0	\$0	\$0	\$20,000
SP1710	\$0	\$0	\$0	\$0	\$0	\$0	\$0	\$0	\$0	\$664,000	\$0	\$0	\$0	\$166,000	\$0	\$0	\$0	\$830,000
SP1801-18	\$0	\$0	\$0	\$0	\$0	\$0	\$0	\$0	\$0	\$1,600	\$0	\$0	\$0	\$400	\$0	\$0	\$0	\$2,000
SP1802-18	\$0	\$0	\$0	\$0	\$0	\$0	\$0	\$0	\$0	\$1,600	\$0	\$0	\$0	\$400	\$0	\$0	\$0	\$2,000
SP1803-18	\$0	\$0	\$785,600	\$0	\$0	\$0	\$0	\$0	\$0	\$0	\$0	\$0	\$0	\$196,400	\$0	\$0	\$0	\$982,000
SP1805-18	\$0	\$0	\$0	\$0	\$1,511,100	\$0	\$0	\$0	\$0	\$0	\$0	\$0	\$0	\$167,900	\$0	\$0	\$0	\$1,679,000
SP1809-18	\$0	\$0	\$0	\$0	\$0	\$0	\$0	\$0	\$0	\$1,960,000	\$0	\$0	\$0	\$490,000	\$0	\$0	\$0	\$2,450,000
SP1815-18A2	\$0	\$0	\$0	\$0	\$0	\$0	\$0	\$0	\$0	\$19,200	\$0	\$0	\$0	\$4,800	\$0	\$0	\$0	\$24,000
SP1816-18A2	\$0	\$0	\$0	\$0	\$0	\$0	\$0	\$0	\$0	\$8,000	\$0	\$0	\$0	\$2,000	\$0	\$0	\$0	\$10,000
SP1817-18A2	\$0	\$0	\$0	\$0	\$0	\$0	\$0	\$0	\$0	\$20,000	\$0	\$0	\$0	\$5,000	\$0	\$0	\$0	\$25,000
WI1001-17A2	\$0	\$0	\$0	\$4,000	\$0	\$0	\$0	\$0	\$0	\$0	\$0	\$0	\$0	\$1,000	\$0	\$0	\$0	\$5,000
SUBTOTAL	\$1,452,000	\$2,677,700	\$785,600	\$9,594,000	\$1,520,100	\$0	\$1,600	\$0	\$0	\$15,886,400	\$0	\$0	\$364,000	\$7,507,900	\$0	\$841,600	\$0	\$40,630,900

# FINANCIAL SUMMARY

## Roadways

### YEARLY SUMMARY

PROJECT SUMMARY																		
PROJECT	Federal												Local	State				TOTAL
	FHWA (STBG-U)	FHWA (SAFETY)	FHWA (BRIDGE)	FHWA (STBG)	FHWA (VM)	FHWA (130)	FHWA (NHS)	FHWA (BRM)	FHWA (BRO)	FHWA (NHPP)	FHWA (HPP)	FEMA	LOCAL	MoDOT	MoDOT-GCSA	MoDOT-AC	SEMA	
2021																		
CC1703	\$0	\$0	\$0	\$4,000	\$0	\$0	\$0	\$0	\$0	\$0	\$0	\$0	\$0	\$1,000	\$0	\$0	\$0	\$5,000
CC1802	\$0	\$0	\$0	\$0	\$0	\$0	\$0	\$0	\$0	\$3,593,600	\$0	\$0	\$0	\$898,400	\$0	\$0	\$0	\$4,492,000
GR1403-18A1	\$0	\$0	\$0	\$0	\$0	\$0	\$0	\$0	\$0	\$8,000	\$0	\$0	\$0	\$2,000	\$0	\$0	\$0	\$10,000
MO1105	\$0	\$0	\$0	\$0	\$0	\$0	\$0	\$0	\$0	\$0	\$0	\$0	\$0	\$284,000	\$0	\$0	\$0	\$284,000
MO1712	\$0	\$0	\$0	\$56,000	\$0	\$0	\$0	\$0	\$0	\$0	\$0	\$0	\$0	\$14,000	\$0	\$0	\$0	\$70,000
MO1714	\$0	\$0	\$0	\$216,800	\$0	\$0	\$0	\$0	\$0	\$4,458,400	\$0	\$0	\$0	\$1,168,800	\$0	\$0	\$0	\$5,844,000
MO1719	\$0	\$0	\$0	\$0	\$0	\$0	\$0	\$0	\$0	\$38,400	\$0	\$0	\$0	\$9,600	\$0	\$0	\$0	\$48,000
MO1720	\$0	\$0	\$0	\$0	\$0	\$0	\$0	\$0	\$0	\$3,200	\$0	\$0	\$0	\$800	\$0	\$0	\$0	\$4,000
MO1721	\$0	\$26,100	\$0	\$0	\$0	\$0	\$0	\$0	\$0	\$0	\$0	\$0	\$0	\$2,900	\$0	\$0	\$0	\$29,000
MO1722	\$0	\$0	\$0	\$0	\$0	\$0	\$0	\$0	\$0	\$16,800	\$0	\$0	\$0	\$4,200	\$0	\$0	\$0	\$21,000
MO1723	\$0	\$0	\$0	\$3,200	\$0	\$0	\$0	\$0	\$0	\$0	\$0	\$0	\$0	\$800	\$0	\$0	\$0	\$4,000
MO2001-18	\$0	\$54,900	\$0	\$0	\$0	\$0	\$0	\$0	\$0	\$0	\$0	\$0	\$95,100	\$6,100	\$0	\$0	\$0	\$156,100
MO2101-18	\$340,000	\$0	\$0	\$0	\$0	\$0	\$0	\$0	\$0	\$0	\$0	\$0	\$85,000	\$0	\$0	\$0	\$0	\$425,000
OK1803	\$0	\$0	\$0	\$0	\$0	\$0	\$0	\$0	\$0	\$2,492,000	\$0	\$0	\$0	\$623,000	\$0	\$0	\$0	\$3,115,000
RG0901-18A1	\$0	\$0	\$0	\$0	\$0	\$0	\$0	\$0	\$0	\$8,000	\$0	\$0	\$0	\$2,000	\$0	\$0	\$0	\$10,000
RG1201	\$0	\$0	\$0	\$0	\$0	\$0	\$4,800	\$0	\$0	\$0	\$0	\$0	\$0	\$1,200	\$0	\$0	\$0	\$6,000
RP1701	\$0	\$0	\$0	\$0	\$0	\$0	\$0	\$0	\$0	\$8,000	\$0	\$0	\$0	\$2,000	\$0	\$0	\$0	\$10,000
RP1703-17A3	\$0	\$0	\$0	\$1,600	\$0	\$0	\$0	\$0	\$0	\$0	\$0	\$0	\$0	\$400	\$0	\$0	\$0	\$2,000
RP1704-17A3	\$0	\$0	\$0	\$1,600	\$0	\$0	\$0	\$0	\$0	\$0	\$0	\$0	\$0	\$400	\$0	\$0	\$0	\$2,000
SP1401	\$0	\$0	\$0	\$0	\$0	\$0	\$0	\$0	\$0	\$440,000	\$0	\$0	\$0	\$110,000	\$0	\$0	\$0	\$550,000
SP1419-18A1	\$0	\$0	\$0	\$0	\$9,000	\$0	\$0	\$0	\$0	\$0	\$0	\$0	\$0	\$1,000	\$0	\$0	\$0	\$10,000
SP1709	\$0	\$0	\$0	\$0	\$0	\$0	\$0	\$0	\$0	\$16,000	\$0	\$0	\$0	\$4,000	\$0	\$0	\$0	\$20,000
WI1001-17A2	\$0	\$0	\$0	\$4,000	\$0	\$0	\$0	\$0	\$0	\$0	\$0	\$0	\$0	\$1,000	\$0	\$0	\$0	\$5,000
SUBTOTAL	\$340,000	\$81,000	\$0	\$287,200	\$9,000	\$0	\$4,800	\$0	\$0	\$11,082,400	\$0	\$0	\$180,100	\$3,137,600	\$0	\$0	\$0	\$15,122,100
GRAND TOTAL	\$13,636,758	\$10,298,556	\$860,800	\$54,252,400	\$2,564,700	\$180,000	\$6,400	\$963,132	\$1,053,926	\$54,638,712	\$166,134	\$740,992	\$4,444,965	\$30,752,402	\$20,000	\$1,153,400	\$123,499	\$175,856,776

# FINANCIAL CONSTRAINT

## Roadways

	Federal Funding Source												TOTAL Federal Funds	Local	MoDOT Programmed Funds	Other	State Operations and Maintenance	TOTAL
	STBG-U	Safety	Bridge	STBG	I/M	130	NHS	BRM	BRO	NHPP	HPP	FEMA						
2018 Funds Programmed	\$8,334,180	\$4,047,800	\$1,600	\$16,786,402	\$981,200	\$0	\$0	\$0	\$894,959	\$14,672,798	\$166,134	\$580,494	\$46,465,567	\$2,670,183	\$9,449,890	\$96,749	\$4,779,389	\$63,461,778
2019 Funds Programmed	\$3,510,578	\$3,492,056	\$73,600	\$27,584,798	\$54,400	\$180,000	\$0	\$963,132	\$158,967	\$12,997,114	\$0	\$160,498	\$49,175,143	\$1,230,682	\$10,988,812	\$26,750	\$4,851,080	\$66,272,467
2020 Funds Programmed	\$1,452,000	\$2,677,700	\$785,600	\$9,594,000	\$1,520,100	\$0	\$1,600	\$0	\$0	\$15,886,400	\$0	\$0	\$31,917,400	\$364,000	\$8,349,500	\$0	\$4,923,846	\$45,554,746
2021 Funds Programmed	\$340,000	\$81,000	\$0	\$287,200	\$9,000	\$0	\$4,800	\$0	\$0	\$11,082,400	\$0	\$0	\$11,804,400	\$180,100	\$3,137,600	\$0	\$4,997,704	\$20,119,804
<b>Total</b>	<b>\$13,636,758</b>	<b>\$10,298,556</b>	<b>\$ 860,800</b>	<b>\$54,252,400</b>	<b>\$ 2,564,700</b>	<b>\$ 180,000</b>	<b>\$6,400</b>	<b>\$963,132</b>	<b>#####</b>	<b>\$54,638,712</b>	<b>\$166,134</b>	<b>\$740,992</b>	<b>\$ 139,362,510</b>	<b>\$4,444,965</b>	<b>\$ 31,925,802</b>	<b>\$123,499</b>	<b>\$19,552,019</b>	<b>\$195,408,795</b>

	Prior Year	FY 2018	FY 2019	FY 2020	FY 2021	TOTAL
Available State and Federal Funding	\$0	\$42,451,600	\$54,679,300	\$49,650,800	\$44,779,200	\$191,560,900
Available Operations and Maintenance Funding	\$0	\$4,779,389	\$4,851,080	\$4,923,846	\$4,997,704	\$19,552,019
Funds from Other Sources	\$864,492	\$0	\$0	\$0	\$0	\$864,492
Available Suballocated Funding	\$18,576,393	\$5,968,827	\$6,088,203	\$6,209,967	\$6,088,203	\$42,931,594
<b>TOTAL AVAILABLE FUNDING</b>	<b>\$19,440,885</b>	<b>\$53,199,816</b>	<b>\$65,618,583</b>	<b>\$60,784,613</b>	<b>\$55,865,107</b>	<b>\$254,909,005</b>
Prior Year Funding	\$19,440,885	\$9,178,923	\$8,525,039	\$23,754,906		--
Programmed State and Federal Funding		(\$63,461,778)	(\$66,272,467)	(\$45,554,746)	(\$20,119,804)	(\$195,408,795)
<b>TOTAL REMAINING</b>	<b>\$19,440,885</b>	<b>\$9,178,923</b>	<b>\$8,525,039</b>	<b>\$23,754,906</b>	<b>\$59,500,210</b>	<b>\$59,500,210</b>

Additional Funds from Other Sources include one-time FEMA and SEMA grant funding for the Riverside Bridge Replacement.

Available State and Federal Funding shown here does not include funding Available shown on Bike/Ped Financial Constraint Page.