



U.S. Department of Transportation

Federal Transit Administration
901 Locust, Room 404
Kansas City, MO 64106
816-329-3920
816-329-3921 (fax)

Federal Highway Administration
3220 W. Edgewood, Suite H
Jefferson City, MO 65109
573-636-7104
573-636-9283 (fax)

March 4, 2015

Mr. Dave Nichols, Director
Missouri Department of Transportation
P.O. Box 270
Jefferson City, Missouri 65102

Re: FHWA/FTA Approval of "Highway Project Only"
Amendment to the Missouri FY 2015-2019 STIP to incorporate
the Ozarks Transportation Organization (OTO) FY 2015-2018
Transportation Improvement Program (TIP) Amendment #3

Dear Mr. Nichols:

The Federal Highway Administration (FHWA) has reviewed the requested amendment to the FY 2015-2019 Missouri State Transportation Improvement Program (STIP) to incorporate the Ozarks Transportation Organization's (OTO) modification of their FY 2015- 2018 Transportation Improvement Program (TIP), as further described in your letter of March 3, 2015. The modification includes the addition of 12 new local public agency (LPA) sponsored highway projects to FY2015.

The OTO Board of Directors approved the TIP on February 19, 2015. The Missouri governor approved the OTO FY2012-2015 TIP on March 3, 2015.

In accordance with 23 CFR 450.218(b), we have determined that this STIP amendment is based on a transportation planning process that substantially meets the requirements of 23 U.S.C 134 and 135, 49 U.S.C. 5303 and 5304 and 23 CFR 450 Subparts A, B, and C. Based on our review, this STIP amendment request is approved.

If you have any questions, please contact Mr. Brad McMahon at FHWA (573) 638-2609.

Sincerely,

For: Kevin Ward, P.E.
Division Administrator
Federal Highway Administration

cc: Sara Edwards, OTO
Shelia Schmitt, City Utilities
Greg Burris, Missouri State University
Machelle Watkins, MoDOT
Eva Voss, MoDOT
Frank Miller, MoDOT Southwest District
Sharon Monroe, MoDOT
Mark Bechtel, FTA Region VII

Missouri Department of Transportation

David B. Nichols, Director

573.751.2551
Fax: 573.751.6555
1.888.ASK MODOT (275.6636)

March 3, 2015

Mr. Kevin Ward
Regional Administrator
Federal Highway Administration
3220 West Edgewood, Suite H
Jefferson City, MO 65109

Dear Mr. Ward:

SUBJECT: Springfield Metropolitan Area
FY 2015-2018 Transportation Improvement Program
Ozarks Transportation Organization
Approval to Incorporate TIP Amendment #3 into FY 2015-2019 STIP

As required by the 2012 Moving Ahead for Progress in the 21st Century Act, MAP-21, MoDOT received approval from Governor Nixon for a TIP amendment in the Springfield metropolitan area that includes the addition of 12 locally sponsored projects.

Enclosed is a copy of the Governor's approval letter and supporting documentation. The Ozarks Transportation Organization Board of Directors approved the TIP amendment on February 19, 2015. All public involvement considerations were met and fiscal constraint has been ensured.

We request approval of incorporating this TIP amendment into the FY 2015-2019 State Transportation Improvement Program (STIP) at your earliest convenience. TIP projects and priorities are identified with the assistance of our planning partners using MoDOT's award-winning Planning Framework process. More information about the Planning Framework may be found at http://www.modot.mo.gov/plansandprojects/planning_projects/PlanningFramework.

Sincerely,



Eva Voss
Sr. Transportation Planner

ev

J:\URBAN\OTO - Springfield\FY 2015\TIP Amendments\TIP Amendment 3\MoDOT letter to ONEDOT.docx

Enclosure

Copies: Mr. Brad McMahon-FHWA Ms. Sara Fields-OTO
 Mr. Frank Miller-SW Ms. Natasha Longpine-OTO



Our mission is to provide a world-class transportation experience that delights our customers and promotes a prosperous Missouri.

www.modot.org

Missouri Department of Transportation
David B. Nichols, Director

573.751.2551
Fax: 573.751.6555
1.888.ASK MODOT (275.6636)

February 23, 2015

The Honorable Jeremiah W. (Jay) Nixon
Governor of Missouri
State Capitol
Jefferson City, MO 65101

Dear Governor Nixon:

On February 19, 2015, the Ozarks Transportation Organization (OTO) Board of Directors approved an amendment to the FY 2015-2018 Transportation Improvement Plan (TIP) for the Springfield metropolitan area. The TIP amendment covers the addition of 12 locally sponsored projects. MoDOT is satisfied the federal requirements have been met in the development of this TIP amendment, including the opportunity for the public to comment on projects. No comments were received.

Enclosed is a copy of the TIP amendment for your review. We request approval of this action at your earliest convenience, so project authorization can proceed in the Springfield metropolitan area.

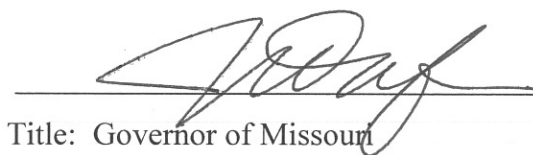
Sincerely,



David B. Nichols, P.E.
Director

Enclosure

Approved:


Title: Governor of Missouri

Date: March 3, 2015



Our mission is to provide a world-class transportation experience that delights our customers and promotes a prosperous Missouri.

www.modot.org



OZARKS TRANSPORTATION ORGANIZATION
A METROPOLITAN PLANNING ORGANIZATION

205 PARK CENTRAL EAST, SUITE 205 SPRINGFIELD, MO 65806 417-865-3042 [p] 417-862-6013 [f]

23 February 2015

Ms. Eva Voss
Transportation Planning
Missouri Department of Transportation
P. O. Box 270
Jefferson City, Missouri 65102

Dear Ms. Voss:

We respectfully request the approval of the FY 2015-2018 Ozarks Transportation Organization Transportation Improvement Program (TIP) Amendment Number Three. The Board of Directors adopted this amendment on February 19, 2015. The adoption included demonstration of fiscal constraint as required by federal regulations. Public comment was taken in accordance with federal law and in accordance with the OTO Public Involvement Policy and no public comment was received. This amendment includes the following twelve (12) changes. A description and additional TIP information is included with this letter. We do request a prompt approval, as that would allow the Transportation Alternative Program Projects to get underway with this year's construction season.

- Finley River Park Connections (EN1503)
- Hartley Road Sidewalks (EN1504)
- McGuffey Park Connecting Sidewalks (EN1505)
- Republic Route 174 Multi-Purpose Trail (EN1506)
- South Dry Sac Greenway Trail Connections (EN1507)
- College and Grant Sidewalks (EN1508)
- Springfield Main Sidewalks and Cycle Track (EN1509)
- Strafford Sidewalks on Madison, Jefferson, and Pine (EN1510)
- Strafford Schools Pine and McCabe Sidewalks (EN1511)
- Willard Schools (EN1512)
- Transportation Planning Street Assessment (RP1501)
- Main Street – Aldersgate to Tracker (NX0601)

Please find enclosed the requested TIP amendment. Please let me know if you need any other information.

Sincerely,

Natasha L. Longpine, AICP
Principal Planner

Enclosure: TIP Approval Packet



Amendment Number Three to the FY 2015-2018 Transportation Improvement Program

Ozarks Transportation Organization (Springfield, MO Area MPO)

AGENDA DESCRIPTION:

There are twelve items included as part of Amendment Number Three to the FY 2015-2018 Transportation Improvement Program. Ten items include those projects recommended by the Transportation Alternatives Program subcommittee. The remaining two were requested by Nixa and the City of Republic.

1. ***New*** Finley River Park Connections (EN1503)
Sidewalk connection between Finley River Park and Neil Grubagh Park, with \$122,966 in TAP funding and \$30,742 in local. Ozark has requested to add \$14,808 total to their application to include a solar powered crosswalk system for Riverside Road.
2. ***New*** Hartley Road Sidewalks (EN1504)
Sidewalk on the north side of East Hartley Road from S. 18th to Ozark East Elementary, with \$141,635 in TAP funding and \$35,409 in local.
3. ***New*** McGuffey Park Connecting Sidewalks (EN1505)
Sidewalk along three streets in the McGuffey Park Subdivision to connect to Ozark Upper Elementary, with \$40,034 in TAP funding and \$10,059 in local.
4. ***New*** Republic Route 174 Multi-Purpose Trail (EN1506)
Asphalt multi-use path on the north side of Route 174 between Main and Lindsey, with \$250,000 in TAP funding and \$141,176 in local.
5. ***New*** South Dry Sac Greenway Trail Connections (EN1507)
Missing connections on South Dry Sac Trail between Fulbright and David C. Murray Park with \$192,680 in TAP funding and \$48,170 in local.
6. ***New*** College and Grant Sidewalks (EN1508)
College Street Phase III, which includes sidewalk improvements on Grant and on College, with \$250,000 in TAP funding and \$179,000 in local.
7. ***New*** Springfield Main Sidewalks and Cycle Track (EN1509)
Sidewalk on the east and west sides of Main Avenue and a separate bicycle track on the west side of Main Avenue from College to just north of Olive, with \$250,000 in TAP funding and \$280,000 in local.
8. ***New*** Strafford Sidewalks on Madison, Jefferson, and Pine (EN1510)
New and reconstructed sidewalk in downtown Strafford on Madison, Jefferson, and Pine Streets, with \$250,000 in TAP funding and \$62,500 in local.

9. ***New*** Strafford Schools Pine and McCabe Sidewalks (EN1511)
New sidewalk constructed on Pine and McCabe Streets in downtown Strafford the Strafford Schools complex, with \$160,000 in TAP funding and \$40,000 in local.
10. ***New*** Willard Schools (EN1512)
Sidewalks on the south side of Kime from the intersection of Miller Road to the east driveway of Willard East Elementary, with \$133,080 in TAP funding and \$33,270 in local.
11. ***New*** Transportation Planning Street Assessment (RP1501)
Street inventory and conditions assessment throughout the City of Republic, with \$40,000 in STP-Urban and \$10,000 in local.
12. Main Street – Aldersgate to Tracker (NX0601)
Complete designed improvements to Main Street from Tracker Road to Aldersgate Drive, including Tracker Road intersection improvements and signalization. Reprogramming of funds to FY 2015 for construction, with \$949,612 in STP-Urban, and \$1,188,388 in local.

TRANSPORTATION ALTERNATIVES PROGRAM SUBCOMMITTEE RECOMMENDATION:

At its January 7, 2015 meeting, the TAP Subcommittee voted unanimously to recommend these 10 projects for funding. Projects were initially solicited for FY 2014 and FY 2015 funding, but upon further discussion, the subcommittee felt it appropriate to award FY 2016 funding as well. This allowed a greater number of projects to move forward with funding and ensured these funds were used in the OTO area.

TECHNICAL PLANNING COMMITTEE RECOMMENDATION:

A member of the Technical Planning Committee made the following motion, “Move to recommend that the Board of Directors approve Amendment 3 to the FY 2015-2018 Transportation Improvement Program, including the allocation of FYs 2014, 2015, and 2016 TAP funding.”

Since the January TPC meeting, MoDOT has requested to remove a High Friction Surface Treatment project in Christian County, which will be revisited as they develop next year’s STIP. The TPC has been informed of this change.

BOARD OF DIRECTORS ACTION TAKEN:

The following motion was approved unanimously by the Board of Directors:

“Move to approve Amendment 3 to the FY 2015-2018 Transportation Improvement Program, including the award of FYs 2014, 2015, and 2016 Transportation Alternative Program funding.”

TIP Number	Applicant	Project	Federal \$	% Federal Funds	Funded
EN1503	Ozark	Finley River Park	\$ 122,966.00	80.00%	\$ 122,966.00
EN1504	Ozark	Hartley Road	\$ 141,635.40	80.00%	\$ 141,635.40
EN1505	Ozark	McGuffey Connections	\$ 40,034.00	80.00%	\$ 40,034.00
EN1506	Republic	Route 174	\$ 250,000.00	63.91%	\$ 250,000.00
EN1507	Spfd-GC Parks	South Dry Sac	\$ 192,680.00	80.00%	\$ 192,680.00
EN1508	Springfield	College III	\$ 250,000.00	58.28%	\$ 250,000.00
EN1509	Springfield	Main	\$ 250,000.00	47.17%	\$ 250,000.00
EN1510	Strafford	Madison/Jefferson/Pine	\$ 250,000.00	80.00%	\$ 250,000.00
EN1511	Strafford PS	Pine/McCabe	\$ 160,000.00	80.00%	\$ 160,000.00
EN1512	Willard PS	Kime Sidewalks	\$ 133,080.00	80.00%	\$ 133,080.00
					\$ (1,790,395.40)

Est. TOTAL FUNDING AVAILABLE 2014-2015 \$ 1,185,239 \$ 6,843.60

OR

Est. TOTAL FUNDING AVAILABLE 2014-2016 \$ 1,797,239



Transportation Improvement Program - FY 2015-2018

Project Detail by Section and Project Number with Map

D) Bicycle & Pedestrian Section

TIP # EN1503 FINLEY RIVER PARK CONNECTION

Route North 4th and East Parkside

From Neil Grubagh Park

To Finley River Park

Location/Agency City of Ozark

Federal Agency FHWA

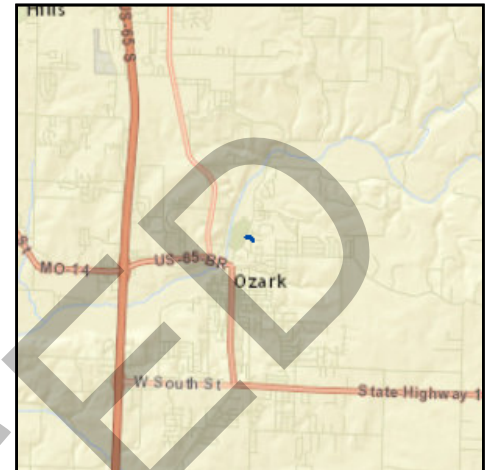
Responsible Agency City of Ozark

Federal Funding Category TAP

MoDOT Funding Category N/A

AC Year of Conv.

STIP #



Project Description

Sidewalk connection between Finley River Park and Neil Grubagh Park, including crosswalks and curb ramps.

Fund Code	Source	Phase	FY2015	FY2016	FY2017	FY2018	Total
FHWA (TAP)	Federal	ENG	\$37,040	\$0	\$0	\$0	\$37,040
LOCAL	Local	ENG	\$9,260	\$0	\$0	\$0	\$9,260
FHWA (TAP)	Federal	CON	\$85,926	\$0	\$0	\$0	\$85,926
LOCAL	Local	CON	\$21,482	\$0	\$0	\$0	\$21,482
Totals			\$153,708	\$0	\$0	\$0	\$153,708

Notes

Source of Local Funds: Ozark School District and City of Ozark general fund.

Prior Cost	\$0
Future Cost	\$0
Total Cost	\$153,708



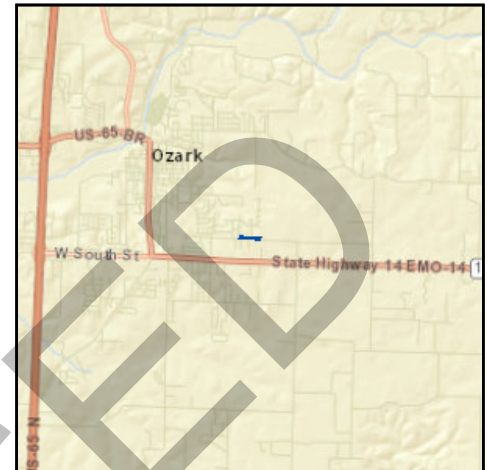
Transportation Improvement Program - FY 2015-2018

Project Detail by Section and Project Number with Map

D) Bicycle & Pedestrian Section

TIP # EN1504 HARTLEY ROAD SIDEWALKS

Route East Hartley Road
From South 18th Street
To Ozark East Elementary
Location/Agency City of Ozark
Federal Agency FHWA
Responsible Agency City of Ozark
Federal Funding Category TAP
MoDOT Funding Category N/A
AC Year of Conv.
STIP #



Project Description

Sidewalk on the north side of East Hartley Road from South 18th Street to Ozark East Elementary, including ramps and crosswalks.

Fund Code	Source	Phase	FY2015	FY2016	FY2017	FY2018	Total
FHWA (TAP)	Federal	ENG	\$45,611	\$0	\$0	\$0	\$45,611
LOCAL	Local	ENG	\$11,403	\$0	\$0	\$0	\$11,403
FHWA (TAP)	Federal	CON	\$96,024	\$0	\$0	\$0	\$96,024
LOCAL	Local	CON	\$24,006	\$0	\$0	\$0	\$24,006
Totals			\$177,044	\$0	\$0	\$0	\$177,044

Notes

Source of Local Funds: Ozark School District and City of Ozark general funds.

Prior Cost	\$0
Future Cost	\$0
Total Cost	\$177,044



Transportation Improvement Program - FY 2015-2018

Project Detail by Section and Project Number with Map

D) Bicycle & Pedestrian Section

TIP # EN1505 MCGUFFEY PARK CONNECTION SIDEWALKS

Route W. Ivy Creek Dr., N. 11th St., N. 12th St.

From McGuffey Park Subdivision

To Ozark Upper Elementary

Location/Agency City of Ozark

Federal Agency FHWA

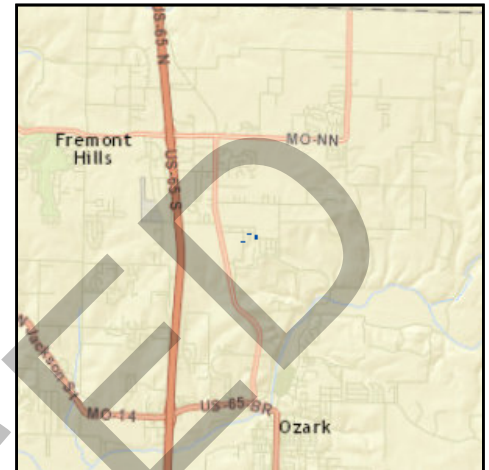
Responsible Agency City of Ozark

Federal Funding Category TAP

MoDOT Funding Category N/A

AC Year of Conv.

STIP #



Project Description

Sidewalk along three streets in the McGuffey Park Subdivision to create an uninterrupted route to Ozark Upper Elementary School, including West Ivy Creek Drive, North 11th Street, and North 12th Street.

Fund Code	Source	Phase	FY2015	FY2016	FY2017	FY2018	Total
FHWA (TAP)	Federal	ENG	\$18,394	\$0	\$0	\$0	\$18,394
LOCAL	Local	ENG	\$4,599	\$0	\$0	\$0	\$4,599
FHWA (TAP)	Federal	CON	\$21,640	\$0	\$0	\$0	\$21,640
LOCAL	Local	CON	\$5,410	\$0	\$0	\$0	\$5,410
Totals			\$50,043	\$0	\$0	\$0	\$50,043

Notes

Source of Local Funds: Ozark School District and City of Ozark general fund.

Prior Cost	\$0
Future Cost	\$0
Total Cost	\$50,043



Transportation Improvement Program - FY 2015-2018

Project Detail by Section and Project Number with Map

D) Bicycle & Pedestrian Section

TIP # EN1506 **ROUTE 174 MULTI-USE TRAIL PHASE I**

Route Route 174

From Main

To Lindsey

Location/Agency City of Republic

Federal Agency FHWA

Responsible Agency City of Republic

Federal Funding Category TAP

MoDOT Funding Category N/A

AC Year of Conv.

STIP #



Project Description

Asphalt path on the north side of Route 174 between Main and Lindsey.

Fund Code	Source	Phase	FY2015	FY2016	FY2017	FY2018	Total
FHWA (TAP)	Federal	ENG	\$24,072	\$0	\$0	\$0	\$24,072
LOCAL	Local	ENG	\$66,199	\$0	\$0	\$0	\$66,199
LOCAL	Local	ROW	\$10,323	\$0	\$0	\$0	\$10,323
FHWA (TAP)	Federal	CON	\$225,928	\$0	\$0	\$0	\$225,928
LOCAL	Local	CON	\$64,654	\$0	\$0	\$0	\$64,654
Totals			\$391,176	\$0	\$0	\$0	\$391,176

Notes

Source of Local Funds: City of Republic 1/2-cent Transportation Sales Tax and other local transportation revenue.

Prior Cost	\$0
Future Cost	\$0
Total Cost	\$391,176



Transportation Improvement Program - FY 2015-2018

Project Detail by Section and Project Number with Map

D) Bicycle & Pedestrian Section

TIP # EN1507 SOUTH DRY SAC TRAIL CONNECTIONS

Route South Dry Sac Trail

From Fulbright

To David C. Murray Park

Location/Agency Greene County

Federal Agency FHWA

Responsible Agency Springfield-Greene County Parks

Federal Funding Category TAP

MoDOT Funding Category N/A

AC Year of Conv.

STIP #



Project Description

Missing connections on South Dry Sac Trail between Fulbright and David C. Murray Park.

Fund Code	Source	Phase	FY2015	FY2016	FY2017	FY2018	Total
FHWA (TAP)	Federal	ENG	\$14,400	\$0	\$0	\$0	\$14,400
LOCAL	Local	ENG	\$3,600	\$0	\$0	\$0	\$3,600
FHWA (TAP)	Federal	CON	\$178,280	\$0	\$0	\$0	\$178,280
LOCAL	Local	CON	\$44,570	\$0	\$0	\$0	\$44,570
Totals			\$240,850	\$0	\$0	\$0	\$240,850

Notes

Source of Local Funding: Greene County, Springfield-Greene County Park Board, Ozark Greenways.

Prior Cost	\$0
Future Cost	\$0
Total Cost	\$240,850



Transportation Improvement Program - FY 2015-2018

Project Detail by Section and Project Number with Map

D) Bicycle & Pedestrian Section

TIP # EN1508 **COLLEGE STREET PHASE III**

Route Grant and College

From Grant Avenue

To College Street

Location/Agency City of Springfield

Federal Agency FHWA

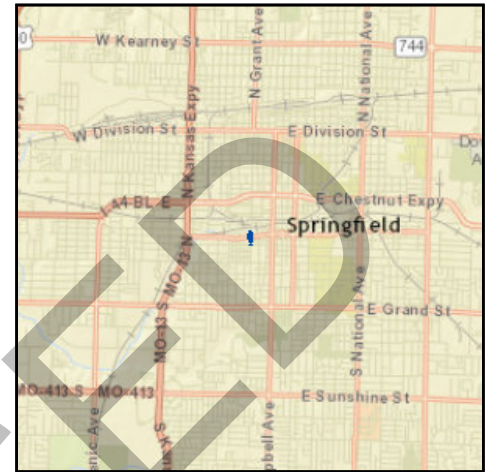
Responsible Agency City of Springfield

Federal Funding Category TAP

MoDOT Funding Category N/A

AC Year of Conv.

STIP #



Project Description

College Street Phase III - Sidewalk improvements on the east and west sides of Grant from Olive to Walnut, and College at Grant, including the intersection.

Fund Code	Source	Phase	FY2015	FY2016	FY2017	FY2018	Total
FHWA (TAP)	Federal	CON	\$250,000	\$0	\$0	\$0	\$250,000
LOCAL	Local	CON	\$179,000	\$0	\$0	\$0	\$179,000
Totals			\$429,000	\$0	\$0	\$0	\$429,000

Notes

Source of Local Funds: City of Springfield 1/4-cent Capital Improvement Program Sales Tax.

Prior Cost	\$0
Future Cost	\$0
Total Cost	\$429,000



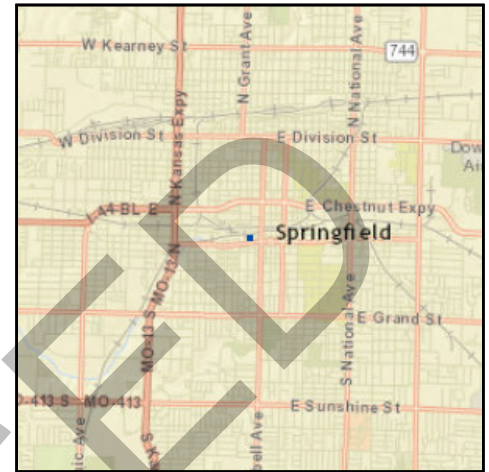
Transportation Improvement Program - FY 2015-2018

Project Detail by Section and Project Number with Map

D) Bicycle & Pedestrian Section

TIP # EN1509 MAIN AVENUE SIDEWALKS AND BICYCLE TRACK

Route Main Avenue
From College Street
To Olive Street
Location/Agency City of Springfield
Federal Agency FHWA
Responsible Agency City of Springfield
Federal Funding Category TAP
MoDOT Funding Category N/A
AC Year of Conv.
STIP #



Project Description

Sidewalk on the east and west sides of Main Avenue and a separate bicycle track on the west side of Main Avenue from College Street to just north of Olive.

Fund Code	Source	Phase	FY2015	FY2016	FY2017	FY2018	Total
FHWA (TAP)	Federal	CON	\$250,000	\$0	\$0	\$0	\$250,000
LOCAL	Local	CON	\$280,000	\$0	\$0	\$0	\$280,000
Totals			\$530,000	\$0	\$0	\$0	\$530,000

Notes

Source of Local Funds: City Utilities and City of Springfield 1/4-cent Capital Improvement Program Sales Tax.

Prior Cost	\$0
Future Cost	\$0
Total Cost	\$530,000



Transportation Improvement Program - FY 2015-2018

Project Detail by Section and Project Number with Map

D) Bicycle & Pedestrian Section

TIP # EN1510 STRAFFORD SIDEWALKS ON MADISON, JEFFERSON, AND PINE

Route Madison, Washington, and Pine

From Various

To Various

Location/Agency City of Strafford

Federal Agency FHWA

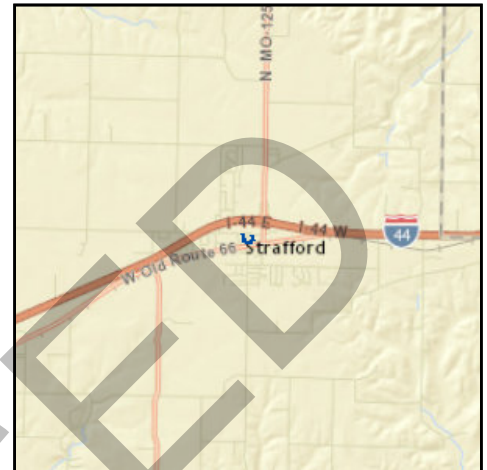
Responsible Agency City of Strafford

Federal Funding Category TAP

MoDOT Funding Category N/A

AC Year of Conv.

STIP #



Project Description

New and Reconstructed Sidewalk in downtown Strafford on Madison, Jefferson, and Pine Streets.

Fund Code	Source	Phase	FY2015	FY2016	FY2017	FY2018	Total
FHWA (TAP)	Federal	ENG	\$56,194	\$0	\$0	\$0	\$56,194
LOCAL	Local	ENG	\$14,048	\$0	\$0	\$0	\$14,048
FHWA (TAP)	Federal	CON	\$193,806	\$0	\$0	\$0	\$193,806
LOCAL	Local	CON	\$48,452	\$0	\$0	\$0	\$48,452
Totals			\$312,500	\$0	\$0	\$0	\$312,500

Notes

Source of Local Funds: City of Strafford and Strafford Schools.

Prior Cost	\$0
Future Cost	\$0
Total Cost	\$312,500



Transportation Improvement Program - FY 2015-2018

Project Detail by Section and Project Number with Map

D) Bicycle & Pedestrian Section

TIP # EN1511 STRAFFORD SIDEWALKS ON MCABE AND PINE

Route Pine and McCabe

From Various

To Various

Location/Agency City of Strafford

Federal Agency FHWA

Responsible Agency Strafford Public Schools

Federal Funding Category TAP

MoDOT Funding Category N/A

AC Year of Conv.

STIP #



Project Description

New sidewalk constructed on Pine and McCabe Streets in downtown Strafford to connect downtown Strafford and the existing Strafford Schools Campus to the new Elementary School under construction.

Fund Code	Source	Phase	FY2015	FY2016	FY2017	FY2018	Total
FHWA (TAP)	Federal	ENG	\$55,425	\$0	\$0	\$0	\$55,425
LOCAL	Local	ENG	\$13,856	\$0	\$0	\$0	\$13,856
FHWA (TAP)	Federal	CON	\$104,575	\$0	\$0	\$0	\$104,575
LOCAL	Local	CON	\$26,144	\$0	\$0	\$0	\$26,144
Totals			\$200,000	\$0	\$0	\$0	\$200,000

Notes

Source of Local Funds: Strafford School District and City of Strafford.

Prior Cost	\$0
Future Cost	\$0
Total Cost	\$200,000



Transportation Improvement Program - FY 2015-2018

Project Detail by Section and Project Number with Map

D) Bicycle & Pedestrian Section

TIP # EN1512 WILLARD SCHOOL SIDEWALKS PHASE I, KIME

Route Kime Street

From Miller Road

To Willard East Elementary

Location/Agency City of Willard

Federal Agency FHWA

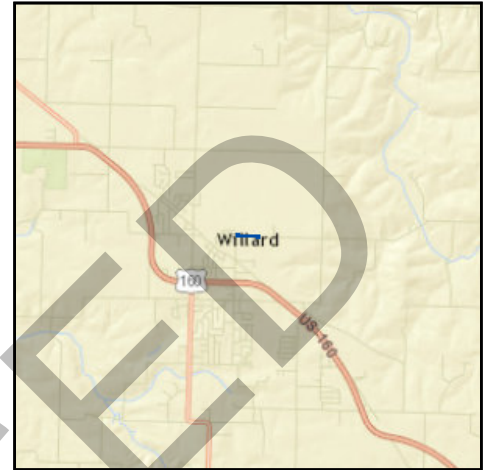
Responsible Agency Willard Public Schools

Federal Funding Category TAP

MoDOT Funding Category N/A

AC Year of Conv.

STIP #



Project Description

Sidewalks on the south side of Kime Street (Missouri Route O) from the intersection of Miller Road to the east driveway of Willard East Elementary.

Fund Code	Source	Phase	FY2015	FY2016	FY2017	FY2018	Total
FHWA (TAP)	Federal	ENG	\$26,614	\$0	\$0	\$0	\$26,614
LOCAL	Local	ENG	\$6,654	\$0	\$0	\$0	\$6,654
FHWA (TAP)	Federal	CON	\$106,466	\$0	\$0	\$0	\$106,466
LOCAL	Local	CON	\$26,616	\$0	\$0	\$0	\$26,616
Totals			\$166,350	\$0	\$0	\$0	\$166,350

Notes

Source of Local Funds: Willard School District Capital Improvement Fund and City of Willard Capital Improvement Fund.

Prior Cost	\$0
Future Cost	\$0
Total Cost	\$166,350



Transportation Improvement Program - FY 2015-2018

Project Detail by Section and Project Number with Map

E) Roadways Section

TIP # RP1501 TRANSPORTATION PLANNING STREET ASSESSMENT

Route Various

From Various

To Various

Location/Agency City of Republic

Federal Agency FHWA

Responsible Agency City of Republic

Federal Funding Category Small Urban

MoDOT Funding Category N/A

AC Year of Conv.

STIP #



Project Description

Street inventory and conditions assessment throughout the City of Republic.

Fund Code	Source	Phase	FY2015	FY2016	FY2017	FY2018	Total
FHWA (STP-U)	Federal	ENG	\$40,000	\$0	\$0	\$0	\$40,000
LOCAL	Local	ENG	\$10,000	\$0	\$0	\$0	\$10,000
Totals			\$50,000	\$0	\$0	\$0	\$50,000

Notes

Source of Local Funds: City of Republic Transportation Sales Tax.

Prior Cost	\$0
Future Cost	\$0
Total Cost	\$50,000



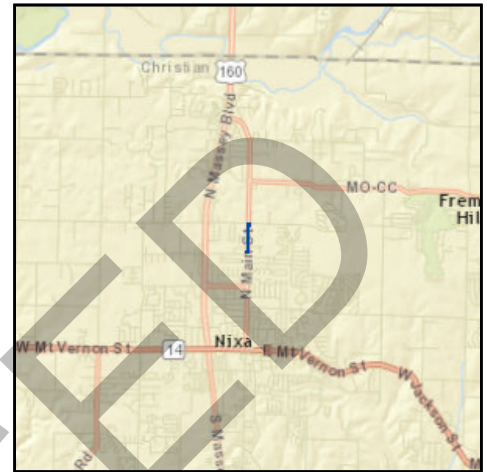
Transportation Improvement Program - FY 2015-2018

Project Detail by Section and Project Number with Map

E) Roadways Section

TIP # NX0601 **MAIN STREET - ALDERSGATE TO TRACKER**

Route Main Street
From Tracker Road
To Aldersgate Drive
Location/Agency City of Nixa
Federal Agency FHWA
Responsible Agency City of Nixa
Federal Funding Category STP-U
MoDOT Funding Category None
AC Year of Conv.
STIP #



Project Description

Acquire right of way and complete designed improvements to Main Street from Tracker Road to Aldersgate Drive; project includes Tracker Road intersection improvements and signalization.

Fund Code	Source	Phase	FY2015	FY2016	FY2017	FY2018	Total
FHWA (STP-U)	Federal	CON	\$949,612	\$0	\$0	\$0	\$949,612
LOCAL	Local	CON	\$1,188,388	\$0	\$0	\$0	\$1,188,388
Totals			\$2,138,000	\$0	\$0	\$0	\$2,138,000

Notes

Source of Local Funds: Nixa local sales tax.

Prior Cost	\$592,000
Future Cost	\$0
Total Cost	\$2,730,000

FINANCIAL SUMMARY

Bicycle & Pedestrian

YEARLY SUMMARY

PROJECT	FHWA (STP)	FHWA (STP-U)	FHWA (TE)	FHWA (TAP)	Local LOCAL	State MoDOT	State MoDOT-AC	TOTAL
FY 2015								
EN1302	\$0	\$0	\$0	\$240,000	\$60,000	\$0	\$0	\$300,000
EN1305	\$0	\$0	\$220,413	\$0	\$179,587	\$0	\$0	\$400,000
EN1306	\$0	\$0	\$320,000	\$0	\$80,000	\$0	\$0	\$400,000
EN1307	\$0	\$0	\$200,000	\$0	\$50,000	\$0	\$0	\$250,000
EN1401	\$0	\$48,300	\$0	\$0	\$12,075	\$0	\$0	\$60,375
EN1502	\$0	\$0	\$0	\$0	\$0	\$194,800	\$779,200	\$974,000
EN1503	\$0	\$0	\$0	\$122,966	\$30,742	\$0	\$0	\$153,708
EN1504	\$0	\$0	\$0	\$141,635	\$35,409	\$0	\$0	\$177,044
EN1505	\$0	\$0	\$0	\$40,034	\$10,009	\$0	\$0	\$50,043
EN1506	\$0	\$0	\$0	\$250,000	\$141,176	\$0	\$0	\$391,176
EN1507	\$0	\$0	\$0	\$192,680	\$48,170	\$0	\$0	\$240,850
EN1508	\$0	\$0	\$0	\$250,000	\$179,000	\$0	\$0	\$429,000
EN1509	\$0	\$0	\$0	\$250,000	\$280,000	\$0	\$0	\$530,000
EN1510	\$0	\$0	\$0	\$250,000	\$62,500	\$0	\$0	\$312,500
EN1511	\$0	\$0	\$0	\$160,000	\$40,000	\$0	\$0	\$200,000
EN1512	\$0	\$0	\$0	\$133,080	\$33,270	\$0	\$0	\$166,350
MO1309	\$0	\$0	\$0	\$0	\$0	\$5,000	\$20,000	\$25,000
SP1412	\$0	\$0	\$0	\$0	\$0	\$118,600	\$474,400	\$593,000
SP1414	\$69,000	\$0	\$175,000	\$0	\$30,000	\$31,000	\$0	\$305,000
SUBTOTAL	\$69,000	\$48,300	\$915,413	\$2,030,395	\$1,271,938	\$349,400	\$1,273,600	\$5,958,046
FY 2016								
EN1601	\$0	\$0	\$192,000	\$0	\$0	\$48,000	\$0	\$240,000
MO1309	\$0	\$0	\$0	\$0	\$0	\$5,000	\$20,000	\$25,000
SUBTOTAL	\$0	\$0	\$192,000	\$0	\$0	\$53,000	\$20,000	\$265,000
FY 2017								
MO1309	\$0	\$0	\$0	\$0	\$0	\$5,000	\$20,000	\$25,000
SUBTOTAL	\$0	\$0	\$0	\$0	\$0	\$5,000	\$20,000	\$25,000
FY 2018								
MO1309	\$0	\$0	\$0	\$0	\$0	\$5,000	\$20,000	\$25,000
SUBTOTAL	\$0	\$0	\$0	\$0	\$0	\$5,000	\$20,000	\$25,000
GRAND TOTAL	\$69,000	\$48,300	\$1,107,413	\$2,030,395	\$1,271,938	\$412,400	\$1,333,600	\$6,273,046

FINANCIAL CONSTRAINT

Bicycle & Pedestrian

	STP	STP-U	TE	TAP	Local	MoDOT	MoDOT-AC	TOTAL
PRIOR YEAR								
Balance	\$ -	\$ -	\$ -	\$837,863	\$ -	\$ -	\$ -	\$837,863
FY 2015								
Funds Anticipated	\$69,000	\$48,300	\$915,413	\$1,199,376	\$1,271,938	\$349,400	\$1,273,600	\$5,127,027
Funds Programmed	(\$69,000.00)	(\$48,300.00)	(\$915,413.00)	(\$2,030,395.00)	(\$1,271,938.00)	(\$349,400.00)	(\$1,273,600.00)	(\$5,958,046.00)
Running Balance	\$0		\$0	\$6,844	\$0	\$0	\$0	\$6,844
FY 2016								
Funds Anticipated	\$ -		\$192,000	\$0	\$ -	\$53,000	\$20,000	\$265,000
Funds Programmed	\$ -		(\$192,000.00)	\$ -	\$ -	(\$53,000.00)	(\$20,000.00)	(\$265,000.00)
Running Balance	\$0		\$0	\$6,844	\$0	\$0	\$0	\$6,844
FY 2017								
Funds Anticipated	\$ -		\$ -	\$612,826	\$ -	\$5,000	\$20,000	\$637,826
Funds Programmed	\$ -		\$ -	\$ -	\$ -	(\$5,000.00)	(\$20,000.00)	(\$25,000.00)
Running Balance	\$0		\$0	\$619,670	\$0	\$0	\$0	\$619,670
FY 2018								
Funds Anticipated	\$ -		\$ -	\$612,826	\$ -	\$5,000	\$20,000	\$637,826
Funds Programmed	\$ -		\$ -	\$ -	\$ -	(\$5,000.00)	(\$20,000.00)	(\$25,000.00)
Running Balance	\$0		\$0	\$1,232,496	\$0	\$0	\$0	\$1,232,496

FINANCIAL SUMMARY

Roadways

YEARLY SUMMARY

	Federal							Local	State			Other	
PROJECT	FHWA (STP-U)	FHWA (SAFETY)	FHWA (BRIDGE)	FHWA (STP)	FHWA (130)	FHWA (HPP)	FHWA (BRO)	LOCAL	MoDOT	MoDOT-GCSA	MoDOT-AC	OTHER	TOTAL
FY 2015													
BA1101	\$8,000	\$0	\$0	\$0	\$0	\$0	\$0	\$2,000	\$0	\$0	\$0	\$0	\$10,000
CC0901	\$0	\$0	\$0	\$0	\$0	\$0	\$0	\$0	\$400	\$0	\$1,600	\$0	\$2,000
CC1102	\$0	\$0	\$0	\$0	\$0	\$0	\$0	\$0	\$400	\$0	\$1,600	\$0	\$2,000
CC1110	\$2,072,000	\$0	\$0	\$0	\$0	\$0	\$0	\$1,557,044	\$97,600	\$0	\$3,893,356	\$0	\$7,620,000
GR1010	\$0	\$911,000	\$0	\$0	\$0	\$0	\$0	\$0	\$2,369,000	\$0	\$9,071,000	\$0	\$12,351,000
GR1104	\$0	\$0	\$0	\$0	\$160,000	\$0	\$0	\$0	\$0	\$40,000	\$0	\$0	\$200,000
GR1213	\$0	\$0	\$0	\$0	\$0	\$0	\$1,133,600	\$283,400	\$0	\$0	\$0	\$0	\$1,417,000
GR1312	\$0	\$0	\$0	\$0	\$0	\$0	\$371,200	\$92,800	\$0	\$0	\$0	\$0	\$464,000
GR1402	\$0	\$0	\$0	\$168,800	\$1,049,967	\$0	\$0	\$0	\$105,200	\$1,048,968	\$0	\$126,065	\$2,499,000
GR1403	\$0	\$0	\$0	\$0	\$0	\$0	\$0	\$0	\$400	\$0	\$1,600	\$0	\$2,000
GR1408	\$0	\$0	\$0	\$0	\$0	\$0	\$0	\$0	\$400	\$0	\$1,600	\$0	\$2,000
GR1501	\$1,200,000	\$0	\$0	\$0	\$0	\$0	\$0	\$300,000	\$0	\$0	\$0	\$0	\$1,500,000
GR1502	\$960,000	\$0	\$0	\$0	\$0	\$0	\$0	\$240,000	\$0	\$0	\$0	\$0	\$1,200,000
MO1105	\$0	\$0	\$0	\$0	\$0	\$0	\$0	\$0	\$284,000	\$0	\$0	\$0	\$284,000
MO1201	\$0	\$1,800	\$0	\$0	\$0	\$0	\$0	\$0	\$200	\$0	\$0	\$0	\$2,000
MO1404	\$0	\$0	\$0	\$0	\$0	\$0	\$0	\$0	\$400	\$0	\$1,600	\$0	\$2,000
MO1405	\$0	\$0	\$0	\$0	\$0	\$0	\$0	\$0	\$25,000	\$0	\$0	\$0	\$25,000
MO1408	\$0	\$0	\$0	\$0	\$0	\$0	\$0	\$0	\$196,000	\$0	\$784,000	\$0	\$980,000
MO1409	\$0	\$0	\$0	\$0	\$0	\$0	\$0	\$0	\$330,800	\$0	\$1,323,200	\$0	\$1,654,000
MO1501	\$0	\$32,000	\$0	\$0	\$0	\$0	\$0	\$0	\$0	\$0	\$0	\$0	\$32,000
MO1503	\$276,000	\$0	\$0	\$0	\$0	\$0	\$0	\$69,000	\$134,600	\$0	\$538,400	\$0	\$1,018,000
MO1504	\$0	\$0	\$0	\$0	\$0	\$0	\$0	\$0	\$21,600	\$0	\$194,400	\$0	\$216,000
MO1505	\$0	\$0	\$0	\$0	\$0	\$0	\$0	\$0	\$37,800	\$0	\$151,200	\$0	\$189,000
MO1601	\$0	\$0	\$0	\$0	\$0	\$0	\$0	\$0	\$2,000	\$0	\$0	\$0	\$2,000
MO1604	\$0	\$55,800	\$0	\$0	\$0	\$0	\$0	\$0	\$6,200	\$0	\$0	\$0	\$62,000
MO1605	\$0	\$0	\$0	\$0	\$0	\$0	\$0	\$0	\$400	\$0	\$1,600	\$0	\$2,000
MO1705	\$0	\$0	\$0	\$0	\$0	\$0	\$0	\$0	\$400	\$0	\$1,600	\$0	\$2,000
NX0601	\$949,612	\$0	\$0	\$0	\$0	\$0	\$0	\$1,188,388	\$0	\$0	\$0	\$0	\$2,138,000
NX0906	\$0	\$0	\$0	\$0	\$0	\$0	\$0	\$0	\$10,800	\$0	\$43,200	\$0	\$54,000
OK1401	\$0	\$0	\$0	\$0	\$0	\$0	\$0	\$0	\$400	\$0	\$1,600	\$0	\$2,000
RG0901	\$0	\$0	\$0	\$0	\$0	\$0	\$0	\$0	\$400	\$0	\$1,600	\$0	\$2,000
RG1201	\$0	\$0	\$0	\$0	\$0	\$0	\$0	\$0	\$400	\$0	\$1,600	\$0	\$2,000
RP1401	\$0	\$0	\$0	\$0	\$0	\$0	\$0	\$0	\$400	\$0	\$1,600	\$0	\$2,000
RP1501	\$40,000	\$0	\$0	\$0	\$0	\$0	\$0	\$10,000	\$0	\$0	\$0	\$0	\$50,000
SP1018	\$0	\$0	\$248,000	\$0	\$0	\$0	\$0	\$0	\$62,000	\$0	\$0	\$0	\$310,000
SP1106	\$0	\$0	\$0	\$0	\$0	\$0	\$0	\$0	\$1,000	\$0	\$4,000	\$0	\$5,000
SP1109	\$1,966,300	\$0	\$0	\$0	\$2,250,000	\$0	\$0	\$0	\$1,433,140	\$750,000	\$4,016,560	\$0	\$10,416,000
SP1112	\$0	\$0	\$0	\$0	\$0	\$0	\$0	\$0	\$400	\$0	\$1,600	\$0	\$2,000
SP1114	\$0	\$0	\$0	\$0	\$160,000	\$0	\$0	\$0	\$0	\$40,000	\$0	\$0	\$200,000
SP1120	\$0	\$0	\$0	\$0	\$4,000	\$0	\$0	\$0	\$0	\$1,000	\$0	\$0	\$5,000
SP1204	\$0	\$0	\$0	\$0	\$0	\$0	\$0	\$0	\$400	\$0	\$1,600	\$0	\$2,000
SP1209	\$0	\$0	\$0	\$499,915	\$0	\$0	\$0	\$124,979	\$0	\$0	\$0	\$0	\$624,894
SP1315	\$0	\$0	\$0	\$0	\$0	\$0	\$0	\$0	\$88,200	\$0	\$352,800	\$0	\$441,000
SP1316	\$0	\$0	\$0	\$0	\$0	\$0	\$0	\$0	\$391,800	\$0	\$1,567,200	\$0	\$1,959,000
SP1318	\$0	\$0	\$0	\$0	\$0	\$0	\$0	\$0	\$233,000	\$0	\$932,000	\$0	\$1,165,000
SP1321	\$10,000	\$0	\$0	\$0	\$0	\$0	\$0	\$3,984	\$0	\$0	\$0	\$0	\$13,984
SP1323	\$47,000	\$0	\$0	\$0	\$0	\$0	\$0	\$10,000	\$32,600	\$0	\$126,400	\$0	\$216,000

FY 2015 continued on next page

FINANCIAL SUMMARY

Roadways

YEARLY SUMMARY

	Federal							Local	State			Other	
PROJECT	FHWA (STP-U)	FHWA (SAFETY)	FHWA (BRIDGE)	FHWA (STP)	FHWA (130)	FHWA (HPP)	FHWA (BRO)	LOCAL	MoDOT	MoDOT-GCSA	MoDOT-AC	OTHER	TOTAL
FY 2015 continued													
SP1401	\$0	\$0	\$0	\$0	\$0	\$0	\$0	\$0	\$1,000	\$0	\$4,000	\$0	\$5,000
SP1403	\$0	\$0	\$0	\$0	\$0	\$0	\$0	\$0	\$120,200	\$0	\$480,800	\$0	\$601,000
SP1405	\$0	\$0	\$0	\$0	\$0	\$0	\$0	\$0	\$400	\$0	\$1,600	\$0	\$2,000
SP1408	\$0	\$0	\$0	\$0	\$0	\$0	\$0	\$0	\$255,400	\$0	\$1,021,600	\$0	\$1,277,000
SP1409	\$0	\$0	\$0	\$0	\$0	\$0	\$0	\$0	\$7,300	\$0	\$65,700	\$0	\$73,000
SP1410	\$0	\$0	\$0	\$0	\$0	\$0	\$0	\$0	\$40,000	\$0	\$160,000	\$0	\$200,000
SP1411	\$0	\$0	\$0	\$0	\$0	\$0	\$0	\$0	\$109,600	\$0	\$438,400	\$0	\$548,000
SP1415	\$0	\$0	\$0	\$0	\$0	\$0	\$0	\$0	\$22,800	\$0	\$91,200	\$0	\$114,000
SP1416	\$0	\$0	\$0	\$0	\$0	\$0	\$0	\$0	\$400	\$0	\$1,600	\$0	\$2,000
SP1501	\$0	\$0	\$0	\$0	\$0	\$0	\$0	\$0	\$75,200	\$0	\$300,800	\$0	\$376,000
WI1301	\$0	\$0	\$0	\$0	\$0	\$0	\$0	\$0	\$1,000	\$0	\$4,000	\$0	\$5,000
WI1501	\$40,000	\$0	\$0	\$0	\$0	\$0	\$0	\$10,000	\$0	\$0	\$0	\$0	\$50,000
SUBTOTAL	\$7,568,912	\$1,000,600	\$248,000	\$668,715	\$3,623,967	\$0	\$1,504,800	\$3,891,595	\$6,501,040	\$1,879,968	\$25,588,216	\$126,065	\$52,601,878
FY 2016													
CC0901	\$0	\$0	\$0	\$0	\$0	\$0	\$0	\$0	\$400	\$0	\$1,600	\$0	\$2,000
CC1102	\$0	\$0	\$0	\$0	\$0	\$0	\$0	\$0	\$400	\$0	\$1,600	\$0	\$2,000
GR1104	\$0	\$0	\$0	\$0	\$128,000	\$0	\$0	\$0	\$0	\$32,000	\$0	\$0	\$160,000
GR1403	\$0	\$0	\$0	\$0	\$0	\$0	\$0	\$0	\$400	\$0	\$1,600	\$0	\$2,000
GR1408	\$0	\$0	\$0	\$0	\$0	\$0	\$0	\$0	\$400	\$0	\$1,600	\$0	\$2,000
GR1501	\$1,200,000	\$0	\$0	\$0	\$0	\$0	\$0	\$300,000	\$0	\$0	\$0	\$0	\$1,500,000
GR1601	\$0	\$0	\$0	\$0	\$0	\$0	\$320,000	\$80,000	\$0	\$0	\$0	\$0	\$400,000
MO1105	\$0	\$0	\$0	\$0	\$0	\$0	\$0	\$0	\$284,000	\$0	\$0	\$0	\$284,000
MO1201	\$0	\$2,700	\$0	\$0	\$0	\$0	\$0	\$0	\$300	\$0	\$0	\$0	\$3,000
MO1404	\$0	\$0	\$0	\$0	\$0	\$0	\$0	\$0	\$4,800	\$0	\$19,200	\$0	\$24,000
MO1601	\$0	\$50,000	\$0	\$0	\$0	\$0	\$0	\$0	\$3,000	\$0	\$0	\$0	\$53,000
MO1603	\$284,000	\$0	\$0	\$0	\$0	\$0	\$0	\$71,000	\$134,600	\$0	\$538,400	\$0	\$1,028,000
MO1604	\$0	\$980,100	\$0	\$0	\$0	\$0	\$0	\$0	\$108,900	\$0	\$0	\$0	\$1,089,000
MO1605	\$0	\$0	\$0	\$0	\$0	\$0	\$0	\$0	\$38,800	\$0	\$155,200	\$0	\$194,000
MO1705	\$0	\$0	\$0	\$0	\$0	\$0	\$0	\$0	\$400	\$0	\$1,600	\$0	\$2,000
NX0906	\$1,307,001	\$0	\$0	\$0	\$0	\$0	\$0	\$326,750	\$362,000	\$0	\$1,448,000	\$0	\$3,443,751
OK1401	\$0	\$0	\$0	\$0	\$0	\$0	\$0	\$0	\$400	\$0	\$1,600	\$0	\$2,000
RG0901	\$0	\$0	\$0	\$0	\$0	\$0	\$0	\$0	\$400	\$0	\$1,600	\$0	\$2,000
RG1201	\$0	\$0	\$0	\$0	\$0	\$0	\$0	\$0	\$1,400	\$0	\$5,600	\$0	\$7,000
RP1401	\$0	\$0	\$0	\$0	\$0	\$0	\$0	\$0	\$41,000	\$0	\$164,000	\$0	\$205,000
SP1018	\$0	\$0	\$4,651,200	\$0	\$0	\$0	\$0	\$0	\$1,162,800	\$0	\$0	\$0	\$5,814,000
SP1106	\$0	\$0	\$0	\$0	\$0	\$0	\$0	\$0	\$400	\$0	\$1,600	\$0	\$2,000
SP1112	\$0	\$0	\$0	\$0	\$0	\$0	\$0	\$0	\$16,000	\$0	\$64,000	\$0	\$80,000
SP1204	\$0	\$0	\$0	\$0	\$0	\$0	\$0	\$0	\$400	\$0	\$1,600	\$0	\$2,000
SP1321	\$10,000	\$0	\$0	\$0	\$0	\$0	\$0	\$3,984	\$0	\$0	\$0	\$0	\$13,984
SP1323	\$681,000	\$0	\$0	\$0	\$0	\$0	\$0	\$172,000	\$156,600	\$0	\$626,400	\$0	\$1,636,000
SP1401	\$0	\$0	\$0	\$0	\$0	\$0	\$0	\$0	\$5,200	\$0	\$20,800	\$0	\$26,000
SP1405	\$0	\$0	\$0	\$0	\$0	\$0	\$0	\$0	\$400	\$0	\$1,600	\$0	\$2,000
SP1409	\$0	\$0	\$0	\$0	\$0	\$0	\$0	\$0	\$996,400	\$0	\$8,967,600	\$0	\$9,964,000
SP1410	\$0	\$0	\$0	\$0	\$0	\$0	\$0	\$0	\$1,833,000	\$0	\$7,332,000	\$0	\$9,165,000
SP1415	\$734,000	\$0	\$0	\$0	\$0	\$0	\$0	\$184,000	\$74,000	\$0	\$298,000	\$0	\$1,290,000
WI1301	\$0	\$0	\$0	\$0	\$0	\$0	\$0	\$0	\$10,000	\$0	\$40,000	\$0	\$50,000
SUBTOTAL	\$4,216,001	\$1,032,800	\$4,651,200	\$0	\$128,000	\$0	\$320,000	\$1,137,734	\$5,236,800	\$32,000	\$19,695,200	\$0	\$36,449,735

FINANCIAL SUMMARY

Roadways

YEARLY SUMMARY

	Federal							Local	State			Other	
PROJECT	FHWA (STP-U)	FHWA (SAFETY)	FHWA (BRIDGE)	FHWA (STP)	FHWA (130)	FHWA (HPP)	FHWA (BRO)	LOCAL	MoDOT	MoDOT-GCSA	MoDOT-AC	OTHER	TOTAL
FY 2017													
CC0901	\$0	\$0	\$0	\$0	\$0	\$0	\$0	\$0	\$400	\$0	\$1,600	\$0	\$2,000
CC1102	\$0	\$0	\$0	\$0	\$0	\$0	\$0	\$0	\$400	\$0	\$1,600	\$0	\$2,000
GR1403	\$0	\$0	\$0	\$0	\$0	\$0	\$0	\$0	\$400	\$0	\$1,600	\$0	\$2,000
MO1105	\$0	\$0	\$0	\$0	\$0	\$0	\$0	\$0	\$284,000	\$0	\$0	\$0	\$284,000
MO1201	\$0	\$80,100	\$0	\$0	\$0	\$0	\$0	\$0	\$8,900	\$0	\$0	\$0	\$89,000
MO1404	\$0	\$0	\$0	\$0	\$0	\$0	\$0	\$0	\$1,115,800	\$0	\$4,463,200	\$0	\$5,579,000
MO1701	\$292,000	\$0	\$0	\$0	\$0	\$0	\$0	\$73,000	\$134,600	\$0	\$538,400	\$0	\$1,038,000
MO1705	\$0	\$0	\$0	\$0	\$0	\$0	\$0	\$0	\$40,000	\$0	\$160,000	\$0	\$200,000
OK1401	\$0	\$0	\$0	\$0	\$0	\$0	\$0	\$0	\$400	\$0	\$1,600	\$0	\$2,000
RG0901	\$0	\$0	\$0	\$0	\$0	\$0	\$0	\$0	\$400	\$0	\$1,600	\$0	\$2,000
RG1201	\$0	\$0	\$0	\$0	\$0	\$0	\$0	\$0	\$67,600	\$0	\$270,400	\$0	\$338,000
SP1106	\$0	\$0	\$0	\$0	\$0	\$0	\$0	\$0	\$400	\$0	\$1,600	\$0	\$2,000
SP1112	\$0	\$0	\$0	\$0	\$0	\$0	\$0	\$0	\$30,000	\$0	\$120,000	\$0	\$150,000
SP1204	\$0	\$0	\$0	\$0	\$0	\$0	\$0	\$0	\$205,200	\$0	\$820,800	\$0	\$1,026,000
SP1401	\$0	\$0	\$0	\$0	\$0	\$0	\$0	\$0	\$91,600	\$0	\$366,400	\$0	\$458,000
SP1405	\$0	\$0	\$0	\$0	\$0	\$0	\$0	\$0	\$400	\$0	\$1,600	\$0	\$2,000
SP1415	\$1,089,292	\$0	\$0	\$0	\$0	\$0	\$0	\$271,823	\$326,777	\$0	\$1,305,108	\$0	\$2,993,000
WI1301	\$0	\$0	\$0	\$0	\$0	\$0	\$0	\$0	\$164,800	\$0	\$659,200	\$0	\$824,000
SUBTOTAL	\$1,381,292	\$80,100	\$0	\$0	\$0	\$0	\$0	\$344,823	\$2,472,077	\$0	\$8,714,708	\$0	\$12,993,000
FY 2018													
CC0901	\$0	\$0	\$0	\$0	\$0	\$0	\$0	\$0	\$400	\$0	\$1,600	\$0	\$2,000
CC1102	\$0	\$0	\$0	\$0	\$0	\$0	\$0	\$0	\$400	\$0	\$1,600	\$0	\$2,000
GR1403	\$0	\$0	\$0	\$0	\$0	\$0	\$0	\$0	\$400	\$0	\$1,600	\$0	\$2,000
MO1105	\$0	\$0	\$0	\$0	\$0	\$0	\$0	\$0	\$284,000	\$0	\$0	\$0	\$284,000
MO1801	\$300,000	\$0	\$0	\$0	\$0	\$0	\$0	\$75,000	\$134,600	\$0	\$538,400	\$0	\$1,048,000
OK1401	\$0	\$0	\$0	\$0	\$0	\$0	\$0	\$0	\$400	\$0	\$1,600	\$0	\$2,000
RG0901	\$0	\$0	\$0	\$0	\$0	\$0	\$0	\$0	\$400	\$0	\$1,600	\$0	\$2,000
SP1106	\$0	\$0	\$0	\$100,000	\$0	\$0	\$0	\$1,179,000	\$313,000	\$0	\$1,252,000	\$0	\$2,844,000
SP1112	\$0	\$0	\$0	\$0	\$0	\$166,134	\$0	\$0	\$792,000	\$0	\$3,001,866	\$0	\$3,960,000
SP1405	\$0	\$0	\$0	\$0	\$0	\$0	\$0	\$0	\$400	\$0	\$1,600	\$0	\$2,000
SUBTOTAL	\$300,000	\$0	\$0	\$100,000	\$0	\$166,134	\$0	\$1,254,000	\$1,526,000	\$0	\$4,801,866	\$0	\$8,148,000
GRAND TOTAL	\$13,466,205	\$2,113,500	\$4,899,200	\$768,715	\$3,751,967	\$166,134	\$1,824,800	\$6,628,152	\$15,735,917	\$1,911,968	\$58,799,990	\$126,065	\$110,192,613

FINANCIAL CONSTRAINT

Roadways

	Federal Funding Source												
	STP-U	Safety	Bridge	STP	130	HPP	BRO	TOTAL Federal Funds	Local	MoDOT Programmed Funds	Other	State Operations and Maintenance	TOTAL
2015 Funds Programmed	\$7,568,912	\$1,000,600	\$248,000	\$668,715	\$3,623,967	\$0	\$1,504,800	\$14,614,994	\$3,891,595	\$33,969,224	\$126,065	\$6,525,006	\$59,126,884
2016 Funds Programmed	\$4,216,001	\$1,032,800	\$4,651,200	\$0	\$128,000	\$0	\$320,000	\$10,348,001	\$1,137,734	\$24,964,000	\$0	\$665,506	\$37,115,241
2017 Funds Programmed	\$1,381,292	\$80,100	\$0	\$0	\$0	\$0	\$0	\$1,461,392	\$344,823	\$11,186,785	\$0	\$6,788,616	\$19,781,616
2018 Funds Programmed	\$300,000	\$0	\$0	\$100,000	\$0	\$166,134	\$0	\$566,134	\$1,254,000	\$6,327,866	\$0	\$6,924,388	\$15,072,388
Total	\$13,466,205	\$2,113,500	\$4,899,200	\$768,715	\$3,751,967	\$166,134	\$1,824,800	\$26,990,521	\$6,628,152	\$76,447,875	\$126,065	\$20,903,516	\$131,096,129

	Prior Year	FY 2015	FY 2016	FY 2017	FY 2018	TOTAL
Available State and Federal Funding	\$24,201,377	\$27,240,000	\$25,680,000	\$8,750,000	\$8,090,000	\$93,961,377
Available Operations and Maintenance Funding	\$-	\$6,525,006	\$665,506	\$6,788,616	\$6,924,388	\$20,903,516
Available Suballocated STP-U/Small Urban	\$23,213,240	\$5,410,663	\$5,414,570	\$4,599,063	\$4,599,063	\$43,236,599
Available Suballocated BRM	\$1,542,036	\$338,170	\$338,170	\$338,170	\$338,170	\$2,894,716
TOTAL AVAILABLE FUNDING	\$48,956,653	\$39,513,839	\$32,098,246	\$20,475,849	\$19,951,621	\$160,996,208
Prior Year Funding	\$-	\$48,956,653	\$33,361,268	\$29,482,007	\$30,521,063	-
Programmed State and Federal Funding	\$-	(\$55,109,224)	(\$35,977,507)	(\$19,436,793)	(\$13,818,388)	(\$124,341,912)
TOTAL REMAINING	\$48,956,653	\$33,361,268	\$29,482,007	\$30,521,063	\$36,654,296	\$36,654,296

Remaining State and Federal Funding	\$3,989,186
Remaining Suballocated STP-Urban/Small Urban	\$29,770,394
Remaining Suballocated BRM	\$2,894,716
TOTAL REMAINING	\$36,654,296

declining revenues from the Highway Trust Fund, as well as MoDOT's declining ability to match federal funds, due to a decrease in projected state revenue. This table does not include OTO sub-allocated federal funding, such as STP-Urban, BRM, or Enhancement. Transit funding includes all formula funding distributed to the Springfield, MO area for FTA Sections 5307, 5310, and 5339 funding.

Table G.1	2015	2016	2017	2018
Roadway Funding	\$27,240,000	\$25,680,000	\$8,750,000	\$8,090,000
Transit Funding	\$3,026,518	\$3,026,518	\$3,026,518	\$3,026,518

The Ozarks Transportation Organization maintains fund balances for STP-Urban, On-System Bridge (BRM), and Transportation Alternative Program funds, making projections based on funding received in prior years, as well as funding allocations in the federal transportation bill. A three percent inflation rate has been used to forecast revenues and expenditures. OTO has accumulated balances in these funds from prior years.

The TIP financial element is consistent with the OTO Long Range Transportation Plan, *Journey 2035*.

FEDERAL SUB-ALLOCATED REVENUE

The Ozarks Transportation Organization is responsible for selecting projects within three federal revenue categories. This means that OTO is responsible for project selection, programming, reasonable progress, and the maintenance of fund balances for STP-Urban, On-System Bridge (BRM), and Transportation Alternative Program funding categories. These fund balances are shown below.

OTO has been receiving sub-allocated funding since 2003. The funds which have accumulated "except for Transit" since then are referred to as "Carryover Balance" below. OTO has elected to maintain a healthy reserve of sub-allocated STP-Urban funding in order to be able to fund larger regionally significant projects, hence the larger carryover balance shown.

Table G.2 STP-Urban/Small Urban	
Carryover Balance through FY2014	\$23,213,240
Anticipated Allocation FY2015	\$5,410,663
Anticipated Allocation FY2016	\$5,414,570
Anticipated Allocation FY2017	\$4,599,063
Anticipated Allocation FY2018	\$4,599,063
Programmed through FY2018	(\$13,514,505)
Estimated Carryover Balance Through FY 2018	\$29,722,094

Table G.3 On-System Bridge (BRM)	
Carryover Balance through FY2014	\$1,542,036
Anticipated Allocation FY2015	\$338,170
Anticipated Allocation FY2016	\$338,170
Anticipated Allocation FY2017	\$338,170
Anticipated Allocation FY2018	\$338,170
Programmed through FY2018	(\$1,189,657)
Estimated Carryover Balance Through FY 2018	\$1,705,059

Table G.4 Transportation Alternatives Program	
Carryover Balance through FY2014	\$837,863
Anticipated Allocation FY2015	\$1,199,376
Anticipated Allocation FY2016	\$0
Anticipated Allocation FY2017	\$612,826
Anticipated Allocation FY2018	\$612,826
Programmed through FY2018	(\$2,030,395)
Estimated Carryover Balance Through FY 2018	\$1,232,496

FEDERAL AND STATE REVENUE SOURCES

Funding for the Missouri Department of Transportation consists of both federal and state revenue, as well as proceeds received from the sale of bonds.

The largest source of transportation revenue for MoDOT is from the federal government and includes the 18.4-cents per gallon tax on gasoline and 24.4-cents per gallon tax on diesel fuel. Other sources include various taxes on tire, truck, and trailer sales, as well as heavy vehicle use. These highway user fees are deposited in the federal Highway Trust Fund and distributed to the states based on formulae prescribed by federal law through transportation funding acts. This revenue source also includes multi-modal and highway safety grants. Approximately 33 percent of MoDOT's transportation revenue comes from the federal government.

The next largest source of MoDOT's transportation revenue is from the state fuel tax. Fuel taxes represent the state share of revenue received from the State's 17-cent per gallon tax on gasoline and diesel fuels which must be spent on highways and bridges. This revenue source also includes a 9-cent per gallon excise tax on aviation fuel which must be spent on airport projects. These tax revenues provide approximately 30 percent of MoDOT's transportation revenues. In July 2013, the state legislature eliminated the state motor vehicle use tax and replaced it with the state motor vehicle sales tax, which directs a greater portion to local government agencies. Growth in this category is not expected to keep pace with inflation.

MoDOT receives a portion of the state sales and use taxes paid upon the purchase or lease of motor vehicles. This revenue source also includes the sales tax paid on aviation fuel, which is dedicated to airport projects. These taxes provide approximately 17 percent of MoDOT's transportation revenues. In November 2004, Missouri voters passed Constitutional Amendment 3, which set in motion a four-year phase-in redirecting motor vehicle sales taxes previously deposited in the State's general revenue fund to a newly-created State Road Bond Fund. In state fiscal year 2009, the process of redirecting motor vehicle sales taxes to transportation was fully phased in and the rate of growth in this revenue source has slowed. In July 2013, the state legislature eliminated the state motor vehicle use tax and replaced it with the state motor vehicle sales tax, which directs a greater portion to local government agencies. Growth in this category is not expected to keep pace with inflation.

Vehicle and driver licensing fees include the state share of revenue received from licensing motor vehicles and drivers. This revenue source also includes fees for railroad regulation which are dedicated to multi-modal programs. These fees provide approximately 14 percent of MoDOT's transportation revenues. Similar to the

REVENUE

An explanation of revenue sources that provide for the operation and maintenance of the transportation system as well as the capital improvements to the transportation system may be found in the preceding pages under explanation of fiscal constraint.

The following table highlights the ability of OTO jurisdictions to deliver local projects as shown in the project pages.

Table G.9 Revenue	FY 2015	FY 2016	FY 2017	FY 2018
City of Battlefield				
Total Available Revenue	\$232,024.00	\$232,024.00	\$232,024.00	\$232,024.00
Estimated Operations and Maintenance Expenditures	(\$3,731.00)	(\$3,806.00)	(\$3,882.00)	(\$3,960.00)
Estimated TIP Project Expenditures	(\$2,000.00)	\$0.00	\$0.00	\$0.00
Amount Available for Local Projects	\$226,293.00	\$228,218.00	\$228,142.00	\$228,064.00
City of Nixa				
Total Available Revenue (prior reserves included)	\$1,724,056.00	\$1,724,056.00	\$1,724,056.00	\$1,724,056.00
Estimated Operations and Maintenance Expenditures	(\$25,424.00)	(\$25,932.00)	(\$26,451.00)	(\$26,980.00)
Estimated TIP Project Expenditures	(\$1,558,651.00)	(\$326,750.00)	\$0.00	\$0.00
Amount Available for Local Projects	\$510,244.00	\$1,371,374.00	\$1,697,605.00	\$1,697,076.00
City of Ozark				
Total Available Revenue	\$640,830.00	\$640,830.00	\$640,830.00	\$640,830.00
Estimated Operations and Maintenance Expenditures	(\$60,512.00)	(\$61,722.00)	(\$62,956.00)	(\$64,215.00)
Estimated TIP Project Expenditures	(\$72,460.00)	\$0.00	\$0.00	\$0.00
Amount Available for Local Projects	\$507,858.00	\$579,108.00	\$577,874.00	\$576,615.00
City of Republic				
Total Available Revenue	\$1,670,475.00	\$1,670,475.00	\$1,670,475.00	\$1,670,475.00
Estimated Operations and Maintenance Expenditures	(\$36,355.00)	(\$37,082.00)	(\$37,824.00)	(\$38,580.00)
Estimated TIP Project Expenditures	(\$141,186.00)	\$0.00	\$0.00	\$0.00
Amount Available for Local Projects	\$1,492,934.00	\$1,633,393.00	\$1,632,651.00	\$1,631,895.00
City of Springfield				
Total Available Revenue	\$21,305,118.00	\$21,305,118.00	\$21,305,118.00	\$21,305,118.00
Estimated Operations and Maintenance Expenditures	(\$2,325,881.00)	(\$2,372,399.00)	(\$2,419,847.00)	(\$2,468,244.00)
Estimated TIP Project Expenditures	(\$881,571.00)	(\$430,984.00)	(\$344,823.00)	(\$1,254,000.00)
Amount Available for Local Projects	\$18,097,666.00	\$18,501,735.00	\$18,540,271.00	\$17,582,874.00

Continued on next page...

Table G.9 Revenue	FY 2015	FY 2016	FY 2017	FY 2018
City of Strafford				
Total Available Revenue	\$100,297.00	\$100,297.00	\$100,297.00	\$100,297.00
Estimated Operations and Maintenance Expenditures	\$0.00	\$0.00	\$0.00	\$0.00
Estimated TIP Project Expenditures	(\$72,500.00)	\$0.00	\$0.00	\$0.00
Amount Available for Local Projects	\$27,797.00	\$100,297.00	\$100,297.00	\$100,297.00
City of Willard				
Total Available Revenue	\$467,355.00	\$467,355.00	\$467,355.00	\$467,355.00
Estimated Operations and Maintenance Expenditures	(\$13,948.00)	(\$14,227.00)	(\$14,512.00)	(\$14,802.00)
Estimated TIP Project Expenditures	(\$13,739.00)	\$0.00	\$0.00	\$0.00
Amount Available for Local Projects	\$439,668.00	\$453,128.00	\$452,843.00	\$452,553.00
Christian County				
Total Available Revenue	\$1,541,779.00	\$1,541,779.00	\$1,541,779.00	\$1,541,779.00
Estimated Operations and Maintenance Expenditures	(\$40,163.00)	(\$40,966.00)	(\$41,785.00)	(\$42,621.00)
Estimated TIP Project Expenditures	(\$1,557,044.00)	\$0.00	\$0.00	\$0.00
Amount Available for Local Projects	\$1,501,616.00	\$1,500,813.00	\$1,499,994.00	\$1,499,158.00
Greene County				
Total Available Revenue	\$21,647,886.00	\$21,647,886.00	\$21,647,886.00	\$21,647,886.00
Estimated Operations and Maintenance Expenditures	(\$106,796.00)	(\$108,932.00)	(\$111,111.00)	(\$113,333.00)
Estimated TIP Project Expenditures	(\$916,200.00)	(\$380,000)	\$0.00	\$0.00
Amount Available for Local Projects	\$20,624,890.00	\$21,158,954.00	\$21,536,775.00	\$21,534,553.00