



**U.S. Department of Transportation**

**Federal Transit Administration**

901 Locust, Room 404  
Kansas City, MO 64106  
816-329-3920  
816-329-3921 (fax)

**Federal Highway Administration**

3220 W. Edgewood, Suite H  
Jefferson City, MO 65109  
573-636-7104  
573-636-9283 (fax)

July 8, 2015

Ms. Roberta Broeker, Interim Director  
Missouri Department of Transportation  
P.O. Box 270  
Jefferson City, Missouri 65102

Re: FHWA/FTA Approval of "Highway Project Only"  
Amendment to the Missouri FY 2016-2020 STIP to  
incorporate the Ozarks Transportation Organization (OTO)  
FY 2015-2018 Transportation Improvement Program (TIP)  
Amendment #5

Dear Ms. Broeker:

The Federal Highway Administration (FHWA) has reviewed MoDOT's request to amend the FY 2016-2020 Missouri State Transportation Improvement Program (STIP) to incorporate the Ozarks Transportation Organization's (OTO) modification of their FY 2015- 2018 Transportation Improvement Program (TIP), as further described in your letter of July 1, 2015. This amendment includes the addition of 9 new MoDOT sponsored highway projects and the modification of 19 currently programmed MoDOT projects.

The OTO Board of Directors approved the TIP amendment on June 18, 2015. The Missouri governor approved the subject TIP amendment on June 30, 2015.

In accordance with 23 CFR 450.218(b), we have determined that this STIP amendment is based on a transportation planning process that substantially meets the requirements of 23 U.S.C 134 and 135, 49 U.S.C. 5303 and 5304 and 23 CFR 450 Subparts A, B, and C. Based on our review, this STIP amendment request is approved.

If you have any questions, please contact Mr. Brad McMahon at FHWA (573) 638-2609.

Sincerely,

For: Kevin Ward, P.E.  
Division Administrator  
Federal Highway Administration

cc: Sara Edwards, OTO  
Kelly Turner, City Utilities

Jay Huff, Missouri State University  
Machelle Watkins, MoDOT  
Eva Voss, MoDOT  
Frank Miller, MoDOT Southwest District  
Sharon Monroe, MoDOT  
Jeremiah Shuler, FTA Region VII

**Missouri Department of Transportation**  
*Roberta Broeker, Interim Director*

573.751.2551  
Fax: 573.751.6555  
1.888.ASK MODOT (275.6636)

July 1, 2015

Mr. Kevin Ward  
Regional Administrator  
Federal Highway Administration  
3220 West Edgewood, Suite H  
Jefferson City, MO 65109

Dear Mr. Ward:

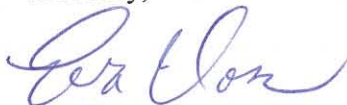
SUBJECT: Springfield Metropolitan Area  
FY 2015-2018 Transportation Improvement Program  
Ozarks Transportation Organization  
Approval to Incorporate TIP Amendment #5 into FY 2016-2020 STIP

As required by the 2012 Moving Ahead for Progress in the 21<sup>st</sup> Century Act, MAP-21, MoDOT received approval from Governor Nixon for a TIP amendment in the Springfield metropolitan area that includes the addition of nine MoDOT projects and 19 updated MoDOT projects.

Enclosed is a copy of the Governor's approval letter and supporting documentation. The Ozarks Transportation Organization Board of Directors approved the TIP amendment on June 18, 2015. All public involvement considerations were met and fiscal constraint has been ensured.

We request approval of incorporating this TIP amendment into the FY 2016-2020 State Transportation Improvement Program (STIP) at your earliest convenience. TIP projects and priorities are identified with the assistance of our planning partners using MoDOT's award-winning Planning Framework process. More information about the Planning Framework may be found at [http://www.modot.mo.gov/plansandprojects/planning\\_projects/PlanningFramework](http://www.modot.mo.gov/plansandprojects/planning_projects/PlanningFramework).

Sincerely,



Eva Voss  
Sr. Transportation Planner

ev

J:\URBAN\OTO - Springfield\FY 2015\TIP Amendments\TIP Amendment 5\MoDOT letter to ONEDOT.docx

Enclosure

Copies: Mr. Brad McMahon-FHWA      Ms. Sara Fields-OTO  
            Mr. Frank Miller-SW        Ms. Natasha Longpine-OTO



*Our mission is to provide a world-class transportation experience that delights our customers and promotes a prosperous Missouri.*

[www.modot.org](http://www.modot.org)

**Missouri Department of Transportation**  
*Roberta Broeker, Interim Director*

1.888.ASK MODOT (275.6636)

June 22, 2015

The Honorable Jeremiah W. (Jay) Nixon  
Governor of Missouri  
State Capitol  
Jefferson City, MO 65101

Dear Governor Nixon:

On June 18, 2015, the Ozarks Transportation Organization (OTO) Board of Directors approved an amendment to the FY 2015-2018 Transportation Improvement Plan (TIP) for the Springfield metropolitan area. The TIP amendment covers the addition of nine MoDOT projects and 19 updated MoDOT projects. MoDOT is satisfied the federal requirements have been met in the development of this TIP amendment, including the opportunity for the public to comment on projects. No comments were received.

Enclosed is a copy of the TIP amendment for your review. We request approval of this action at your earliest convenience, so project authorization can proceed in the Springfield metropolitan area.

Sincerely,



Roberta Broeker, CPA  
Interim Director

Enclosure

Approved:

\_\_\_\_\_  
Title: Governor of Missouri

Date: 6-30-15



*Our mission is to provide a world-class transportation experience that delights our customers and promotes a prosperous Missouri.*

[www.modot.org](http://www.modot.org)



## OZARKS TRANSPORTATION ORGANIZATION

A METROPOLITAN PLANNING ORGANIZATION

205 PARK CENTRAL EAST, SUITE 205 SPRINGFIELD, MO 65806 417-865-3042 [p] 417-862-6013 [f]

19 June 2015

Ms. Eva Voss  
Transportation Planning  
Missouri Department of Transportation  
P. O. Box 270  
Jefferson City, Missouri 65102

Dear Ms. Voss:

We respectfully request the approval of the FY 2015-2018 Ozarks Transportation Organization Transportation Improvement Program (TIP) Amendment Number Five. The Board of Directors adopted this amendment on June 18, 2015. The adoption included demonstration of fiscal constraint as required by federal regulations. Public comment was taken in accordance with federal law and in accordance with the OTO Public Involvement Policy and no public comment was received. This amendment includes 28 changes. Descriptions and additional TIP information are included with this letter.

Please find enclosed the requested TIP amendment. Timely approval of this amendment would be appreciated as these changes correspond to the draft 2016-2020 Statewide Transportation Improvement Program scheduled to begin July 1, 2015. Please let me know if you need any other information.

Sincerely,

Natasha L. Longpine, AICP  
Principal Planner

Enclosure: TIP Approval Packet



OZARKSTRANSPORTATION.ORG

**Amendment Number Five to the FY 2015-2018 Transportation Improvement Program  
Ozarks Transportation Organization  
(Springfield, MO Area MPO)**

**DESCRIPTION:**

There are twenty-eight items included as part of Amendment Number Five to the FY 2015-2018 Transportation Improvement Program, requested by MoDOT. Many are updates to correspond with the FY 2016-2020 Statewide Transportation Improvement Program, including nine new projects.

1. \*Update\* Enhancement Projects at Various Locations (EN1601)  
Updated to Route 14 ADA Improvements in Christian County, specifying the locations, for a total programmed amount of \$279,000 (increased from \$240,000).
2. \*Update\* Route 13 Bridges over Radio Lane (GR1408)  
Change from scoping to construction for the Route 13 bridges over Radio Lane for a total programmed amount of \$1,516,000 (increased from \$4,000).
3. \*Update\* Safety Improvements on Various Minor Routes (MO1201)  
Changed to be more specific as High Friction Surface treatment on Highway 14 at Richwood Road with a total programmed amount of \$76,000 (reduced from \$94,000).
4. \*Update\* Pavement Improvements on Various Major Routes (MO1404)  
Changed to be more specific as Kansas Expressway Pavement Improvements at I-44 for a total programmed amount of \$277,000 (reduced from \$5,605,000).
5. \*Update\* Annual Guardrail and Guard Cable Repair Program (MO1505)  
Funding updated and moved to FY 2018 for a total programmed amount of \$202,000 (increased from \$189,000).
6. \*Update\* Glenstone Avenue Safety Improvements (MO1604)  
Addition of right-of-way, plus some other funding changes in FY 2016 for a total programmed amount of \$852,000 (reduced from \$1,151,000).
7. \*Update\* Annual Guardrail and Guard Cable Repair Program (MO1705)  
Change from MoDOT-AC to Federal Funding for a total programmed amount of \$198,000 (reduced from \$204,000).
8. \*Update\* Route 60 and Route 125 Intersection (RG1201)  
Change from MoDOT-AC to Federal Funding for a total programmed amount of \$5,000 (reduced from \$347,000).
9. \*Update\* Pavement Improvements on Route 60 in Republic (RP1401)  
Change from MoDOT-AC to Federal Funding for a total programmed amount of \$225,000 (increased from \$207,000).
10. \*Update\* Eastgate Avenue Relocation (SP1106)  
Change in funding categories and funding amounts for a total programmed amount of \$2,775,800 (reduced from \$2,853,000).

11. \*Update\* Route 65 Southbound Bridge over I-44 (SP1112)  
Change in funding categories and a reduction in total estimated cost for a programmed amount of \$3,971,000 (reduced from \$4,192,000).
12. \*Update\* Evans Road Bridge over Route 65 (SP1204)  
Change from MoDOT-AC to Federal Funding for a total programmed amount of \$941,800 (reduced from \$1,030,000).
13. \*Update\* Intersection Improvements at Kearney Street and Packer Avenue (SP1323)  
Change in funding categories and a reduction in total estimated cost for a programmed amount of \$2,547,096 (reduced from 1,852,000).
14. \*Update\* Signal Replacement Program O Kansas Expressway (SP1401)  
Change from MoDOT-AC to Federal Funding for a total programmed amount of \$537,000 (increased from \$489,000).
15. \*Update\* Payment for Traffic Sensing Equipment at Various Locations (SP1403)  
Change from MoDOT-AC to Federal Funding for a total programmed amount of \$602,000 (increased from \$601,000).
16. \*Update\* I-44 Pavement Improvements (SP1409)  
Change from MoDOT-AC to Federal Funding for a total programmed amount of \$8,423,000 (decreased from \$10,037,000).
17. \*Update\* Route 65 Improvements (SP1410)  
Update in cost estimates for a total programmed amount of \$14,716,000 (increased from \$9,365,000).
18. \*Update\* Route 65 and Division Street Interchange (SP1415)  
Change in funding categories and an increase in total estimated cost for a programmed amount of \$4,483,000 (reduced from \$4,397,000).
19. \*Update\* Willard Intersection Improvements (WI1301)  
Change in funding categories and a reduction in total estimated cost for a programmed amount of \$859,000 (reduced from \$879,000).
20. \*New\* I-44 Pavement Improvements East of Strafford (GR1602)  
Pavement improvements on disconnected sections of I-44 from 0.5 mile east of Rte. 125 to the Webster County line for a total programmed amount of \$575,000.
21. \*New\* I-44 Pavement Repair (MO1606)  
Job Order Contracting for I-44 pavement repair in the Ozarks Transportation Organization area for a total programmed amount of \$216,000.
22. \*New\* Resurfacing on Various Primary Routes (MO1607)  
Pavement improvements on primary routes in the OTO area for a total programmed amount of \$51,000.

23. **\*New\*** Annual On-Call Work Zone Enforcement Program (MO1608)  
On-call work zone enforcement in the OTO area for a total programmed amount of \$45,000.
24. **\*New\*** Scoping for Bridge Improvements (MO1609)  
Scoping for bridge improvements in the OTO area for a total programmed amount of \$30,000.
25. **\*New\*** Scoping for Various Safety Improvements (MO1610)  
Scoping for safety improvements at various locations in the OTO area for a total programmed amount of \$30,000.
26. **\*New\*** Scoping for Resurfacing on Various Primary Routes (MO1611)  
Scoping for pavement improvements on primary routes in the OTO area for a total programmed amount of \$30,000.
27. **\*New\*** James River Freeway Pavement Improvements (SP1601)  
Pavement improvements from Route 13 to 0.7 miles west of Route 65 on Springfield for a total programmed amount of \$352,000.
28. **\*New\*** Route 65 Pavement Improvements in Springfield (SP1602)  
Route 65 pavement improvements from north of Valley Water Mill to Route 60 for a total programmed amount of \$8,673,000.

**TECHNICAL PLANNING COMMITTEE ACTION TAKEN:**

At its May 20, 2015 meeting, the Technical Planning Committee unanimously approved the following motion:

“Move to recommend that the Board of Directors approve Amendment 5 to the FY 2015-2018 Transportation Improvement Program.”

**PUBLIC COMMENT:**

TIP Amendment Number 5 was made available for public comment on June 3, 2015 and no comment was received ahead of the June 18, 2015 Board of Directors Meeting.

**BOARD OF DIRECTORS ACTION TAKEN:**

The Board of Directors unanimously approved the following motion at its June 18, 2015 meeting:

“Move to approve Amendment 5 to the FY 2015-2018 Transportation Improvement Program.”



# Transportation Improvement Program - FY 2015-2018

Project Detail by Section and Project Number with Map

## D) Bicycle & Pedestrian Section

**TIP #** EN1601      **ENHANCEMENT PROJECTS AT VARIOUS LOCATIONS**

**Route**      Various

**From**

**To**

**Location/Agency**

**Federal Agency**

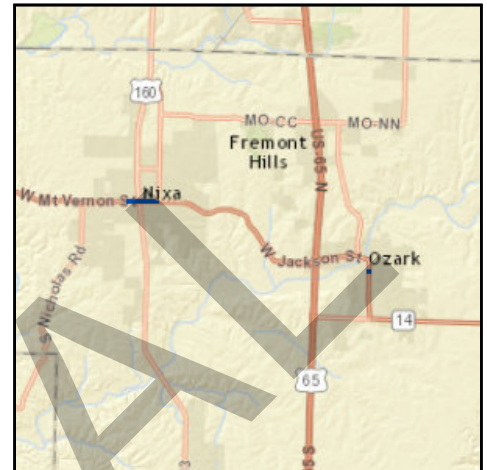
**Responsible Agency**      MoDOT

**Federal Funding Category**      STP/TE

**MoDOT Funding Category**      Taking Care of the System

**AC Year of Conv.**

**STIP #**      0P3011I



### Project Description

Enhancement projects at various locations in the OTO area.

Fund Code	Source	Phase	FY2015	FY2016	FY2017	FY2018	Total
FHWA (TE)	Federal	CON	\$0	\$192,000	\$0	\$0	\$192,000
MoDOT	State	CON	\$0	\$48,000	\$0	\$0	\$48,000
<b>Totals</b>			<b>\$0</b>	<b>\$240,000</b>	<b>\$0</b>	<b>\$0</b>	<b>\$240,000</b>

### Notes

\$240,000 Statewide Transportation Enhancement funds.

<b>Prior Cost</b>	\$0
<b>Future Cost</b>	\$0
<b>Total Cost</b>	\$240,000



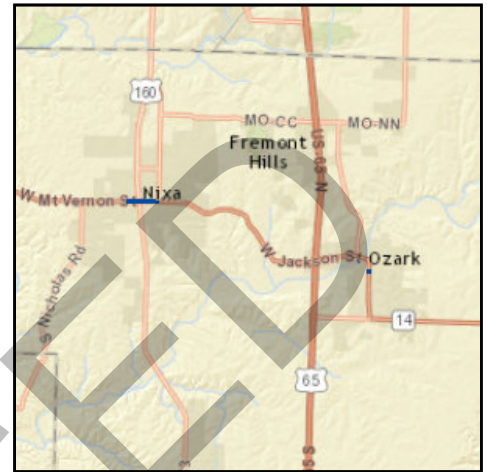
## Transportation Improvement Program - FY 2015-2018

### Project Detail by Section and Project Number with Map

#### D) Bicycle & Pedestrian Section

**TIP #** EN1601      **ROUTE 14 ADA IMPROVEMENTS IN CHRISTIAN COUNTY**

**Route** 14  
**From** Ellen Street  
**To** Walnut Street  
**Location/Agency** Christian County  
**Federal Agency** FHWA  
**Responsible Agency** MoDOT  
**Federal Funding Category** STP/TE  
**MoDOT Funding Category** Taking Care of the System  
**AC Year of Conv.**  
**STIP #** 0P3011I



#### Project Description

ADA improvements at various locations from Ellen St. to Main St. in Nixa and from Church St. to Walnut St. in Ozark.

Fund Code	Source	Phase	FY2015	FY2016	FY2017	FY2018	Total
FHWA (STP)	Federal	ENG	\$0	\$30,400	\$0	\$0	\$30,400
MoDOT	State	ENG	\$0	\$7,600	\$0	\$0	\$7,600
FHWA (STP)	Federal	ROW	\$0	\$800	\$0	\$0	\$800
MoDOT	State	ROW	\$0	\$200	\$0	\$0	\$200
FHWA (TE)	Federal	CON	\$0	\$192,000	\$0	\$0	\$192,000
MoDOT	State	CON	\$0	\$48,000	\$0	\$0	\$48,000
<b>Totals</b>			<b>\$0</b>	<b>\$279,000</b>	<b>\$0</b>	<b>\$0</b>	<b>\$279,000</b>

#### Notes

Source of Funds: State transportation revenue.

<b>Prior Cost</b>	\$0
<b>Future Cost</b>	\$0
<b>Total Cost</b>	\$279,000



# Transportation Improvement Program - FY 2015-2018

Project Detail by Section and Project Number with Map

## E) Roadways Section

**TIP # GR1408** SCOPING FOR ROUTE 13 BRIDGES OVER RADIO LANE

**Route** Route 13  
**From** Route 13  
**To** over Radio Lane

**Location/Agency**

**Federal Agency**

**Responsible Agency** MoDOT

**Federal Funding Category** NHPP(NHS), STP, BRM

**MoDOT Funding Category** Taking Care of the System

**AC Year of Conv.** FY 2015, FY 2016

**STIP #** 8P3039



### Project Description

Scoping for bridge improvements on Route 13 over Radio Lane.

Fund Code	Source	Phase	FY2015	FY2016	FY2017	FY2018	Total
MoDOT	State	ENG	\$400	\$400	\$0	\$0	\$800
MoDOT-AC	State	ENG	\$1,600	\$1,600	\$0	\$0	\$3,200
<b>Totals</b>			<b>\$2,000</b>	<b>\$2,000</b>	<b>\$0</b>	<b>\$0</b>	<b>\$4,000</b>

### Notes

Source of State Funds: State transportation revenues.

<b>Prior Cost</b>	\$2,000
<b>Future Cost</b>	\$0
<b>Total Cost</b>	\$6,000



# Transportation Improvement Program - FY 2015-2018

Project Detail by Section and Project Number with Map

## E) Roadways Section

**TIP # GR1408** ROUTE 13 BRIDGES OVER RADIO LANE

**Route** Route 13

**From** Route 13

**To** over Radio Lane

**Location/Agency** Greene County

**Federal Agency** FHWA

**Responsible Agency** MoDOT

**Federal Funding Category** NHPP(Bridge)

**MoDOT Funding Category** Taking Care of the System

**AC Year of Conv.** FY 2015, FY 2016, FY 2017

**STIP #** 8P3039



### Project Description

Bridge improvements on Route 13 over Radio Lane.

Fund Code	Source	Phase	FY2015	FY2016	FY2017	FY2018	Total
FHWA	Federal	ENG	\$0	\$150,400	\$0	\$0	\$150,400
MoDOT	State	ENG	\$400	\$37,600	\$0	\$0	\$38,000
MoDOT-AC	State	ENG	\$1,600	\$0	\$0	\$0	\$1,600
MoDOT	State	CON	\$0	\$265,200	\$0	\$0	\$265,200
MoDOT-AC	State	CON	\$0	\$1,060,800	\$0	\$0	\$1,060,800
<b>Totals</b>			<b>\$2,000</b>	<b>\$1,514,000</b>	<b>\$0</b>	<b>\$0</b>	<b>\$1,516,000</b>

### Notes

Source of State Funds: State transportation revenues.

<b>Prior Cost</b>	\$2,000
<b>Future Cost</b>	\$0
<b>Total Cost</b>	\$1,518,000



# Transportation Improvement Program - FY 2015-2018

Project Detail by Section and Project Number with Map

## E) Roadways Section

**TIP #** MO1201 SAFETY IMPROVEMENTS ON VARIOUS MINOR ROUTES

**Route** Various

**From** N/A

**To** N/A

**Location/Agency**

**Federal Agency**

**Responsible Agency** MoDOT

**Federal Funding Category** Safety

**MoDOT Funding Category** Safety

**AC Year of Conv.**

**STIP #** 8P2383



### Project Description

Safety improvements on various minor routes in the OTO area.

Fund Code	Source	Phase	FY2015	FY2016	FY2017	FY2018	Total
FHWA	Federal	ENG	\$1,800	\$2,700	\$32,400	\$0	\$36,900
MoDOT	State	ENG	\$200	\$300	\$3,600	\$0	\$4,100
FHWA	Federal	CON	\$0	\$0	\$47,700	\$0	\$47,700
MoDOT	State	CON	\$0	\$0	\$5,300	\$0	\$5,300
<b>Totals</b>			<b>\$2,000</b>	<b>\$3,000</b>	<b>\$89,000</b>	<b>\$0</b>	<b>\$94,000</b>

### Notes

Source of State Funds: State transportation revenues.

<b>Prior Cost</b>	\$7,000
<b>Future Cost</b>	\$0
<b>Total Cost</b>	\$101,000



## Transportation Improvement Program - FY 2015-2018

### Project Detail by Section and Project Number with Map

#### E) Roadways Section

**TIP #** MO1201      **HIGH FRICTION SURFACE AT RICHWOOD ROAD**

**Route** 14

**From** N/A

**To** N/A

**Location/Agency** City of Nixa

**Federal Agency** FHWA

**Responsible Agency** MoDOT

**Federal Funding Category** Safety

**MoDOT Funding Category** Safety

**AC Year of Conv.**

**STIP #** 8P2383

No Map  
Available

#### Project Description

High friction surface treatment on Route 14 curves near Richwood Valley Road.

Fund Code	Source	Phase	FY2015	FY2016	FY2017	FY2018	Total
FHWA	Federal	ENG	\$1,800	\$6,400	\$0	\$0	\$8,200
MoDOT	State	ENG	\$200	\$1,600	\$0	\$0	\$1,800
FHWA	Federal	CON	\$0	\$59,400	\$0	\$0	\$59,400
MoDOT	State	CON	\$0	\$6,600	\$0	\$0	\$6,600
<b>Totals</b>			<b>\$2,000</b>	<b>\$74,000</b>	<b>\$0</b>	<b>\$0</b>	<b>\$76,000</b>

#### Notes

Source of State Funds: State transportation revenues.

<b>Prior Cost</b>	\$7,000
<b>Future Cost</b>	\$0
<b>Total Cost</b>	\$83,000



## Transportation Improvement Program - FY 2015-2018

Project Detail by Section and Project Number with Map

### E) Roadways Section

**TIP #** MO1404 PAVEMENT IMPROVEMENTS ON VARIOUS MAJOR ROUTES

**Route** Various

**From** N/A

**To** N/A

**Location/Agency**

**Federal Agency**

**Responsible Agency** MoDOT

**Federal Funding Category** NHPP(NHS)

**MoDOT Funding Category** Taking Care of the System

**AC Year of Conv.** FY 2017, 2018

**STIP #** 8P3035



#### Project Description

Pavement improvements on various major routes in the OTO area.

Fund Code	Source	Phase	FY2015	FY2016	FY2017	FY2018	Total
MoDOT	State	ENG	\$400	\$4,800	\$44,600	\$0	\$49,800
MoDOT-AC	State	ENG	\$1,600	\$19,200	\$178,400	\$0	\$199,200
MoDOT	State	CON	\$0	\$0	\$1,071,200	\$0	\$1,071,200
MoDOT-AC	State	CON	\$0	\$0	\$4,284,800	\$0	\$4,284,800
<b>Totals</b>			<b>\$2,000</b>	<b>\$24,000</b>	<b>\$5,579,000</b>	<b>\$0</b>	<b>\$5,605,000</b>

#### Notes

Source of State Funds: State transportation revenues.

<b>Prior Cost</b>	\$2,000
<b>Future Cost</b>	\$0
<b>Total Cost</b>	\$5,607,000



## Transportation Improvement Program - FY 2015-2018

### Project Detail by Section and Project Number with Map

#### E) Roadways Section

**TIP #** MO1404 KANSAS EXPWY PAVEMENT IMPROVEMENTS AT I-44

**Route** 13

**From** Norton Road

**To** Evergreen Street

**Location/Agency** City of Springfield

**Federal Agency** FHWA

**Responsible Agency** MoDOT

**Federal Funding Category** NHPP(NHS)

**MoDOT Funding Category** Taking Care of the System

**AC Year of Conv.** FY 2017, FY 2018

**STIP #** 8P3035

No Map  
Available

#### Project Description

Pavement improvements on Kansas Expressway (Route 13) from Norton Road to Evergreen Street.

Fund Code	Source	Phase	FY2015	FY2016	FY2017	FY2018	Total
FHWA (NHPP)	Federal	ENG	\$0	\$12,800	\$0	\$0	\$12,800
MoDOT	State	ENG	\$400	\$3,200	\$0	\$0	\$3,600
MoDOT-AC	State	ENG	\$1,600	\$0	\$0	\$0	\$1,600
FHWA (NHPP)	Federal	CON	\$0	\$0	\$207,200	\$0	\$207,200
MoDOT	State	CON	\$0	\$0	\$51,800	\$0	\$51,800
<b>Totals</b>			<b>\$2,000</b>	<b>\$16,000</b>	<b>\$259,000</b>	<b>\$0</b>	<b>\$277,000</b>

#### Notes

Source of State Funds: State transportation revenues.

<b>Prior Cost</b>	\$2,000
<b>Future Cost</b>	\$0
<b>Total Cost</b>	\$279,000



# Transportation Improvement Program - FY 2015-2018

Project Detail by Section and Project Number with Map

## E) Roadways Section

**TIP #** MO1505 ANNUAL GUARDRAIL AND GUARD CABLE REPAIR PROGRAM

**Route** Various

**From** Various

**To** Various

**Location/Agency**

**Federal Agency**

**Responsible Agency** MoDOT

**Federal Funding Category** STP

**MoDOT Funding Category** Taking Care of the System

**AC Year of Conv.** FY 2017

**STIP #** 8P2243



### Project Description

Job order contracting for guardrail and guard cable repair in OTO area.

Fund Code	Source	Phase	FY2015	FY2016	FY2017	FY2018	Total
MoDOT	State	ENG	\$2,800	\$0	\$0	\$0	\$2,800
MoDOT-AC	State	ENG	\$11,200	\$0	\$0	\$0	\$11,200
MoDOT	State	CON	\$35,000	\$0	\$0	\$0	\$35,000
MoDOT-AC	State	CON	\$140,000	\$0	\$0	\$0	\$140,000
<b>Totals</b>			<b>\$189,000</b>	<b>\$0</b>	<b>\$0</b>	<b>\$0</b>	<b>\$189,000</b>

### Notes

Source of State Funds: State transportation revenues. Split from MO1150.

<b>Prior Cost</b>	\$4,000
<b>Future Cost</b>	\$0
<b>Total Cost</b>	\$193,000



## Transportation Improvement Program - FY 2015-2018

Project Detail by Section and Project Number with Map

### E) Roadways Section

**TIP #** MO1505 ANNUAL GUARDRAIL AND GUARD CABLE REPAIR PROGRAM

**Route** Various

**From** Various

**To** Various

**Location/Agency** Area Wide

**Federal Agency** FHWA

**Responsible Agency** MoDOT

**Federal Funding Category** STP

**MoDOT Funding Category** Taking Care of the System

**AC Year of Conv.**

**STIP #** 8P2243



#### Project Description

Job order contracting for guardrail and guard cable repair in OTO area.

Fund Code	Source	Phase	FY2015	FY2016	FY2017	FY2018	Total
FHWA (STP)	Federal	ENG	\$0	\$800	\$0	\$10,400	\$11,200
MoDOT	State	ENG	\$1,000	\$200	\$0	\$2,600	\$3,800
FHWA (STP)	Federal	CON	\$0	\$0	\$800	\$148,800	\$149,600
MoDOT	State	CON	\$0	\$0	\$200	\$37,200	\$37,400
<b>Totals</b>			<b>\$1,000</b>	<b>\$1,000</b>	<b>\$1,000</b>	<b>\$199,000</b>	<b>\$202,000</b>

#### Notes

Source of State Funds: State transportation revenues. Split from MO1150.

<b>Prior Cost</b>	\$4,000
<b>Future Cost</b>	\$0
<b>Total Cost</b>	\$206,000



# Transportation Improvement Program - FY 2015-2018

## Project Detail by Section and Project Number with Map

### E) Roadways Section

**TIP #** MO1604      **GLENSTONE AVENUE SAFETY IMPROVEMENTS**

**Route** Bus. 65, Loop 44

**From** I-44

**To** Battlefield Road

**Location/Agency**

**Federal Agency**

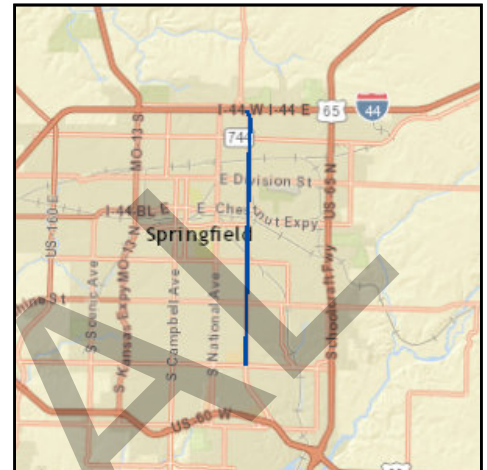
**Responsible Agency** MoDOT

**Federal Funding Category** Safety

**MoDOT Funding Category** Safety

**AC Year of Conv.**

**STIP #** 8P3023



#### Project Description

Safety improvements on various sections of Glenstone Avenue from I-44 to Battlefield Road.

Fund Code	Source	Phase	FY2015	FY2016	FY2017	FY2018	Total
FHWA	Federal	ENG	\$55,800	\$90,900	\$0	\$0	\$146,700
MoDOT	State	ENG	\$6,200	\$10,100	\$0	\$0	\$16,300
FHWA	Federal	CON	\$0	\$889,200	\$0	\$0	\$889,200
MoDOT	State	CON	\$0	\$98,800	\$0	\$0	\$98,800
<b>Totals</b>			<b>\$62,000</b>	<b>\$1,089,000</b>	<b>\$0</b>	<b>\$0</b>	<b>\$1,151,000</b>

#### Notes

Source of State Funds: State transportation revenues. \$959,000 Open Container Program funds.

<b>Prior Cost</b>	\$0
<b>Future Cost</b>	\$0
<b>Total Cost</b>	\$1,151,000



# Transportation Improvement Program - FY 2015-2018

Project Detail by Section and Project Number with Map

## E) Roadways Section

**TIP #** MO1604 **GLENSTONE AVENUE SAFETY IMPROVEMENTS**

**Route** Bus. 65, Loop 44

**From** I-44

**To** Battlefield Road

**Location/Agency** City of Springfield

**Federal Agency** FHWA

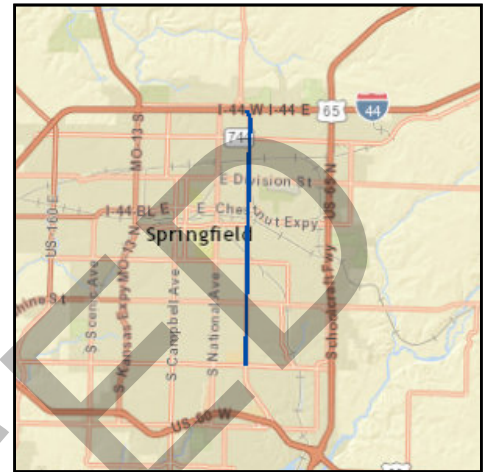
**Responsible Agency** MoDOT

**Federal Funding Category** Safety

**MoDOT Funding Category** Safety

**AC Year of Conv.**

**STIP #** 8P3023



### Project Description

Safety improvements on various sections of Glenstone Avenue from I-44 to Battlefield Road.

Fund Code	Source	Phase	FY2015	FY2016	FY2017	FY2018	Total
FHWA	Federal	ENG	\$55,800	\$80,100	\$0	\$0	\$135,900
MoDOT	State	ENG	\$6,200	\$8,900	\$0	\$0	\$15,100
FHWA	Federal	ROW	\$0	\$4,500	\$0	\$0	\$4,500
MoDOT	State	ROW	\$0	\$500	\$0	\$0	\$500
FHWA	Federal	CON	\$0	\$626,400	\$0	\$0	\$626,400
MoDOT	State	CON	\$0	\$69,600	\$0	\$0	\$69,600
<b>Totals</b>			<b>\$62,000</b>	<b>\$790,000</b>	<b>\$0</b>	<b>\$0</b>	<b>\$852,000</b>

### Notes

Source of State Funds: State transportation revenues. \$701,000 Open Container Program funds.

<b>Prior Cost</b>	\$0
<b>Future Cost</b>	\$0
<b>Total Cost</b>	\$852,000



## Transportation Improvement Program - FY 2015-2018

Project Detail by Section and Project Number with Map

### E) Roadways Section

**TIP #** MO1705 ANNUAL GUARDRAIL AND GUARD CABLE REPAIR PROGRAM

**Route** Various

**From** Various

**To** Various

**Location/Agency**

**Federal Agency**

**Responsible Agency** MoDOT

**Federal Funding Category** STP

**MoDOT Funding Category** Taking Care of the System

**AC Year of Conv.** FY 2017, FY 2018

**STIP #** 8P3009



#### Project Description

Job order contracting for guardrail and guard cable repair in OTO area.

Fund Code	Source	Phase	FY2015	FY2016	FY2017	FY2018	Total
MoDOT	State	ENG	\$400	\$400	\$2,800	\$0	\$3,600
MoDOT-AC	State	ENG	\$1,600	\$1,600	\$11,200	\$0	\$14,400
MoDOT	State	CON	\$0	\$0	\$37,200	\$0	\$37,200
MoDOT-AC	State	CON	\$0	\$0	\$148,800	\$0	\$148,800
<b>Totals</b>			<b>\$2,000</b>	<b>\$2,000</b>	<b>\$200,000</b>	<b>\$0</b>	<b>\$204,000</b>

#### Notes

Source of MoDOT Funds: State transportation revenues.

<b>Prior Cost</b>	\$2,000
<b>Future Cost</b>	\$0
<b>Total Cost</b>	\$206,000



## Transportation Improvement Program - FY 2015-2018

Project Detail by Section and Project Number with Map

### E) Roadways Section

**TIP # MO1705** ANNUAL GUARDRAIL AND GUARD CABLE REPAIR PROGRAM

**Route** Various

**From** Various

**To** Various

**Location/Agency** Area Wide

**Federal Agency** FHWA

**Responsible Agency** MoDOT

**Federal Funding Category** STP

**MoDOT Funding Category** Taking Care of the System

**AC Year of Conv.**

**STIP #** 8P3009



#### Project Description

Job order contracting for guardrail and guard cable repair in OTO area.

Fund Code	Source	Phase	FY2015	FY2016	FY2017	FY2018	Total
FHWA (STP)	Federal	ENG	\$0	\$1,600	\$11,200	\$0	\$12,800
MoDOT	State	ENG	\$400	\$400	\$2,800	\$0	\$3,600
MoDOT-AC	State	ENG	\$1,600	\$0	\$0	\$0	\$1,600
FHWA (STP)	Federal	CON	\$0	\$0	\$144,000	\$0	\$144,000
MoDOT	State	CON	\$0	\$0	\$36,000	\$0	\$36,000
<b>Totals</b>			<b>\$2,000</b>	<b>\$2,000</b>	<b>\$194,000</b>	<b>\$0</b>	<b>\$198,000</b>

#### Notes

Source of MoDOT Funds: State transportation revenues.

<b>Prior Cost</b>	\$2,000
<b>Future Cost</b>	\$0
<b>Total Cost</b>	\$200,000



# Transportation Improvement Program - FY 2015-2018

Project Detail by Section and Project Number with Map

## E) Roadways Section

**TIP #** RG1201      **ROUTE 60 AND ROUTE 125 INTERSECTION**

**Route** US 60 and Route 125

**From** US 60

**To** Route 125

**Location/Agency**

**Federal Agency**

**Responsible Agency** MoDOT

**Federal Funding Category** NHPP(NHS)

**MoDOT Funding Category** Taking Care of the System

**AC Year of Conv.** FY 2015, FY 2016, FY 2017

**STIP #** 8P2381



### Project Description

Intersection improvements at Route 60 and Route 125 in Rogersville.

Fund Code	Source	Phase	FY2015	FY2016	FY2017	FY2018	Total
MoDOT	State	ENG	\$400	\$1,400	\$4,200	\$0	\$6,000
MoDOT-AC	State	ENG	\$1,600	\$5,600	\$16,800	\$0	\$24,000
MoDOT	State	CON	\$0	\$0	\$63,400	\$0	\$63,400
MoDOT-AC	State	CON	\$0	\$0	\$253,600	\$0	\$253,600
<b>Totals</b>			<b>\$2,000</b>	<b>\$7,000</b>	<b>\$338,000</b>	<b>\$0</b>	<b>\$347,000</b>

### Notes

Source of State Funds: State transportation revenues.

<b>Prior Cost</b>	\$32,000
<b>Future Cost</b>	\$0
<b>Total Cost</b>	\$379,000



# Transportation Improvement Program - FY 2015-2018

## Project Detail by Section and Project Number with Map

### E) Roadways Section

**TIP #** RG1201      **ROUTE 60 AND ROUTE 125 INTERSECTION**

**Route** US 60 and Route 125

**From** US 60

**To** Route 125

**Location/Agency** City of Rogersville

**Federal Agency** FHWA

**Responsible Agency** MoDOT

**Federal Funding Category** NHPP(NHS)

**MoDOT Funding Category** Taking Care of the System

**AC Year of Conv.** FY 2015, FY 2016

**STIP #** 8P2381



#### Project Description

Intersection improvements at Route 60 and Route 125 in Rogersville.

Fund Code	Source	Phase	FY2015	FY2016	FY2017	FY2018	Total
FHWA (NHPP)	Federal	ENG	\$0	\$800	\$800	\$800	\$2,400
MoDOT	State	ENG	\$400	\$200	\$200	\$200	\$1,000
MoDOT-AC	State	ENG	\$1,600	\$0	\$0	\$0	\$1,600
<b>Totals</b>			<b>\$2,000</b>	<b>\$1,000</b>	<b>\$1,000</b>	<b>\$1,000</b>	<b>\$5,000</b>

#### Notes

Source of State Funds: State transportation revenues.

<b>Prior Cost</b>	\$32,000
<b>Future Cost</b>	\$364,000
<b>Total Cost</b>	\$401,000



# Transportation Improvement Program - FY 2015-2018

## Project Detail by Section and Project Number with Map

### E) Roadways Section

**TIP # RP1401** PAVEMENT IMPROVEMENTS ON ROUTE 60 IN REPUBLIC

**Route** US 60  
**From** Farm Road 194  
**To** Illinois Street

**Location/Agency**

**Federal Agency**

**Responsible Agency** MoDOT

**Federal Funding Category** NHPP(NHS)

**MoDOT Funding Category** Taking Care of the System

**AC Year of Conv.** 2015, 2016

**STIP #** 8P3031



#### Project Description

Pavement improvements on various sections from Farm Road 194 to Illinois Street in Republic.

Fund Code	Source	Phase	FY2015	FY2016	FY2017	FY2018	Total
MoDOT	State	ENG	\$400	\$2,200	\$0	\$0	\$2,600
MoDOT-AC	State	ENG	\$1,600	\$8,800	\$0	\$0	\$10,400
MoDOT	State	CON	\$0	\$38,800	\$0	\$0	\$38,800
MoDOT-AC	State	CON	\$0	\$155,200	\$0	\$0	\$155,200
<b>Totals</b>			<b>\$2,000</b>	<b>\$205,000</b>	<b>\$0</b>	<b>\$0</b>	<b>\$207,000</b>

#### Notes

Source of State Funds: State transportation revenues.

<b>Prior Cost</b>	\$2,000
<b>Future Cost</b>	\$0
<b>Total Cost</b>	\$209,000



# Transportation Improvement Program - FY 2015-2018

## Project Detail by Section and Project Number with Map

### E) Roadways Section

**TIP # RP1401** PAVEMENT IMPROVEMENTS ON ROUTE 60 IN REPUBLIC

**Route** US 60

**From** Farm Road 194

**To** Illinois Street

**Location/Agency** City of Republic

**Federal Agency** FHWA

**Responsible Agency** MoDOT

**Federal Funding Category** NHPP(NHS)

**MoDOT Funding Category** Taking Care of the System

**AC Year of Conv.** FY 2015, FY 2016

**STIP #** 8P3031



#### Project Description

Pavement improvements on various sections from Farm Road 194 to Illinois Street in Republic.

Fund Code	Source	Phase	FY2015	FY2016	FY2017	FY2018	Total
FHWA (NHPP)	Federal	ENG	\$0	\$9,600	\$0	\$0	\$9,600
MoDOT	State	ENG	\$400	\$2,400	\$0	\$0	\$2,800
MoDOT-AC	State	ENG	\$1,600	\$0	\$0	\$0	\$1,600
FHWA (NHPP)	Federal	CON	\$0	\$168,800	\$0	\$0	\$168,800
MoDOT	State	CON	\$0	\$42,200	\$0	\$0	\$42,200
<b>Totals</b>			<b>\$2,000</b>	<b>\$223,000</b>	<b>\$0</b>	<b>\$0</b>	<b>\$225,000</b>

#### Notes

Source of State Funds: State transportation revenues.

<b>Prior Cost</b>	\$2,000
<b>Future Cost</b>	\$0
<b>Total Cost</b>	\$227,000

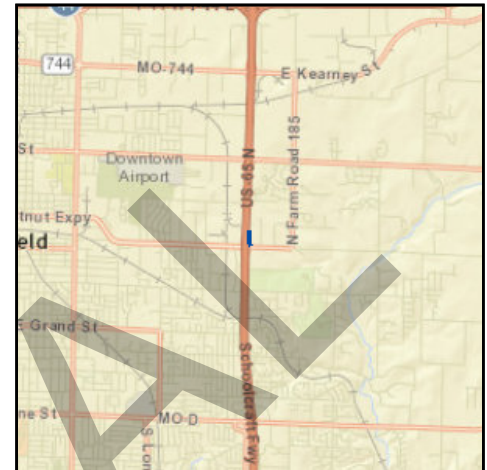


# Transportation Improvement Program - FY 2015-2018

Project Detail by Section and Project Number with Map

## E) Roadways Section

**TIP #** SP1106      **EASTGATE AVENUE RELOCATION**  
**Route** Eastgate Avenue  
**From** North of Chestnut Expressway  
**To** Chestnut Expressway  
**Location/Agency**  
**Federal Agency**  
**Responsible Agency** MoDOT  
**Federal Funding Category** STP  
**MoDOT Funding Category** Major Projects and Emerging Needs  
**AC Year of Conv.** FY 2015, FY 2016, FY 2017, FY  
**STIP #** 8P0850B



### Project Description

Relocation Eastgate Avenue (east outer road) intersection east of Route 65.

Fund Code	Source	Phase	FY2015	FY2016	FY2017	FY2018	Total
MoDOT	State	ENG	\$600	\$400	\$400	\$31,600	\$33,000
MoDOT-AC	State	ENG	\$2,400	\$1,600	\$1,600	\$126,400	\$132,000
MoDOT	State	ROW	\$400	\$0	\$0	\$0	\$400
MoDOT-AC	State	ROW	\$1,600	\$0	\$0	\$0	\$1,600
FHWA (STP)	Federal	CON	\$0	\$0	\$0	\$100,000	\$100,000
LOCAL	Local	CON	\$0	\$0	\$0	\$1,179,000	\$1,179,000
MoDOT	State	CON	\$0	\$0	\$0	\$281,400	\$281,400
MoDOT-AC	State	CON	\$0	\$0	\$0	\$1,125,600	\$1,125,600
<b>Totals</b>			<b>\$5,000</b>	<b>\$2,000</b>	<b>\$2,000</b>	<b>\$2,844,000</b>	<b>\$2,853,000</b>

### Notes

Source of State Funds: State transportation revenues. Source of Local Funds: City of Springfield 1/8-cent transportation sales tax. \$100,000 STP-Urban attributable to Greene County.

<b>Prior Cost</b>	\$73,000
<b>Future Cost</b>	\$0
<b>Total Cost</b>	\$2,926,000



# Transportation Improvement Program - FY 2015-2018

## Project Detail by Section and Project Number with Map

### E) Roadways Section

**TIP #** SP1106      **EASTGATE AVENUE RELOCATION**  
**Route** Eastgate Avenue  
**From** North of Chestnut Expressway  
**To** Chestnut Expressway  
**Location/Agency** City of Springfield  
**Federal Agency** FHWA  
**Responsible Agency** MoDOT  
**Federal Funding Category** STP  
**MoDOT Funding Category** Major Projects and Emerging Needs  
**AC Year of Conv.** FY 2015, FY 2016  
**STIP #** 8P0850B



#### Project Description

Relocation Eastgate Avenue (east outer road) intersection east of Route 65.

Fund Code	Source	Phase	FY2015	FY2016	FY2017	FY2018	Total
FHWA (STP)	Federal	ENG	\$0	\$3,200	\$1,600	\$126,400	\$131,200
MoDOT	State	ENG	\$400	\$600	\$400	\$31,600	\$33,000
MoDOT-AC	State	ENG	\$1,600	\$0	\$0	\$0	\$1,600
MoDOT	State	ROW	\$0	\$400	\$0	\$0	\$400
MoDOT-AC	State	ROW	\$0	\$1,600	\$0	\$0	\$1,600
FHWA (STP)	Federal	CON	\$0	\$0	\$0	\$1,163,200	\$1,163,200
LOCAL	Local	CON	\$0	\$0	\$0	\$1,179,000	\$1,179,000
MoDOT	State	CON	\$0	\$0	\$0	\$265,800	\$265,800
<b>Totals</b>			<b>\$2,000</b>	<b>\$5,800</b>	<b>\$2,000</b>	<b>\$2,766,000</b>	<b>\$2,775,800</b>

#### Notes

Source of State Funds: State transportation revenues. Source of Local Funds: City of Springfield 1/8-cent transportation sales tax. \$100,000 STP-Urban attributable to Greene County.

<b>Prior Cost</b>	\$73,000
<b>Future Cost</b>	\$0
<b>Total Cost</b>	\$2,848,800



# Transportation Improvement Program - FY 2015-2018

Project Detail by Section and Project Number with Map

## E) Roadways Section

**TIP #** SP1112      **ROUTE 65 SOUTHBOUND BRIDGE OVER I-44**

**Route** US 65

**From** US 65

**To** I-44

**Location/Agency**

**Federal Agency**

**Responsible Agency** MoDOT

**Federal Funding Category** NHPP(NHS)

**MoDOT Funding Category** Taking Care of the System

**AC Year of Conv.** FY 2015, FY 2016, FY 2017, FY

**STIP #** 8P2293



### Project Description

Replace Route 65 southbound bridge over I-44 in Springfield.

Fund Code	Source	Phase	FY2015	FY2016	FY2017	FY2018	Total
MoDOT	State	ENG	\$400	\$16,000	\$30,000	\$65,600	\$112,000
MoDOT-AC	State	ENG	\$1,600	\$64,000	\$120,000	\$262,400	\$448,000
FHWA (HPP)	Federal	CON	\$0	\$0	\$0	\$166,134	\$166,134
MoDOT	State	CON	\$0	\$0	\$0	\$726,400	\$726,400
MoDOT-AC	State	CON	\$0	\$0	\$0	\$2,739,466	\$2,739,466
<b>Totals</b>			<b>\$2,000</b>	<b>\$80,000</b>	<b>\$150,000</b>	<b>\$3,960,000</b>	<b>\$4,192,000</b>

### Notes

Source of State Funds: State transportation revenues. Source of \$166,134.42  
Federal Funds: Earmark MO108.

<b>Prior Cost</b>	\$227,000
<b>Future Cost</b>	\$0
<b>Total Cost</b>	\$4,419,000



## Transportation Improvement Program - FY 2015-2018

Project Detail by Section and Project Number with Map

### E) Roadways Section

**TIP #** SP1112      **ROUTE 65 SOUTHBOUND BRIDGE OVER I-44**

**Route** US 65

**From** US 65

**To** I-44

**Location/Agency** City of Springfield

**Federal Agency** FHWA

**Responsible Agency** MoDOT

**Federal Funding Category** NHPP(NHS)

**MoDOT Funding Category** Taking Care of the System

**AC Year of Conv.** FY 2015, FY 2016

**STIP #** 8P2293



#### Project Description

Replace Route 65 southbound bridge over I-44 in Springfield.

Fund Code	Source	Phase	FY2015	FY2016	FY2017	FY2018	Total
FHWA (NHPP)	Federal	ENG	\$0	\$64,000	\$144,000	\$211,200	\$419,200
MoDOT	State	ENG	\$400	\$16,000	\$36,000	\$52,800	\$105,200
MoDOT-AC	State	ENG	\$1,600	\$0	\$0	\$0	\$1,600
FHWA (HPP)	Federal	CON	\$0	\$0	\$0	\$166,134	\$166,134
FHWA (NHPP)	Federal	CON	\$0	\$0	\$0	\$2,589,866	\$2,589,866
MoDOT	State	CON	\$0	\$0	\$0	\$689,000	\$689,000
<b>Totals</b>			<b>\$2,000</b>	<b>\$80,000</b>	<b>\$180,000</b>	<b>\$3,709,000</b>	<b>\$3,971,000</b>

#### Notes

Source of State Funds: State transportation revenues. Source of \$166,134.42  
Federal Funds: Earmark MO108.

<b>Prior Cost</b>	\$227,000
<b>Future Cost</b>	\$0
<b>Total Cost</b>	\$4,198,000



# Transportation Improvement Program - FY 2015-2018

## Project Detail by Section and Project Number with Map

### E) Roadways Section

**TIP #** SP1204      **EVANS ROAD BRIDGE OVER ROUTE 65**

**Route**      Evans Road

**From**      Evans Road

**To**      US 65

**Location/Agency**

**Federal Agency**

**Responsible Agency**      MoDOT

**Federal Funding Category**      NHPP(NHS)

**MoDOT Funding Category**      Taking Care of the System

**AC Year of Conv.**      FY 2015, FY 2016, FY 2017

**STIP #**      802397



#### Project Description

Improvements to the Evans Road bridge over Route 65 in Springfield. Project involves bridge A3107.

Fund Code	Source	Phase	FY2015	FY2016	FY2017	FY2018	Total
MoDOT	State	ENG	\$400	\$400	\$21,800	\$0	\$22,600
MoDOT-AC	State	ENG	\$1,600	\$1,600	\$87,200	\$0	\$90,400
MoDOT	State	CON	\$0	\$0	\$183,400	\$0	\$183,400
MoDOT-AC	State	CON	\$0	\$0	\$733,600	\$0	\$733,600
<b>Totals</b>			<b>\$2,000</b>	<b>\$2,000</b>	<b>\$1,026,000</b>	<b>\$0</b>	<b>\$1,030,000</b>

#### Notes

Source of State Funds: State transportation revenues.

<b>Prior Cost</b>	\$15,000
<b>Future Cost</b>	\$0
<b>Total Cost</b>	\$1,045,000



## Transportation Improvement Program - FY 2015-2018

### Project Detail by Section and Project Number with Map

#### E) Roadways Section

**TIP #** SP1204      **EVANS ROAD BRIDGE OVER ROUTE 65**

**Route** Evans Road

**From** Evans Road

**To** US 65

**Location/Agency** City of Springfield

**Federal Agency** FHWA

**Responsible Agency** MoDOT

**Federal Funding Category** NHPP(NHS)

**MoDOT Funding Category** Taking Care of the System

**AC Year of Conv.** FY 2015, FY 2016

**STIP #** 802397



#### Project Description

Improvements to the Evans Road bridge over Route 65 in Springfield. Project involves bridge A3107.

Fund Code	Source	Phase	FY2015	FY2016	FY2017	FY2018	Total
FHWA (NHPP)	Federal	ENG	\$0	\$1,600	\$32,800	\$42,400	\$76,800
MoDOT	State	ENG	\$400	\$400	\$8,200	\$10,600	\$19,600
MoDOT-AC	State	ENG	\$1,600	\$0	\$0	\$0	\$1,600
FHWA (NHPP)	Federal	CON	\$0	\$0	\$0	\$675,000	\$675,000
MoDOT	State	CON	\$0	\$0	\$0	\$168,800	\$168,800
<b>Totals</b>			<b>\$2,000</b>	<b>\$2,000</b>	<b>\$41,000</b>	<b>\$896,800</b>	<b>\$941,800</b>

#### Notes

Source of State Funds: State transportation revenues.

<b>Prior Cost</b>	\$15,000
<b>Future Cost</b>	\$0
<b>Total Cost</b>	\$956,800



# Transportation Improvement Program - FY 2015-2018

Project Detail by Section and Project Number with Map

## E) Roadways Section

**TIP # SP1323** INTERSECTION IMPROVEMENTS AT KEARNEY ST. AND PACKER AVE.

**Route** Rte. 744

**From** Kearney Street

**To** Packer Avenue.

**Location/Agency**

**Federal Agency**

**Responsible Agency** MoDOT

**Federal Funding Category** NHPP(NHS)

**MoDOT Funding Category** Major Projects and Emerging Needs

**AC Year of Conv.** FY 2015 and FY 2016

**STIP #** 8S3019



### Project Description

Intersection improvements at Kearney Street (Rte. 744) and Packer Avenue in Springfield.

Fund Code	Source	Phase	FY2015	FY2016	FY2017	FY2018	Total
MoDOT	State	ENG	\$19,600	\$36,800	\$0	\$0	\$56,400
MoDOT-AC	State	ENG	\$78,400	\$147,200	\$0	\$0	\$225,600
FHWA (STP-U)	Federal	ROW	\$47,000	\$0	\$0	\$0	\$47,000
LOCAL	Local	ROW	\$10,000	\$0	\$0	\$0	\$10,000
MoDOT	State	ROW	\$13,000	\$0	\$0	\$0	\$13,000
MoDOT-AC	State	ROW	\$48,000	\$0	\$0	\$0	\$48,000
FHWA (STP-U)	Federal	CON	\$0	\$681,000	\$0	\$0	\$681,000
LOCAL	Local	CON	\$0	\$172,000	\$0	\$0	\$172,000
MoDOT	State	CON	\$0	\$119,800	\$0	\$0	\$119,800
MoDOT-AC	State	CON	\$0	\$479,200	\$0	\$0	\$479,200
<b>Totals</b>			<b>\$216,000</b>	<b>\$1,636,000</b>	<b>\$0</b>	<b>\$0</b>	<b>\$1,852,000</b>

### Notes

Source of State Funds: MoDOT operating budget. Source of Local Funds: Springfield 1/8-cent transportation sales tax. \$582,977 MoDOT Cost Share Program. \$728,721 Springfield STP-Urban. \$182,180 Springfield 1/8-cent.

<b>Prior Cost</b>	\$12,000
<b>Future Cost</b>	\$0
<b>Total Cost</b>	\$1,864,000



## Transportation Improvement Program - FY 2015-2018

Project Detail by Section and Project Number with Map

### E) Roadways Section

**TIP # SP1323** INTERSECTION IMPROVEMENTS AT KEARNEY ST. AND PACKER AVE.

**Route** Rte. 744

**From** Kearney Street

**To** Packer Avenue.

**Location/Agency** City of Springfield

**Federal Agency** FHWA

**Responsible Agency** MoDOT

**Federal Funding Category** NHPP(NHS)

**MoDOT Funding Category** Major Projects and Emerging Needs

**AC Year of Conv.** FY 2015, FY 2016, FY 2017

**STIP #** 8S3019



#### Project Description

Intersection improvements at Kearney Street (Rte. 744) and Packer Avenue in Springfield.

Fund Code	Source	Phase	FY2015	FY2016	FY2017	FY2018	Total
FHWA (NHPP)	Federal	ENG	\$0	\$147,200	\$0	\$0	\$147,200
LOCAL	Local	ENG	\$0	\$116,281	\$0	\$0	\$116,281
MoDOT	State	ENG	\$19,600	\$36,800	\$0	\$0	\$56,400
MoDOT-AC	State	ENG	\$78,400	\$0	\$0	\$0	\$78,400
FHWA (STP-U)	Federal	ROW	\$47,000	\$0	\$0	\$0	\$47,000
LOCAL	Local	ROW	\$10,000	\$145,000	\$0	\$0	\$155,000
MoDOT	State	ROW	\$12,200	\$0	\$0	\$0	\$12,200
MoDOT-AC	State	ROW	\$48,800	\$0	\$0	\$0	\$48,800
FHWA (STP-U)	Federal	CON	\$0	\$681,000	\$0	\$0	\$681,000
LOCAL	Local	CON	\$0	\$644,260	\$0	\$0	\$644,260
MoDOT	State	CON	\$0	\$76,115	\$0	\$0	\$76,115
MoDOT-AC	State	CON	\$0	\$484,440	\$0	\$0	\$484,440
<b>Totals</b>			<b>\$216,000</b>	<b>\$2,331,096</b>	<b>\$0</b>	<b>\$0</b>	<b>\$2,547,096</b>

#### Notes

Source of State Funds: MoDOT operating budget. Source of Local Funds: Springfield 1/8-cent transportation sales tax - \$582,977 MoDOT Cost Share Program, \$728,721 Springfield STP-Urban, \$326,960 Springfield 1/8-cent, \$588,540 Private.

<b>Prior Cost</b>	\$12,000
<b>Future Cost</b>	\$0
<b>Total Cost</b>	\$2,559,096





## Transportation Improvement Program - FY 2015-2018

Project Detail by Section and Project Number with Map

### E) Roadways Section

**TIP # SP1401** SIGNAL REPLACEMENT PROGRAM - KANSAS EXPRESSWAY

**Route** Kansas Expressway (Route 13)

**From** Sunset Street

**To** Walnut Lawn Street

**Location/Agency** City of Springfield

**Federal Agency** FHWA

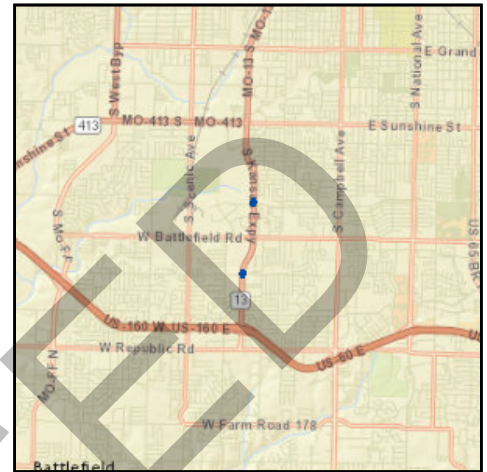
**Responsible Agency** MoDOT

**Federal Funding Category** NHPP(NHS)

**MoDOT Funding Category** Taking Care of the System

**AC Year of Conv.** FY 2015, FY 2016, FY 2017

**STIP #** 8P2390





# Transportation Improvement Program - FY 2015-2018

Project Detail by Section and Project Number with Map

## E) Roadways Section

**TIP #** SP1403      **PAYMENT FOR TRAFFIC SENSING EQUIPMENT AT VARIOUS LOCATIONS**

**Route**      Various

**From**      Various

**To**      Various

**Location/Agency**

**Federal Agency**

**Responsible Agency**      MoDOT

**Federal Funding Category**      STP

**MoDOT Funding Category**      Major Projects and Emerging Needs

**AC Year of Conv.**      FY 2017

**STIP #**      8P3030



### Project Description

Installation of traffic sensing equipment at various locations in the OTO area.

Fund Code	Source	Phase	FY2015	FY2016	FY2017	FY2018	Total
MoDOT	State	ENG	\$200	\$0	\$0	\$0	\$200
MoDOT-AC	State	ENG	\$800	\$0	\$0	\$0	\$800
MoDOT	State	CON	\$120,000	\$0	\$0	\$0	\$120,000
MoDOT-AC	State	CON	\$480,000	\$0	\$0	\$0	\$480,000
<b>Totals</b>			<b>\$601,000</b>	<b>\$0</b>	<b>\$0</b>	<b>\$0</b>	<b>\$601,000</b>

### Notes

Source of State Funds: State transportation revenues.

<b>Prior Cost</b>	\$1,000
<b>Future Cost</b>	\$0
<b>Total Cost</b>	\$602,000



## Transportation Improvement Program - FY 2015-2018

Project Detail by Section and Project Number with Map

### E) Roadways Section

**TIP #** SP1403      **PAYMENT FOR TRAFFIC SENSING EQUIPMENT AT VARIOUS LOCATIONS**

**Route**      Various

**From**      Various

**To**      Various

**Location/Agency**      City of Springfield

**Federal Agency**      FHWA

**Responsible Agency**      MoDOT

**Federal Funding Category**      STP

**MoDOT Funding Category**      Major Projects and Emerging Needs

**AC Year of Conv.**

**STIP #**      8P3030



#### Project Description

Installation of traffic sensing equipment at various locations in the OTO area.

Fund Code	Source	Phase	FY2015	FY2016	FY2017	FY2018	Total
FHWA (STP)	Federal	ENG	\$800	\$0	\$0	\$0	\$800
MoDOT	State	ENG	\$400	\$0	\$0	\$0	\$400
MoDOT-AC	State	ENG	\$800	\$0	\$0	\$0	\$800
FHWA (STP)	Federal	CON	\$480,000	\$0	\$0	\$0	\$480,000
MoDOT	State	CON	\$120,000	\$0	\$0	\$0	\$120,000
<b>Totals</b>			<b>\$602,000</b>	<b>\$0</b>	<b>\$0</b>	<b>\$0</b>	<b>\$602,000</b>

#### Notes

Source of State Funds: State transportation revenues.

<b>Prior Cost</b>	\$1,000
<b>Future Cost</b>	\$0
<b>Total Cost</b>	\$603,000

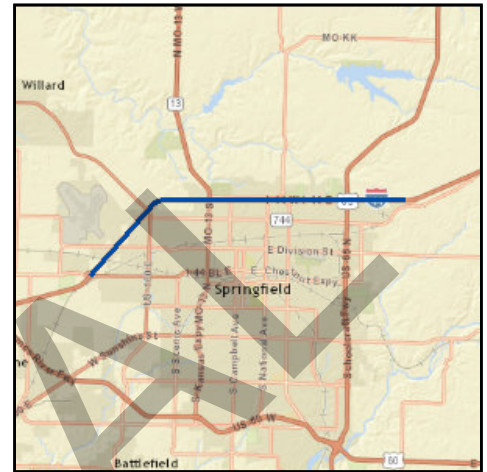


# Transportation Improvement Program - FY 2015-2018

Project Detail by Section and Project Number with Map

## E) Roadways Section

**TIP #** SP1409      I-44 PAVEMENT IMPROVEMENTS  
**Route** I-44  
**From** Rte. 266  
**To** 2.0 miles east of US 65  
**Location/Agency**  
**Federal Agency**  
**Responsible Agency** MoDOT  
**Federal Funding Category** NHPP(I/M)  
**MoDOT Funding Category** Statewide Interstate and Major Bridge  
**AC Year of Conv.** FY 2015, FY 2016, FY 2017  
**STIP #** 8I3000



### Project Description

Pavement treatment on various sections of I-44 from Chestnut Expressway (Rte. 266) to 2.0 miles east of Rte. 65.

Fund Code	Source	Phase	FY2015	FY2016	FY2017	FY2018	Total
MoDOT	State	ENG	\$7,300	\$55,300	\$0	\$0	\$62,600
MoDOT-AC	State	ENG	\$65,700	\$497,700	\$0	\$0	\$563,400
MoDOT	State	CON	\$0	\$941,100	\$0	\$0	\$941,100
MoDOT-AC	State	CON	\$0	\$8,469,900	\$0	\$0	\$8,469,900
<b>Totals</b>			<b>\$73,000</b>	<b>\$9,964,000</b>	<b>\$0</b>	<b>\$0</b>	<b>\$10,037,000</b>

### Notes

Source of State Funds: State transportation revenues. Previously TIP Number GR1308.

<b>Prior Cost</b>	\$4,000
<b>Future Cost</b>	\$0
<b>Total Cost</b>	\$10,041,000

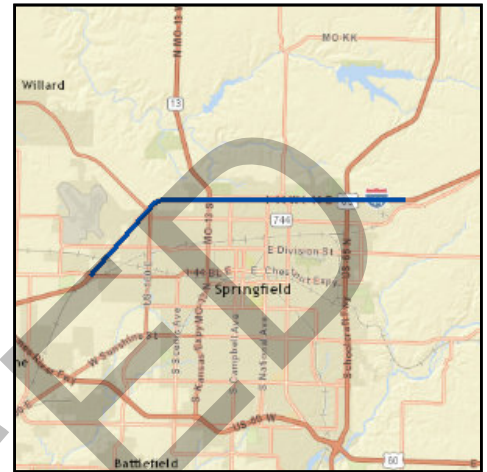


# Transportation Improvement Program - FY 2015-2018

## Project Detail by Section and Project Number with Map

### E) Roadways Section

**TIP #** SP1409      I-44 PAVEMENT IMPROVEMENTS  
**Route** I-44  
**From** Rte. 266  
**To** 2.0 miles east of US 65  
**Location/Agency** City of Springfield  
**Federal Agency** FHWA  
**Responsible Agency** MoDOT  
**Federal Funding Category** NHPP(I/M)  
**MoDOT Funding Category** Statewide Interstate and Major Bridge  
**AC Year of Conv.** FY 2015, FY 2016, FY 2017  
**STIP #** 8I3000



#### Project Description

Pavement treatment on various sections of I-44 from Chestnut Expressway (Rte. 266) to 2.0 miles east of Rte. 65.

Fund Code	Source	Phase	FY2015	FY2016	FY2017	FY2018	Total
FHWA (NHPP)	Federal	ENG	\$0	\$477,900	\$0	\$0	\$477,900
MoDOT	State	ENG	\$7,300	\$53,100	\$0	\$0	\$60,400
MoDOT-AC	State	ENG	\$65,700	\$0	\$0	\$0	\$65,700
FHWA (NHPP)	Federal	CON	\$0	\$6,779,100	\$0	\$0	\$6,779,100
FHWA	Federal	CON	\$0	\$258,000	\$0	\$0	\$258,000
MoDOT	State	CON	\$0	\$781,900	\$0	\$0	\$781,900
<b>Totals</b>			<b>\$73,000</b>	<b>\$8,350,000</b>	<b>\$0</b>	<b>\$0</b>	<b>\$8,423,000</b>

#### Notes

Source of State Funds: State transportation revenues. Previously TIP Number GR1308.

<b>Prior Cost</b>	\$4,000
<b>Future Cost</b>	\$0
<b>Total Cost</b>	\$8,427,000



# Transportation Improvement Program - FY 2015-2018

## Project Detail by Section and Project Number with Map

### E) Roadways Section

**TIP #** SP1410      **ROUTE 65 IMPROVEMENTS**

**Route** US 65

**From** US 60

**To** 0.7 mile south of Evans Road

**Location/Agency**

**Federal Agency**

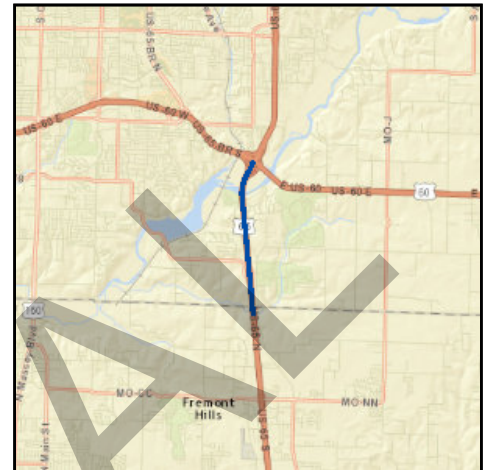
**Responsible Agency** MoDOT

**Federal Funding Category** NHPP(NHS)

**MoDOT Funding Category** Major Projects and Emerging Needs

**AC Year of Conv.** FY 2015, FY 2016

**STIP #** 8P0605G



#### Project Description

Various operational and roadway improvements from US 60 (James River Freeway) to 0.7 miles south of Evans Road.

Fund Code	Source	Phase	FY2015	FY2016	FY2017	FY2018	Total
MoDOT	State	ENG	\$40,000	\$152,000	\$0	\$0	\$192,000
MoDOT-AC	State	ENG	\$160,000	\$608,000	\$0	\$0	\$768,000
MoDOT	State	CON	\$0	\$1,681,000	\$0	\$0	\$1,681,000
MoDOT-AC	State	CON	\$0	\$6,724,000	\$0	\$0	\$6,724,000
<b>Totals</b>			<b>\$200,000</b>	<b>\$9,165,000</b>	<b>\$0</b>	<b>\$0</b>	<b>\$9,365,000</b>

#### Notes

Source of State Funds: State transportation revenues.

<b>Prior Cost</b>	\$2,000
<b>Future Cost</b>	\$0
<b>Total Cost</b>	\$9,367,000



# Transportation Improvement Program - FY 2015-2018

## Project Detail by Section and Project Number with Map

### E) Roadways Section

**TIP #** SP1410      **ROUTE 65 IMPROVEMENTS**  
**Route** US 65  
**From** US 60  
**To** 0.7 mile south of Evans Road  
**Location/Agency** City of Springfield  
**Federal Agency** FHWA  
**Responsible Agency** MoDOT  
**Federal Funding Category** NHPP(NHS)  
**MoDOT Funding Category** Major Projects and Emerging Needs  
**AC Year of Conv.** FY 2015, FY 2016/2017  
**STIP #** 8P0605G



#### Project Description

Various operational and roadway improvements from US 60 (James River Freeway) to 0.7 miles south of Evans Road.

Fund Code	Source	Phase	FY2015	FY2016	FY2017	FY2018	Total
MoDOT	State	ENG	\$40,000	\$401,000	\$0	\$0	\$441,000
MoDOT-AC	State	ENG	\$160,000	\$1,604,000	\$0	\$0	\$1,764,000
MoDOT	State	CON	\$0	\$2,502,200	\$0	\$0	\$2,502,200
MoDOT-AC	State	CON	\$0	\$10,008,800	\$0	\$0	\$10,008,800
<b>Totals</b>			<b>\$200,000</b>	<b>\$14,516,000</b>	<b>\$0</b>	<b>\$0</b>	<b>\$14,716,000</b>

#### Notes

Source of State Funds: State transportation revenues.

<b>Prior Cost</b>	\$2,000
<b>Future Cost</b>	\$0
<b>Total Cost</b>	\$14,718,000



# Transportation Improvement Program - FY 2015-2018

Project Detail by Section and Project Number with Map

## E) Roadways Section

**TIP #** SP1415      **ROUTE 65 AND DIVISION STREET INTERCHANGE**

**Route** US 65

**From** Division St.

**To** Rte. YY

**Location/Agency**

**Federal Agency**

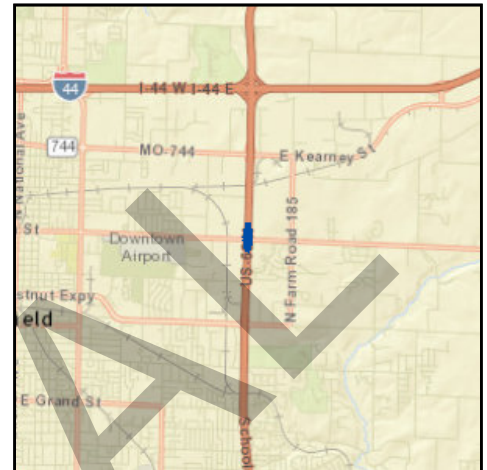
**Responsible Agency** MoDOT

**Federal Funding Category** NHPP(NHS)

**MoDOT Funding Category** Major Projects and Emerging Needs

**AC Year of Conv.** FY 2015, FY 2016, FY 2017

**STIP #** 8P3036



### Project Description

Interchange improvements at US 65 and Division Street (Rte. YY).

Fund Code	Source	Phase	FY2015	FY2016	FY2017	FY2018	Total
MoDOT	State	ENG	\$22,800	\$20,000	\$22,400	\$0	\$65,200
MoDOT-AC	State	ENG	\$91,200	\$80,000	\$89,600	\$0	\$260,800
FHWA (STP-U)	Federal	ROW	\$0	\$734,000	\$0	\$0	\$734,000
LOCAL	Local	ROW	\$0	\$184,000	\$0	\$0	\$184,000
MoDOT	State	ROW	\$0	\$54,000	\$0	\$0	\$54,000
MoDOT-AC	State	ROW	\$0	\$218,000	\$0	\$0	\$218,000
FHWA (STP-U)	Federal	CON	\$0	\$0	\$1,089,292	\$0	\$1,089,292
LOCAL	Local	CON	\$0	\$0	\$271,823	\$0	\$271,823
MoDOT	State	CON	\$0	\$0	\$304,377	\$0	\$304,377
MoDOT-AC	State	CON	\$0	\$0	\$1,215,508	\$0	\$1,215,508
<b>Totals</b>			<b>\$114,000</b>	<b>\$1,290,000</b>	<b>\$2,993,000</b>	<b>\$0</b>	<b>\$4,397,000</b>

### Notes

Source of State Funds: State transportation revenues. Source of Local Funds: Springfield 1/8-cent transportation sales tax. \$1,519,395 MoDOT Cost Share Program, \$1,823,292 Springfield STP-Urban, \$455,823 Springfield Local.

<b>Prior Cost</b>	\$10,000
<b>Future Cost</b>	\$0
<b>Total Cost</b>	\$4,407,000



# Transportation Improvement Program - FY 2015-2018

Project Detail by Section and Project Number with Map

## E) Roadways Section

**TIP #** SP1415      **ROUTE 65 AND DIVISION STREET INTERCHANGE**

**Route** US 65

**From** Division St.

**To** Rte. YY

**Location/Agency** City of Springfield

**Federal Agency** FHWA

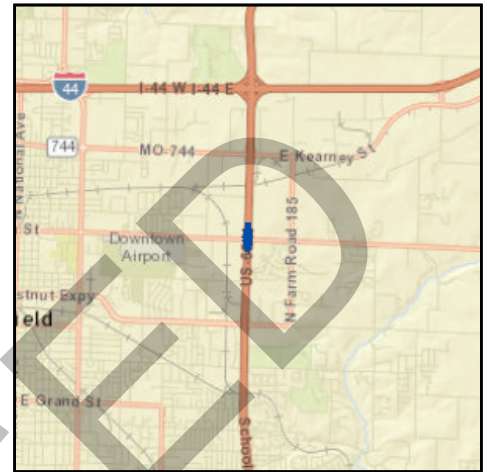
**Responsible Agency** MoDOT

**Federal Funding Category** NHPP(NHS)

**MoDOT Funding Category** Major Projects and Emerging Needs

**AC Year of Conv.** FY 2015, FY 2016

**STIP #** 8P3036



### Project Description

Interchange improvements at US 65 and Division Street (Rte. YY).

Fund Code	Source	Phase	FY2015	FY2016	FY2017	FY2018	Total
FHWA (NHPP)	Federal	ENG	\$0	\$84,000	\$89,600	\$0	\$173,600
MoDOT	State	ENG	\$21,800	\$21,000	\$22,400	\$0	\$65,200
MoDOT-AC	State	ENG	\$87,200	\$0	\$0	\$0	\$87,200
FHWA (NHPP)	Federal	ROW	\$0	\$218,000	\$0	\$0	\$218,000
FHWA (STP-U)	Federal	ROW	\$0	\$734,000	\$0	\$0	\$734,000
LOCAL	Local	ROW	\$0	\$184,000	\$0	\$0	\$184,000
MoDOT	State	ROW	\$0	\$54,000	\$0	\$0	\$54,000
FHWA (NHPP)	Federal	CON	\$0	\$0	\$1,284,308	\$0	\$1,284,308
FHWA (STP-U)	Federal	CON	\$0	\$0	\$1,089,292	\$0	\$1,089,292
LOCAL	Local	CON	\$0	\$0	\$271,823	\$0	\$271,823
MoDOT	State	CON	\$0	\$0	\$321,577	\$0	\$321,577
<b>Totals</b>			<b>\$109,000</b>	<b>\$1,295,000</b>	<b>\$3,079,000</b>	<b>\$0</b>	<b>\$4,483,000</b>

### Notes

Source of State Funds: State transportation revenues. Source of Local Funds: Springfield 1/8-cent transportation sales tax. \$1,519,395 MoDOT Cost Share Program, \$1,823,292 Springfield STP-Urban, \$455,823 Springfield Local.

<b>Prior Cost</b>	\$10,000
<b>Future Cost</b>	\$0
<b>Total Cost</b>	\$4,493,000



# Transportation Improvement Program - FY 2015-2018

## Project Detail by Section and Project Number with Map

### E) Roadways Section

**TIP #** WI1301 **WILLARD INTERSECTION IMPROVEMENTS**

**Route** Route 160

**From** Route AB

**To** Miller Road

**Location/Agency**

**Federal Agency**

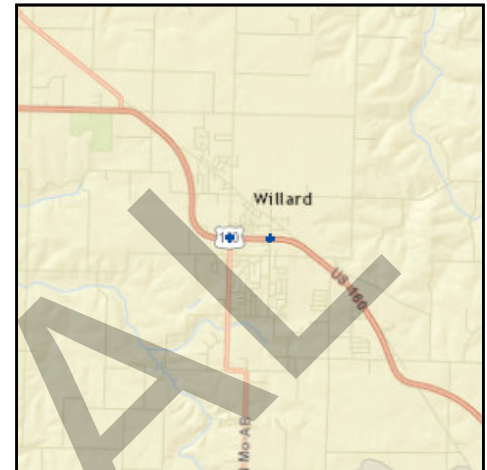
**Responsible Agency** MoDOT

**Federal Funding Category** STP

**MoDOT Funding Category** Taking Care of the System

**AC Year of Conv.** FY 2015, FY 2016, FY 2017

**STIP #** 8P2389



#### Project Description

Intersection improvements on Route 160 at Route AB and Miller Road in Willard.

Fund Code	Source	Phase	FY2015	FY2016	FY2017	FY2018	Total
MoDOT	State	ENG	\$1,000	\$10,000	\$24,200	\$0	\$35,200
MoDOT-AC	State	ENG	\$4,000	\$40,000	\$96,800	\$0	\$140,800
MoDOT	State	CON	\$0	\$0	\$140,600	\$0	\$140,600
MoDOT-AC	State	CON	\$0	\$0	\$562,400	\$0	\$562,400
<b>Totals</b>			<b>\$5,000</b>	<b>\$50,000</b>	<b>\$824,000</b>	<b>\$0</b>	<b>\$879,000</b>

#### Notes

Source of State Funds: State transportation revenues.

<b>Prior Cost</b>	\$5,000
<b>Future Cost</b>	\$0
<b>Total Cost</b>	\$884,000



# Transportation Improvement Program - FY 2015-2018

## Project Detail by Section and Project Number with Map

### E) Roadways Section

**TIP #** WI1301 **WILLARD INTERSECTION IMPROVEMENTS**

**Route** Route 160

**From** Route AB

**To** Miller Road

**Location/Agency** City of Willard

**Federal Agency** FHWA

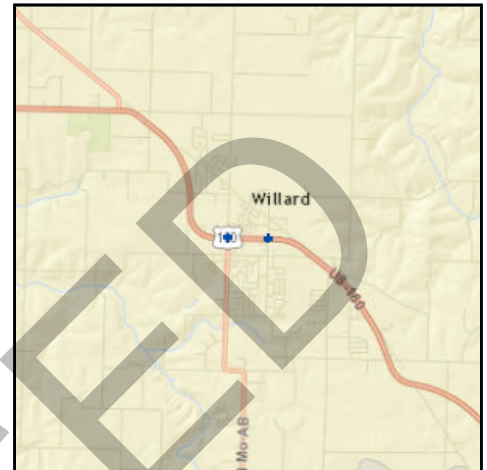
**Responsible Agency** MoDOT

**Federal Funding Category** STP

**MoDOT Funding Category** Taking Care of the System

**AC Year of Conv.** FY 2015

**STIP #** 8P2389



#### Project Description

Intersection improvements on Route 160 at Route AB and Miller Road in Willard.

Fund Code	Source	Phase	FY2015	FY2016	FY2017	FY2018	Total
FHWA (STP)	Federal	ENG	\$0	\$40,000	\$96,800	\$0	\$136,800
MoDOT	State	ENG	\$1,000	\$10,000	\$24,200	\$0	\$35,200
MoDOT-AC	State	ENG	\$4,000	\$0	\$0	\$0	\$4,000
FHWA (STP)	Federal	CON	\$0	\$0	\$546,400	\$0	\$546,400
MoDOT	State	CON	\$0	\$0	\$136,600	\$0	\$136,600
<b>Totals</b>			<b>\$5,000</b>	<b>\$50,000</b>	<b>\$804,000</b>	<b>\$0</b>	<b>\$859,000</b>

#### Notes

Source of State Funds: State transportation revenues.

<b>Prior Cost</b>	\$5,000
<b>Future Cost</b>	\$0
<b>Total Cost</b>	\$864,000



## Transportation Improvement Program - FY 2015-2018

### Project Detail by Section and Project Number with Map

#### E) Roadways Section

**TIP #** GR1602 I-44 PAVEMENT IMPROVEMENTS EAST OF STRAFFORD

**Route** I-44

**From** 0.5 e/o Rte. 125

**To** Webster County line

**Location/Agency** Greene County

**Federal Agency** FHWA

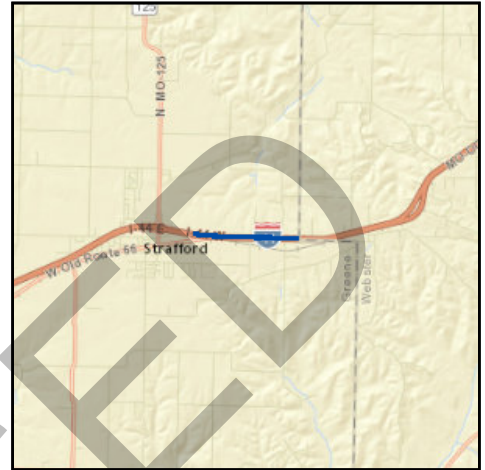
**Responsible Agency** MoDOT

**Federal Funding Category** NHPP

**MoDOT Funding Category** Statewide Interstate and Major Bridge

**AC Year of Conv.**

**STIP #** 8I3047



#### Project Description

Pavement improvements on disconnected sections of I-44 from 0.5 mile east of Rte. 125 to the Webster County line.

Fund Code	Source	Phase	FY2015	FY2016	FY2017	FY2018	Total
FHWA (NHPP)	Federal	ENG	\$0	\$4,500	\$48,600	\$0	\$53,100
MoDOT	State	ENG	\$0	\$500	\$5,400	\$0	\$5,900
FHWA (NHPP)	Federal	CON	\$0	\$0	\$464,400	\$0	\$464,400
MoDOT	State	CON	\$0	\$0	\$51,600	\$0	\$51,600
<b>Totals</b>			<b>\$0</b>	<b>\$5,000</b>	<b>\$570,000</b>	<b>\$0</b>	<b>\$575,000</b>

#### Notes

Source of state funds: state transportation revenues. Statewide Interstate and Major Bridge program.

<b>Prior Cost</b>	\$0
<b>Future Cost</b>	\$0
<b>Total Cost</b>	\$575,000



## Transportation Improvement Program - FY 2015-2018

Project Detail by Section and Project Number with Map

### E) Roadways Section

**TIP #** MO1606      I-44 PAVEMENT REPAIR  
**Route** I-44  
**From** e/o Rte. 360  
**To** Webster County line  
**Location/Agency** Area Wide  
**Federal Agency** FHWA  
**Responsible Agency** MoDOT  
**Federal Funding Category** NHPP(I/M)  
**MoDOT Funding Category** Taking Care of the System  
**AC Year of Conv.**  
**STIP #** 0130020



#### Project Description

Job Order Contracting for I-44 pavement repair in the Ozarks Transportation Organization area.

Fund Code	Source	Phase	FY2015	FY2016	FY2017	FY2018	Total
FHWA (NHPP)	Federal	ENG	\$0	\$14,400	\$0	\$0	\$14,400
MoDOT	State	ENG	\$0	\$1,600	\$0	\$0	\$1,600
FHWA (NHPP)	Federal	CON	\$0	\$180,000	\$0	\$0	\$180,000
MoDOT	State	CON	\$0	\$20,000	\$0	\$0	\$20,000
<b>Totals</b>			<b>\$0</b>	<b>\$216,000</b>	<b>\$0</b>	<b>\$0</b>	<b>\$216,000</b>

#### Notes

Source of state funds: state transportation revenues.

**Prior Cost** \$0  
**Future Cost** \$0  
**Total Cost** \$216,000



# Transportation Improvement Program - FY 2015-2018

Project Detail by Section and Project Number with Map

## E) Roadways Section

**TIP #** MO1607 RESURFACING ON VARIOUS PRIMARY ROUTES

**Route** Various

**From** N/A

**To** N/A

**Location/Agency** Area Wide

**Federal Agency** FHWA

**Responsible Agency** MoDOT

**Federal Funding Category** NHPP(NHS)

**MoDOT Funding Category** Taking Care of the System

**AC Year of Conv.**

**STIP #** 8P3050



### Project Description

Pavement improvements on primary routes in the OTO area.

Fund Code	Source	Phase	FY2015	FY2016	FY2017	FY2018	Total
FHWA (NHPP)	Federal	ENG	\$0	\$8,000	\$8,000	\$24,800	\$40,800
MoDOT	State	ENG	\$0	\$2,000	\$2,000	\$6,200	\$10,200
<b>Totals</b>			<b>\$0</b>	<b>\$10,000</b>	<b>\$10,000</b>	<b>\$31,000</b>	<b>\$51,000</b>

### Notes

Source of MoDOT funds: State transportation revenues.

<b>Prior Cost</b>	\$0
<b>Future Cost</b>	\$6,638,000
<b>Total Cost</b>	\$6,689,000



## Transportation Improvement Program - FY 2015-2018

Project Detail by Section and Project Number with Map

### E) Roadways Section

**TIP # MO1608** ANNUAL ON-CALL WORK ZONE ENFORCEMENT PROGRAM

**Route** Various

**From** N/A

**To** N/A

**Location/Agency** Area Wide

**Federal Agency** FHWA

**Responsible Agency** MoDOT

**Federal Funding Category** Safety

**MoDOT Funding Category** Safety

**AC Year of Conv.**

**STIP #** 8P3054



#### Project Description

On-call work zone enforcement in the OTO area.

Fund Code	Source	Phase	FY2015	FY2016	FY2017	FY2018	Total
FHWA	Federal	ENG	\$0	\$900	\$2,700	\$0	\$3,600
MoDOT	State	ENG	\$0	\$100	\$300	\$0	\$400
FHWA	Federal	PMT	\$0	\$0	\$36,900	\$0	\$36,900
MoDOT	State	PMT	\$0	\$0	\$4,100	\$0	\$4,100
<b>Totals</b>			<b>\$0</b>	<b>\$1,000</b>	<b>\$44,000</b>	<b>\$0</b>	<b>\$45,000</b>

#### Notes

Source of MoDOT funds: State transportation revenues.

<b>Prior Cost</b>	\$0
<b>Future Cost</b>	\$0
<b>Total Cost</b>	\$45,000



## Transportation Improvement Program - FY 2015-2018

Project Detail by Section and Project Number with Map

### E) Roadways Section

**TIP #** MO1609      SCOPING FOR BRIDGE IMPROVEMENTS

**Route**      Various

**From**      N/A

**To**      N/A

**Location/Agency**      Area Wide

**Federal Agency**      FHWA

**Responsible Agency**      MoDOT

**Federal Funding Category**

**MoDOT Funding Category** Taking Care of the System

**AC Year of Conv.** FY 2017, FY 2018, FY 2019, FY

**STIP #**      8P3052



#### Project Description

Scoping for bridge improvements in the OTO area.

Fund Code	Source	Phase	FY2015	FY2016	FY2017	FY2018	Total
MoDOT	State	ENG	\$0	\$2,000	\$2,000	\$2,000	\$6,000
MoDOT-AC	State	ENG	\$0	\$8,000	\$8,000	\$8,000	\$24,000
<b>Totals</b>			<b>\$0</b>	<b>\$10,000</b>	<b>\$10,000</b>	<b>\$10,000</b>	<b>\$30,000</b>

#### Notes

Source of MoDOT funds: State transportation revenues.

<b>Prior Cost</b>	\$0
<b>Future Cost</b>	\$10,000
<b>Total Cost</b>	\$40,000



## Transportation Improvement Program - FY 2015-2018

Project Detail by Section and Project Number with Map

### E) Roadways Section

**TIP #** MO1610 SCOPING FOR VARIOUS SAFETY IMPROVEMENTS

**Route** Various

**From** N/A

**To** N/A

**Location/Agency** Area Wide

**Federal Agency** FHWA

**Responsible Agency** MoDOT

**Federal Funding Category** Safety

**MoDOT Funding Category** Safety

**AC Year of Conv.** FY 2017, FY 2018, FY 2019, FY

**STIP #** 8P3053



#### Project Description

Scoping for safety improvements at various locations in the OTO area.

Fund Code	Source	Phase	FY2015	FY2016	FY2017	FY2018	Total
MoDOT	State	ENG	\$0	\$2,000	\$2,000	\$2,000	\$6,000
MoDOT-AC	State	ENG	\$0	\$8,000	\$8,000	\$8,000	\$24,000
<b>Totals</b>			<b>\$0</b>	<b>\$10,000</b>	<b>\$10,000</b>	<b>\$10,000</b>	<b>\$30,000</b>

#### Notes

Source of MoDOT funds: State transportation revenues.

<b>Prior Cost</b>	\$0
<b>Future Cost</b>	\$10,000
<b>Total Cost</b>	\$40,000



# Transportation Improvement Program - FY 2015-2018

Project Detail by Section and Project Number with Map

## E) Roadways Section

**TIP #** MO1611 SCOPING FOR RESURFACING ON VARIOUS PRIMARY ROUTES

**Route** Various

**From** N/A

**To** N/A

**Location/Agency** Area Wide

**Federal Agency** FHWA

**Responsible Agency** MoDOT

**Federal Funding Category** NHPP(NHS)

**MoDOT Funding Category** Taking Care of the System

**AC Year of Conv.** FY 2017, FY 2018, FY 2019, FY

**STIP #** 8P3051



### Project Description

Scoping for pavement improvements on primary routes in the OTO area.

Fund Code	Source	Phase	FY2015	FY2016	FY2017	FY2018	Total
MoDOT	State	ENG	\$0	\$2,000	\$2,000	\$2,000	\$6,000
MoDOT-AC	State	ENG	\$0	\$8,000	\$8,000	\$8,000	\$24,000
<b>Totals</b>			<b>\$0</b>	<b>\$10,000</b>	<b>\$10,000</b>	<b>\$10,000</b>	<b>\$30,000</b>

### Notes

Source of MoDOT funds: State transportation revenues.

<b>Prior Cost</b>	\$0
<b>Future Cost</b>	\$10,000
<b>Total Cost</b>	\$40,000



# Transportation Improvement Program - FY 2015-2018

Project Detail by Section and Project Number with Map

## E) Roadways Section

**TIP # SP1601** JAMES RIVER FREEWAY PAVEMENT IMPROVEMENTS

**Route** 60

**From** Kansas Expressway

**To** w/o Rte. 65

**Location/Agency** City of Springfield

**Federal Agency** FHWA

**Responsible Agency** MoDOT

**Federal Funding Category** NHPP(NHS)

**MoDOT Funding Category** Taking Care of the System

**AC Year of Conv.**

**STIP #** 8P3049



### Project Description

Pavement improvements from Rte. 13 (Kansas Expressway) to 0.7 mile west of Rte. 65 in Springfield

Fund Code	Source	Phase	FY2015	FY2016	FY2017	FY2018	Total
FHWA (NHPP)	Federal	ENG	\$0	\$16,000	\$0	\$0	\$16,000
MoDOT	State	ENG	\$0	\$4,000	\$0	\$0	\$4,000
FHWA (NHPP)	Federal	CON	\$0	\$265,600	\$0	\$0	\$265,600
MoDOT	State	CON	\$0	\$66,400	\$0	\$0	\$66,400
<b>Totals</b>			<b>\$0</b>	<b>\$352,000</b>	<b>\$0</b>	<b>\$0</b>	<b>\$352,000</b>

### Notes

Source of state funds: state transportation revenues.

<b>Prior Cost</b>	\$0
<b>Future Cost</b>	\$0
<b>Total Cost</b>	\$352,000



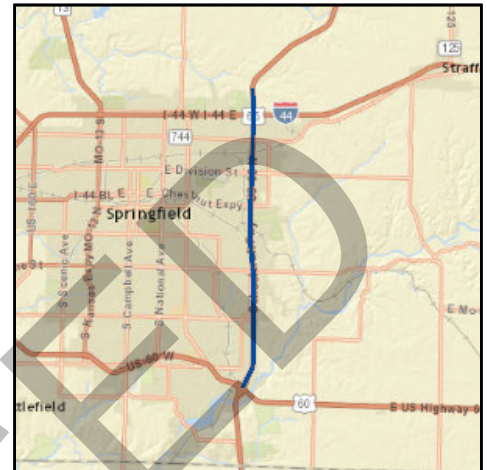
# Transportation Improvement Program - FY 2015-2018

Project Detail by Section and Project Number with Map

## E) Roadways Section

**TIP #** SP1602      **ROUTE 65 PAVEMENT IMPROVEMENTS IN SPRINGFIELD**

**Route** US 65  
**From** Valley Water Mill Road  
**To** Route 60  
**Location/Agency** City of Springfield  
**Federal Agency** FHWA  
**Responsible Agency** MoDOT  
**Federal Funding Category** NHPP(NHS)  
**MoDOT Funding Category** Taking Care of the System  
**AC Year of Conv.**  
**STIP #** 8P3048



### Project Description

Route 65 pavement improvements from 0.1 mile north of Valley Water Mill Road to Rte. 60 (James River Freeway).

Fund Code	Source	Phase	FY2015	FY2016	FY2017	FY2018	Total
FHWA (NHPP)	Federal	ENG	\$0	\$48,000	\$377,600	\$0	\$425,600
MoDOT	State	ENG	\$0	\$12,000	\$94,400	\$0	\$106,400
FHWA (NHPP)	Federal	CON	\$0	\$0	\$6,512,800	\$0	\$6,512,800
MoDOT	State	CON	\$0	\$0	\$1,628,200	\$0	\$1,628,200
<b>Totals</b>			<b>\$0</b>	<b>\$60,000</b>	<b>\$8,613,000</b>	<b>\$0</b>	<b>\$8,673,000</b>

### Notes

Source of State Funds: State transportation revenues.

<b>Prior Cost</b>	\$0
<b>Future Cost</b>	\$0
<b>Total Cost</b>	\$8,673,000

# FINANCIAL SUMMARY

## Bicycle & Pedestrian

### YEARLY SUMMARY

PROJECT	FHWA (STP)	FHWA (STP-U)	FHWA (TE)	FHWA (TAP)	Local LOCAL	State MoDOT	State MoDOT-AC	TOTAL
<b>FY 2015</b>								
EN1302	\$0	\$0	\$0	\$240,000	\$60,000	\$0	\$0	<b>\$300,000</b>
EN1305	\$0	\$0	\$220,413	\$0	\$179,587	\$0	\$0	<b>\$400,000</b>
EN1306	\$0	\$0	\$320,000	\$0	\$80,000	\$0	\$0	<b>\$400,000</b>
EN1307	\$0	\$0	\$200,000	\$0	\$50,000	\$0	\$0	<b>\$250,000</b>
EN1401	\$0	\$48,000	\$0	\$0	\$12,000	\$0	\$0	<b>\$60,000</b>
EN1502	\$0	\$0	\$0	\$0	\$0	\$194,800	\$779,200	<b>\$974,000</b>
EN1503	\$0	\$0	\$0	\$122,966	\$30,742	\$0	\$0	<b>\$153,708</b>
EN1504	\$0	\$0	\$0	\$141,635	\$35,409	\$0	\$0	<b>\$177,044</b>
EN1505	\$0	\$0	\$0	\$40,034	\$10,009	\$0	\$0	<b>\$50,043</b>
EN1506	\$0	\$0	\$0	\$250,000	\$141,176	\$0	\$0	<b>\$391,176</b>
EN1507	\$0	\$0	\$0	\$192,680	\$48,170	\$0	\$0	<b>\$240,850</b>
EN1508	\$0	\$0	\$0	\$250,000	\$179,000	\$0	\$0	<b>\$429,000</b>
EN1509	\$0	\$0	\$0	\$250,000	\$280,000	\$0	\$0	<b>\$530,000</b>
EN1510	\$0	\$0	\$0	\$250,000	\$62,500	\$0	\$0	<b>\$312,500</b>
EN1511	\$0	\$0	\$0	\$160,000	\$40,000	\$0	\$0	<b>\$200,000</b>
EN1512	\$0	\$0	\$0	\$133,080	\$33,270	\$0	\$0	<b>\$166,350</b>
MO1309	\$0	\$0	\$0	\$0	\$0	\$5,000	\$20,000	<b>\$25,000</b>
SP1412	\$0	\$0	\$0	\$0	\$0	\$118,600	\$474,400	<b>\$593,000</b>
SP1414	\$69,000	\$0	\$175,000	\$0	\$30,000	\$31,000	\$0	<b>\$305,000</b>
<b>SUBTOTAL</b>	<b>\$69,000</b>	<b>\$48,000</b>	<b>\$915,413</b>	<b>\$2,030,395</b>	<b>\$1,271,863</b>	<b>\$349,400</b>	<b>\$1,273,600</b>	<b>\$5,957,671</b>
<b>FY 2016</b>								
EN1601	\$0	\$31,200	\$192,000	\$0	\$0	\$55,800	\$0	<b>\$279,000</b>
MO1309	\$0	\$0	\$0	\$0	\$0	\$5,000	\$20,000	<b>\$25,000</b>
<b>SUBTOTAL</b>	<b>\$0</b>	<b>\$31,200</b>	<b>\$192,000</b>	<b>\$0</b>	<b>\$0</b>	<b>\$60,800</b>	<b>\$20,000</b>	<b>\$304,000</b>
<b>FY 2017</b>								
MO1309	\$0	\$0	\$0	\$0	\$0	\$5,000	\$20,000	<b>\$25,000</b>
<b>SUBTOTAL</b>	<b>\$0</b>	<b>\$0</b>	<b>\$0</b>	<b>\$0</b>	<b>\$0</b>	<b>\$5,000</b>	<b>\$20,000</b>	<b>\$25,000</b>
<b>FY 2018</b>								
MO1309	\$0	\$0	\$0	\$0	\$0	\$5,000	\$20,000	<b>\$25,000</b>
<b>SUBTOTAL</b>	<b>\$0</b>	<b>\$0</b>	<b>\$0</b>	<b>\$0</b>	<b>\$0</b>	<b>\$5,000</b>	<b>\$20,000</b>	<b>\$25,000</b>
<b>GRAND TOTAL</b>	<b>\$69,000</b>	<b>\$79,200</b>	<b>\$1,107,413</b>	<b>\$2,030,395</b>	<b>\$1,271,863</b>	<b>\$420,200</b>	<b>\$1,333,600</b>	<b>\$6,311,671</b>

## FINANCIAL CONSTRAINT

### Bicycle & Pedestrian

	STP	STP-U	TE	TAP	Local	MoDOT	MoDOT-AC	TOTAL
<b>PRIOR YEAR</b>								
Balance	\$ -	\$ -	\$ -	\$837,863	\$ -	\$ -	\$ -	\$837,863
<b>FY 2015</b>								
Funds Anticipated	\$69,000	\$48,000	\$915,413	\$1,199,376	\$1,271,863	\$349,400	\$1,273,600	\$5,126,652
Funds Programmed	(\$69,000.00)	(\$48,000.00)	(\$915,413.00)	(\$2,030,395.00)	(\$1,271,863.00)	(\$349,400.00)	(\$1,273,600.00)	(\$5,957,671.00)
<b>Running Balance</b>	<b>\$0</b>	<b>\$0</b>	<b>\$0</b>	<b>\$6,844</b>	<b>\$0</b>	<b>\$0</b>	<b>\$0</b>	<b>\$6,844</b>
<b>FY 2016</b>								
Funds Anticipated	\$ -	\$31,200	\$192,000	\$0	\$ -	\$60,800	\$20,000	\$304,000
Funds Programmed	\$ -	(\$31,200)	(\$192,000.00)	\$ -	\$ -	(\$60,800.00)	(\$20,000.00)	(\$304,000.00)
<b>Running Balance</b>	<b>\$0</b>	<b>\$0</b>	<b>\$0</b>	<b>\$6,844</b>	<b>\$0</b>	<b>\$0</b>	<b>\$0</b>	<b>\$6,844</b>
<b>FY 2017</b>								
Funds Anticipated	\$ -	\$ -	\$ -	\$612,826	\$ -	\$5,000	\$20,000	\$637,826
Funds Programmed	\$ -	\$ -	\$ -	\$ -	\$ -	(\$5,000.00)	(\$20,000.00)	(\$25,000.00)
<b>Running Balance</b>	<b>\$0</b>	<b>\$0</b>	<b>\$0</b>	<b>\$619,670</b>	<b>\$0</b>	<b>\$0</b>	<b>\$0</b>	<b>\$619,670</b>
<b>FY 2018</b>								
Funds Anticipated	\$ -	\$ -	\$ -	\$612,826	\$ -	\$5,000	\$20,000	\$637,826
Funds Programmed	\$ -	\$ -	\$ -	\$ -	\$ -	(\$5,000.00)	(\$20,000.00)	(\$25,000.00)
<b>Running Balance</b>	<b>\$0</b>	<b>\$0</b>	<b>\$0</b>	<b>\$1,232,496</b>	<b>\$0</b>	<b>\$0</b>	<b>\$0</b>	<b>\$1,232,496</b>

# FINANCIAL SUMMARY

## Roadways

### YEARLY SUMMARY

	Federal								Local	State			Other	
PROJECT	FHWA (STP-U)	FHWA (SAFETY)	FHWA (BRIDGE)	FHWA (STP)	FHWA (130)	FHWA (NHPP)	FHWA (HPP)	FHWA (BRO)	LOCAL	MoDOT	MoDOT GCSA	MoDOT-AC	OTHER	TOTAL
<b>FY 2015</b>														
BA1101	\$8,000	\$0	\$0	\$0	\$0	\$0	\$0	\$0	\$2,000	\$0	\$0	\$0	\$0	\$10,000
CC0901	\$0	\$0	\$0	\$0	\$0	\$0	\$0	\$0	\$0	\$400	\$0	\$1,600	\$0	\$2,000
CC1102	\$0	\$0	\$0	\$0	\$0	\$0	\$0	\$0	\$0	\$400	\$0	\$1,600	\$0	\$2,000
CC1110	\$2,072,000	\$0	\$0	\$0	\$0	\$0	\$0	\$0	\$1,557,044	\$97,600	\$0	\$3,893,356	\$0	\$7,620,000
GR1010	\$0	\$911,000	\$0	\$0	\$0	\$0	\$0	\$0	\$0	\$2,369,000	\$0	\$9,071,000	\$0	\$12,351,000
GR1104	\$0	\$0	\$0	\$0	\$160,000	\$0	\$0	\$0	\$0	\$0	\$40,000	\$0	\$0	\$200,000
GR1213	\$0	\$0	\$0	\$0	\$0	\$0	\$0	\$1,133,600	\$283,400	\$0	\$0	\$0	\$0	\$1,417,000
GR1312	\$0	\$0	\$0	\$0	\$0	\$0	\$0	\$371,200	\$92,800	\$0	\$0	\$0	\$0	\$464,000
GR1402	\$0	\$0	\$0	\$168,800	\$1,049,967	\$0	\$0	\$0	\$0	\$105,200	\$1,048,968	\$0	\$126,065	\$2,499,000
GR1403	\$0	\$0	\$0	\$0	\$0	\$0	\$0	\$0	\$0	\$400	\$0	\$1,600	\$0	\$2,000
GR1408	\$0	\$0	\$0	\$0	\$0	\$0	\$0	\$0	\$0	\$400	\$0	\$1,600	\$0	\$2,000
GR1501	\$1,200,000	\$0	\$0	\$0	\$0	\$0	\$0	\$0	\$300,000	\$0	\$0	\$0	\$0	\$1,500,000
GR1502	\$960,000	\$0	\$0	\$0	\$0	\$0	\$0	\$0	\$240,000	\$0	\$0	\$0	\$0	\$1,200,000
MO1105	\$0	\$0	\$0	\$0	\$0	\$0	\$0	\$0	\$0	\$284,000	\$0	\$0	\$0	\$284,000
MO1201	\$0	\$1,800	\$0	\$0	\$0	\$0	\$0	\$0	\$0	\$200	\$0	\$0	\$0	\$2,000
MO1404	\$0	\$0	\$0	\$0	\$0	\$0	\$0	\$0	\$0	\$400	\$0	\$1,600	\$0	\$2,000
MO1405	\$0	\$0	\$0	\$0	\$0	\$0	\$0	\$0	\$0	\$25,000	\$0	\$0	\$0	\$25,000
MO1408	\$0	\$0	\$0	\$0	\$0	\$0	\$0	\$0	\$0	\$196,000	\$0	\$784,000	\$0	\$980,000
MO1409	\$0	\$0	\$0	\$0	\$0	\$0	\$0	\$0	\$0	\$330,800	\$0	\$1,323,200	\$0	\$1,654,000
MO1501	\$0	\$32,000	\$0	\$0	\$0	\$0	\$0	\$0	\$0	\$0	\$0	\$0	\$0	\$32,000
MO1503	\$276,000	\$0	\$0	\$0	\$0	\$0	\$0	\$0	\$69,000	\$134,600	\$0	\$538,400	\$0	\$1,018,000
MO1504	\$0	\$0	\$0	\$0	\$0	\$0	\$0	\$0	\$0	\$21,600	\$0	\$194,400	\$0	\$216,000
MO1505	\$0	\$0	\$0	\$0	\$0	\$0	\$0	\$0	\$0	\$1,000	\$0	\$0	\$0	\$1,000
MO1601	\$0	\$0	\$0	\$0	\$0	\$0	\$0	\$0	\$0	\$2,000	\$0	\$0	\$0	\$2,000
MO1604	\$0	\$55,800	\$0	\$0	\$0	\$0	\$0	\$0	\$0	\$6,200	\$0	\$0	\$0	\$62,000
MO1605	\$0	\$0	\$0	\$0	\$0	\$0	\$0	\$0	\$0	\$400	\$0	\$1,600	\$0	\$2,000
MO1705	\$0	\$0	\$0	\$0	\$0	\$0	\$0	\$0	\$0	\$400	\$0	\$1,600	\$0	\$2,000
NX0601	\$949,612	\$0	\$0	\$0	\$0	\$0	\$0	\$0	\$1,188,388	\$0	\$0	\$0	\$0	\$2,138,000
NX0906	\$0	\$0	\$0	\$0	\$0	\$0	\$0	\$0	\$0	\$10,800	\$0	\$43,200	\$0	\$54,000
OK1401	\$0	\$0	\$0	\$0	\$0	\$0	\$0	\$0	\$0	\$400	\$0	\$1,600	\$0	\$2,000
RG0901	\$0	\$0	\$0	\$0	\$0	\$0	\$0	\$0	\$0	\$400	\$0	\$1,600	\$0	\$2,000
RG1201	\$0	\$0	\$0	\$0	\$0	\$0	\$0	\$0	\$0	\$400	\$0	\$1,600	\$0	\$2,000
RP1401	\$0	\$0	\$0	\$0	\$0	\$0	\$0	\$0	\$0	\$400	\$0	\$1,600	\$0	\$2,000
RP1501	\$40,000	\$0	\$0	\$0	\$0	\$0	\$0	\$0	\$10,000	\$0	\$0	\$0	\$0	\$50,000
SP1018	\$0	\$0	\$248,000	\$0	\$0	\$0	\$0	\$0	\$0	\$62,000	\$0	\$0	\$0	\$310,000
SP1106	\$0	\$0	\$0	\$0	\$0	\$0	\$0	\$0	\$0	\$400	\$0	\$1,600	\$0	\$2,000
SP1109	\$1,506,000	\$0	\$0	\$0	\$2,250,000	\$0	\$0	\$0	\$0	\$1,398,400	\$750,000	\$3,877,600	\$343,000	\$10,125,000
SP1112	\$0	\$0	\$0	\$0	\$0	\$0	\$0	\$0	\$0	\$400	\$0	\$1,600	\$0	\$2,000
SP1114	\$0	\$0	\$0	\$0	\$160,000	\$0	\$0	\$0	\$0	\$0	\$40,000	\$0	\$0	\$200,000
SP1120	\$0	\$0	\$0	\$0	\$4,000	\$0	\$0	\$0	\$0	\$0	\$1,000	\$0	\$0	\$5,000
SP1204	\$0	\$0	\$0	\$0	\$0	\$0	\$0	\$0	\$0	\$400	\$0	\$1,600	\$0	\$2,000
SP1209	\$0	\$0	\$0	\$499,915	\$0	\$0	\$0	\$0	\$124,979	\$0	\$0	\$0	\$0	\$624,894
SP1315	\$0	\$0	\$0	\$0	\$0	\$0	\$0	\$0	\$0	\$88,200	\$0	\$352,800	\$0	\$441,000

FY 2015 continued on next page

# FINANCIAL SUMMARY

## Roadways

### YEARLY SUMMARY

	Federal								Local	State			Other	
PROJECT	FHWA (STP-U)	FHWA (SAFETY)	FHWA (BRIDGE)	FHWA (STP)	FHWA (130)	FHWA (NHPP)	FHWA (HPP)	FHWA (BRO)	LOCAL	MoDOT	MoDOT GCSA	MoDOT-AC	OTHER	TOTAL
<b>FY 2015 continued</b>														
SP1316	\$0	\$0	\$0	\$0	\$0	\$0	\$0	\$0	\$0	\$391,800	\$0	\$1,567,200	\$0	\$1,959,000
SP1318	\$0	\$0	\$0	\$0	\$0	\$0	\$0	\$0	\$0	\$233,000	\$0	\$932,000	\$0	\$1,165,000
SP1321	\$10,000	\$0	\$0	\$0	\$0	\$0	\$0	\$0	\$3,984	\$0	\$0	\$0	\$0	\$13,984
SP1323	\$47,000	\$0	\$0	\$0	\$0	\$0	\$0	\$0	\$10,000	\$31,800	\$0	\$127,200	\$0	\$216,000
SP1401	\$0	\$0	\$0	\$0	\$0	\$0	\$0	\$0	\$0	\$1,000	\$0	\$4,000	\$0	\$5,000
SP1403	\$0	\$0	\$0	\$480,800	\$0	\$0	\$0	\$0	\$0	\$120,400	\$0	\$800	\$0	\$602,000
SP1405	\$0	\$0	\$0	\$0	\$0	\$0	\$0	\$0	\$0	\$400	\$0	\$1,600	\$0	\$2,000
SP1408	\$0	\$0	\$0	\$0	\$0	\$0	\$0	\$0	\$0	\$255,400	\$0	\$1,021,600	\$0	\$1,277,000
SP1409	\$0	\$0	\$0	\$0	\$0	\$0	\$0	\$0	\$0	\$7,300	\$0	\$65,700	\$0	\$73,000
SP1410	\$0	\$0	\$0	\$0	\$0	\$0	\$0	\$0	\$0	\$40,000	\$0	\$160,000	\$0	\$200,000
SP1411	\$0	\$0	\$0	\$0	\$0	\$0	\$0	\$0	\$0	\$109,600	\$0	\$438,400	\$0	\$548,000
SP1415	\$0	\$0	\$0	\$0	\$0	\$0	\$0	\$0	\$0	\$21,800	\$0	\$87,200	\$0	\$109,000
SP1416	\$0	\$0	\$0	\$0	\$0	\$0	\$0	\$0	\$0	\$400	\$0	\$1,600	\$0	\$2,000
SP1501	\$0	\$0	\$0	\$0	\$0	\$0	\$0	\$0	\$0	\$75,200	\$0	\$300,800	\$0	\$376,000
WI1301	\$0	\$0	\$0	\$0	\$0	\$0	\$0	\$0	\$0	\$1,000	\$0	\$4,000	\$0	\$5,000
WI1501	\$40,000	\$0	\$0	\$0	\$0	\$0	\$0	\$0	\$10,000	\$0	\$0	\$0	\$0	\$50,000
<b>SUBTOTAL</b>	<b>\$7,108,612</b>	<b>\$1,000,600</b>	<b>\$248,000</b>	<b>\$1,149,515</b>	<b>\$3,623,967</b>	<b>\$0</b>	<b>\$0</b>	<b>\$1,504,800</b>	<b>\$3,891,595</b>	<b>\$6,427,300</b>	<b>\$1,879,968</b>	<b>\$24,812,456</b>	<b>\$469,065</b>	<b>\$52,115,878</b>

<b>FY 2016</b>														
CC0901	\$0	\$0	\$0	\$0	\$0	\$0	\$0	\$0	\$0	\$400	\$0	\$1,600	\$0	\$2,000
CC1102	\$0	\$0	\$0	\$0	\$0	\$0	\$0	\$0	\$0	\$400	\$0	\$1,600	\$0	\$2,000
GR1104	\$0	\$0	\$0	\$0	\$128,000	\$0	\$0	\$0	\$0	\$0	\$32,000	\$0	\$0	\$160,000
GR1403	\$0	\$0	\$0	\$0	\$0	\$0	\$0	\$0	\$0	\$400	\$0	\$1,600	\$0	\$2,000
GR1408	\$0	\$0	\$150,400	\$0	\$0	\$0	\$0	\$0	\$0	\$302,800	\$0	\$1,060,800	\$0	\$1,514,000
GR1501	\$1,200,000	\$0	\$0	\$0	\$0	\$0	\$0	\$0	\$300,000	\$0	\$0	\$0	\$0	\$1,500,000
GR1601	\$0	\$0	\$0	\$0	\$0	\$0	\$0	\$320,000	\$80,000	\$0	\$0	\$0	\$0	\$400,000
GR1602	\$0	\$0	\$0	\$0	\$0	\$4,500	\$0	\$0	\$0	\$500	\$0	\$0	\$0	\$5,000
MO1105	\$0	\$0	\$0	\$0	\$0	\$0	\$0	\$0	\$0	\$284,000	\$0	\$0	\$0	\$284,000
MO1201	\$0	\$65,800	\$0	\$0	\$0	\$0	\$0	\$0	\$0	\$8,200	\$0	\$0	\$0	\$74,000
MO1404	\$0	\$0	\$0	\$0	\$0	\$12,800	\$0	\$0	\$0	\$3,200	\$0	\$0	\$0	\$16,000
MO1505	\$0	\$0	\$0	\$800	\$0	\$0	\$0	\$0	\$0	\$200	\$0	\$0	\$0	\$1,000
MO1601	\$0	\$46,900	\$0	\$0	\$0	\$0	\$0	\$0	\$0	\$4,100	\$0	\$0	\$0	\$51,000
MO1603	\$300,000	\$0	\$0	\$0	\$0	\$0	\$0	\$0	\$75,000	\$134,600	\$0	\$538,400	\$0	\$1,048,000
MO1604	\$0	\$711,000	\$0	\$0	\$0	\$0	\$0	\$0	\$0	\$79,000	\$0	\$0	\$0	\$790,000
MO1605	\$0	\$0	\$0	\$0	\$0	\$0	\$0	\$0	\$0	\$37,800	\$0	\$151,200	\$0	\$189,000
MO1606	\$0	\$0	\$0	\$0	\$0	\$194,400	\$0	\$0	\$0	\$21,600	\$0	\$0	\$0	\$216,000
MO1607	\$0	\$0	\$0	\$0	\$0	\$8,000	\$0	\$0	\$0	\$2,000	\$0	\$0	\$0	\$10,000
MO1608	\$0	\$900	\$0	\$0	\$0	\$0	\$0	\$0	\$0	\$100	\$0	\$0	\$0	\$1,000
MO1609	\$0	\$0	\$0	\$0	\$0	\$0	\$0	\$0	\$0	\$2,000	\$0	\$8,000	\$0	\$10,000
MO1610	\$0	\$0	\$0	\$0	\$0	\$0	\$0	\$0	\$0	\$2,000	\$0	\$8,000	\$0	\$10,000
MO1611	\$0	\$0	\$0	\$0	\$0	\$0	\$0	\$0	\$0	\$2,000	\$0	\$8,000	\$0	\$10,000
MO1705	\$0	\$0	\$0	\$1,600	\$0	\$0	\$0	\$0	\$0	\$400	\$0	\$0	\$0	\$2,000
NX0906	\$1,307,001	\$0	\$0	\$0	\$0	\$0	\$0	\$0	\$326,750	\$344,200	\$0	\$1,376,800	\$0	\$3,354,751

FY 2016 continued on next page

# FINANCIAL SUMMARY

## Roadways

### YEARLY SUMMARY

	Federal								Local	State			Other	
PROJECT	FHWA (STP-U)	FHWA (SAFETY)	FHWA (BRIDGE)	FHWA (STP)	FHWA (130)	FHWA (NHPP)	FHWA (HPP)	FHWA (BRO)	LOCAL	MoDOT	MoDOT GCSA	MoDOT-AC	OTHER	TOTAL
<b>FY 2016 continued</b>														
OK1401	\$0	\$0	\$0	\$0	\$0	\$0	\$0	\$0	\$0	\$400	\$0	\$1,600	\$0	<b>\$2,000</b>
RG0901	\$0	\$0	\$0	\$0	\$0	\$0	\$0	\$0	\$0	\$400	\$0	\$1,600	\$0	<b>\$2,000</b>
RG1201	\$0	\$0	\$0	\$0	\$0	\$800	\$0	\$0	\$0	\$200	\$0	\$0	\$0	<b>\$1,000</b>
RP1401	\$0	\$0	\$0	\$0	\$0	\$178,400	\$0	\$0	\$0	\$44,600	\$0	\$0	\$0	<b>\$223,000</b>
SP1018	\$0	\$0	\$4,726,400	\$0	\$0	\$0	\$0	\$0	\$0	\$1,181,600	\$0	\$0	\$0	<b>\$5,908,000</b>
SP1106	\$0	\$0	\$0	\$3,200	\$0	\$0	\$0	\$0	\$0	\$1,000	\$0	\$1,600	\$0	<b>\$5,800</b>
SP1112	\$0	\$0	\$0	\$0	\$0	\$64,000	\$0	\$0	\$0	\$16,000	\$0	\$0	\$0	<b>\$80,000</b>
SP1204	\$0	\$0	\$0	\$0	\$0	\$1,600	\$0	\$0	\$0	\$400	\$0	\$0	\$0	<b>\$2,000</b>
SP1321	\$10,000	\$0	\$0	\$0	\$0	\$0	\$0	\$0	\$3,984	\$0	\$0	\$0	\$0	<b>\$13,984</b>
SP1323	\$681,000	\$0	\$0	\$0	\$0	\$147,200	\$0	\$0	\$905,541	\$112,915	\$0	\$484,440	\$0	<b>\$2,331,096</b>
SP1401	\$0	\$0	\$0	\$0	\$0	\$20,800	\$0	\$0	\$0	\$5,200	\$0	\$0	\$0	<b>\$26,000</b>
SP1405	\$0	\$0	\$0	\$0	\$0	\$0	\$0	\$0	\$0	\$400	\$0	\$1,600	\$0	<b>\$2,000</b>
SP1409	\$0	\$258,000	\$0	\$0	\$0	\$7,257,000	\$0	\$0	\$0	\$835,000	\$0	\$0	\$0	<b>\$8,350,000</b>
SP1410	\$0	\$0	\$0	\$0	\$0	\$0	\$0	\$0	\$0	\$2,903,200	\$0	\$11,612,800	\$0	<b>\$14,516,000</b>
SP1415	\$734,000	\$0	\$0	\$0	\$0	\$302,000	\$0	\$0	\$184,000	\$75,000	\$0	\$0	\$0	<b>\$1,295,000</b>
SP1601	\$0	\$0	\$0	\$0	\$0	\$281,600	\$0	\$0	\$0	\$70,400	\$0	\$0	\$0	<b>\$352,000</b>
SP1602	\$0	\$0	\$0	\$0	\$0	\$48,000	\$0	\$0	\$0	\$12,000	\$0	\$0	\$0	<b>\$60,000</b>
WI1301	\$0	\$0	\$0	\$40,000	\$0	\$0	\$0	\$0	\$0	\$10,000	\$0	\$0	\$0	<b>\$50,000</b>
<b>SUBTOTAL</b>	<b>\$4,232,001</b>	<b>\$1,082,600</b>	<b>\$4,876,800</b>	<b>\$45,600</b>	<b>\$128,000</b>	<b>\$8,521,100</b>	<b>\$0</b>	<b>\$320,000</b>	<b>\$1,875,275</b>	<b>\$6,498,615</b>	<b>\$32,000</b>	<b>\$15,259,640</b>	<b>\$0</b>	<b>\$42,871,631</b>

# FINANCIAL SUMMARY

## Roadways

### YEARLY SUMMARY

	Federal								Local	State			Other	
PROJECT	FHWA (STP-U)	FHWA (SAFETY)	FHWA (BRIDGE)	FHWA (STP)	FHWA (130)	FHWA (NHPP)	FHWA (HPP)	FHWA (BRO)	LOCAL	MoDOT	MoDOT GCSA	MoDOT-AC	OTHER	TOTAL
<b>FY 2017</b>														
CC0901	\$0	\$0	\$0	\$0	\$0	\$0	\$0	\$0	\$0	\$400	\$0	\$1,600	\$0	<b>\$2,000</b>
CC1102	\$0	\$0	\$0	\$0	\$0	\$0	\$0	\$0	\$0	\$400	\$0	\$1,600	\$0	<b>\$2,000</b>
GR1403	\$0	\$0	\$0	\$0	\$0	\$0	\$0	\$0	\$0	\$400	\$0	\$1,600	\$0	<b>\$2,000</b>
GR1602	\$0	\$0	\$0	\$0	\$0	\$513,000	\$0	\$0	\$0	\$57,000	\$0	\$0	\$0	<b>\$570,000</b>
MO1105	\$0	\$0	\$0	\$0	\$0	\$0	\$0	\$0	\$0	\$284,000	\$0	\$0	\$0	<b>\$284,000</b>
MO1404	\$0	\$0	\$0	\$0	\$0	\$207,200	\$0	\$0	\$0	\$51,800	\$0	\$0	\$0	<b>\$259,000</b>
MO1505	\$0	\$0	\$0	\$800	\$0	\$0	\$0	\$0	\$0	\$200	\$0	\$0	\$0	<b>\$1,000</b>
MO1607	\$0	\$0	\$0	\$0	\$0	\$8,000	\$0	\$0	\$0	\$2,000	\$0	\$0	\$0	<b>\$10,000</b>
MO1608	\$0	\$39,600	\$0	\$0	\$0	\$0	\$0	\$0	\$0	\$4,400	\$0	\$0	\$0	<b>\$44,000</b>
MO1609	\$0	\$0	\$0	\$0	\$0	\$0	\$0	\$0	\$0	\$2,000	\$0	\$8,000	\$0	<b>\$10,000</b>
MO1610	\$0	\$0	\$0	\$0	\$0	\$0	\$0	\$0	\$0	\$2,000	\$0	\$8,000	\$0	<b>\$10,000</b>
MO1611	\$0	\$0	\$0	\$0	\$0	\$0	\$0	\$0	\$0	\$2,000	\$0	\$8,000	\$0	<b>\$10,000</b>
MO1701	\$315,000	\$0	\$0	\$0	\$0	\$0	\$0	\$0	\$78,750	\$134,600	\$0	\$538,400	\$0	<b>\$1,066,750</b>
MO1705	\$0	\$0	\$0	\$155,200	\$0	\$0	\$0	\$0	\$0	\$38,800	\$0	\$0	\$0	<b>\$194,000</b>
OK1401	\$0	\$0	\$0	\$0	\$0	\$0	\$0	\$0	\$0	\$400	\$0	\$1,600	\$0	<b>\$2,000</b>
RG0901	\$0	\$0	\$0	\$0	\$0	\$0	\$0	\$0	\$0	\$400	\$0	\$1,600	\$0	<b>\$2,000</b>
RG1201	\$0	\$0	\$0	\$0	\$0	\$800	\$0	\$0	\$0	\$200	\$0	\$0	\$0	<b>\$1,000</b>
SP1106	\$0	\$0	\$0	\$1,600	\$0	\$0	\$0	\$0	\$0	\$400	\$0	\$0	\$0	<b>\$2,000</b>
SP1112	\$0	\$0	\$0	\$0	\$0	\$144,000	\$0	\$0	\$0	\$36,000	\$0	\$0	\$0	<b>\$180,000</b>
SP1204	\$0	\$0	\$0	\$0	\$0	\$32,800	\$0	\$0	\$0	\$8,200	\$0	\$0	\$0	<b>\$41,000</b>
SP1401	\$0	\$0	\$0	\$0	\$0	\$405,200	\$0	\$0	\$0	\$100,800	\$0	\$0	\$0	<b>\$506,000</b>
SP1405	\$0	\$0	\$0	\$0	\$0	\$0	\$0	\$0	\$0	\$400	\$0	\$1,600	\$0	<b>\$2,000</b>
SP1415	\$1,089,292	\$0	\$0	\$0	\$0	\$1,373,908	\$0	\$0	\$271,823	\$343,977	\$0	\$0	\$0	<b>\$3,079,000</b>
SP1602	\$0	\$0	\$0	\$0	\$0	\$6,890,400	\$0	\$0	\$0	\$1,722,600	\$0	\$0	\$0	<b>\$8,613,000</b>
WI1301	\$0	\$0	\$0	\$643,200	\$0	\$0	\$0	\$0	\$0	\$160,800	\$0	\$0	\$0	<b>\$804,000</b>
<b>SUBTOTAL</b>	<b>\$1,404,292</b>	<b>\$39,600</b>	<b>\$0</b>	<b>\$800,800</b>	<b>\$0</b>	<b>\$9,575,308</b>	<b>\$0</b>	<b>\$0</b>	<b>\$350,573</b>	<b>\$2,954,177</b>	<b>\$0</b>	<b>\$572,000</b>	<b>\$0</b>	<b>\$15,696,750</b>

# FINANCIAL SUMMARY

## Roadways

### YEARLY SUMMARY

	Federal								Local	State			Other	
PROJECT	FHWA (STP-U)	FHWA (SAFETY)	FHWA (BRIDGE)	FHWA (STP)	FHWA (130)	FHWA (NHPP)	FHWA (HPP)	FHWA (BRO)	LOCAL	MoDOT	MoDOT GCSA	MoDOT-AC	OTHER	TOTAL
<b>FY 2018</b>														
CC0901	\$0	\$0	\$0	\$0	\$0	\$0	\$0	\$0	\$0	\$400	\$0	\$1,600	\$0	<b>\$2,000</b>
CC1102	\$0	\$0	\$0	\$0	\$0	\$0	\$0	\$0	\$0	\$400	\$0	\$1,600	\$0	<b>\$2,000</b>
GR1403	\$0	\$0	\$0	\$0	\$0	\$0	\$0	\$0	\$0	\$400	\$0	\$1,600	\$0	<b>\$2,000</b>
MO1105	\$0	\$0	\$0	\$0	\$0	\$0	\$0	\$0	\$0	\$284,000	\$0	\$0	\$0	<b>\$284,000</b>
MO1505	\$0	\$0	\$0	\$159,200	\$0	\$0	\$0	\$0	\$0	\$39,800	\$0	\$0	\$0	<b>\$199,000</b>
MO1607	\$0	\$0	\$0	\$0	\$0	\$24,800	\$0	\$0	\$0	\$6,200	\$0	\$0	\$0	<b>\$31,000</b>
MO1609	\$0	\$0	\$0	\$0	\$0	\$0	\$0	\$0	\$0	\$2,000	\$0	\$8,000	\$0	<b>\$10,000</b>
MO1610	\$0	\$0	\$0	\$0	\$0	\$0	\$0	\$0	\$0	\$2,000	\$0	\$8,000	\$0	<b>\$10,000</b>
MO1611	\$0	\$0	\$0	\$0	\$0	\$0	\$0	\$0	\$0	\$2,000	\$0	\$8,000	\$0	<b>\$10,000</b>
MO1801	\$331,000	\$0	\$0	\$0	\$0	\$0	\$0	\$0	\$82,750	\$134,600	\$0	\$538,400	\$0	<b>\$1,086,750</b>
OK1401	\$0	\$0	\$0	\$0	\$0	\$0	\$0	\$0	\$0	\$400	\$0	\$1,600	\$0	<b>\$2,000</b>
RG0901	\$0	\$0	\$0	\$0	\$0	\$0	\$0	\$0	\$0	\$400	\$0	\$1,600	\$0	<b>\$2,000</b>
RG1201	\$0	\$0	\$0	\$0	\$0	\$800	\$0	\$0	\$0	\$200	\$0	\$0	\$0	<b>\$1,000</b>
SP1106	\$0	\$0	\$0	\$1,289,600	\$0	\$0	\$0	\$0	\$1,179,000	\$297,400	\$0	\$0	\$0	<b>\$2,766,000</b>
SP1112	\$0	\$0	\$0	\$0	\$0	\$2,801,066	\$166,134	\$0	\$0	\$741,800	\$0	\$0	\$0	<b>\$3,709,000</b>
SP1204	\$0	\$0	\$0	\$0	\$0	\$717,400	\$0	\$0	\$0	\$179,400	\$0	\$0	\$0	<b>\$896,800</b>
SP1405	\$0	\$0	\$0	\$0	\$0	\$0	\$0	\$0	\$0	\$400	\$0	\$1,600	\$0	<b>\$2,000</b>
SUBTOTAL	\$331,000	\$0	\$0	\$1,448,800	\$0	\$3,544,066	\$166,134	\$0	\$1,261,750	\$1,691,800	\$0	\$572,000	\$0	<b>\$9,015,550</b>
GRAND TOTAL	\$13,075,905	\$2,122,800	\$5,124,800	\$3,444,715	\$3,751,967	\$21,640,474	\$166,134	\$1,824,800	\$7,379,193	\$17,571,892	\$1,911,968	\$41,216,096	\$469,065	<b>\$119,699,809</b>

# FINANCIAL CONSTRAINT

## Roadways

	Federal Funding Source													
	STP-U	Safety	Bridge	STP	130	NHPP	HPP	BRO	TOTAL Federal Funds	Local	MoDOT Programmed Funds	Other	State Operations and Maintenance	TOTAL
2015 Funds Programmed	\$7,108,612	\$1,000,600	\$248,000	\$1,149,515	\$3,623,967	\$0	\$0	\$1,504,800	\$14,635,494	\$3,891,595	\$33,119,724	\$469,065	\$6,525,006	\$58,640,884
2016 Funds Programmed	\$4,232,001	\$1,082,600	\$4,876,800	\$45,600	\$128,000	\$8,521,100	\$0	\$320,000	\$19,206,101	\$1,875,275	\$21,790,255	\$0	\$665,506	\$43,537,137
2017 Funds Programmed	\$1,404,292	\$39,600	\$0	\$800,800	\$0	\$9,575,308	\$0	\$0	\$11,820,000	\$350,573	\$3,526,177	\$0	\$6,788,616	\$22,485,366
2018 Funds Programmed	\$331,000	\$0	\$0	\$1,448,800	\$0	\$3,544,066	\$166,134	\$0	\$5,490,000	\$1,261,750	\$2,263,800	\$0	\$6,924,388	\$15,939,938
<b>Total</b>	<b>\$ 13,075,905</b>	<b>\$ 2,122,800</b>	<b>\$ 5,124,800</b>	<b>\$ 3,444,715</b>	<b>\$ 3,751,967</b>	<b>\$ 21,640,474</b>	<b>\$ 166,134</b>	<b>\$ 1,824,800</b>	<b>\$ 51,151,595</b>	<b>\$ 7,379,193</b>	<b>\$ 60,699,956</b>	<b>\$ 469,065</b>	<b>\$ 20,903,516</b>	<b>\$140,603,325</b>

	Prior Year	FY 2015	FY 2016	FY 2017	FY 2018	TOTAL
Available State and Federal Funding	\$24,201,377	\$27,240,000	\$25,680,000	\$8,750,000	\$8,090,000	\$93,961,377
Available Operations and Maintenance Funding	\$ -	\$6,525,006	\$665,506	\$6,788,616	\$6,924,388	\$20,903,516
Available Suballocated STP-U/Small Urban	\$23,213,240	\$5,410,663	\$5,414,570	\$4,599,063	\$4,599,063	\$43,236,599
Available Suballocated BRM	\$1,542,036	\$338,170	\$338,170	\$338,170	\$338,170	\$2,894,716
<b>TOTAL AVAILABLE FUNDING</b>	<b>\$48,956,653</b>	<b>\$39,513,839</b>	<b>\$32,098,246</b>	<b>\$20,475,849</b>	<b>\$19,951,621</b>	<b>\$160,996,208</b>
Prior Year Funding	\$ -	\$48,956,653	\$34,190,268	\$24,626,652	\$22,967,708	-
Programmed State and Federal Funding	\$ -	(\$54,280,224)	(\$41,661,862)	(\$22,134,793)	(\$14,678,188)	(\$132,755,067)
<b>TOTAL REMAINING</b>	<b>\$48,956,653</b>	<b>\$34,190,268</b>	<b>\$24,626,652</b>	<b>\$22,967,708</b>	<b>\$28,241,141</b>	<b>\$28,241,141</b>

Remaining State and Federal Funding	(\$4,814,269)
Remaining Suballocated STP-Urban/Small Urban	\$30,160,694
Remaining Suballocated BRM	\$2,894,716
<b>TOTAL REMAINING</b>	<b>\$28,241,141</b>