

SEPTEMBER 2025

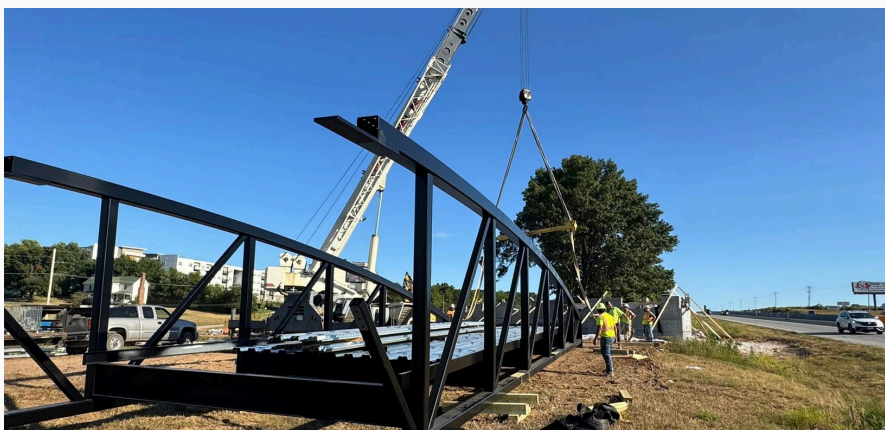
FUNDING OPPORTUNITIES

Ozarks Transportation Organization's Monthly Update

City of Ozark Chadwick Flyer Trail Pedestrian Overpass Pre-fabricated Bridge

Local Project Update

- The pre-fabricated Chadwick Flyer bridge was delivered to the construction site!
- There have been several bid openings and work will begin soon on multiple sidewalk & trail projects throughout the region.
- Construction of sidewalks along Mt. Vernon and Miller Streets in Springfield will continue until late September.



Chadwick Flyer Trail Pedestrian Overpass Bridge Delivery

Upcoming Meetings

All meetings at OTO Offices
2208 W CHESTERFIELD BLVD SUITE 101
SPRINGFIELD, MO

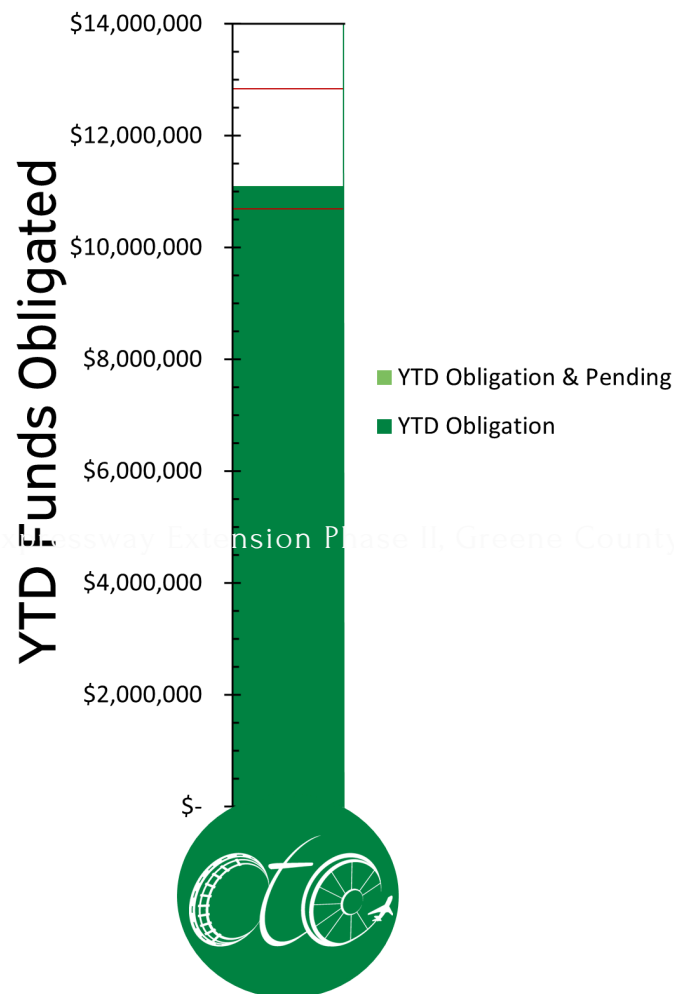
OTO Board of Directors
Meeting
SEPTEMBER 25, 2025
12:00 PM

OTO Executive Committee
Meeting
OCTOBER 8, 2025
12:00 PM

Technical Planning Committee
OCTOBER 15, 2025
1:30 PM



OBLIGATION UPDATE



AS OF SEPTEMBER 15, 2025, OTO HAS OBLIGATED \$11,096,182 OR ABOUT 103.8% OF OTO'S ANNUAL ALLOCATION. IN THE PAST, MODOT HAS LIMITED OTO TO NO MORE THAN THREE YEARS OF ACCUMULATED FUNDING AS A BALANCE. TO LIMIT THE ACCUMULATION OF FUNDS AND TO MAXIMIZE AUGUST REDISTRIBUTION, MODOT HAS NOW ESTABLISHED A STATEWIDE GOAL THAT 120 PERCENT OF ALLOCATED FUNDS ARE OBLIGATED EACH YEAR, WITH 100 PERCENT AS THE MINIMUM AMOUNT TO BE OBLIGATED. AS OTO RECEIVED \$10.7 MILLION FOR FY 2025, THE MINIMUM AMOUNT TO BE OBLIGATED IS \$10.7 MILLION, WITH A GOAL OF \$12.8 MILLION.

THANK YOU TO EVERYONE WHO HAS HELPED MOVE PROJECTS FORWARD.



AMPO Association of Metropolitan Planning Organizations

AMPO HAS WORKED WITH OTHER ORGANIZATIONS INCLUDING NADO, NARC, NLC, AND NACO TO PUT TOGETHER LEGISLATIVE PRIORITIES AT THE NATIONAL LEVEL:

OUR PROPOSAL:



Increase PL Funding: Increase to 3% of total formula allocations and establish a funding floor to support small and rural regions.



Streamline Access: Allow MPOs to receive PL funds directly, with an opt-out for those that prefer the current state-administered model.



Remove Barriers: Reduce fiscal burden by eliminating the local match requirement for PL funds, thereby recognizing that federally mandated planning should not create an unfunded mandate for local governments.



Modernize Eligible Uses: Reflect today's need to plan for the full project lifecycle—including fiscal administration of local projects, preliminary design, economic development studies tied to transportation, local technical assistance, and critical data procurement—maximizing every federal dollar.

By modernizing planning funds, MPOs will be better equipped to support local governments, anticipate challenges, keep projects moving, and meet national goals. Strong planning delivers tangible results: safer roads, quicker commutes, and faster project delivery that benefits every community, from urban centers to rural towns.

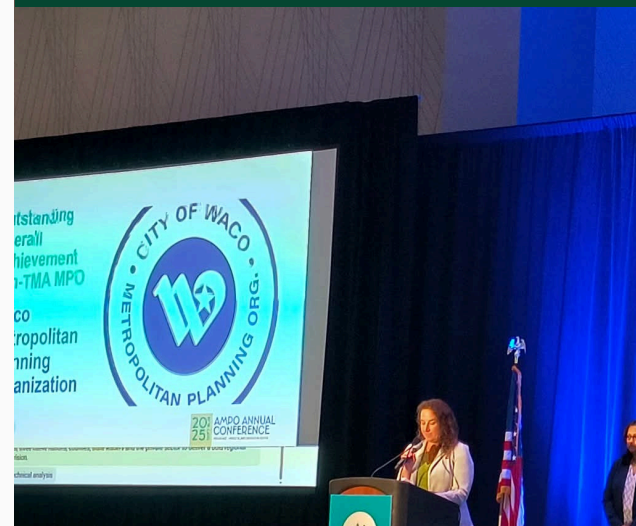
Link to the full AMPO Policy Roadmap III document can be found here: <https://ampo.org/wp-content/uploads/2025/05/AMPO2025-PolicyRoadmap-draft4-1.pdf>

AMPO HELPS SHAPE POLICY THAT BENEFITS ALL MPOS IN ORDER TO CRAFT A METROPOLITAN VISION FOR THE FUTURE.

AMPO HELD ITS ANNUAL CONFERENCE IN PROVIDENCE, RHODE ISLAND IN SEPTEMBER.

SARA FIELDS AND NATASHA LONGPINE WERE BOTH ABLE TO ATTEND. SARA PARTICIPATED IN POLICY COMMITTEE MEETINGS IN HER FINAL TERM AS CHAIR. SHE ALSO PRESENTED ON CONSTITUENT LEVEL PRIORITIZATION, SHARING HOW MISSOURI IS THE BEST IN THE NATION IN ADVANCING LOCALLY PRIORITIZED TRANSPORTATION PROJECTS.

NATASHA ALSO PRESENTED ON MAXIMIZING IN-HOUSE RESOURCES, SHARING WAYS TO GET MORE OUT OF PLANNING FUNDS WHILE PRODUCING QUALITY PRODUCTS.





Federal Lands Access Program (FLAP)

EASTERN FEDERAL LANDS HIGHWAY DIVISION
(EFLHD)

EFLHD will be conducting a Call for Projects for FLAP in Missouri for Federal Fiscal Years FY 2027 through FY 2029. The program goal is to “Improve transportation facilities that provide access to, are adjacent to, or are located within federal lands.”

Projects include:

- Adjacent vehicular parking areas, including interpretive panels
- Acquisition of necessary scenic easements and scenic or historic sites
- Infrastructure and facilities for pedestrians and bicycles
- Environmental mitigation in or adjacent to Federal land to improve public safety
- Improvements to reduce vehicle-caused wildlife mortality while maintaining habitat connectivity
- Construction and reconstruction of roadside rest areas, including sanitary, and water facilities
- Contextual wayfinding markers, landscaping, and mitigation of visual blight

ELIGIBLE APPLICANTS INCLUDE STATE AGENCIES AND LOCAL GOVERNMENTS PROVIDING ACCESS TO FEDERAL LANDS. IN MOST CASES, THE PROJECT SHOULD BE NO FARTHER THAN 10 MILES FROM FEDERAL LANDS. TOTAL FUNDING FOR THE STATE OF MISSOURI IS \$4.4 MILLION, PROJECT SIZE AWARDS WILL VARY AND SCALABLE PROJECT SCOPES SHOULD BE INCLUDED. 100% FEDERAL AWARDS, NO MATCH REQUIREMENT.

APPLICATION DEADLINE:
APPLICATIONS OPEN JULY 1, 2025
AND RUN THROUGH OCTOBER 1,
2025.

[HTTPS://HIGHWAYS.DOT.GOV/FEDERAL-LANDS/PROGRAMS-ACCESS](https://highways.dot.gov/federal-lands/programs-access)





FY26 FHWA Bridge Investment Program

US DOT - FHWA

The Bridge Investment Program is a competitive, discretionary program that focuses on existing bridges to reduce the overall number of bridges in poor condition, or in fair condition at risk of falling into poor condition. It also expands applicant eligibilities to create opportunity for all levels of government to be direct recipients of program funds. Alongside states and federal lands management agencies, metropolitan planning organizations and local and tribal governments can also apply directly to FHWA, making it easier to advance projects at the local level that meet community needs.

The FHWA has opened a Notice of Funding Opportunity (NOFO) for up to \$9.62 billion in FYs 2023 through 2026 Bridge Project grant applications and \$80 million in FYs 2023 through FY 2026 Planning Project grant applications under the Bridge Investment Program. Bridge Project Grants under the Bridge Investment Program are available for bridges with total eligible project costs up to \$100 million.

Minimum grant awards of \$2.5 million

Maximum grant awards of 80 percent of the total eligible project costs (\$100 million cap).

Planning Project grant applications are available for bridges with maximum grant awards of 80 percent of the total eligible project costs.

Application Deadline:

Planning Application Deadlines - October 1, 2025

Bridge Project Application Deadline - November 1, 2025

NOFO can be found here:

<https://www.transportation.gov/rural/grant-toolkit/bridge-investment-program>

Sunshine
Bridge closed
in Springfield
between
Scenic and
Kansas
Expressway.
Completion
scheduled for
December 4th,
2025.



US 65 Bridge, Ozark, MO



Job Openings

SMCOG - Senior Planner <https://www.smcog.org/jobs>

SMCOG - Associate Planner <https://www.smcog.org/jobs>

SMCOG - Entry-Level Planner <https://www.smcog.org/jobs>

SMCOG - Part-Time Administrative Assistant <https://www.smcog.org/jobs>

SMCOG's positions were originally posted in late 2024 but were placed on hold due to uncertainties in funding and program availability under the new Federal Administration. SMCOG is now moving forward to fill two positions - and may consider hiring an entry-level Planner.

City Utilities - GIS Technician Intern
https://cityutilities.wd5.myworkdayjobs.com/en-US/Careers/job/Springfield-MO/GIS-Technician-Intern_R25_29

Christian County - Assistant Highway Administrator
<https://christiancountymo.criterionhcm.com/jobs/395/1/#373>

City of Springfield - Professional Engineer - Public Works - Traffic/Transportation
<https://www.governmentjobs.com/careers/springfieldmo/jobs/5042895/professional-engineer-public-works-traffic-transportation>

City of Strafford - City Administrator
https://www.straffordmo.net/employment_opportunities/index.php

Greene County - Highway Seasonal CDL and Non-CDL Positions
<https://greenecountymo.gov/files/PDF/file.pdf?id=44415>



Kansas Expressway Extension Phase II, Greene County MO Project

You are Invited

OZARKS TRANSPORTATION ORGANIZATION'S ANNUAL LEGISLATIVE BREAKFAST

RSVP by October 3rd

by email

nboyd@ozarkstransportation.org

by phone

417-865-3042 x105

OCTOBER 21, 2025

7:30 AM - 9:00 AM

DRURY UNIVERSITY'S
JUDY THOMPSON EXECUTIVE CENTER
609 E BOB BARKER BOULEVARD, SPRINGFIELD

RSVP by October 3rd



by QR Code

PARTNERSHIP AND COLLABORATION



Training Opportunity

Lunch & Learn



**Sept.
25**



Join us for an enlightening Lunch & Learn session on Performance Measures. Eric Schroeter, MoDOT Deputy Director and Chief Engineer will be presenting!

DATE: September 25, 2025 (noon - 1pm)

LOCATION: 425 W Walnut St.

COST: Members \$20 | Non-members \$30

EMAIL Kim.Swain@us.forvismazars.com