

# TAP Program

- Eligible Categories
  - Regional Trail Planning Services
  - Trail Construction
- Available Funding
  - Planning Services: \$100,000
  - Construction: \$1,584,678

# TAP Award Request

Applicant	Federal Request	Total Cost
Ozark Greenways, Inc	\$100,000	\$127,052
Ozark	\$870,950	\$1,836,252
Springfield	\$217,461	\$271,827
Republic	\$921,622	\$1,417,880
Battlefield	\$286,886	\$358,608
<b>Totals</b>	<b>\$2,396,919</b>	<b>\$3,884,569</b>

# TAP Award Recommendation

Applicant	Federal Award	Total Cost
Ozark Greenways, Inc	\$100,000	\$125,000
Ozark	\$870,950	\$1,836,252
Springfield	\$217,461	\$271,827
Republic*	\$394,214	\$492,768
Battlefield*	\$102,052 + \$184,834 <i>STBG Sub-allocated</i>	\$358,608
<b>Totals</b>	<b>\$1,684,678</b>	<b>\$3,084,455</b>



## Communities connected by trails.

### REGIONAL TRAIL PLANNING SERVICES PROPOSAL

Formed in 1991, our mission is to build a trail system that connects and enhances our community. We are the driving force behind a 140+-mile system of multi-use trails—a dynamic network of connected streams, parks, businesses, and neighborhoods which provides for the enjoyment and economic development of our community. This trail system connects people to our beautiful outdoors, the places they want to go, and creates opportunities for transportation, recreation, conservation, and economic vitality. Our region's trail system will be the best in the state and one of our community's proudest accomplishments.

There are four National Recreation Trails in the current 75+ miles system. In addition to trail initiatives, we are also a Land Trust. We partner with public and private landowners to help conserve and preserve land for conservation, historical, agricultural, and recreational purposes via perpetual easements. We provide those services in Christian, Greene, Stone, and Polk Counties.

The project lead for this contract will be Executive Director, Mary Kromrey. Learn more about the team on the next page.







EXHIBIT A  
PROJECT LOCATION MAP



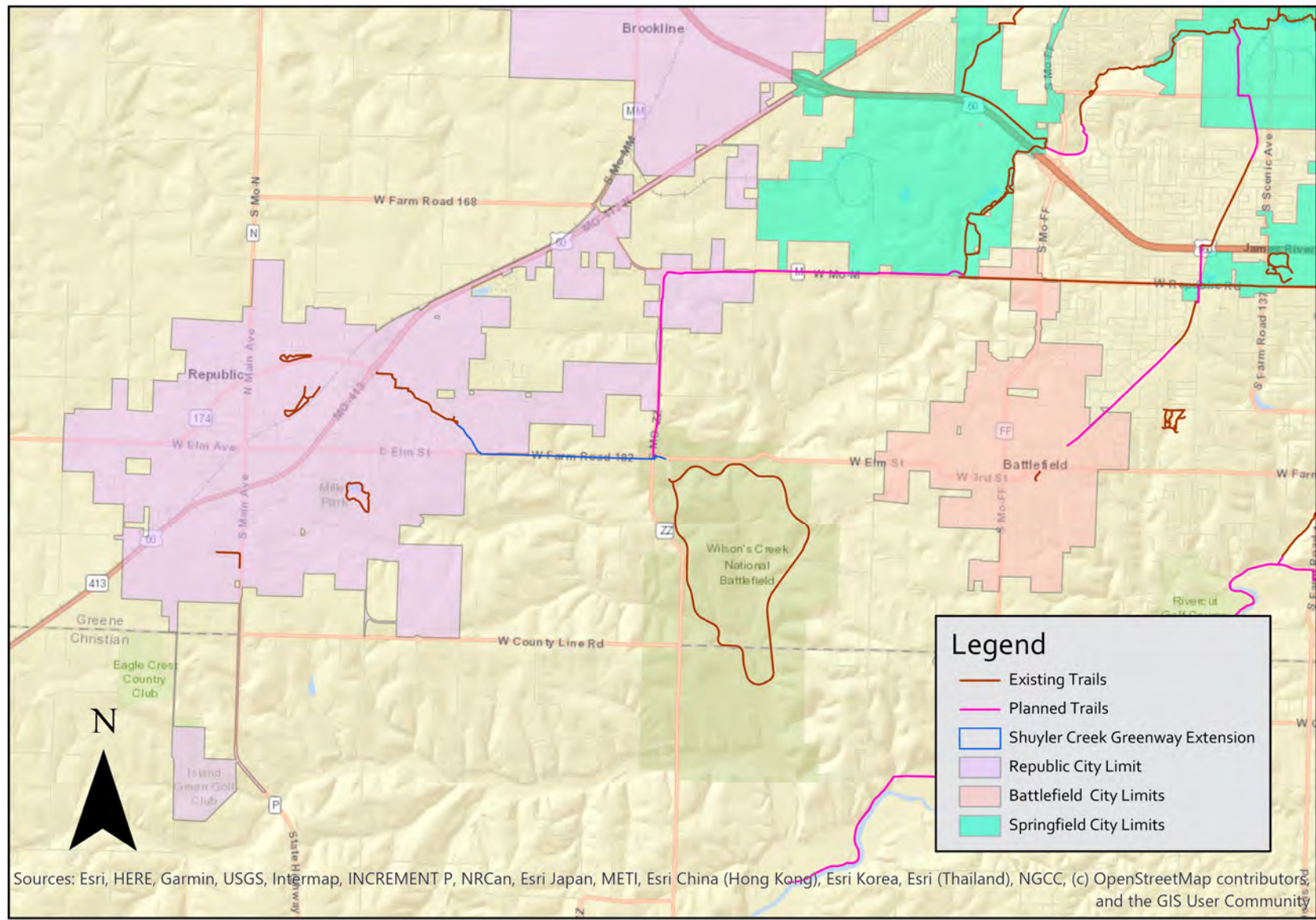
## Exhibit A





## Area Map

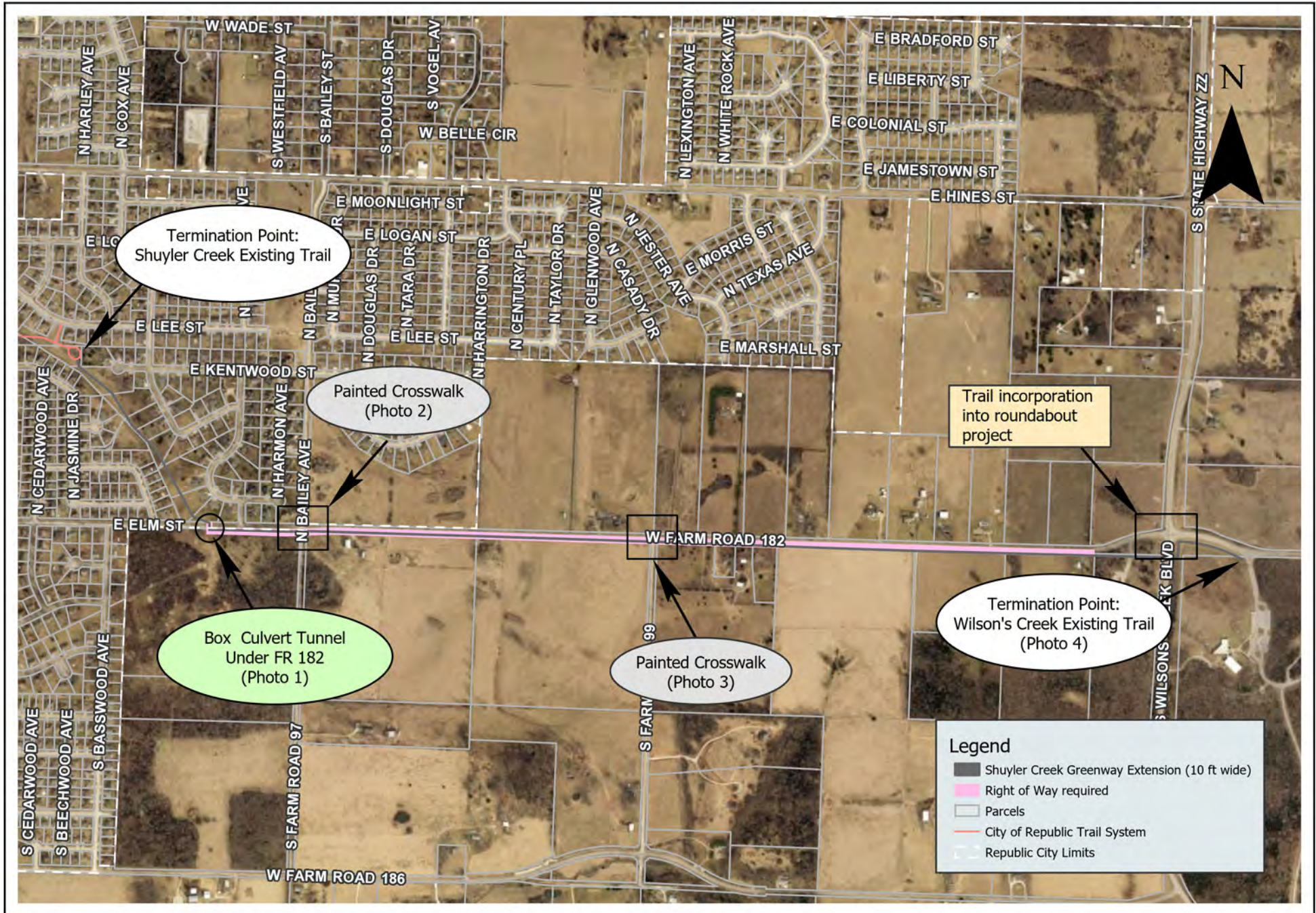
## How the Shuyler Creek Greenway Extension Connects Future and Existing Trails





# Shuyler Creek Greenway Extension

## Full Trail





## Attachment E-1 – Location Sketch





## Attachment E-3 – Plan Sheet

### PROPOSED PROJECT:

THE PROPOSED PROJECT INCLUDES PROVIDING NEW TRAILS TO CONNECT THE CITY OF BATTLEFIELD'S TRAIL OF TEARS PARK TO EXIST. SIDEWALKS, THE FUTURE EXTENSION OF THE TRAIL OF TEARS CORRIDOR, AND THE OLD WIRE ROAD CORRIDOR. WORK MAY INCLUDE ADDITIONAL ADA IMPROVEMENTS AND OTHER WORK TO IMPROVE PEDESTRIAN AND BICYCLE ACCESS.



# TAP Award Recommendation

Applicant	Federal Request	Total Cost
Ozark Greenways, Inc	\$100,000	\$125,000
Ozark	\$870,950	\$1,836,252
Springfield	\$217,461	\$271,827
Republic*	\$394,214	\$492,768
Battlefield*	\$102,052 + \$184,834 <i>STBG Sub-allocated</i>	\$358,608
Totals	\$1,684,678	\$3,084,455