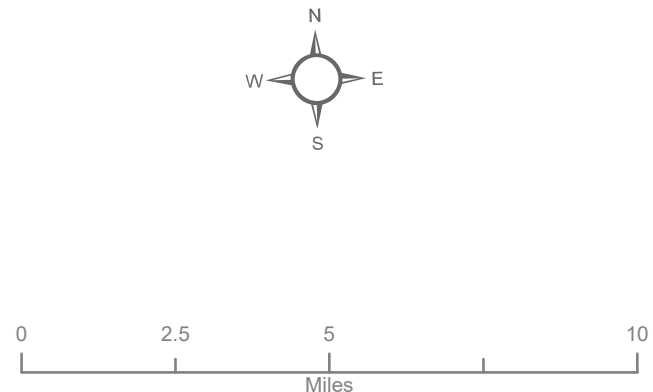
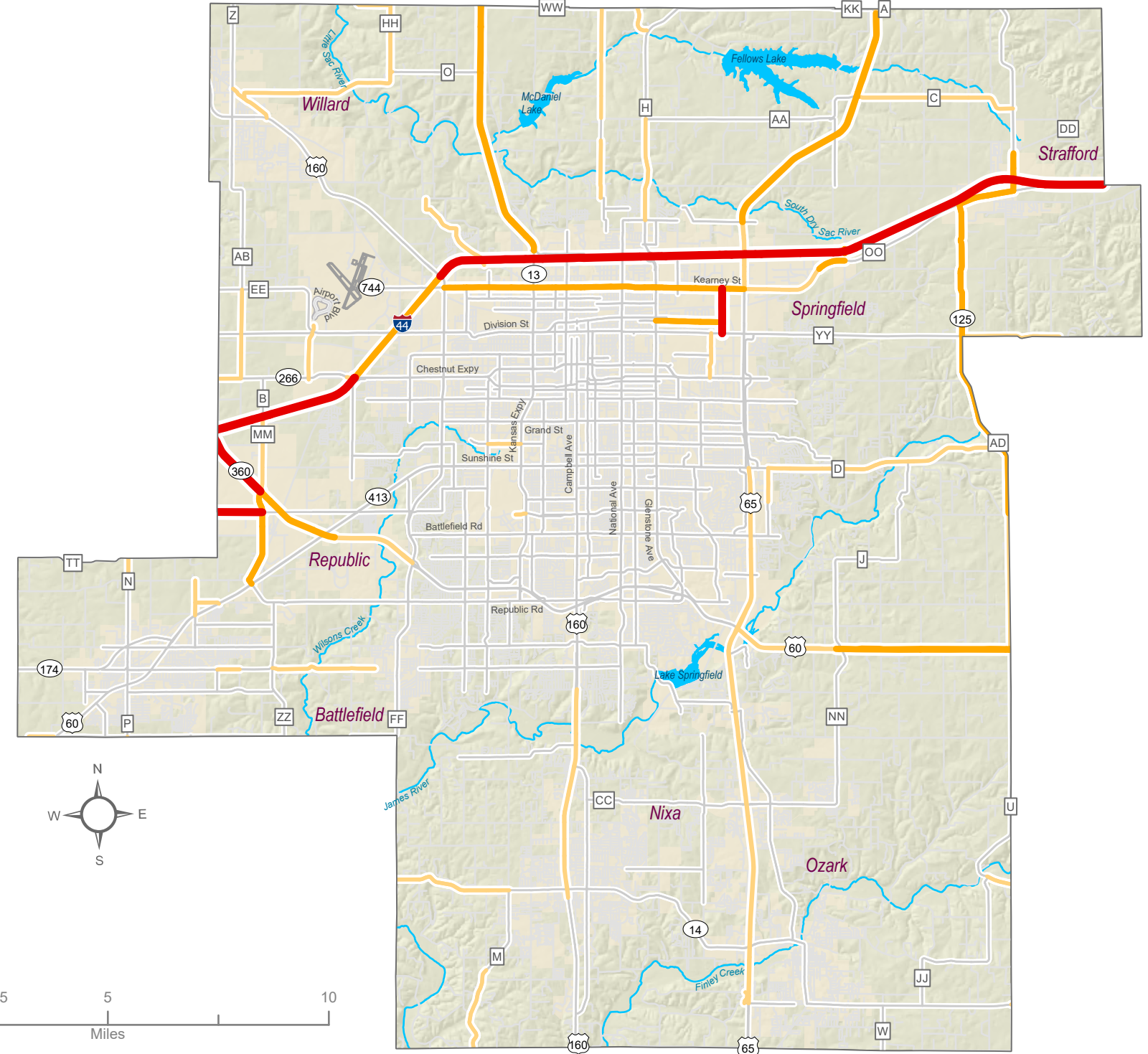
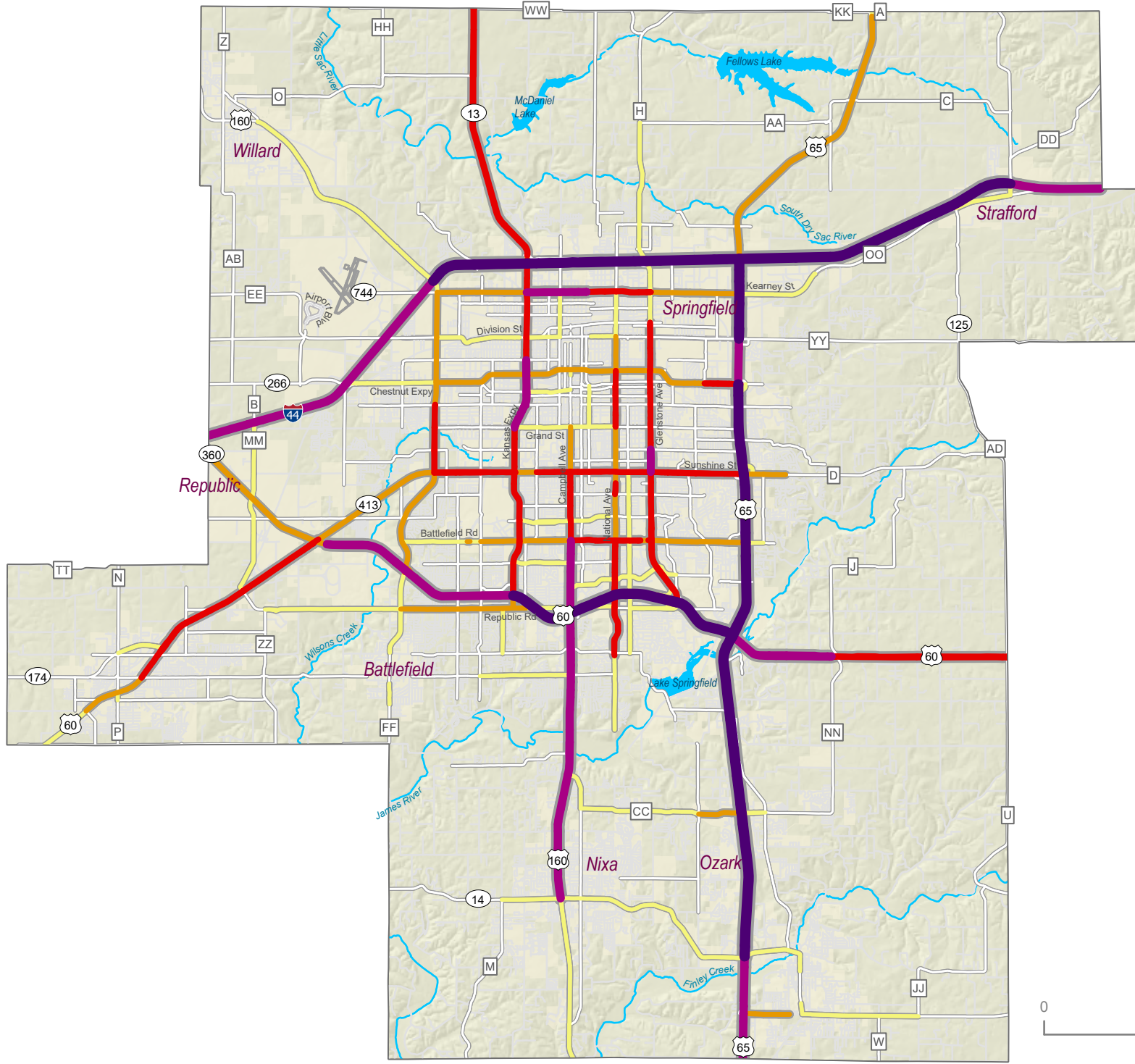


2024 Roadway Passenger Car Equivalent Volume

Percent Freight Traffic



- Passenger Car Equivalent Volumes
- 65,001 - 102,590 (15 points)
 - 40,001 - 65,000 (10 points)
 - 30,001 - 40,000 (6 points)
 - 20,001 - 30,000 (3 points)
 - 10,001 - 20,000 (1 point)
 - 10 - 10,000 (0 points)

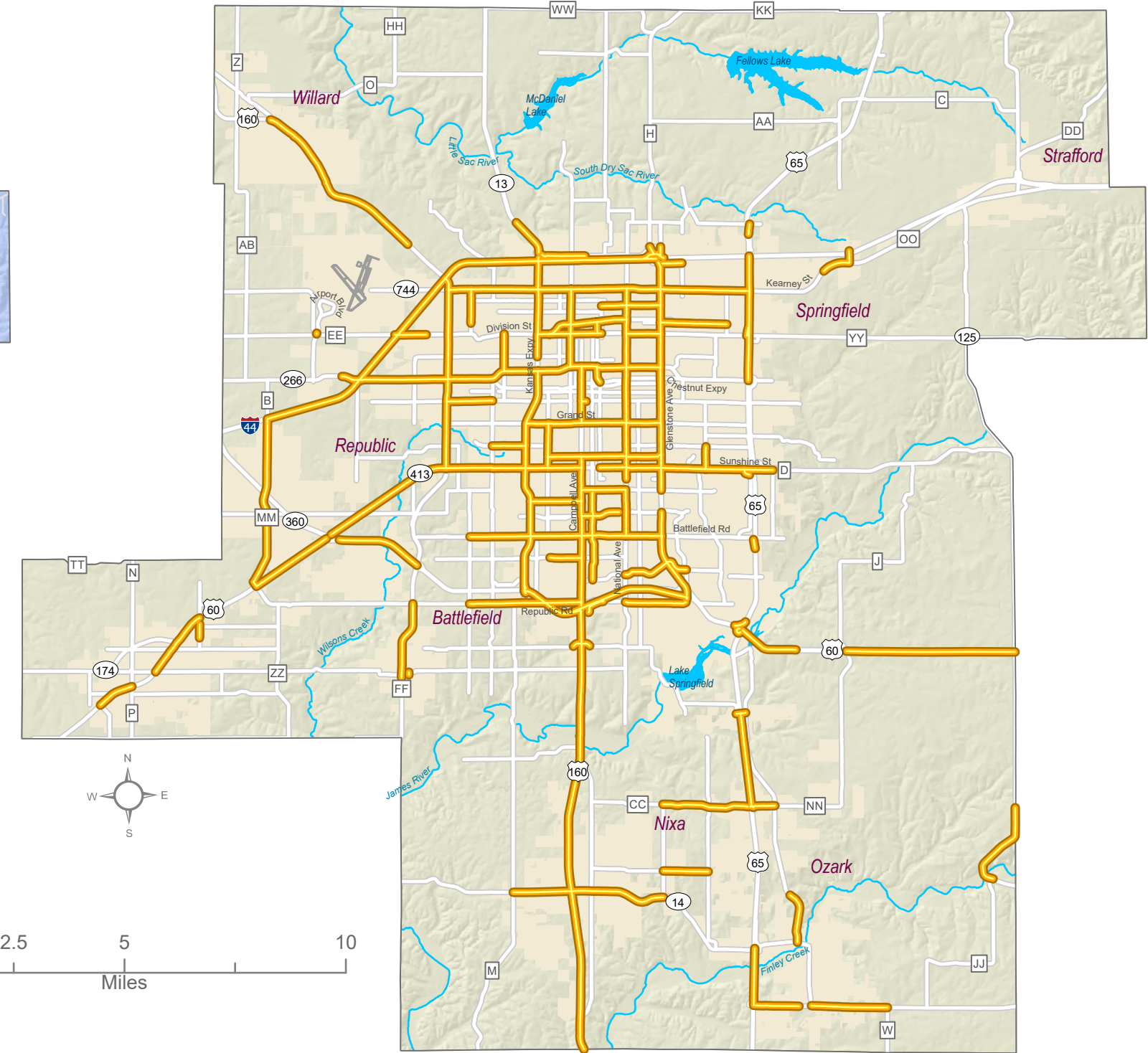
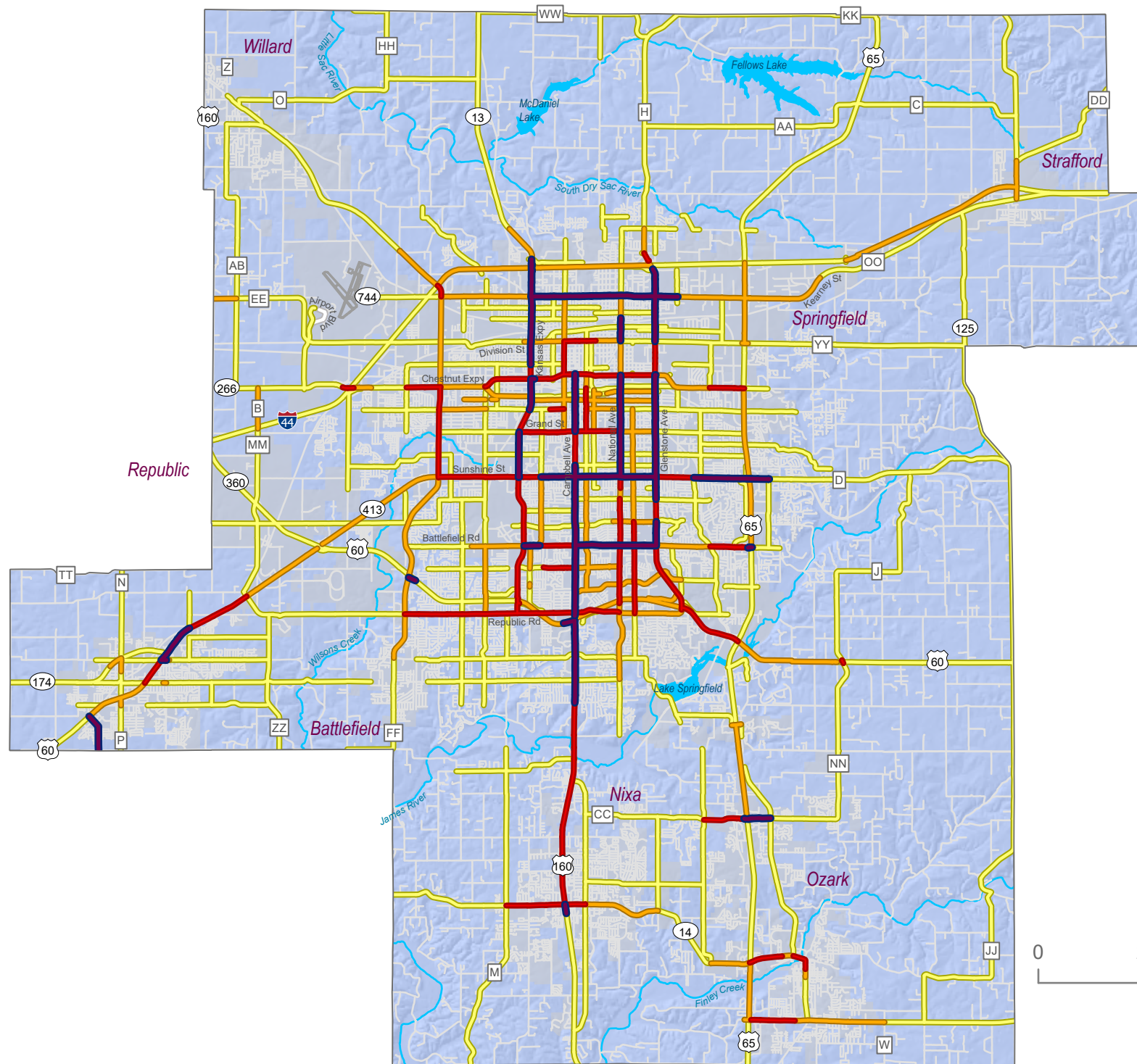


Source: The Missouri Department of Transportation.
2024 AADT by Vehicle Type.
Prepared by the Ozarks Transportation Organization
4/30/2025.

- Percent Roadway Freight Traffic
- 20.01% - 35.18% (3 points)
 - 15.01% - 20% (2 points)
 - 10.01% - 15% (1 point)
 - 0% - 10% (0 points)

Crashes per Mile 2020 - 2024

High Injury Network



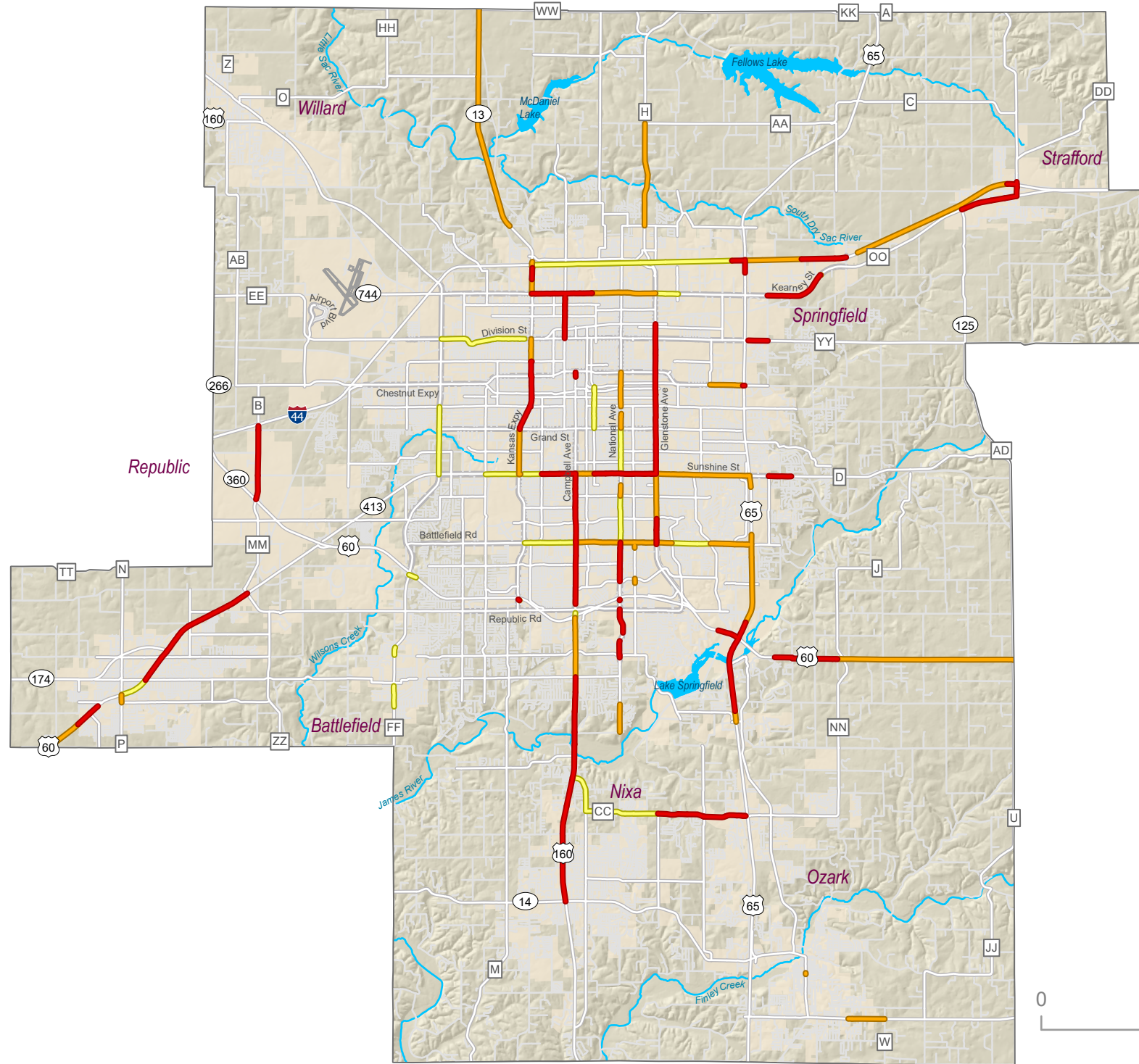
- Crashes per Mile
- 190.7 - 457.5 (15 points)
 - 103.6 - 190.6 (10 points)
 - 44.6 - 103.5 (5 points)
 - 0.7 - 44.5 (0 points)



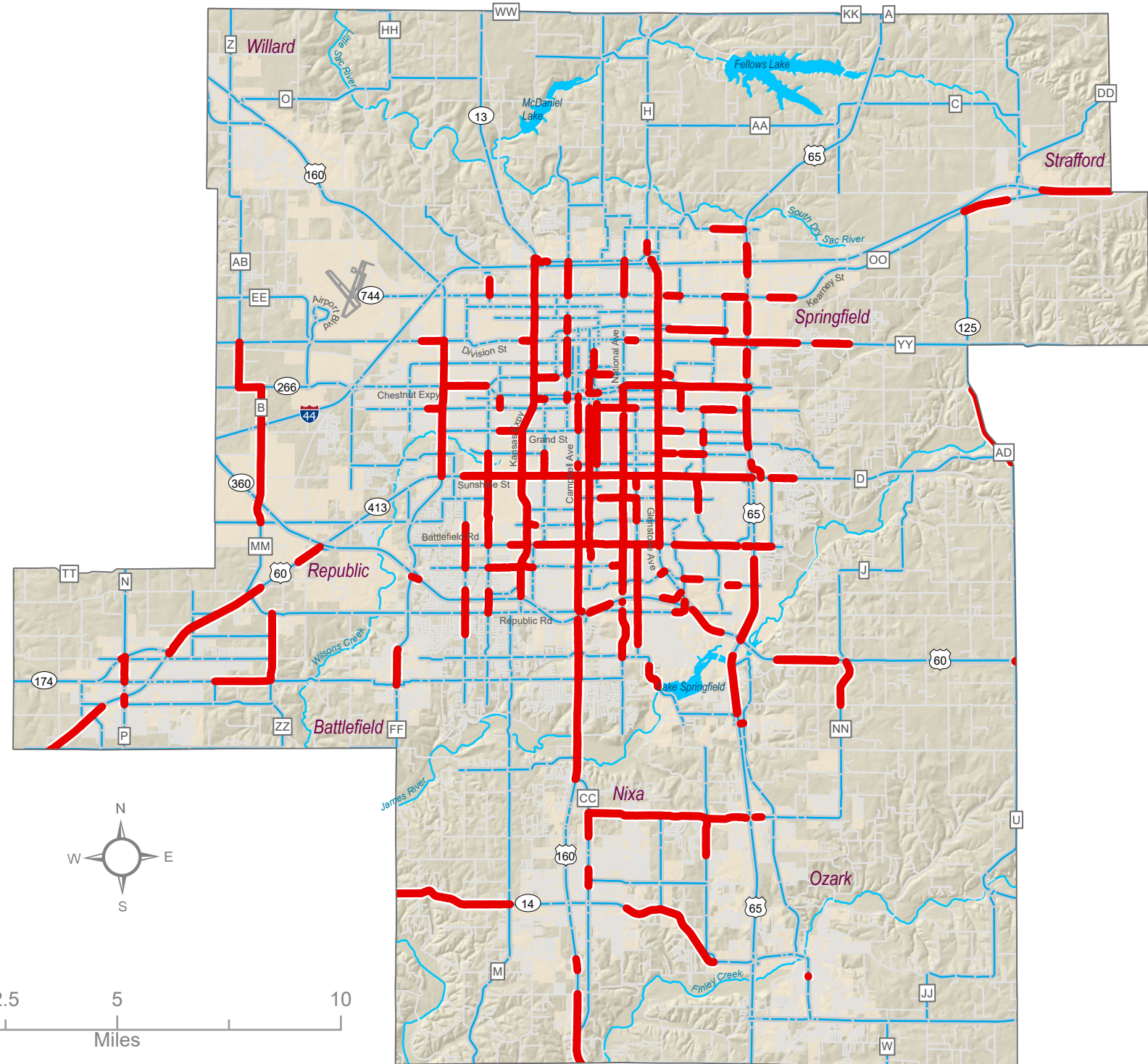
Data Sources: MoDOT Crash Statistics Map. Crashes per mile is based on total crashes from 2020 to 2024. The High Injury Network is based on fatal and serious injury crashes from 2018 - 2022. Segments with 2 or more fatal or serious injury crashes per mile are included in the High Injury Network.

■ High Injury Network (10 points)

Current Volume-to-Capacity Ratio



Future Volume-to-Capacity Ratio



Current Volume-to-Capacity

- > 1.00 (14 points)
- 0.93 - 1.00 (11 points)
- 0.87 - 0.92 (7 points)
- 0.00 - 0.86 (0 points)



Source: The Missouri Department of Transportation and the Ozarks Transportation Organization 2050 Travel Demand Model. Passenger car equivalent volumes were applied by backing out single-unit truck, combo-semi, and bus volumes from the total volume and multiplying the values by three and then re-adding them to the traffic volume totals.

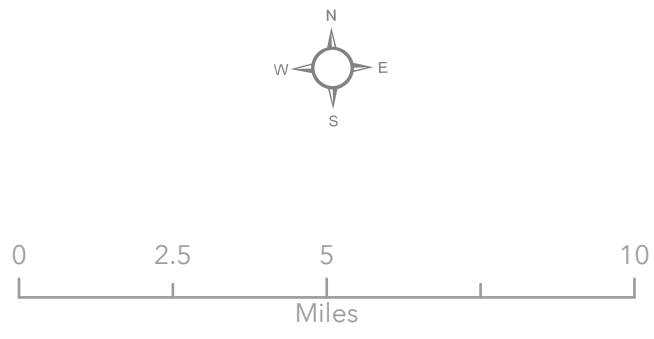
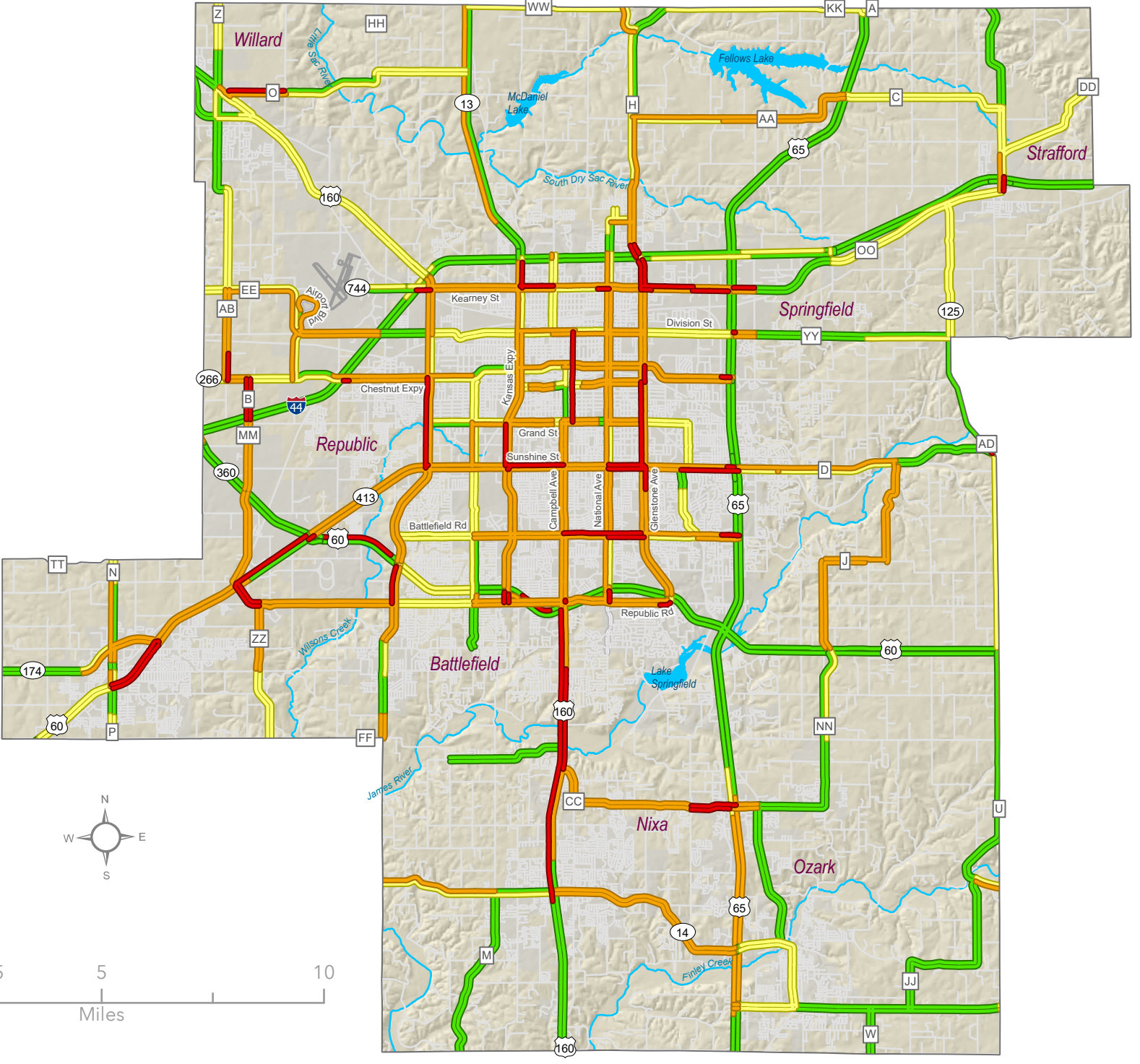
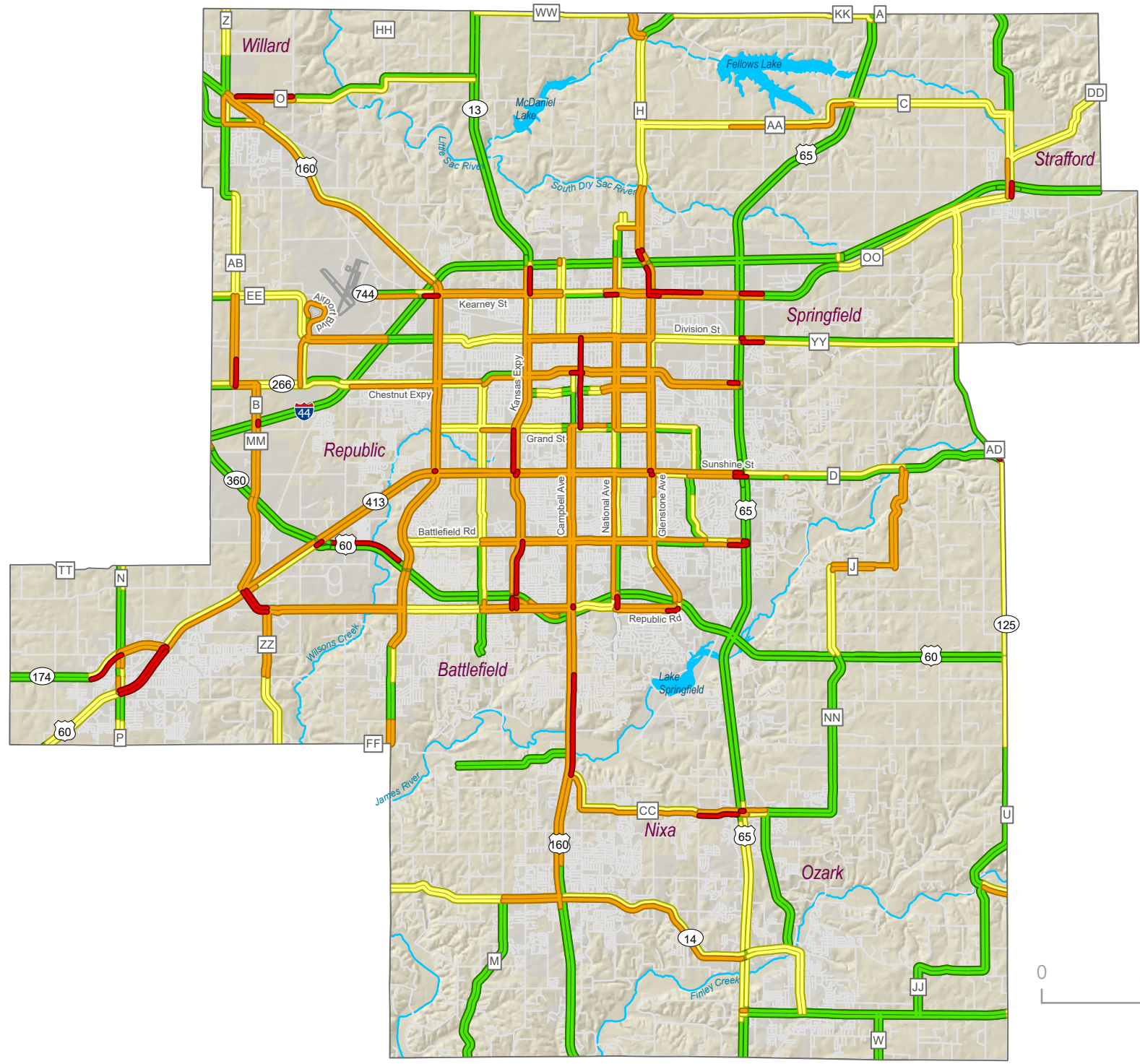
Prepared by the Ozarks Transportation Organization 4/30/2025.

2050 Volume-to-Capacity

- > 0.86 (4 points)
- 0.00 - 0.86 (0 points)

AM Travel Delay 2025

PM Travel Delay 2025

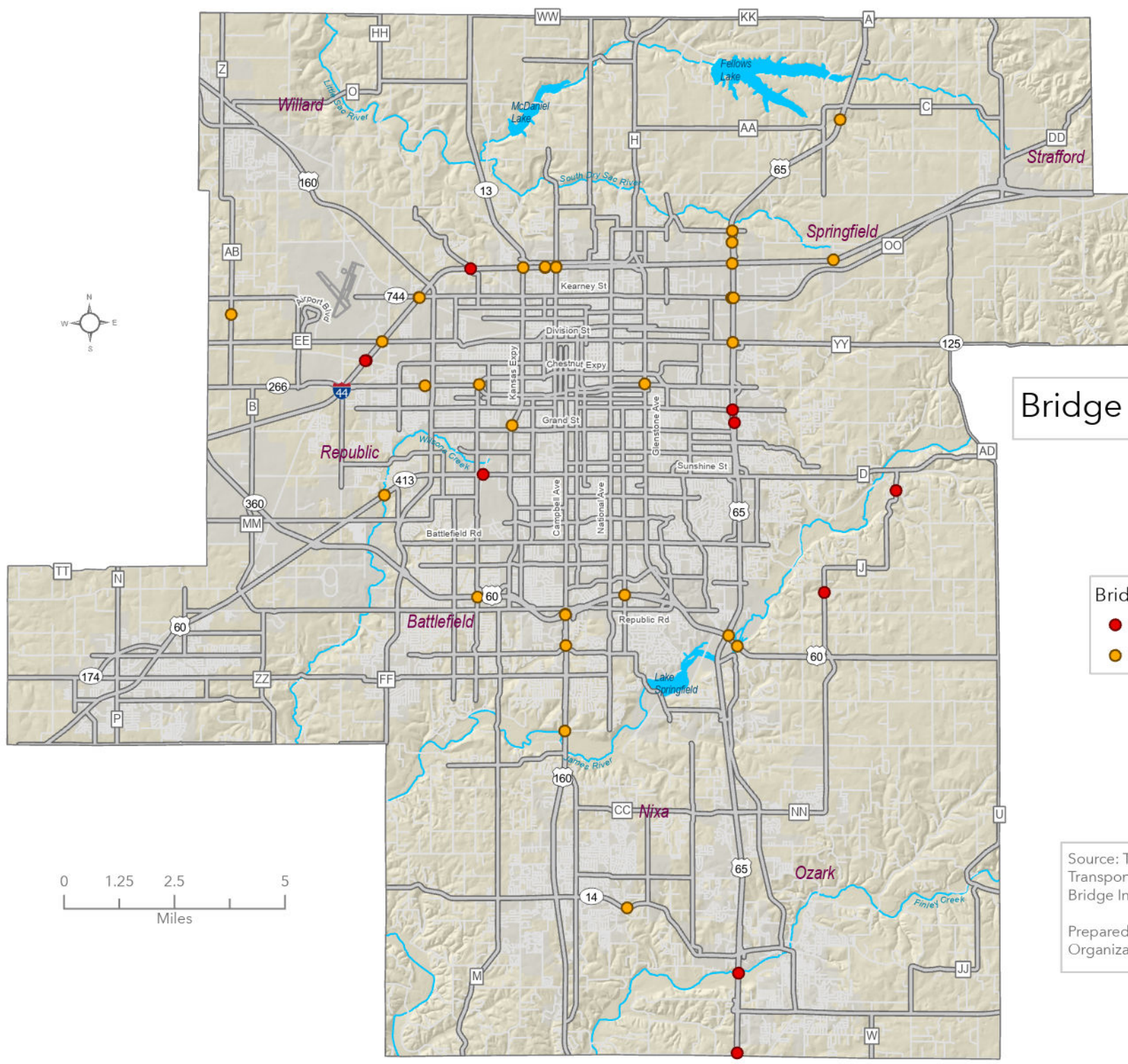


- Arterial & Expressway Scores**
- █ > or = 20 mph below Speed Limit (14 points)
 - █ 10.0 to 19.9 mph below Speed Limit (10 points)
 - █ 5 to 9.9 mph below Speed Limit (4 points)
 - █ < or = 4.9 mph below Speed Limit (0 points)



Source: RITIS HERE speed data for business days during March & April 2025 from 7:15 to 8:15 am & 5:00 to 6:00 pm.

- Freeway Scores**
- █ > or = 10 mph below Speed Limit (14 points)
 - █ 5.0 to 9.9 mph below Speed Limit (10 points)
 - █ 0.1 to 4.9 mph Below Speed Limit (4 points)
 - █ < or = 0 mph below Speed Limit (0 points)



Bridge Condition 2024

- Bridge Condition Rating
- Poor (5 points)
 - Fair (2 points)



Source: The Missouri Department of Transportation SW District National Bridge Inventory Data.

Prepared by the Ozarks Transportation Organization 5/1/2025.